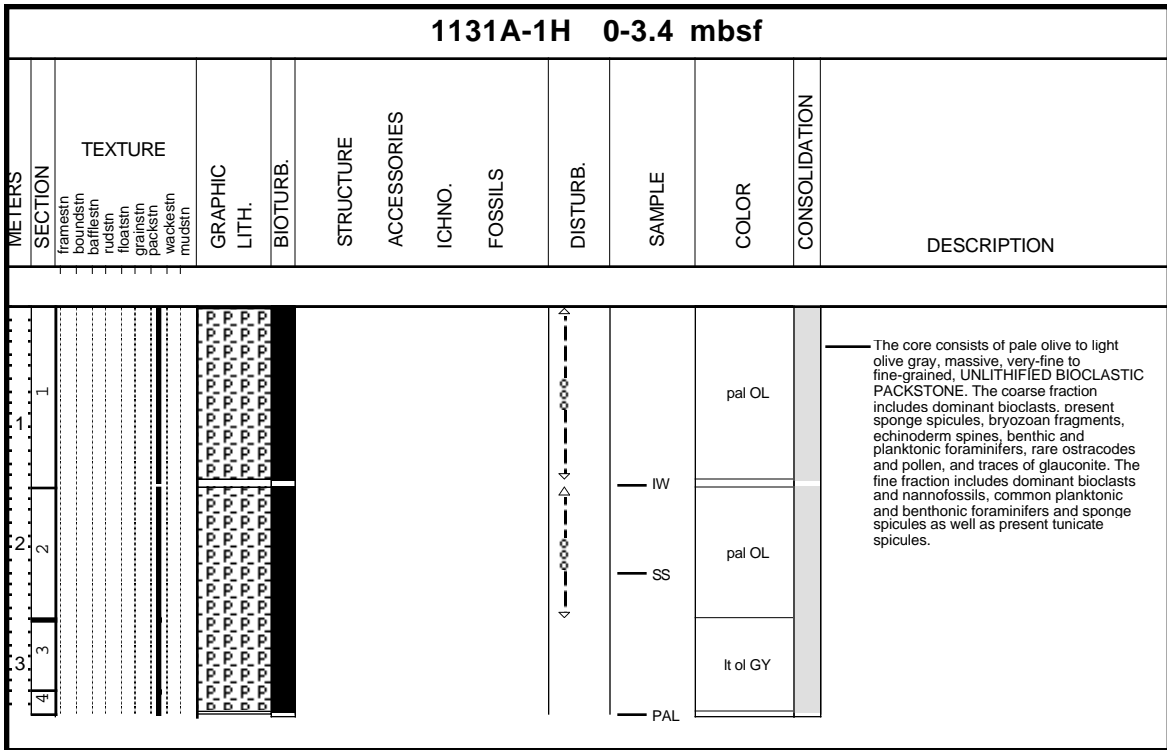
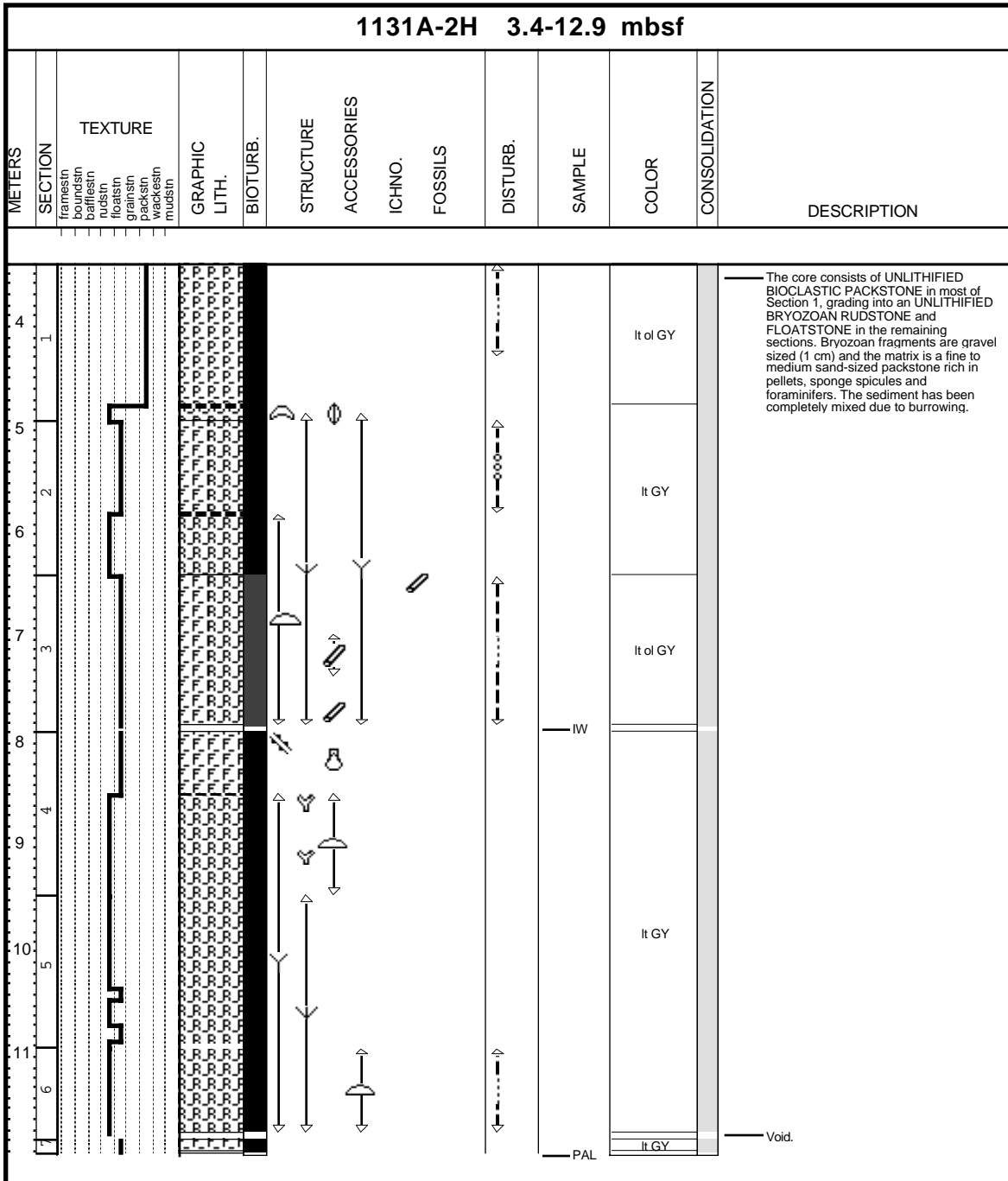


Core Photo

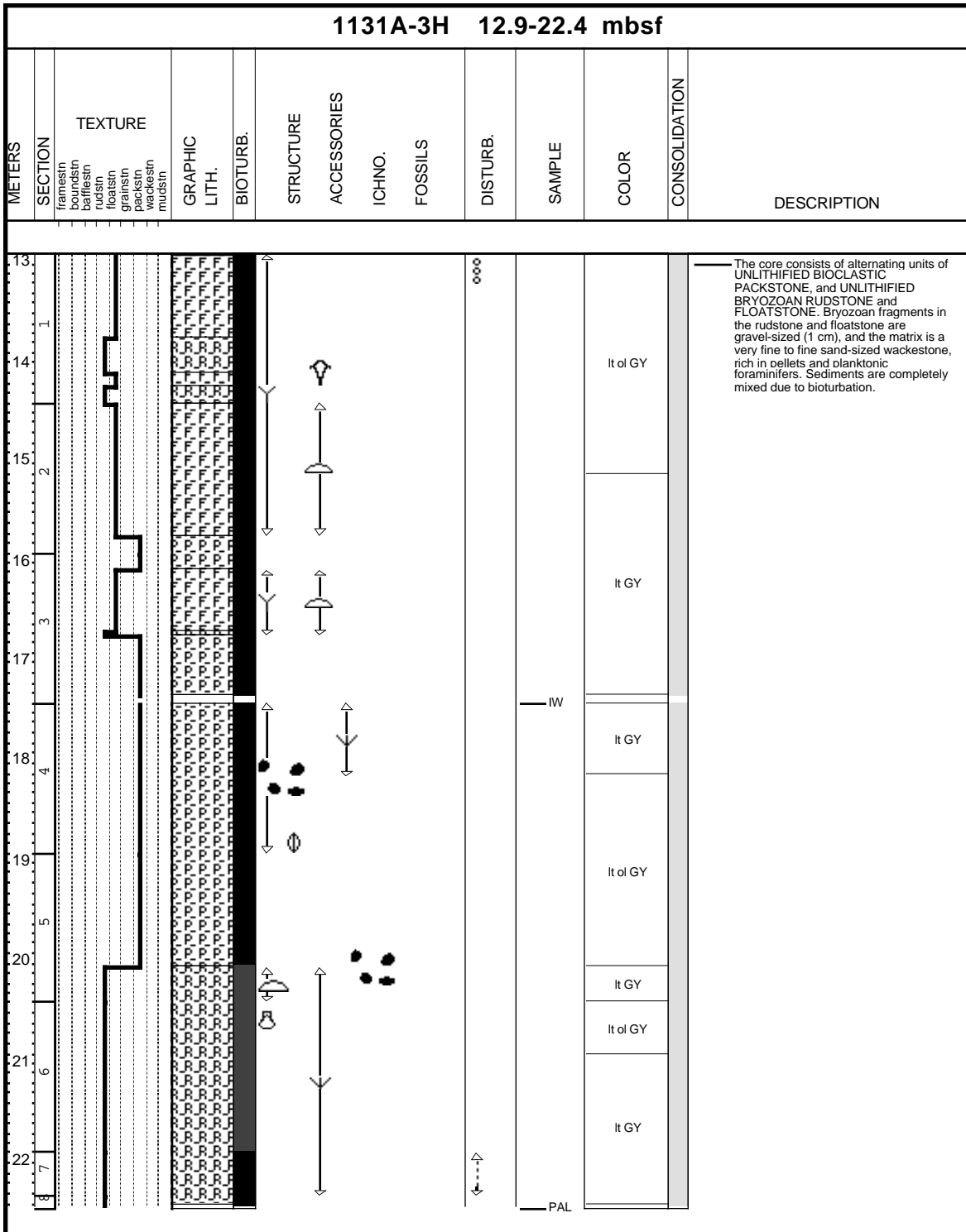


CORE DESCRIPTIONS
VISUAL CORE DESCRIPTIONS, SITE 1131

Core Photo

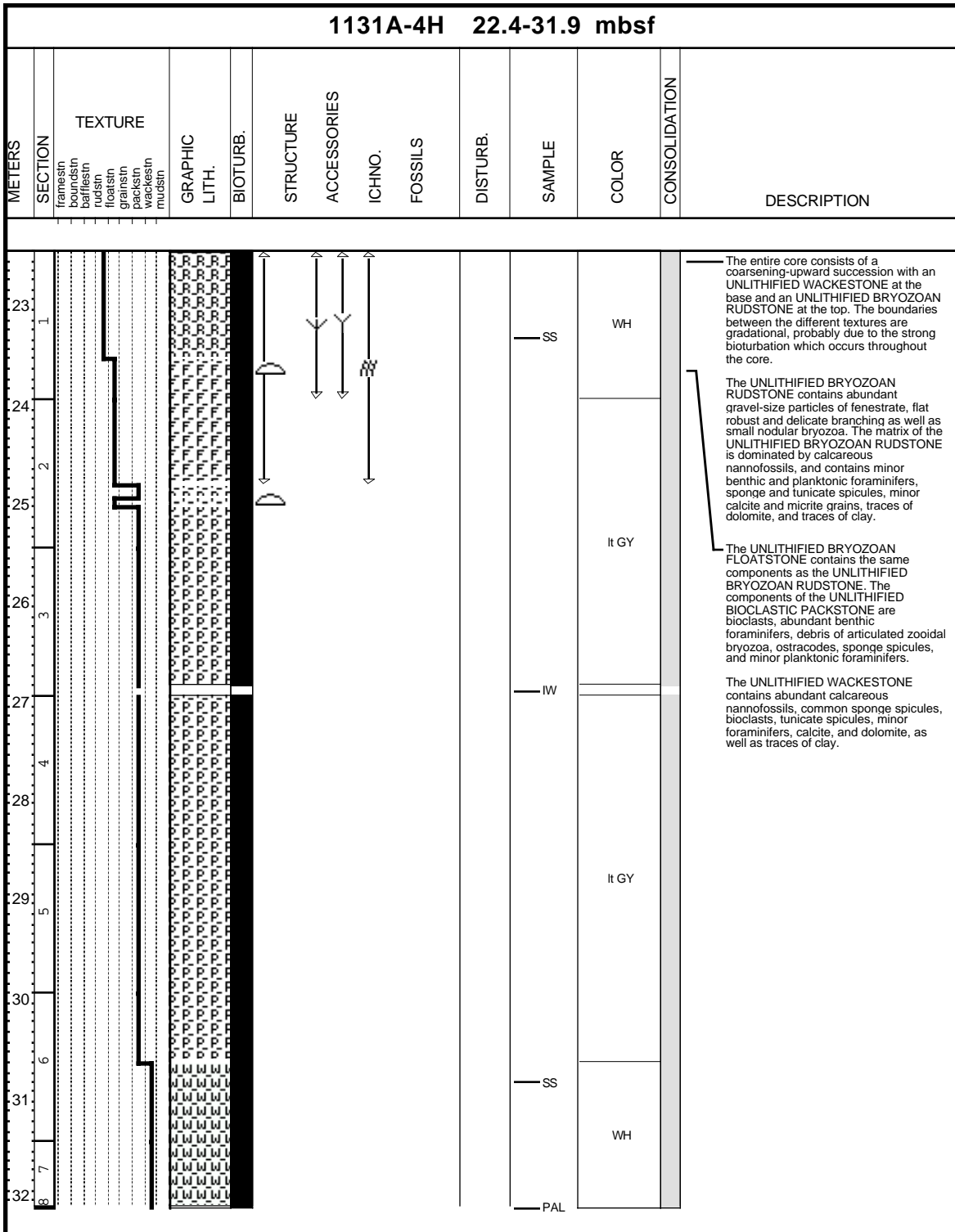


Core Photo



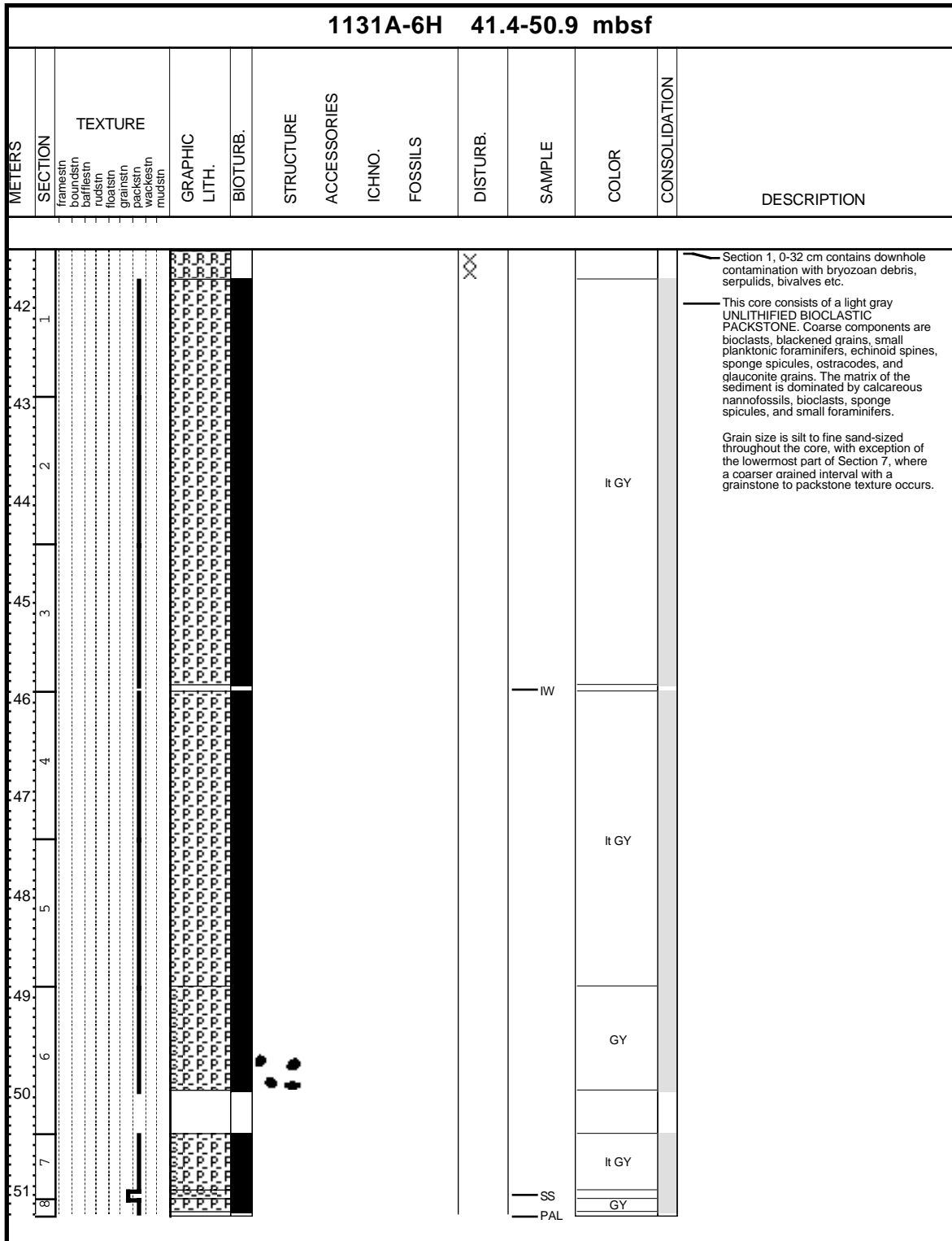
CORE DESCRIPTIONS
VISUAL CORE DESCRIPTIONS, SITE 1131

Core Photo

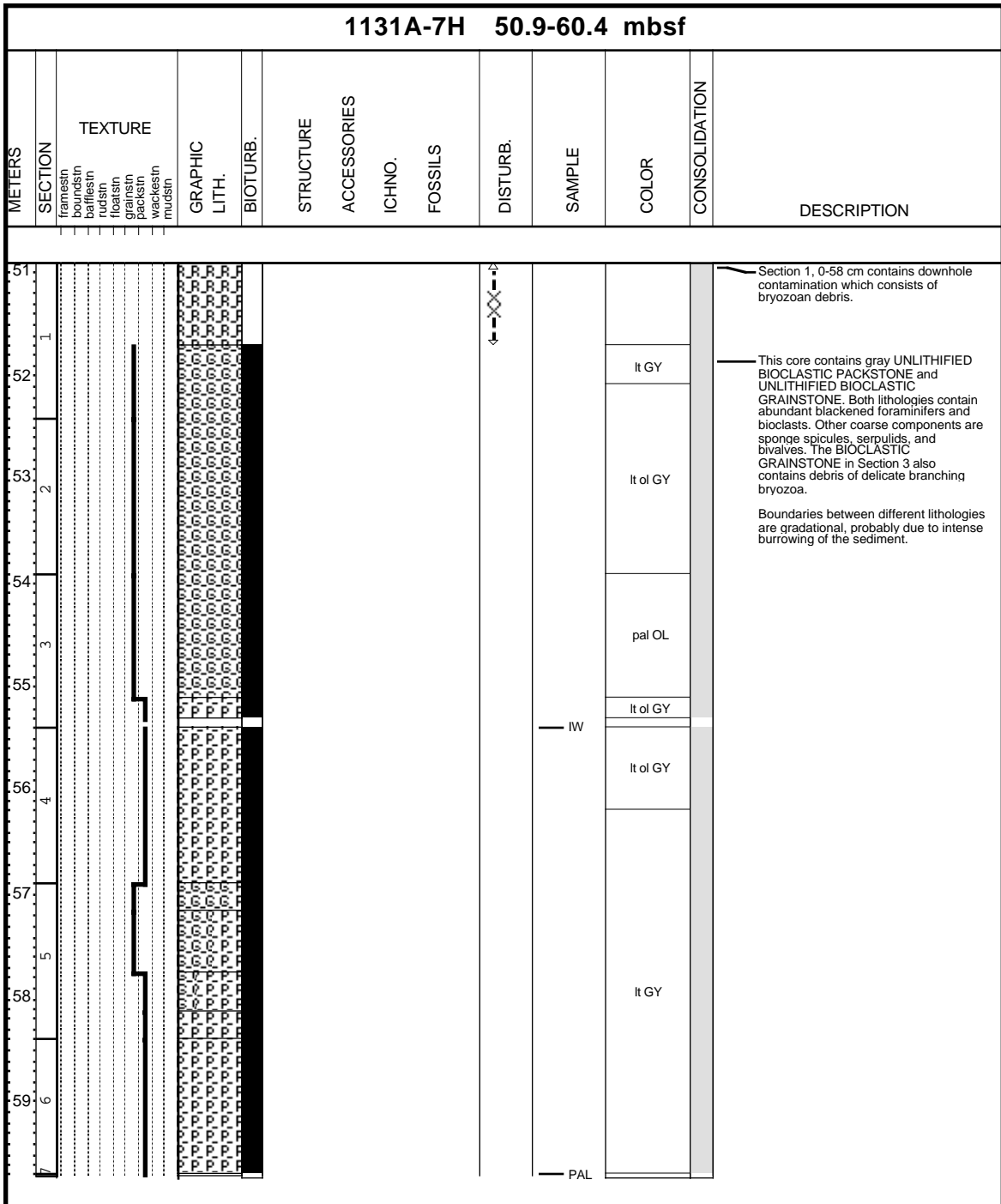


CORE DESCRIPTIONS
VISUAL CORE DESCRIPTIONS, SITE 1131

Core Photo

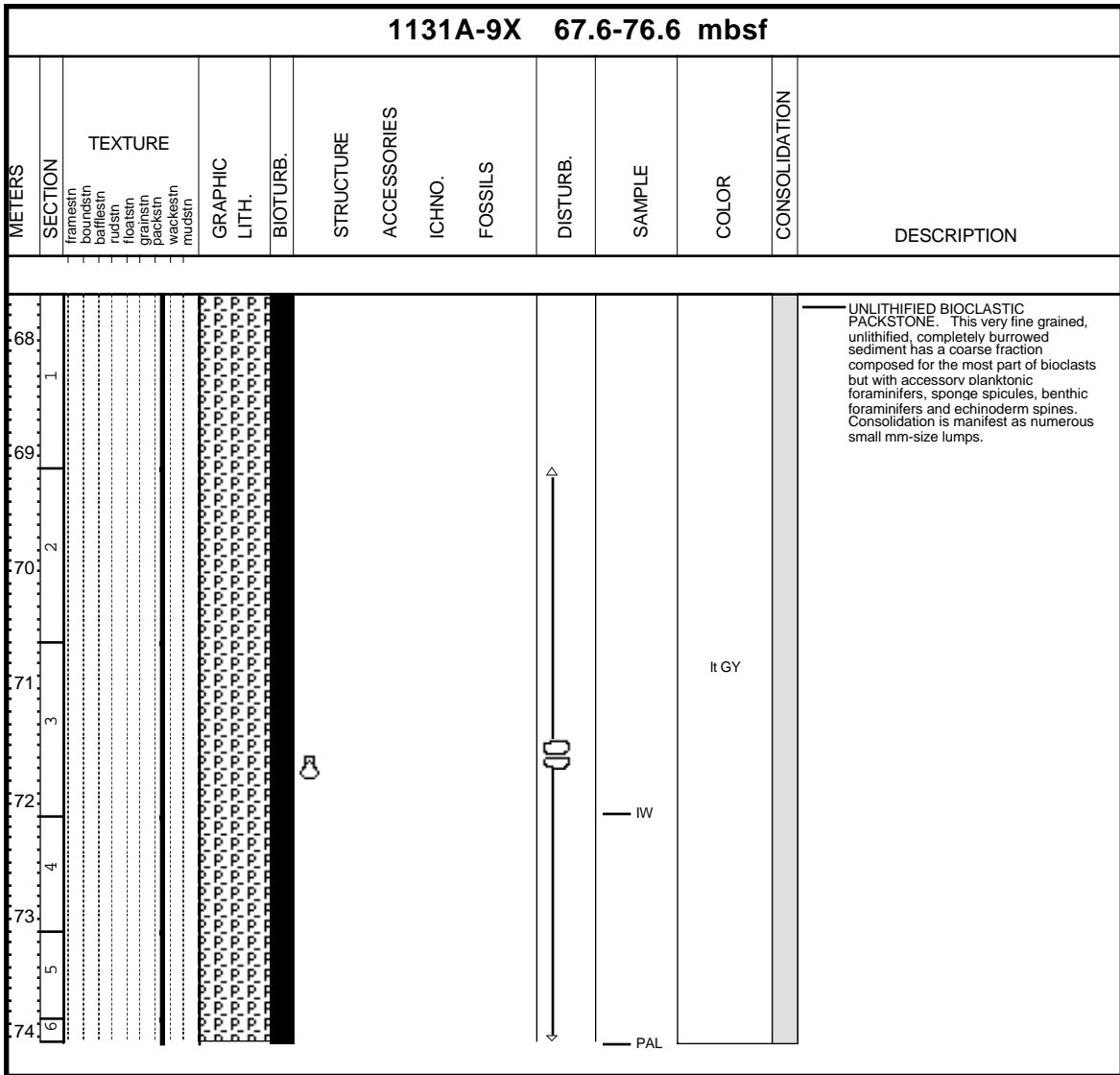


Core Photo

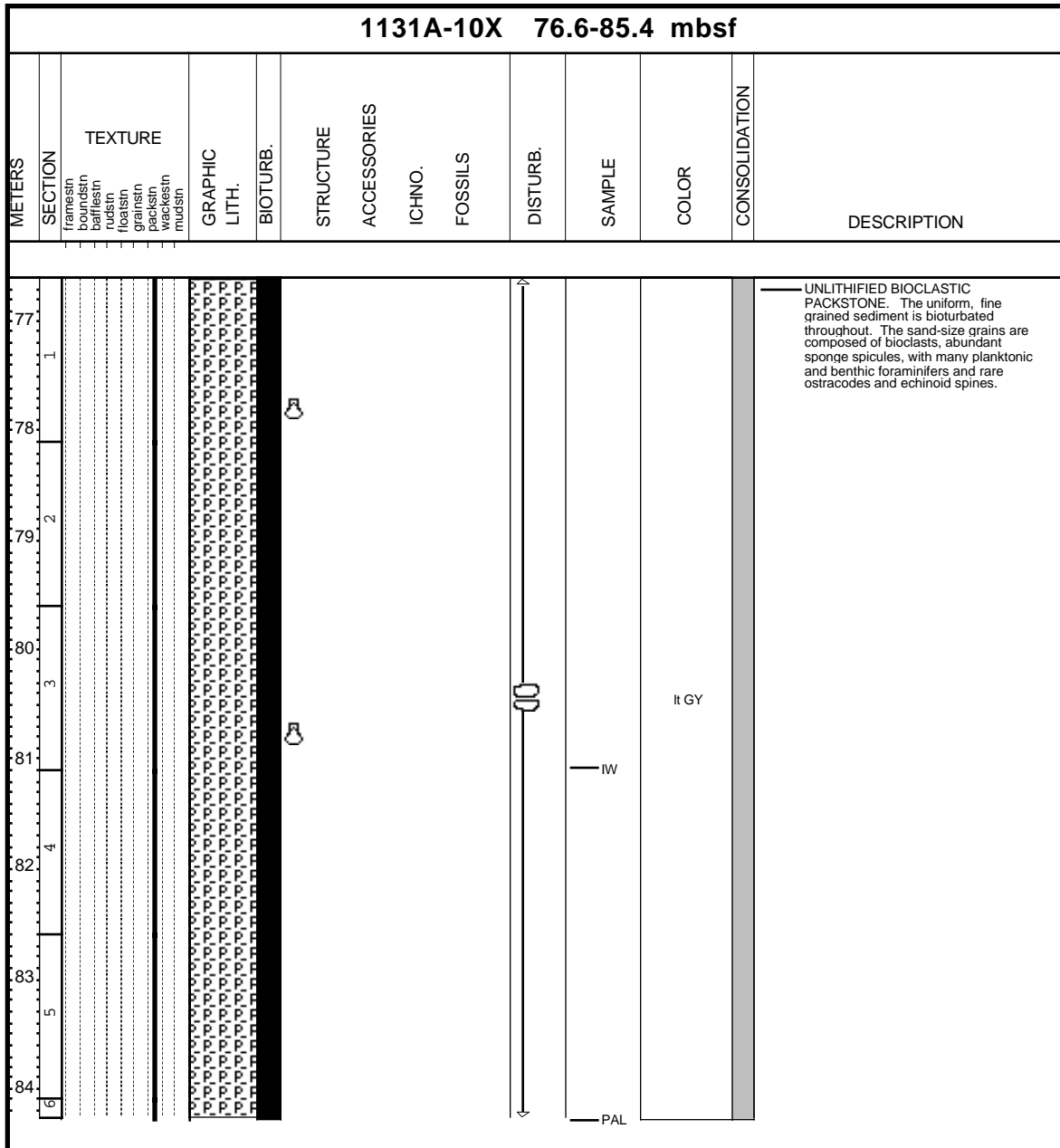


CORE DESCRIPTIONS
VISUAL CORE DESCRIPTIONS, SITE 1131

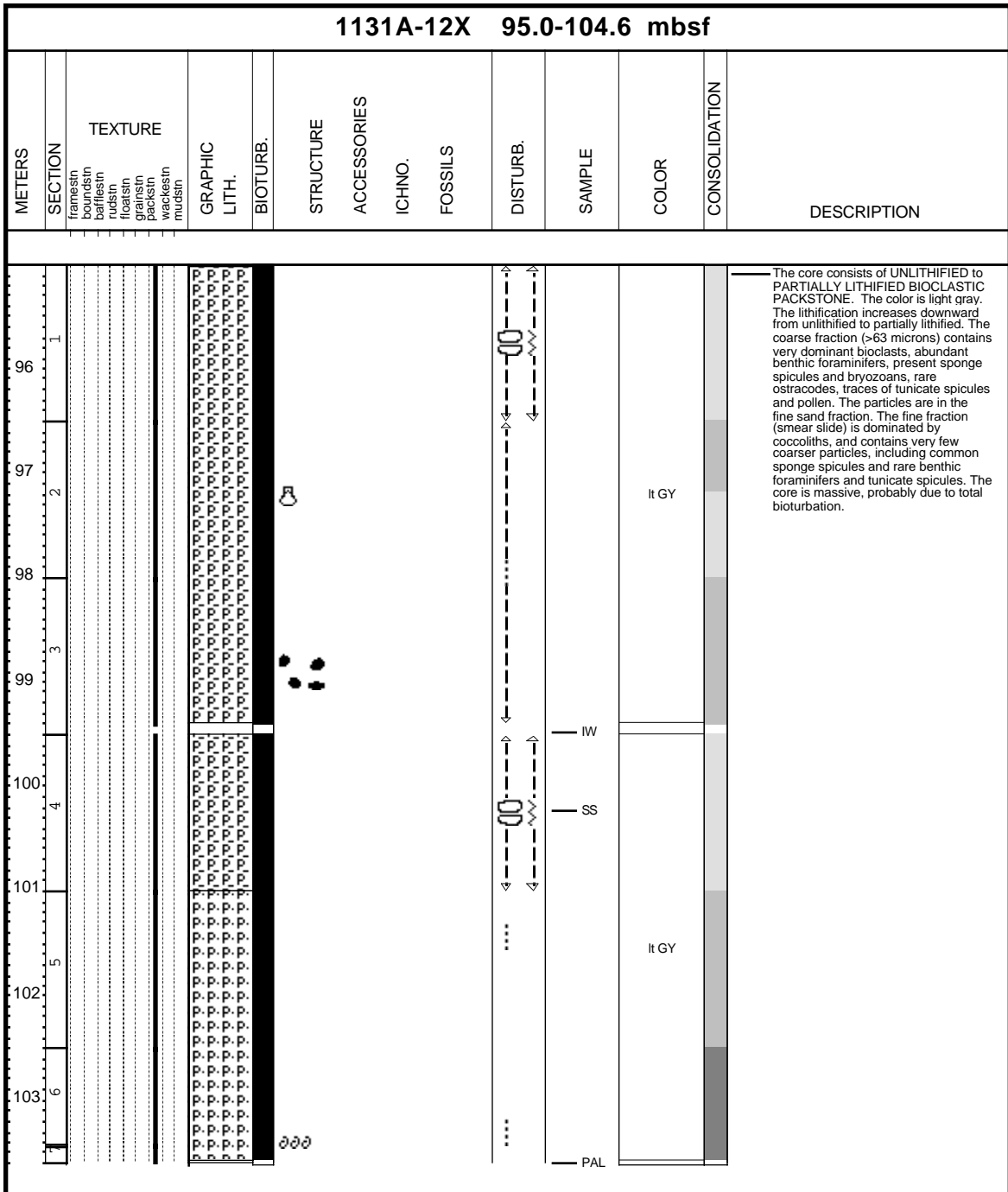
Core Photo



Core Photo

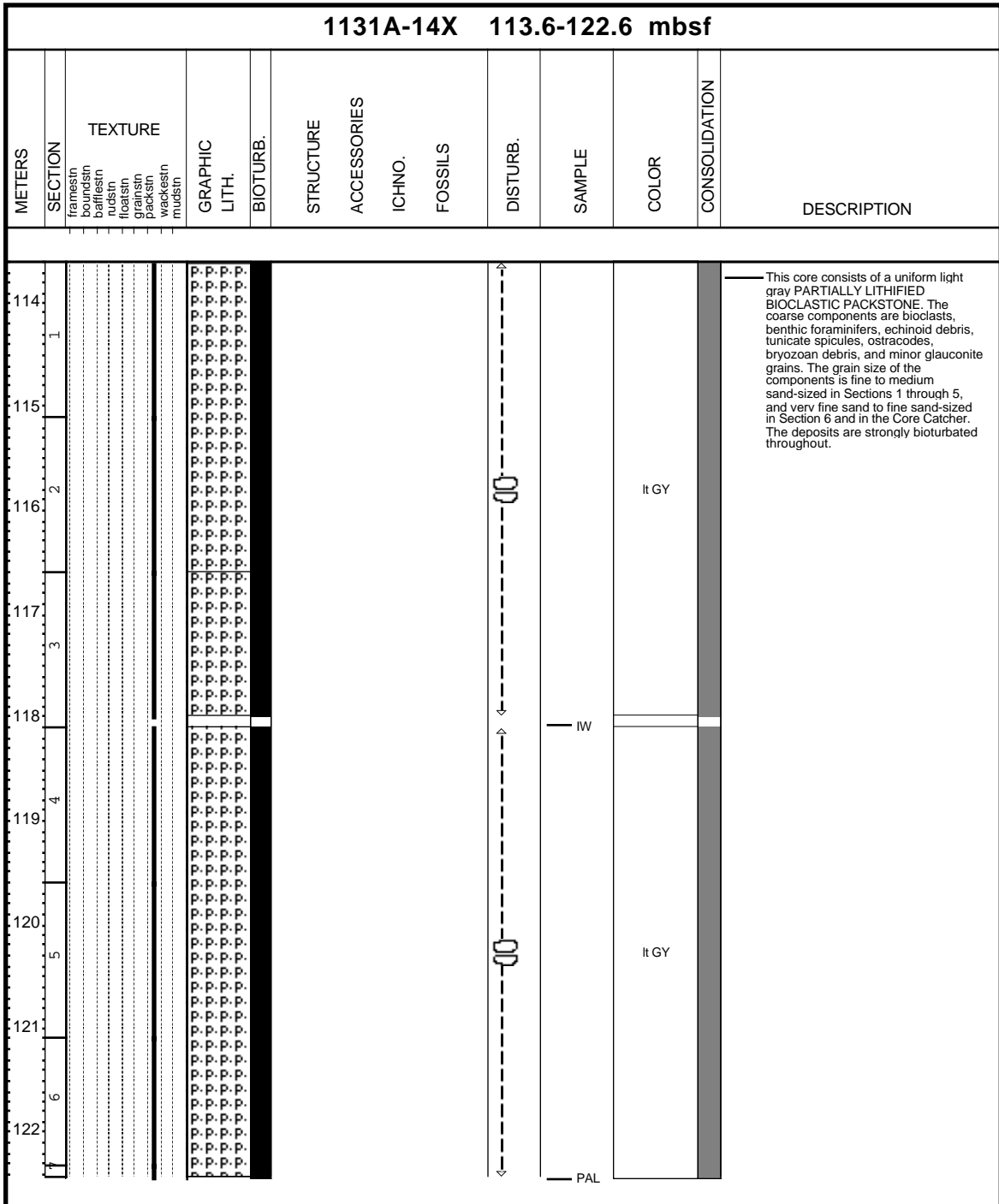


Core Photo

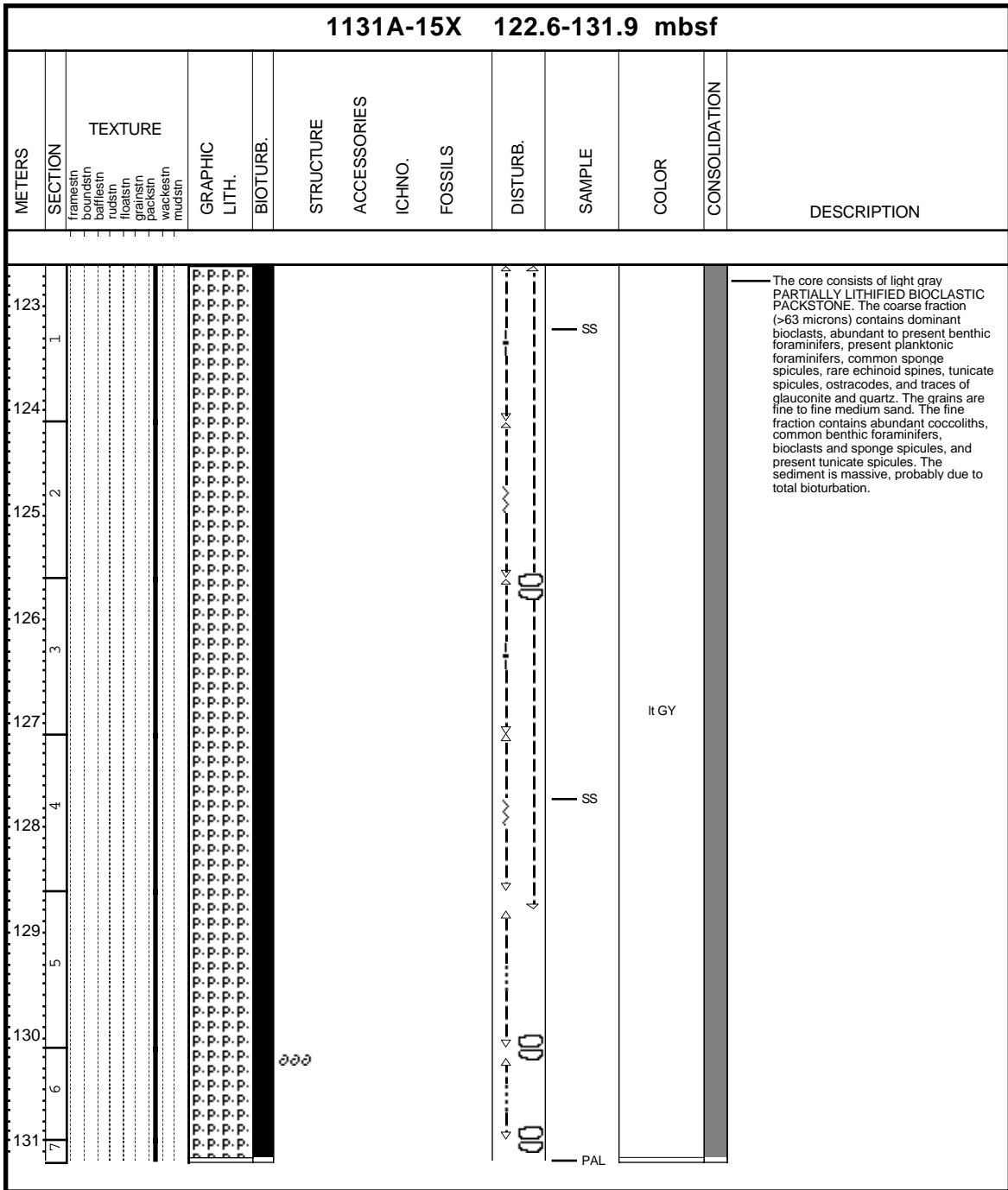


CORE DESCRIPTIONS
VISUAL CORE DESCRIPTIONS, SITE 1131

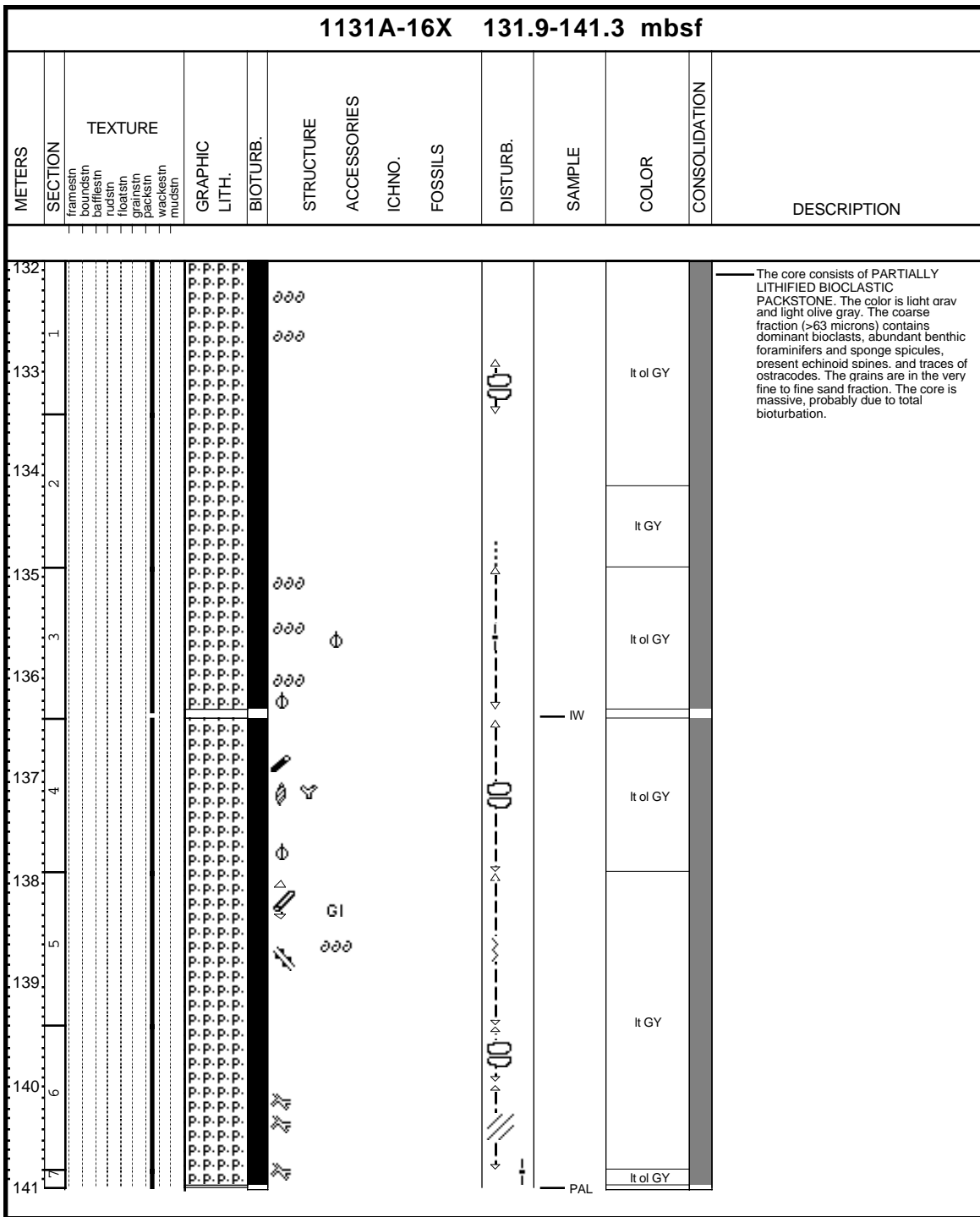
Core Photo



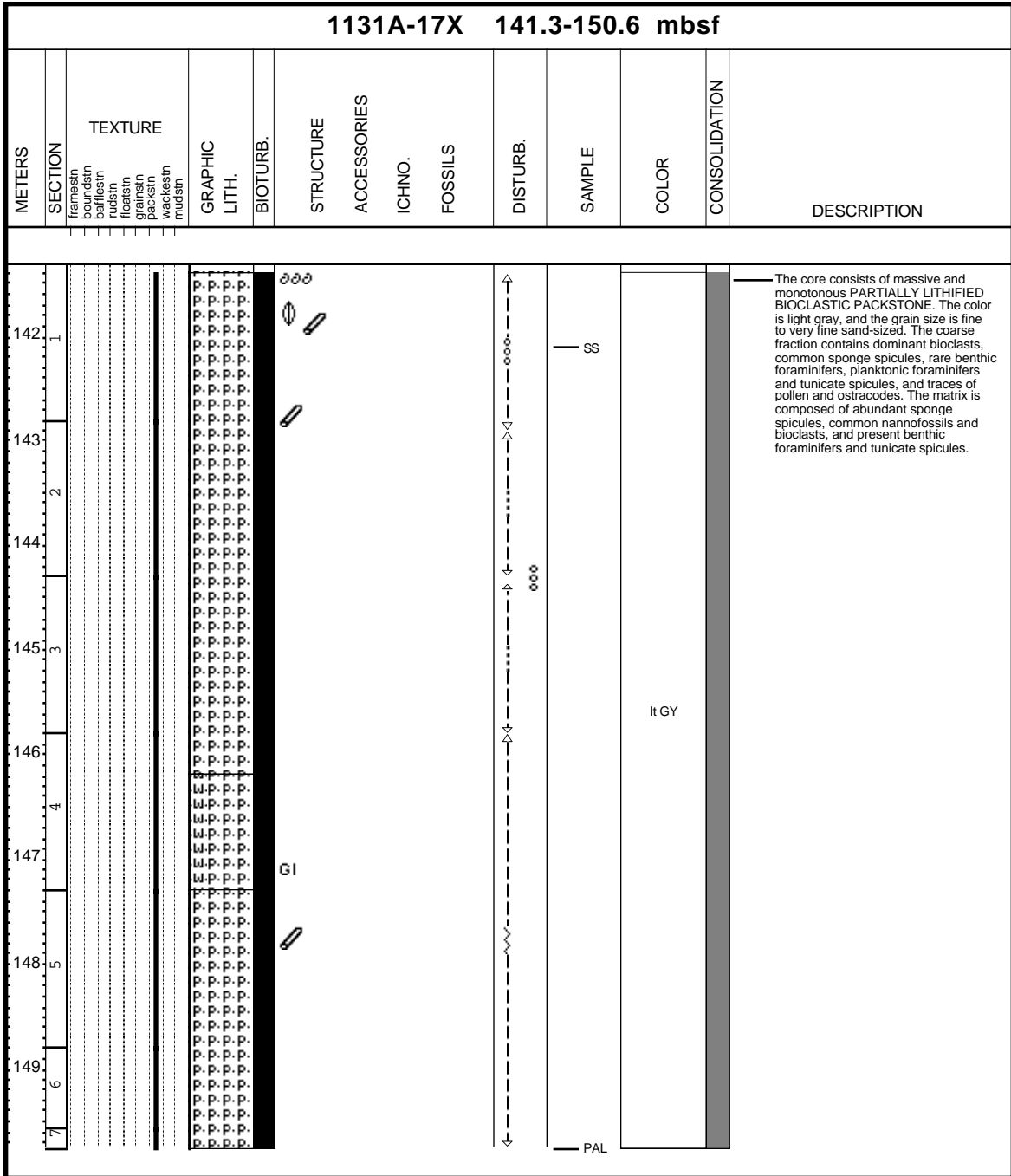
Core Photo



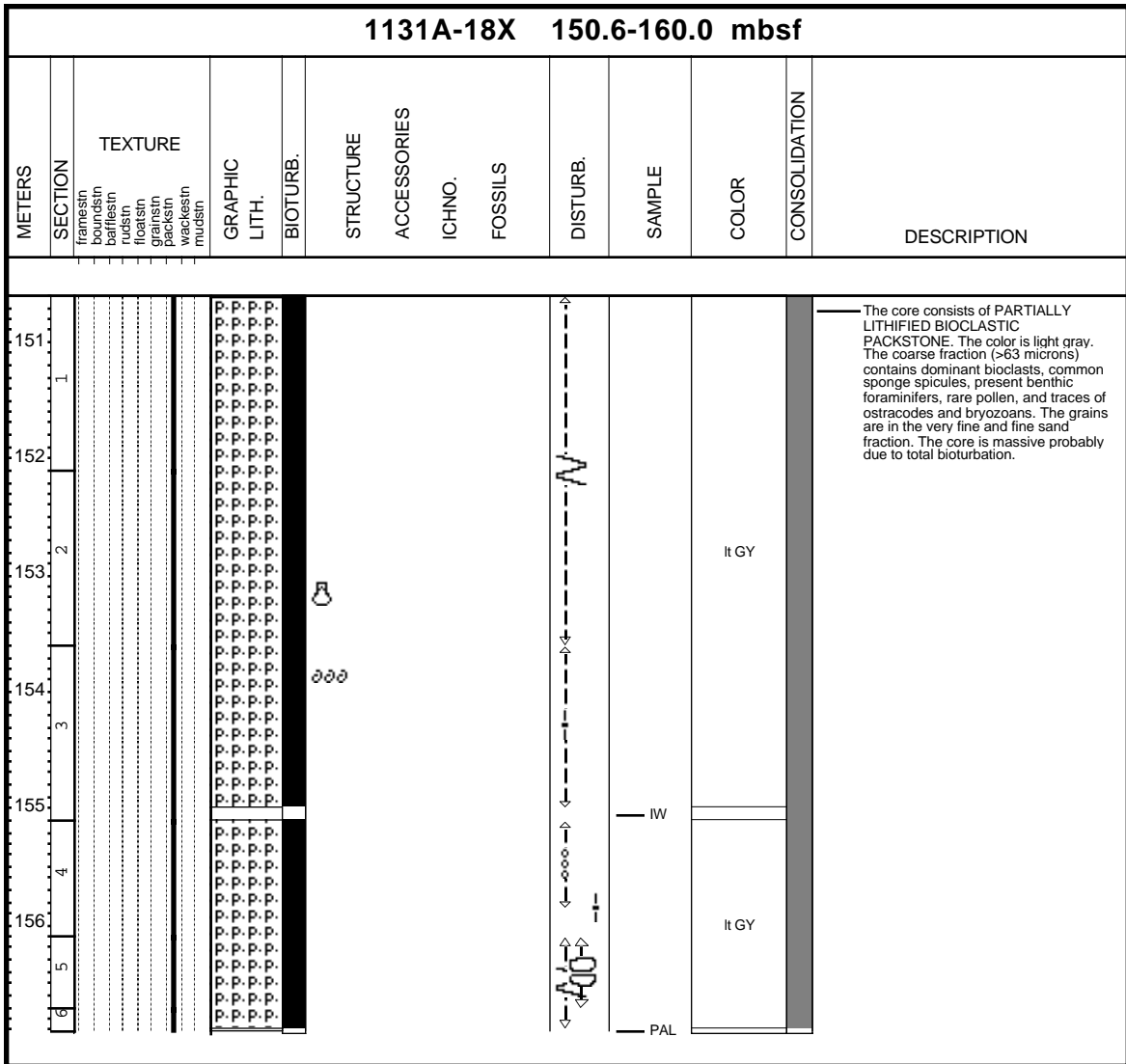
Core Photo



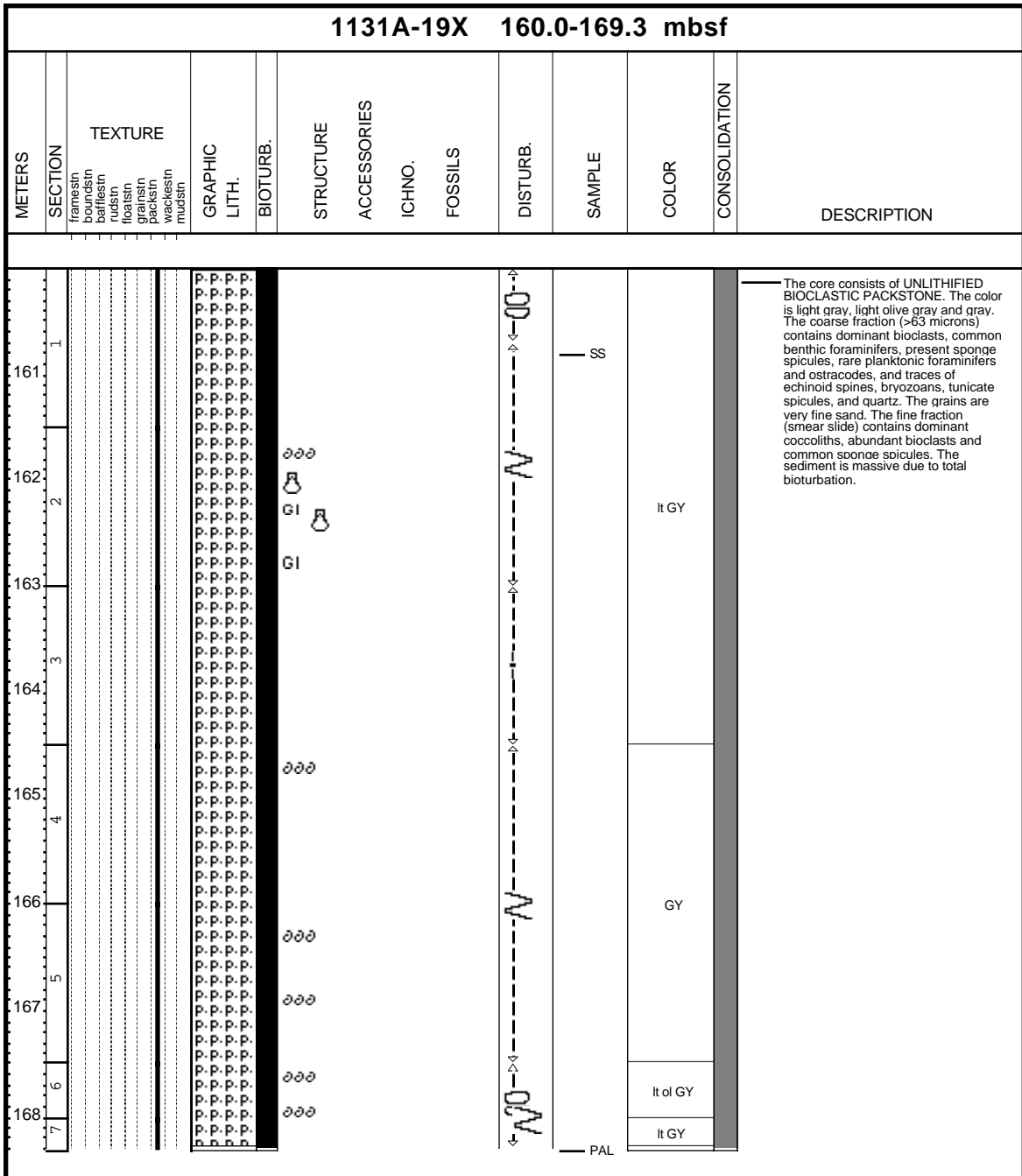
Core Photo



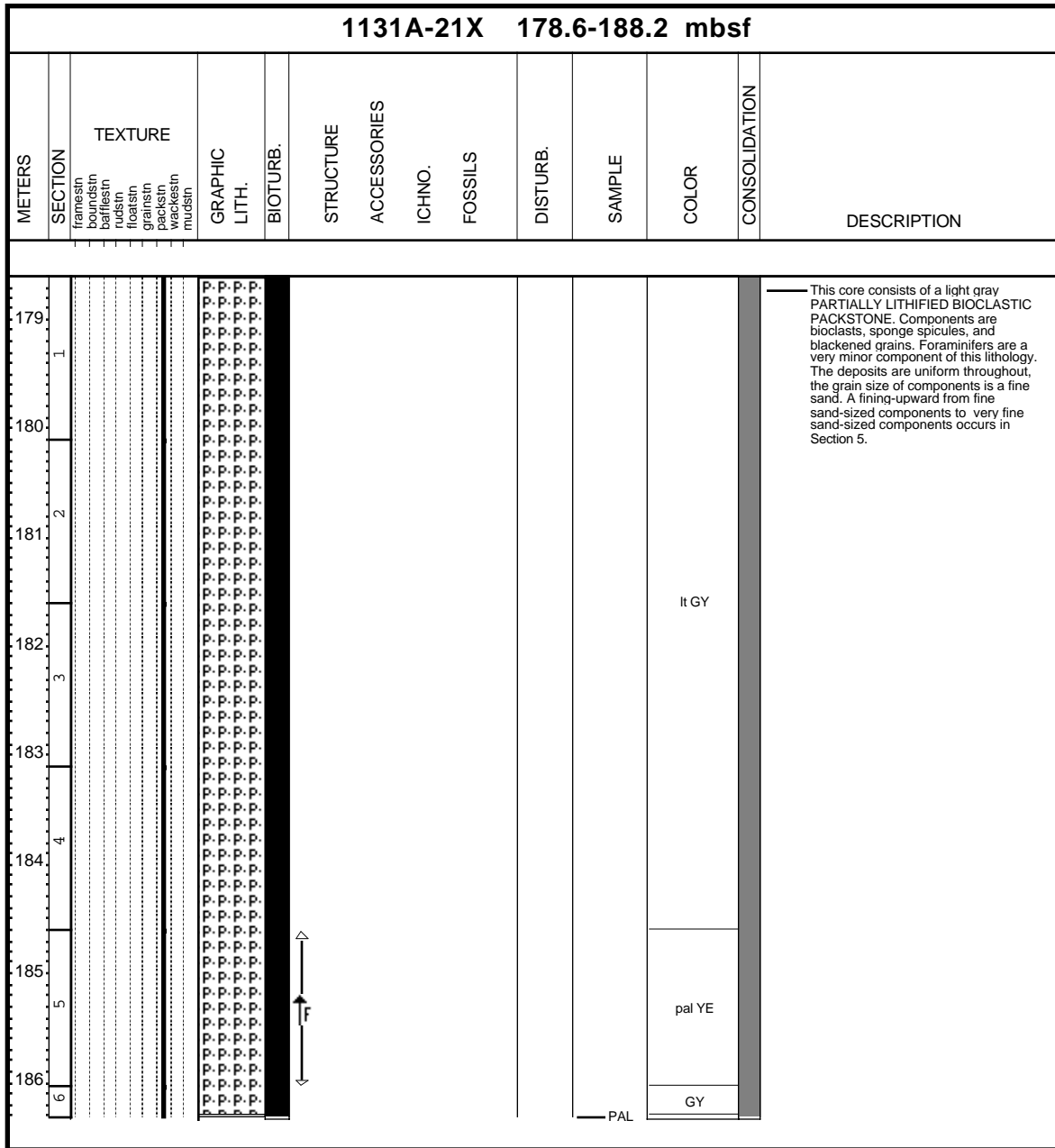
Core Photo



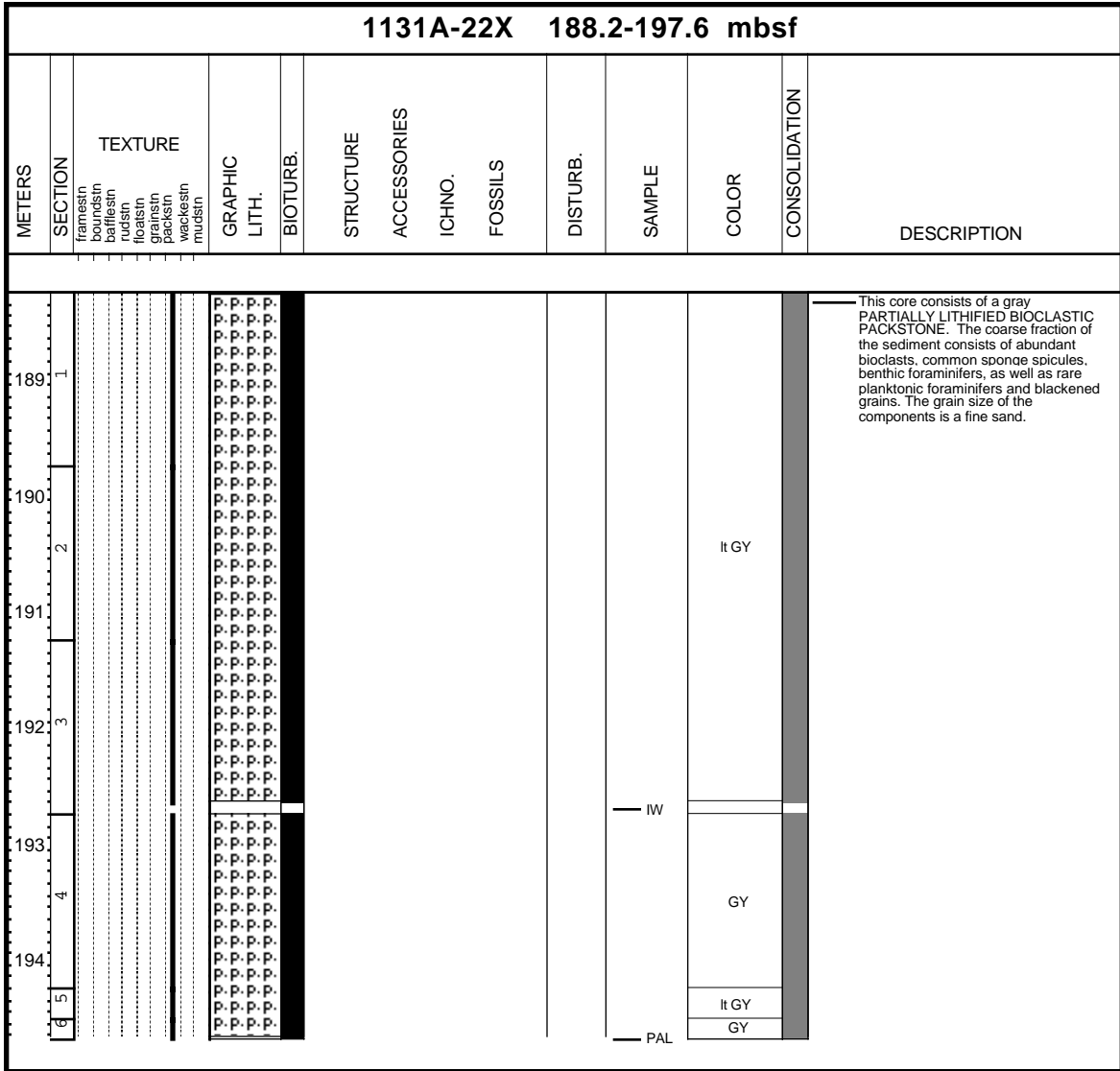
Core Photo



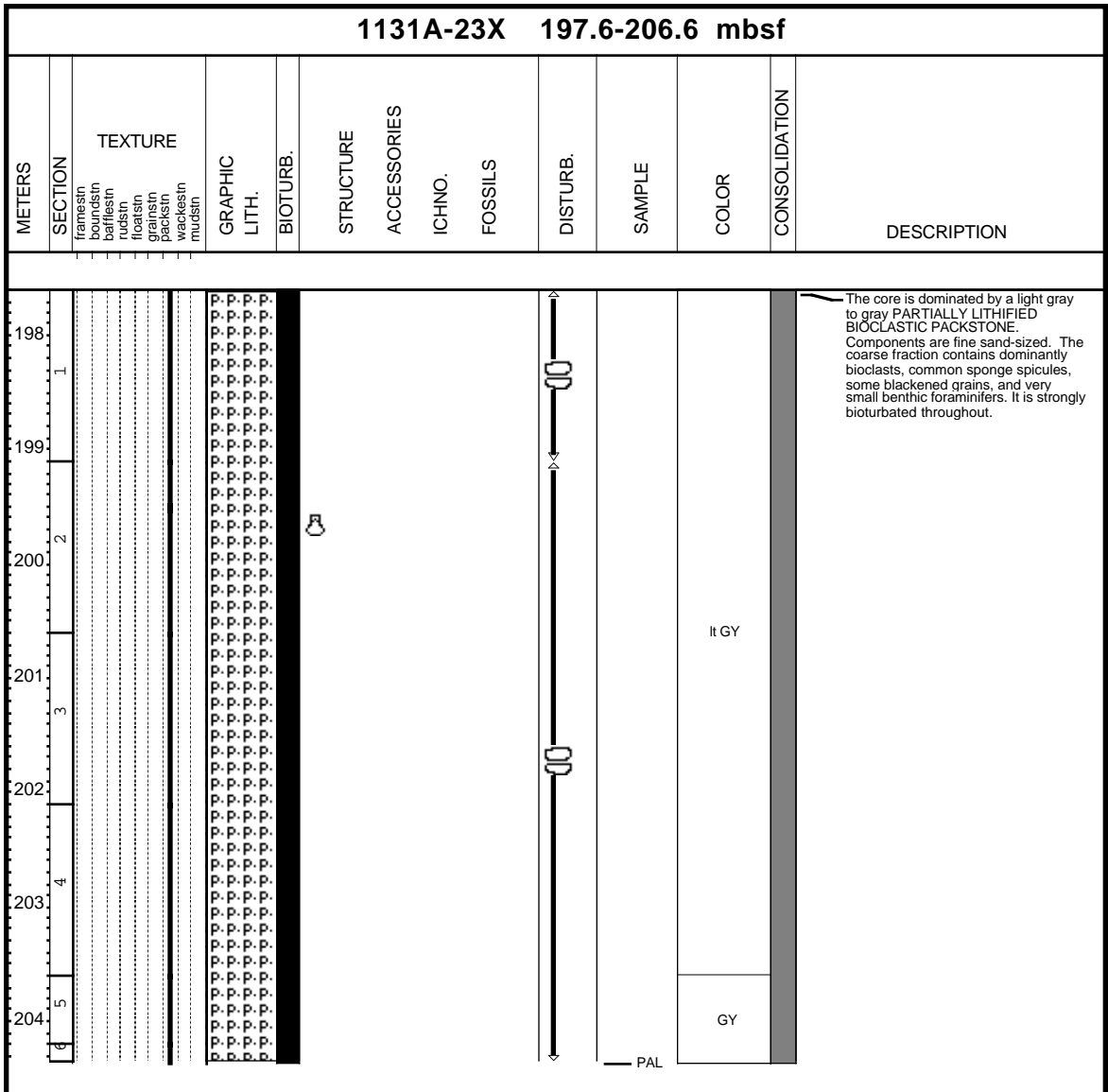
Core Photo



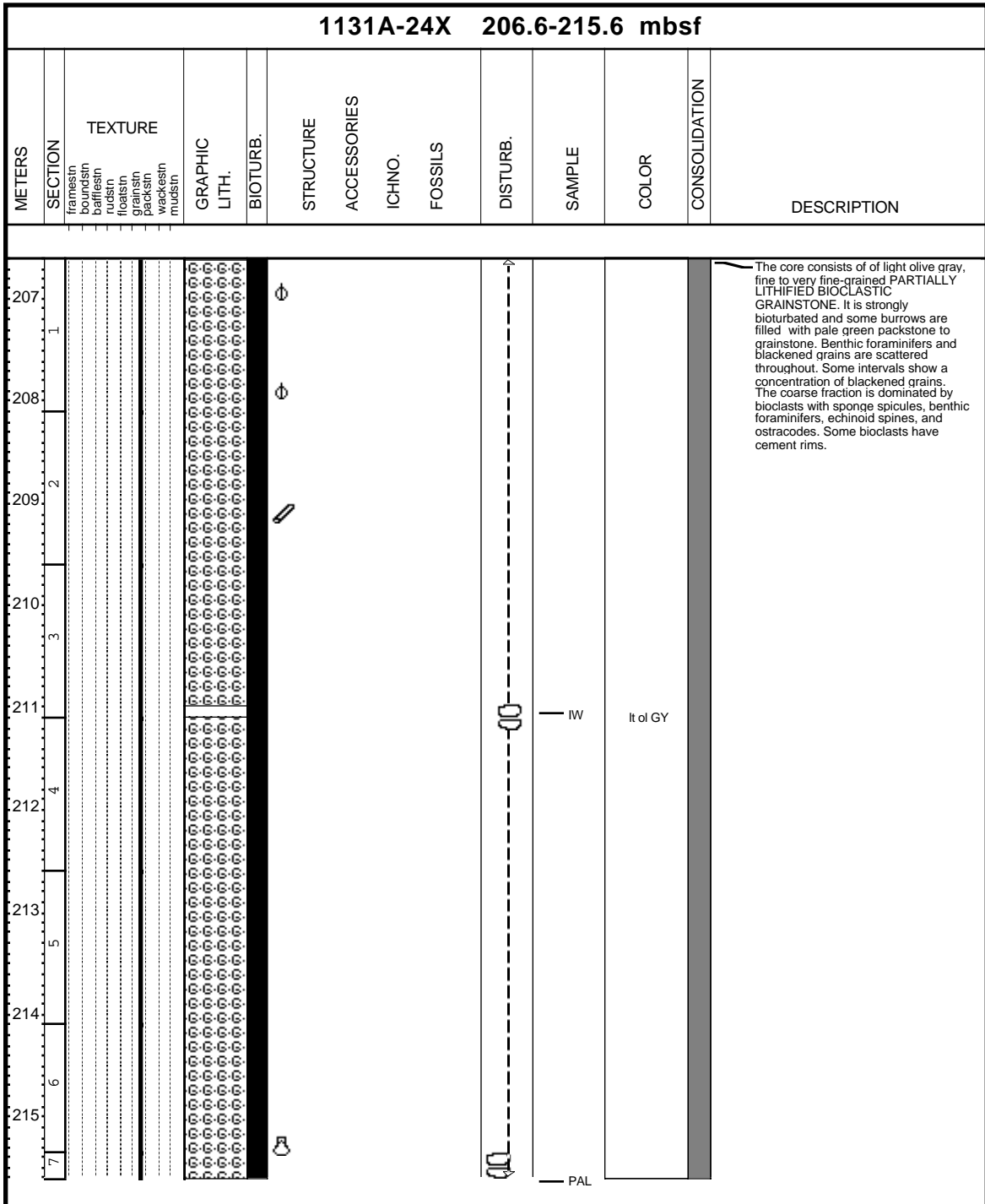
Core Photo



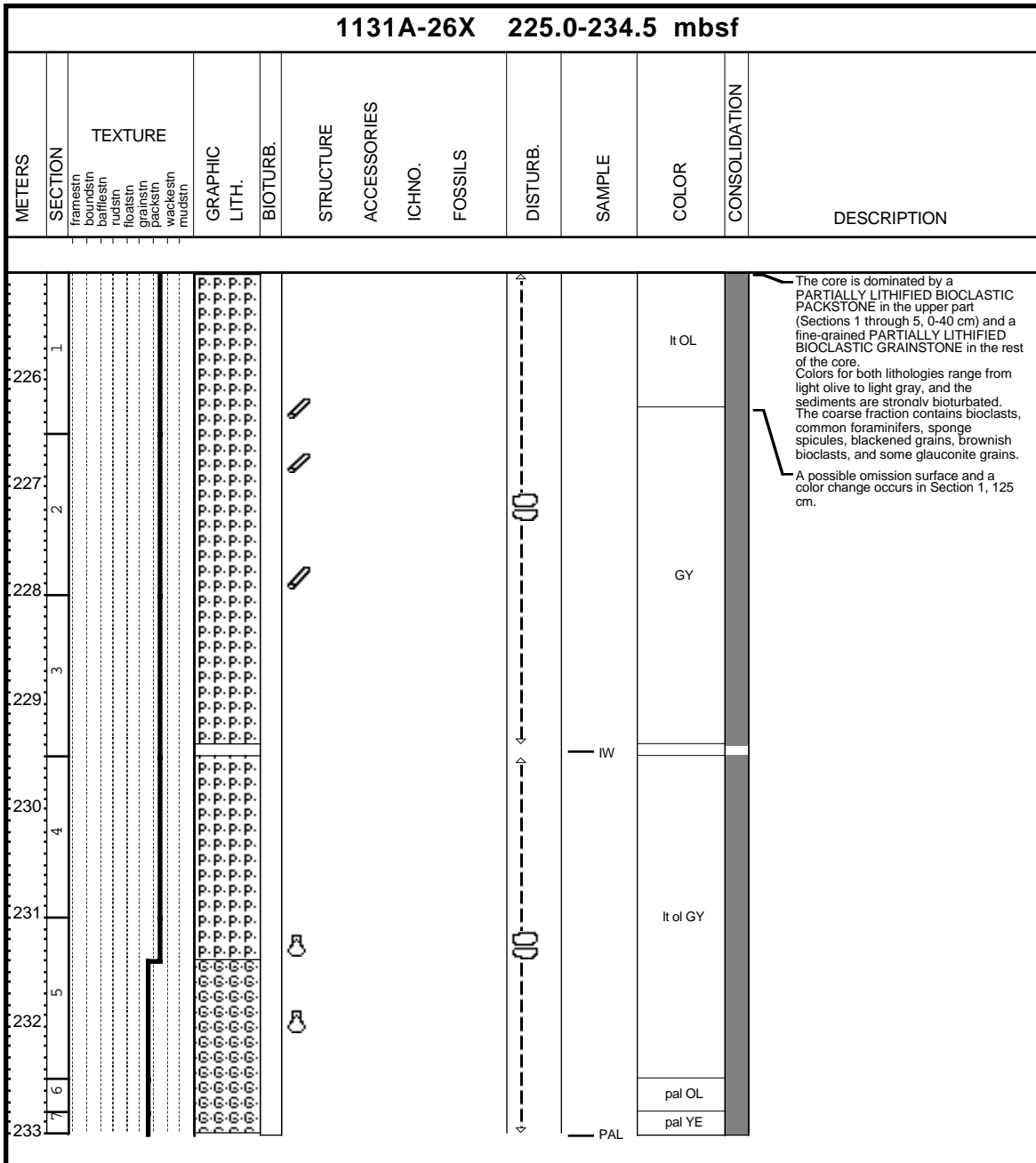
Core Photo



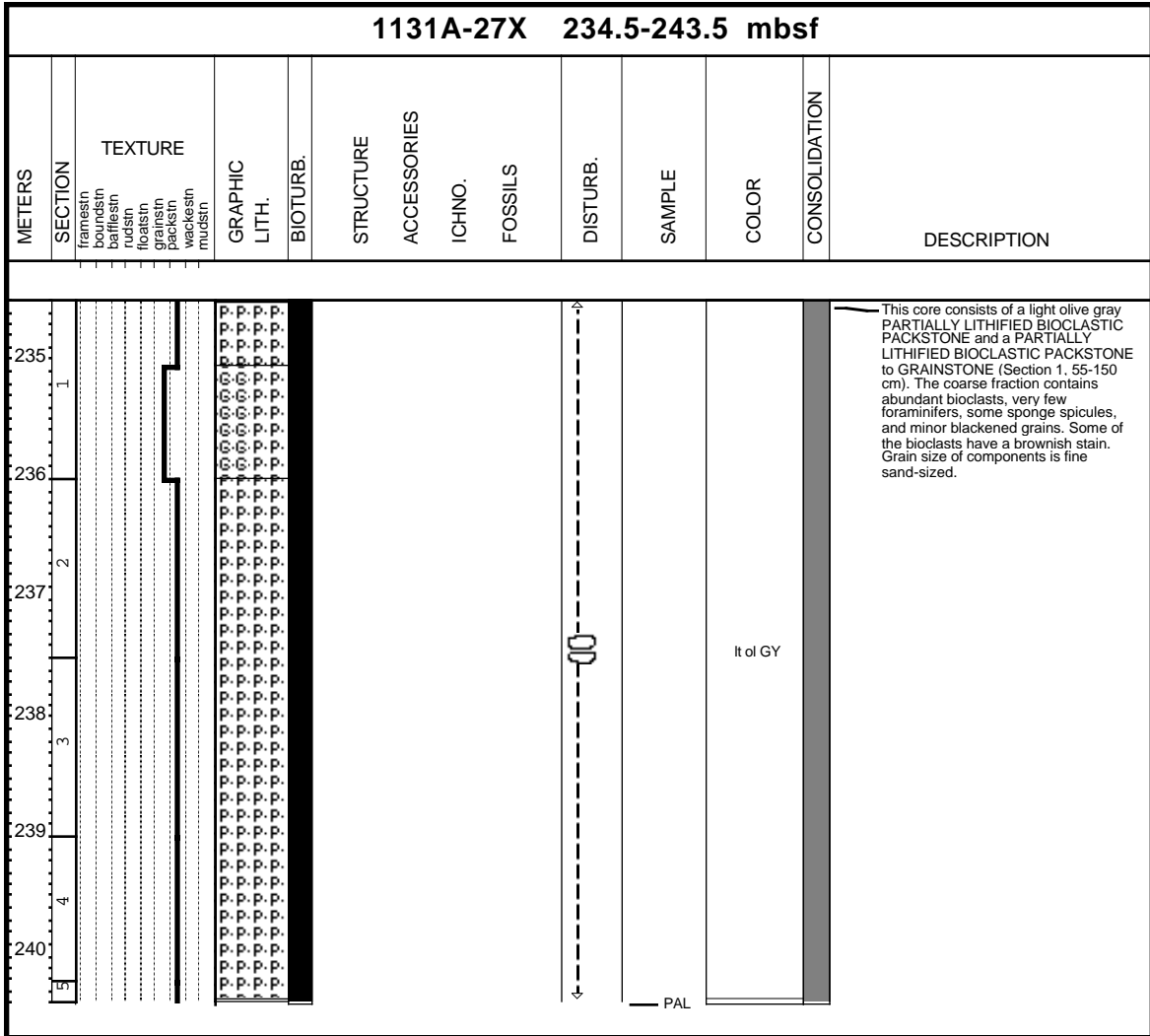
Core Photo



Core Photo

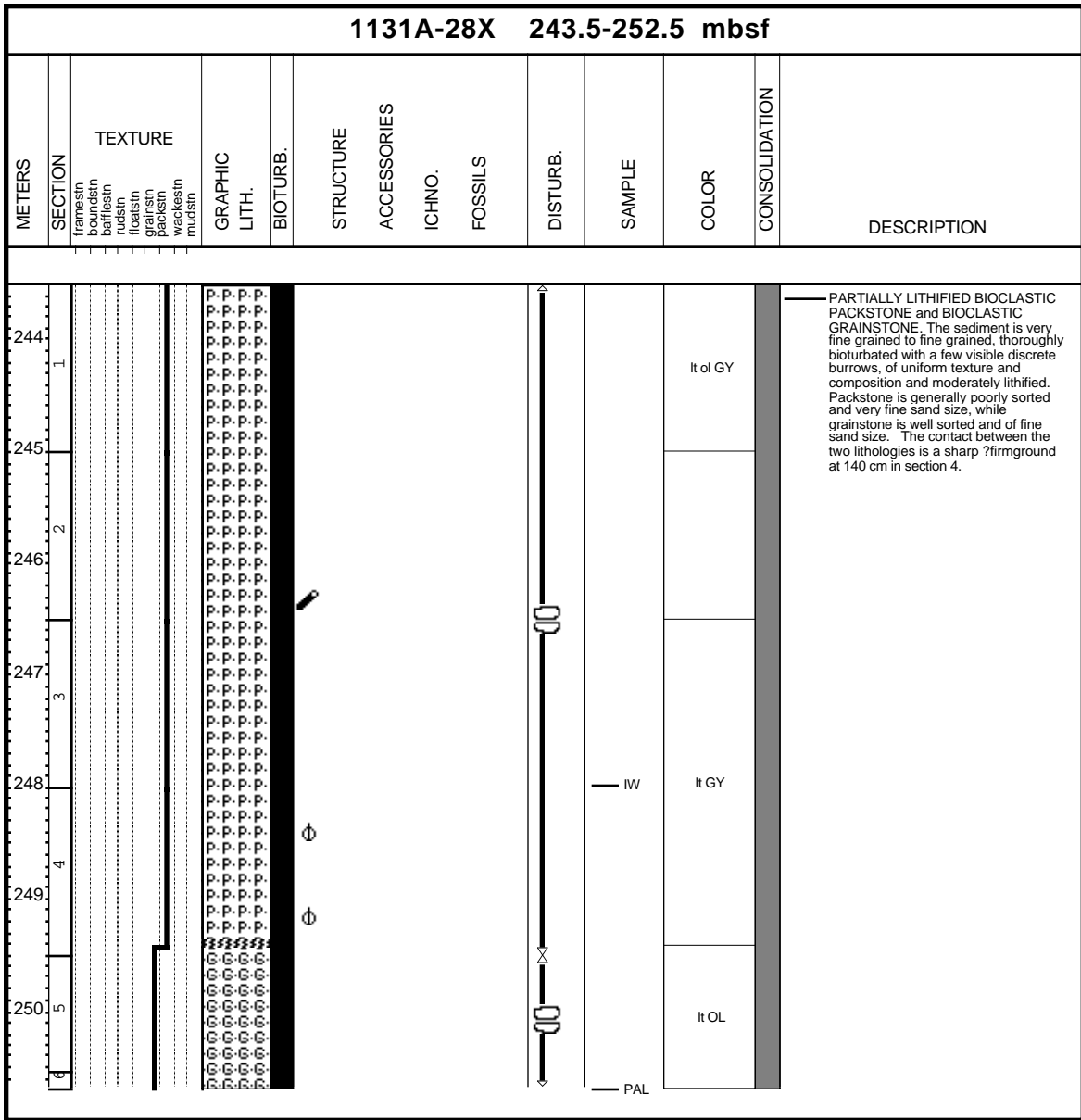


Core Photo



PAL

Core Photo

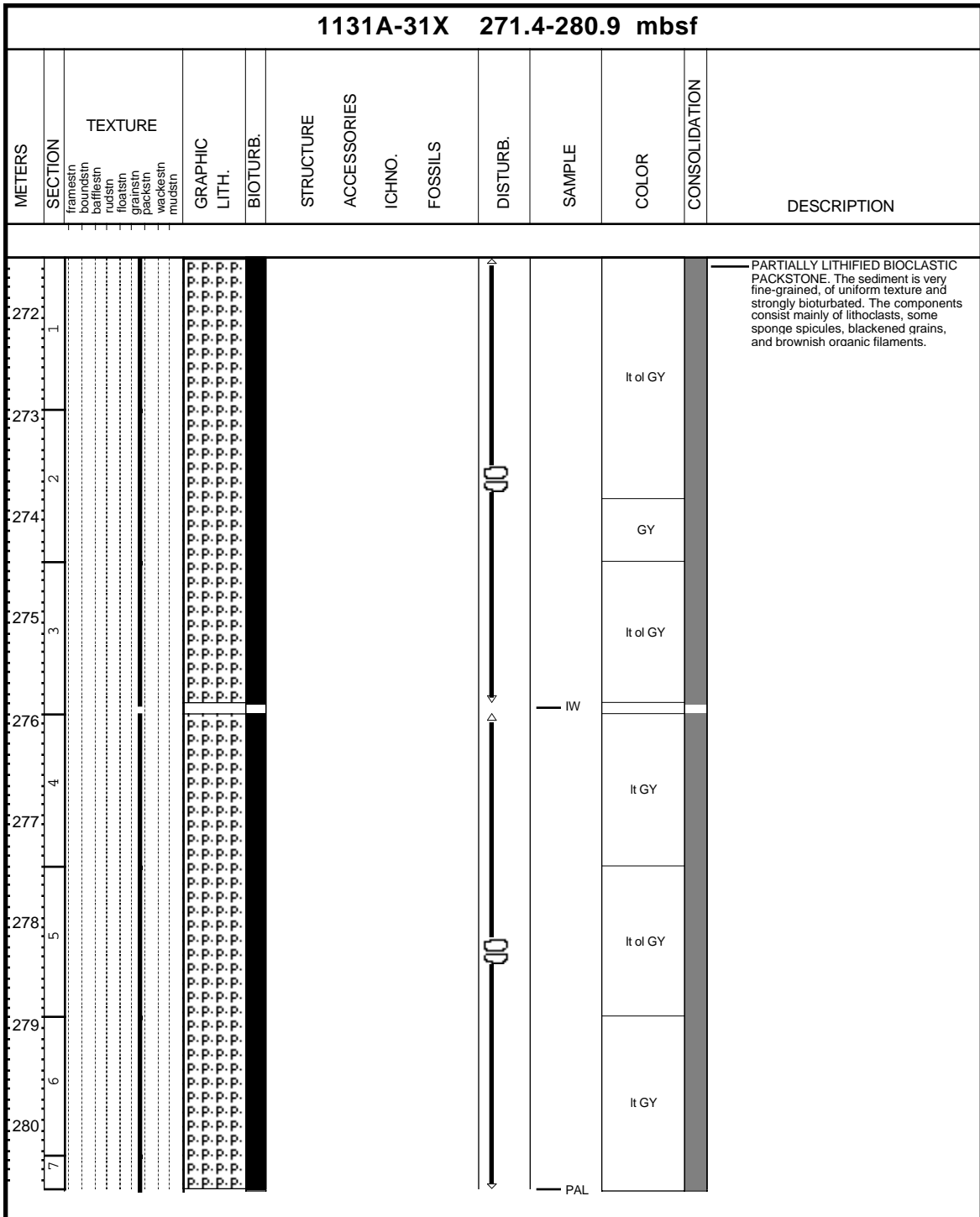


1131A-29X TO PALEO

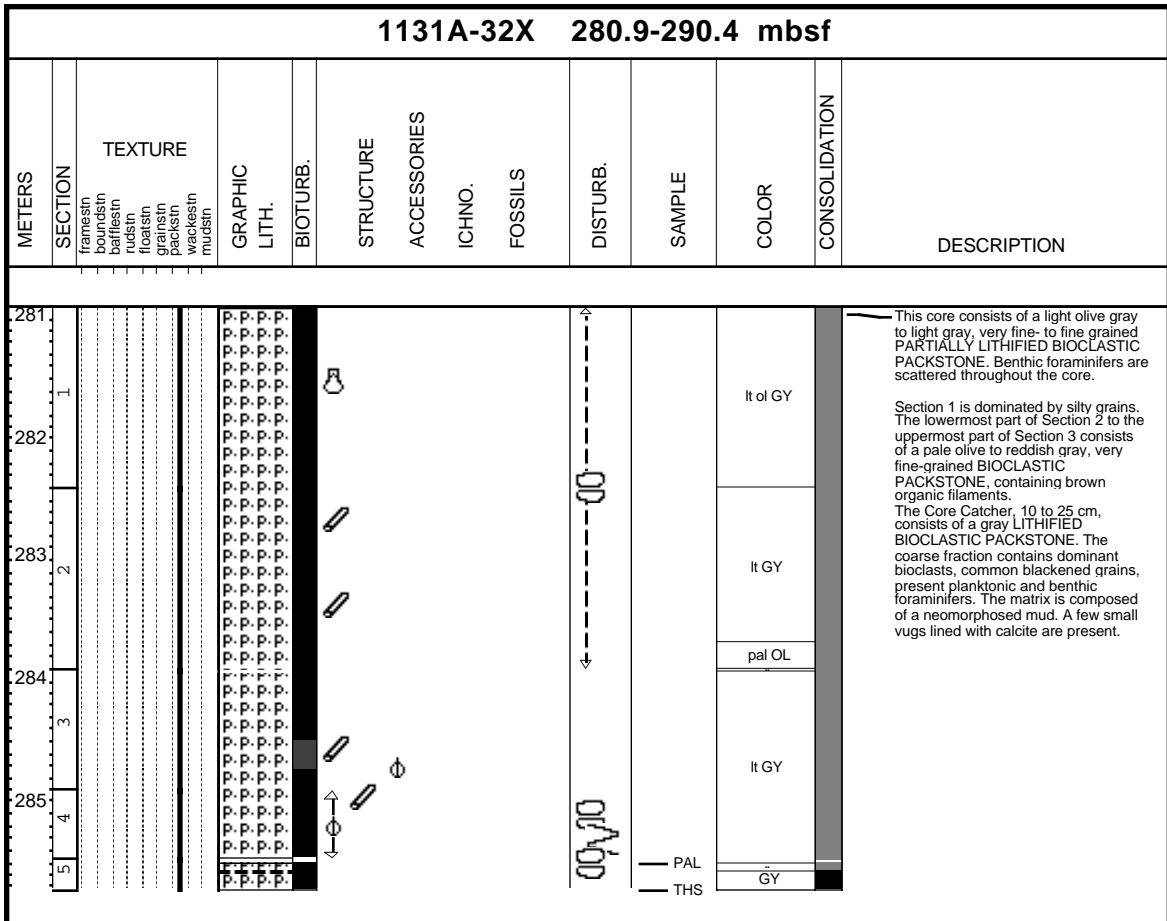
Core Photo

1131A-30X 262.0-271.4 mbsf													
METERS	SECTION	TEXTURE	GRAPHIC LITH.	BIOTURB.	STRUCTURE	ACCESSORIES	ICHNO.	FOSSILS	DISTURB.	SAMPLE	COLOR	CONSOLIDATION	DESCRIPTION
263.0	1	framestr foramin buffestr rudstr foolstr grainstr packstr wackestr mudstr									lt GY lt of GY		<p>— BIOCLASTIC PACKSTONE. The sediment is moderately consolidated, very fine-grained, of uniform composition and texture, and thoroughly bioturbated. The sand grains are mostly bioclasts but include some blackened skeletal particles.</p>

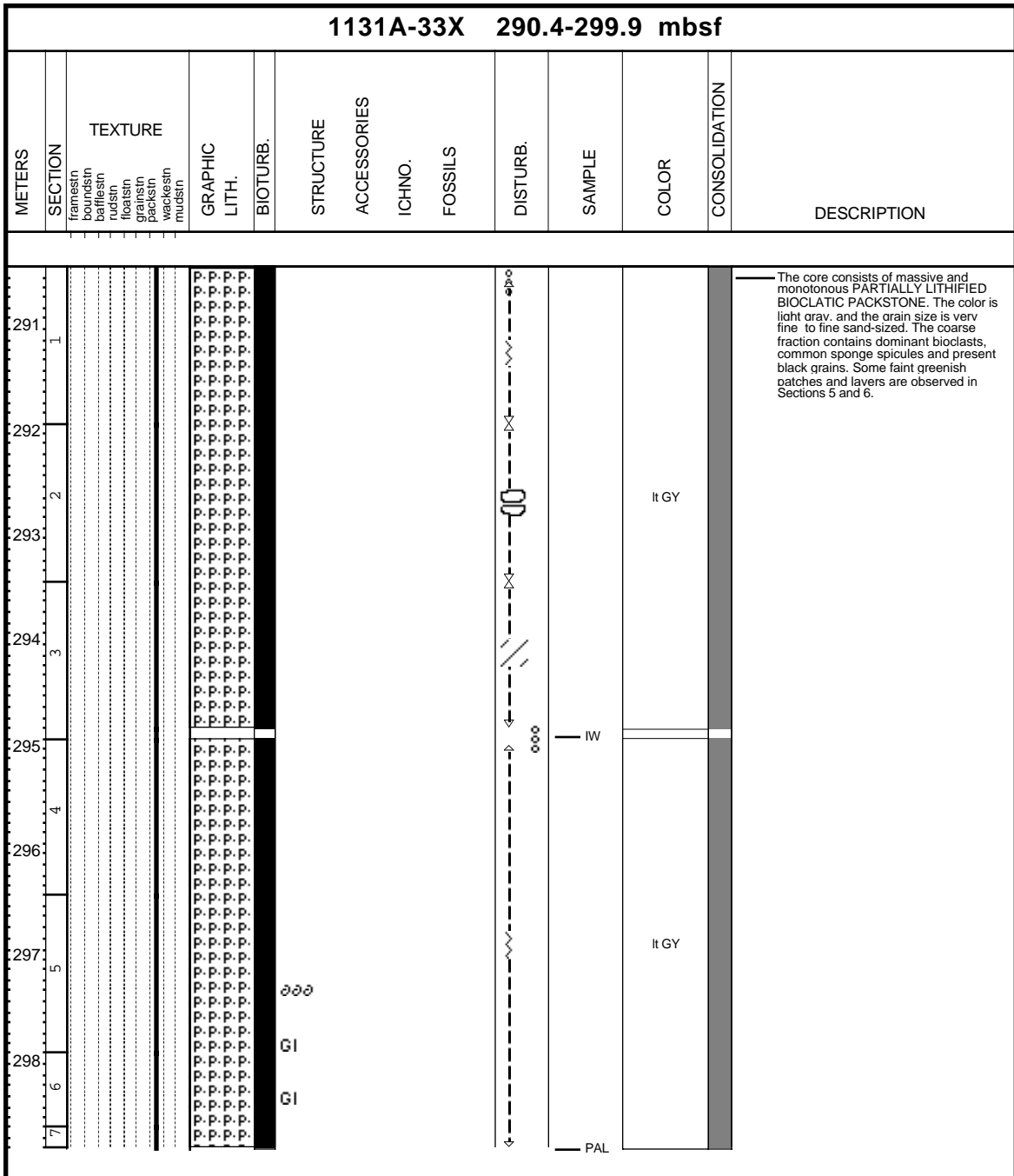
Core Photo



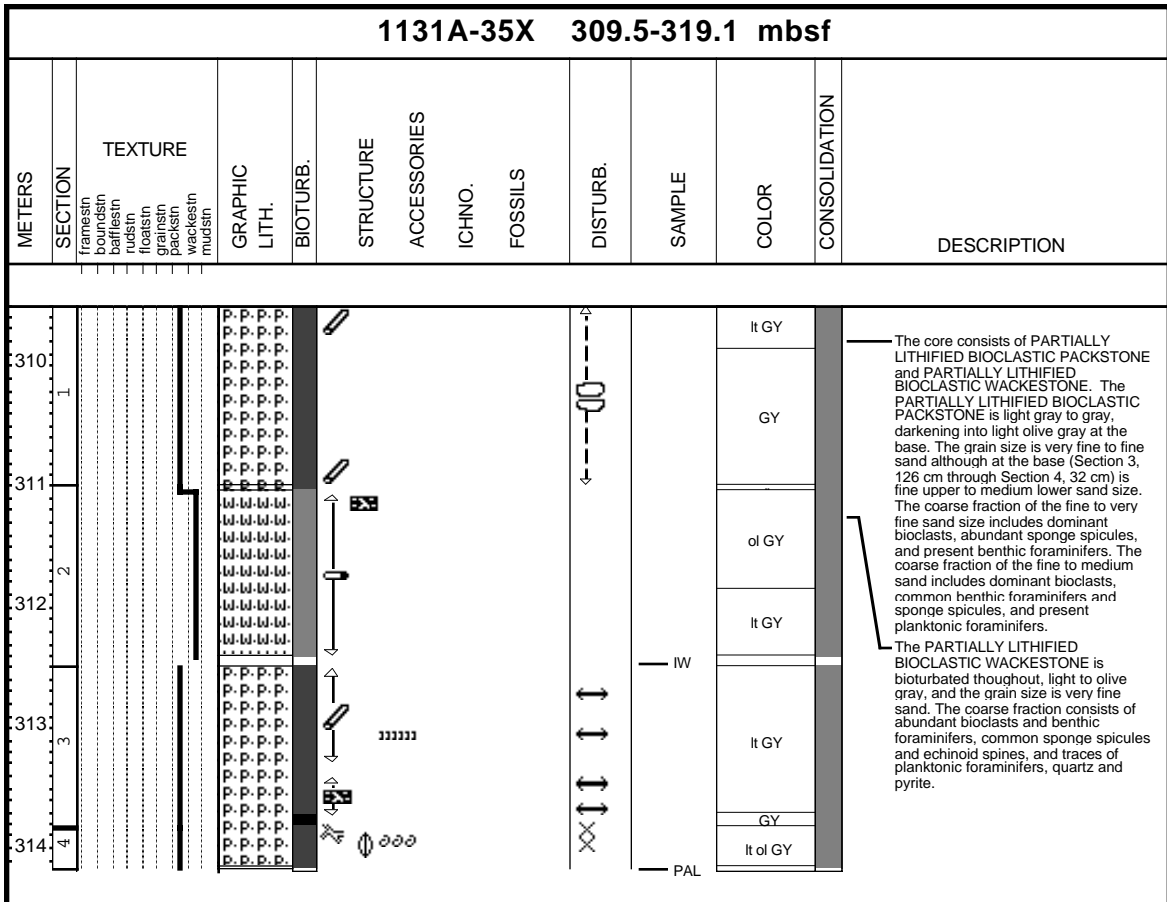
Core Photo



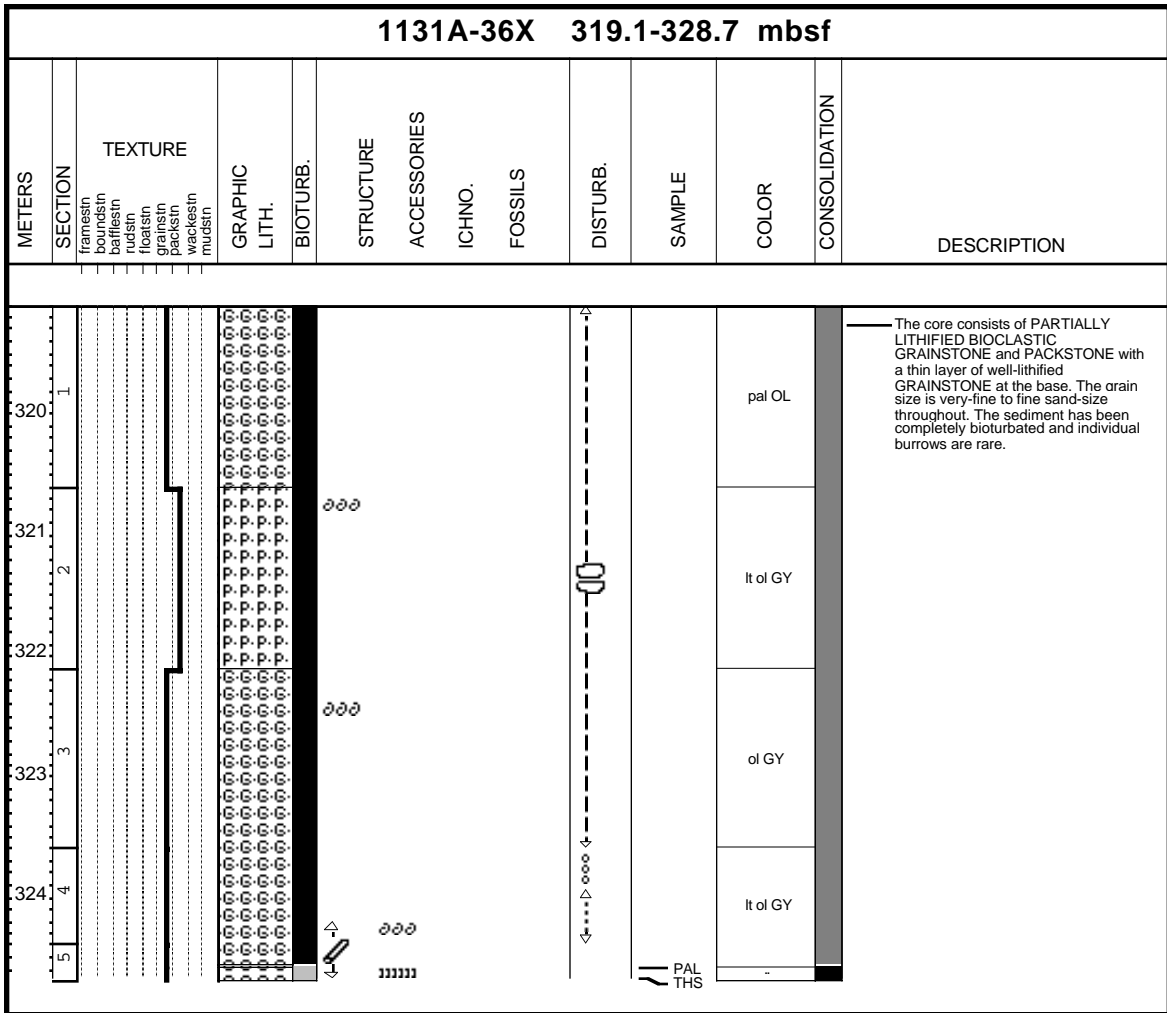
Core Photo



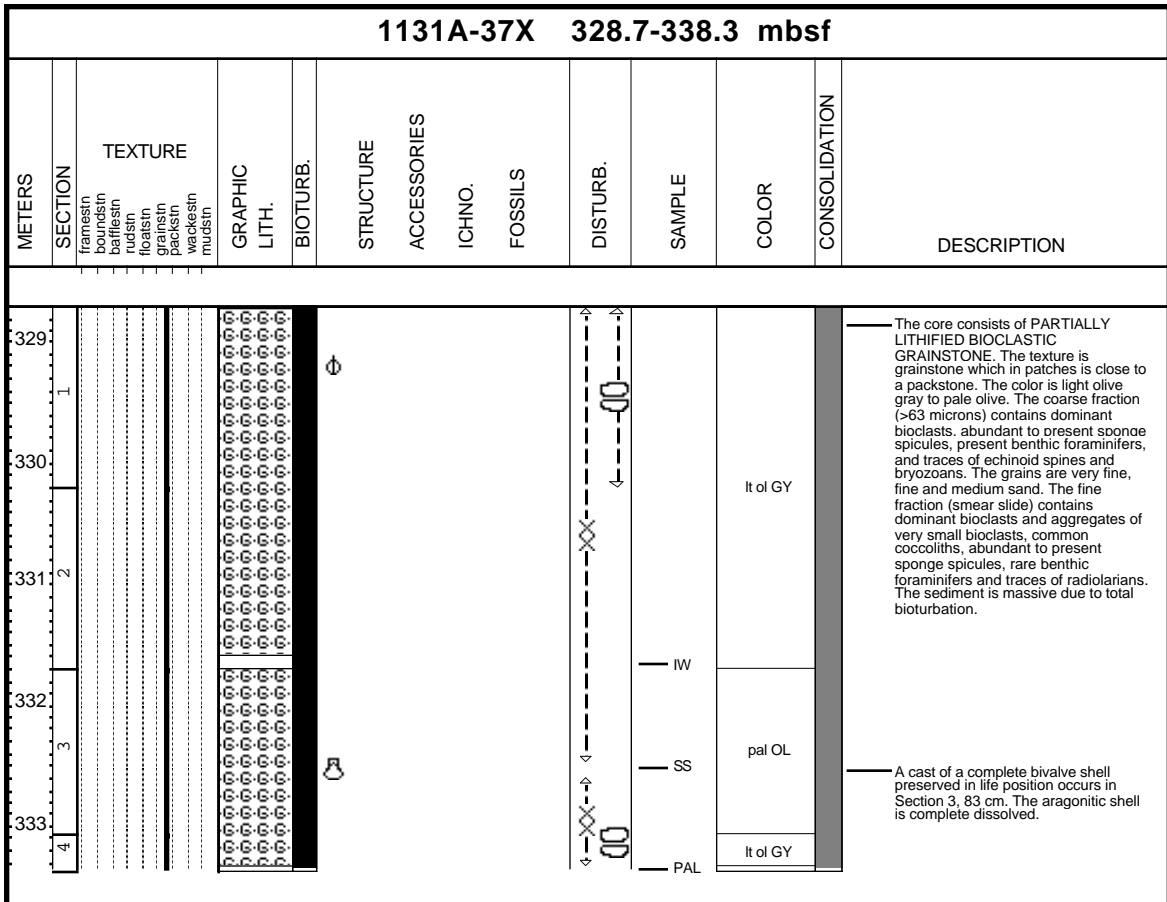
Core Photo



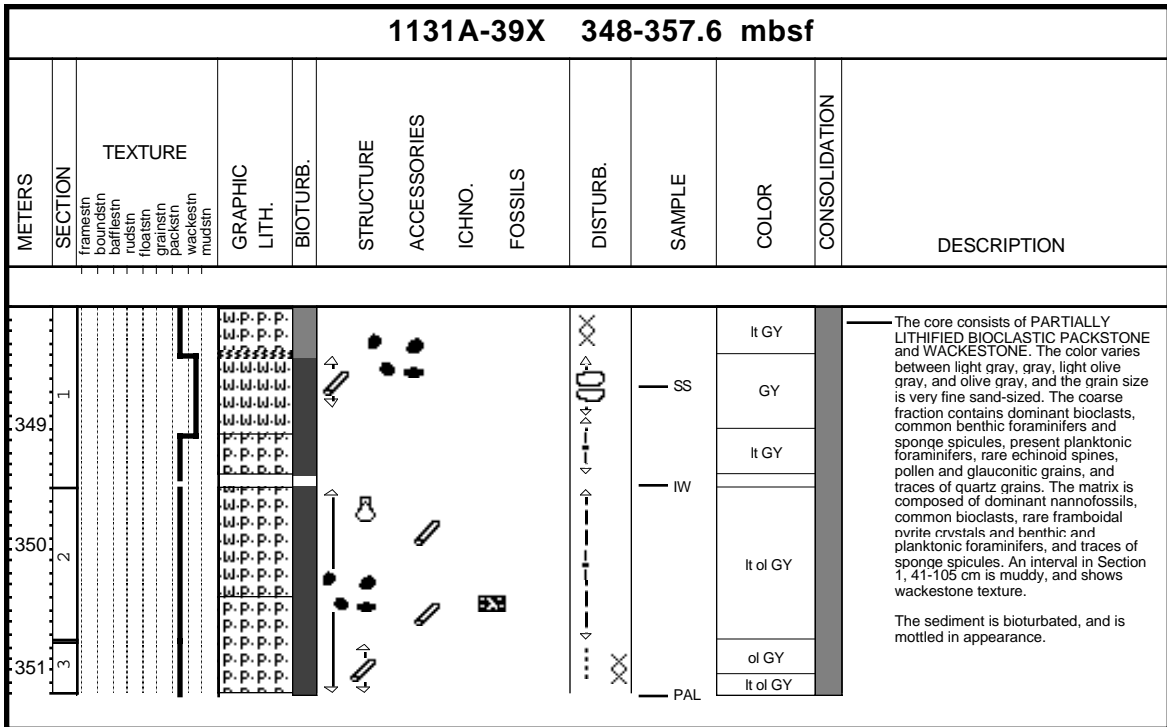
Core Photo



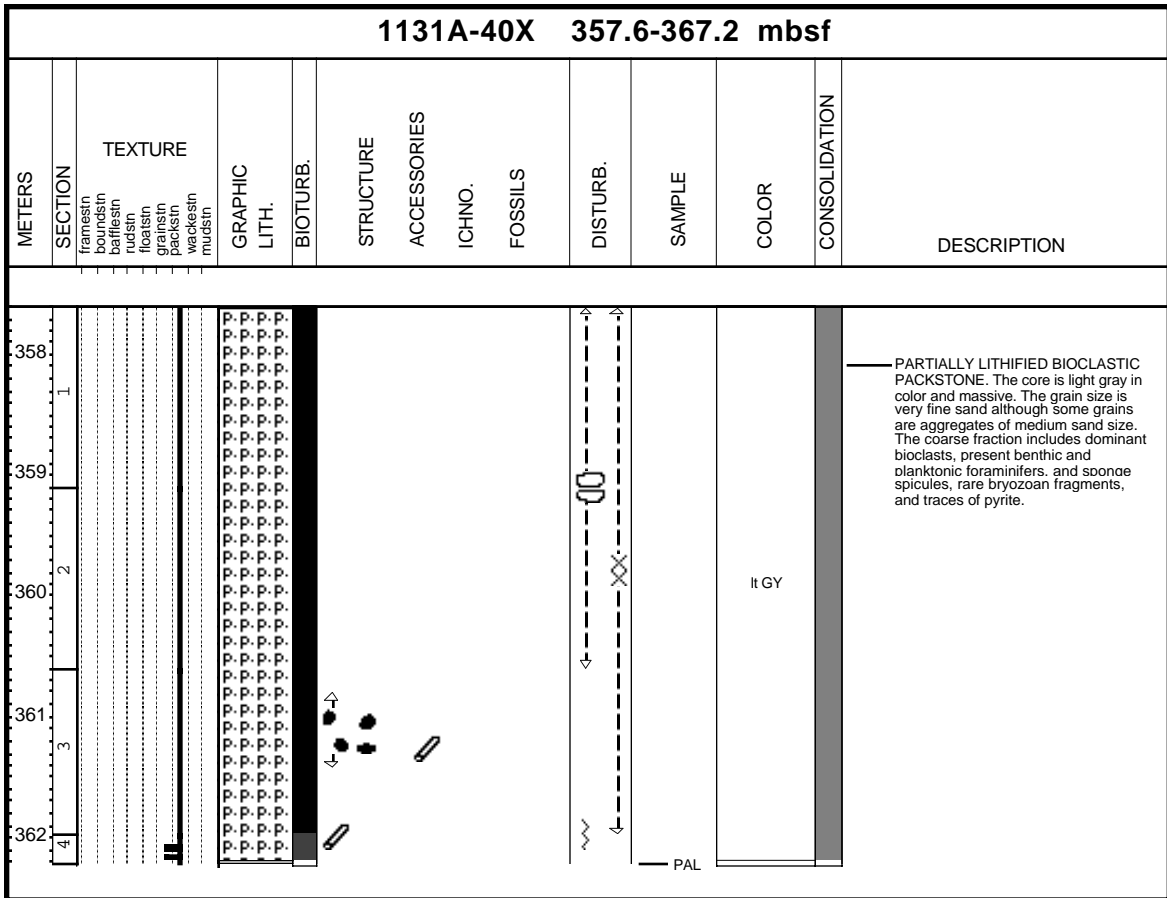
Core Photo



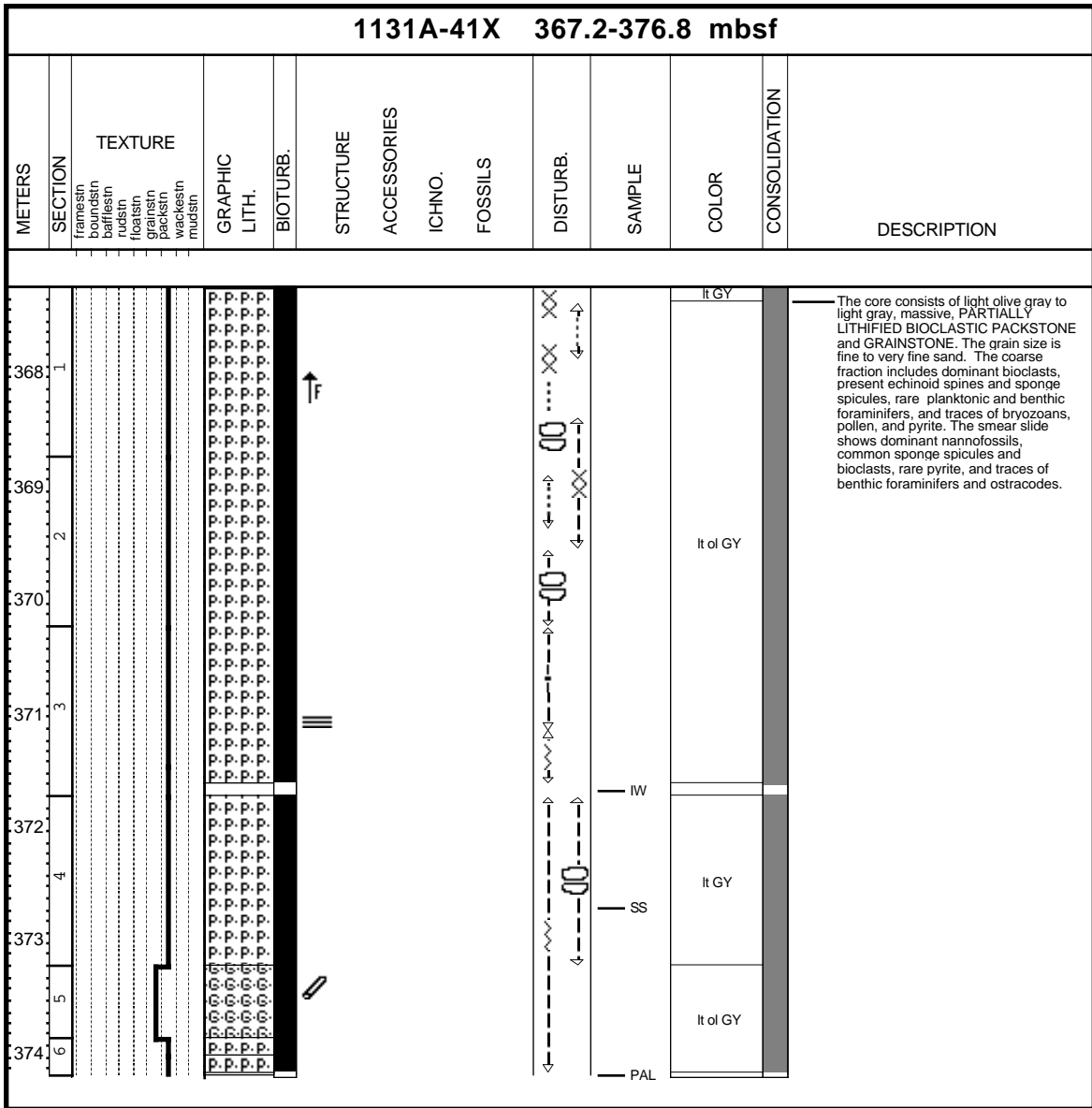
Core Photo



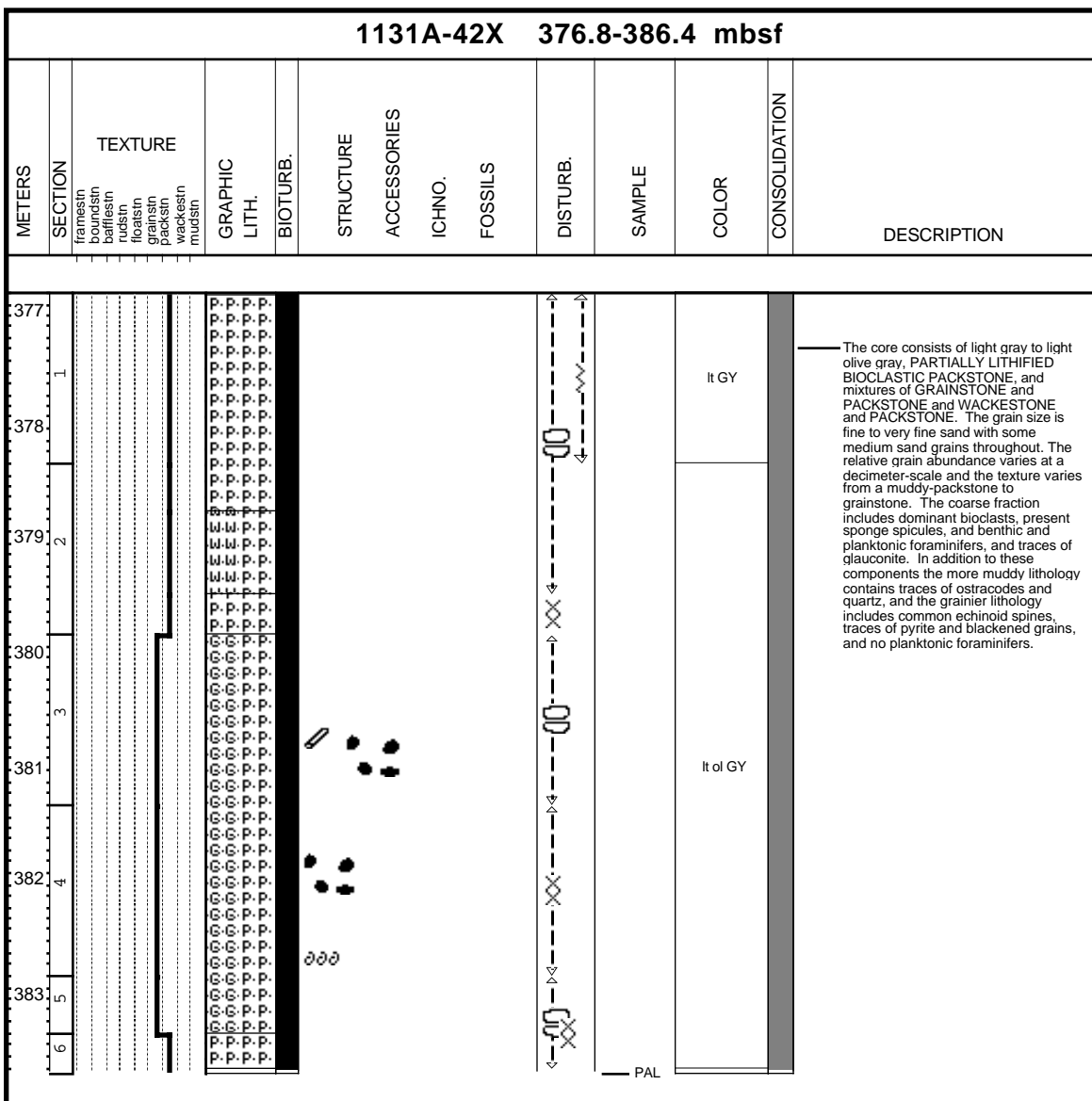
Core Photo



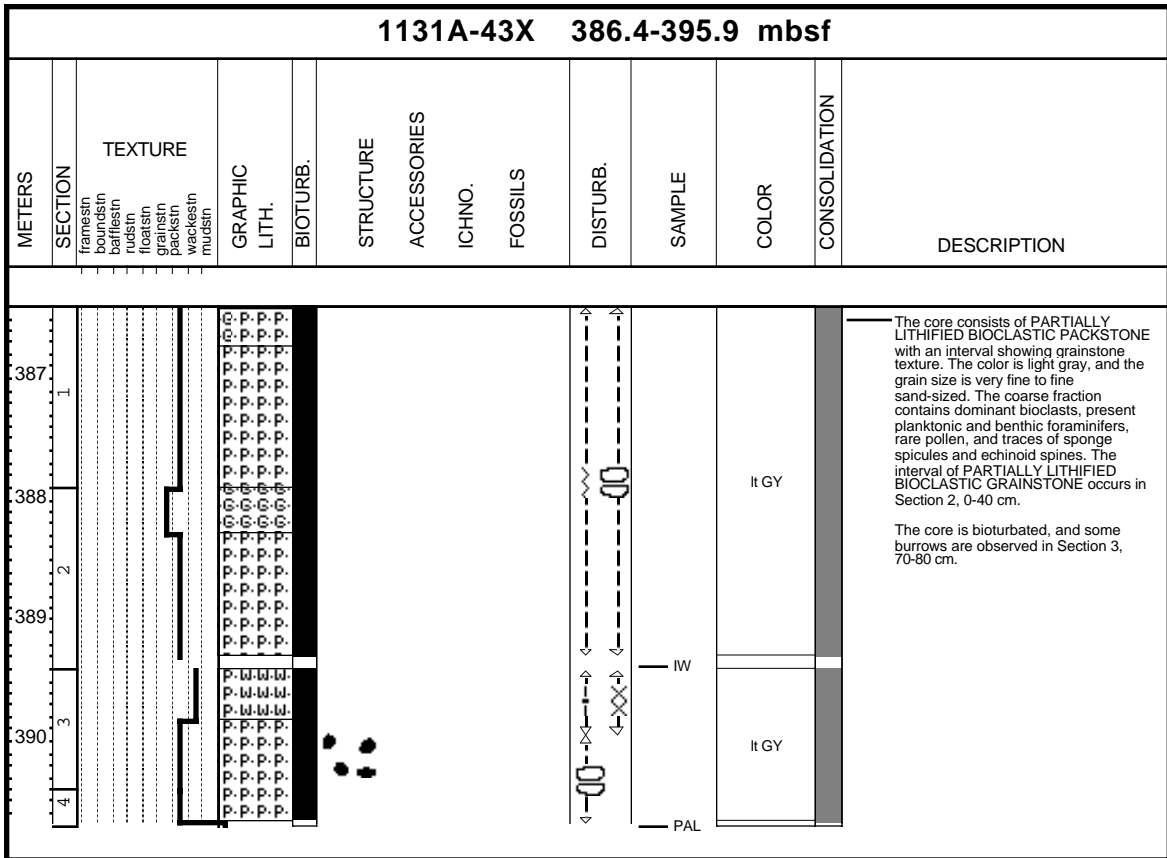
Core Photo



Core Photo



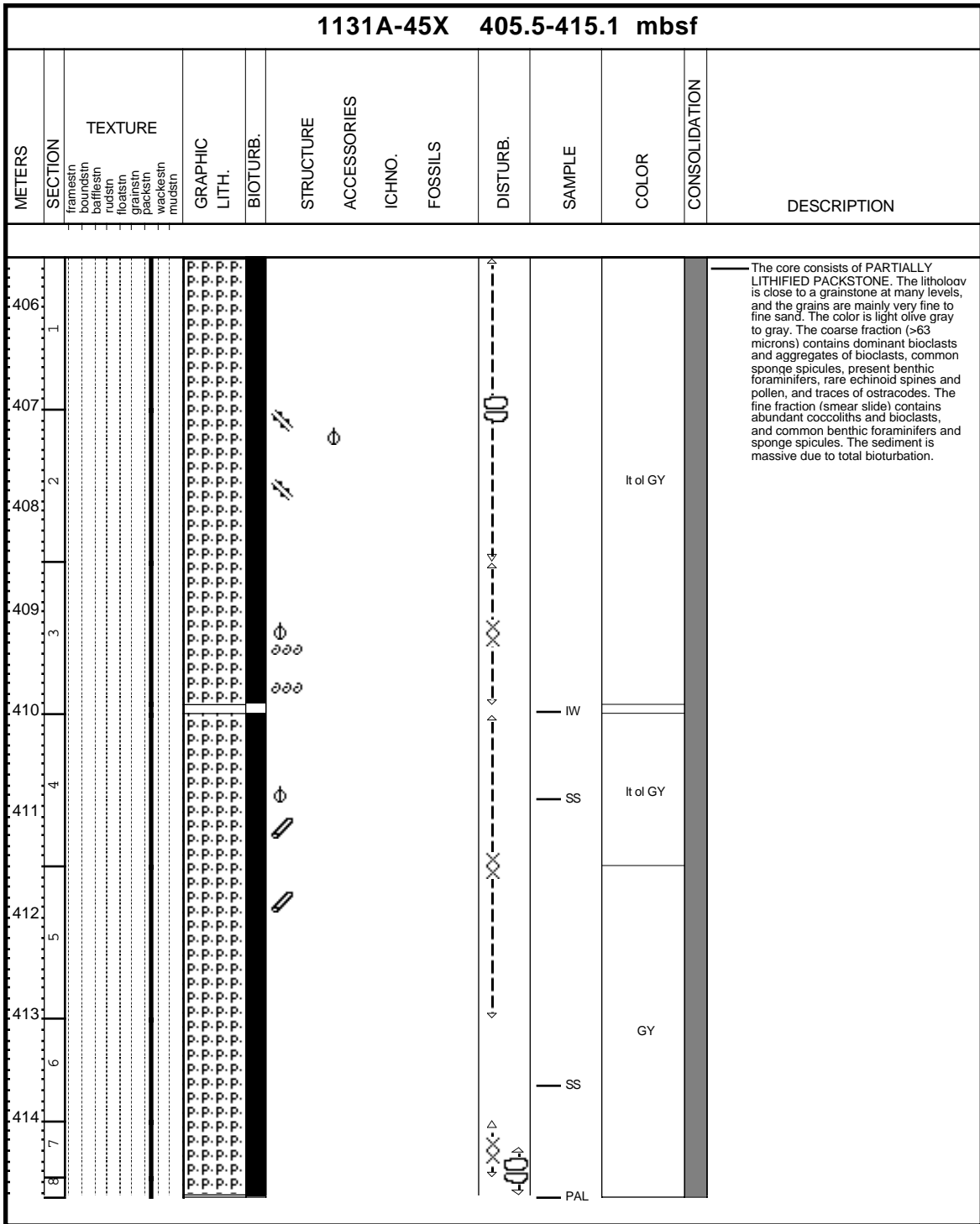
Core Photo



Core Photo

1131A-44X 395.9-405.5 mbsf													
METERS	SECTION	TEXTURE	GRAPHIC LITH.	BIOTURB.	STRUCTURE	ACCESSORIES	ICHNO.	FOSSILS	DISTURB.	SAMPLE	COLOR	CONSOLIDATION	DESCRIPTION
396.1	I	framsin forams buffs rudstn foams grains packstn wackstn mudstn	P.P.P.P.						XX	PAL	lt of GY		The core consists of PARTIALLY LITHIFIED BIOCLASTIC PACKSTONE. The color is light olive gray. The coarse fraction (>63 microns) contains dominant bioclasts and present benthic and planktonic foraminifers. The sediment is heavily bioturbated.

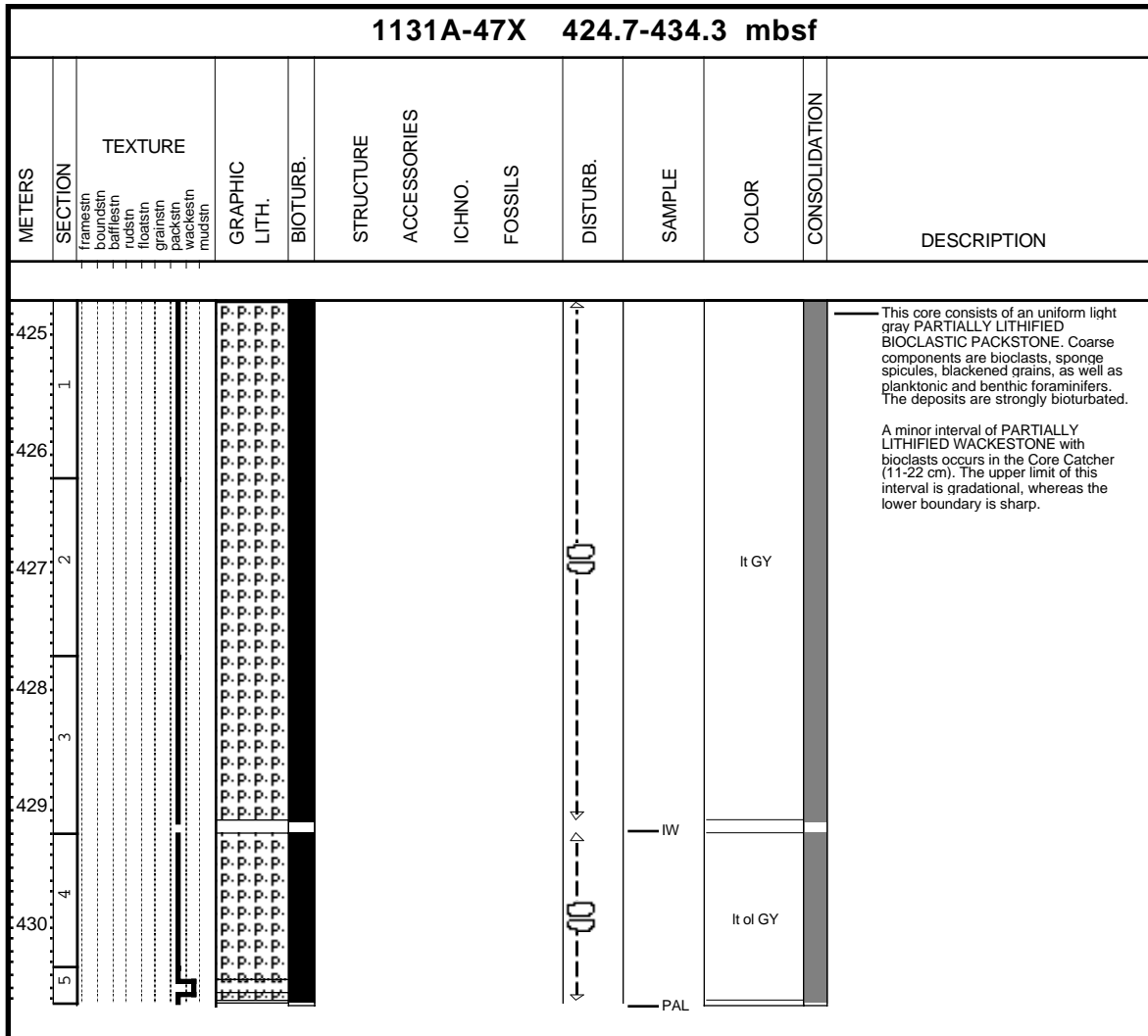
Core Photo



Core Photo

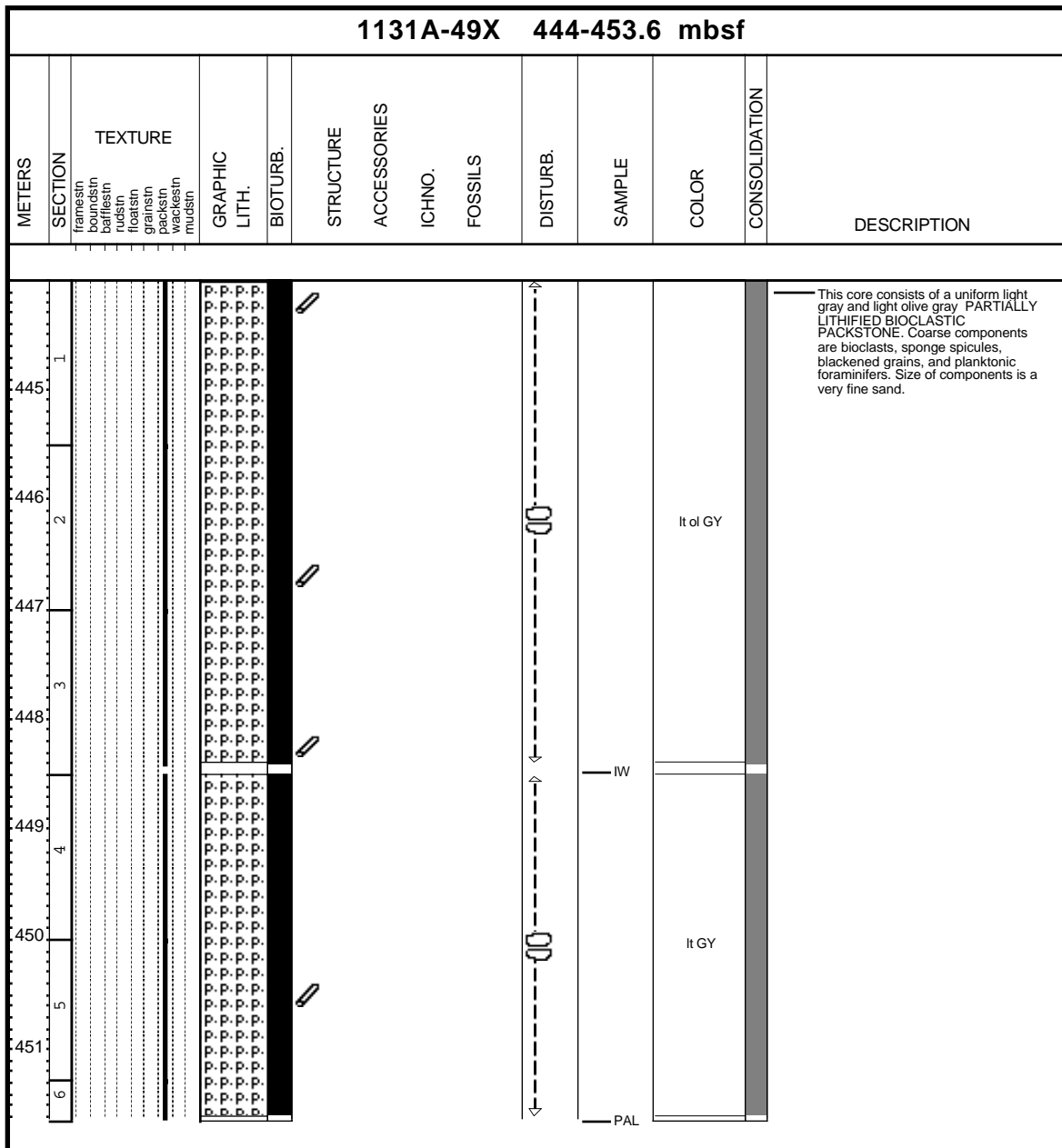
		1131A-46X 415.1-424.7 mbsf															
METERS	SECTION	TEXTURE					GRAPHIC LITH.	BIOTURB.	STRUCTURE	ACCESSORIES	ICHNO.	FOSSILS	DISTURB.	SAMPLE	COLOR	CONSOLIDATION	DESCRIPTION
		framesin	boundstin	balliesin	rudstin	floatstin	spicstin	packstin	vacstin	mudstin							
1																	<p>The core consists of PARTIALLY LITHIFIED BIOCLASTIC PACKSTONE to GRAINSTONE. The grain size is fine to medium sand and the core is bioturbated throughout.</p>

Core Photo

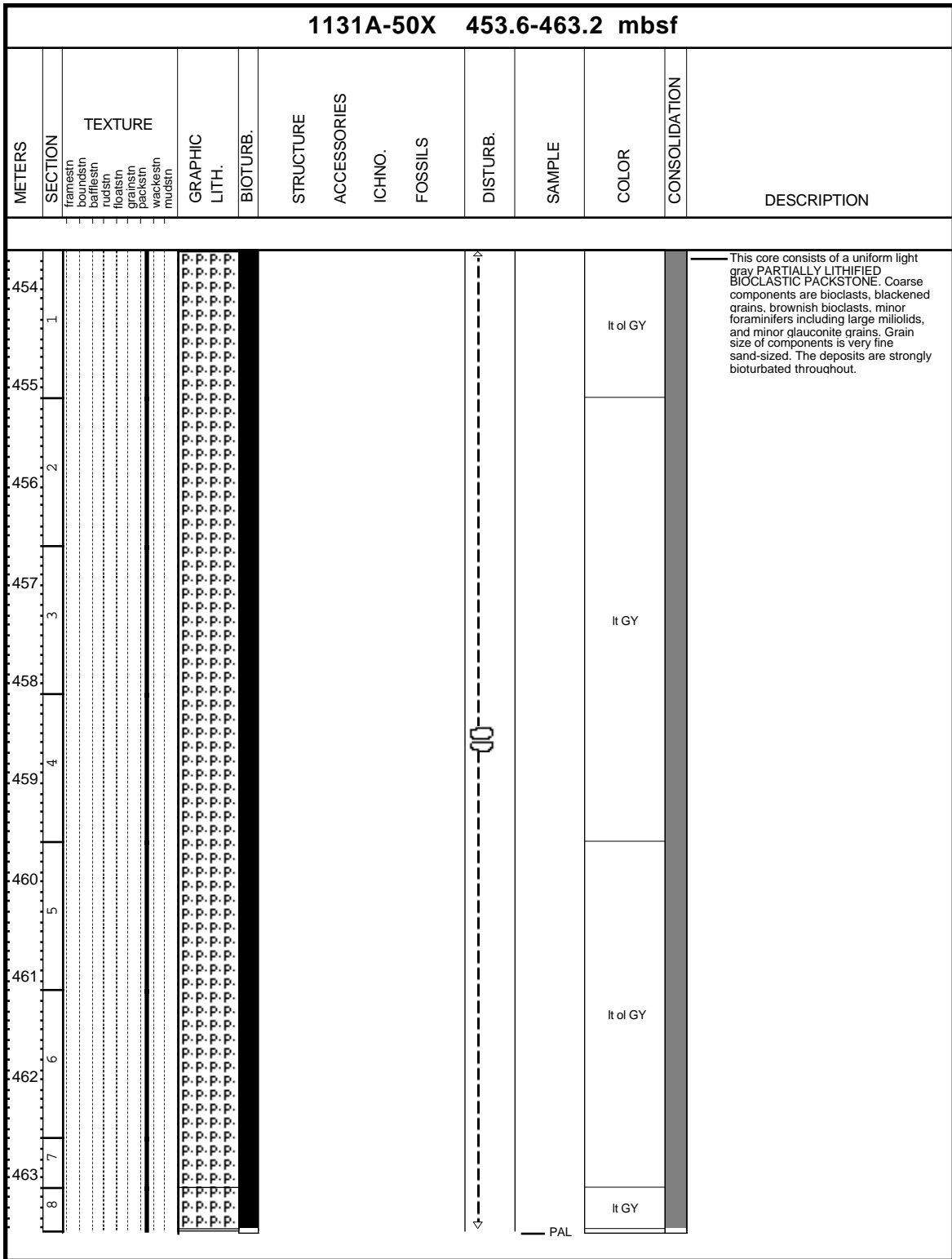


CORE DESCRIPTIONS
VISUAL CORE DESCRIPTIONS, SITE 1131

Core Photo



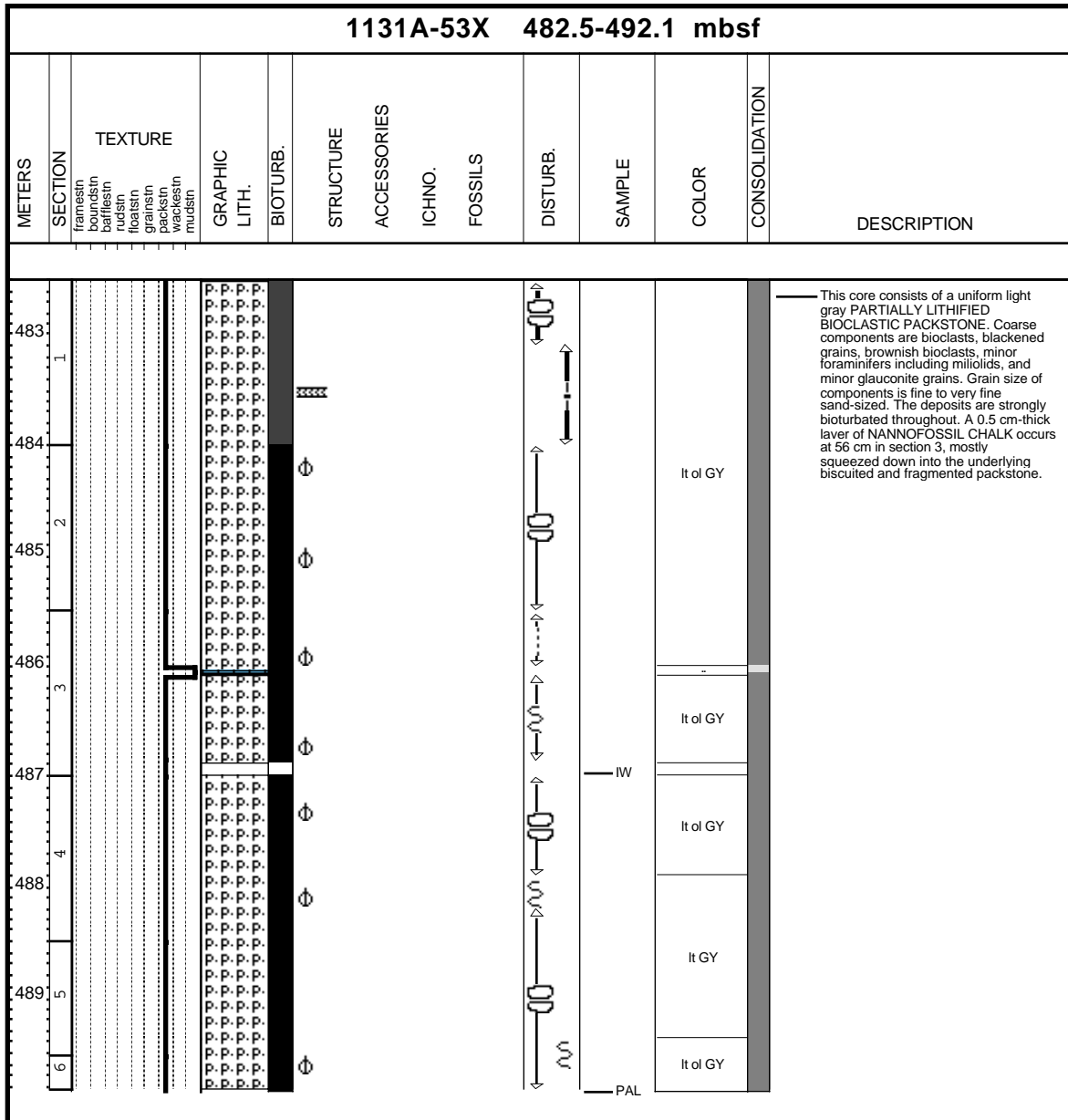
Core Photo



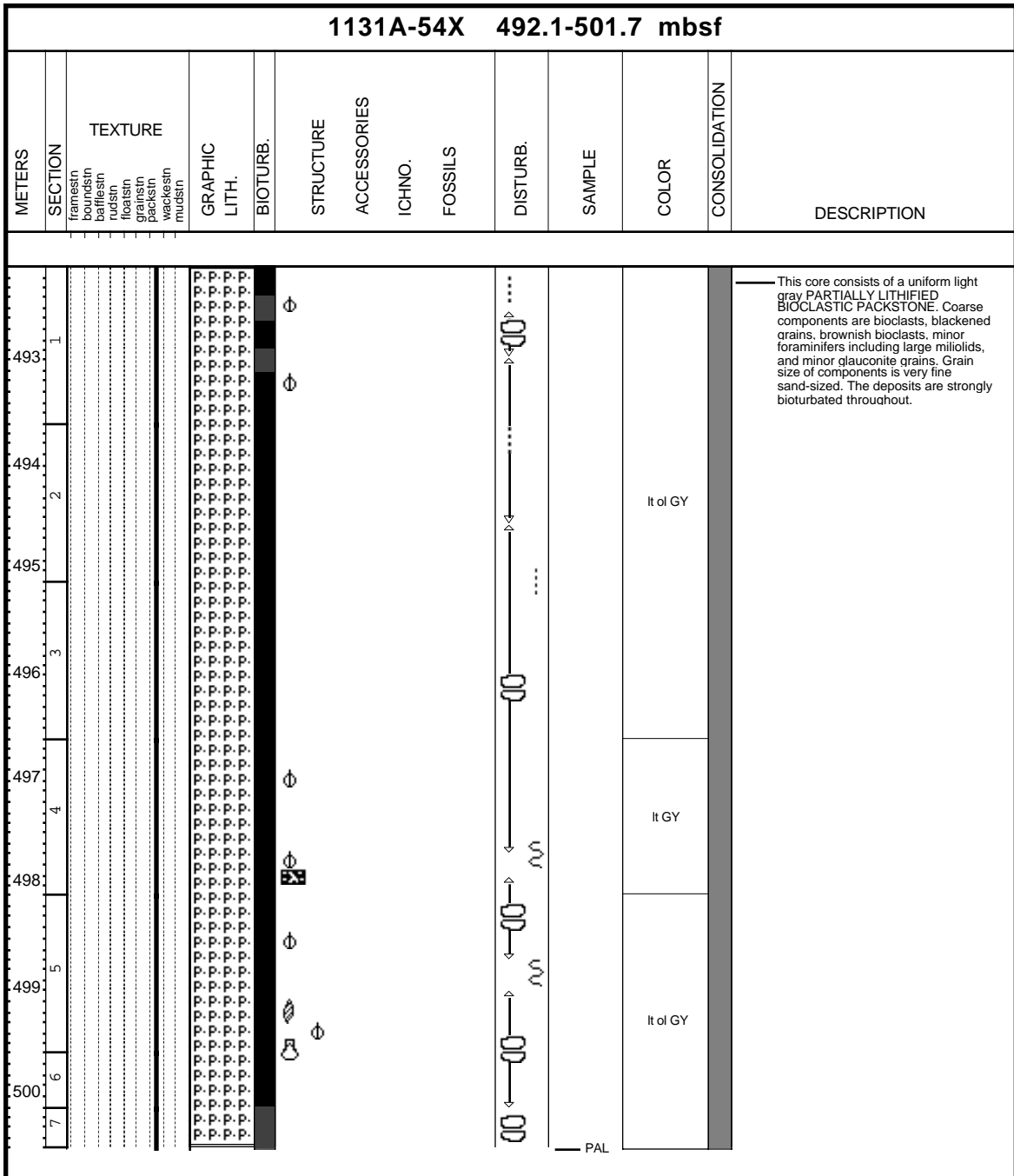
Core Photo

1131A-52X 472.8-482.5 mbsf													
METERS	SECTION	TEXTURE	GRAPHIC LITH.	BIOTURB.	STRUCTURE	ACCESSORIES	ICHNO.	FOSSILS	DISTURB.	SAMPLE	COLOR	CONSOLIDATION	DESCRIPTION
473	1 2	farnesin foramsin buffesin rudsin foramsin grainsin packsin wackesin mudsin											This core consists of a light gray PARTIALLY LITHIFIED BIOCLASTIC PACKSTONE. Major components are bioclasts, blackened grains, and some foraminifers. Grain size of bioclasts is a fine sand.

Core Photo



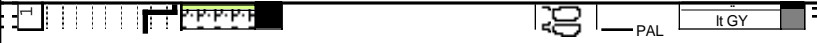
Core Photo



Core Photo

1131A-57X 520.9-530.6 mbsf													
METERS	SECTION	TEXTURE	GRAPHIC LITH.	BIOTURB.	STRUCTURE	ACCESSORIES	ICHNO.	FOSSILS	DISTURB.	SAMPLE	COLOR	CONSOLIDATION	DESCRIPTION
521 1 2 522	framesin foramsin buffesin rudisin foramsin grainsin packsin wackesin muds in												<p>This core consists of a uniform PARTIALLY LITHIFIED BIOCLASTIC PACKSTONE. Coarse components are bioclasts, blackened grains, minor foraminifers including conspicuous miliolid foraminifers, and minor glauconite grains. Grain size of components is silt to very fine sand-sized. The deposits are strongly bioturbated throughout.</p>

Core Photo

1131A-59X 540.2-549.8 mbsf													
METERS	SECTION	TEXTURE	GRAPHIC LITH.	BIOTURB.	STRUCTURE	ACCESSORIES	ICHNO.	FOSSILS	DISTURB.	SAMPLE	COLOR	CONSOLIDATION	DESCRIPTION
													 <p>CHERT. Silicified nanofossil ooze. PARTIALLY LITHIFIED BIOCLASTIC PACKSTONE. The sediment is very fine grained with abundant bioclasts, common planktonic foraminifers and rare sponge spicules.</p>

1131A-60X TO PALEO

1131A-61X NO RECOVERY

1131A-62X TO PALEO

1131A-63X TO PALEO

1131A-64X TO PALEO

Core Photo

1131A-65X 597.6-607.3 mbsf															
METERS	SECTION	framesin boundstrn baflesin rudstrn floatstrn spicstrn wackestrn mudstrn	TEXTURE	GRAPHIC LITH.	BIOTURB.	STRUCTURE	ACCESSORIES	ICHNO.	FOSSILS	DISTURB.	SAMPLE	COLOR	CONSOLIDATION	DESCRIPTION	
															<p>This core consists of a uniform PARTIALLY LITHIFIED BIOCLASTIC GRAINSTONE. Coarse components are bioclasts, blackened grains, foraminifers, and glauconite grains. Grain size of components is very fine sand-sized. The deposits are strongly bioturbated throughout.</p>

Core Photo

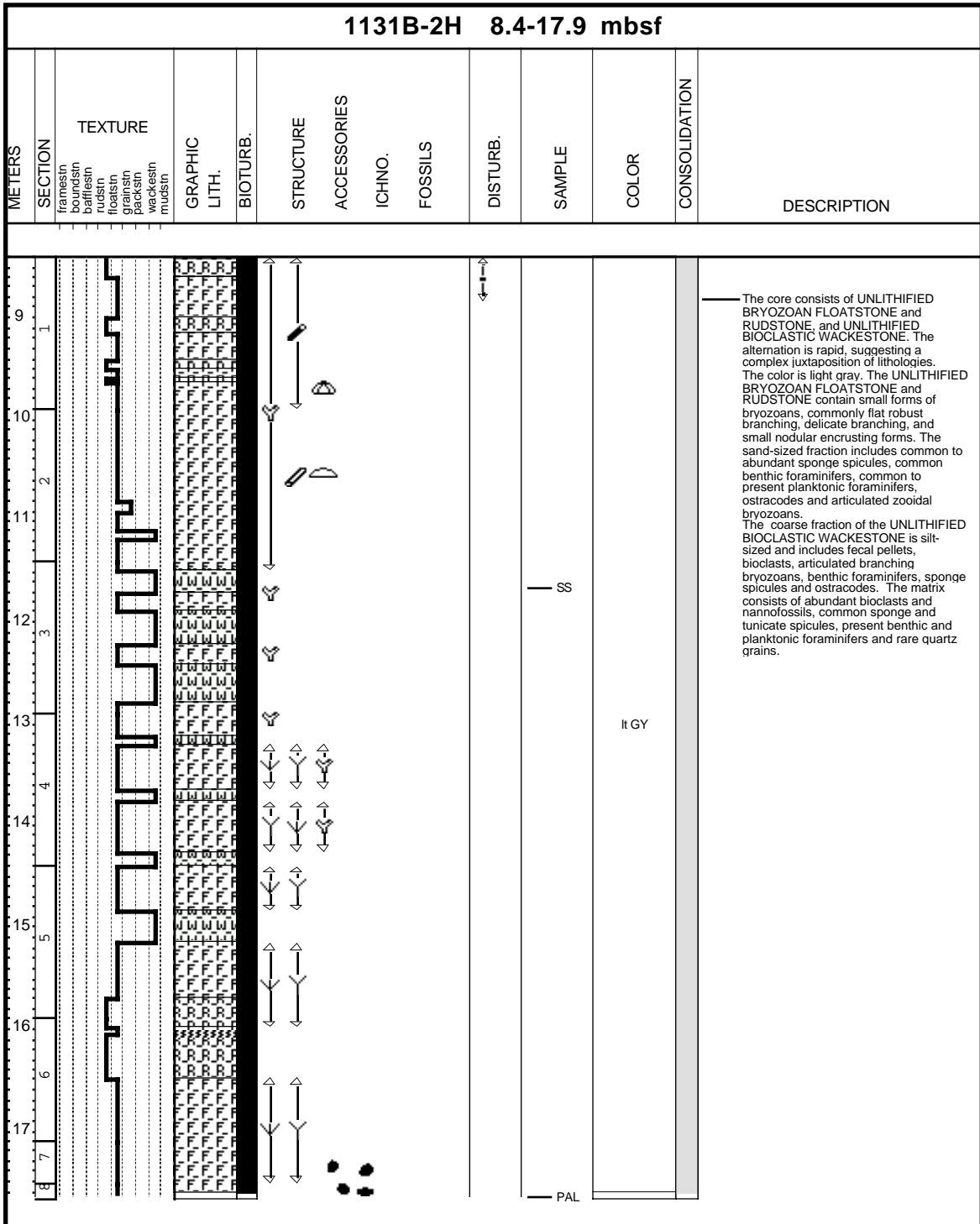
1131A-66X 607.3-616.9 mbsf	
METERS	SECTION
	TEXTURE
	GRAPHIC LITH.
	BIOTURB.
	STRUCTURE
	ACCESSORIES
	ICHNO.
	FOSSILS
	DISTURB.
	SAMPLE
	COLOR
	CONSOLIDATION
	DESCRIPTION

N

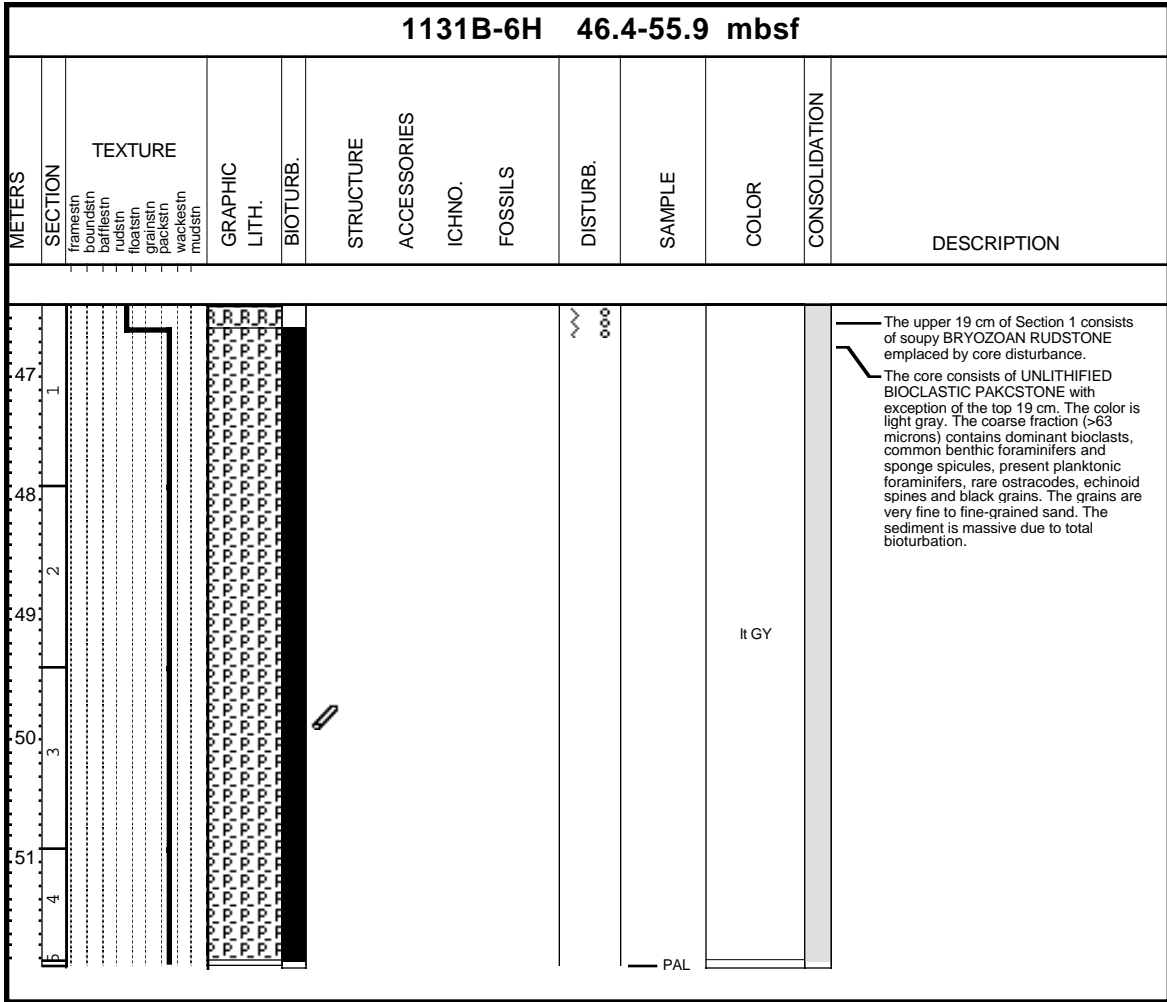
PAL

This core consists of a uniform PARTIALLY LITHIFIED BIOCLASTIC GRAINSTONE. Coarse components are bioclasts, blackened grains and glauconite grains. Grain size of components is fine sand-sized. The deposits are strongly bioturbated throughout.

Core Photo



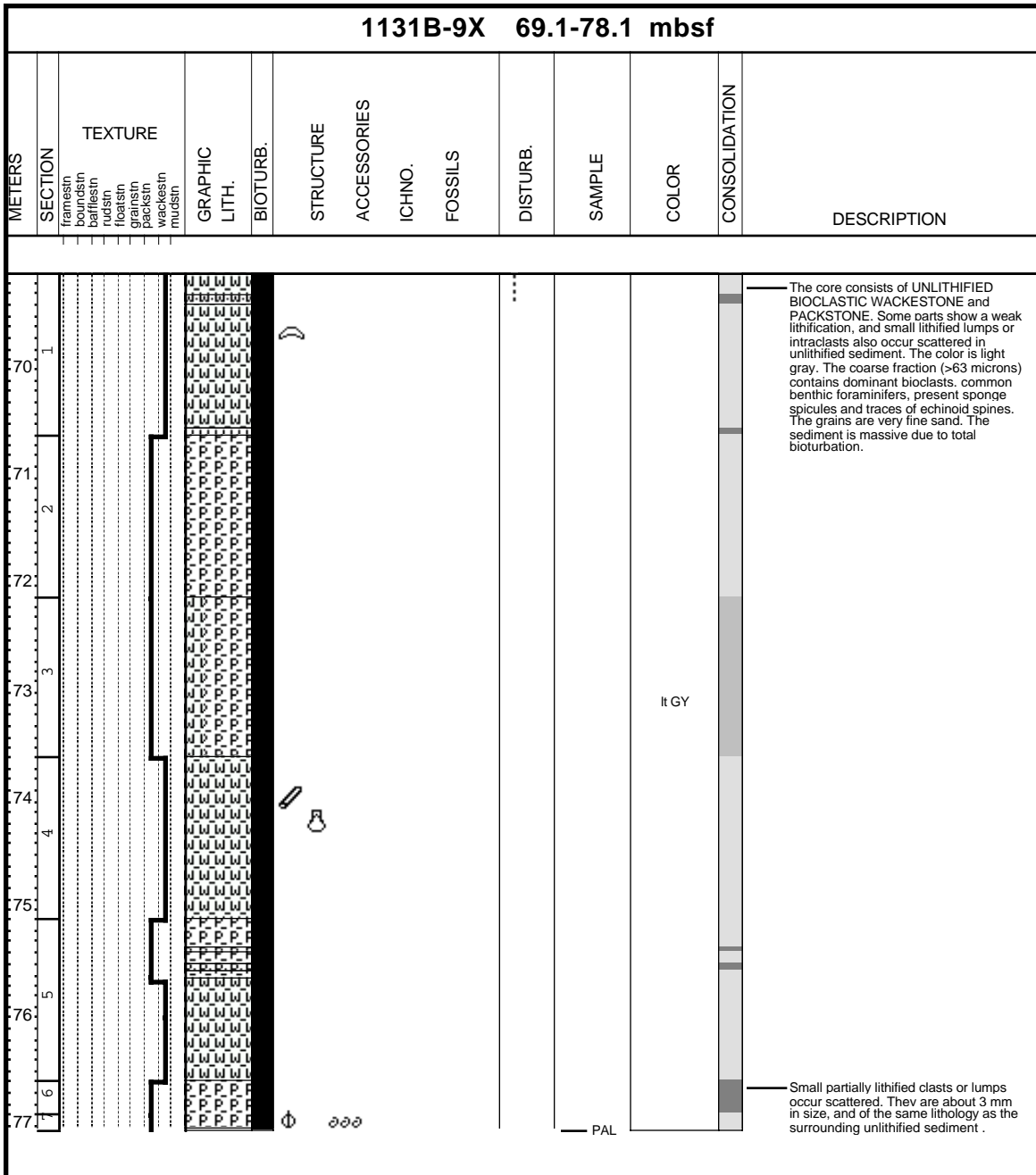
Core Photo



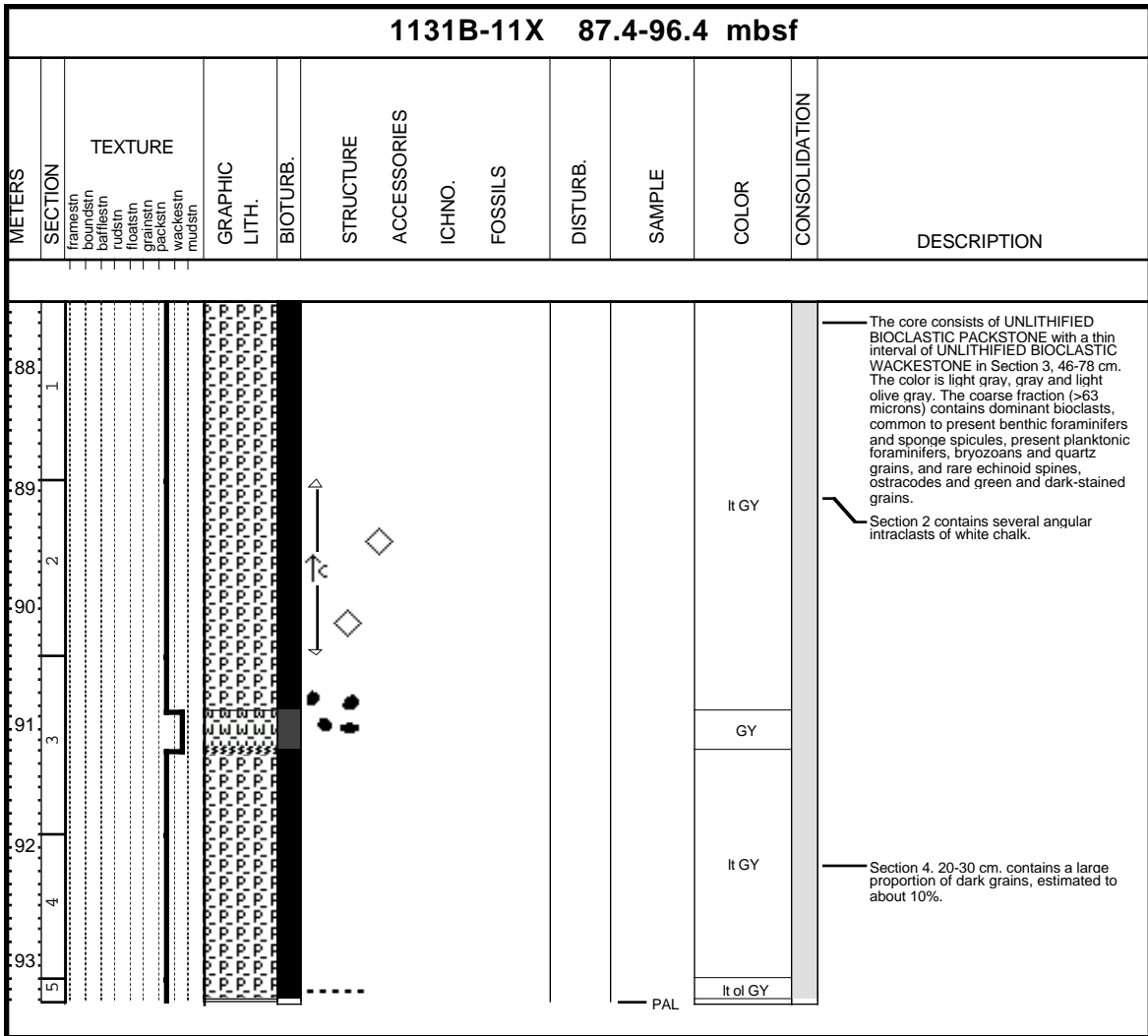
Core Photo

1131B-8X 65.4-69.1 mbsf													
METERS	SECTION	TEXTURE	GRAPHIC LITH.	BIOTURB.	STRUCTURE	ACCESSORIES	ICHNO.	FOSSILS	DISTURB.	SAMPLE	COLOR	CONSOLIDATION	DESCRIPTION
66	1												<p>The core consists of UNLITHIFIED BIOCLASTIC PACKSTONE. The color is light gray. The coarse fraction (>63 microns) contains dominant bioclasts, common to present benthic foraminifers and sponge spicules, present to rare planktonic foraminifers and ostracodes, and traces of tunicate spicules, echinoid spines and black grains. The grains are very fine to fine sand.</p> <p>Small lithified intraclasts, 2-3 mm in diameter, of the same composition as the main lithology are scattered throughout.</p>
67	2												
68	3												
69	4												
											lt GY		
										PAL			

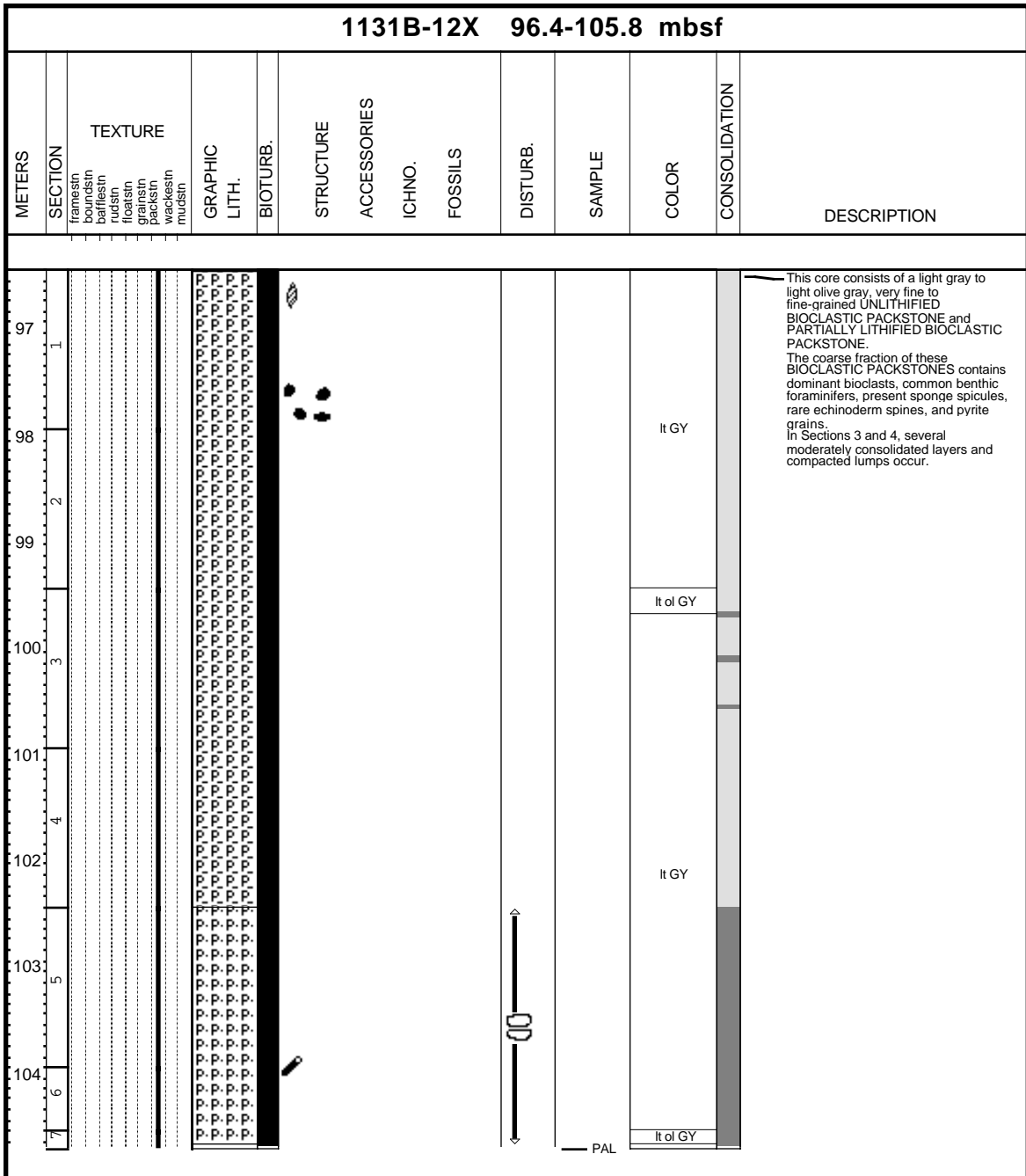
Core Photo



Core Photo



Core Photo



Sample							Lithology	Texture			Mineral							Biogenic										Rock		Comments				
Leg	Site	Hole	Core	Type	Section	Top (cm)		Depth (mbsf)	Sand	Silt	Clay	Calcite	Clay	Dolomite	Fe Oxide	Glaucanite	Opaques	Phosphorite	Pyrite	Quartz	Benthic Foraminifers	Bivalves	Bryozoa	Coccolith	Diatoms	Echinoid Spines	Ostracod	Planktonic Foraminifers	Pollen		Radiolarians	Silicoflagellates	Sponge Spicules	Tunicate
182	1131	A	1	H	2	70	2.20													C		A				C				C	P	A		
182	1131	A	4	H	1	87	23.27													P		C				*				P	P			P
182	1131	A	4	H	6	90	30.80				C	P	*							P		A				P		*		C	C	C		P
182	1131	A	6	H	7	60	51.00													C		C		R		C				P	R	A		Abundant blackened grains; rare serpulids
182	1131	A	11	X	2	113	88.03													C		C		R		P			A	R	C			
182	1131	A	12	X	4	72	100.22													P		D				P			C	R	C			
182	1131	A	13	X	4	70	109.80															D							P	P				
182	1131	A	15	X	1	60	123.20						*							C		A					*		C	P	C			
182	1131	A	15	X	4	60	127.70															D				P			A		C			
182	1131	A	17	X	1	80	142.10													P		C							A	P	C			
182	1131	A	19	X	1	80	160.80															D							D		A			
182	1131	A	34	X	2	54	301.94													P		C					R	R	A	*	C			Pollen-rare; Pteropods-trace
182	1131	A	37	X	3	80	332.50													R		C					*		P		D			
182	1131	A	39	X	1	64	348.64											R		R		D				R	*		*		C		C	
182	1131	A	41	X	4	97	372.67											R		*		D		*					C		C			
182	1131	A	45	X	4	80	410.80													C		A							C		A			
182	1131	A	45	X	6	64	413.64													C		A							P		A			
182	1131	B	2	H	3	24	11.64											R		C		A		*		P			C	C	A			
182	1131	B	4	H	5	120	34.60						*							C		A			*				C	R	A			