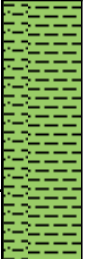
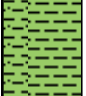






Core Photo

1166A-1R 0-10.4 mbsf							
METERS	SECTION	GRAPHIC LITH.	BIOTURB.	STRUCTURE	DISTURB.	SAMPLE	DESCRIPTION
1						SS	<p>SANDY SILTY CLAY and DIAMICTON</p> <p>Sections 1 and 2 are composed of homogeneous, poorly sorted SANDY SILTY CLAY with scattered limestones, of both igneous and metamorphic origin, up to 4 cm in diameter. Section 3, 0-17 cm, is structureless clast-poor massive DIAMICTON.</p>
2						SS	
3						SS	


Core Photo

1166A-2R 10.4-19.8 mbsf							
METERS	SECTION	GRAPHIC LITH.	BIOTURB.	STRUCTURE	DISTURB.	SAMPLE	DESCRIPTION
1							<p>PEBBLES AND COBBLES</p> <p>Only 7 loose PEBBLES and COBBLES were recovered in this core. Most are granite and dolerite. No sediment was recovered and the pebbles may have fallen downhole during drilling.</p>

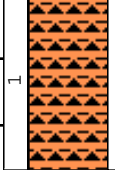
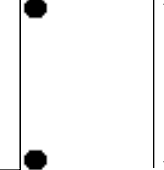
Core Photo

1166A-3R 19.8-29.2 mbsf							
METERS	SECTION	GRAPHIC LITH.	BIOTURB.	STRUCTURE	DISTURB.	SAMPLE	DESCRIPTION
1 1							<p>DIAMICTON</p> <p>This core is massive clast-rich DIAMICTON with a matrix of silty and clayey sand. Coal granules occur in Section 1, 87 cm. Section 1, 0-31 cm is a diorite (granodiorite?) boulder. There is a garnet-bearing quartzite pebble (2 x 3 cm) in Section 1, 100 cm. Section 2 is only loose pebbles, which include diorite, gneiss and granodiorite, and are up to 5 cm in diameter. No sediment occurs with the pebbles, so they may have fallen downhole during drilling.</p>


Core Photo

1166A-4R 29.2-38.2 mbsf							
METERS	SECTION	GRAPHIC LITH.	BIOTURB.	STRUCTURE	DISTURB.	SAMPLE	DESCRIPTION
							<p>PEBBLES</p> <p>Core consists of 2 pebbles; each is 4 cm in diameter. One is gneiss and the other is dolerite. These pebbles may have fallen downhole during drilling.</p>


Core Photo

1166A-5R 38.2-47.3 mbsf							
METERS	SECTION	GRAPHIC LITH.	BIOTURB.	STRUCTURE	DISTURB.	SAMPLE	DESCRIPTION
1 -1							<p>DIAMICTON</p> <p>This core is massive clast-rich DIAMICTON with a matrix of silty and clayey sand. There is a quartzite pebble (2 x 2 cm) at 57 cm and scattered igneous and metamorphic pebble-sized limestones are observed throughout. Section 1, 0-9 cm contains 2 large (up to 6 cm diameter) dark igneous limestones. Section 1, 126-135 cm contains 4 large limestones (up to 7 cm in diameter), which are granites and quartzites.</p>

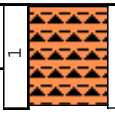
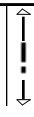
Core Photo

1166A-6R 47.3-56.4 mbsf							
METERS	SECTION	GRAPHIC LITH.	BIOTURB.	STRUCTURE	DISTURB.	SAMPLE	DESCRIPTION
						SS	PEBBLES
							This core consists of 3 loose PEBBLES of metamorphic rock up to 3 cm in diameter.

Core Photo

1166A-7R 56.4-65.4 mbsf						
METERS	SECTION	GRAPHIC LITH.	BIOTURB.	STRUCTURE	DISTURB.	SAMPLE
						DESCRIPTION
						PEBBLES
<p>This core contains 5 loose PEBBLES up to 5 cm in diameter. These pebbles are garnet-bearing quartzite, igneous, dark metamorphic and dolerite rocks. No sediment was recovered.</p>						



Core Photo

1166A-8R 65.4-75 mbsf							
METERS	SECTION	GRAPHIC LITH.	BIOTURB.	STRUCTURE	DISTURB.	SAMPLE	DESCRIPTION
						IW	<p>DIAMICTON</p> <p>This core consists of dark gray, massive, clast-rich DIAMICTON with a matrix of silty and clayey sand. Granule and pebble-sized clasts are dispersed through the length of the core and appear to be igneous and metamorphic in origin. Section 1, 85-93 cm, contains 1 large (up to 8 cm diameter) dark metamorphic limestone.</p>


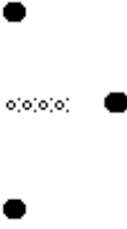
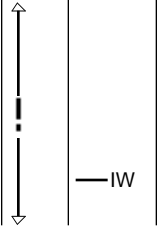
Core Photo

1166A-9R 75-84.4 mbsf							
METERS	SECTION	GRAPHIC LITH.	BIOTURB.	STRUCTURE	DISTURB.	SAMPLE	DESCRIPTION
1 -1						IW	<p>DIAMICTON</p> <p>This core consists of dark gray, massive, clast-rich DIAMICTON with a matrix of silty and clayey sand. Granule and pebble-sized clasts are dispersed through the length of the core and appear to be igneous and metamorphic in origin. Section 1, 0-6 cm, contains one large dark colored dolerite lonestone (up to 6 cm diameter). In Section 1, 68-74 cm, a 2 cm clast of reddish diorite and a 1 cm clast of garnet gneiss occur. In Section 2, 0-6 cm, two lonestones (2x4 cm garnet gneiss, 1 cm-scale quartz diorite) and 16-19 cm, one biotite gneiss (2x4 cm) are present.</p>

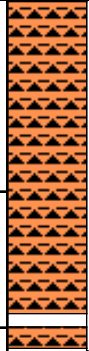
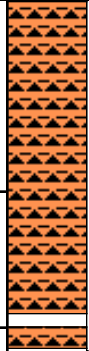


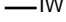
Core Photo

1166A-10R 84.4-94 mbsf							
METERS	SECTION	GRAPHIC LITH.	BIOTURB.	STRUCTURE	DISTURB.	SAMPLE	DESCRIPTION
	1					IW	<p>DIAMICTON</p> <p>This core consists of dark gray, massive, clast-rich DIAMICTON with a matrix of silty and clayey sand. Granule and pebble-sized clasts are dispersed through the length of the core and appear to be igneous and metamorphic in origin. Section 1, 0-5 cm, contains 3 loose limestones; 2 are dark colored dolerite. Section 1, 29-30 cm, contains a 2x3 cm clast of dark hornblende gneiss and Section 1, 35-39 cm contains a 3x4 cm gneiss clast.</p>

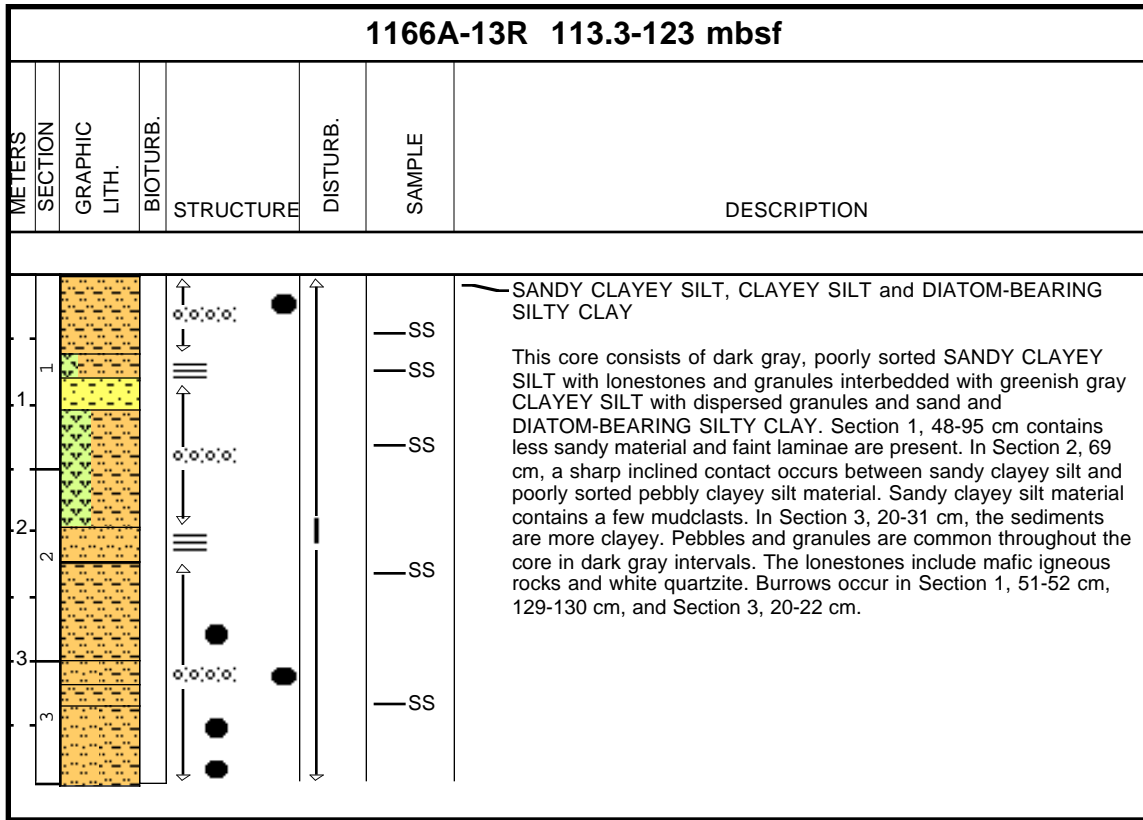
Core Photo

1166A-11R 94-103.7 mbsf							
METERS	SECTION	GRAPHIC LITH.	BIOTURB.	STRUCTURE	DISTURB.	SAMPLE	DESCRIPTION
1 1 1							<p>DIAMICTON</p> <p>This core consists of dark gray, massive, clast-rich DIAMICTON with a matrix of sandy, clayey silt. Granule and pebble-sized clasts are dispersed throughout the length of the core and appear to be igneous and metamorphic in origin. Thin sand and granule-rich layers are present in Section 1, 71-72 cm, 79-80 cm, and 82-84 cm. Section 1, 2-6 cm, contains a 2x6 cm gneiss pebble, 74-75 cm, shows a cm-scale coal clast, and Section 2, 20-24 cm, an isolated grayish granite clast. In Section 1, 49-50 cm, a calcareous shell fragment is present.</p>

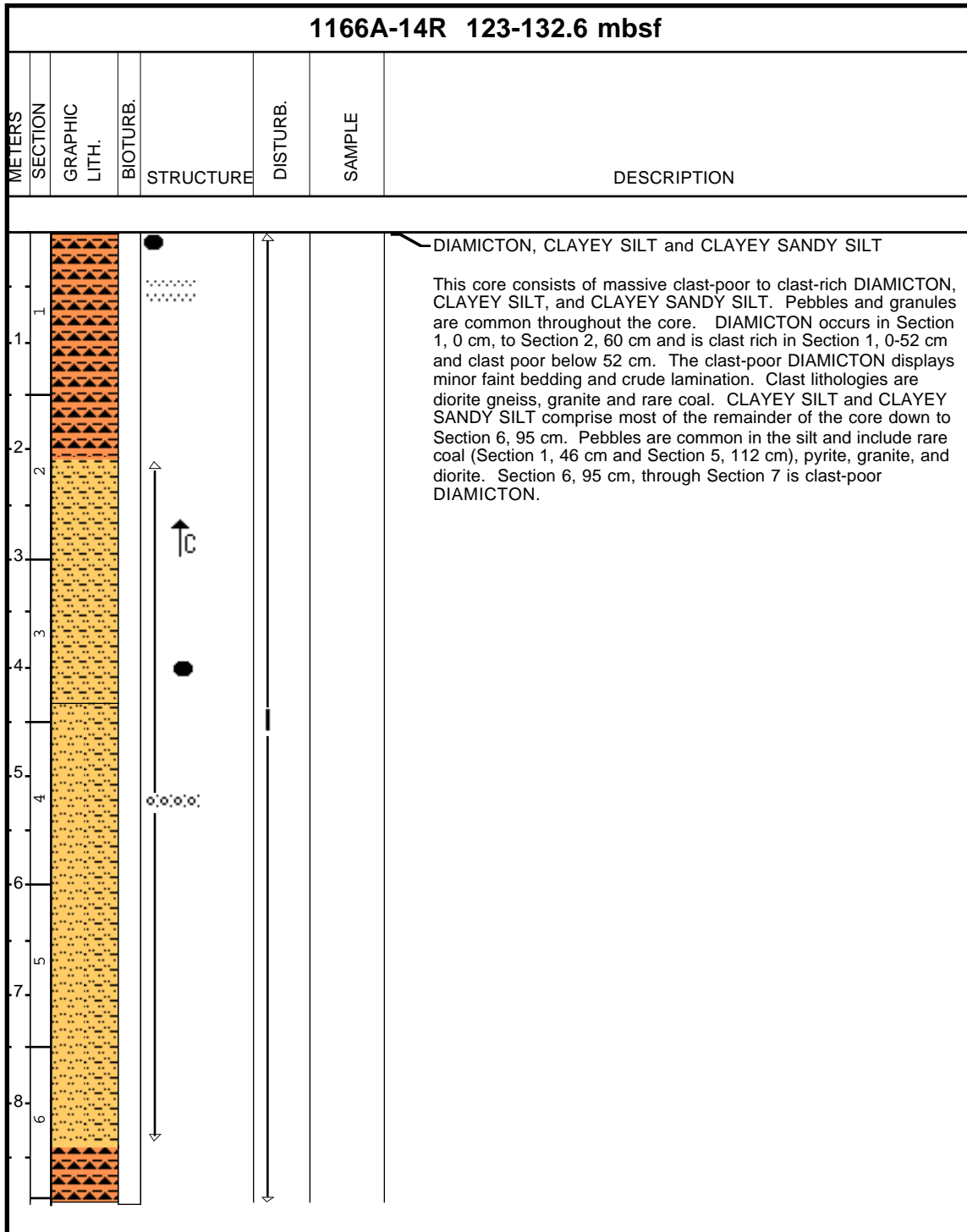
Core Photo

1166A-12R 103.7-113.3 mbsf							
METERS	SECTION	GRAPHIC LITH.	BIOTURB.	STRUCTURE	DISTURB.	SAMPLE	DESCRIPTION
1							<p>DIAMICTON</p> <p>This core consists of dark gray, massive, clast-poor DIAMICTON with a matrix of clayey silt. Granule- and pebble-sized clasts (up to 4 cm diameter) are dispersed throughout the length of the core and are predominantly igneous and metamorphic. Section 1, 59 cm, contains a 1 cm piece of coal.</p>
2							

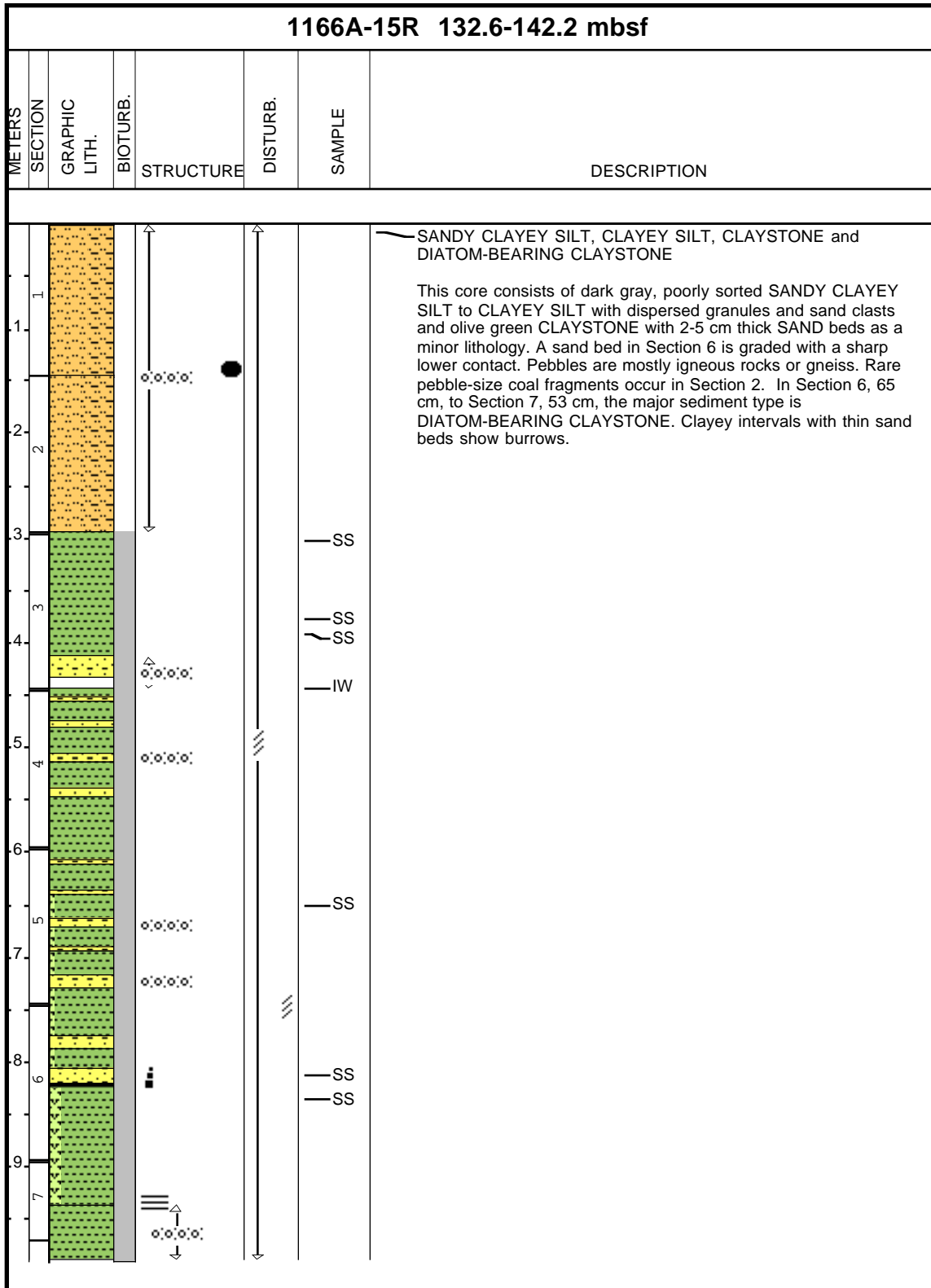
Core Photo



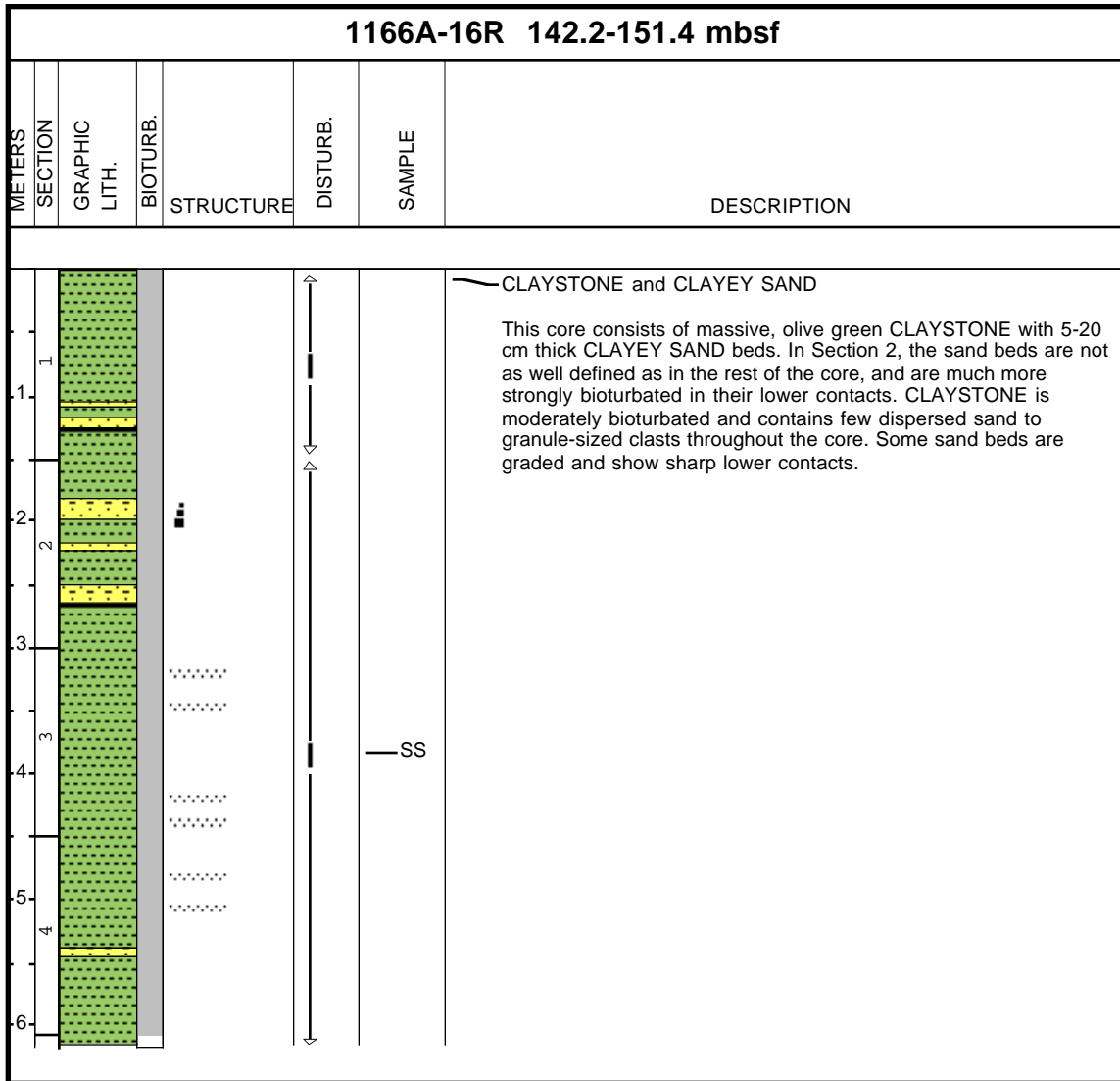
Core Photo



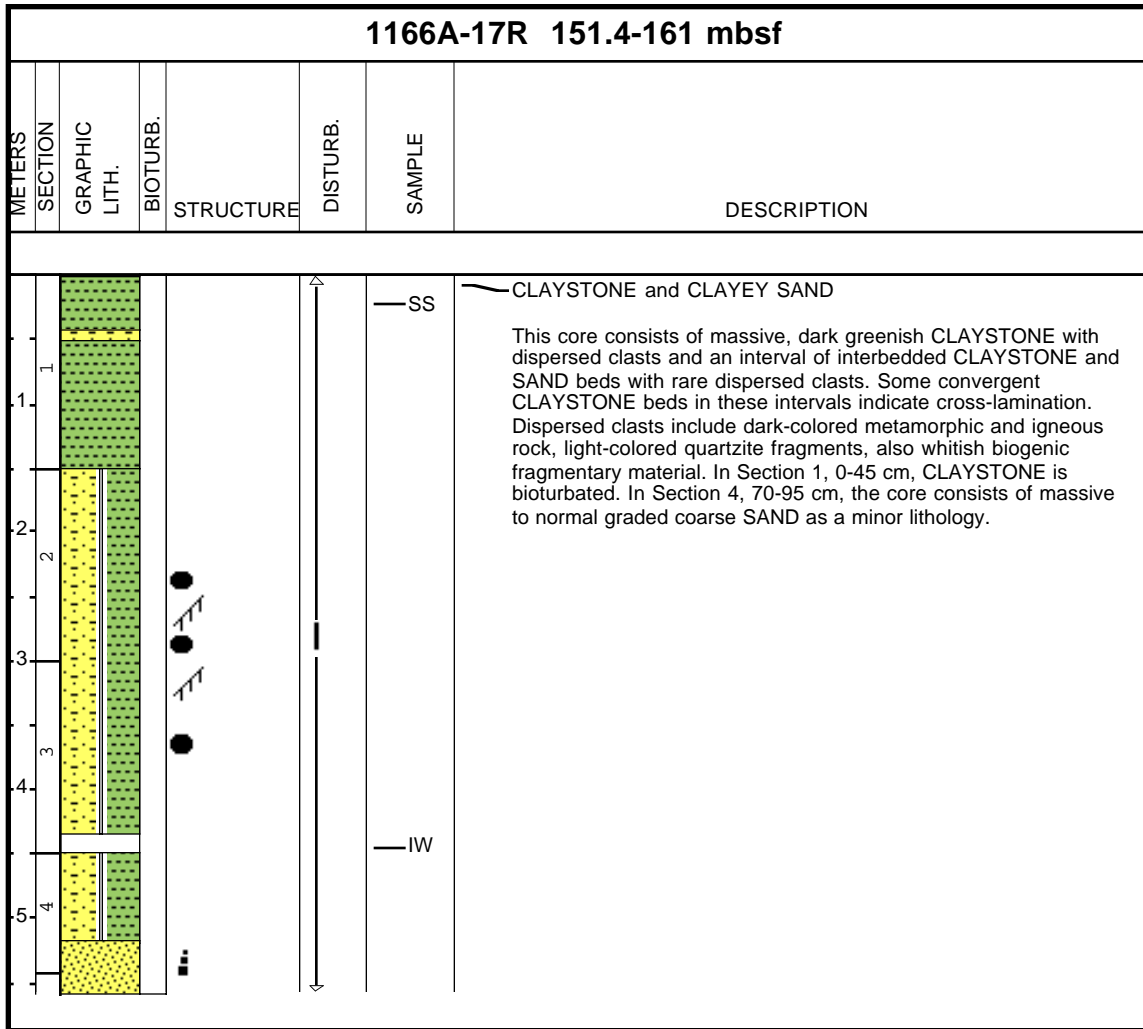
Core Photo



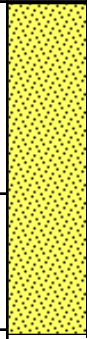

Core Photo




Core Photo




Core Photo

1166A-18R 161-170.6 mbsf							
METERS	SECTION	GRAPHIC LITH.	BIOTURB.	STRUCTURE	DISTURB.	SAMPLE	DESCRIPTION
1 1 2							<p>SAND and SANDSTONE</p> <p>This core is massive, coarse gray SAND from Section 1, 0 cm, to Section 2, 66 cm. The rest of the core is massive, coarse gray SANDSTONE. Dispersed granules are common throughout and pebbles are rare.</p>

Core Photo

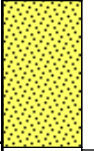

1166A-19R 170.6-180.3 mbsf							
METERS	SECTION	GRAPHIC LITH.	BIOTURB.	STRUCTURE	DISTURB.	SAMPLE	DESCRIPTION
1					—		<p>SAND</p> <p>This core is massive, coarse gray SAND. Dispersed granules are common and pebbles are rare.</p>

Core Photo

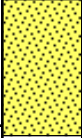

1166A-20R 180.3-189.9 mbsf							
METERS	SECTION	GRAPHIC LITH.	BIOTURB.	STRUCTURE	DISTURB.	SAMPLE	DESCRIPTION
							<p>SAND</p> <p>This core is massive, coarse gray SAND. Granules are common and pebbles are rare.</p>

1166A-21R ENTIRE CORE GIVEN TO PALEONTOLOGISTS

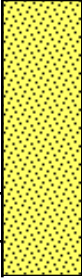

Core Photo

1166A-22R 199.5-209.1 mbsf							
METERS	SECTION	GRAPHIC LITH.	BIOTURB.	STRUCTURE	DISTURB.	SAMPLE	DESCRIPTION
1 0.1							<p>SAND and SANDSTONE</p> <p>This core is gray medium to coarse SAND and SANDSTONE. Section 1, 10-101 cm, is matrix-supported very coarse sand with abundant dispersed granules and common dispersed pebbles. The sand is quartz rich and grains are angular to rounded. Section 1, 101-111 cm, is medium to coarse sandstone with abundant dispersed granules. Three loose pebbles up to 5 cm in diameter occur in Section1, 0-10 cm, and probably fell downhole during drilling.</p>

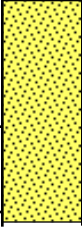

Core Photo

1166A-23R 209.1-218.7 mbsf							
METERS	SECTION	GRAPHIC LITH.	BIOTURB.	STRUCTURE	DISTURB.	SAMPLE	DESCRIPTION
1 1						SS	<p>SAND</p> <p>This core is matrix-supported, very coarse gray SAND with abundant dispersed granules and rare pebbles. Coal fragments are rare (e.g., in Section 1, 45 cm). Sand grains are angular to subrounded.</p>

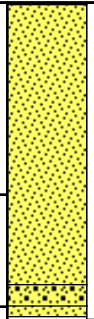

Core Photo

1166A-24R 218.7-228.3 mbsf							
METERS	SECTION	GRAPHIC LITH.	BIOTURB.	STRUCTURE	DISTURB.	SAMPLE	DESCRIPTION
1 1 2 2							<p>SAND</p> <p>This core is gray, matrix-supported very coarse SAND with abundant granules and rare small pebbles. Grains are angular to rounded. Rare pieces of carbonized wood are present and Section CC, 13-15 cm contains a large (3 cm) piece of carbonized wood or low-grade coal. Section 1, 0-4 cm, contains a 3-cm diameter garnet-bearing quartzite pebble, which probably fell downhole during drilling.</p>

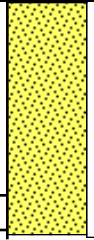


Core Photo

1166A-25R 228.3-237.9 mbsf							
METERS	SECTION	GRAPHIC LITH.	BIOTURB.	STRUCTURE	DISTURB.	SAMPLE	DESCRIPTION
1 1 2							<p>SAND</p> <p>This core is gray matrix-supported, very coarse SAND with abundant granules and rare small pebbles.</p>

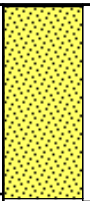
Core Photo

1166A-26R 237.9-247.6 mbsf							
METERS	SECTION	GRAPHIC LITH.	BIOTURB.	STRUCTURE	DISTURB.	SAMPLE	DESCRIPTION
1 1 2							<p>SAND and SILTY SANDSTONE</p> <p>This core is predominantly gray matrix-supported, very coarse SAND with abundant dispersed granules and rare pebbles. Grains are angular to rounded. Rare fragments of carbonized wood or coal are present. Section 2, 70-76 cm, is dark gray SILTY SANDSTONE composed mainly of fine sand grains and cemented with carbonate cement. The upper contact of this bed is inclined from 70 to 76 cm. A mixing zone at this contact contains a coal fragment and a sand pebble from the coarse sand above.</p>


Core Photo

1166A-27R 247.6-257.2 mbsf							
METERS	SECTION	GRAPHIC LITH.	BIOTURB.	STRUCTURE	DISTURB.	SAMPLE	DESCRIPTION
1 2	1 2						<p>SAND</p> <p>This core is gray matrix-supported, very coarse SAND with abundant granules and rare small pebbles. Sand is deformed by soft-sediment deformation in Section 1, 83-150 cm, and Section 2, 0-27 cm. Deformation features include inclined layers, folds, flowage and truncated layers. These deformed layers show both gray and brownish gray color bands.</p>


Core Photo

1166A-28R 257.2-266.8 mbsf							
METERS	SECTION	GRAPHIC LITH.	BIOTURB.	STRUCTURE	DISTURB.	SAMPLE	DESCRIPTION
1 1							<p>SAND</p> <p>This core consists of matrix-supported, very coarse SAND with abundant granules and rare small pebbles. Colors range from light to very dark gray. The sands are highly deformed by soft sediment deformation which includes folds, truncated and dipping beds and flowage. Section 1, 36-60 cm, has deformed beds of carbonitized organic material or lignite. Section 1, 0-7 cm, has clay clasts, cemented sand clasts and a gneiss pebble, which probably were emplaced by drilling.</p>

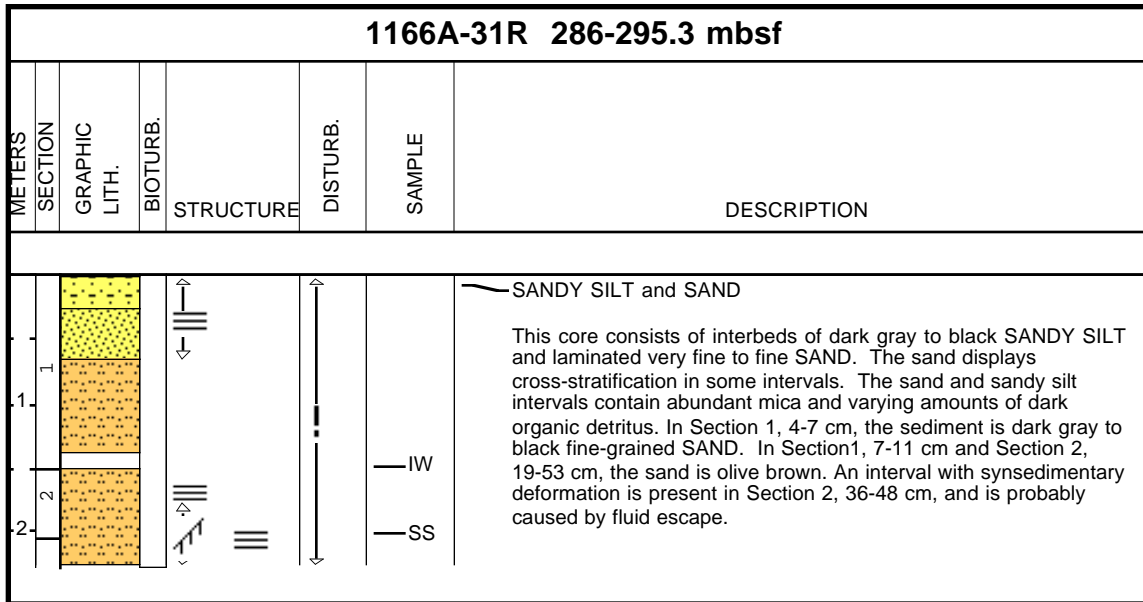
Core Photo

1166A-29R 266.8-276.4 mbsf							
METERS	SECTION	GRAPHIC LITH.	BIOTURB.	STRUCTURE	DISTURB.	SAMPLE	DESCRIPTION
1			2	!			<p>SAND</p> <p>This core is matrix-supported, gray to black very coarse SAND with abundant granules and rare small pebbles. The entire core appears to be deformed by soft-sediment deformation. Section 1, 0-10 cm, contains claystone and mud chips that were apparently emplaced by drilling.</p>

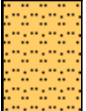


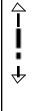
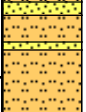



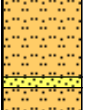


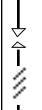
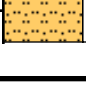



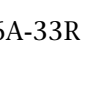



Core Photo

1166A-30R 276.4-286 mbsf							
METERS	SECTION	GRAPHIC LITH.	BIOTURB.	STRUCTURE	DISTURB.	SAMPLE	DESCRIPTION
1						SS	CLAY
							<p>This core is black CLAY. Section 1, 0-4 cm, has a 4 cm pebble and a carbonitized wood or coal clast, both of which may have been emplaced by drilling.</p>

Core Photo

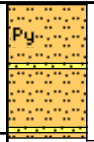




Core Photo

1166A-32R 295.3-304.9 mbsf							
METERS	SECTION	GRAPHIC LITH.	BIOTURB.	STRUCTURE	DISTURB.	SAMPLE	DESCRIPTION
1	1						<p>SANDY SILT and SAND</p> <p>This core consists of dark gray to black, very fine SANDY SILT and thin intervals of laminated, very fine to fine SAND, which displays intervals of cross-stratification. Sand and sandy silt intervals consist varying amounts of dark organic detritus, which forms laminae in some intervals. In Section 1, 82-90 cm, 114-119 cm and Section 2, 96-101 cm, 2-6 cm thick intervals of brownish lithified SAND with possible siderite cement occur. Burrow-like structures are present in Section 1, 48-62 cm, 100-104 cm, 121-134 cm, and in Section 2, 5-17 cm, 88-96 cm, and 100-128 cm.</p>
1.1	1						
2	2						
2.1	2						
3	3						

1166A-33R ENTIRE CORE GIVEN TO PALEONTOLOGISTS


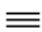


Core Photo

1166A-34R 313.9-323.5 mbsf							
METERS	SECTION	GRAPHIC LITH.	BIOTURB.	STRUCTURE	DISTURB.	SAMPLE	DESCRIPTION
1 1							<p>SANDY SILT and SAND</p> <p>This core consists of dark gray to black, very fine SANDY SILT and thin cm-scale intervals of laminated, very fine to fine SAND. Sand and sandy silt intervals show color alternations from dark gray to brown. Dark organic detritus forms individual laminae in Section 1, 30-38 cm. In Section 1, 97-101 cm, coarser sandy material occurs. One 1x1 cm pyrite nodule is present in Section 1, 36 cm.</p>

1166A-35R NO RECOVERY

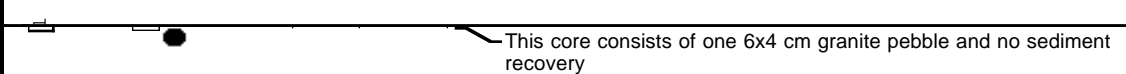
1166A-36R NO RECOVERY

Core Photo

1166A-37R 342.8-352.4 mbsf							
METERS	SECTION	GRAPHIC LITH.	BIOTURB.	STRUCTURE	DISTURB.	SAMPLE	DESCRIPTION
1						SS	SANDY SILT and CLAY This core consists of gray SANDY SILT and laminated gray CLAY. The core is disturbed by drilling and consists of two biscuits showing these lithologies and gray drilling slurry.

1166A-38R NO RECOVERY

Core Photo

1166A-39R 362-371.6 mbsf						
METERS	SECTION	GRAPHIC LITH.	BIOTURB.	STRUCTURE	DISTURB.	SAMPLE
						DESCRIPTION
 <p>This core consists of one 6x4 cm granite pebble and no sediment recovery</p>						

1166A-40R NO RECOVERY

