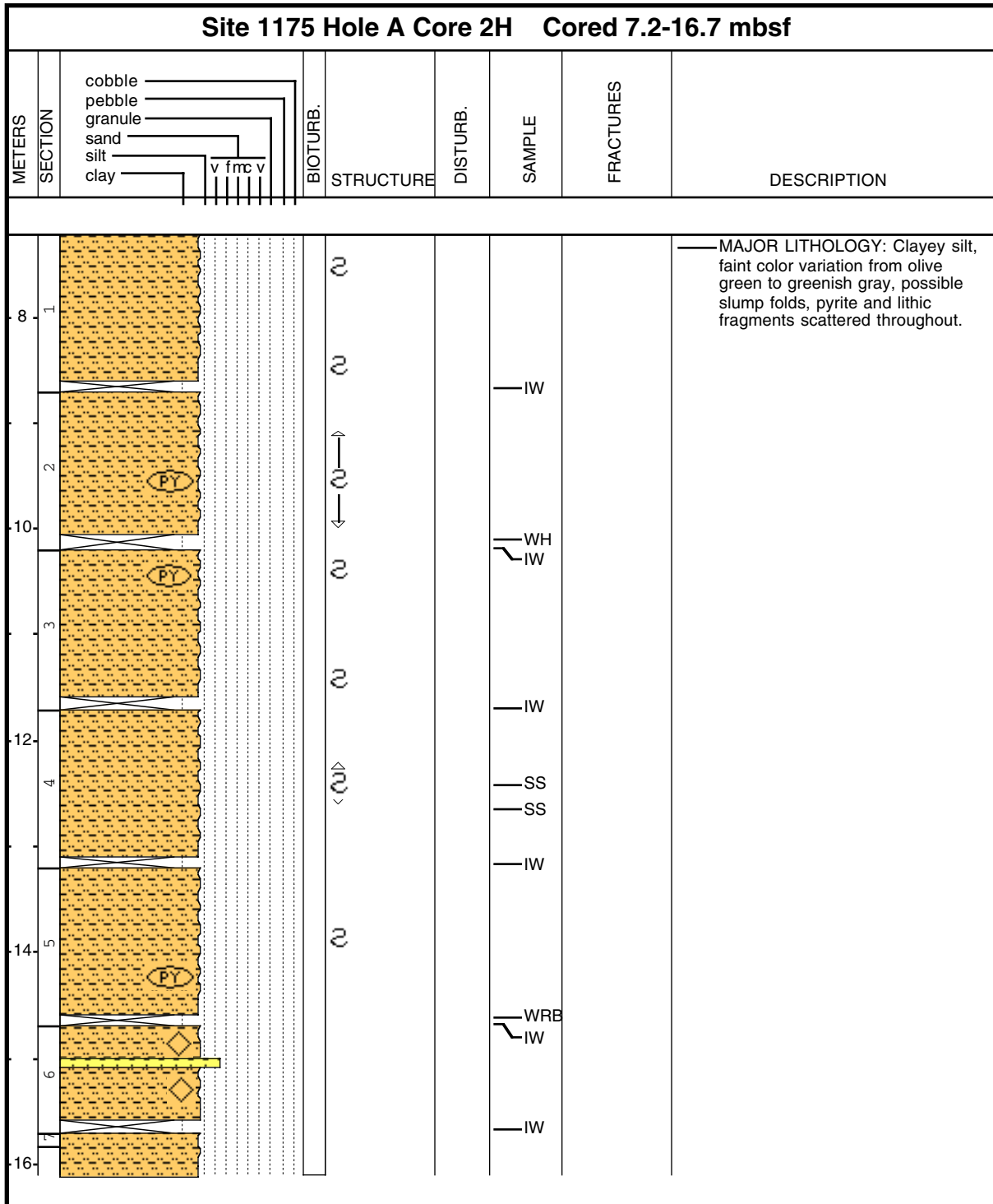
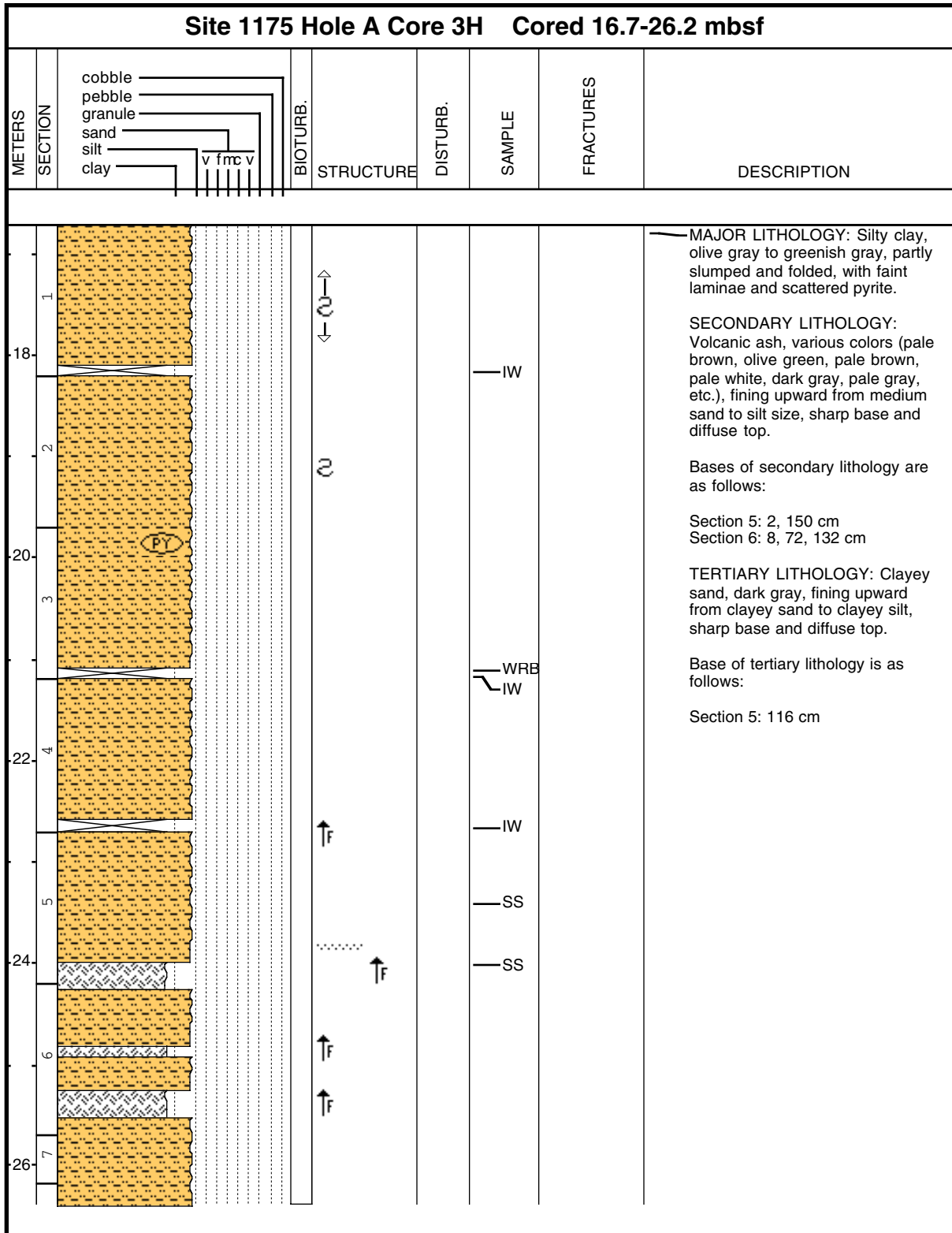




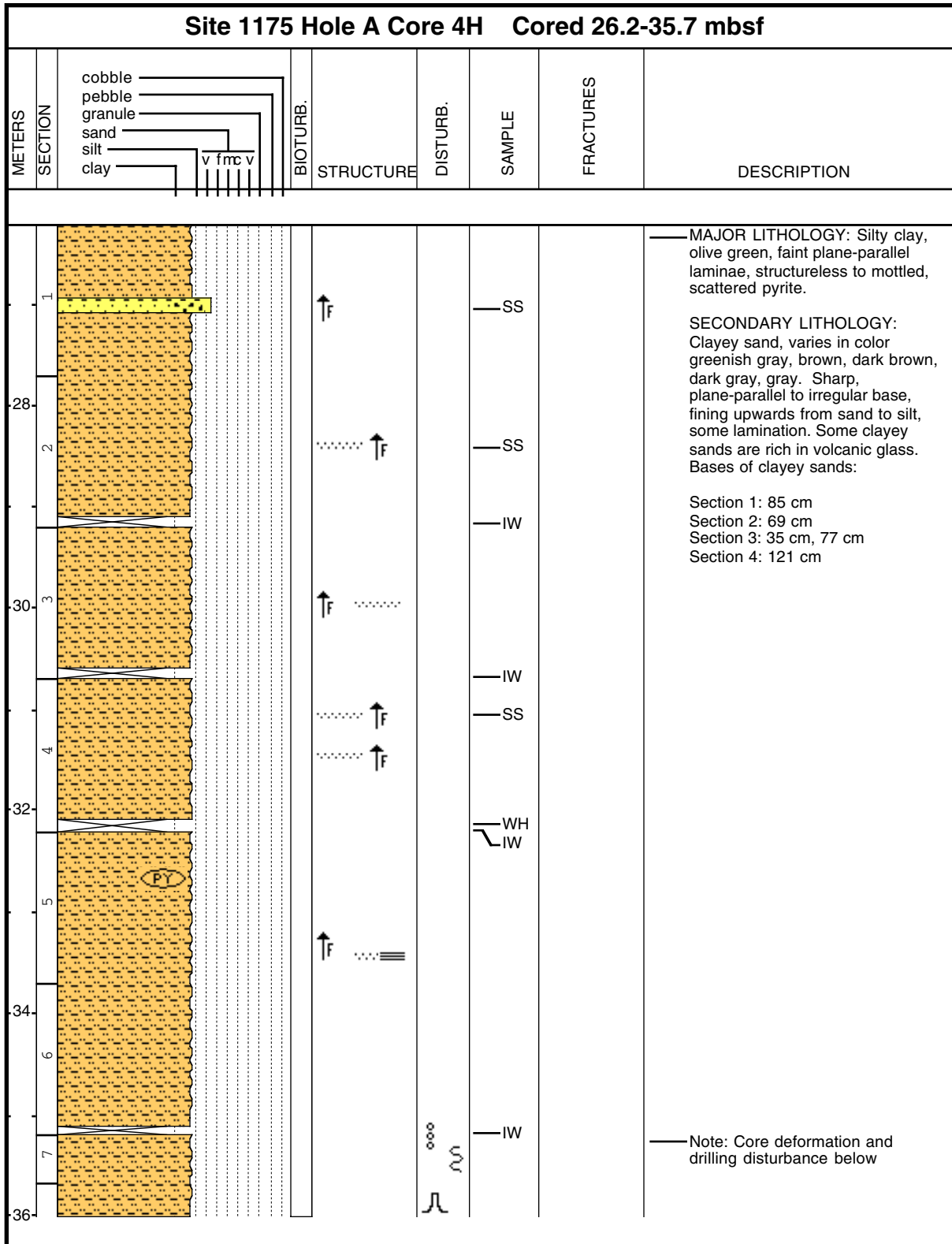
Core Photo



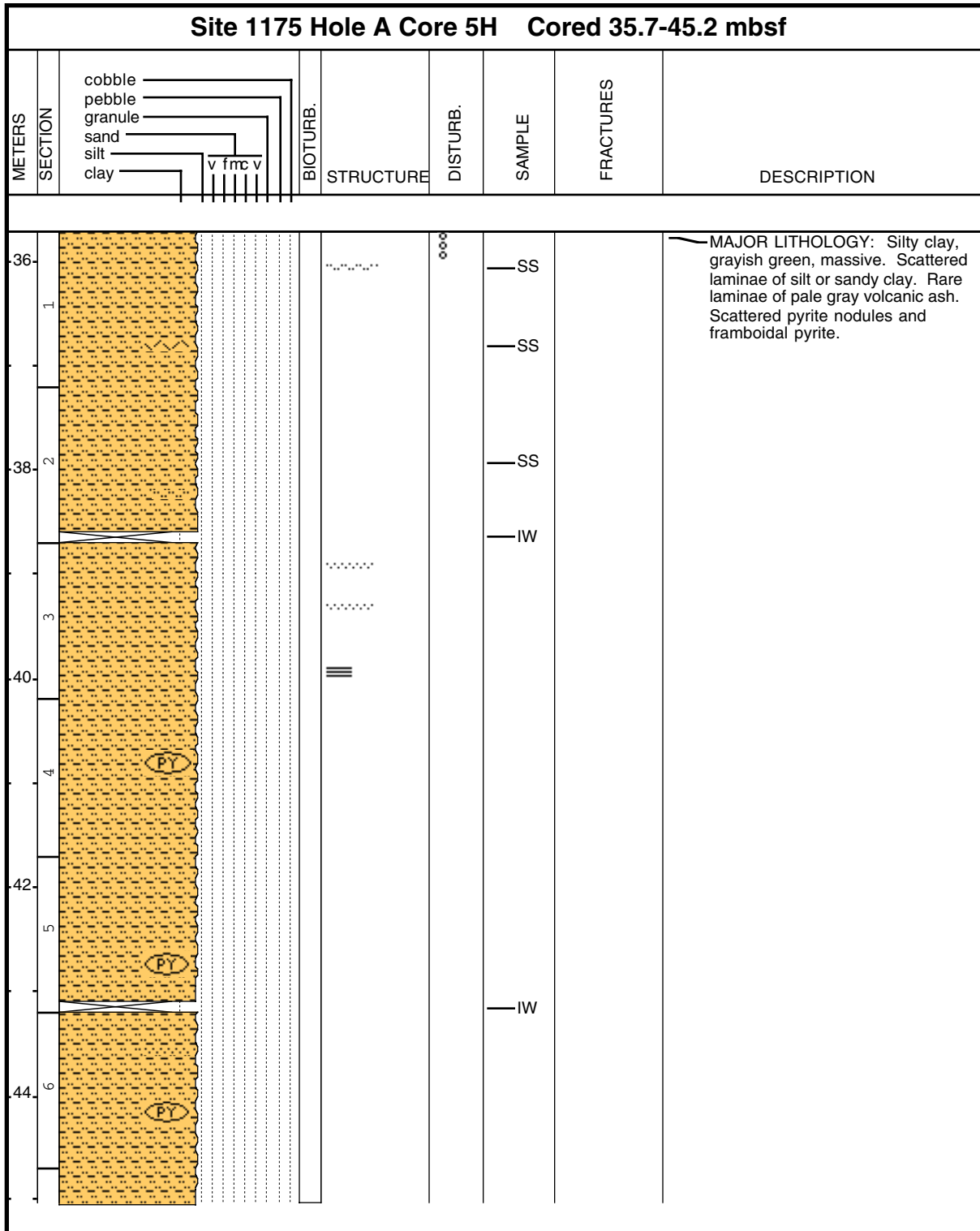
Core Photo



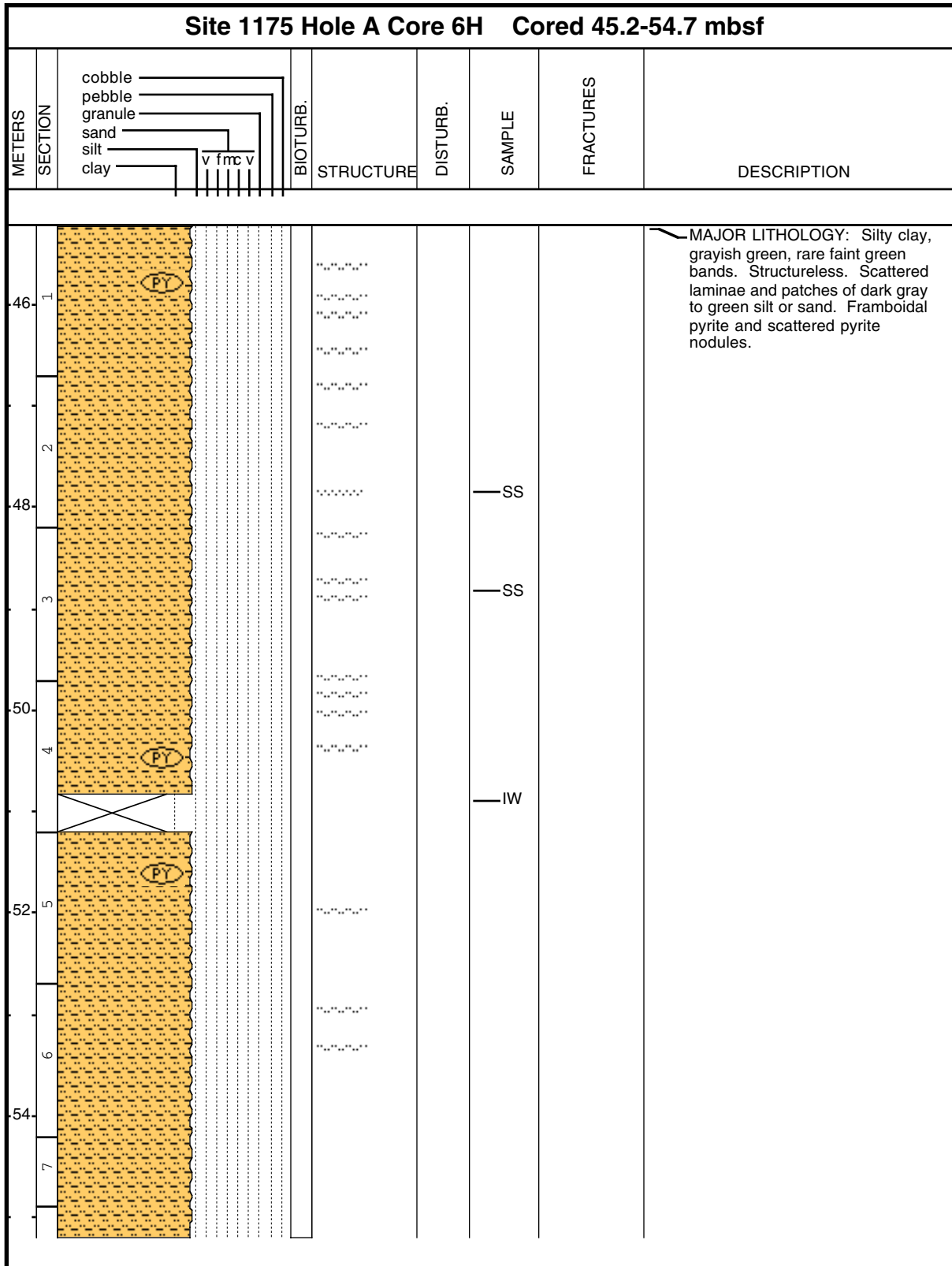
Core Photo



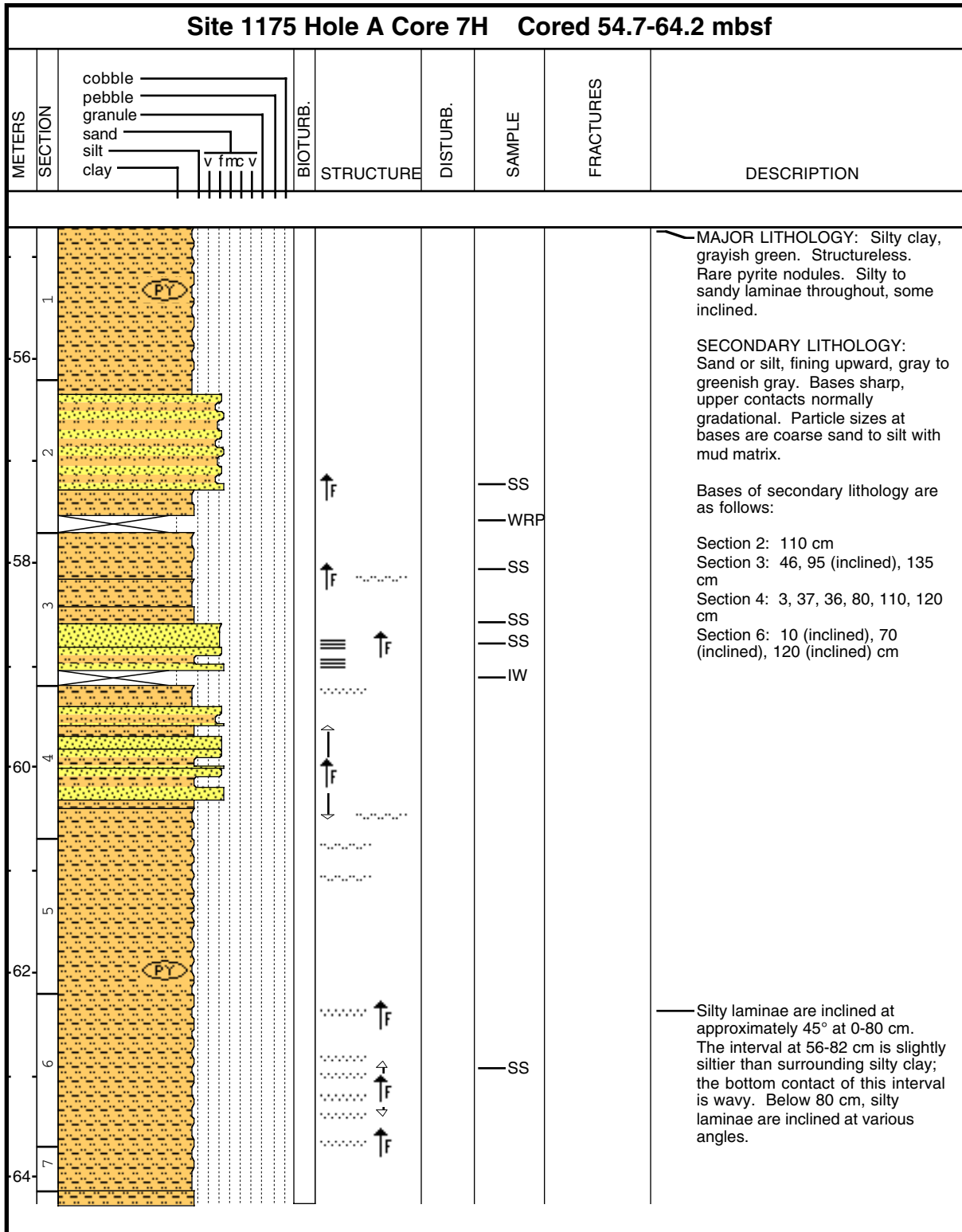
**Core Photo**



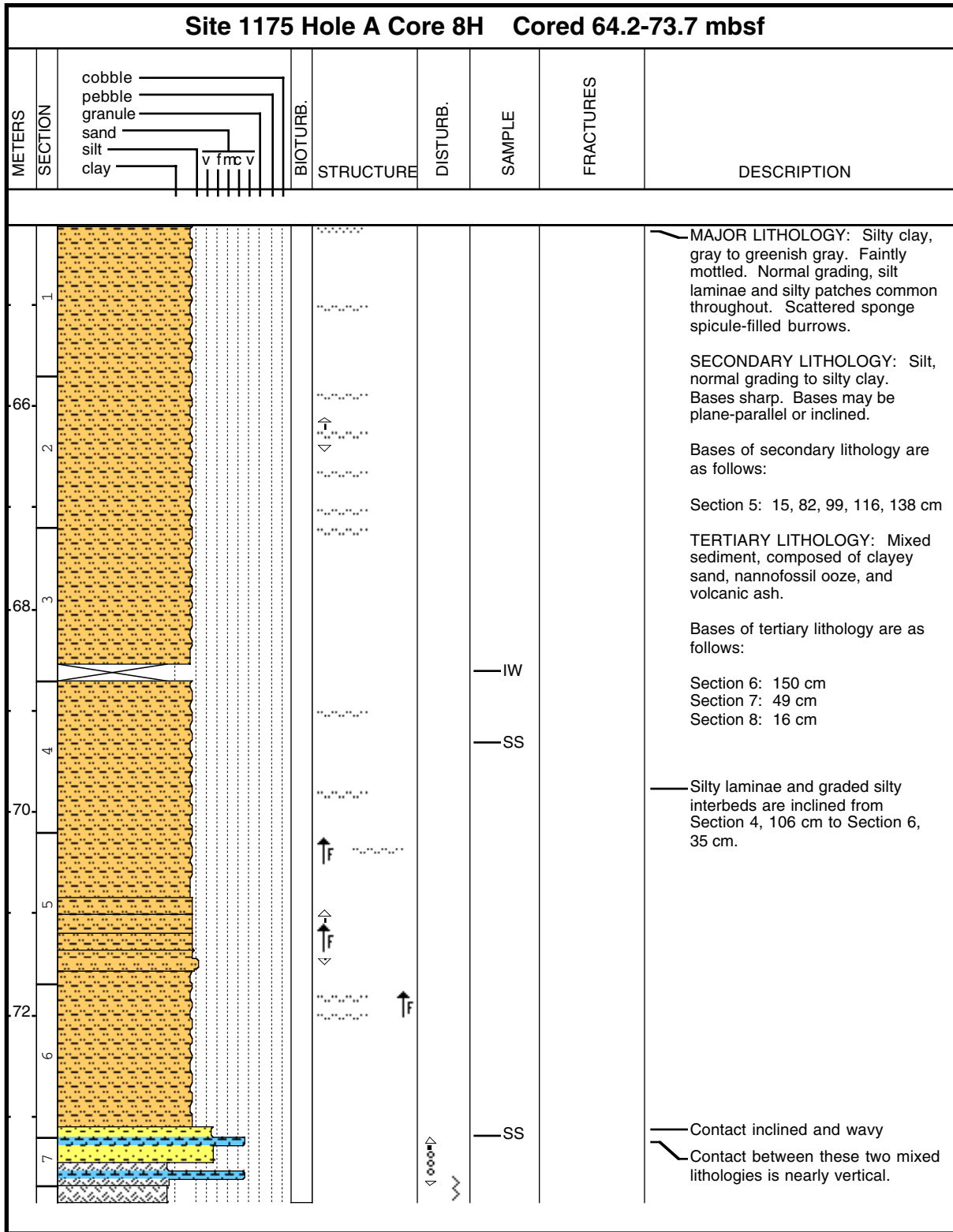
**Core Photo**



Core Photo

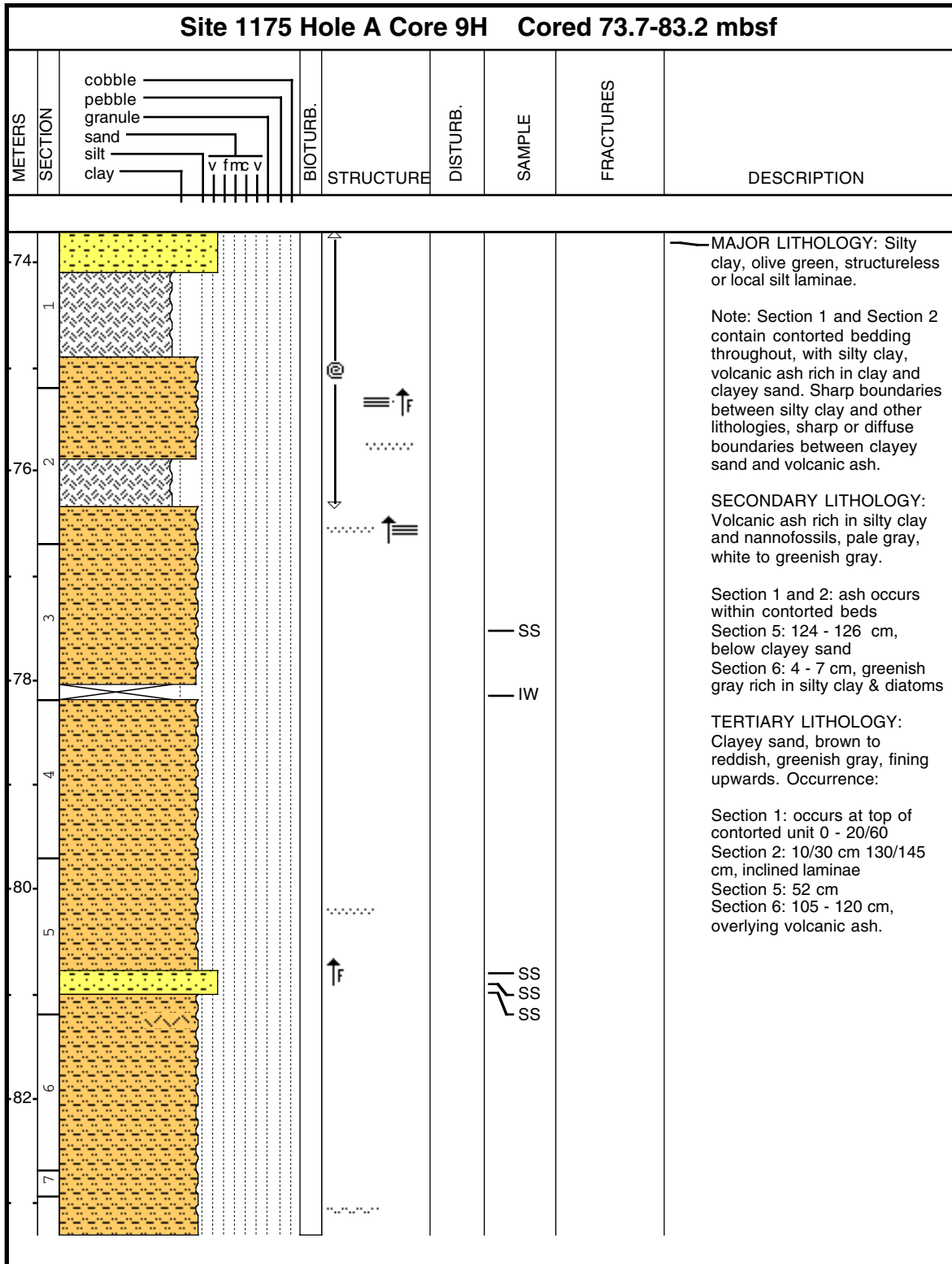


Core Photo

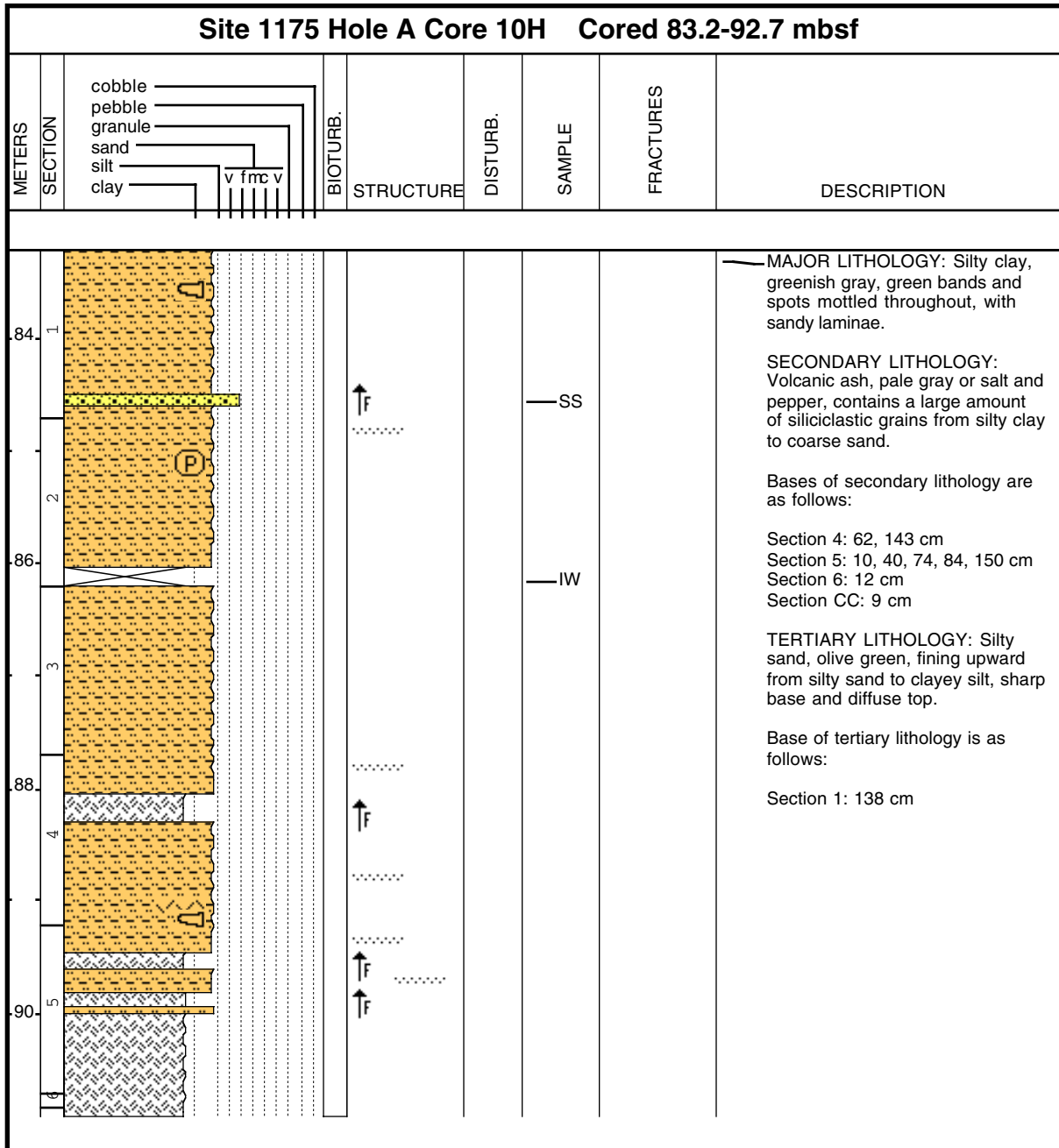




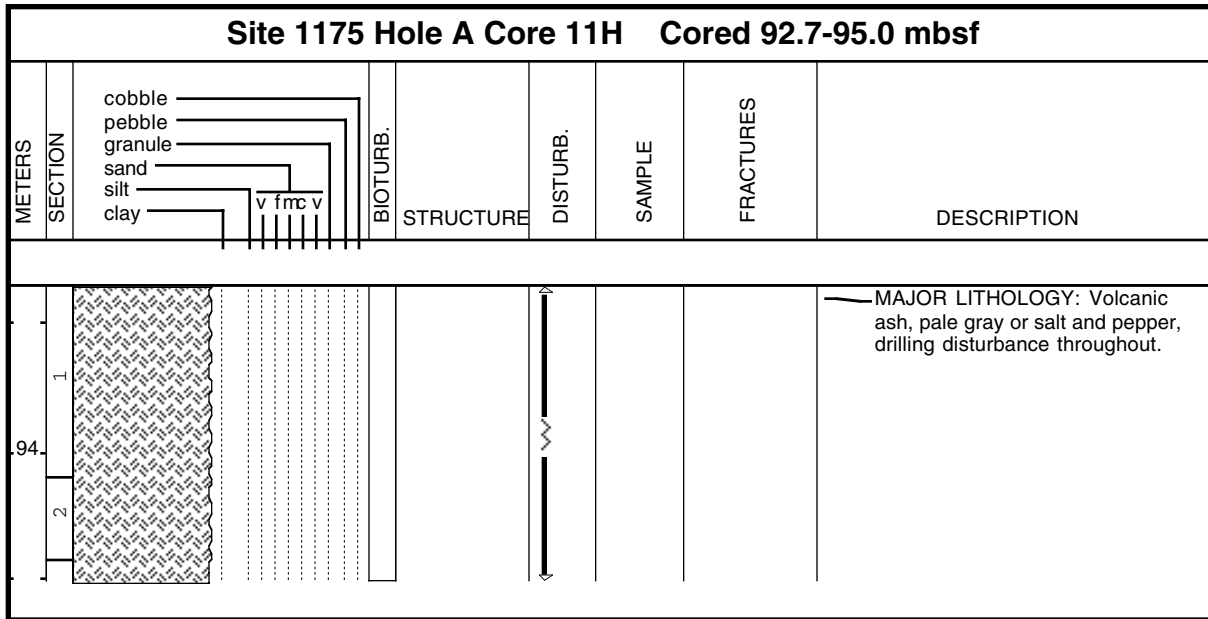
Core Photo



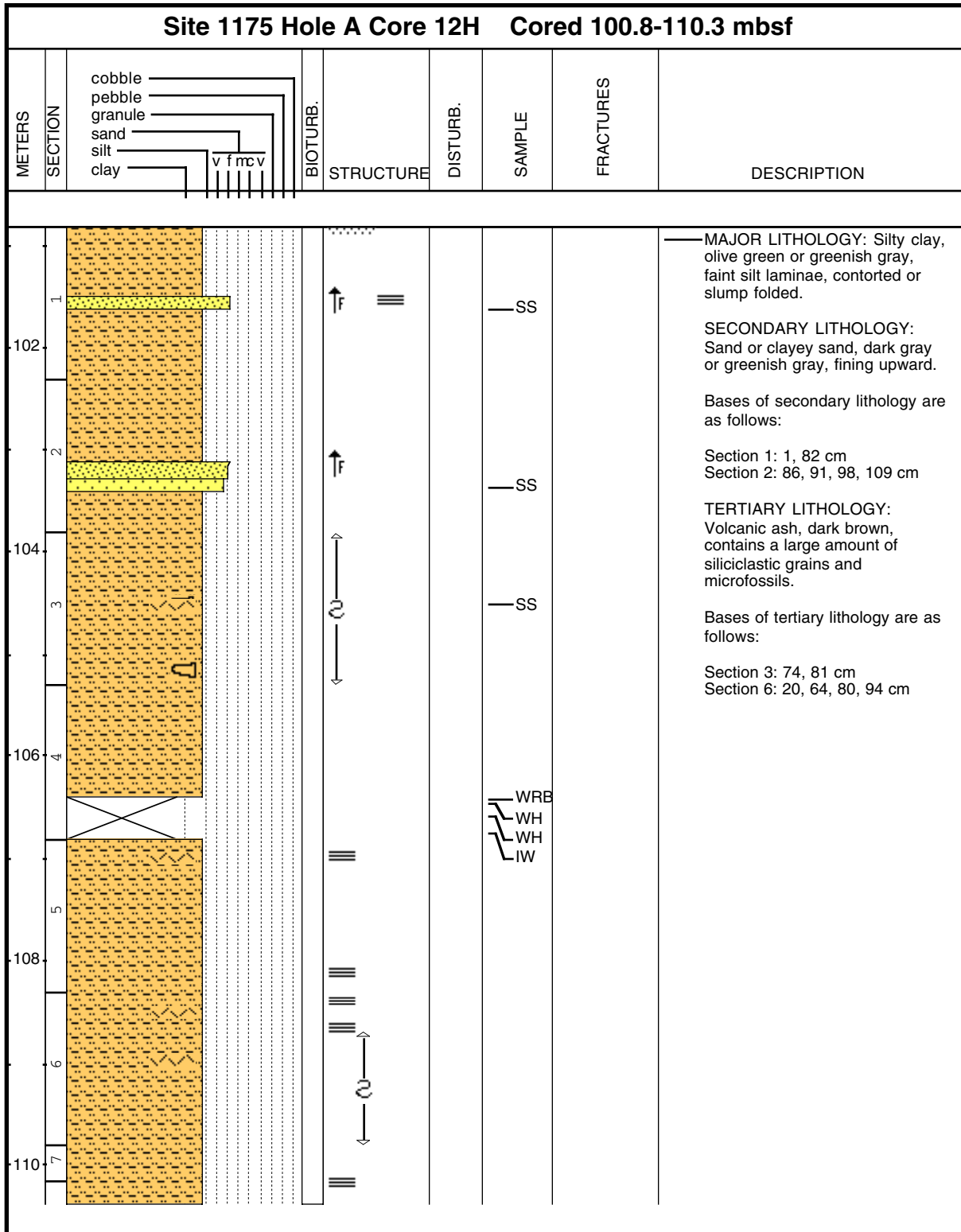
**Core Photo**



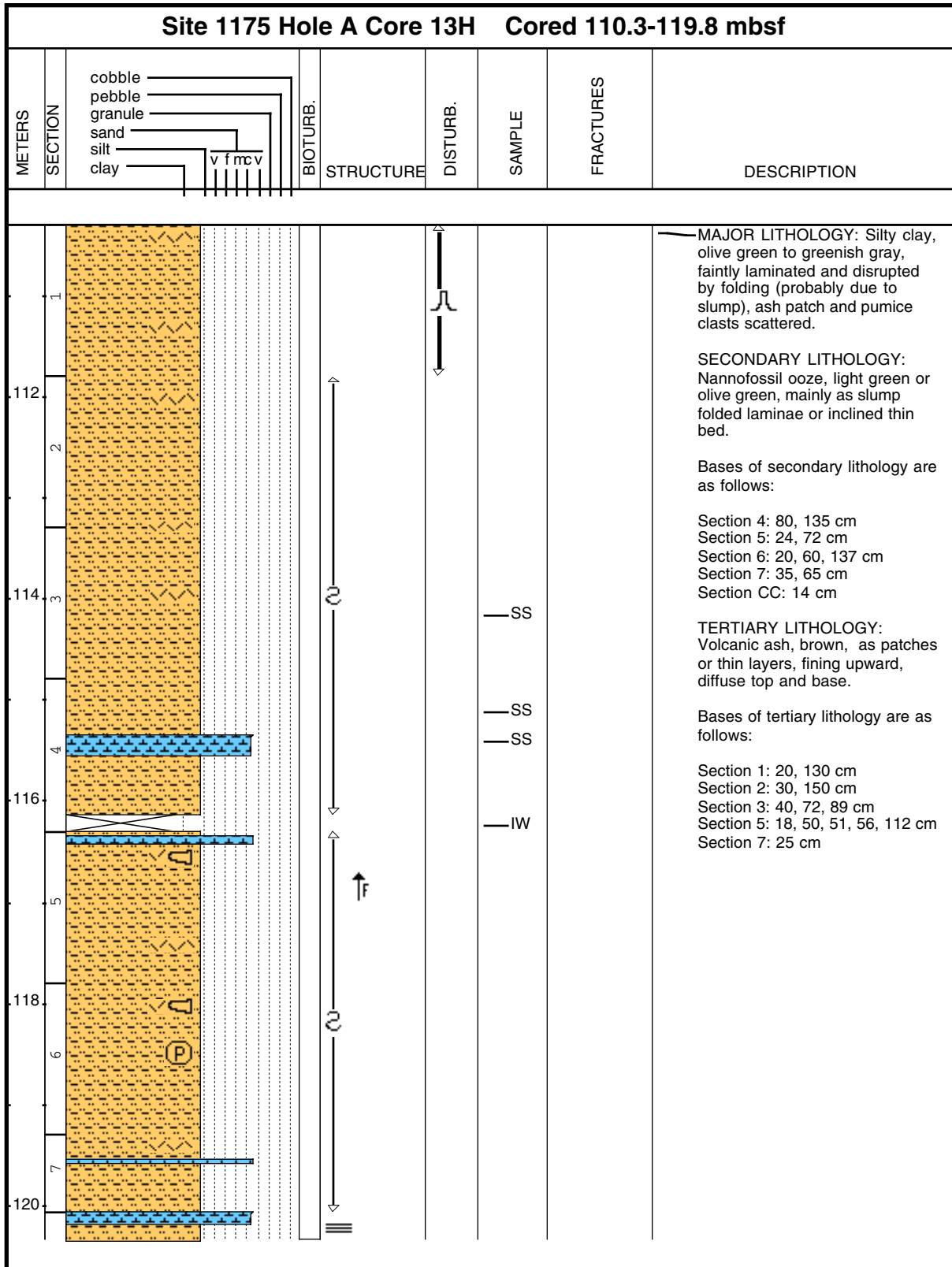
**Core Photo**



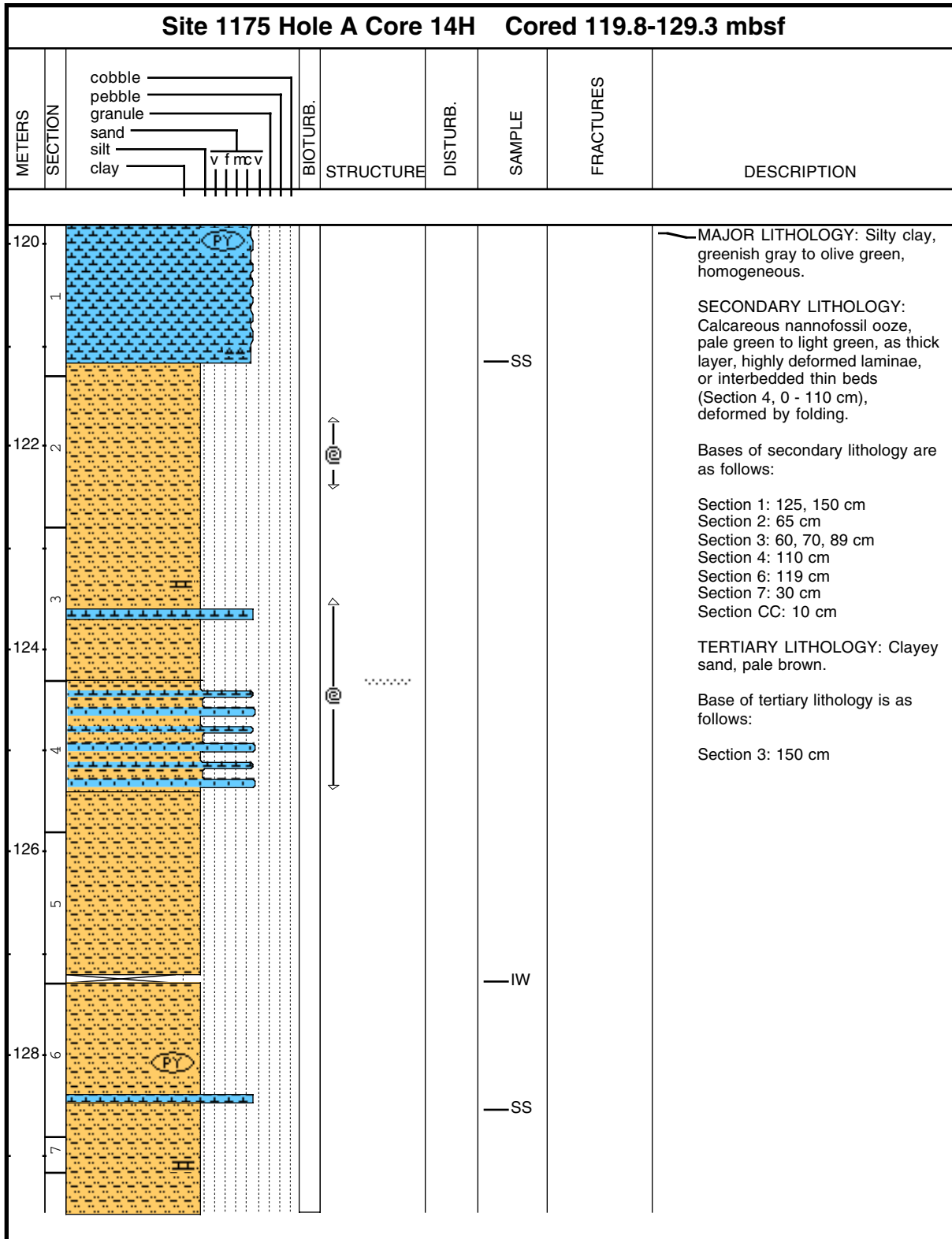
Core Photo



**Core Photo**

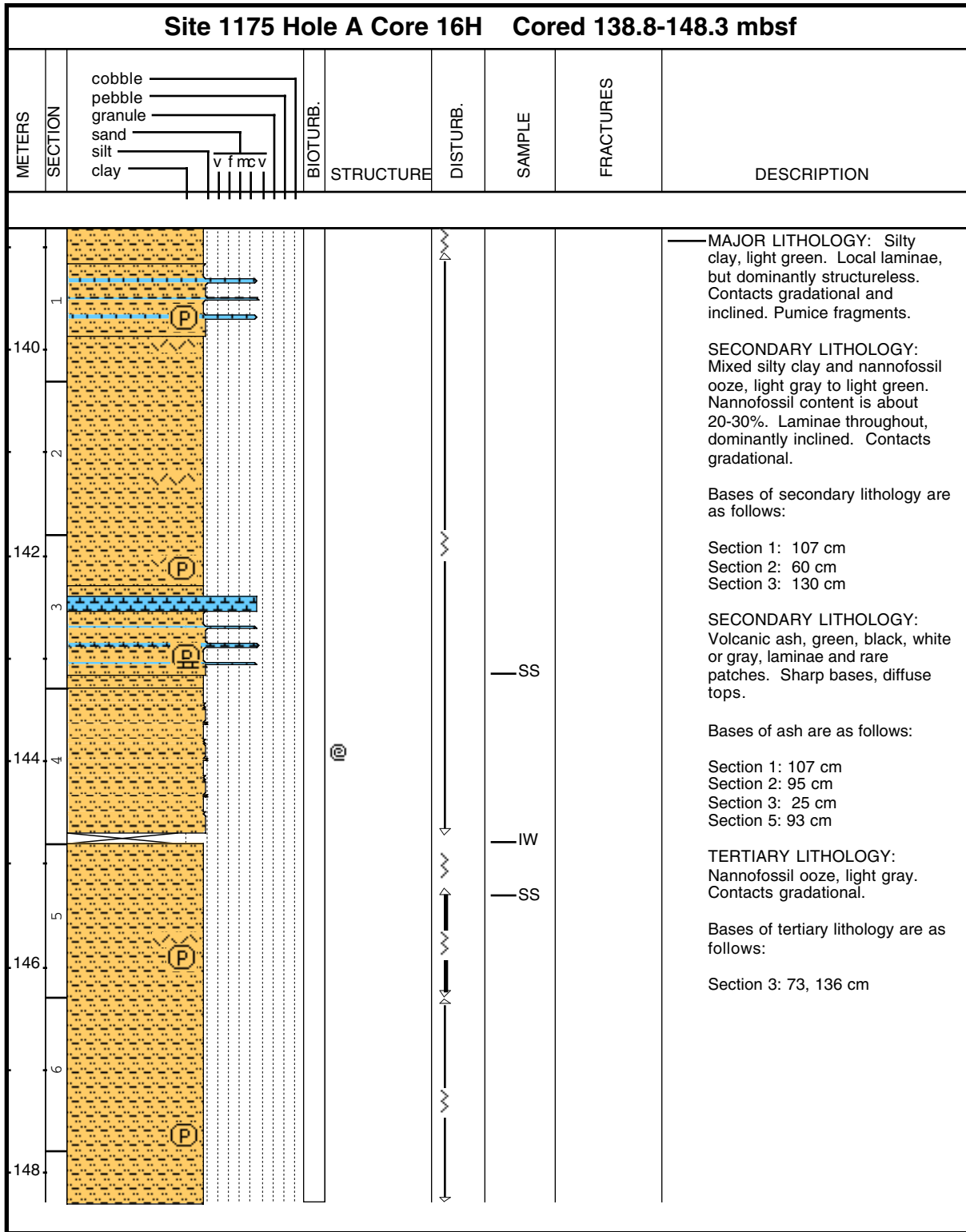


Core Photo



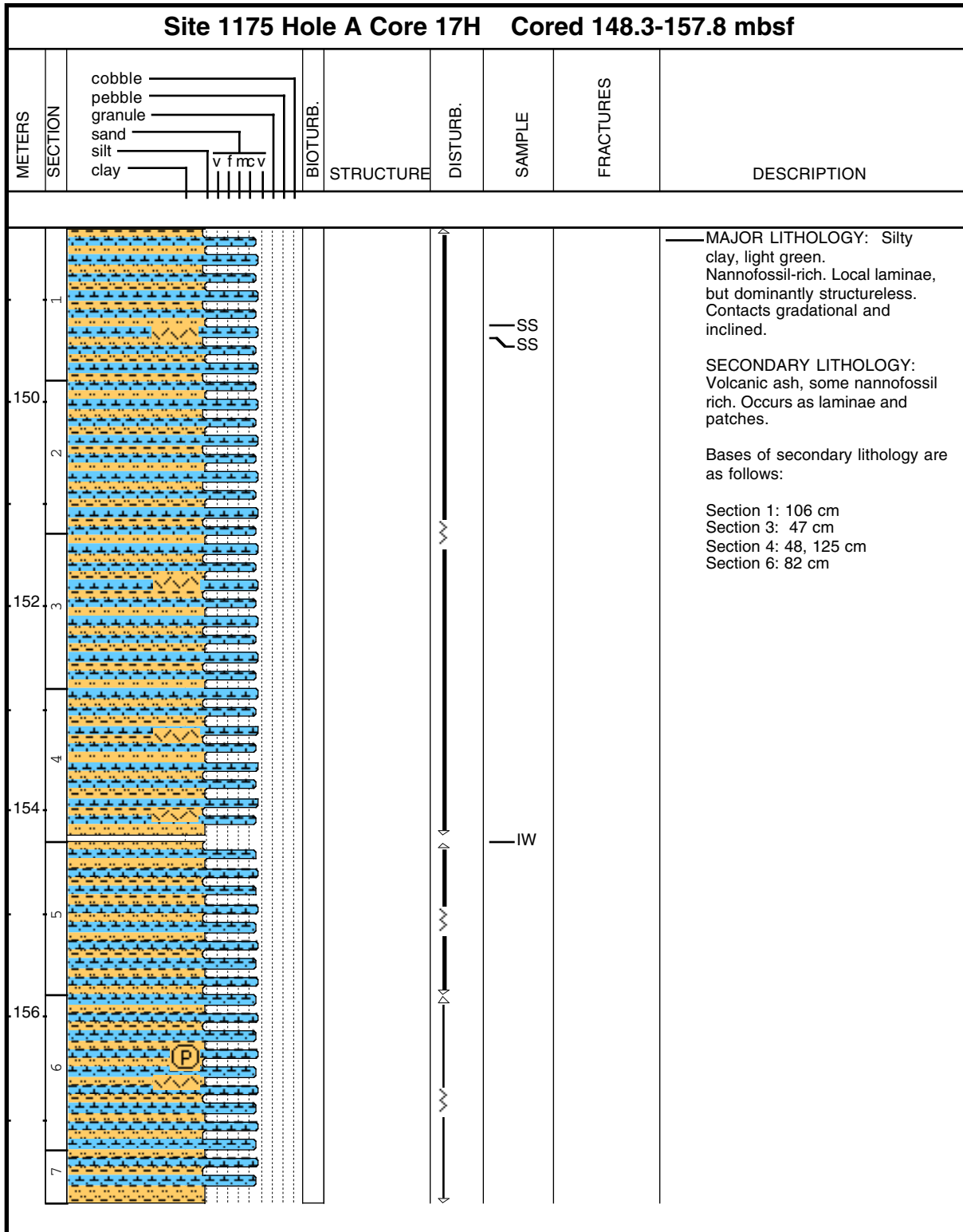


Core Photo

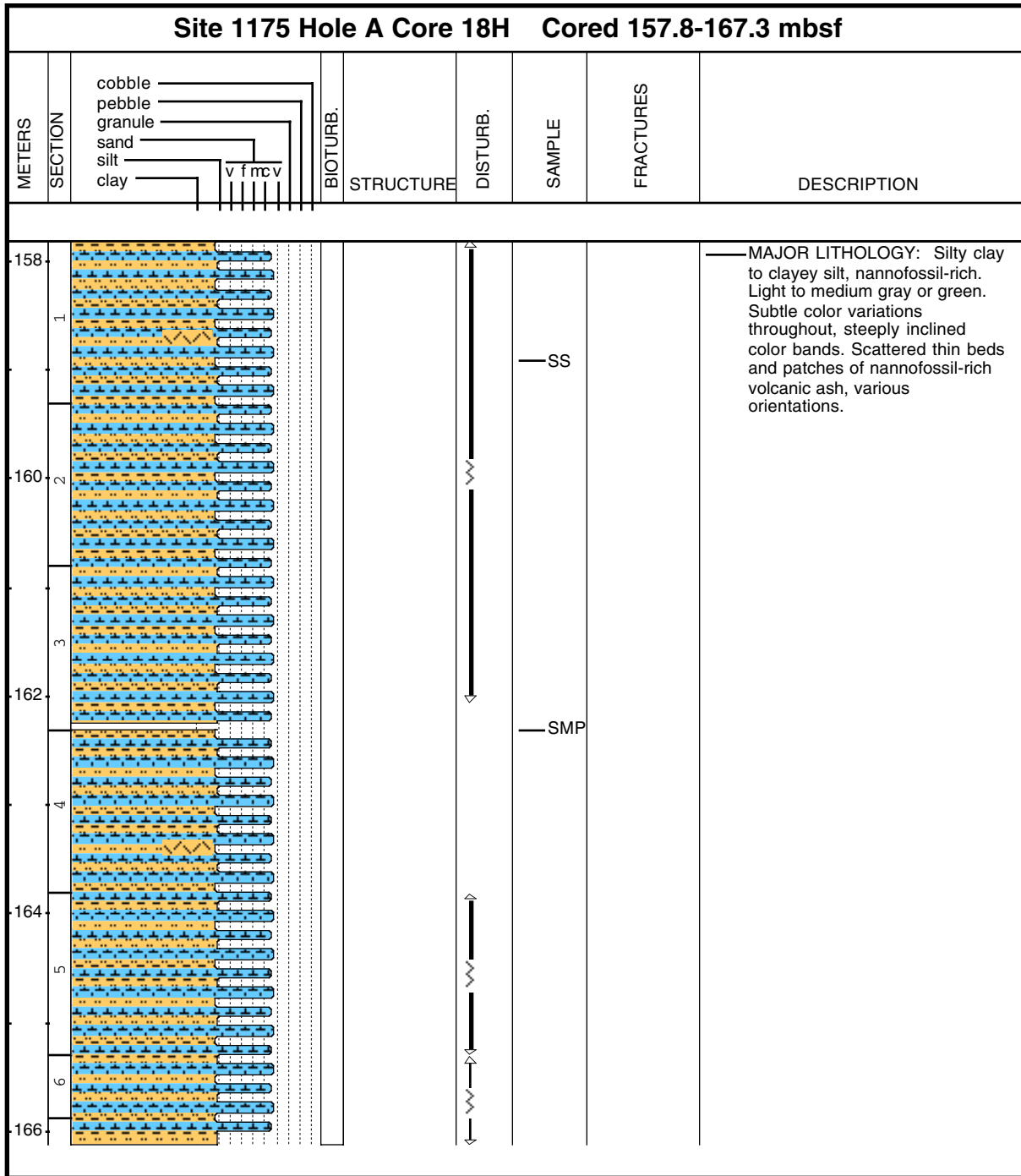




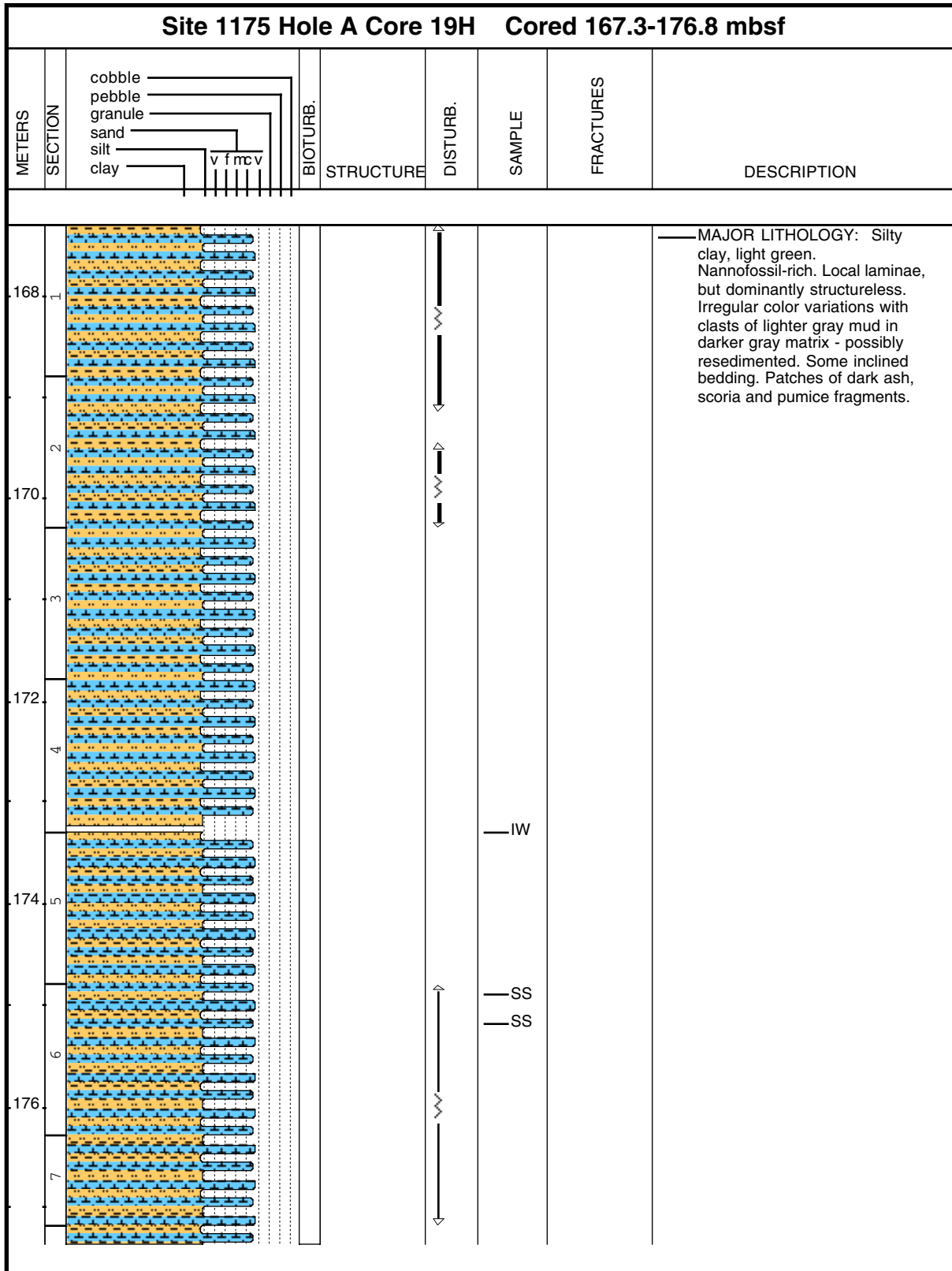
**Core Photo**



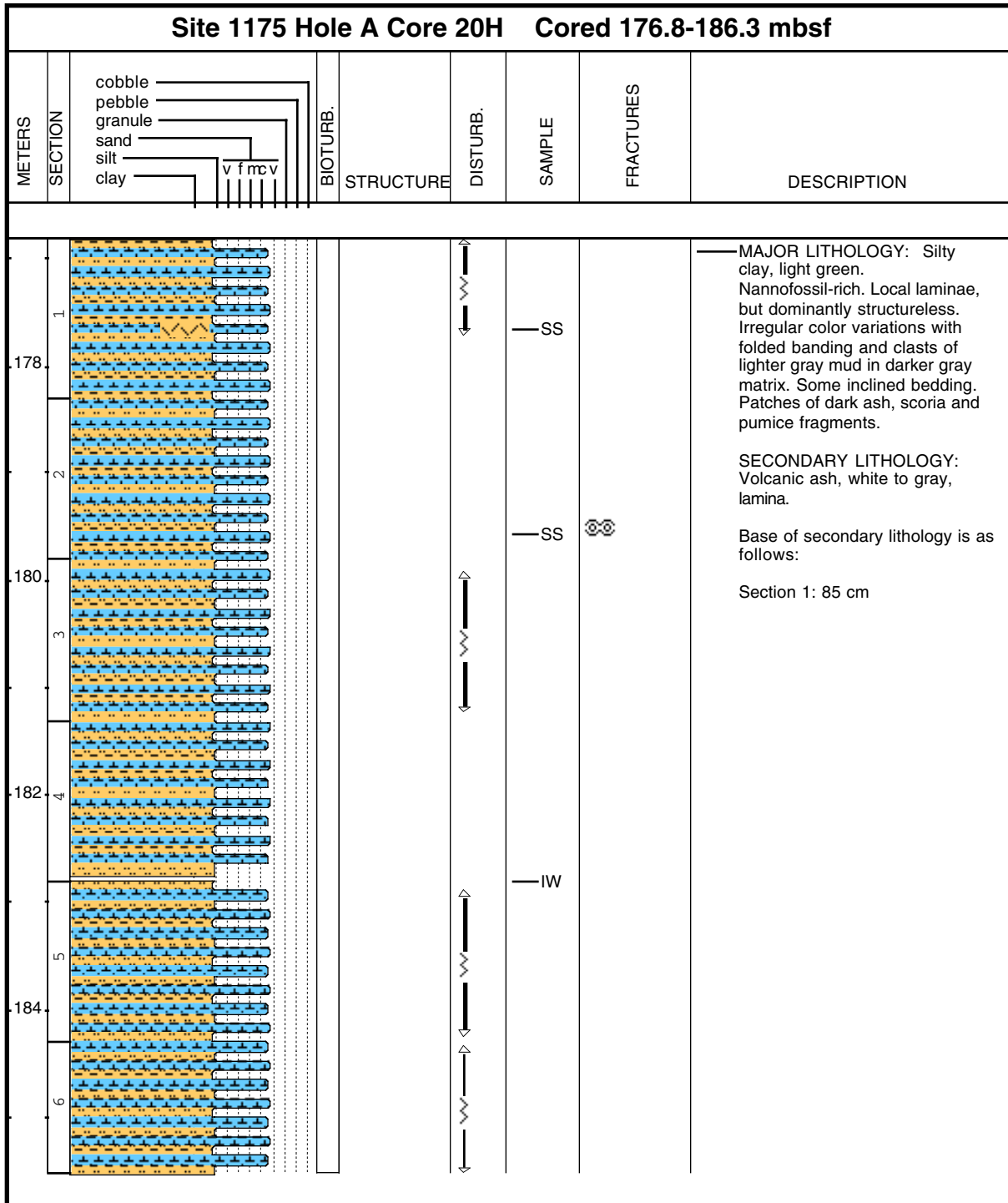
Core Photo



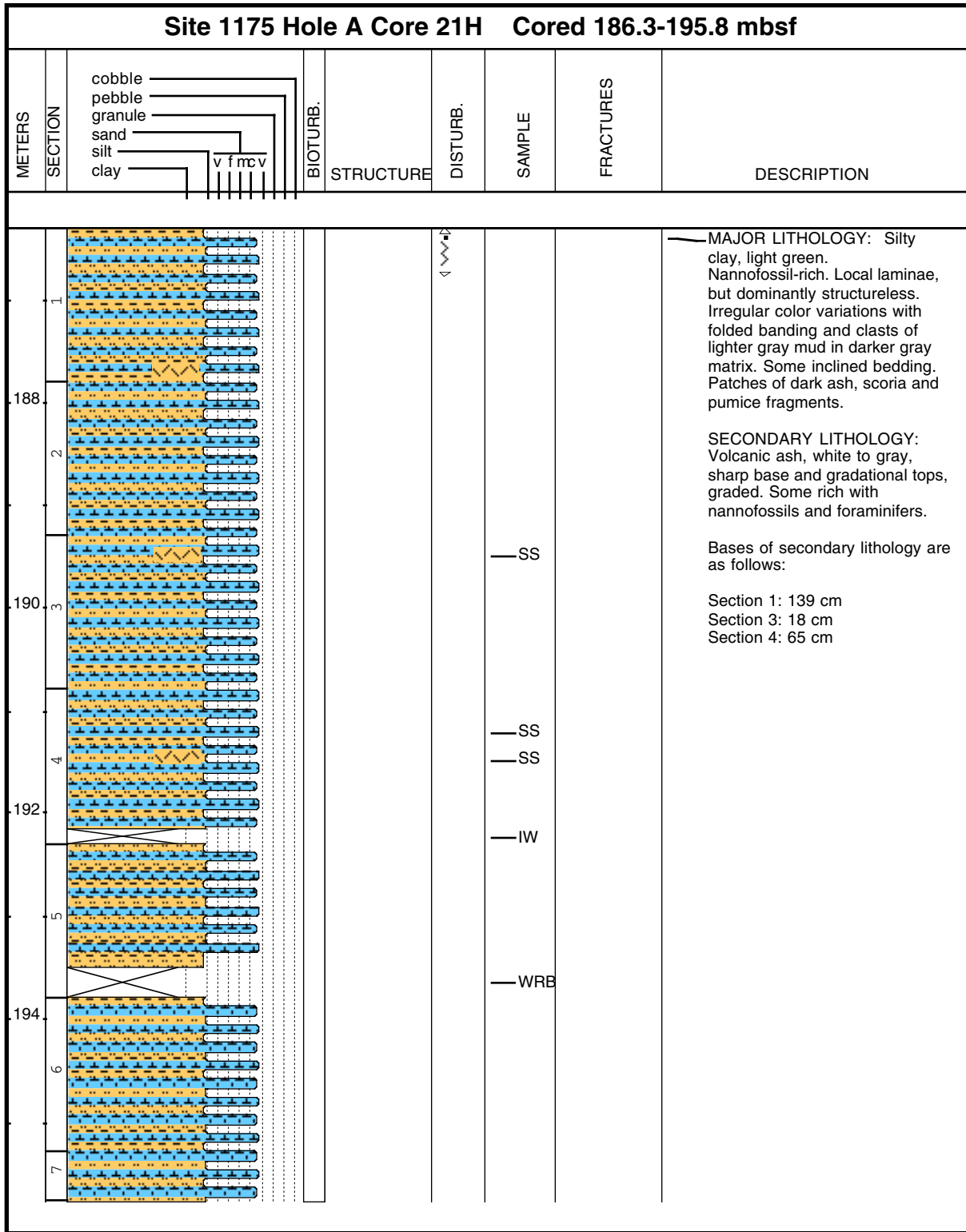
Core Photo



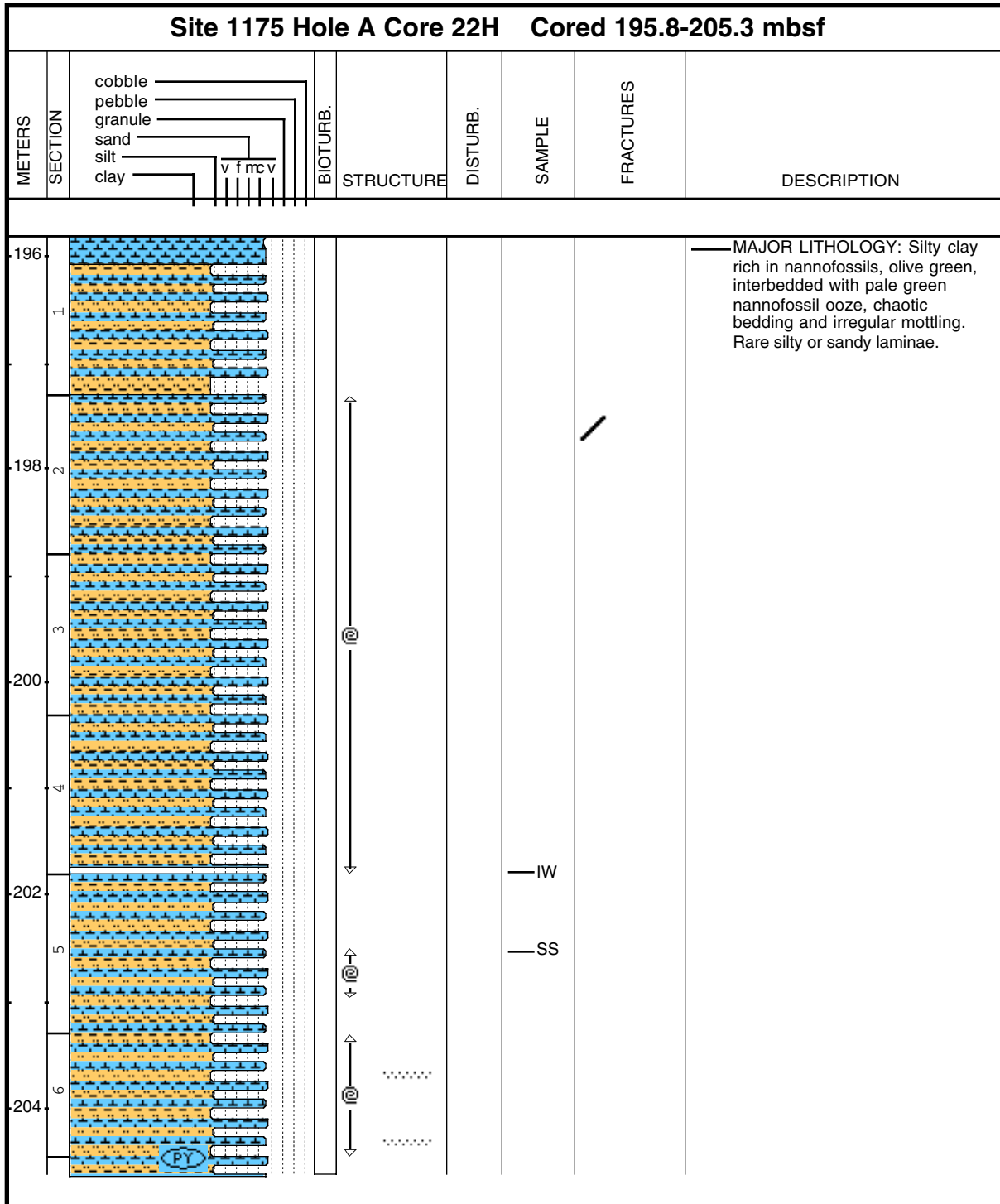
Core Photo



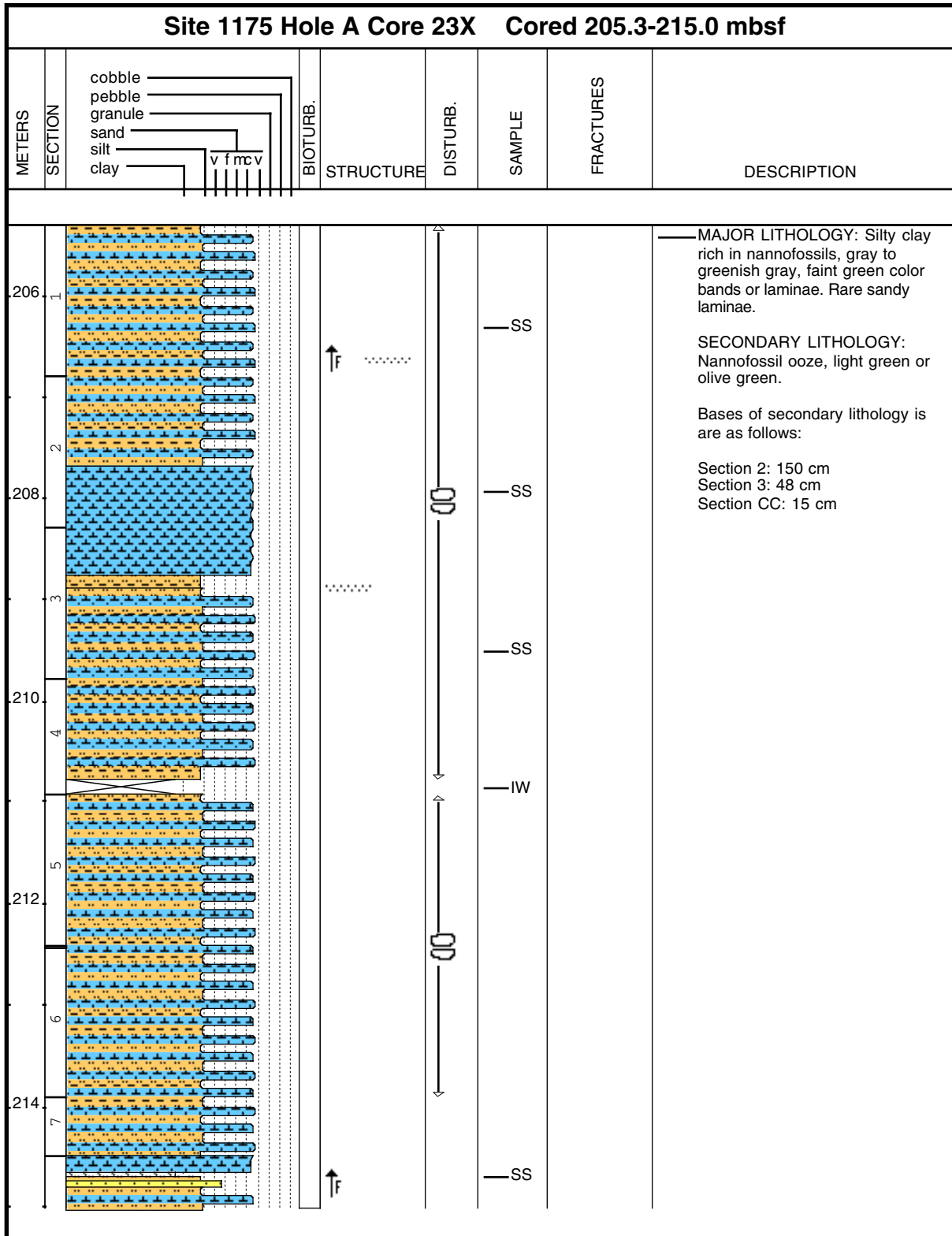
Core Photo



Core Photo

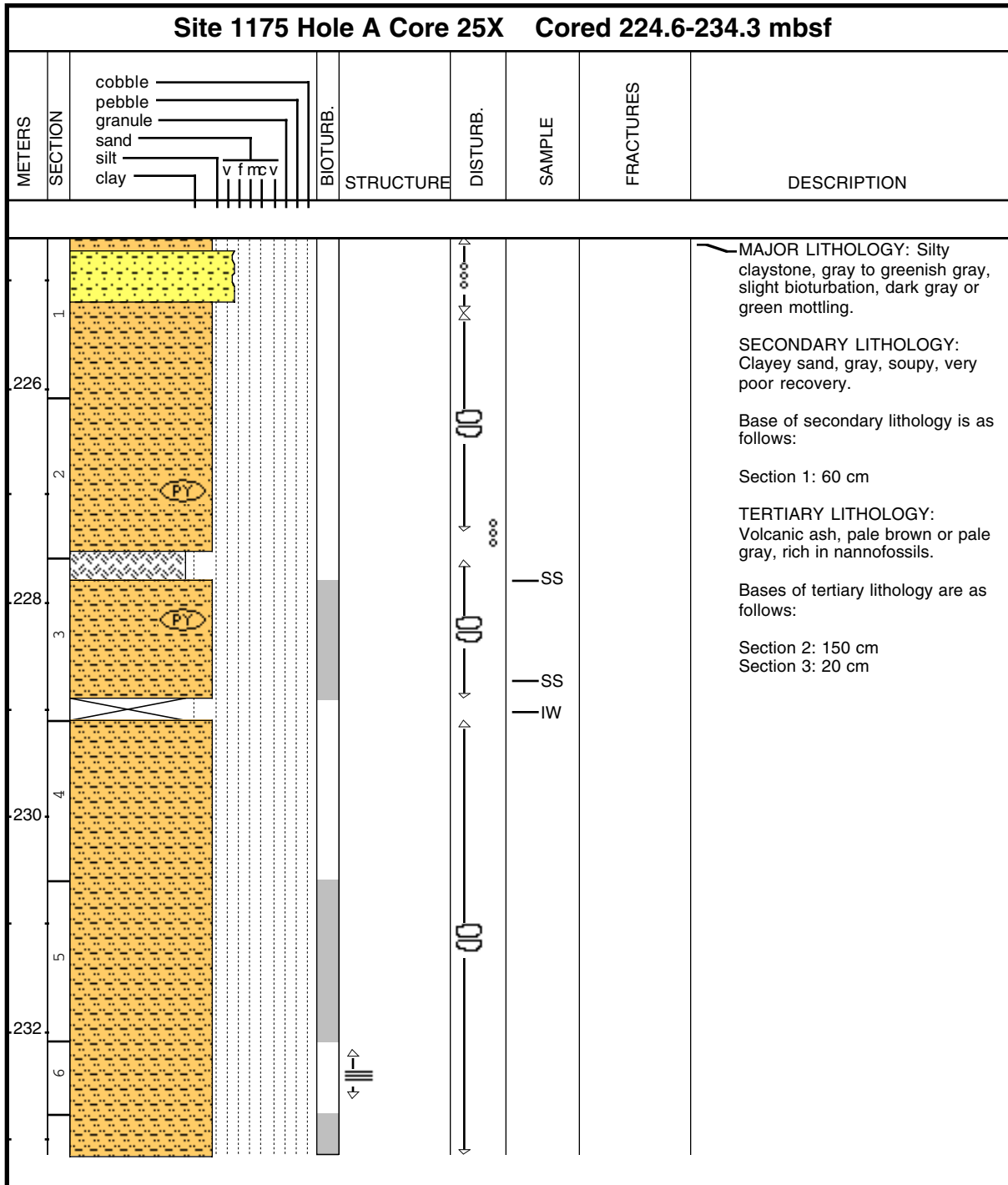


Core Photo



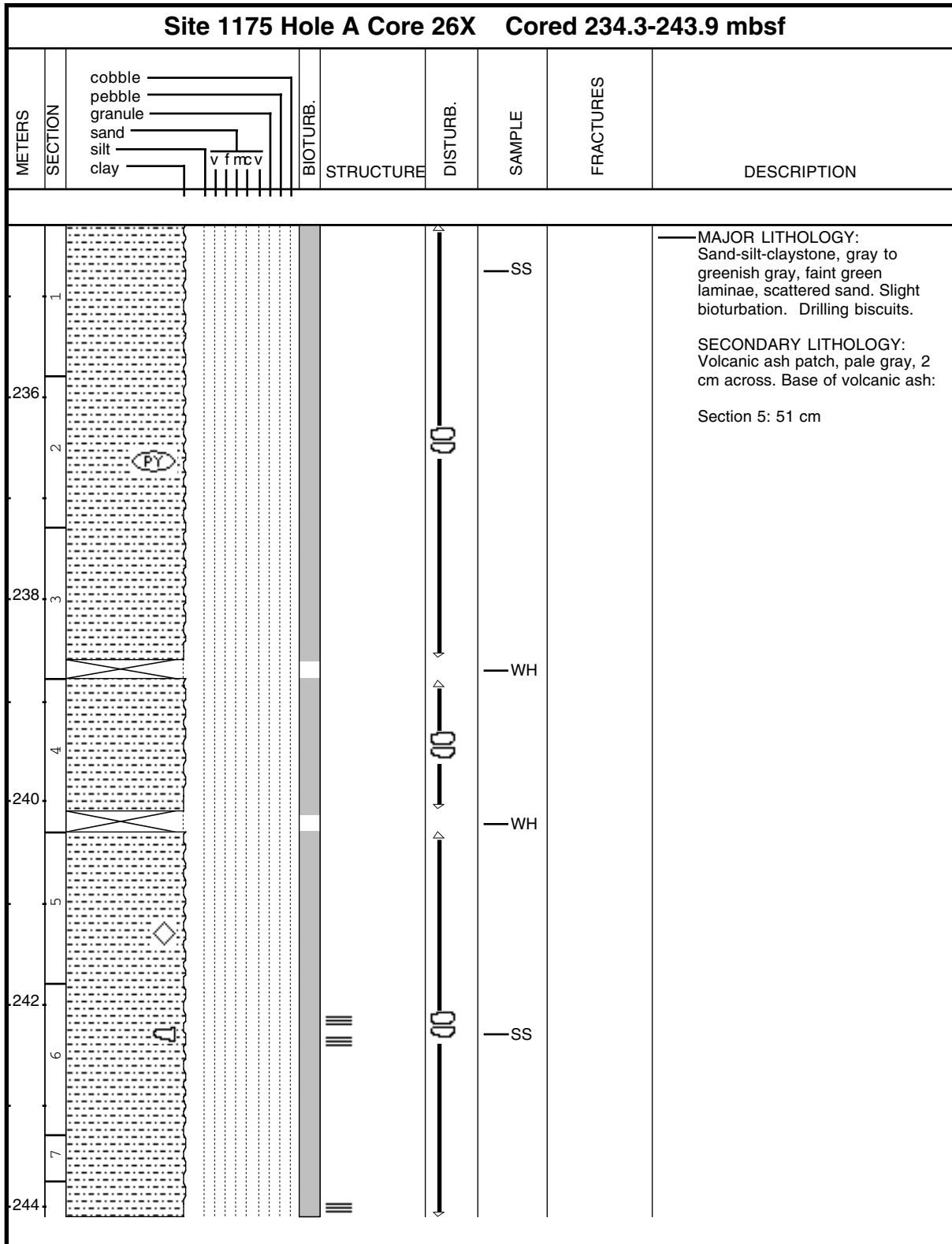
1175A-24X NO RECOVERY

Core Photo

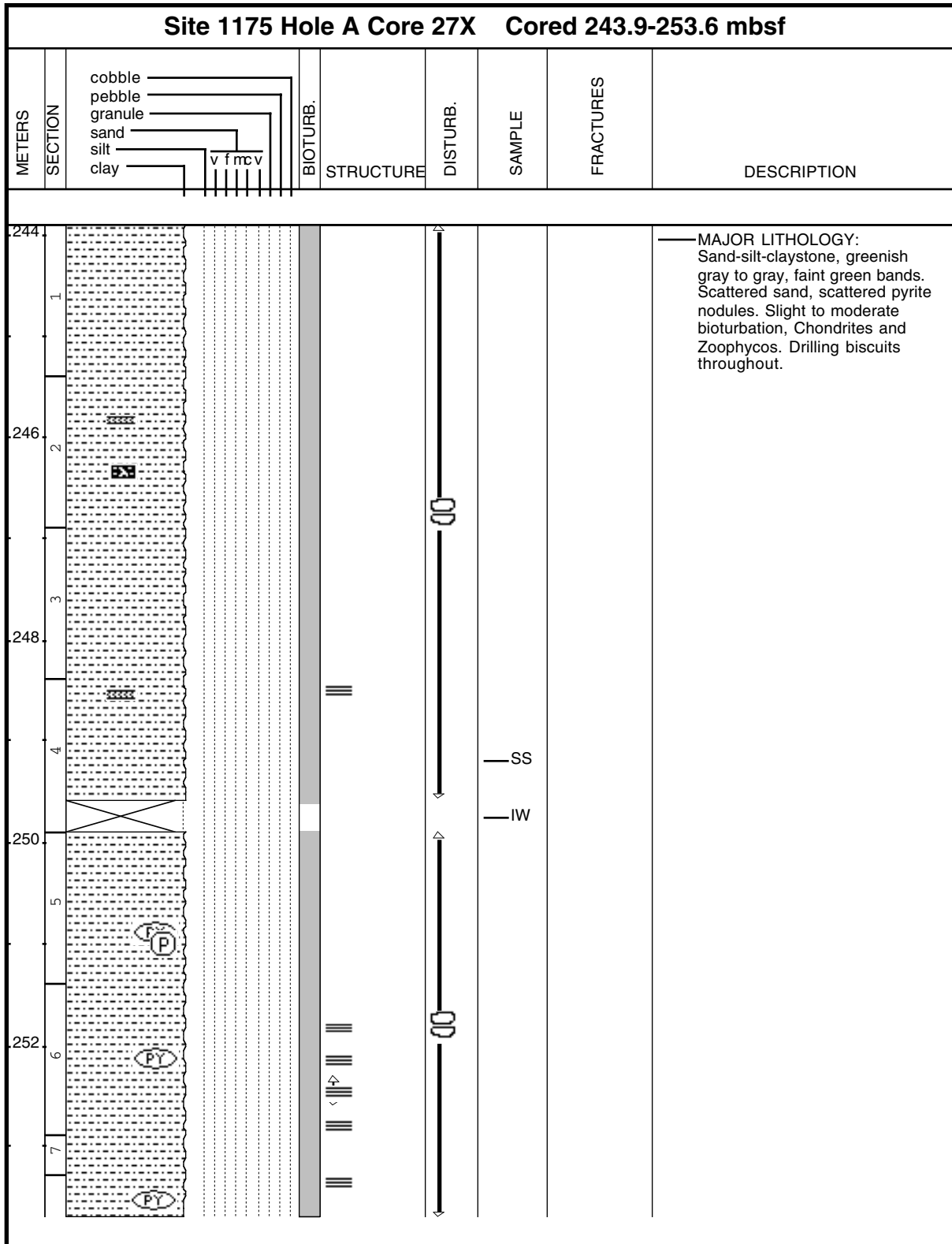




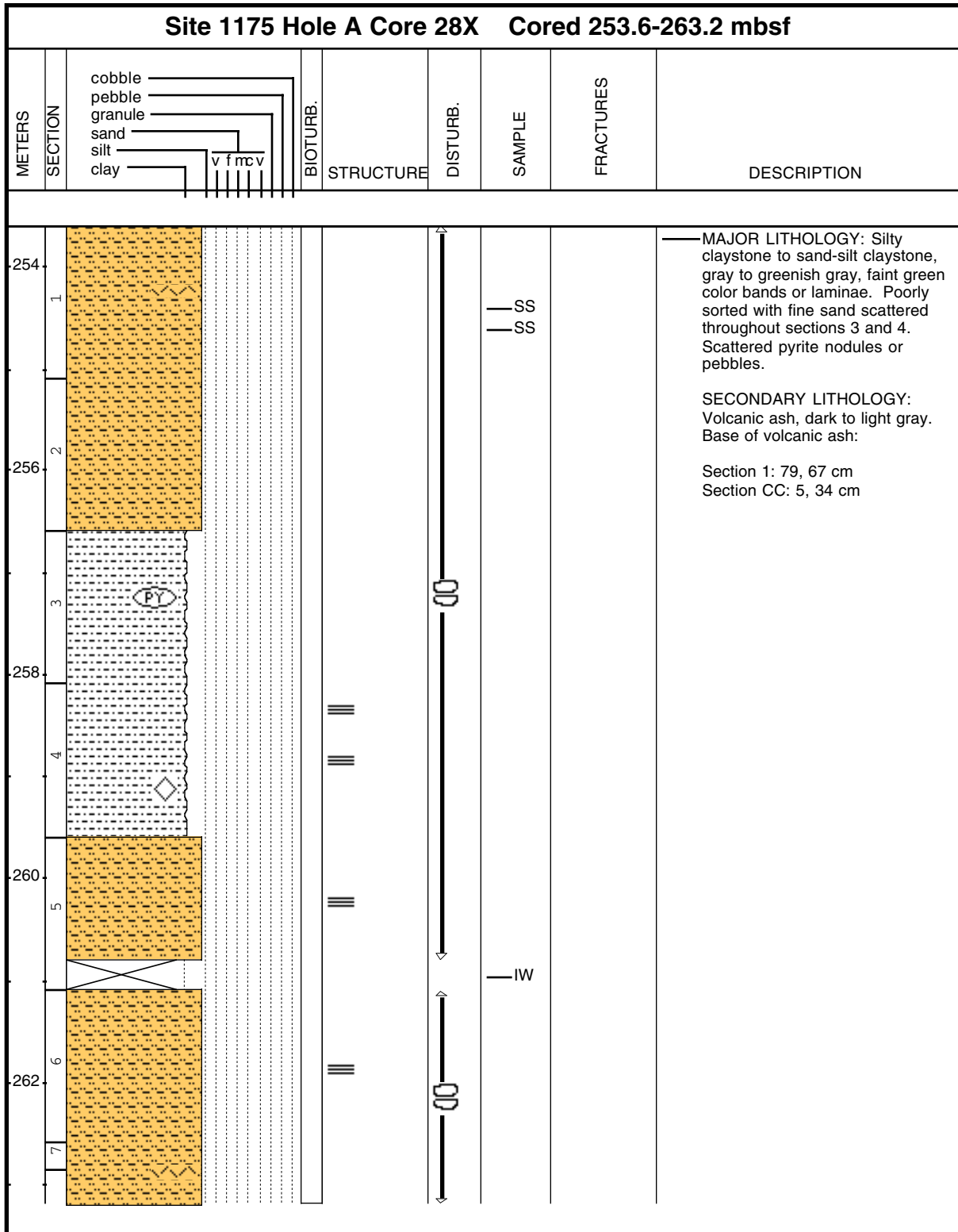
Core Photo



Core Photo

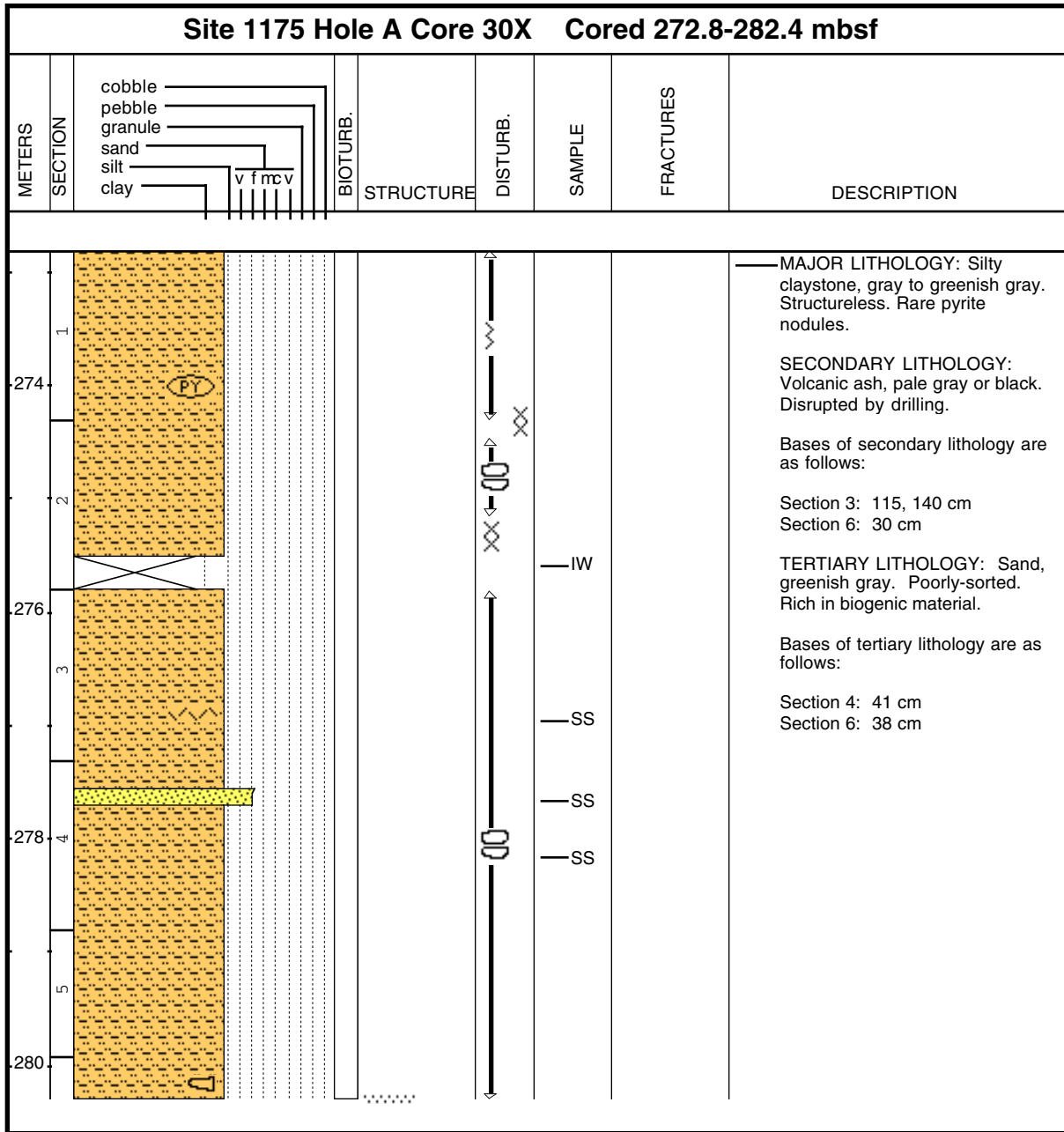


Core Photo

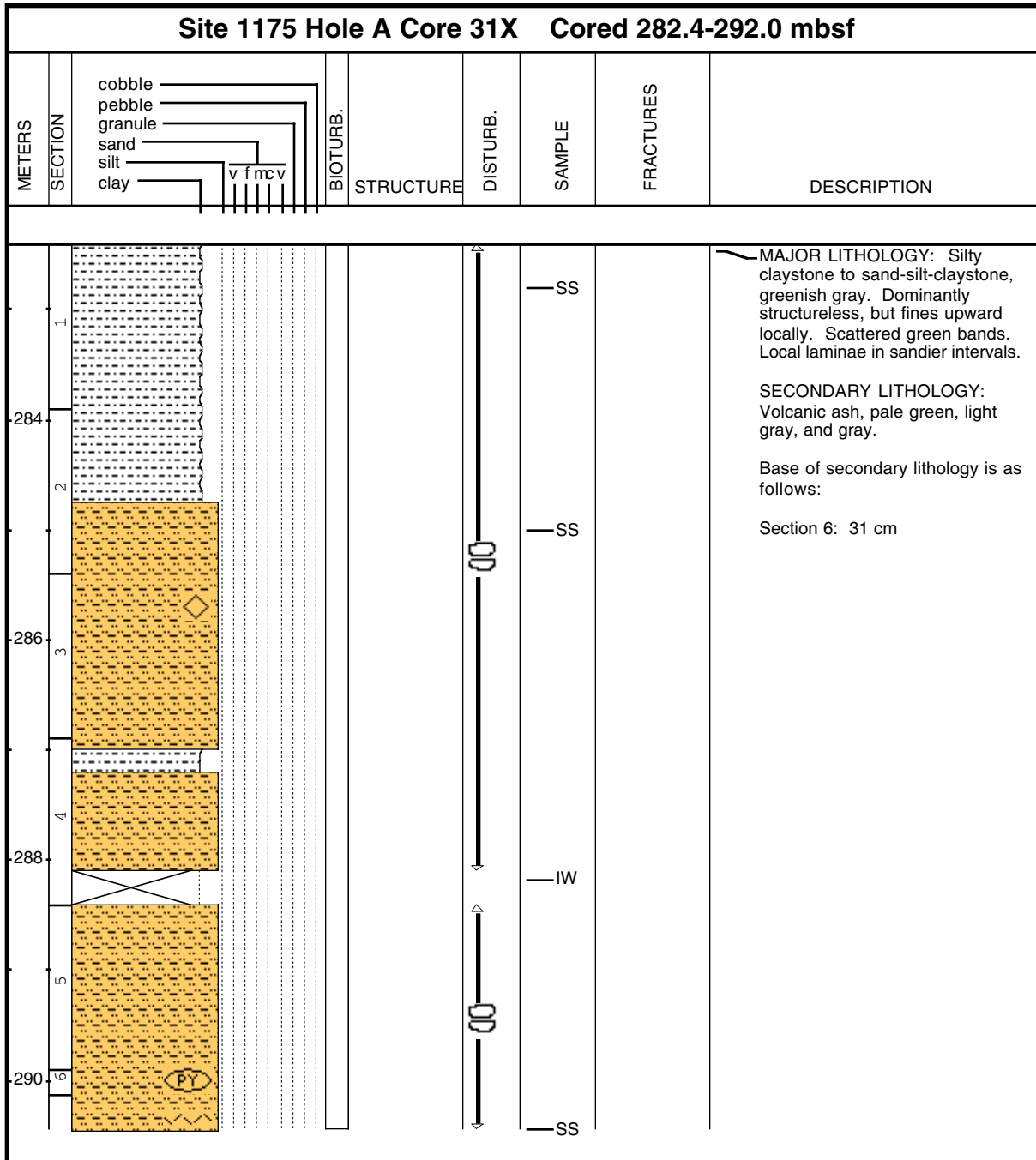




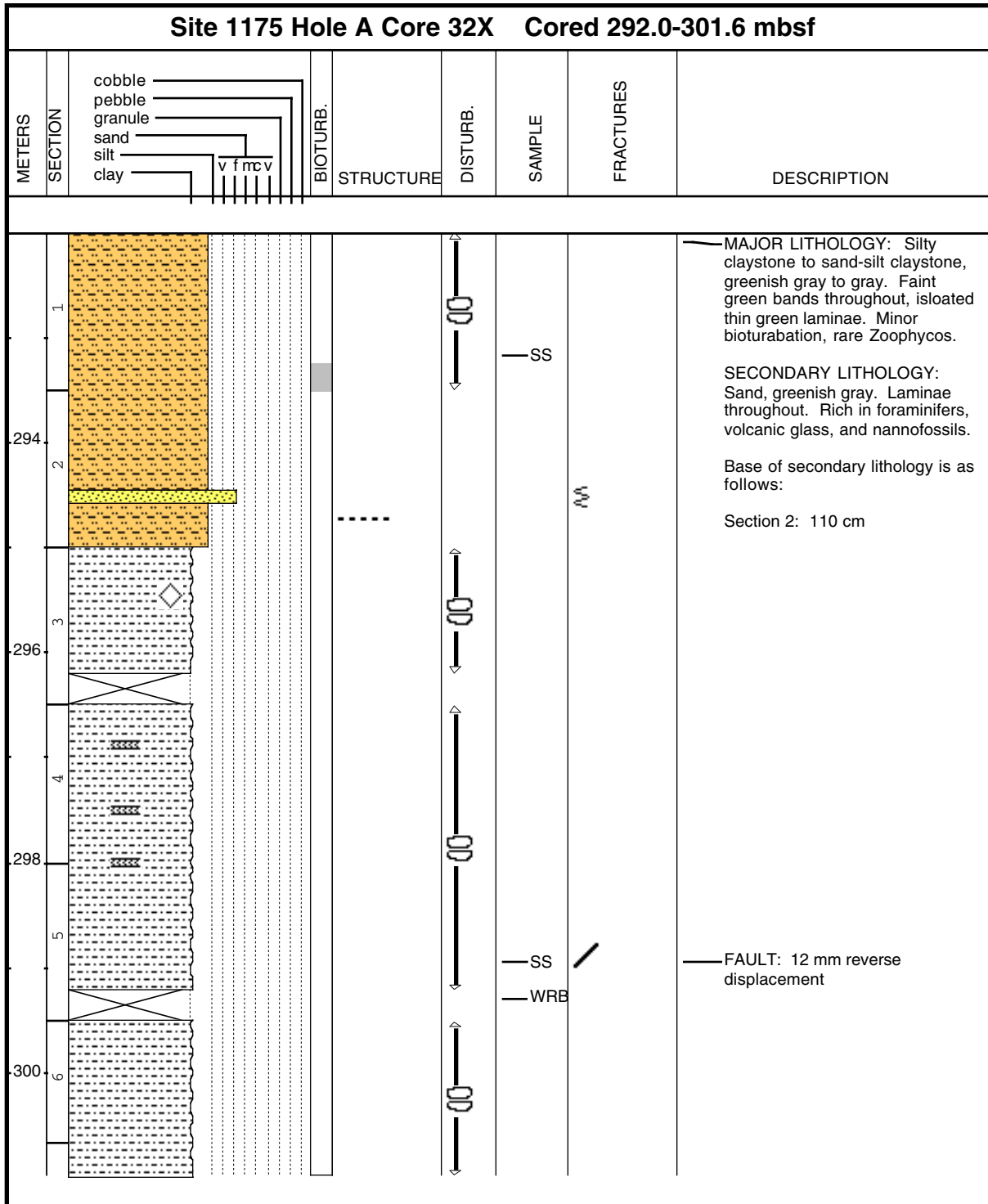
**Core Photo**



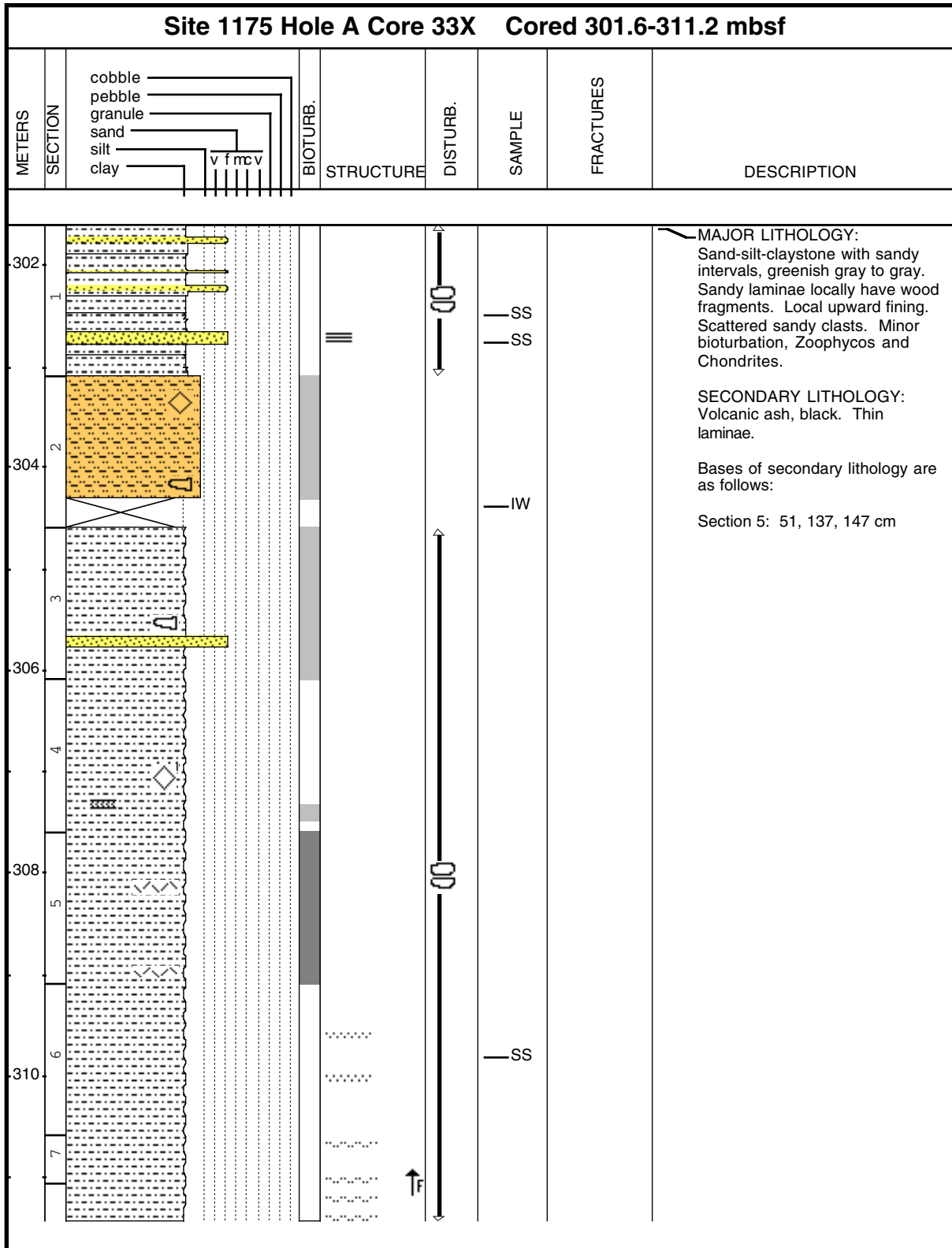
Core Photo



**Core Photo**



Core Photo



1175A-34X NO RECOVERY



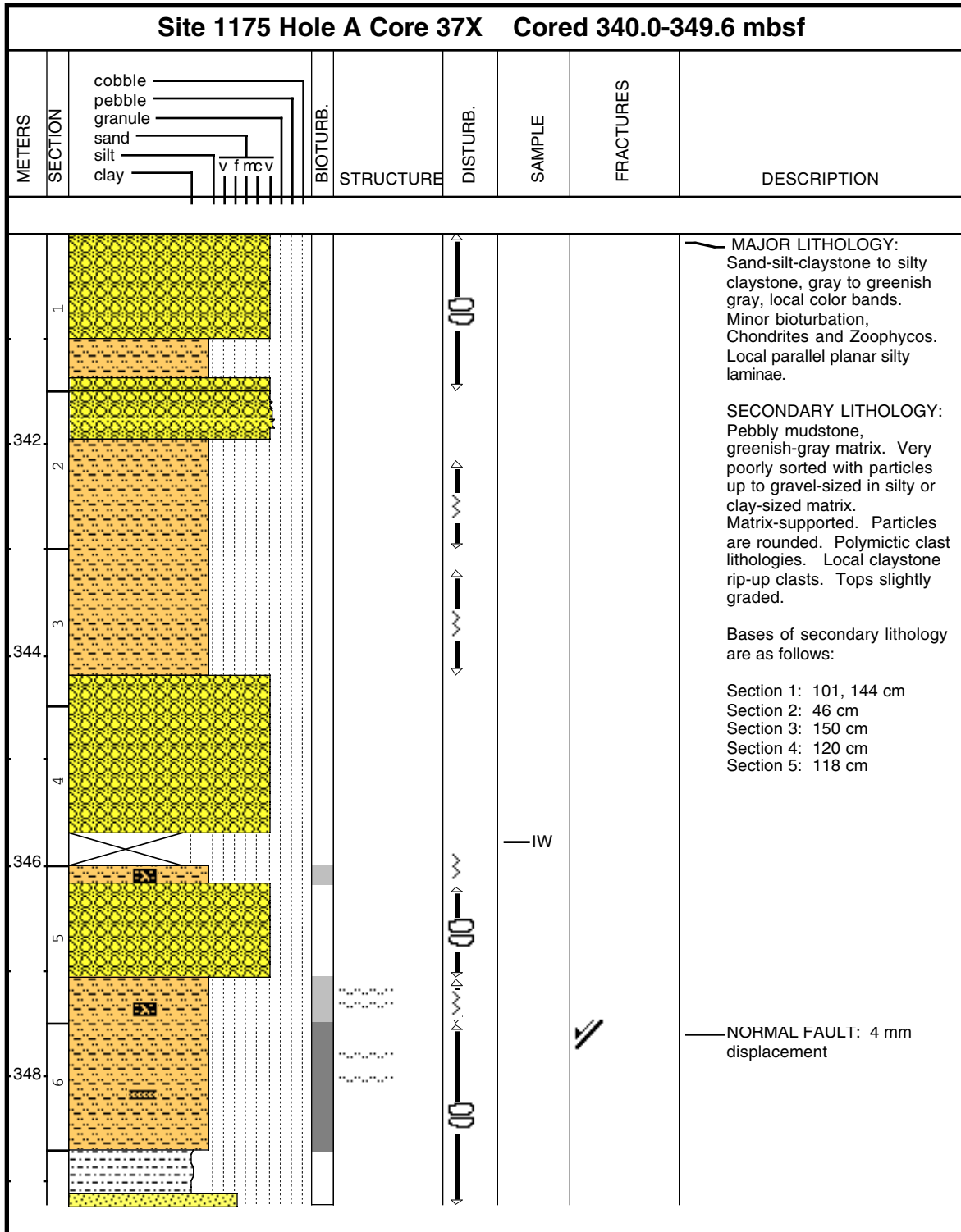
**Core Photo**

Site 1175 Hole A Core 35X Cored 320.8-330.4 mbsf								
METERS	SECTION	cobble pebble granule sand silt clay	BIOTURB.	STRUCTURE	DISTURB.	SAMPLE	FRACTURES	DESCRIPTION
								MAJOR LITHOLOGY: Slurry, greenish gray. Grain sizes sand-silt-clay.

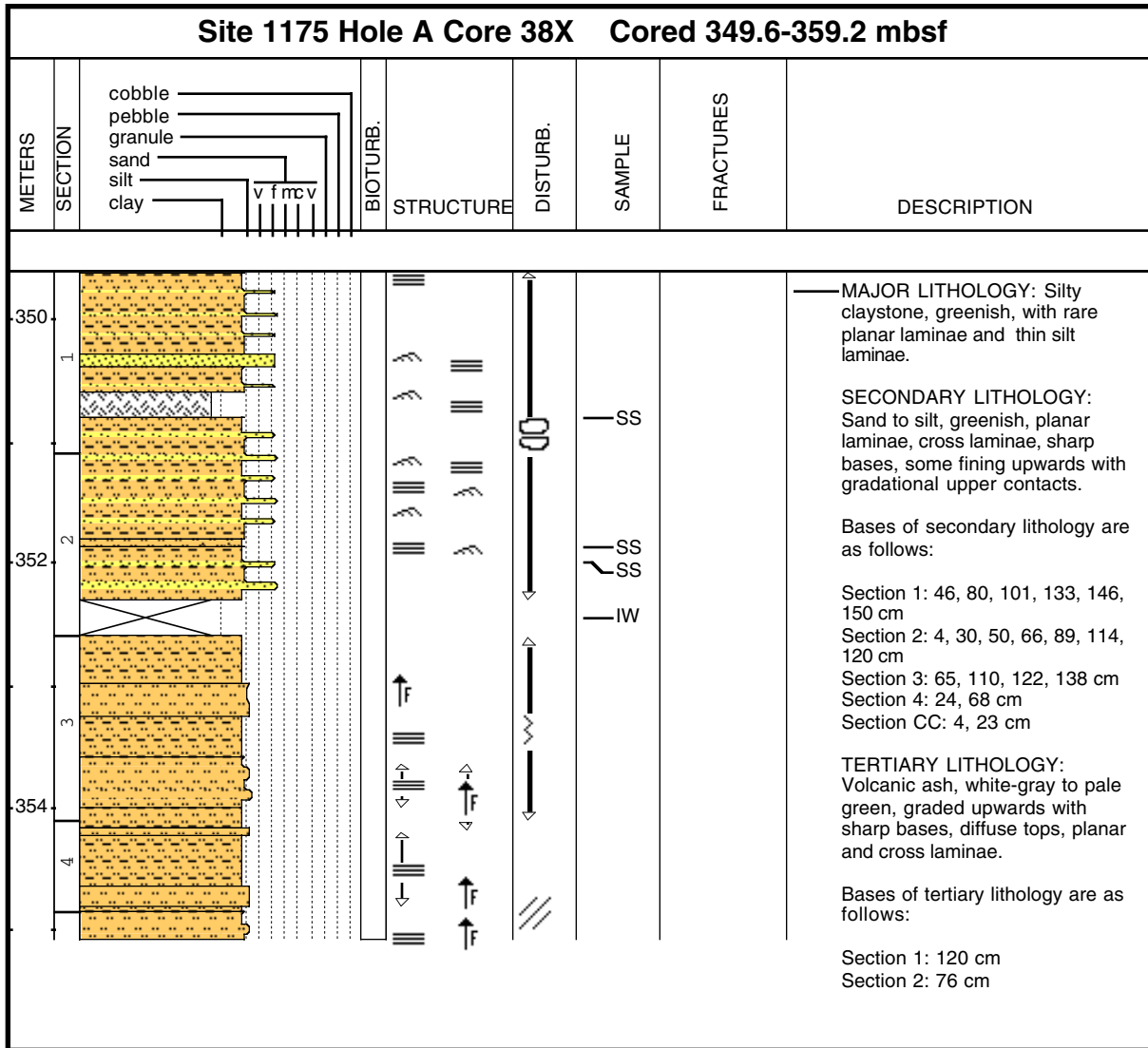
**Core Photo**

Site 1175 Hole A Core 36X Cored 330.4-340.0 mbsf								
METERS	SECTION		BIOTURB.	STRUCTURE	DISTURB.	SAMPLE	FRACTURES	DESCRIPTION
1		cobble pebble granule sand silt clay						MAJOR LITHOLOGY: Sand-silt-claystone, greenish gray. Structureless. Dark gray sandy laminae at 4-6 cm and 23-26 cm.

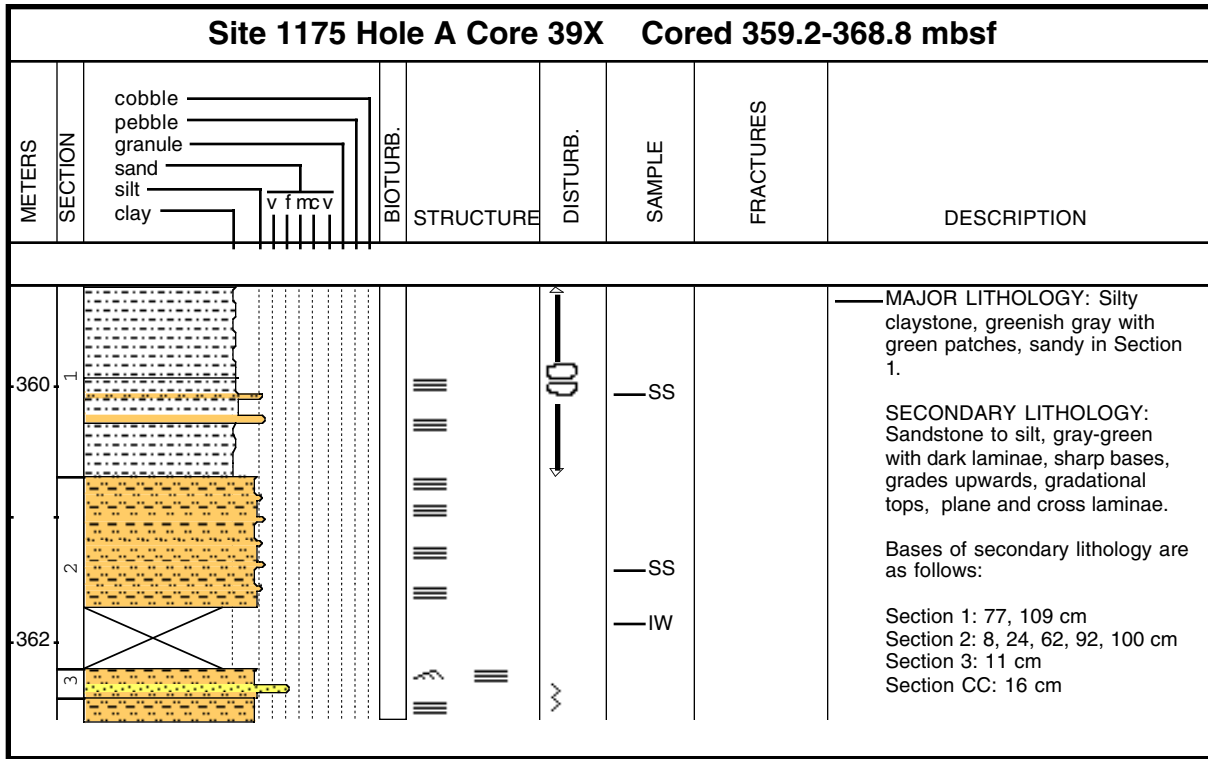
Core Photo



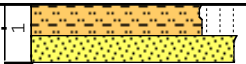
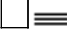


Core Photo



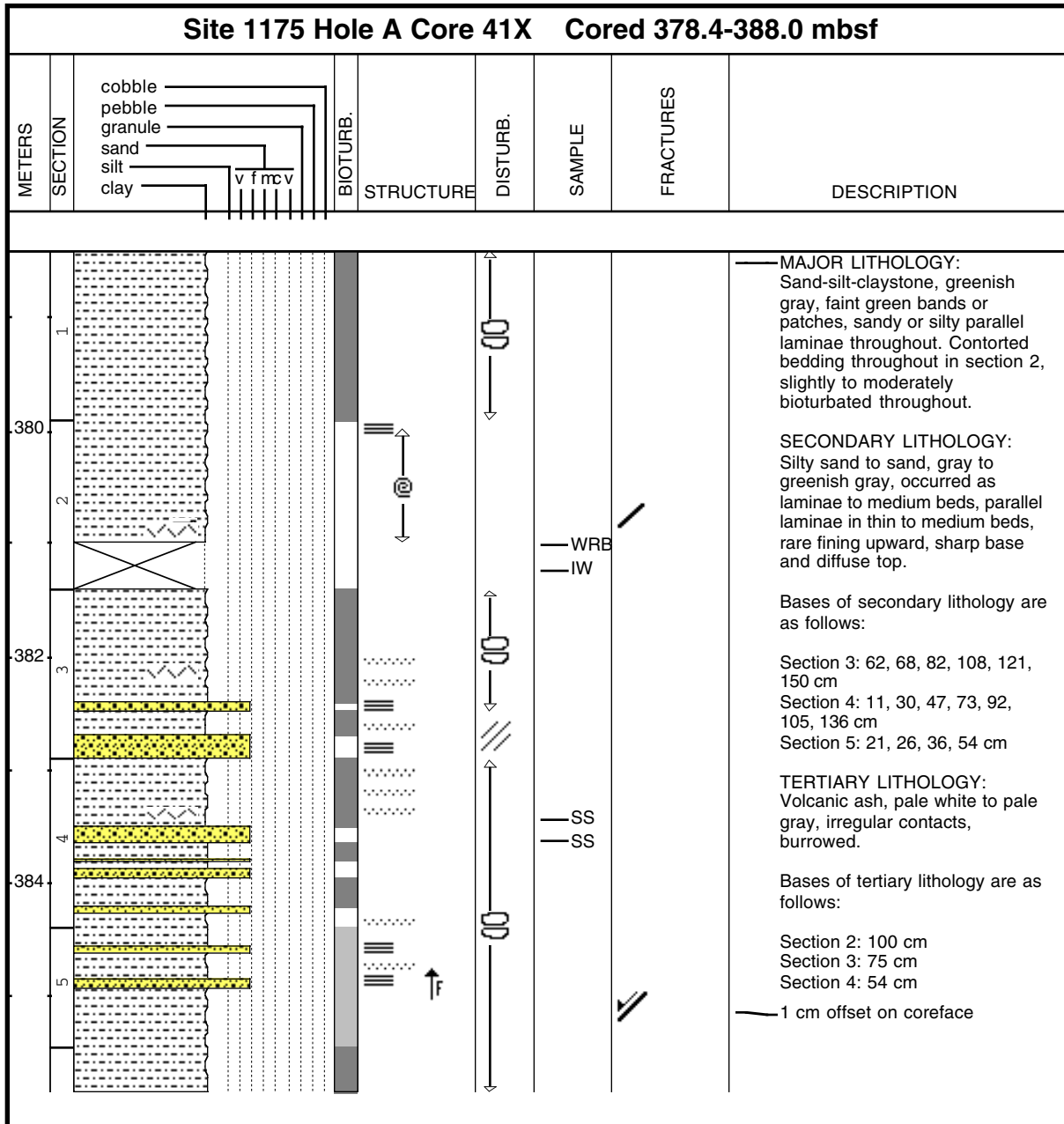
**Core Photo**



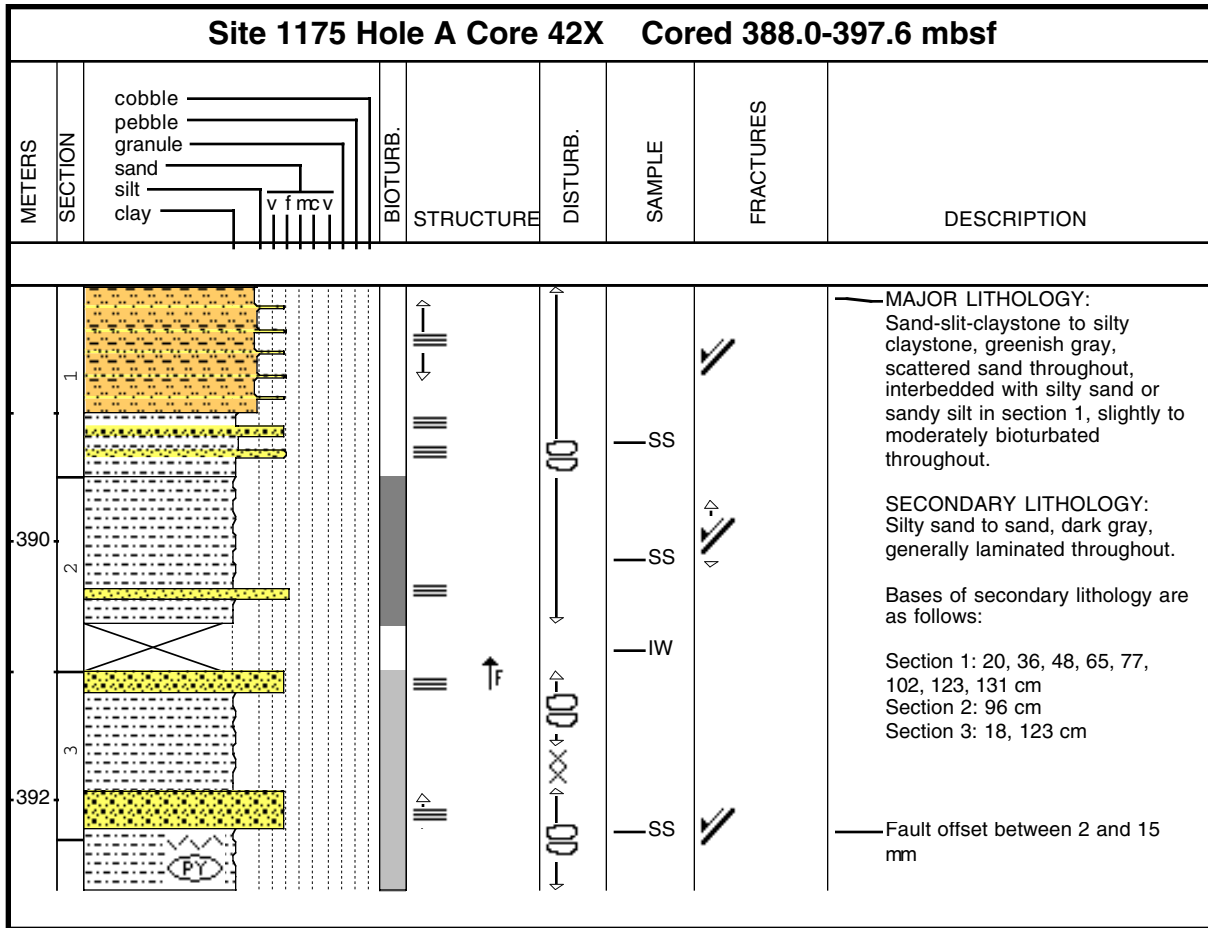
**Core Photo**

Site 1175 Hole A Core 40X Cored 368.8-378.4 mbsf								
METERS	SECTION		BIOTURB.	STRUCTURE	DISTURB.	SAMPLE	FRACTURES	DESCRIPTION
		cobble pebble granule sand silt clay						
		v f mc v						
1						—SS		<p>MAJOR LITHOLOGY: Silty claystone, greenish gray.</p> <p>SECONDARY LITHOLOGY: Sand, gray-green, plant material near top, plane laminae.</p>

Core Photo

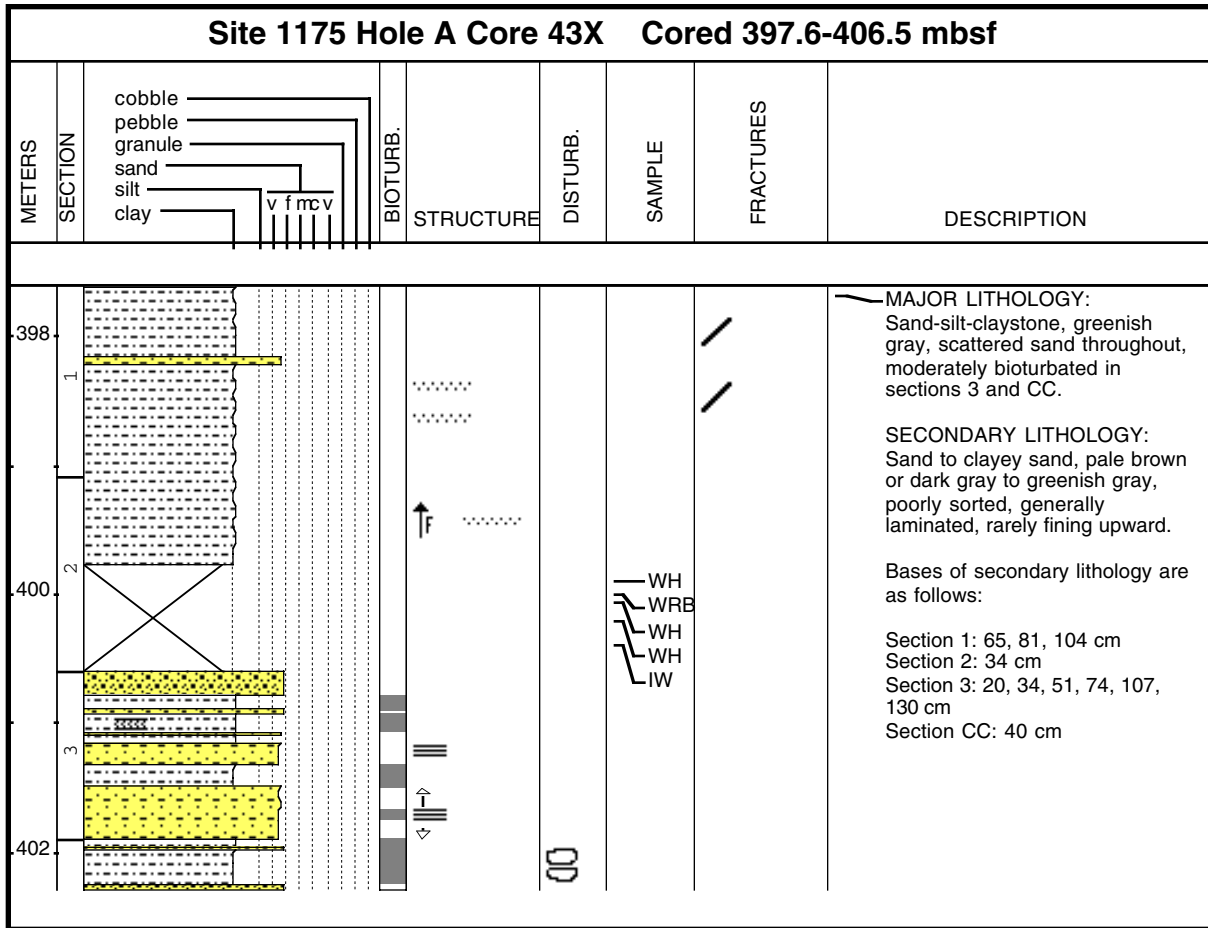


Core Photo

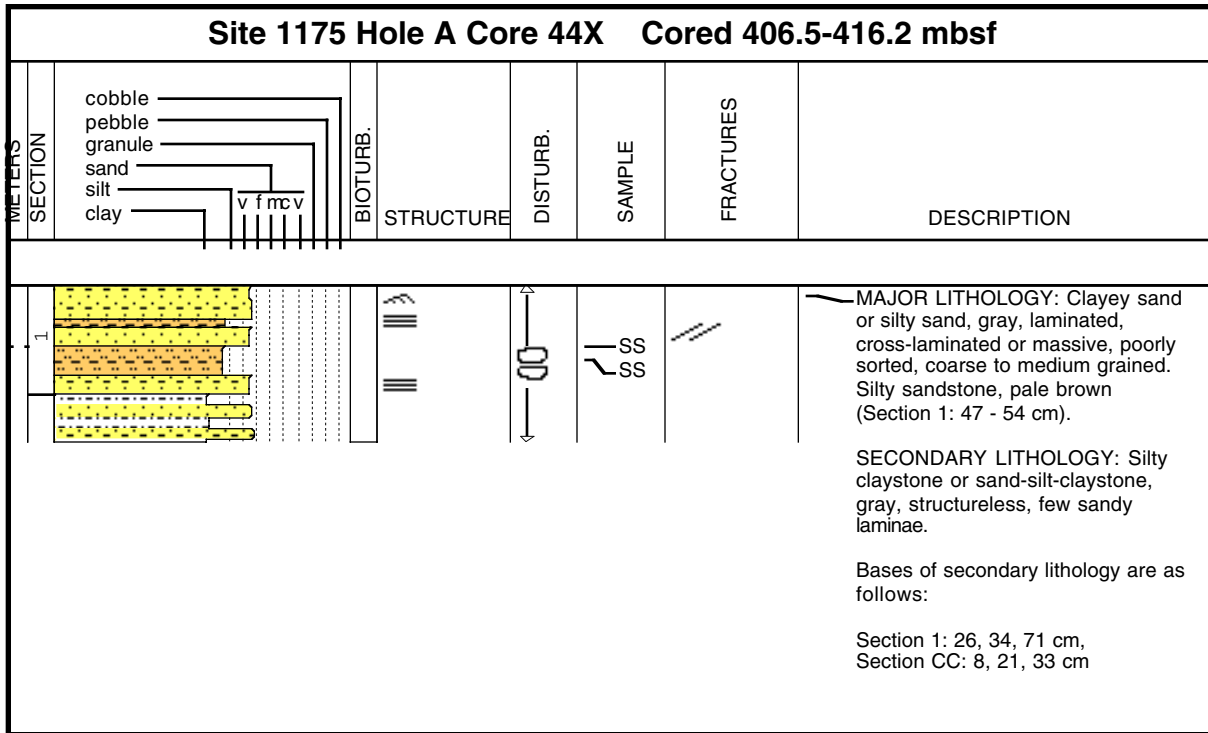




**Core Photo**



**Core Photo**


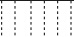


1175A-45X NO RECOVERY

**Core Photo**

Site 1175 Hole A Core 46X Cored 425.8-435.4 mbsf								
METERS	SECTION		BIOTURB.	STRUCTURE	DISTURB.	SAMPLE	FRACTURES	DESCRIPTION
		cobble pebble granule sand silt clay						
		v f mc v 						
								MAJOR LITHOLOGY: Sand-silt-claystone, dark gray to medium gray  SECONDARY LITHOLOGY: Silty sand laminae few mm thick, poorly sorted, rounded and angular clasts.

**Core Photo**

Site 1175 Hole A Core 47X Cored 435.4-445.0 mbsf								
METERS	SECTION	cobble pebble granule sand silt clay	BIOTURB.	STRUCTURE	DISTURB.	SAMPLE	FRACTURES	DESCRIPTION
1								<p>MAJOR LITHOLOGY: Silty sand, gray, medium to coarse, poorly sorted, laminated.</p> <p>SECONDARY LITHOLOGY: Sand-silt-claystone, gray.</p> <p>Base of secondary lithology:</p> <p>Section CC: 14 cm</p>



Sample	Texture						Mineral										Biogenic							Rock	Comments					
	Hole	Core	CT	Section	Top (cm)	Depth (mbsf)	Lithology	Sand	Silt	Clay	Accessory Minerals	Carbonate	Clay	Feldspar	Glauconite	Opauques	Quartz	Volcanic Glass	Zeolite	Benthic Forams	Diatoms	Foraminifers	Nannofossils	Radiolarians		Silicoflagellates	Sponge Spicules	Organic debris	Lithic Fragments	
1175																														
A 15	H	3	96	133.26	M		D	A	P				P			P	D			P	R	C	P	P	P			P	Volcanic ash -green	
A 15	H	4	60	134.4	D		A	D				C	P		P		C			C	P	A	P	P	P		C		Silty clay	
A 16	H	3	132	143.12	M		A	D				C				P	P			P	C	D	C	P	P				Nanno ooze	
A 16	H	5	50	145.3	D		A	D				A			R	P	C			P	P	A	P	P	P		P		Silty clay - nanno ooze	
A 17	H	1	95	149.25	D		C	D				C	P			P				P		D	P		P				Silty clay - nanno ooze	
A 17	H	1	106	149.36	M	P	D	A					P		R	P	D					C	P						Volcanic ash	
A 18	H	1	110	158.9	D		A	D				A	P		R		P			P	P	D	C		P				Silty clay - nanno ooze	
A 19	H	6	8	174.88	M		C	D			P	P				P	P			C		D	P		C				Nanno-rich silty clay	
A 19	H	6	37	175.17	D		A	D								C	P			P		D	P		P				Nanno-rich silty clay	
A 20	H	1	85	177.65	M	A	D	C					P		P	P	D					P								Volcanic ash - gray
A 20	H	2	125	179.55	D		A	D				C				P	P			P	P	D	P		P					Silty clay - nanno ooze
A 21	H	3	17	189.47	M	C	D	C	R				C			C	P			P	C	A	P		P		P			Silt - ash (grey)
A 21	H	4	40	191.2	D		A	D					P			C				P		D	P		P					Silty clay - nannofossil rich
A 21	H	4	67	191.47	M		D	A	P			C			R	P	D													Volcanic ash - white to gray
A 22	H	5	66	202.46	D	C	A	D				C				C	P			P	R	A		P	P		P			Silty clay / nannofossil ooze
A 23	X	1	100	206.3	D	P	C	D		R	C				P	P	P			P	R	A		P	R		P			Silty clay rich in nannofossils
A 23	X	2	113	207.93	D	P	C	D		P	C				P		P			R		D		P	P					Nannofossil ooze
A 23	X	3	120	209.5	D	C	A	D				C	P			C	C			P	P	A			*		P			Silty clay rich in nannofossils
A 23	X	CC	18	214.69	M	D	C	A		P						P	A					A			*					Volcanic ash with nannofossils
A 25	X	3	18	227.78	M	D	C	C					P			C	D					C								Volcanic ash
A 25	X	3	113	228.73	D	C	A	D		P	A					C	P			P	P	A		R	P					Silty clay
A 26	X	1	45	234.75	D	C	C	D	*	R	A	P				C	C	R		R	R	A	*		P					Sand-silt-clay
A 26	X	5	51	240.81	M	C	C	D		P	A			*		A				R		A								Volcanic ash
A 27	X	4	77	249.17	D	C	A	D		P	A	*		*	P	C		*		P	R	A			C					Sand-silt-clay
A 28	X	1	78	254.38	M	C	D	A	*	R	C	P				P	D					P								Volcanic ash - white to gray
A 28	X	1	100	254.6	D		A	D	R	P	A	P				P	P				*	A					P			Silty claystone - nannofossil rich
A 29	X	1	41	263.61	M	D	P	C				P			R	P	D			R		P								Volcanic ash
A 30	X	3	112	276.92	M	D	A	C	P			A			P	A	P					R								Volcanic ash - black
A 30	X	4	85	278.15	D		A	D				A			R	P	P			P	P	A	R	P	P		P			Silty claystone - nannofossils
A 30	X	4	36	277.66	M	D	A	C					C			C	C					A	A		P		C			Sand - rich in foraminifers
A 31	X	1	40	282.8	D	A	A	A				C	C			C	C					C	A				C			Sand-silty-claystone
A 31	X	2	110	285	D		A	D				D	P			P						P	A		P		P			Silty claystone
A 31	X	4	28	287.18	M		D	A					P			P	D					P	C							Volcanic ash
A 31	X	CC	30	290.43	M	D	A	C								P	D					P								Volcanic ash - pale green
A 32	X	1	115	293.15	D		A	D				A	P			P				P	P	A	P		P		P			Silty claystone
A 32	X	2	101	294.51	M	D	A	A								P	A			R	A	A								Sandstone
A 32	X	5	93	298.93	D	C	A	D				A	P			P						C	A		P		P			Sand-silty-claystone
A 33	X	1	88	302.48	M	D	A	A	P			C	C			C						C				A				Sand
A 33	X	1	116	302.76	M	D	A	A				C	C			C	P					A	C							Sand
A 33	X	6	70	309.8	D	C	A	D	P			A	P			P	P			P	C	A								Sand-silty-claystone
A 36	X	CC	25	330.65	M	D	A	C	P			C	A			A						P					C			Sandstone
A 37	X	1	95	340.95	M		A	D					C			C	P				P	A			P					Matrix in conglomerate
A 37	X	1	117	341.17	D		A	D				A	P			P	P			P	P	A			P					Silty clay
A 38	X	1	121	350.81	D	C	A	A	P			D				P	P			R		P			P					Silty clay
A 38	X	2	76	351.86	M	C	D				P	P	P			P	D					P								Volcanic glass
A 38	X	2	87	351.97	M	A	D	C			A	P	P		R	A						*								Sand/sandy silt
A 39	X	1	84	360.04	M	C	D	P				A				P	D					*								Volcanic glass/clay
A 39	X	2	70	361.4	D	C	D	C			C	D	P			P	C					P								Clayey silt
A 40	X	CC	37	369.17	M	A	A	C			A	A			P	C	C					R								Sandy silt
A 41	X	4	52	383.42	M	D	C	C				A	C			C	A					R								Volcanic ash

Sample						Texture			Mineral										Biogenic							Rock	Comments		
Hole	Core	CT	Section	Top (cm)	Depth (mbsf)	Lithology	Sand	Silt	Clay	Accessory Minerals	Carbonate	Clay	Feldspar	Glauconite	Opakes	Quartz	Volcanic Glass	Zeolite	Benthic Forams	Diatoms	Foraminifers	Nannofossils	Radiolarians	Silicoflagellates	Sponge Spicules	Organic debris		Lithic Fragments	
1175																													
A	41	X	4	71	383.61	M	D	C							P	A	P				R						A		Sandstone
A	42	X	1	119	389.19	M	D	C	C			C	P	P	C	A	C											A	Silty sand
A	42	X	2	61	390.11	D	A	A	A		P	A				C	P	P										C	Sand-Silt-claystone
A	42	X	3	123	392.23	M	D	A			P	A			P	C	D											P	Volcanic ash
A	42	X	3	62	391.62	D	D	C	C			C	P	*	P	A												A	Clayey sand
A	43	X	CC	21	402.12	D	C	A	D		P	D			R	C	P											C	Sand-silt-clay
A	44	X	1	48	406.98	M	D	A				C	P			C	P											D	Silty sand
A	44	X	1	56	407.06	M	C	A	D			D			P	C	P					P						C	Silty claystone
A	46	X	CC	2	425.82	D	D	A	C			C	C			C						P						D	Sandstone
A	46	X	CC	1	425.81	D		A	D			A	P			A		P										C	Clayey siltstone

Sample							Texture			Mineral										Biogenic							Rock					Comments
Hole	Core	CT	Section	Top (cm)	Depth (mbsf)	Sand	Silt	Clay	Accessory Minerals	Amphibole	Carbonate	Clay	Fe Oxide	Feldspar	Mica	Opalues	Pyrite	Quartz	Volcanic Glass	Diatoms	Foraminifers	Radiolarians	Nannofossils	Plant Debris	Silicoflagellates	Sponge Spicules	Carbonate Grains	Lithoclast	Metamorphic Rock Fragments	Pumice	Volcanic Fragments	
1175																																
A	7	H	4	77	59.97	D	C							C				A											D			Sand - sieved