

125.5-135.0 mbsf

1

2

3

4

5

6

CC

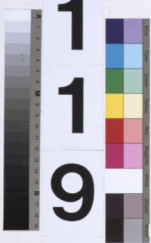
LEG

1
9
4

5
10
15
20
25
30
35
40
45
50
55
60
65
70
75
80
85
90
95
100
105
110
115
120
125
130
135
140
145
150

SITE

1
1
9
2



HOLE

A

CORE

1
6
H

PAL

I
W

