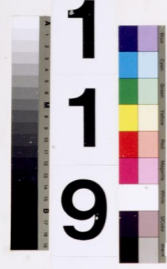


467.7-477.3 mbsf

LEG

1  
9  
4

SITE



1  
1  
9  
5



HOLE

B

CORE

5  
0  
X

5  
10  
15  
20  
25  
30  
35  
40  
45  
50  
55  
60  
65  
70  
75  
80  
85  
90  
95  
100  
105  
110  
115  
120  
125  
130  
135  
140

1

2

CC



I  
W

PAL