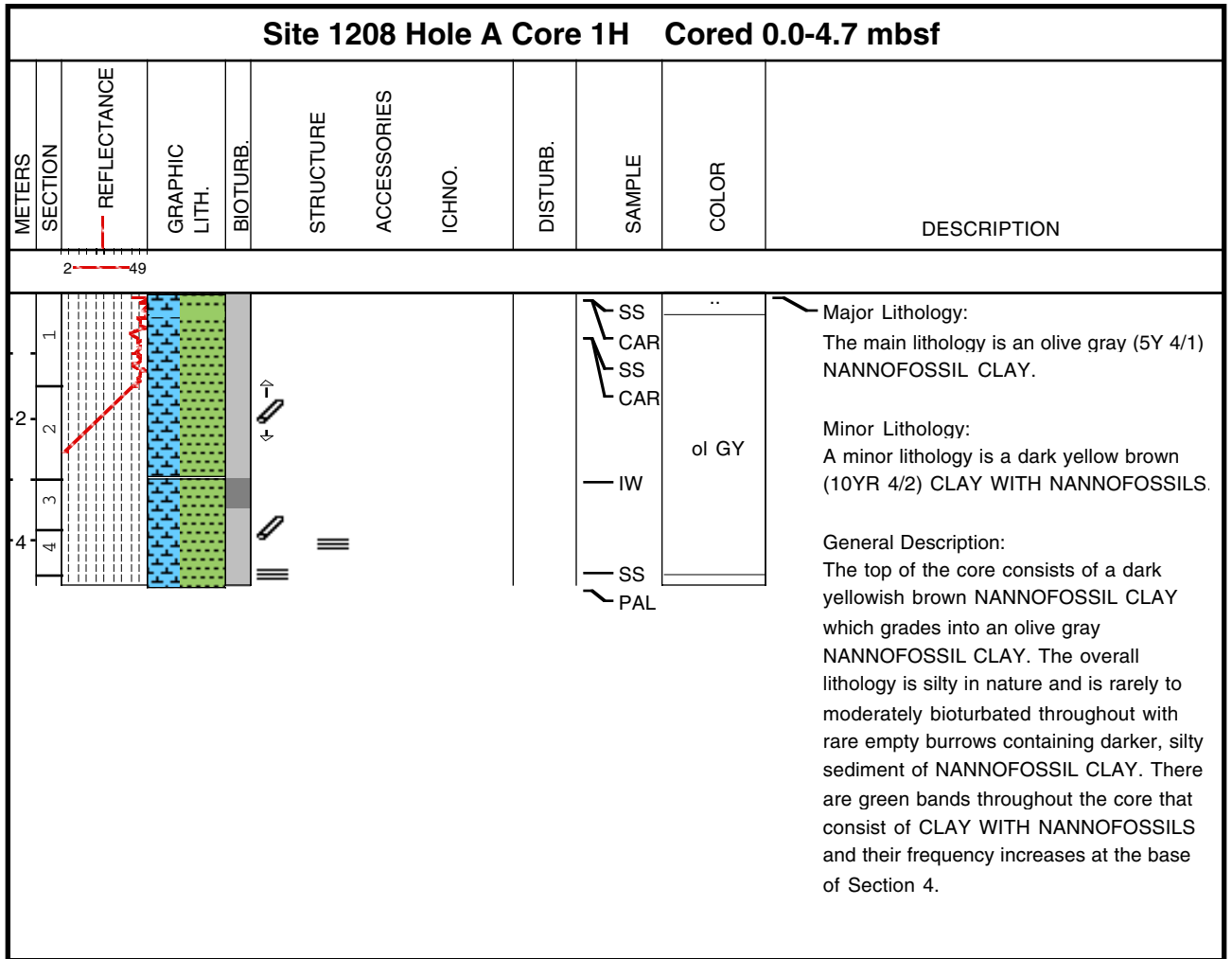
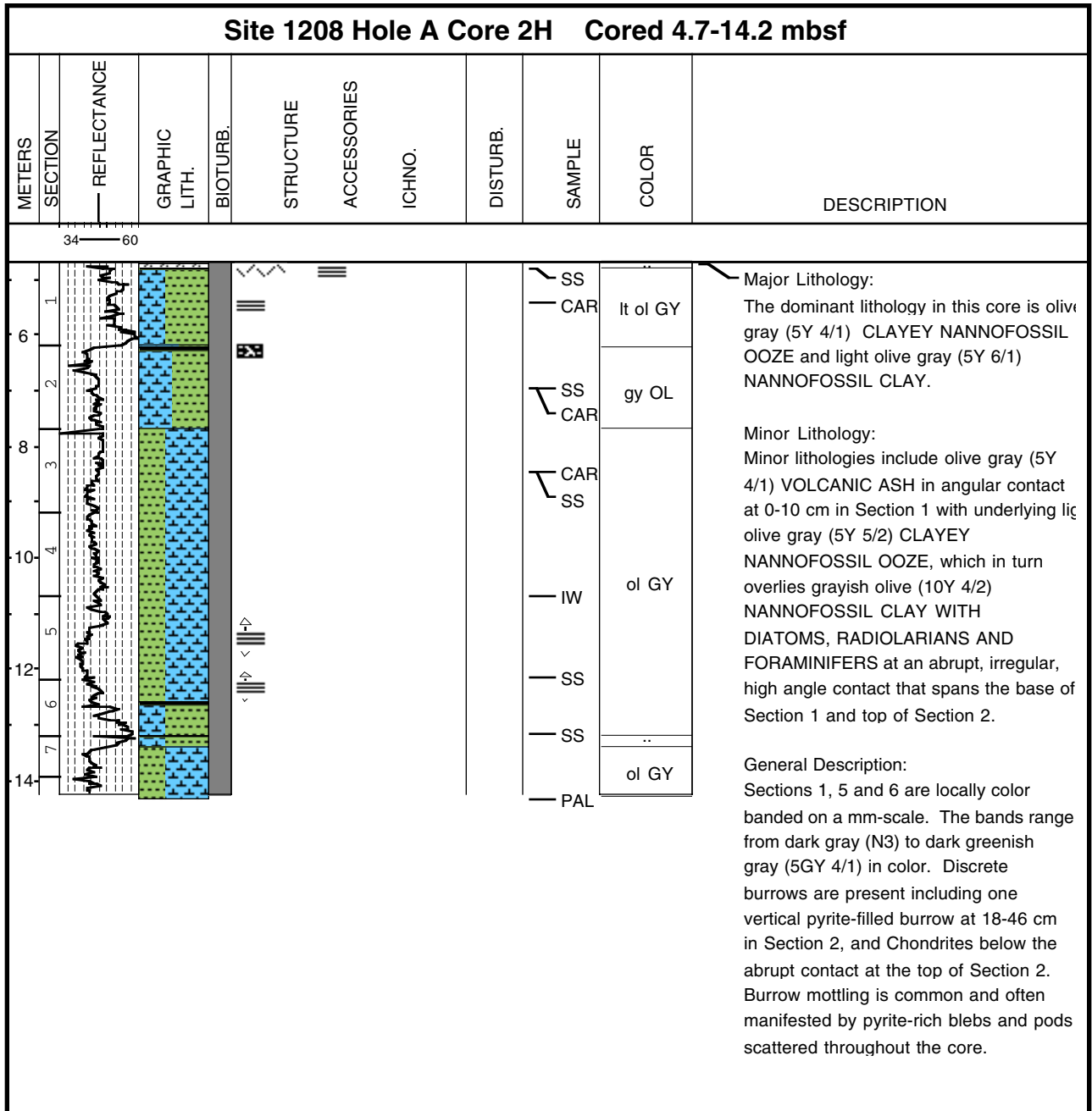


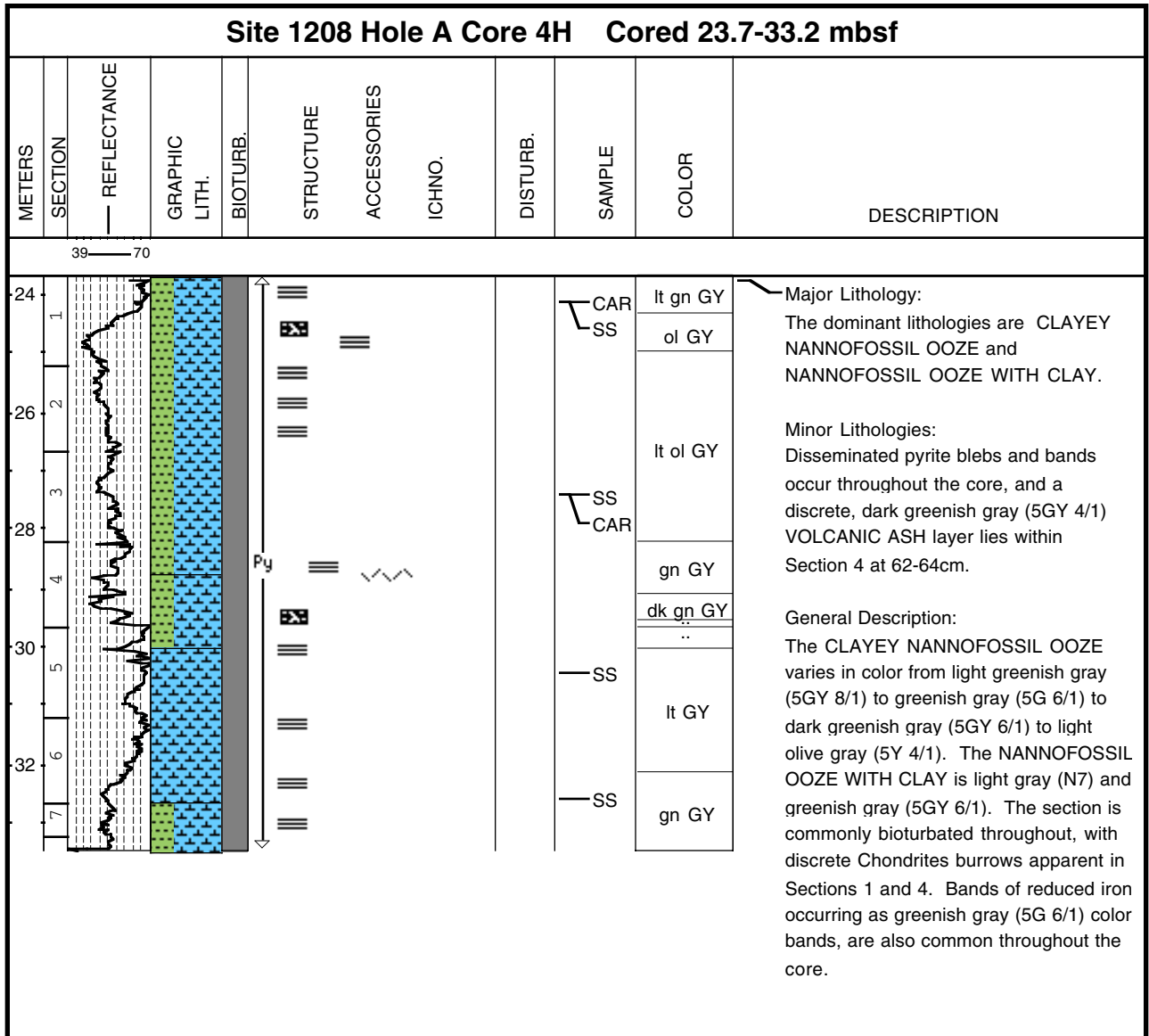
Core Photo



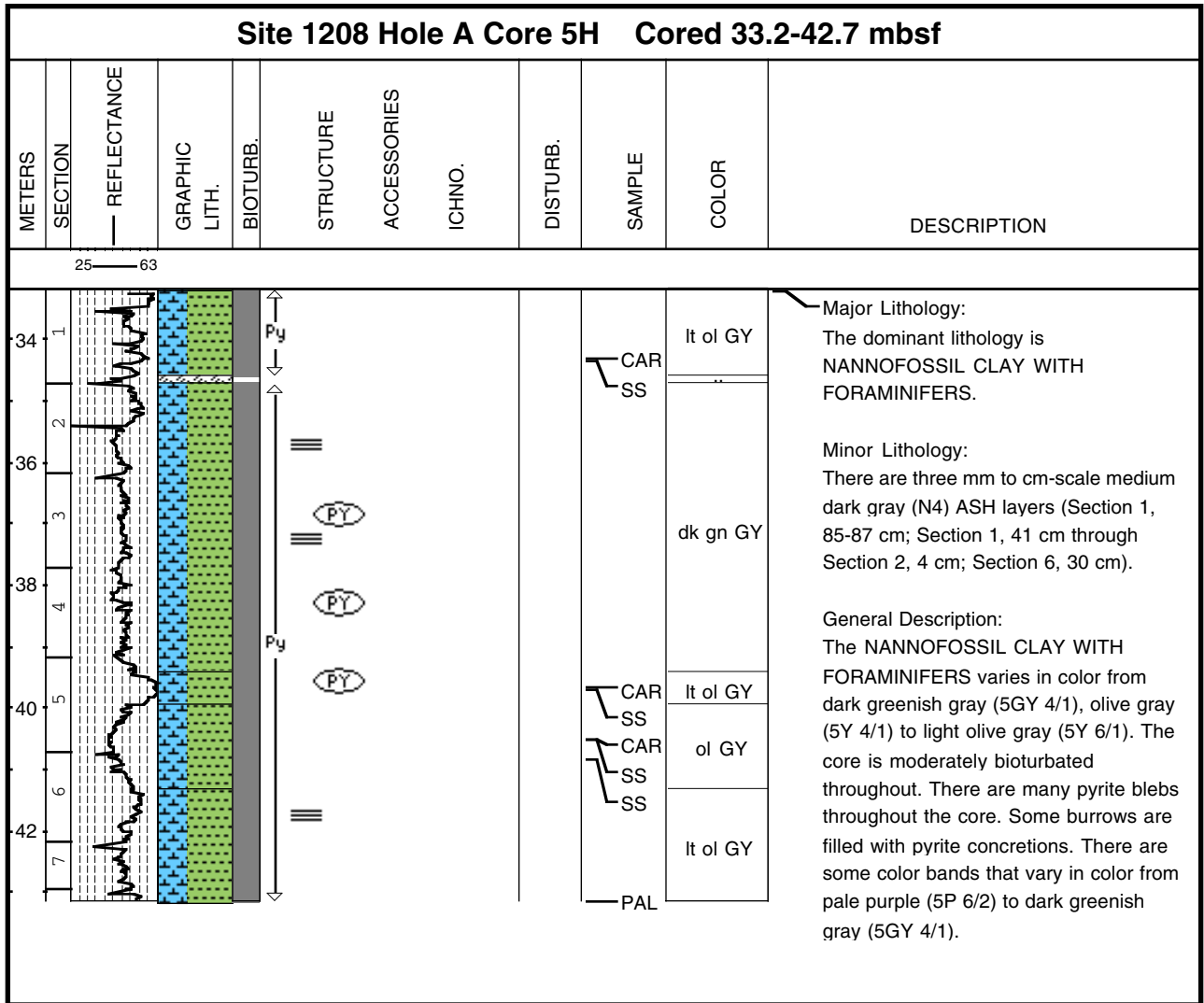
Core Photo



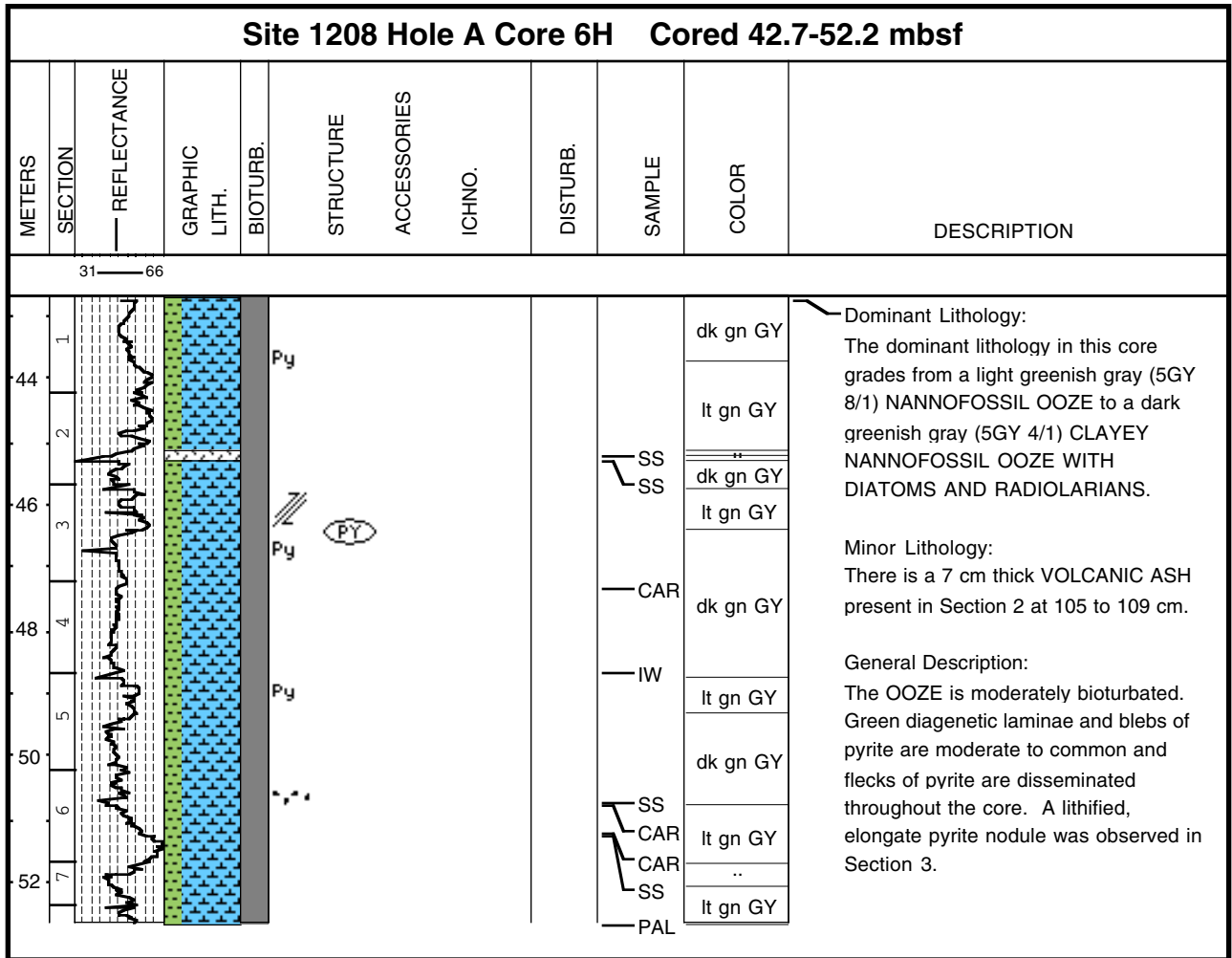
Core Photo



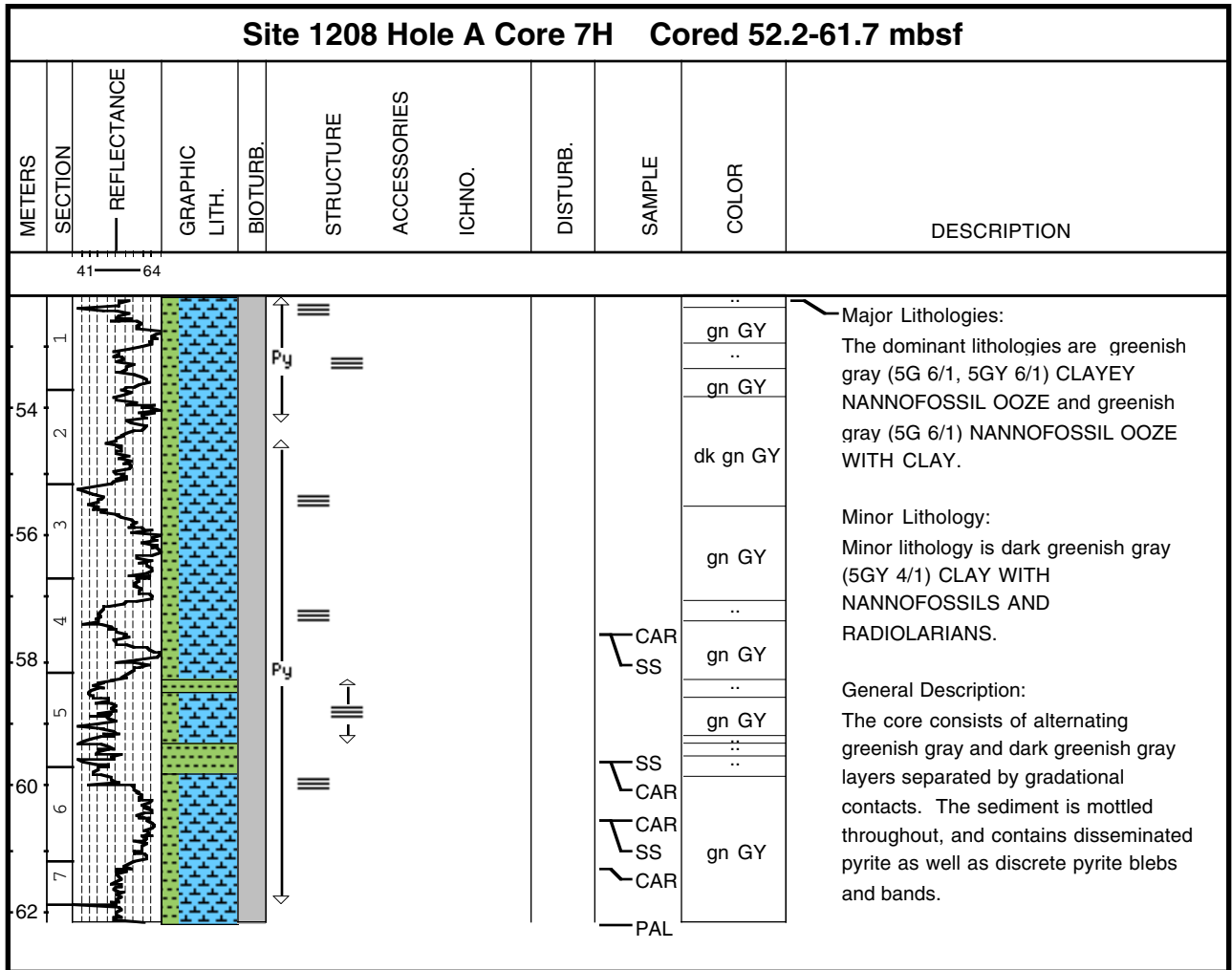
Core Photo



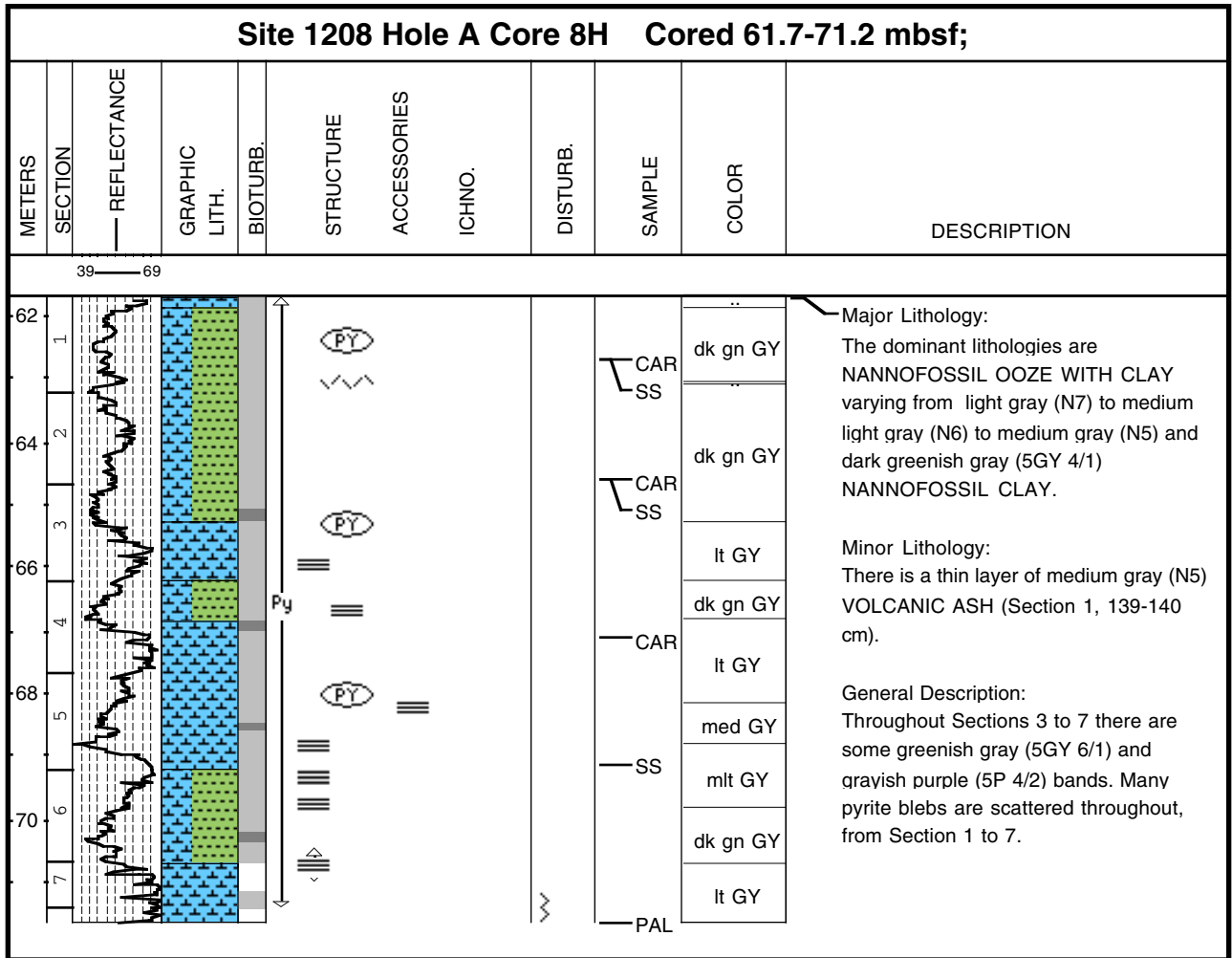
Core Photo



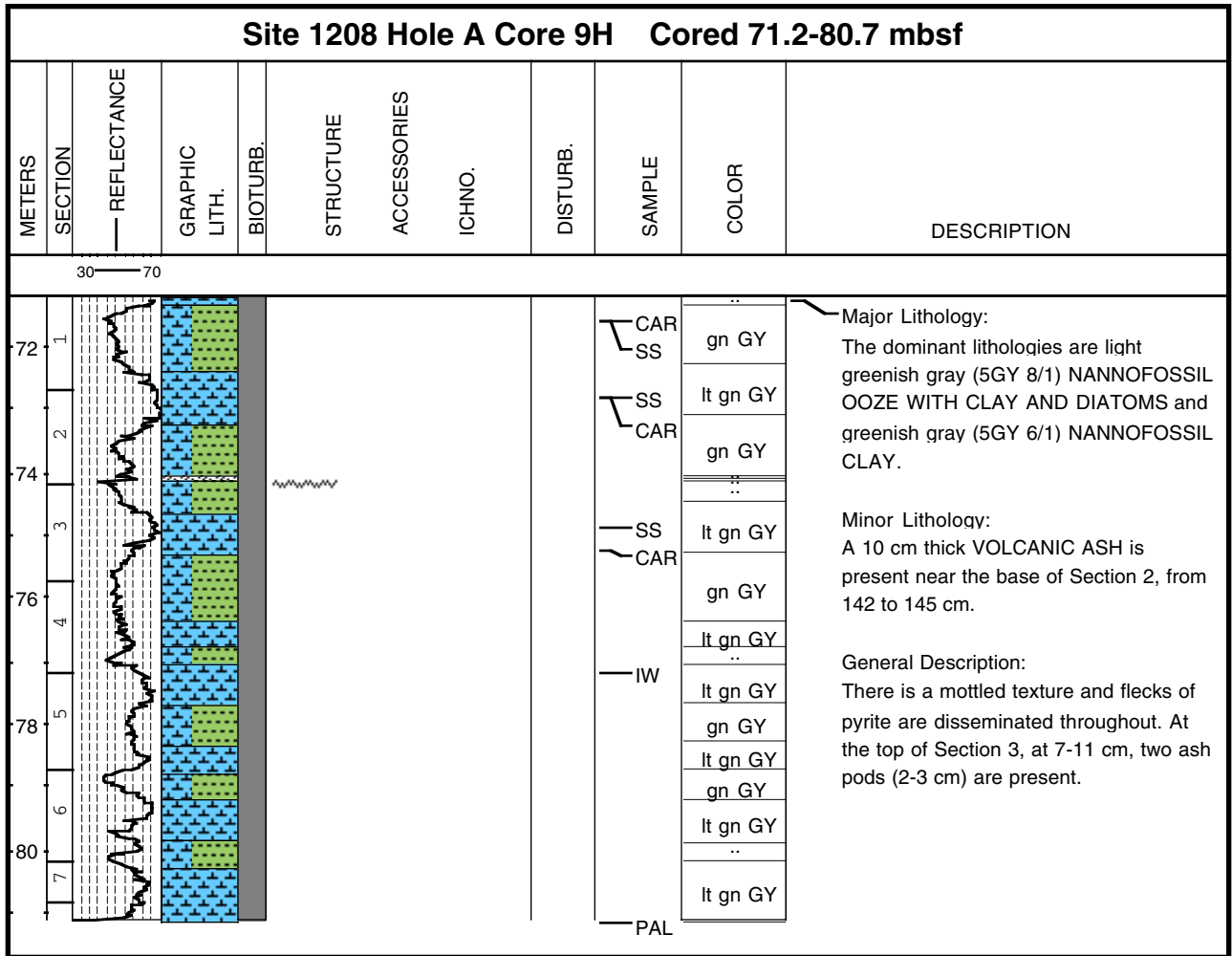
Core Photo



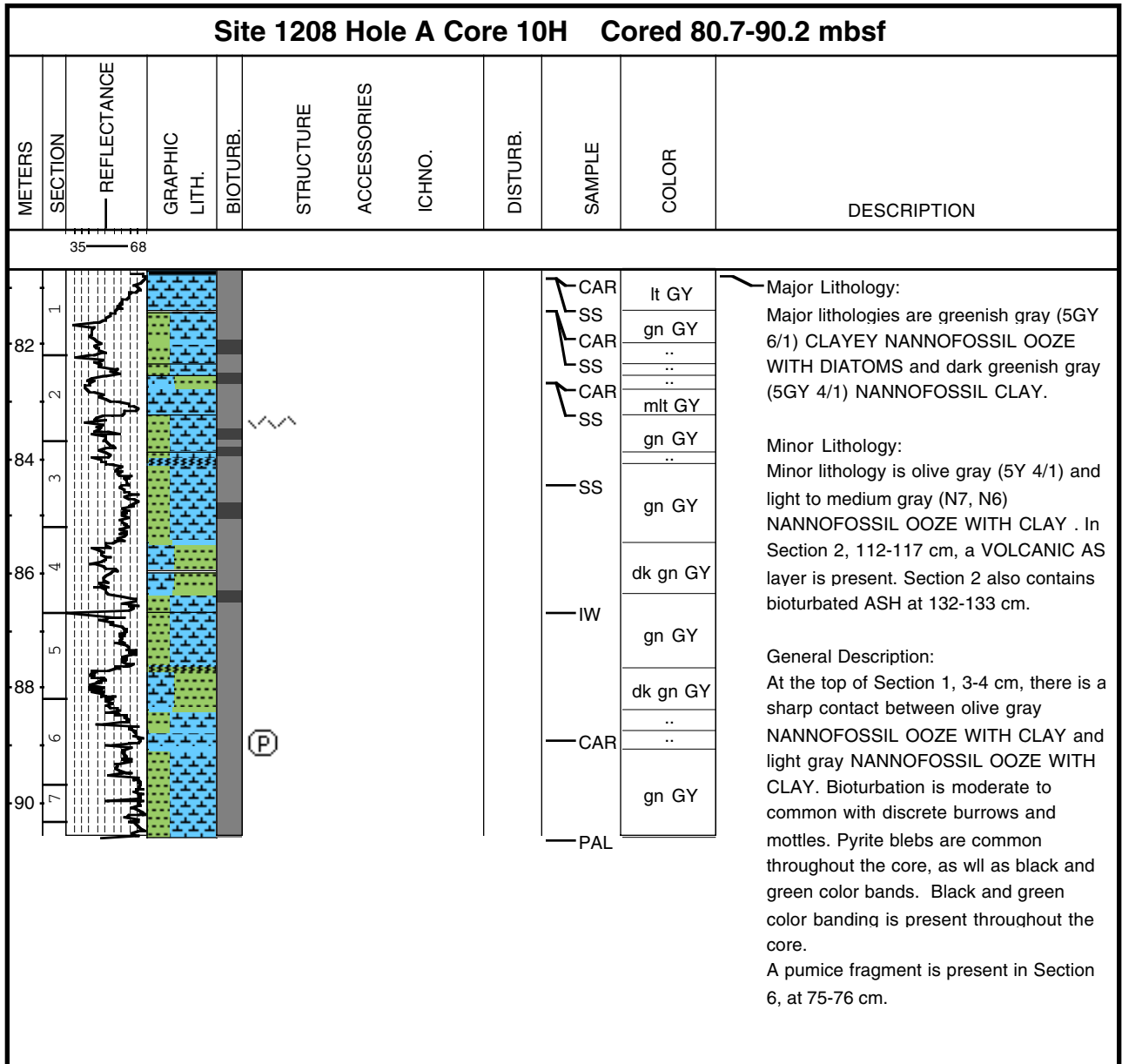
Core Photo



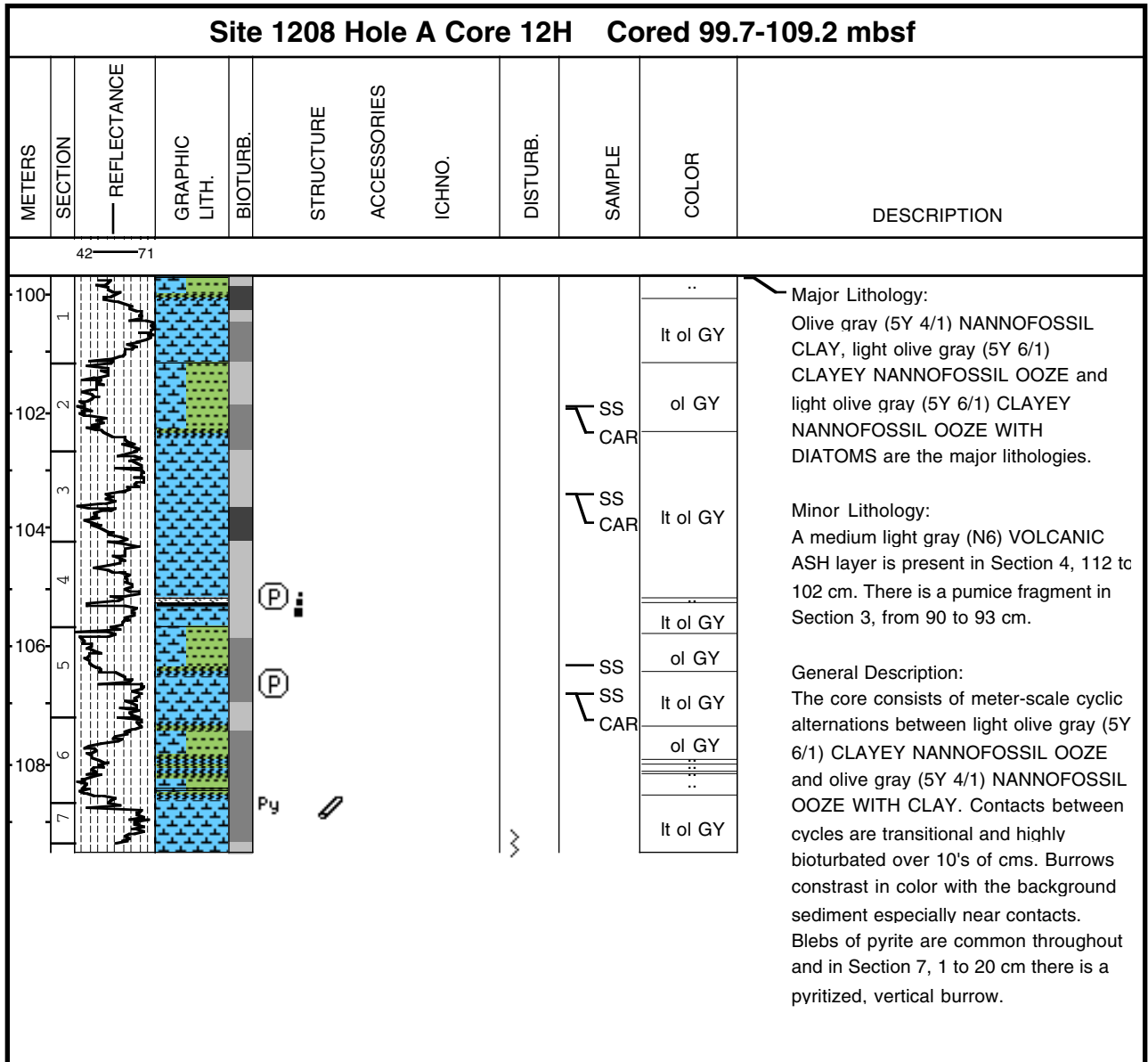
Core Photo



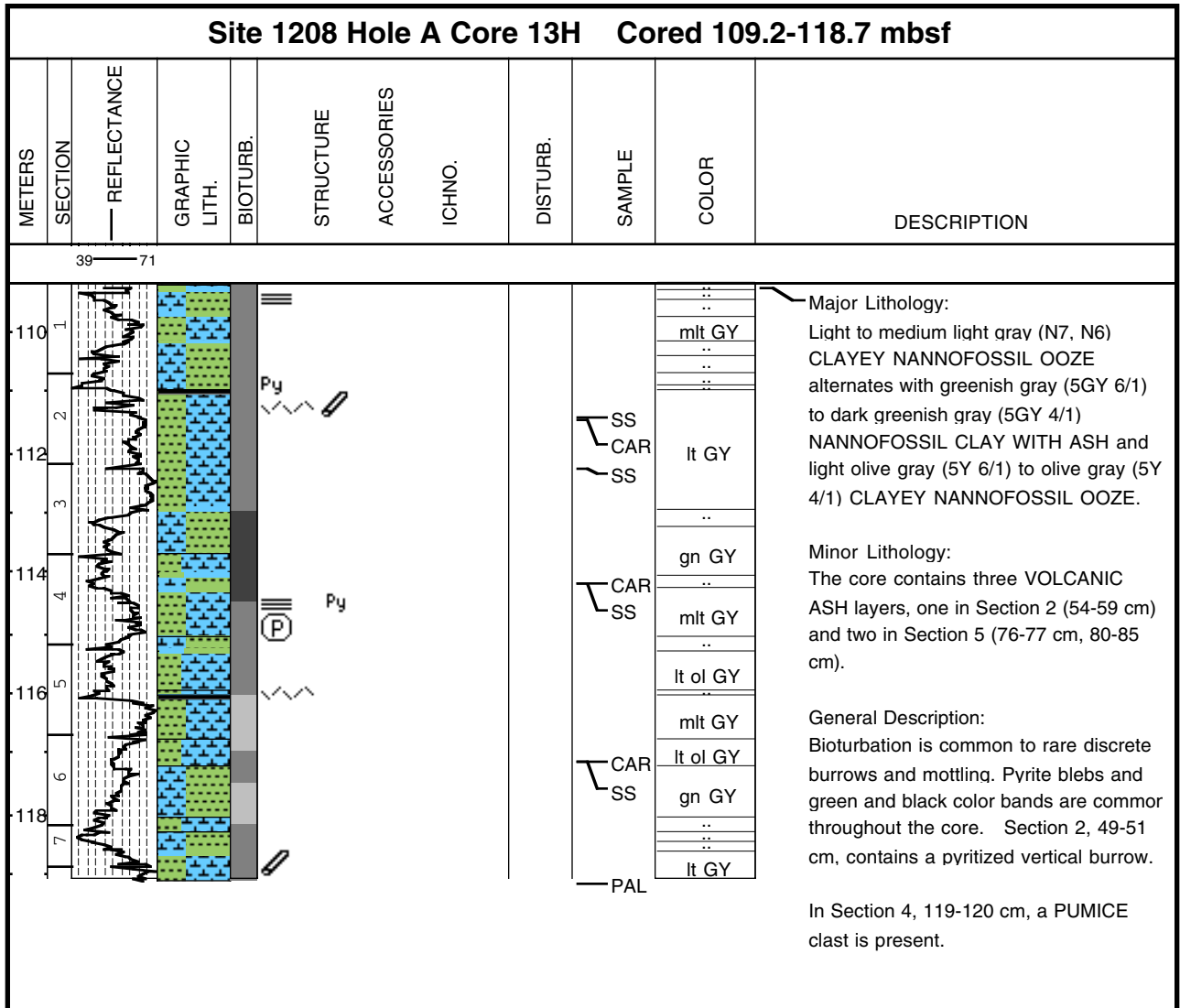
Core Photo



Core Photo



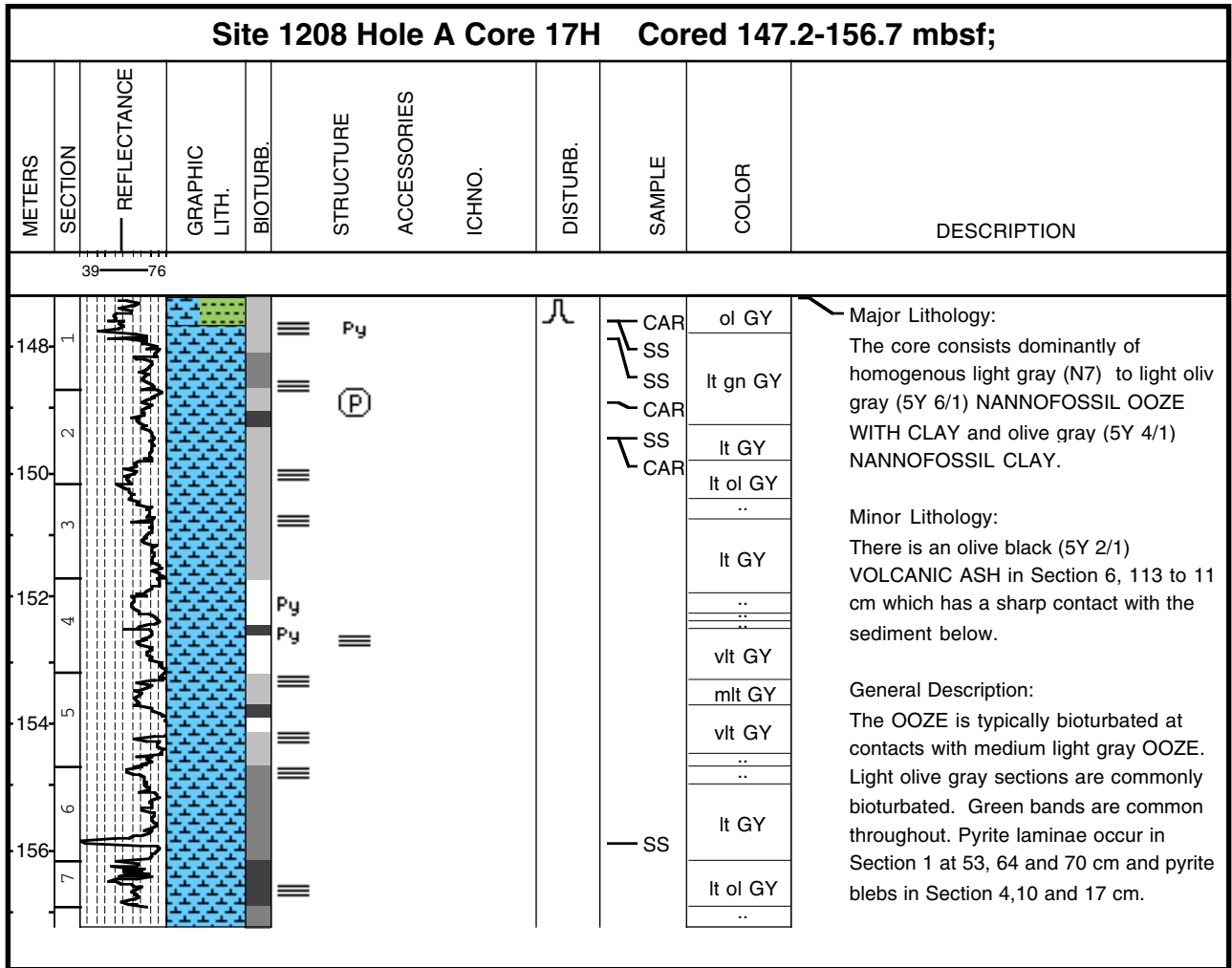
Core Photo



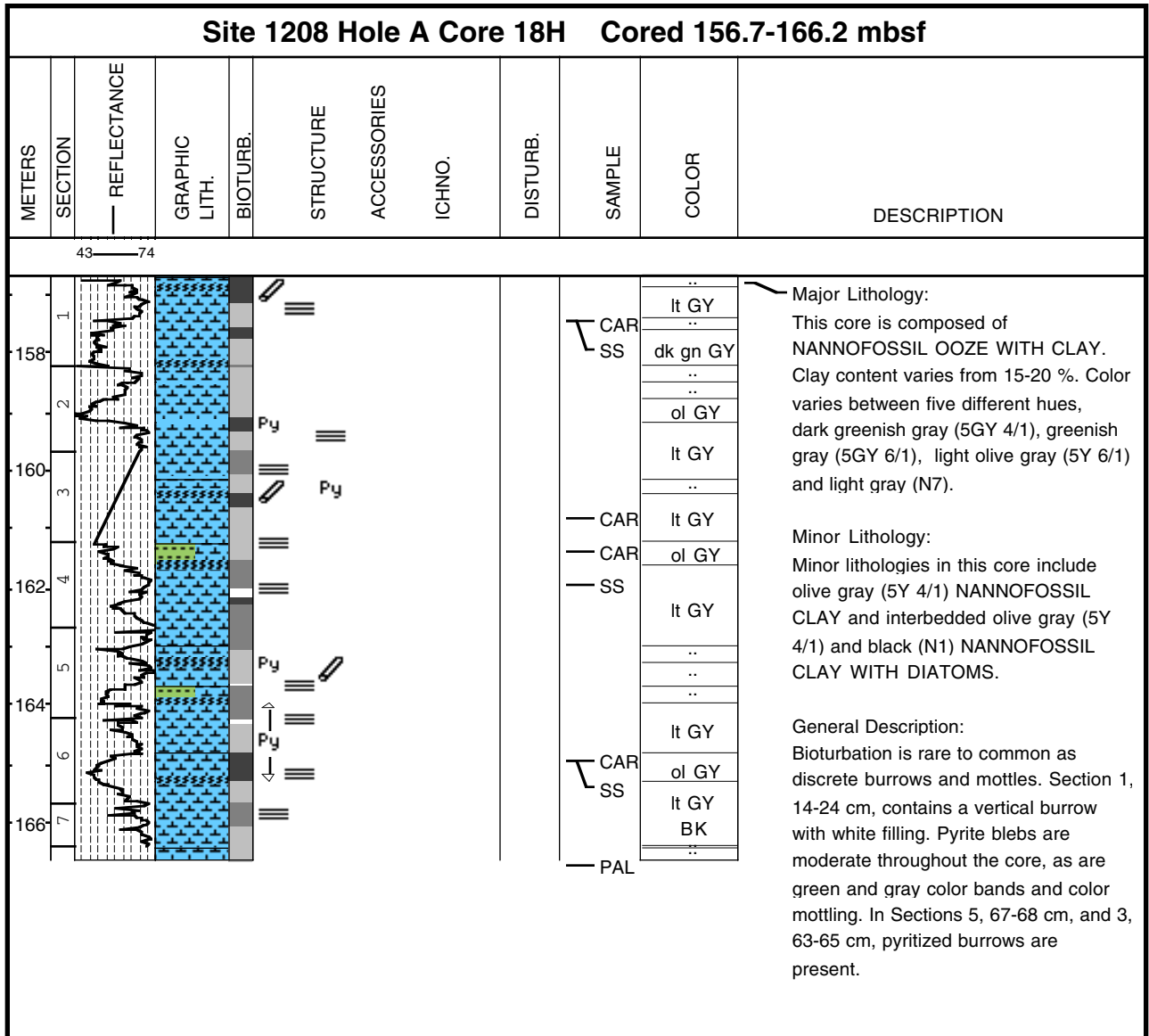
Core Photo

Site 1208 Hole A Core 16H Cored 137.7-147.2 mbsf											
METERS	SECTION	REFLECTANCE	GRAPHIC LITH.	BIOTURB.	STRUCTURE	ACCESSORIES	ICHNO.	DISTURB.	SAMPLE	COLOR	DESCRIPTION
138	1	39							CAR	dk gn GY	<p>Major Lithologies: The dominant lithology is a light gray (N7) to greenish gray (5GY 6/1) NANNOFOSSIL OOZE and a dark greenish gray (5GY 4/1) NANNOFOSSIL OOZE WITH RADIOLARIANS.</p> <p>General Description: Both lithologies are bioturbated and mottled throughout with ample light olive gray (5Y 6/1) burrow fill. Faint pyrite and reduced iron laminations occur throughout as well. Prominent pyrite occurrences are noted in the barrel sheet.</p>
140	2							CAR	gn GY		
142	3							SS	lt GY		
144	4							SS	lt GY		
144	5							CAR	..		
146	6								..		
147	7								lt GY		
										gn GY	
									PAL		

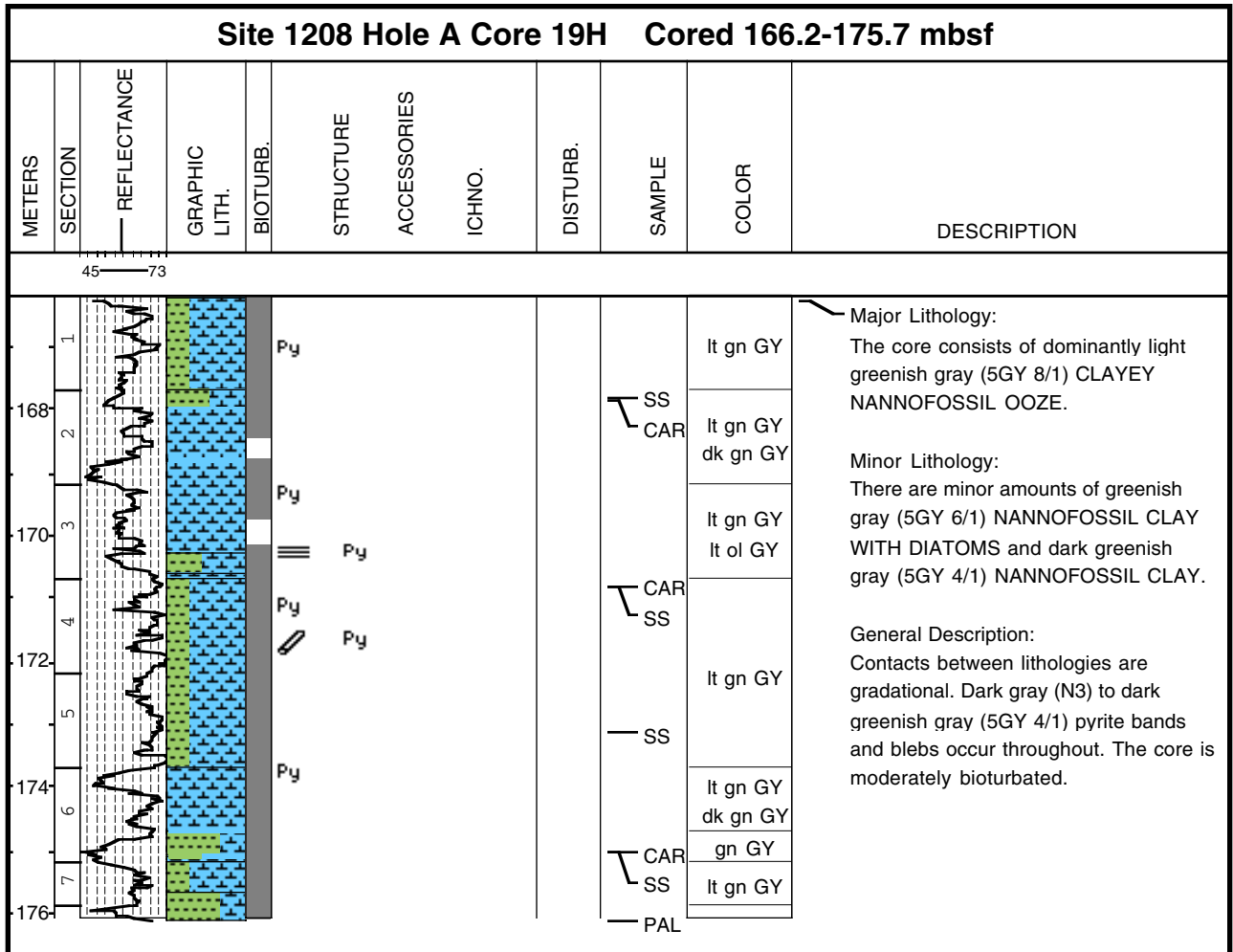
Core Photo



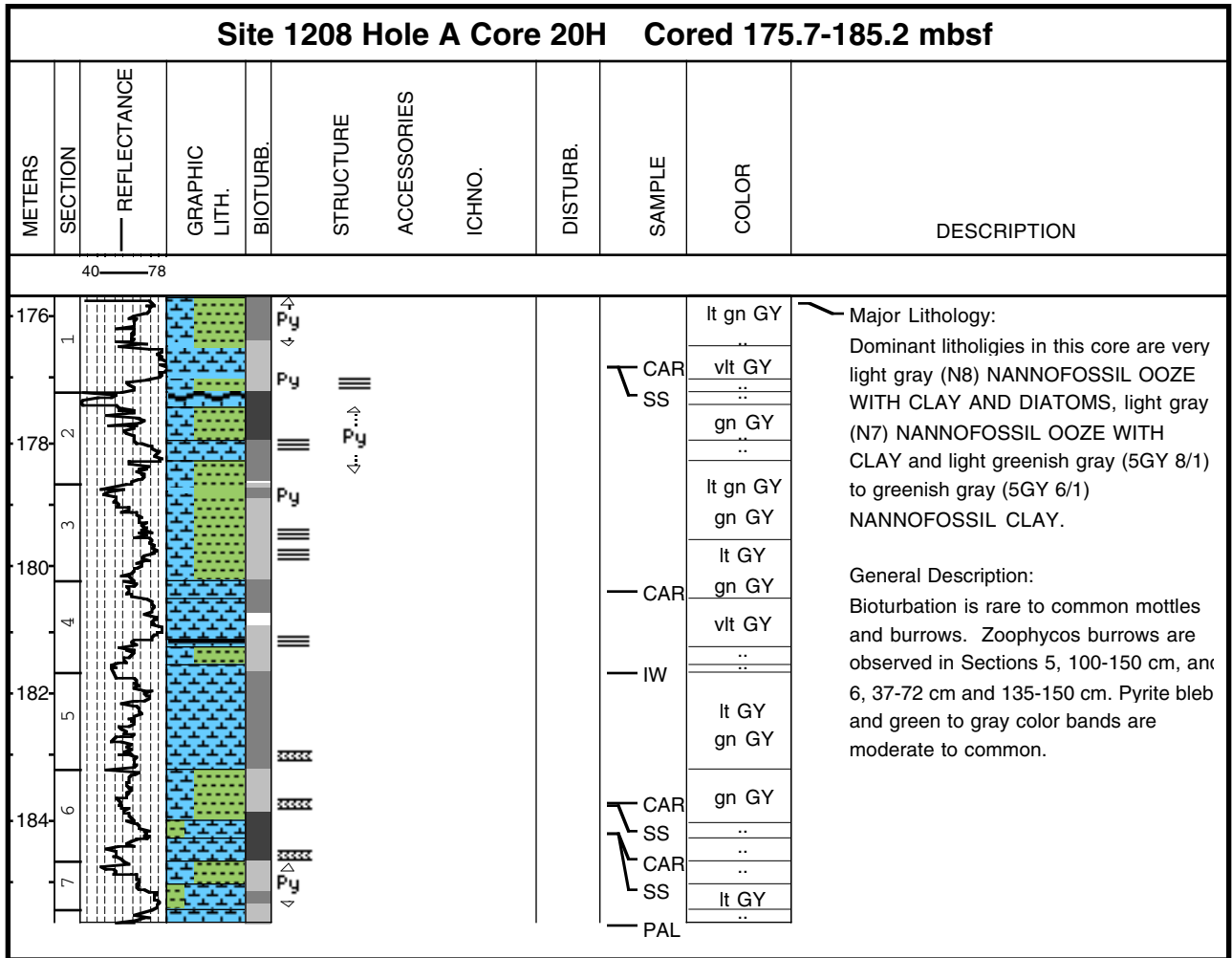
Core Photo



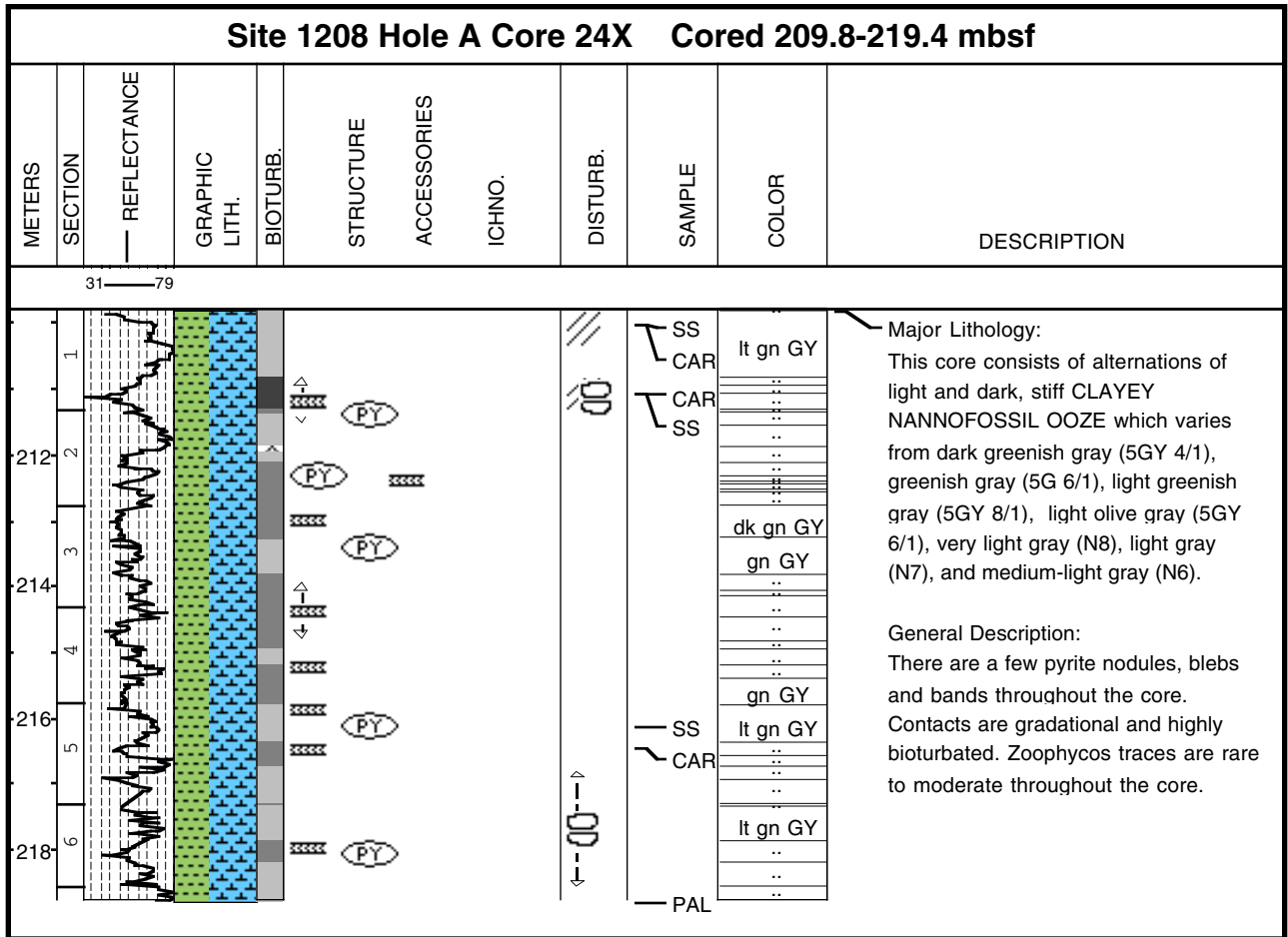
Core Photo



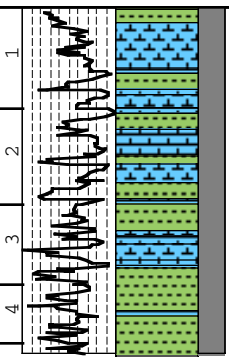
Core Photo



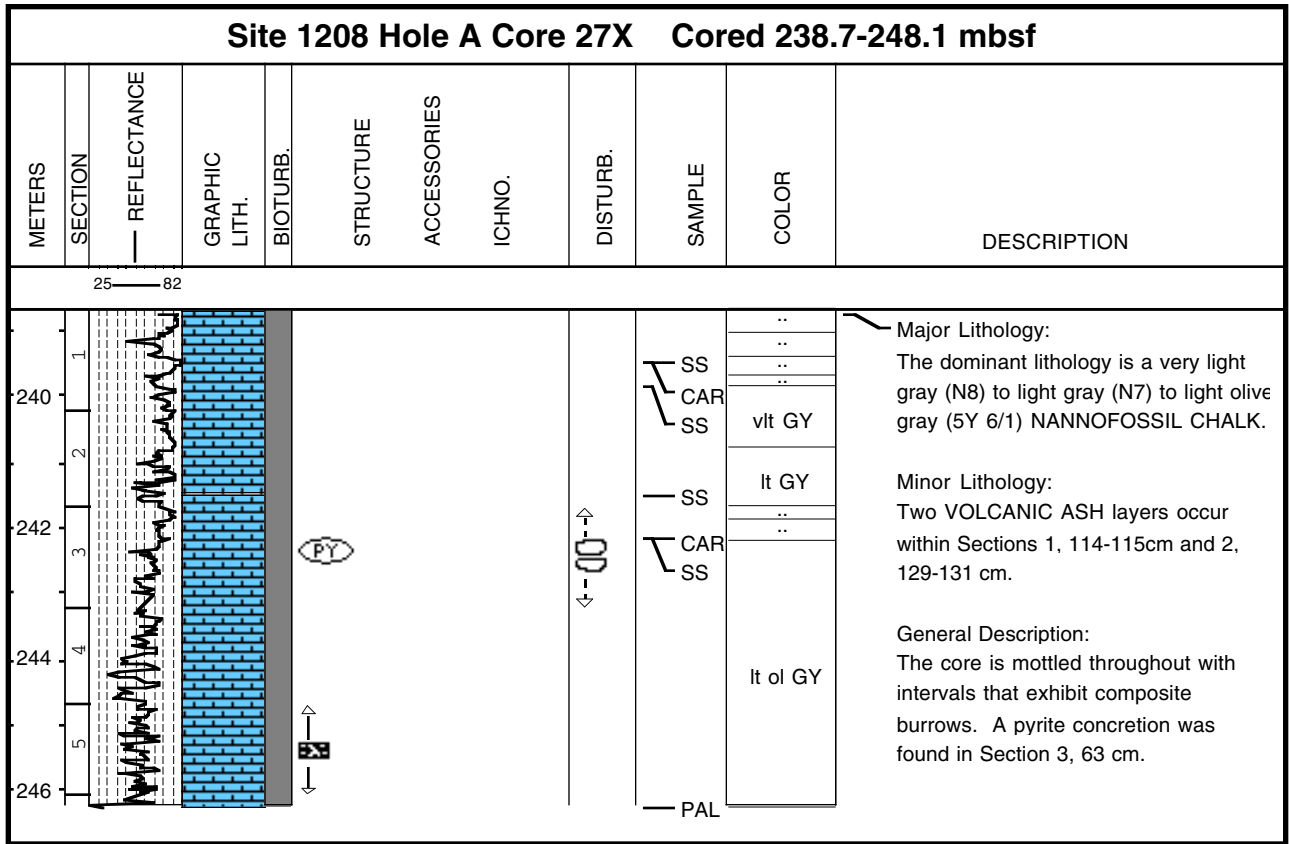
Core Photo



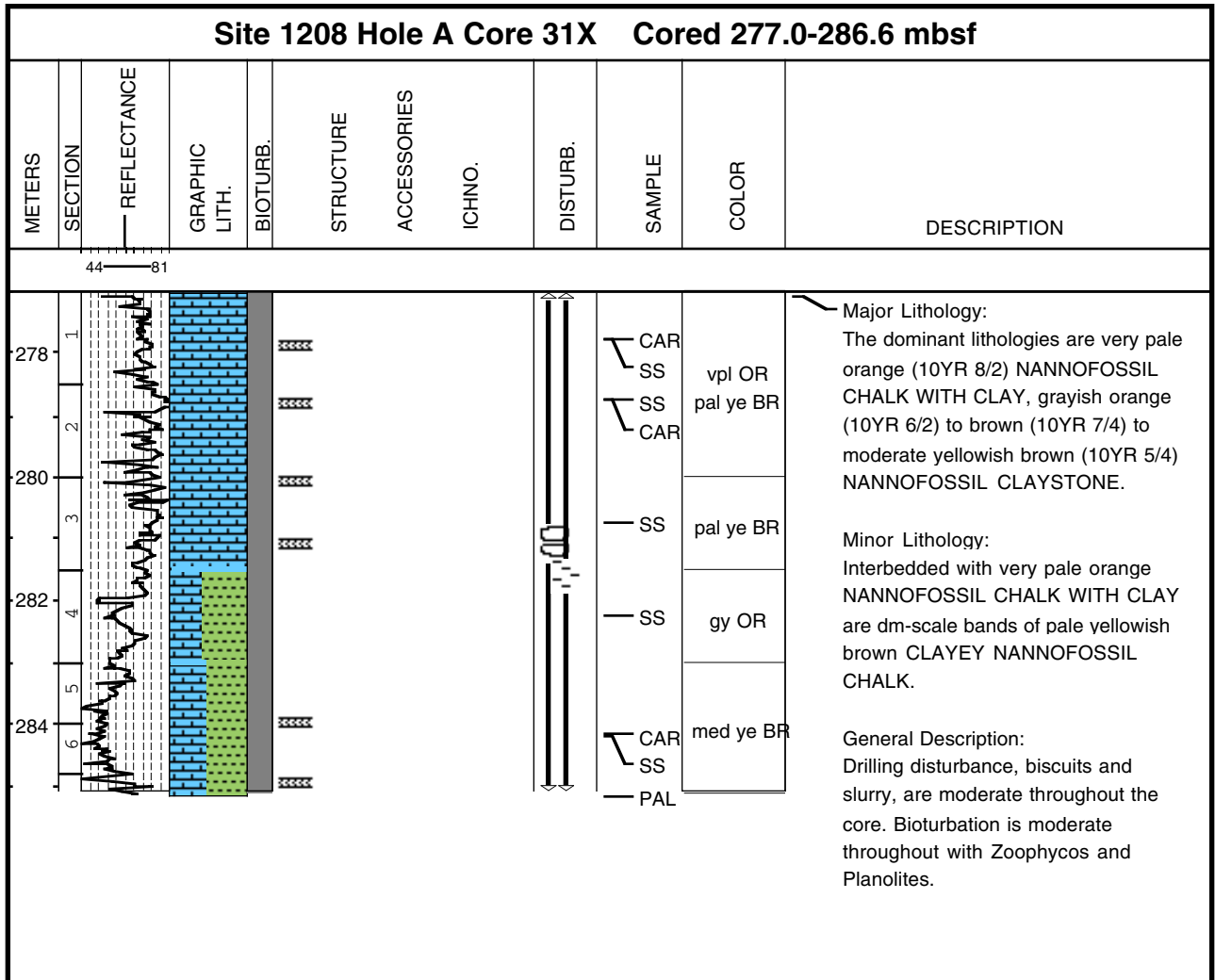
Core Photo

Site 1208 Hole A Core 25X Cored 219.4-229.1 mbsf											
METERS	SECTION	REFLECTANCE	GRAPHIC LITH.	BIOTURB.	STRUCTURE	ACCESSORIES	ICHNO.	DISTURB.	SAMPLE	COLOR	DESCRIPTION
		40 82							SS CAR CAR SS PAL	lt bl GY gn GY : : : : : : : : bl WH gn GY gn GY	<p>Major Lithology: The dominant lithology grades from a greenish gray (5GY 6/1) CLAY WITH NANNOFOSSILS to a light bluish gray (5B 7/1) and bluish white (5B 9/1) NANNOFOSSIL CHALK.</p> <p>General Description: The texture is mostly homogeneous, with rare Zoophycos and Chondrites burrows.</p>

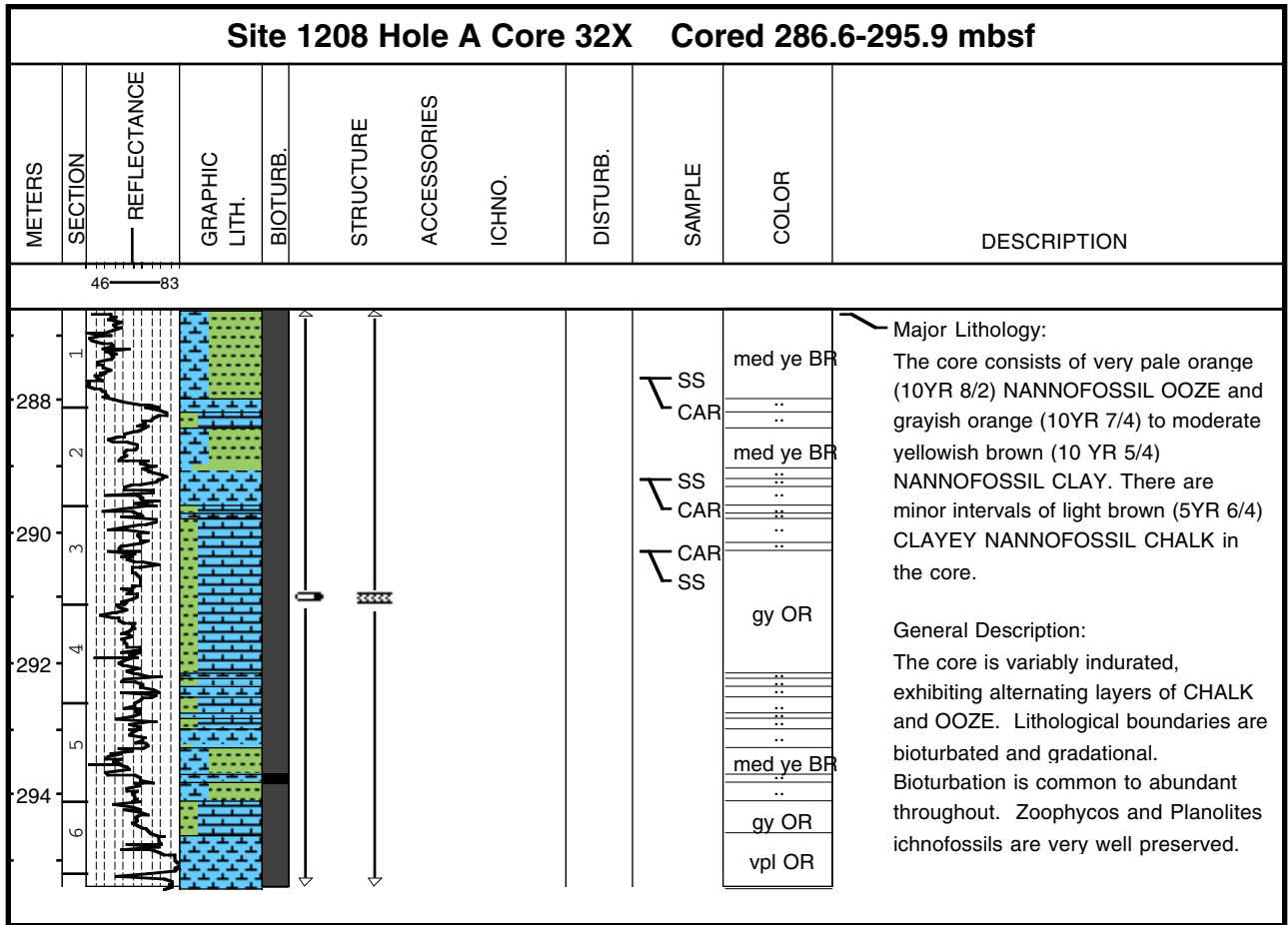
Core Photo



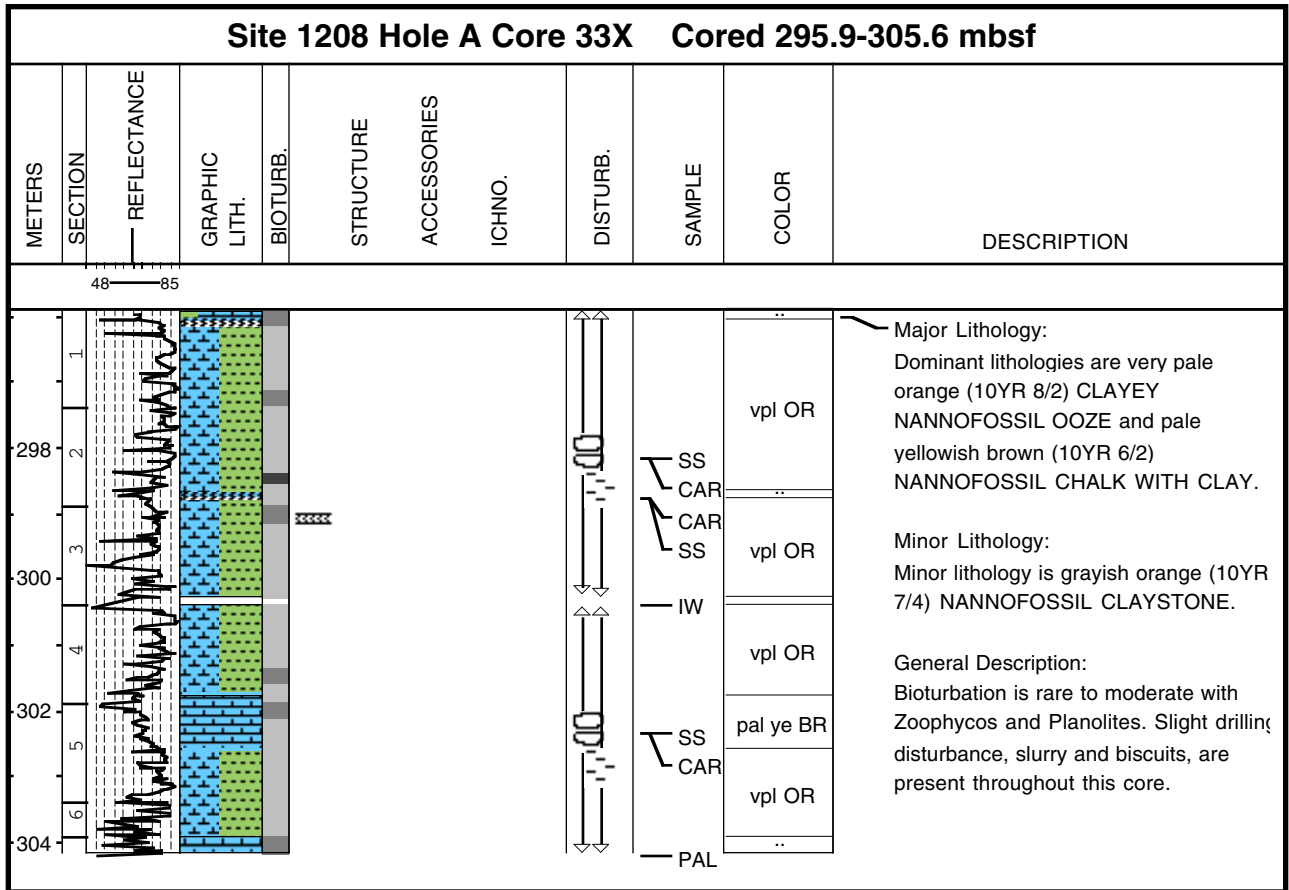
Core Photo



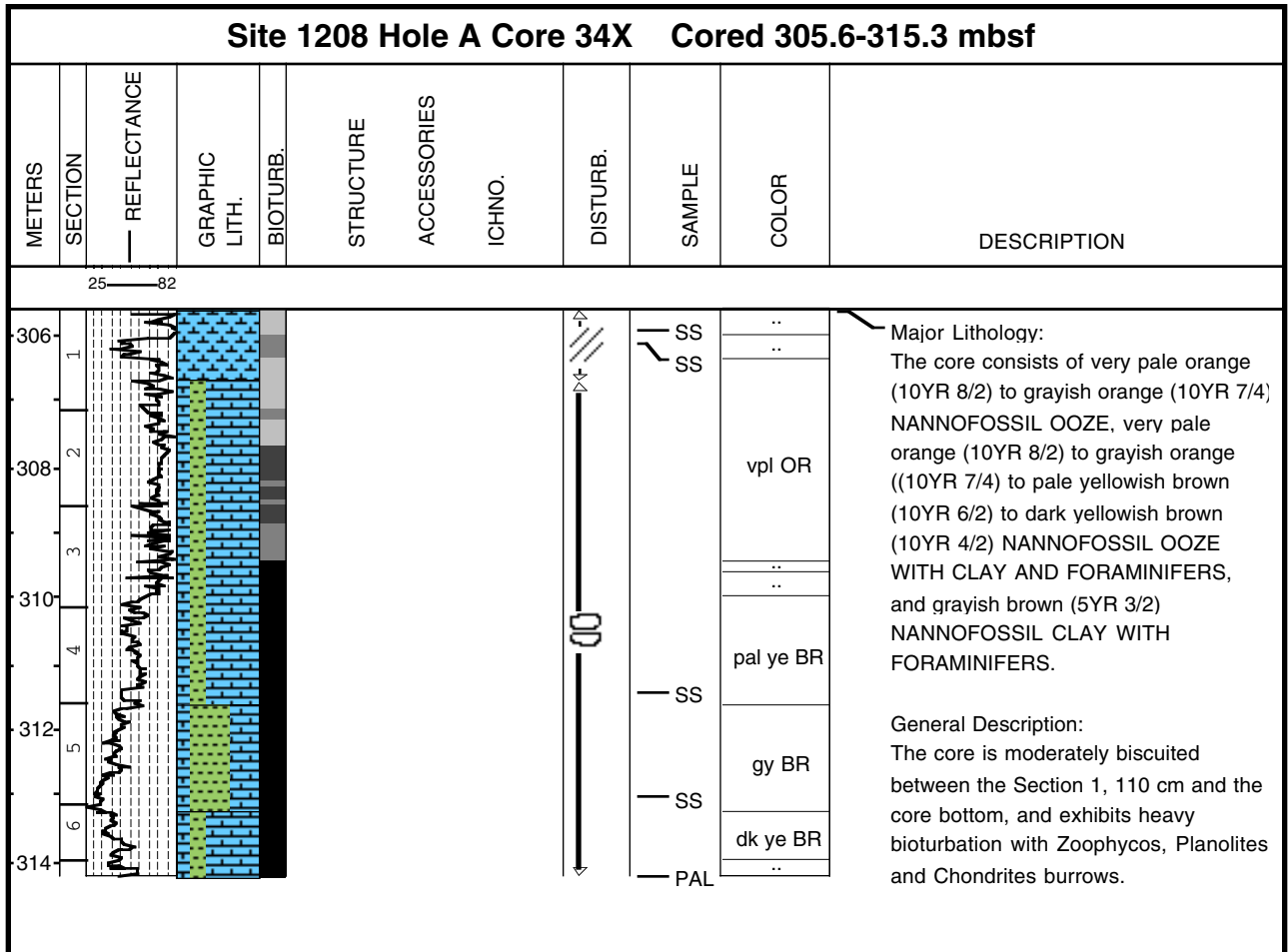
Core Photo



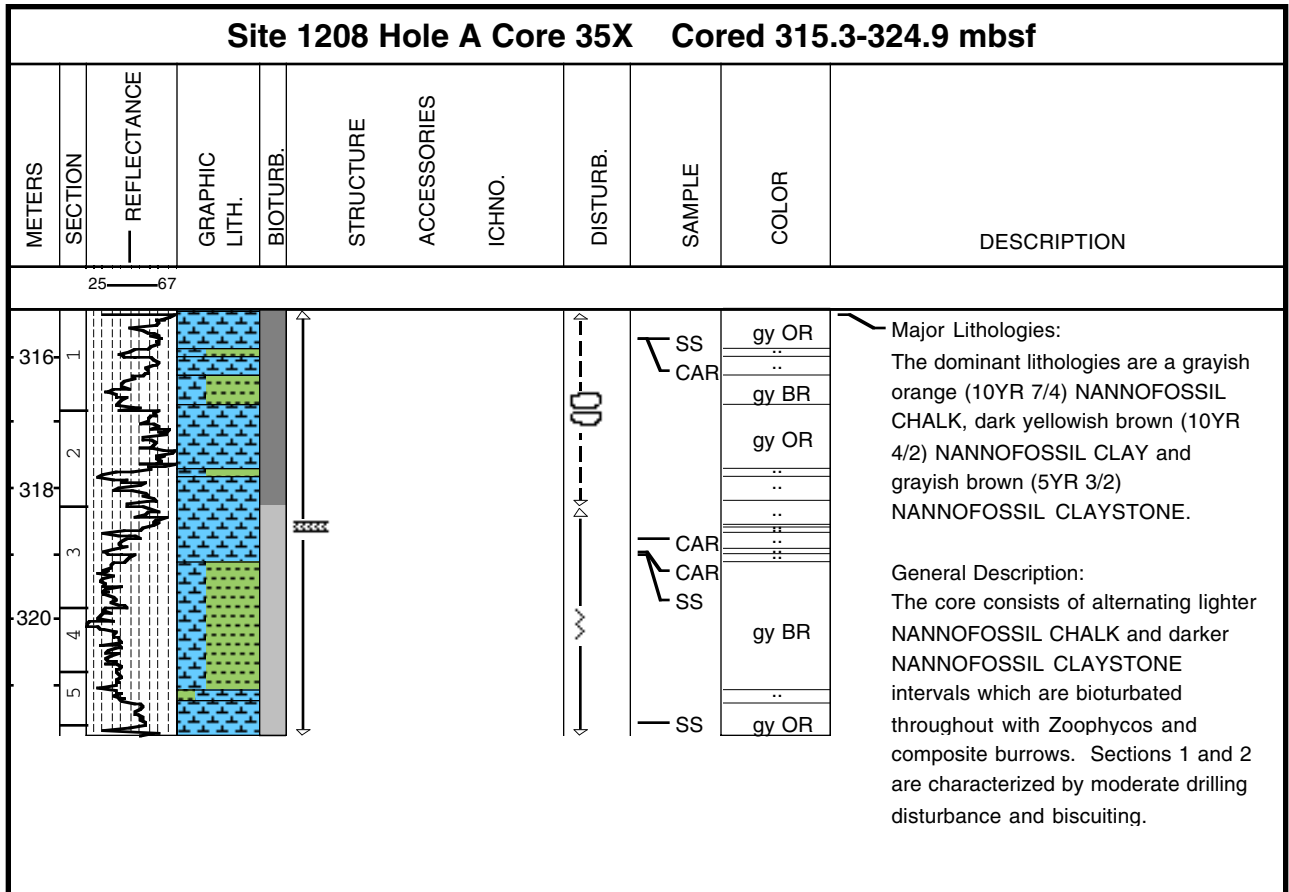
Core Photo



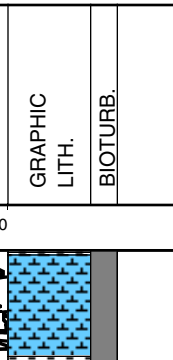
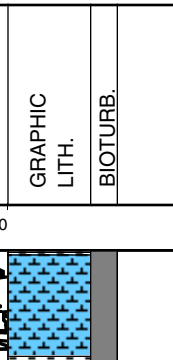
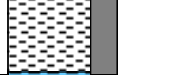
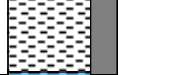
Core Photo



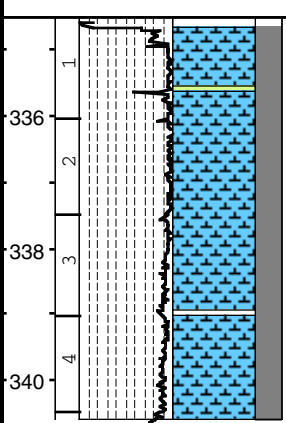
Core Photo



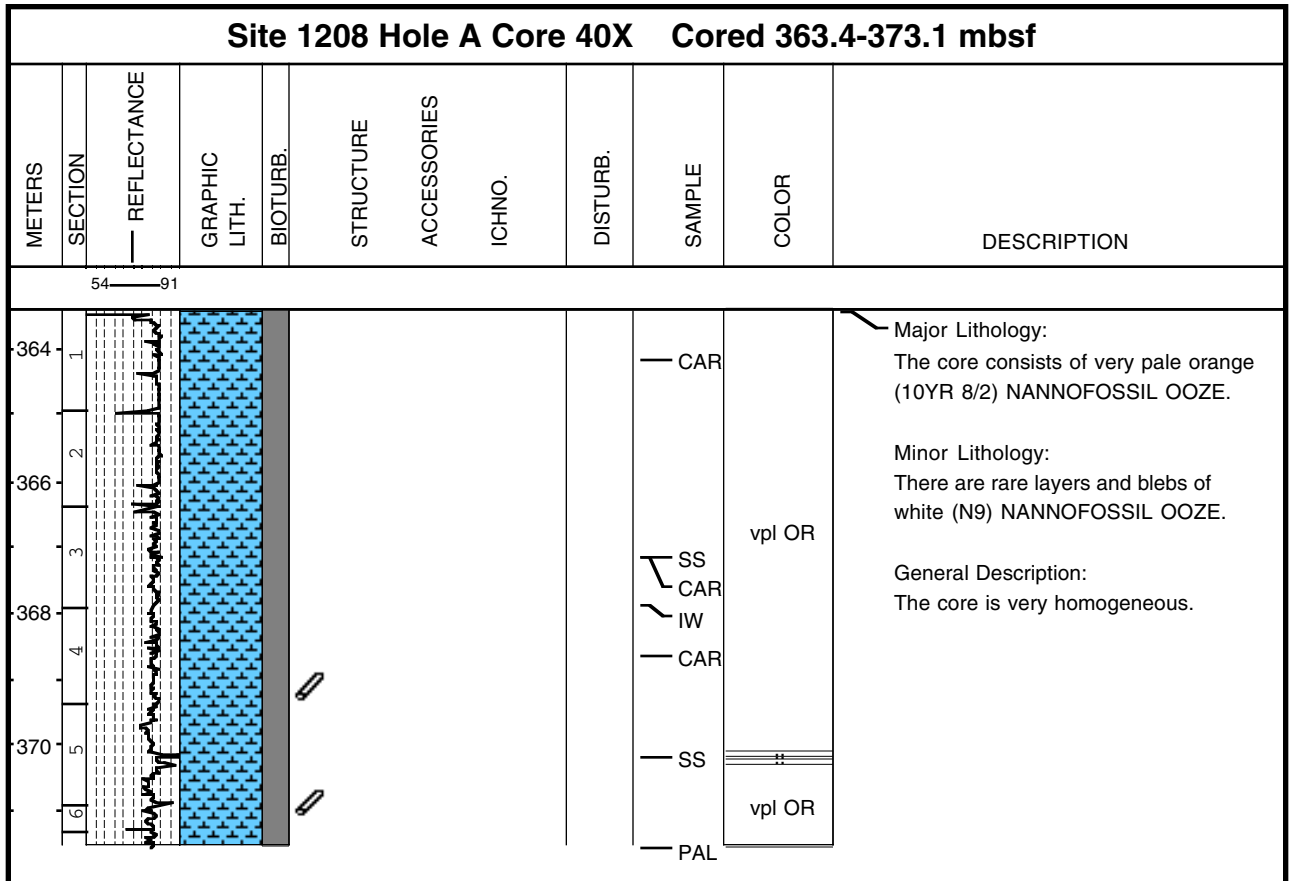
Core Photo

Site 1208 Hole A Core 36X Cored 324.9-334.5 mbsf											
METERS	SECTION	REFLECTANCE	GRAPHIC LITH.	BIOTURB.	STRUCTURE	ACCESSORIES	ICHNO.	DISTURB.	SAMPLE	COLOR	DESCRIPTION
		30 — 70									
326	1										<p>Major Lithology: The dominant lithologies are grayish orange (10YR 7/4) NANNOFOSSIL OOZE and dusky brown (5YR 2/2) CLAYSTONE WITH NANNOFOSSILS to CLAYSTONE.</p> <p>General Description: The CLAYSTONE is distinctly mottled with prominent Zoophycos and Planolites burrows. The OOZE exhibits the same bioturbation features near the top of Section 1, but most of the ooze exhibits high coring disturbance and has a soupy texture.</p>
	2										
									SS	gy OR	
									SS	dsk BR	
									SS		
									PAL		

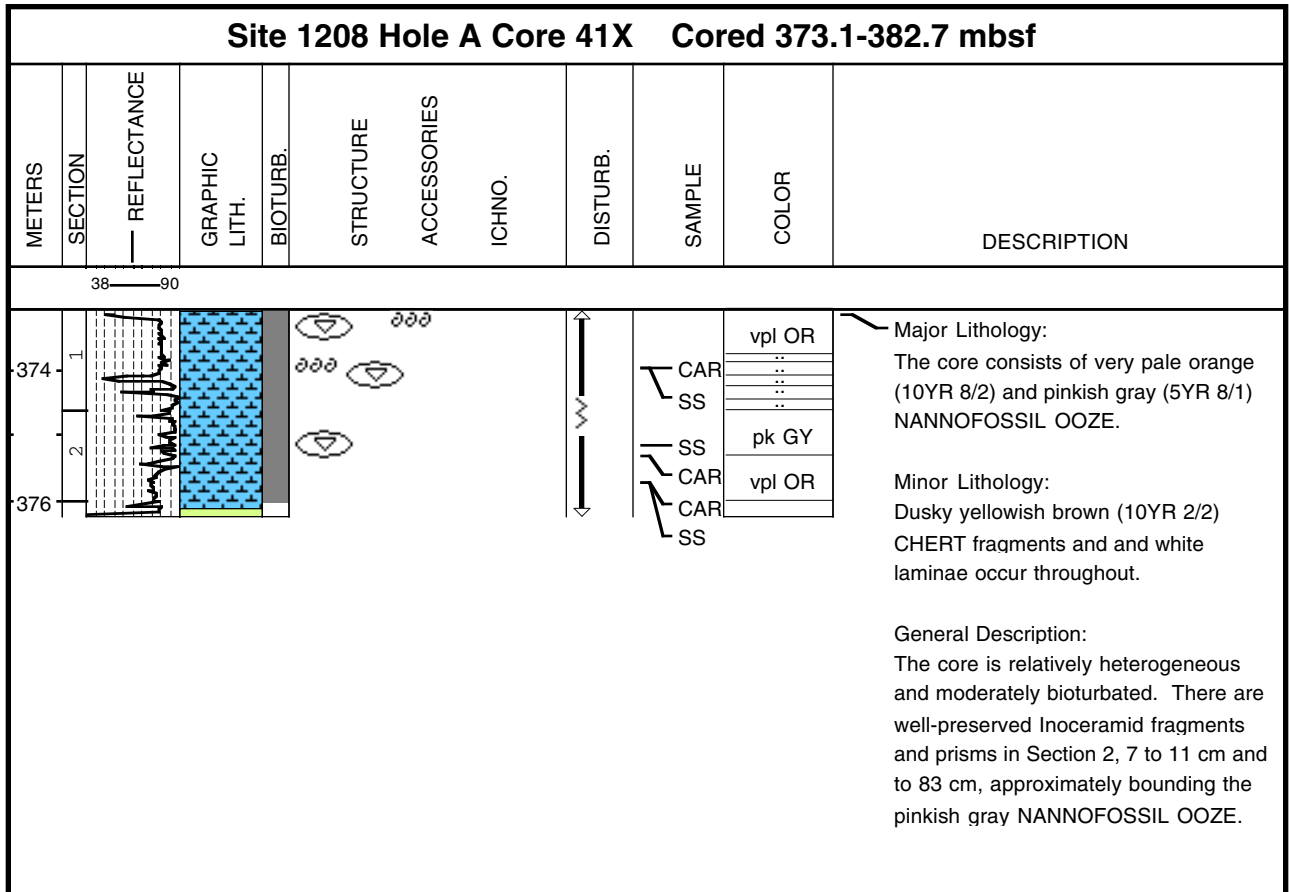
Core Photo

Site 1208 Hole A Core 37X Cored 334.5-344.1 mbsf												
METERS	SECTION	REFLECTANCE	GRAPHIC LITH.	BIOTURB.	STRUCTURE	ACCESSORIES	ICHNO.	DISTURB.	SAMPLE	COLOR	DESCRIPTION	
		33 — 86								vpl OR	<p>Major Lithology: Core consists of very pale orange (10YR 8/2) NANNOFOSSIL OOZE.</p> <p>Minor Lithology: In Section 1, 107-112 cm, pale yellowish brown (10YR 6/2) to dark yellowish brown (10YR 4/2) CHERT fragments (cm-scale) are present.</p> <p>General Description: The first 13 cm of the core consists of drilling cavings. Bioturbation is moderate with white (N9) and very pale orange (10YR 8/2) mottles and burrow fillings.</p>	
									<ul style="list-style-type: none"> — CAR — IW — SS — CAR — SS — CAR — PAL 			



Core Photo



Core Photo



Core Photo

Site 1208 Hole A Core 42X Cored 382.7-392.3 mbsf										
METERS	SECTION	GRAPHIC LITH.	BIOTURB.	STRUCTURE	ACCESSORIES	ICHNO.	DISTURB.	SAMPLE	COLOR	DESCRIPTION
										<p>Major Lithology: The core catcher consists of fragments of moderate reddish brown (10 YR 4/6) CHERT with very pale orange (10 YR 8/2) PORCELLANITE and CHALK adhering to the surface.</p>

