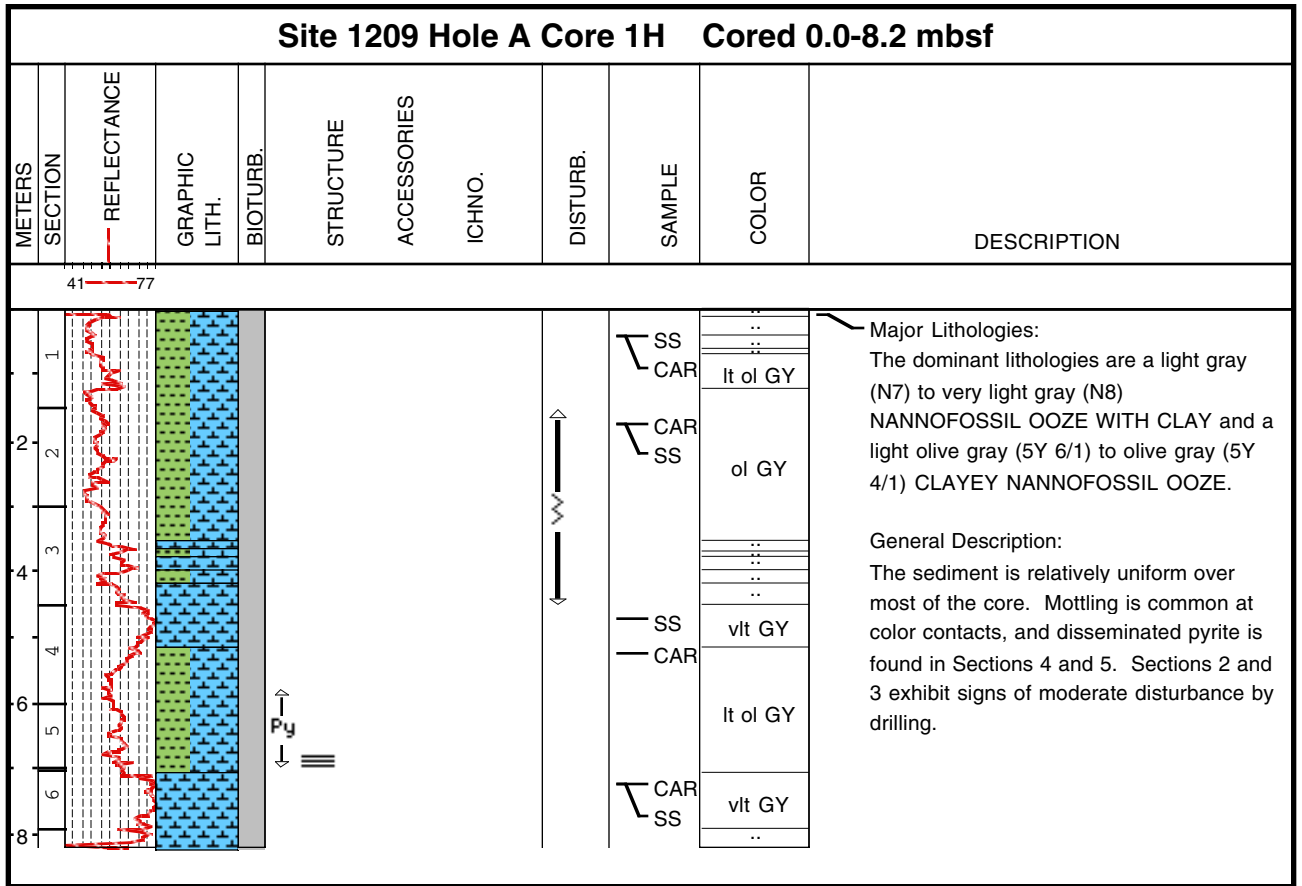
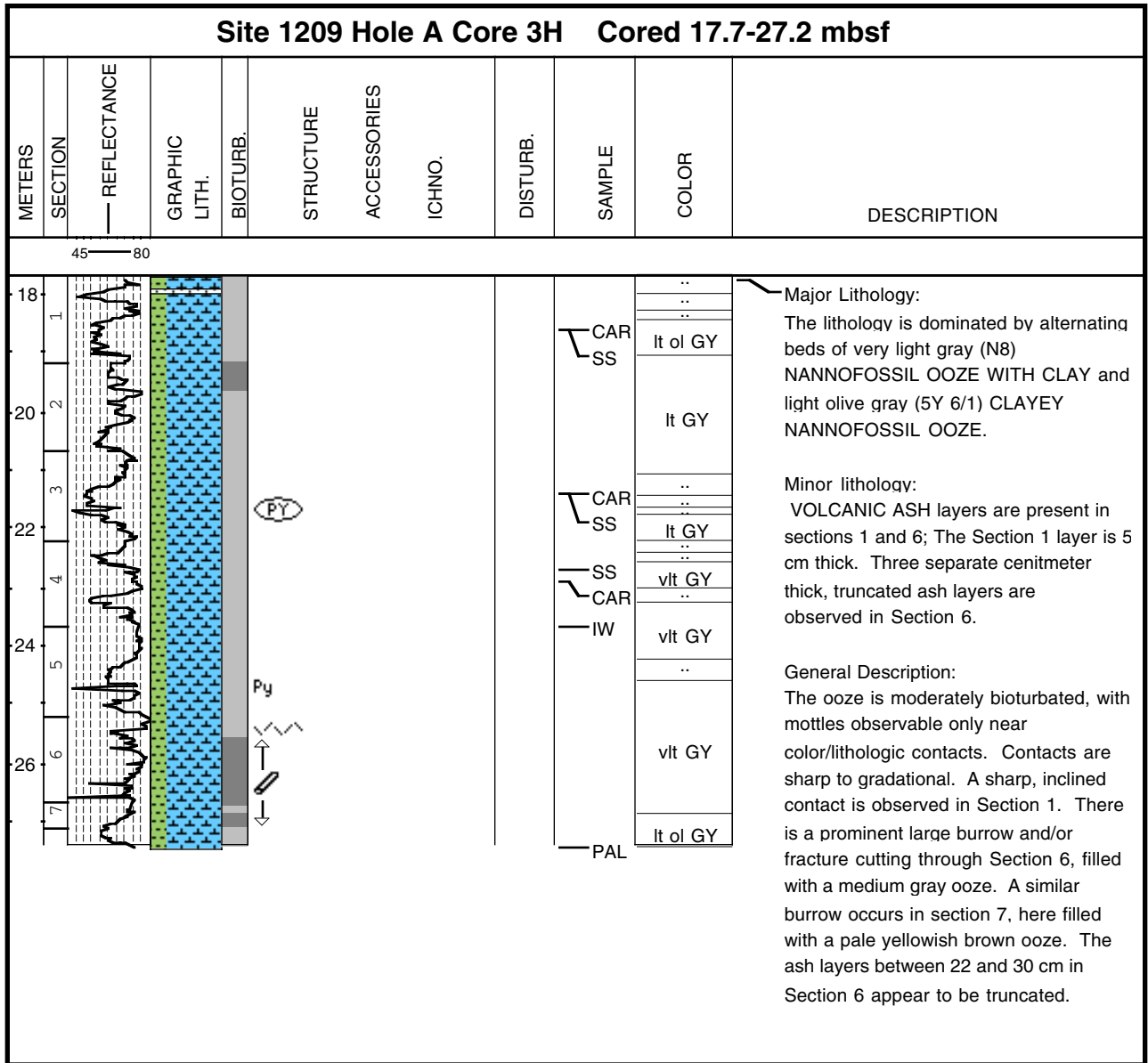


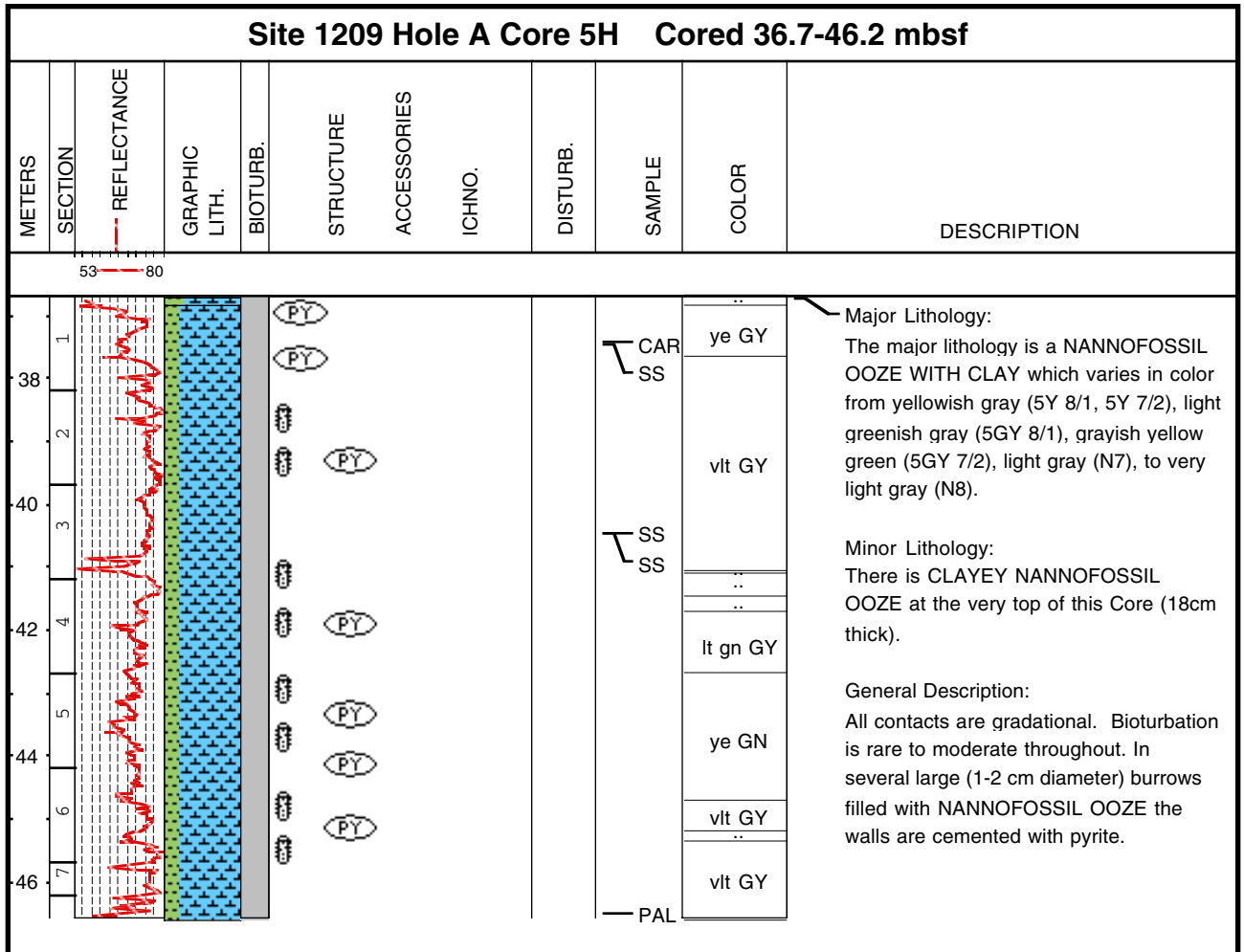
Core Photo



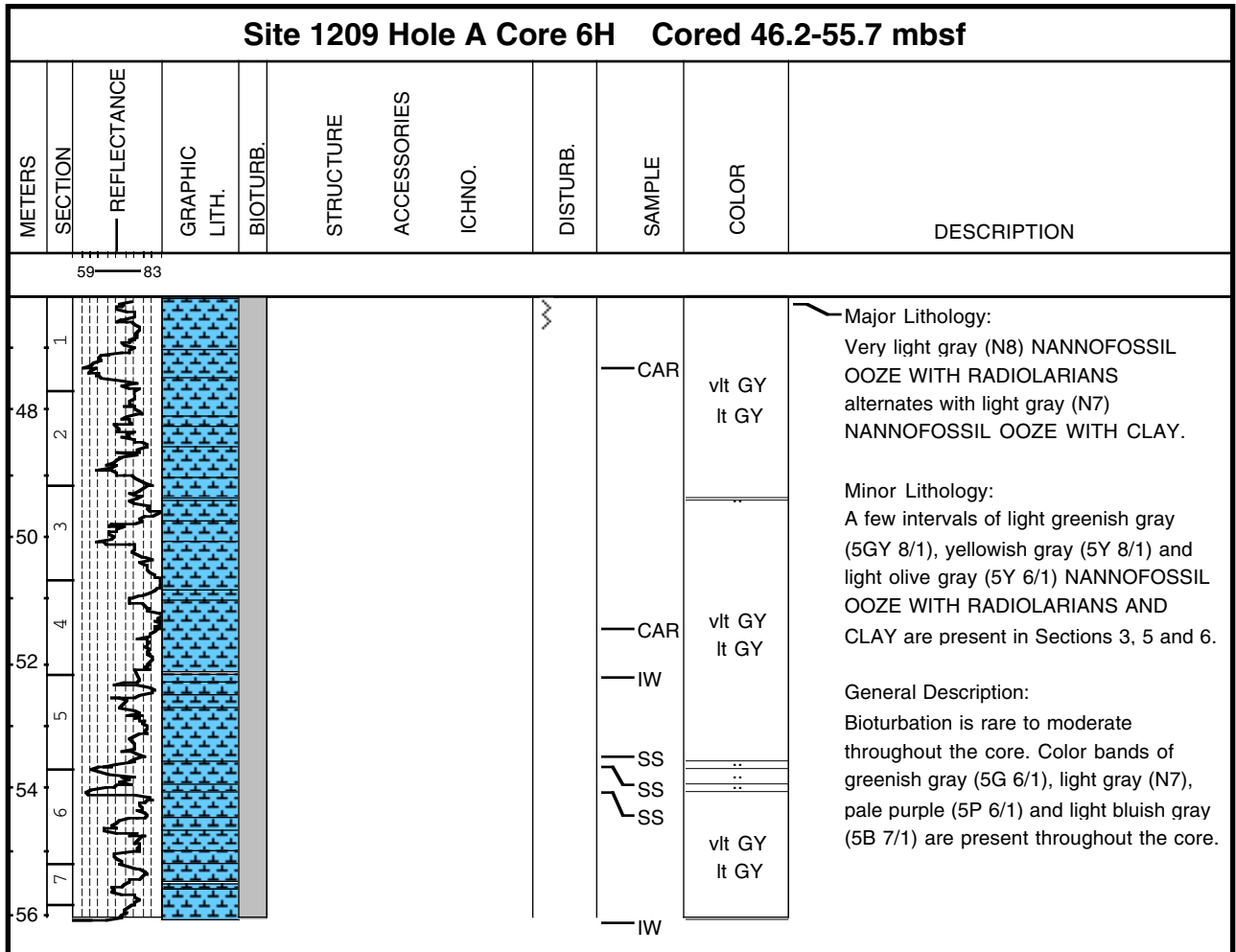
Core Photo



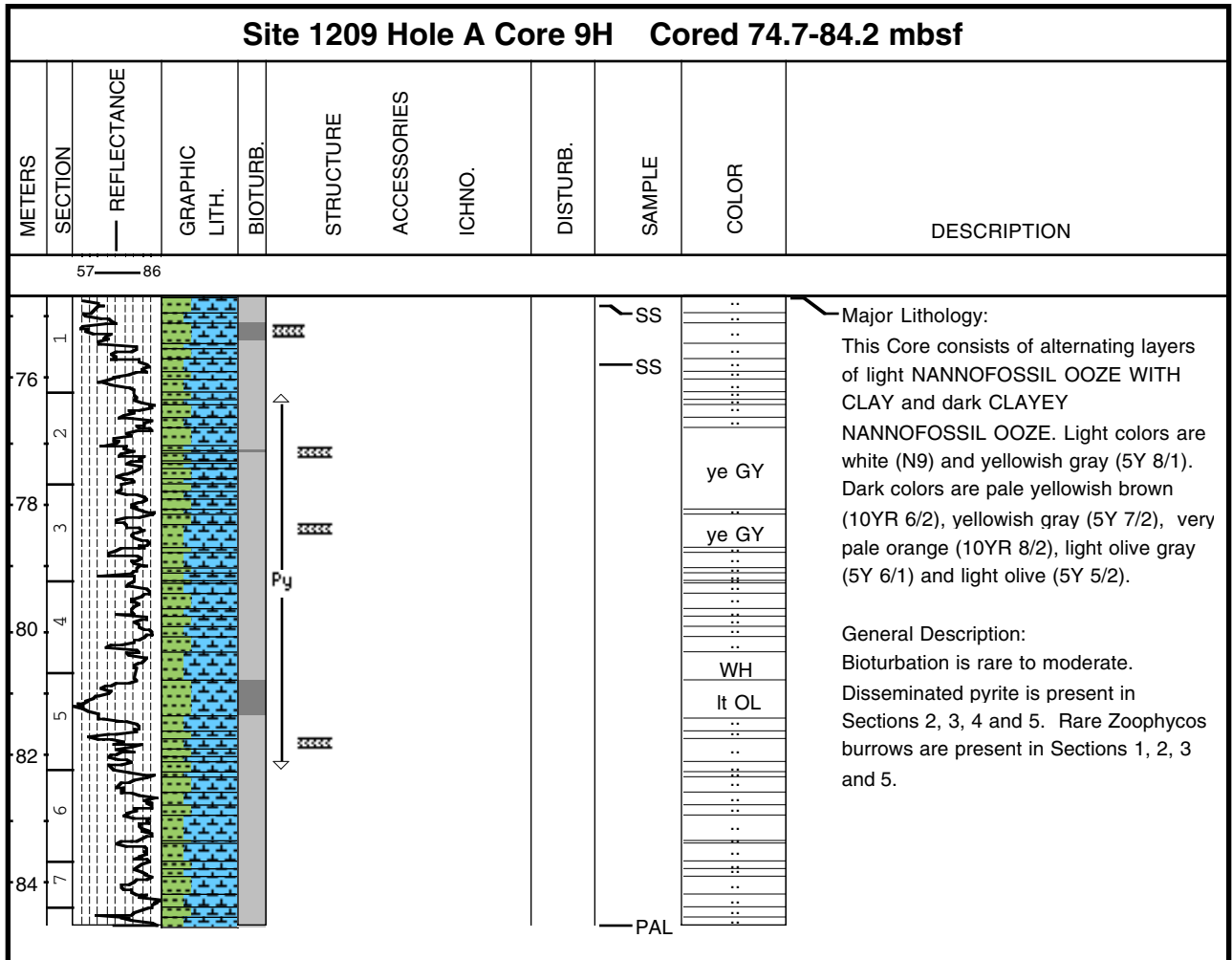
Core Photo



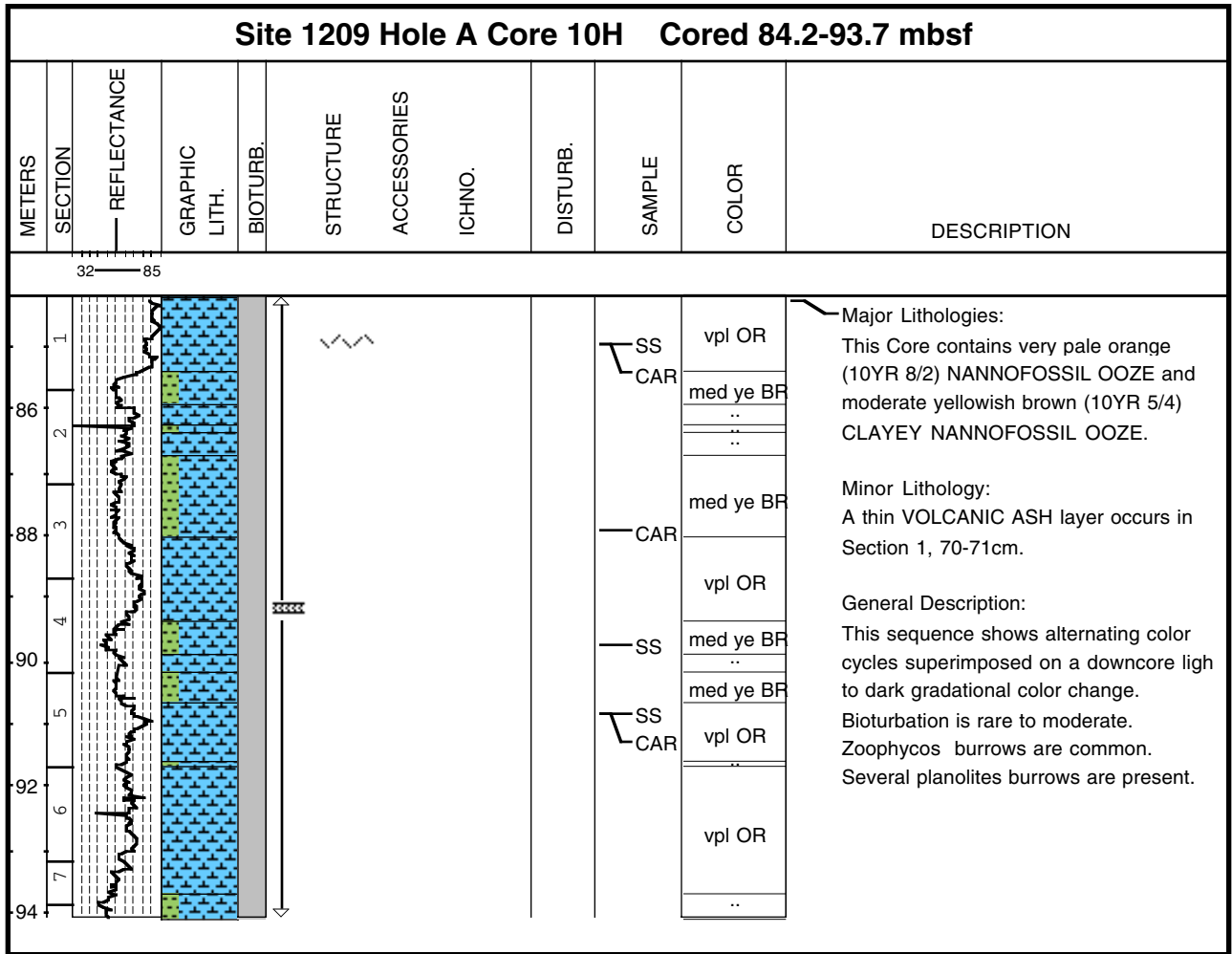
Core Photo



Core Photo



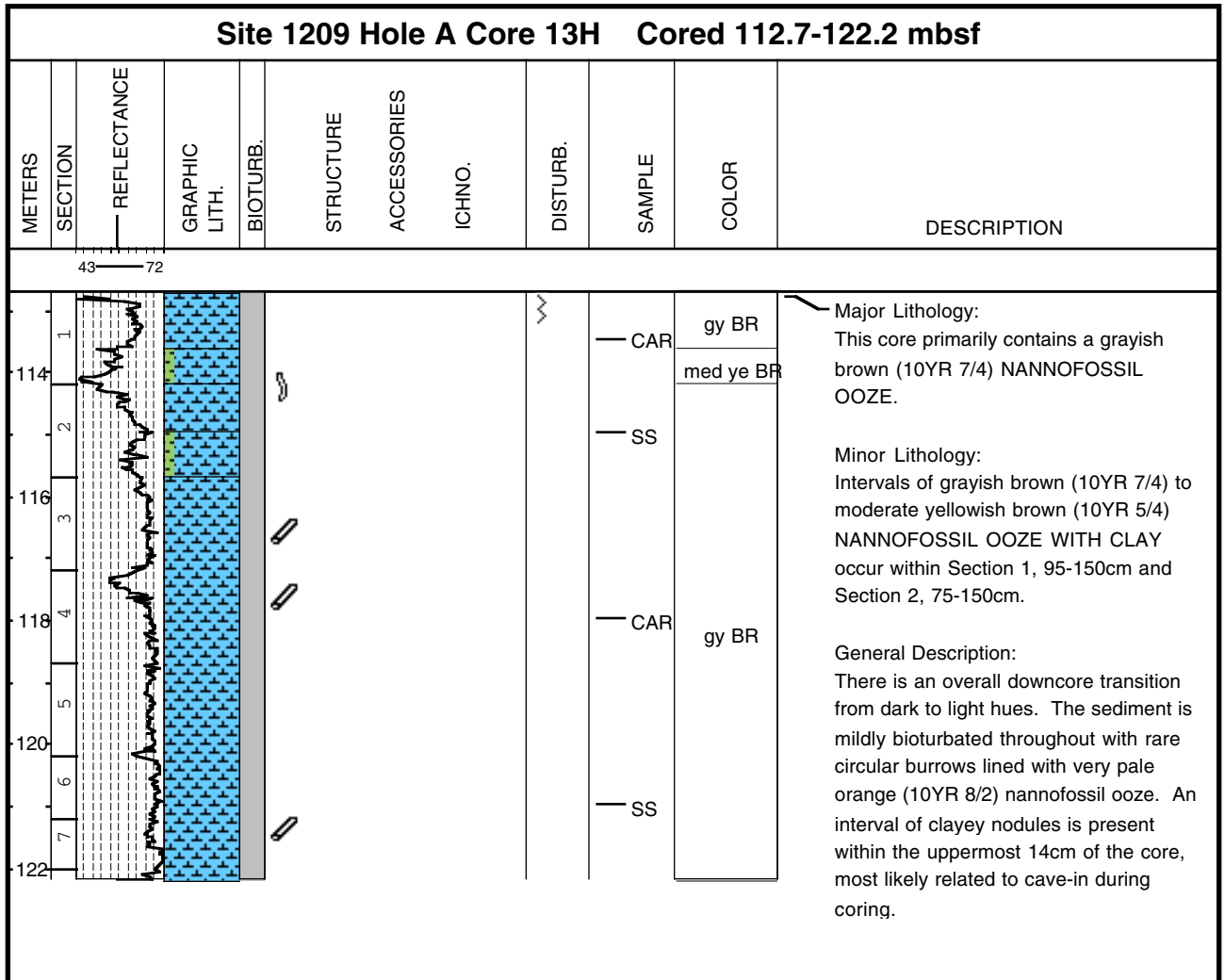
Core Photo



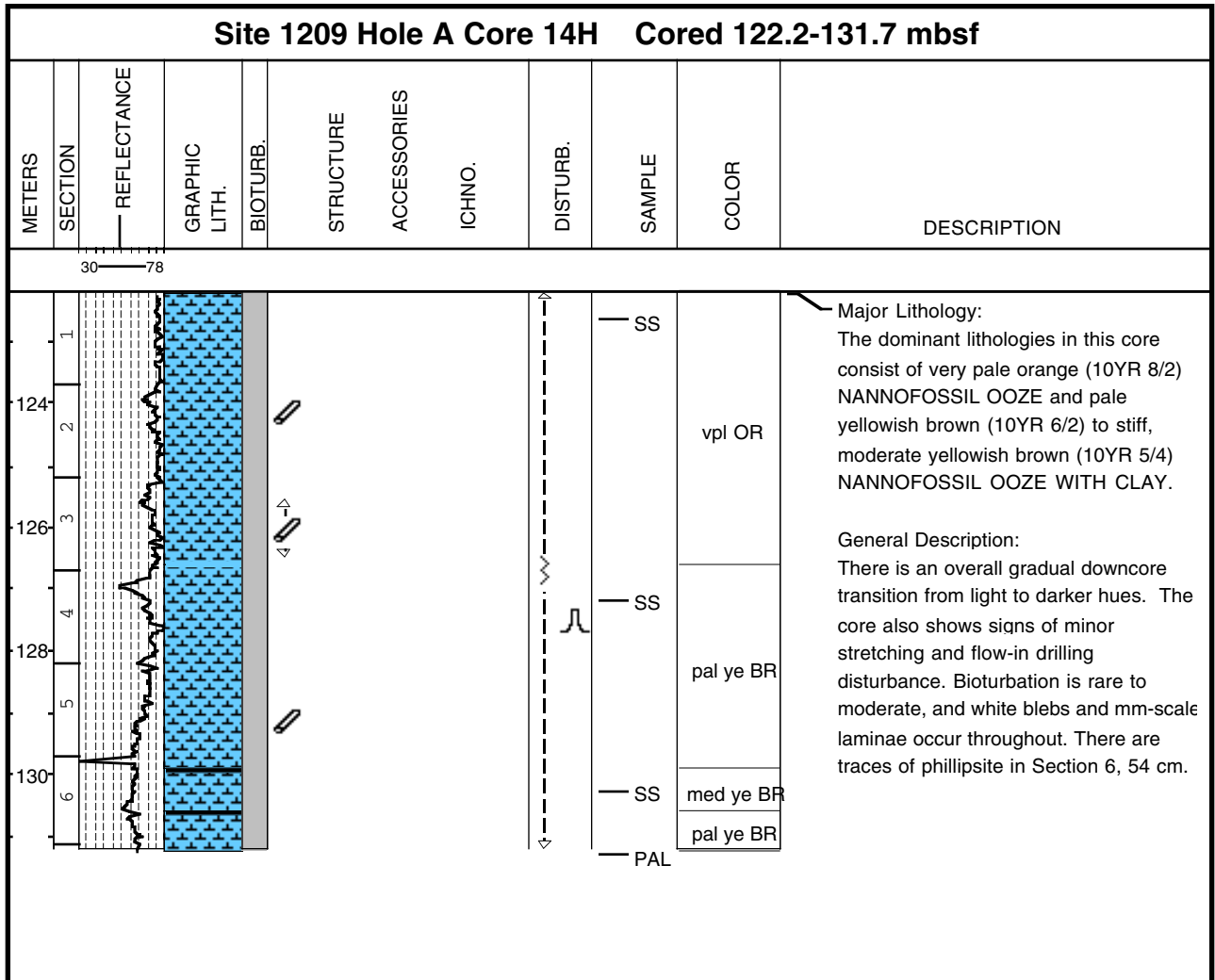
Core Photo

Site 1209 Hole A Core 11H Cored 93.7-103.2 mbsf											
METERS	SECTION	REFLECTANCE	GRAPHIC LITH.	BIOTURB.	STRUCTURE	ACCESSORIES	ICHNO.	DISTURB.	SAMPLE	COLOR	DESCRIPTION
94	1	39 — 74								gy OR	<p>Major Lithology: This Core contains grayish orange (10YR 7/4) NANNOFOSSIL OOZE WITH CLAY and dark yellowish brown (10YR 4/2) CLAYEY NANNOFOSSIL OOZE.</p> <p>General Description: The lithology is relatively uniform with the exception of the clayey interval in section 2. The sediment is slightly mottled throughout with abundant Zoophycos burrows. Bioturbation is rare to moderate.</p>
96	2								..		
98	3										
100	4										
102	5										
	6										
	7										
									CAR SS	gy OR	

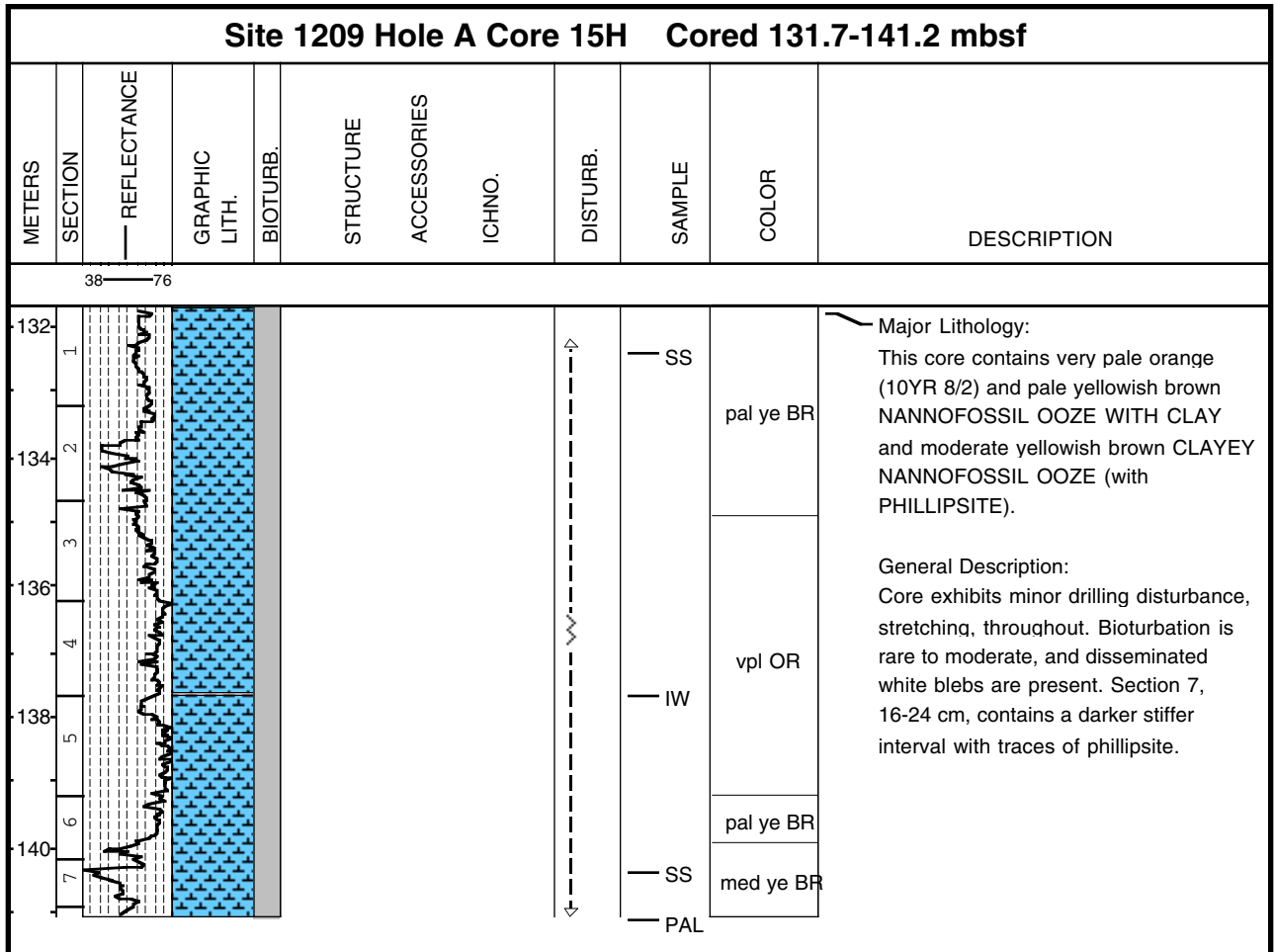
Core Photo



Core Photo



Core Photo



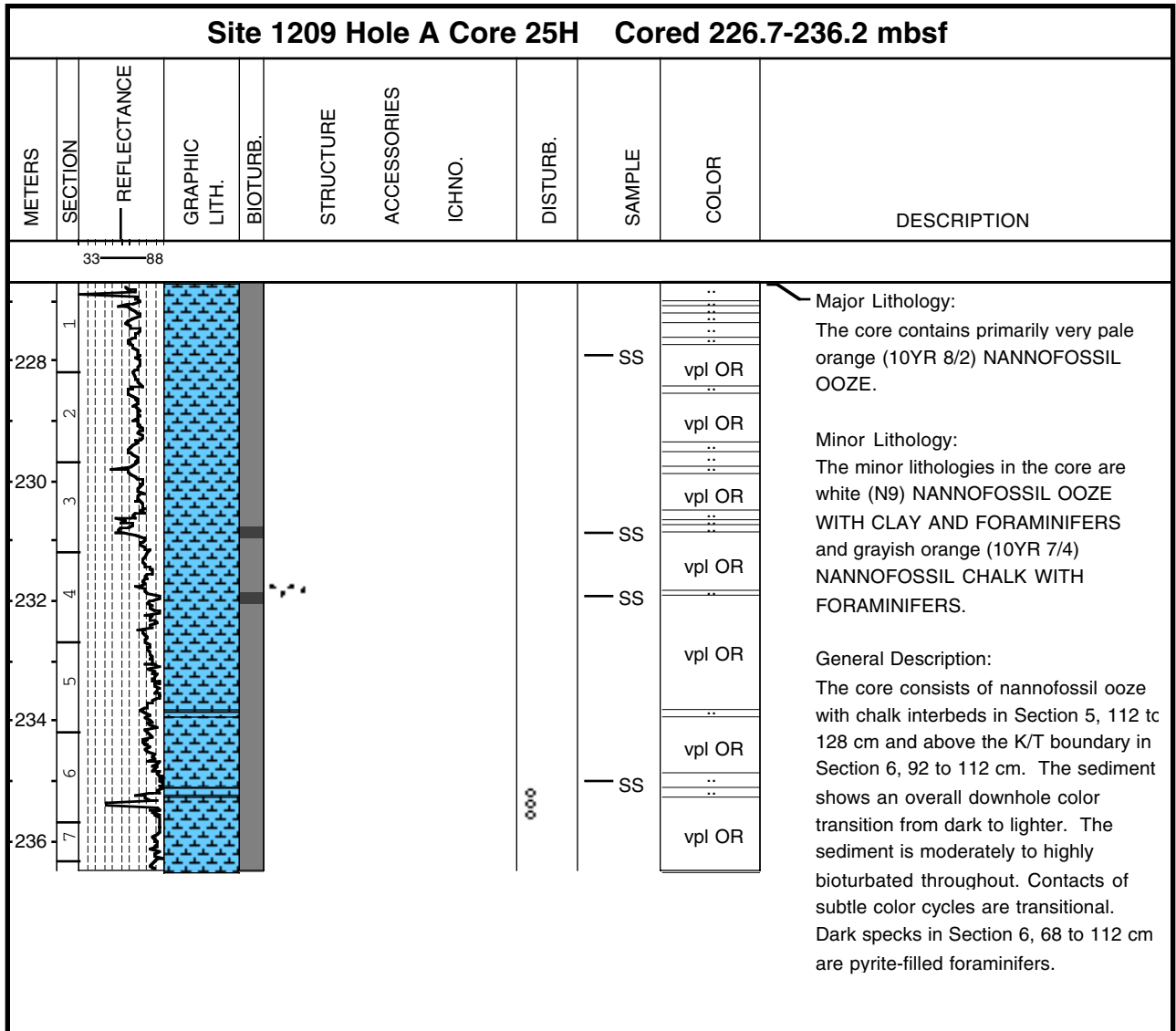
Core Photo

Site 1209 Hole A Core 17H Cored 150.7-160.2 mbsf											
METERS	SECTION	REFLECTANCE	GRAPHIC LITH.	BIOTURB.	STRUCTURE	ACCESSORIES	ICHNO.	DISTURB.	SAMPLE	COLOR	DESCRIPTION
152	1								SS CAR	gy OR	<p>Major Lithology: This core contains grayish orange (10YR 7/4) and very pale orange (10YR 8/2) NANNOFOSSIL OOZE WITH CLAY.</p> <p>Minor Lithology: In Sections 3, 34-35 cm, and 6, 70-80 cm, there are intervals with moderate yellowish brown NANNOFOSSIL OOZE WITH CLAY that are more stiff are present.</p> <p>General Description: Sediment is slightly disturbed by drilling (i.e., stretching and soupy). Bioturbation is mostly rare, but some moderately bioturbated intervals are present. Section 2, 22-34 cm, contains a U-shaped burrow. White blebs are scattered throughout this core. Intervals 29-35 cm and 40-46 cm in Section 5 are stiff and sticky.</p>
154	2										
156	3										
158	4									vpl OR	
160	5								SS CAR	gy OR vpl OR	
	6										
	7								CAR	gy OR	

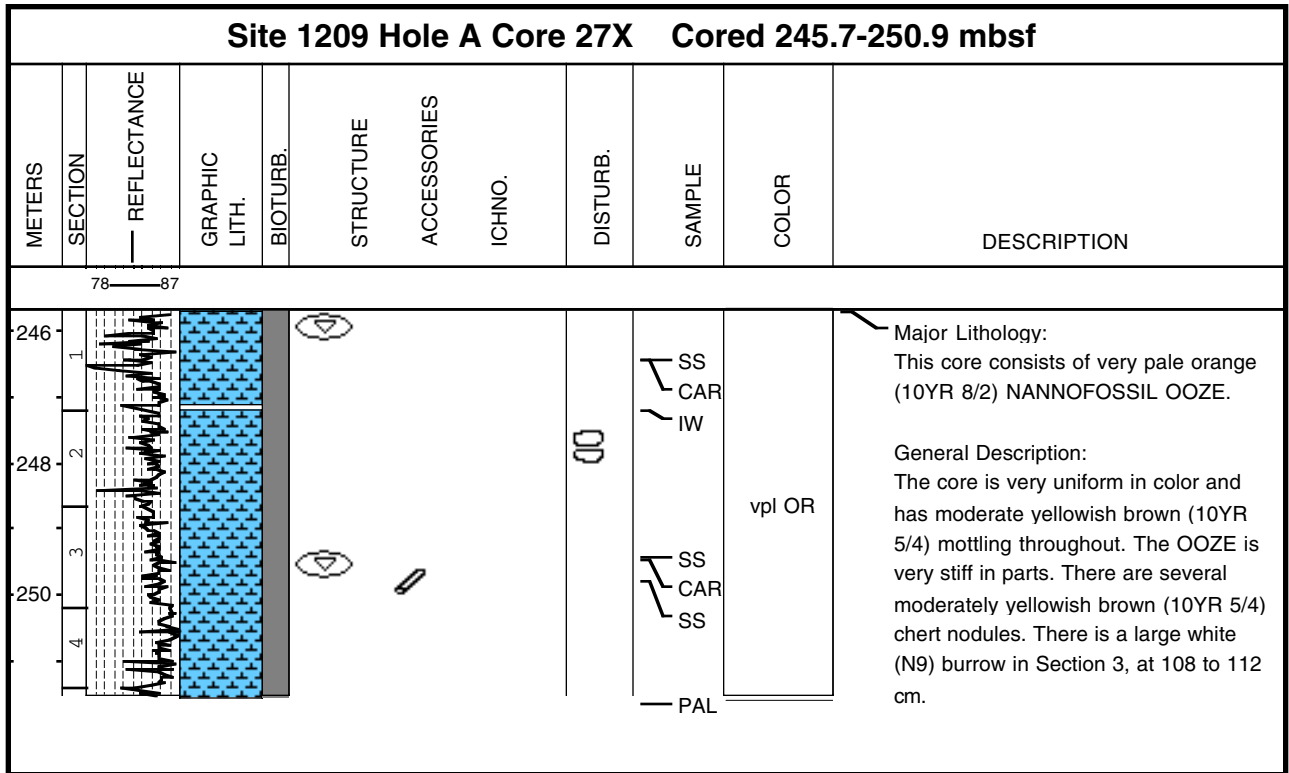
Core Photo

Site 1209 Hole A Core 22H Cored 198.2-207.7 mbsf										
METERS	SECTION	GRAPHIC LITH.	BIOTURB.	STRUCTURE	ACCESSORIES	ICHNO.	DISTURB.	SAMPLE	COLOR	DESCRIPTION
200	1							CAR SS XRD	vpl OR	
202	2								vpl OR	
204	3								vpl OR	
206	4								vpl OR	
	5								vpl OR	
	6								vpl OR	
	7								vpl OR	

Core Photo



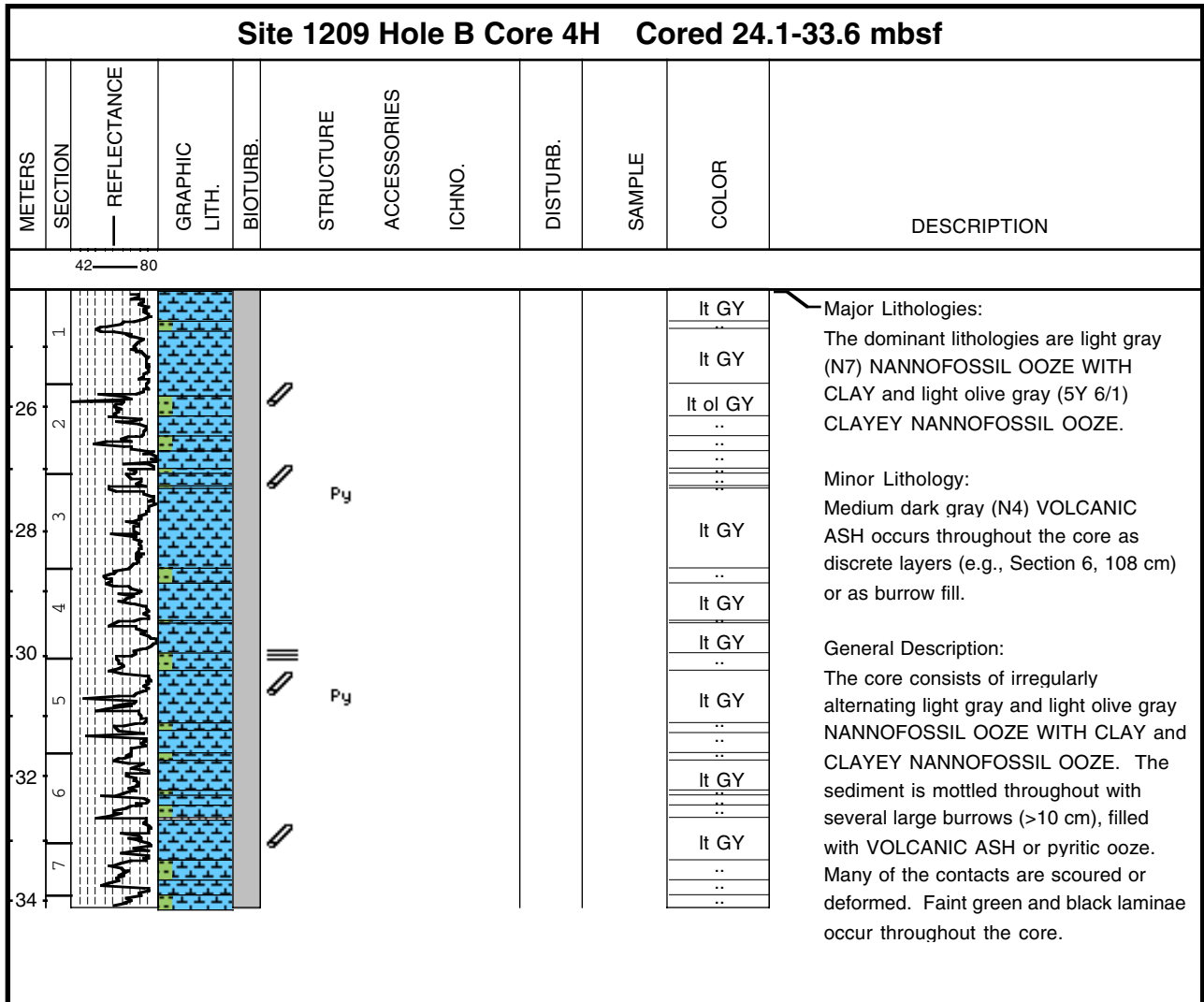
Core Photo



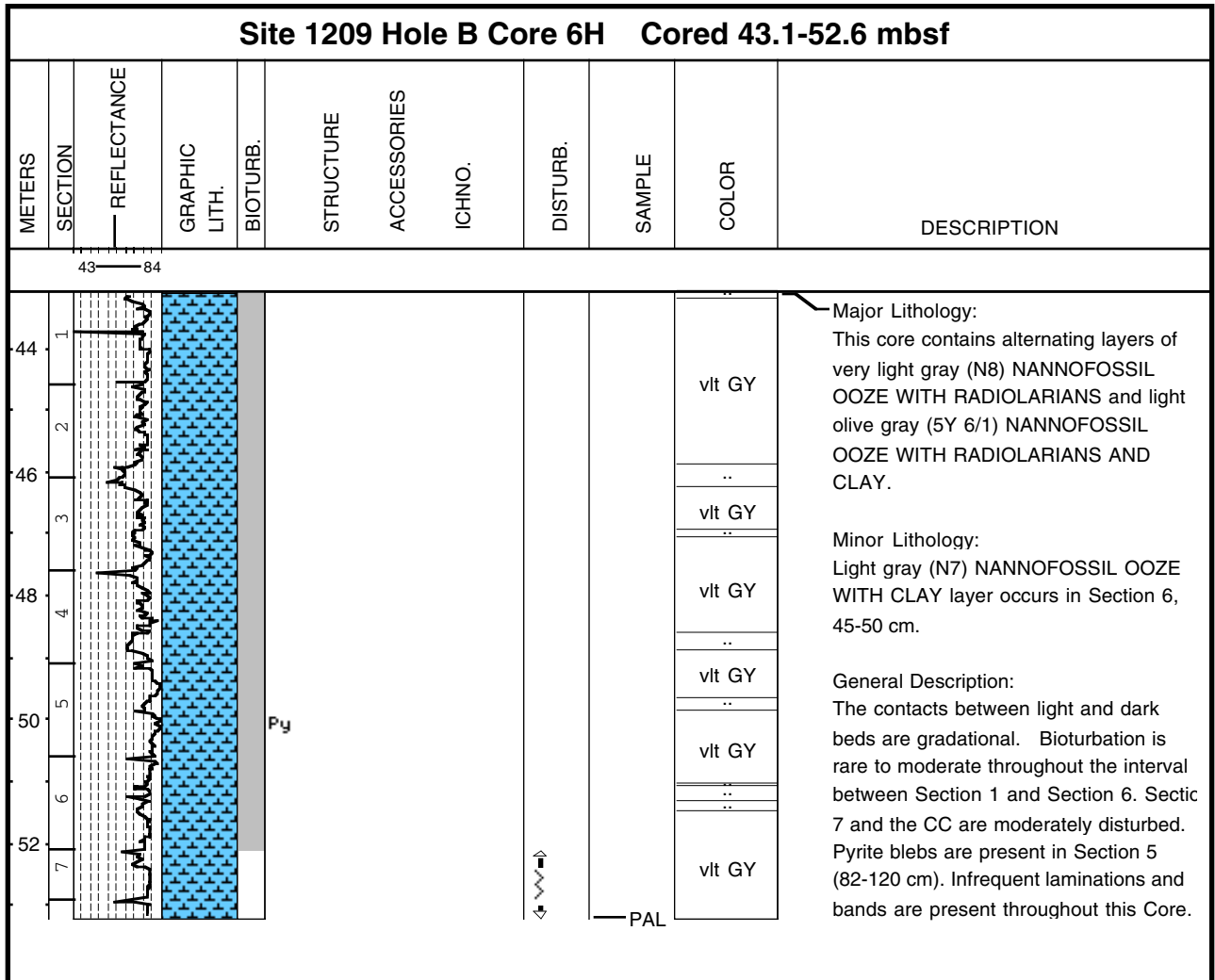
Core Photo

Site 1209 Hole A Core 28X Cored 250.9-259.6 mbsf											
METERS	SECTION	REFLECTANCE	GRAPHIC LITH.	BIOTURB.	STRUCTURE	ACCESSORIES	ICHNO.	DISTURB.	SAMPLE	COLOR	DESCRIPTION
		54 — 87								vpl OR	<p>Major Lithology: This core consists of stiff NANNOFOSSIL OOZE, which is very pale orange (10YR 9/2) with pale yellowish brown (10YR 6/2) mottles and indistinct bands, and a few mottles of white (N9) ooze.</p> <p>General Description: The sediment is fairly homogeneous throughout with respect to consistency and color, although mottled in places. It is firming up nearly to chalk. There is mild core disturbance consisting of slight biscuiting due to XCB coring.</p>

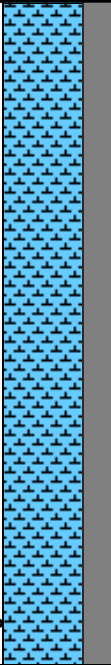
Core Photo



Core Photo



Core Photo

Site 1209 Hole B Core 7H Cored 52.6-62.1 mbsf											
METERS	SECTION	REFLECTANCE	GRAPHIC LITH.	BIOTURB.	STRUCTURE	ACCESSORIES	ICHNO.	DISTURB.	SAMPLE	COLOR	DESCRIPTION
54	1	55 — 85								vlt GY	<p>Major Lithology: The dominant lithology is very light gray (N8) NANNOFOSSIL OOZE to light olive gray (5Y 6/1) and light gray (N7) NANNOFOSSIL OOZE WITH CLAY.</p> <p>General Description: This core exhibits cyclical variations in color which become more subtle toward the base of the core. Bioturbation is rare to moderate and the color changes are gradational. A rare pyrite bleb was observed in Section 4 and two prominent green laminae were noted in Section 2. The upper 70 cm is slightly disturbed by drilling.</p>
56	2									vlt GY	
58	3									vlt GY	
60	4									vlt GY	
62	5									vlt GY	
	6									vlt GY	
	7									vlt GY	
<p>Py</p> <p>PAL</p>											

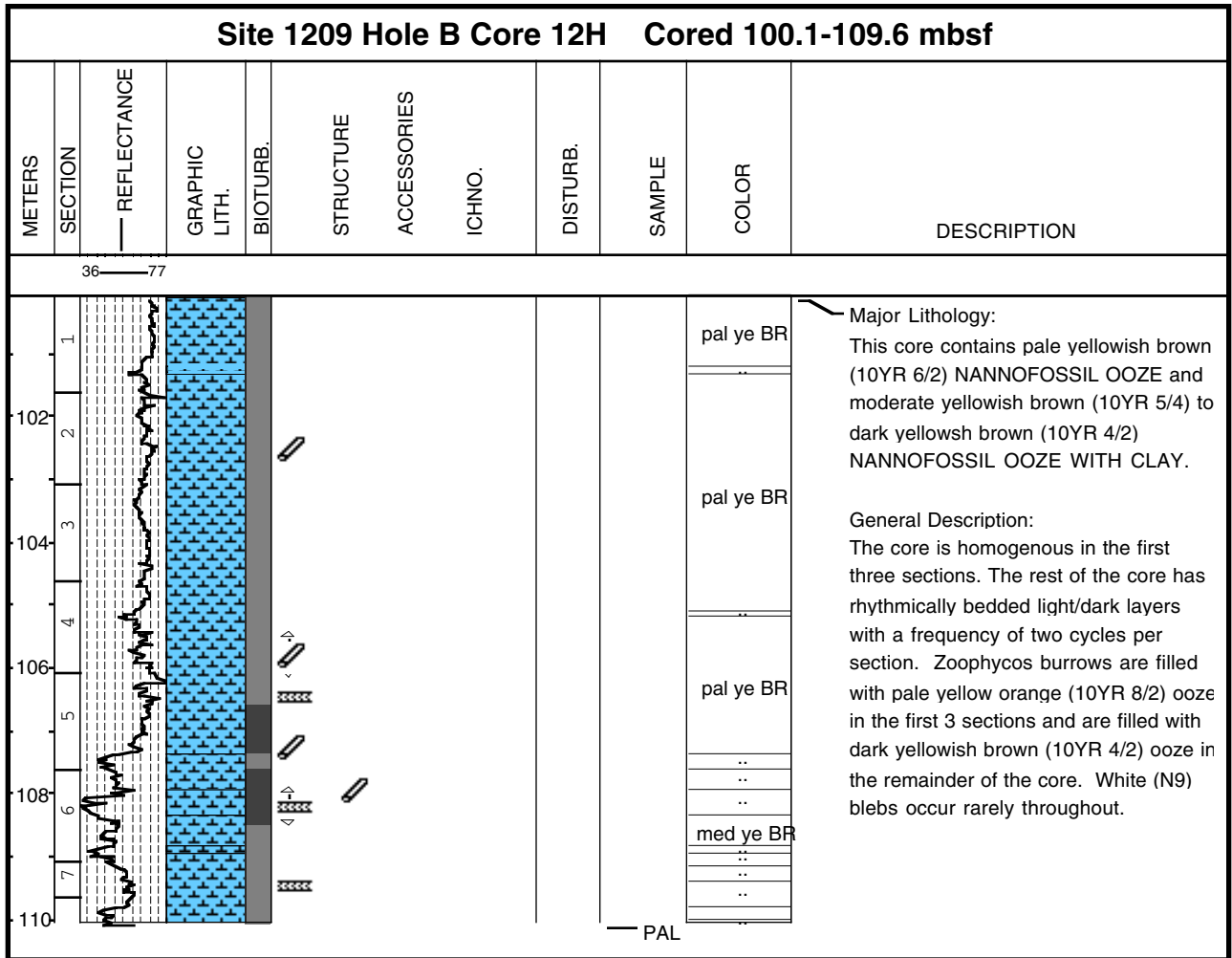
Core Photo

Site 1209 Hole B Core 8H Cored 62.1-71.6 mbsf											
METERS	SECTION	REFLECTANCE	GRAPHIC LITH.	BIOTURB.	STRUCTURE	ACCESSORIES	ICHNO.	DISTURB.	SAMPLE	COLOR	DESCRIPTION
64	1	59 84							WH		<p>Major Lithology: The core consists predominantly of white (N9), very light gray (N8) and yellowish gray (5Y 8/1) NANNOFOSSIL OOZE with thin interbeds of light gray (N7) and light olive gray (5Y 6/1) NANNOFOSSIL OOZE WITH CLAY.</p> <p>General Description: The core is rhythmically bedded with cycles of NANNOFOSSIL OOZE and NANNOFOSSIL OOZE WITH CLAY at a frequency of 3 cycles per section. Color changes between lithologies are gentle and commonly bioturbated. There are rare pyrite blebs in the core.</p>
66	2								lt GY		
68	3								ye GY		
70	4								lt ol GY		
71	5								WH		
71.5	6								ye GY		
72	7								ye GY		

Core Photo

Site 1209 Hole B Core 9H Cored 71.6-81.1 mbsf											
METERS	SECTION	REFLECTANCE	GRAPHIC LITH.	BIOTURB.	STRUCTURE	ACCESSORIES	ICHNO.	DISTURB.	SAMPLE	COLOR	DESCRIPTION
72	1									ye GY	<p>Major Lithology: This core contains white (N9) to yellowish gray (5Y 8/1, 5Y 7/2) NANNOFOSSIL OOZE.</p> <p>Minor Lithology: Pale yellowish brown (10YR 6/2) NANNOFOSSIL OOZE WITH CLAY.</p> <p>General Discription: This core contains alternating light-dark beds with grad ational contacts. Bioturbation is rare to common with discrete burrows and mottles. The core exhibits faint to distinct color banding (5-20 cm) usually with bioturbated contacts. Pumice clasts (0.5-2 cm) are present in Sections 3, 123 cm, and 5, 47-48 cm.</p>
74	2									pal ye BR ye GY	
76	3									ye GY	
78	4									..	
80	5									ye GY	
	6									ye GY	
	7									ye GY	
										..	
										— PAL	

Core Photo



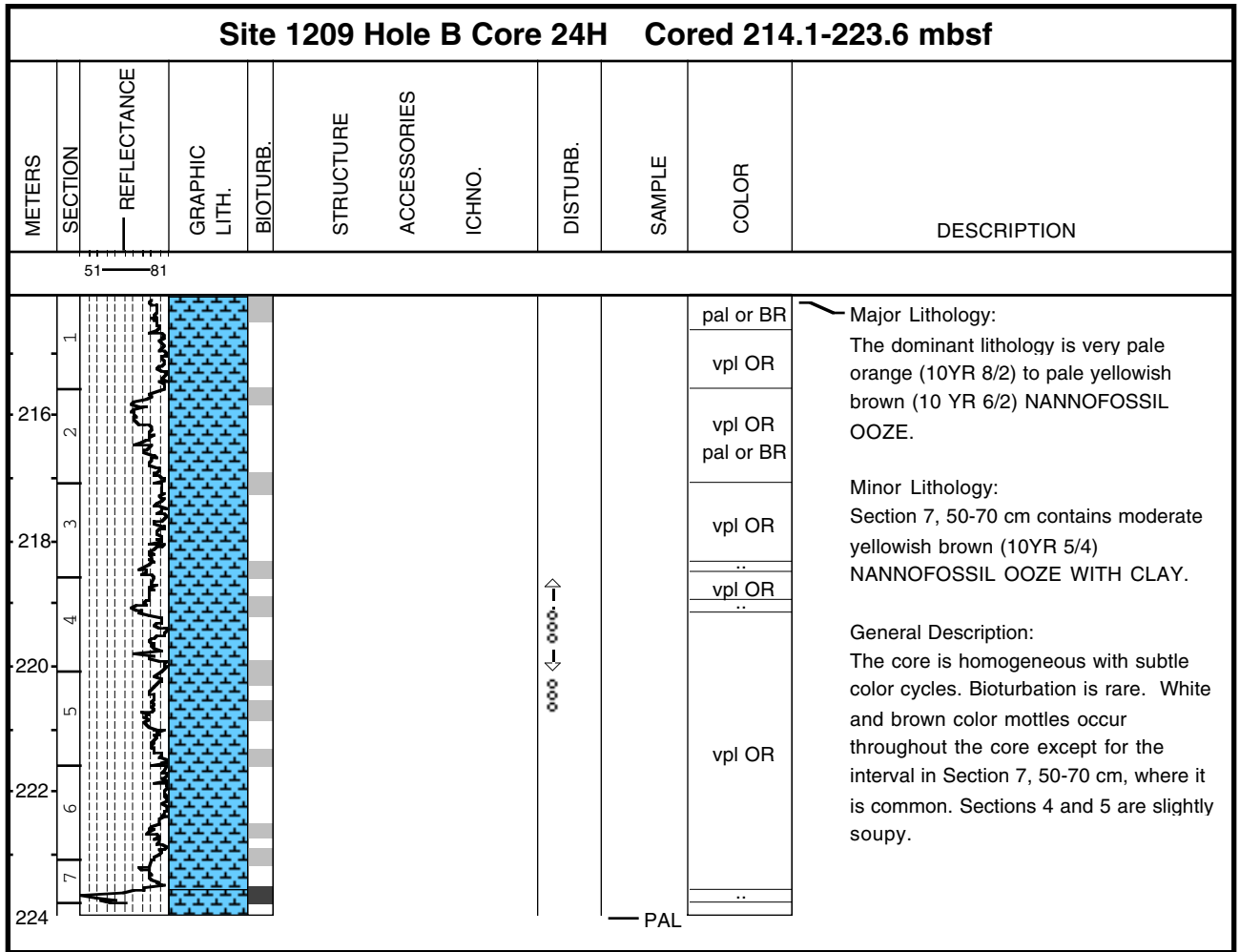
Core Photo

Site 1209 Hole B Core 16H Cored 138.1-147.6 mbsf											
METERS	SECTION	REFLECTANCE	GRAPHIC LITH.	BIOTURB.	STRUCTURE	ACCESSORIES	ICHNO.	DISTURB.	SAMPLE	COLOR	DESCRIPTION
		44 — 75									
140	1							ooo		vpl OR	<p>Major Lithology: This core consists of very pale orange (10YR 8/2), grayish orange (10YR 7/4) NANNOFOSSIL OOZE and moderate yellowish brown (10YR 5/4) NANNOFOSSIL OOZE WITH CLAY.</p> <p>Minor Lithology: A dark yellowish brown (10YR 4/2) CLAYEY NANNOFOSSIL OOZE layer is present at 115-128, in Section 1.</p> <p>General Description: The sediment in this core shows gradational color cycles the amplitudes of which decrease downcore. There is slight drilling disturbance in the form of stretching and soupy intervals (i.e., 95-115 cm in Section 1). Bioturbation is rare throughout. Several burrows are filled with white ooze.</p>
142	2								med ye BF	..	
144	3								vpl OR		
146	4								med ye BF	gy OR	
	5								vpl OR		
	6								med ye BF		
	7								vpl OR		
									PAL		

Core Photo

Site 1209 Hole B Core 21H Cored 185.6-195.1 mbsf											
METERS	SECTION	REFLECTANCE	GRAPHIC LITH.	BIOTURB.	STRUCTURE	ACCESSORIES	ICHNO.	DISTURB.	SAMPLE	COLOR	DESCRIPTION
186	1									vpl OR	<p>Major Lithology: The core consists of very pale orange (10YR 8/2), grayish orange (10YR 7/4) NANNOFOSSIL OOZE, and moderate yellowish brown (10 YR 5/4) NANNOFOSSIL OOZE WITH CLAY.</p> <p>General Description: The sediment is characterized by subtle color cycles with gradational contacts superimposed on a gradual downhole trend toward darker hues. The core is slightly soupy throughout. Bioturbation rare, with the exception of a moderately bioturbated interval in Section 5. Cm-scale burrows are filled with white ooze.</p>
188	2								vpl OR gy OR		
190	3								vpl OR		
192	4								vpl OR ..		
194	5								vpl OR		
	6								vpl OR gy OR		
	7								..		
									PAL		

Core Photo

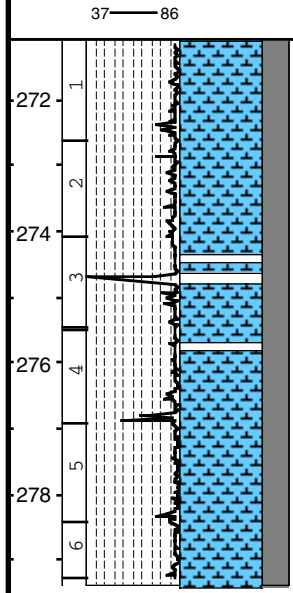


Core Photo

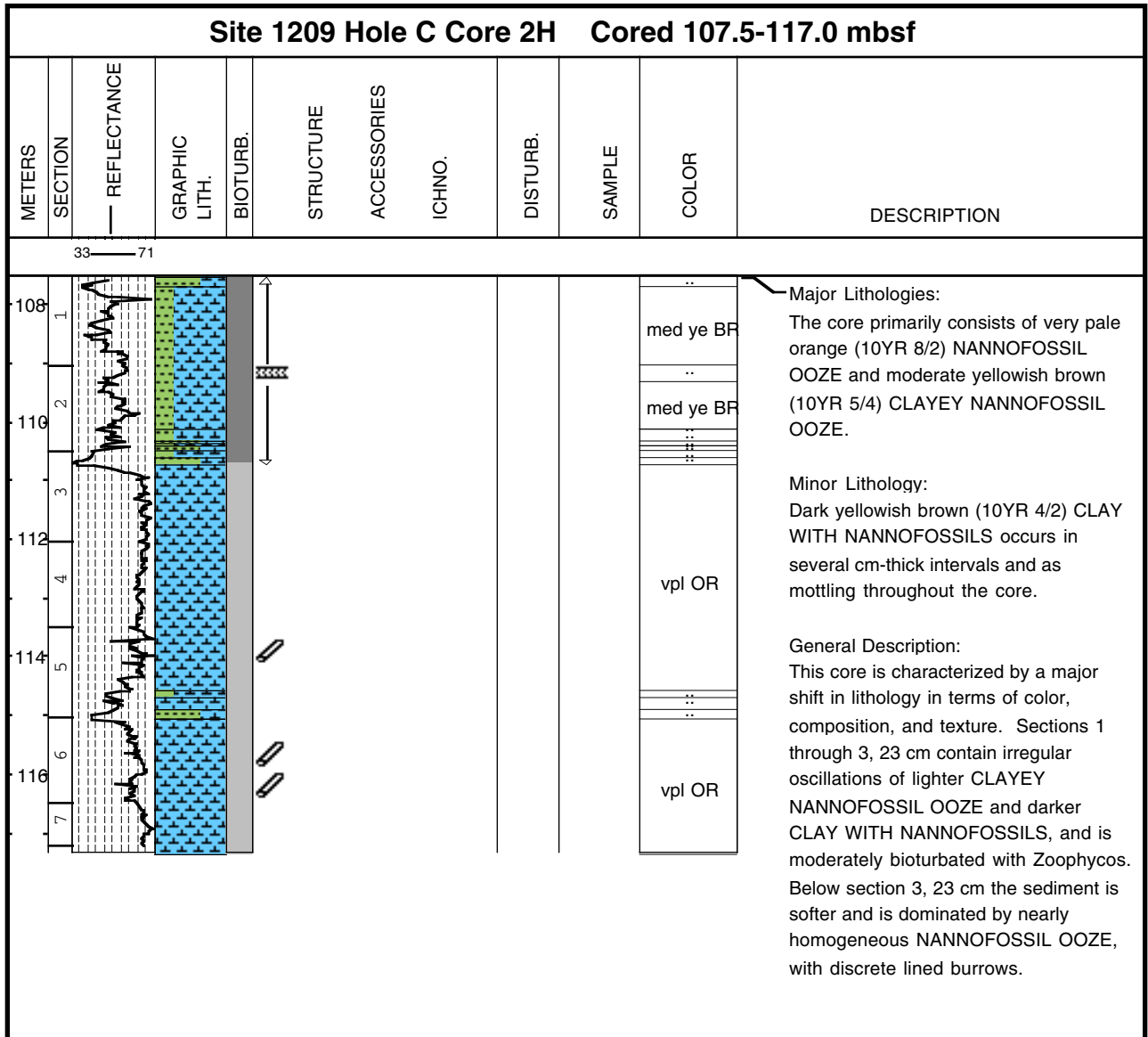
Site 1209 Hole B Core 27H Cored 242.6-252.1 mbsf											
METERS	SECTION	REFLECTANCE	GRAPHIC LITH.	BIOTURB.	STRUCTURE	ACCESSORIES	ICHNO.	DISTURB.	SAMPLE	COLOR	DESCRIPTION
		77 — 87									
244	1										<p>Major Lithology: The lithology is predominantly very pale orange (10YR 8/2) NANNOFOSSIL OOZE.</p> <p>General Description: The lithology is relatively uniform in color and composition, and faintly mottled with somewhat darker pale orange and rare white mottles of 3 cm diameter. Inoceramid shell fragments occur in Section 3, 45 cm. Moderate "bowing" of layers occurs due to coring disturbance in the upper parts of Sections 5 and 6.</p>
246	2										
248	3										
250	4										
252	5										
	6										
	7										
									vpl OR		

Core Photo

Site 1209 Hole B Core 30H Cored 271.1-280.6 mbsf											
METERS	SECTION	REFLECTANCE	GRAPHIC LITH.	BIOTURB.	STRUCTURE	ACCESSORIES	ICHNO.	DISTURB.	SAMPLE	COLOR	DESCRIPTION
272	1										<p>Major Lithology: The dominant lithology in this core is very pale orange (10YR 8/2) NANNOFOSSIL OOZE.</p> <p>General Description: The lithology is extremely uniform with respect to color and composition. Slight mottling of moderate yellowish brown (10YR 8/2) is common throughout the core. Rare burrows are filled with white (N9) ooze.</p>
274	2										
	3										
276	4								vpl OR		
278	5										
	6										
										PAL	



Core Photo



Core Photo

Site 1209 Hole C Core 3H Cored 117.0-126.5 mbsf											
METERS	SECTION	REFLECTANCE	GRAPHIC LITH.	BIOTURB.	STRUCTURE	ACCESSORIES	ICHNO.	DISTURB.	SAMPLE	COLOR	DESCRIPTION
		61 — 77									
118	1									gy OR	Major Lithology: This core consists of very pale orange (10YR 8/2) to grayish orange (10YR 7/4) NANNOFOSSIL OOZE. General Description: This core shows an overall downhole transition from darker to lighter hues. The OOZE is very homogeneous and rarely bioturbated with a few white and moderate yellowish brown (10YR 5/4) blebs. Sections 3 and 4 are slightly soupy.
120	2									gy OR vpl OR	
122	3									vpl OR	
124	4										
126	5										
	6										
									PAL		

Core Photo

Site 1209 Hole C Core 5H Cored 136.0-145.5 mbsf											
METERS	SECTION	REFLECTANCE	GRAPHIC LITH.	BIOTURB.	STRUCTURE	ACCESSORIES	ICHNO.	DISTURB.	SAMPLE	COLOR	DESCRIPTION
26	76										
138	1								vpl OR		<p>Major Lithology: The dominant lithology is a very pale orange (10YR 8/2) NANNOFOSSIL OOZE</p> <p>Minor Lithology: Moderate to dark yellowish brown (10YR 5/4 to 4/2) NANNOFOSSIL OOZE with CLAY and CLAYEY NANNOFOSSIL OOZE</p> <p>General Description: The upper portion of the core is relatively uniform. From section 3 down, there are color cycles of light to somewhat darker intervals with gradational contacts. Rare, large, indistinct burrows or mottles (to 2 cm diameter) of white to very pale orange do occur throughout.</p>
140	2								pal ye BR		
142	3								vpl OR		
144	4										
	5										
	6										
	7								vpl OR		

Core Photo

Site 1209 Hole C Core 7H Cored 155.0-164.5 mbsf											
METERS	SECTION	REFLECTANCE	GRAPHIC LITH.	BIOTURB.	STRUCTURE	ACCESSORIES	ICHNO.	DISTURB.	SAMPLE	COLOR	DESCRIPTION
156	1									gy OR vpl OR	<p>Major Lithology: This core contains grayish orange (10YR 7/4), very pale orange (10YR 8/2) and moderate yellowish brown (10YR 5/4) NANNOFOSSIL OOZE.</p> <p>General Description: The sediment exhibits distinct decimeter-scale color cycles with gradational contacts. Bioturbation is rare throughout. Most of burrows are filled with very pale orange (10YR 8/2) OOZE. Some burrows are surrounded by yellowish brown (10YR 6/2) OOZE. Some intervals of the core are slightly soupy.</p>
158	2										
160	3										
162	4										
164	5									gy OR vpl OR	
	6										
	7										

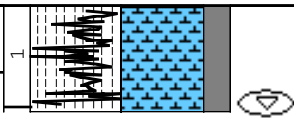
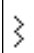
Core Photo

Site 1209 Hole C Core 8H Cored 164.5-174.0 mbsf											
METERS	SECTION	REFLECTANCE	GRAPHIC LITH.	BIOTURB.	STRUCTURE	ACCESSORIES	ICHNO.	DISTURB.	SAMPLE	COLOR	DESCRIPTION
166	1	55									<p>Major Lithology: This core contains primarily grayish orange (10YR 7/4) NANNOFOSSIL OOZE.</p> <p>Minor Lithology: Thin beds of moderate yellowish brown (10YR 5/4) NANNOFOSSIL OOZE WITH CLAY occurs in Section 1, 13-16 cm and Section 6, 68-74 cm.</p> <p>General Description: The sediment is relatively uniform in color and composition. Bioturbation is rare to moderate.</p>
168	2	76									
170	3										
172	4										
	5										
	6										
									gy OR		
									gy OR		

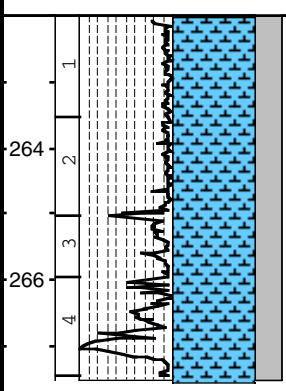
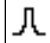
Core Photo

Site 1209 Hole C Core 10H Cored 183.5-193.0 mbsf											
METERS	SECTION	Reflectance	GRAPHIC LITH.	BIOTURB.	STRUCTURE	ACCESSORIES	ICHNO.	DISTURB.	SAMPLE	COLOR	DESCRIPTION
184	1									gy OR	<p>Major Lithology: This core consists of NANNOFOSSIL OOZE which varies in color from very pale orange (10YR 8/2) to grayish orange (10YR 7/4).</p> <p>General Description: The lithology is relatively uniform with very subtle color cycles. Some sections are slightly soupy. Color transitions are gradational. Bioturbation is rare throughout this core. Some burrows are filled with white ooze and surrounded by dark yellowish brown ooze.</p>
186	2									vpl OR gy OR	
188	3									..	
190	4									vpl OR	
192	5									vpl OR	
	6									..	
	7									gy OR	
										vpl OR gy OR	
										vpl OR	

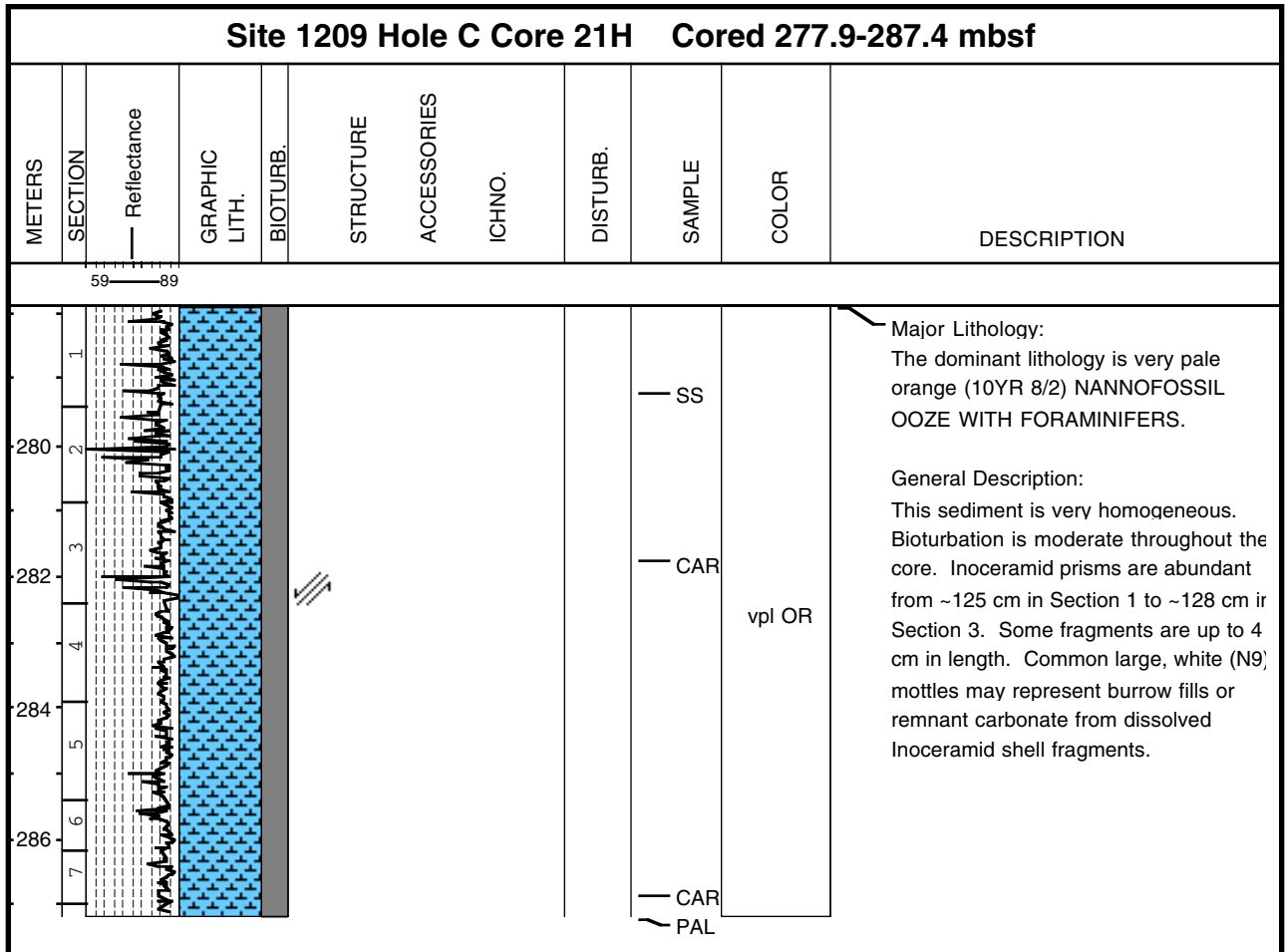
Core Photo

Site 1209 Hole C Core 17H Cored 250.0-251.5 mbsf											
METERS	SECTION	Reflectance	GRAPHIC LITH.	BIOTURB.	STRUCTURE	ACCESSORIES	ICHNO.	DISTURB.	SAMPLE	COLOR	DESCRIPTION
82.4 — 85.5									PAL	vpl OR	<p>Major Lithology: The core consists of homogeneous very pale orange (10YR 8/2) NANNOFOSSIL OOZE with slight burrow mottling.</p> <p>Minor Lithology: The working half of the core contains a fragment (5 cm) dark yellowish brown (10YR 4/2) with a very pale orange (10YR 4/2) chalky rim.</p>

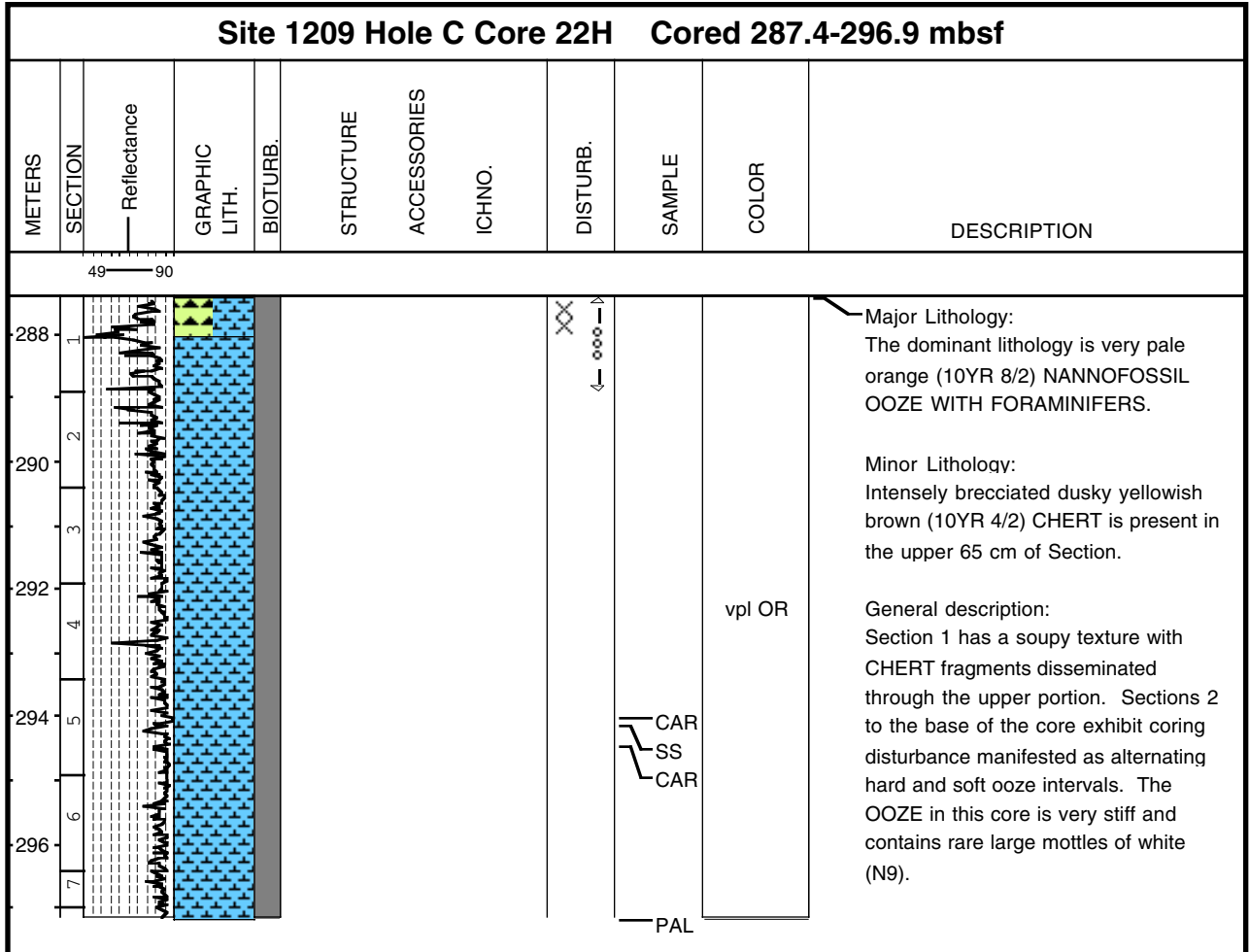
Core Photo

Site 1209 Hole C Core 19H Cored 262.0-264.9 mbsf											
METERS	SECTION	Reflectance	GRAPHIC LITH.	BIOTURB.	STRUCTURE	ACCESSORIES	ICHNO.	DISTURB.	SAMPLE	COLOR	DESCRIPTION
		50 — 83								vpl OR	<p>Major Lithology: The core consists of very pale orange (10YR 8/2) NANNOFOSSIL OOZE, which is mottled throughout with white and grayish orange burrow fill.</p> <p>Minor Lithology: Dusky yellowish brown CHERT occurs in Section 1, 2-4 cm.</p> <p>General Description: Section 2, 141-152 cm is marred by flow-in, and all of Section 4 is soupy.</p>

Core Photo



Core Photo



1209C-23X NO RECOVERY

