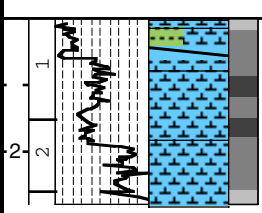
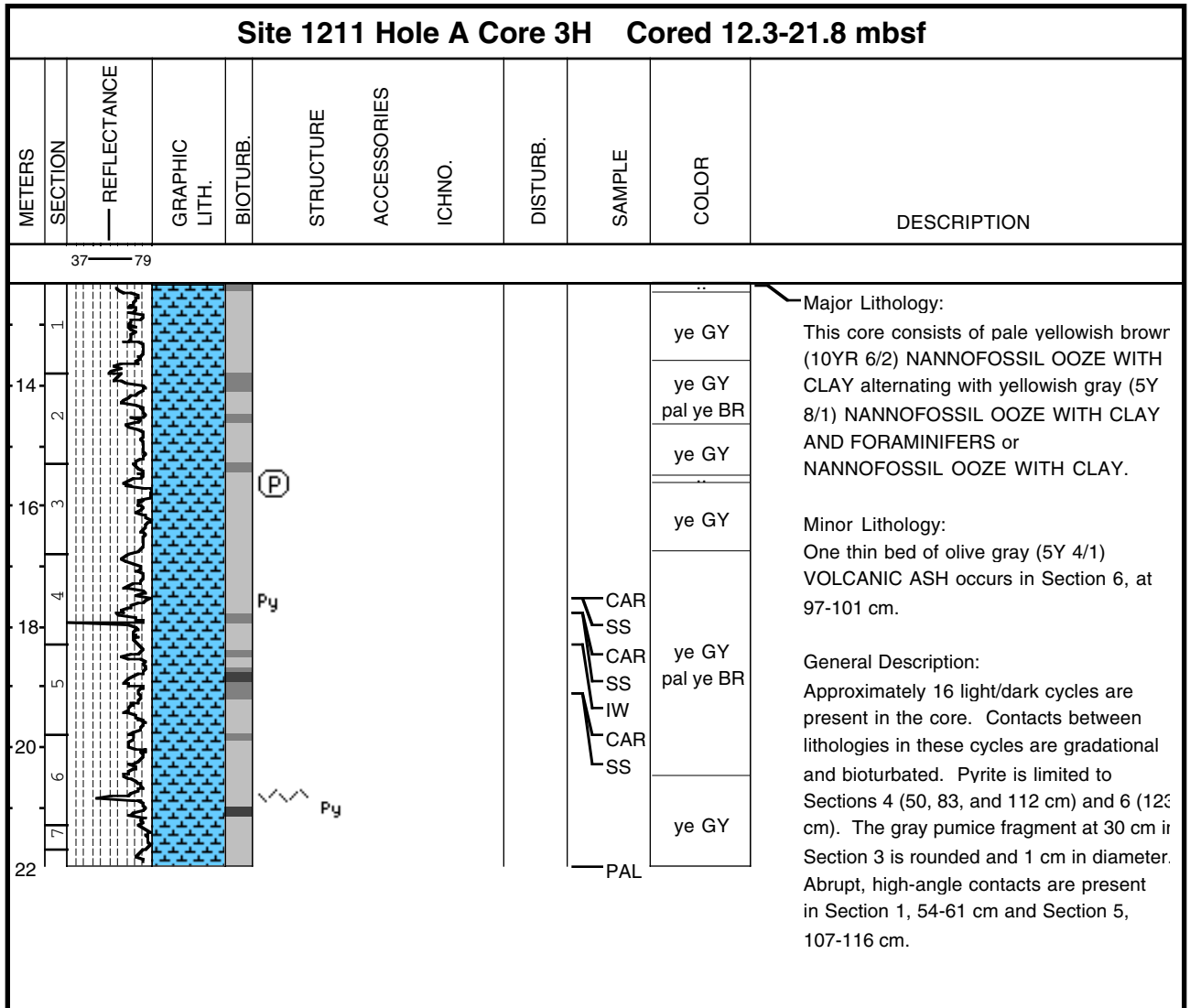


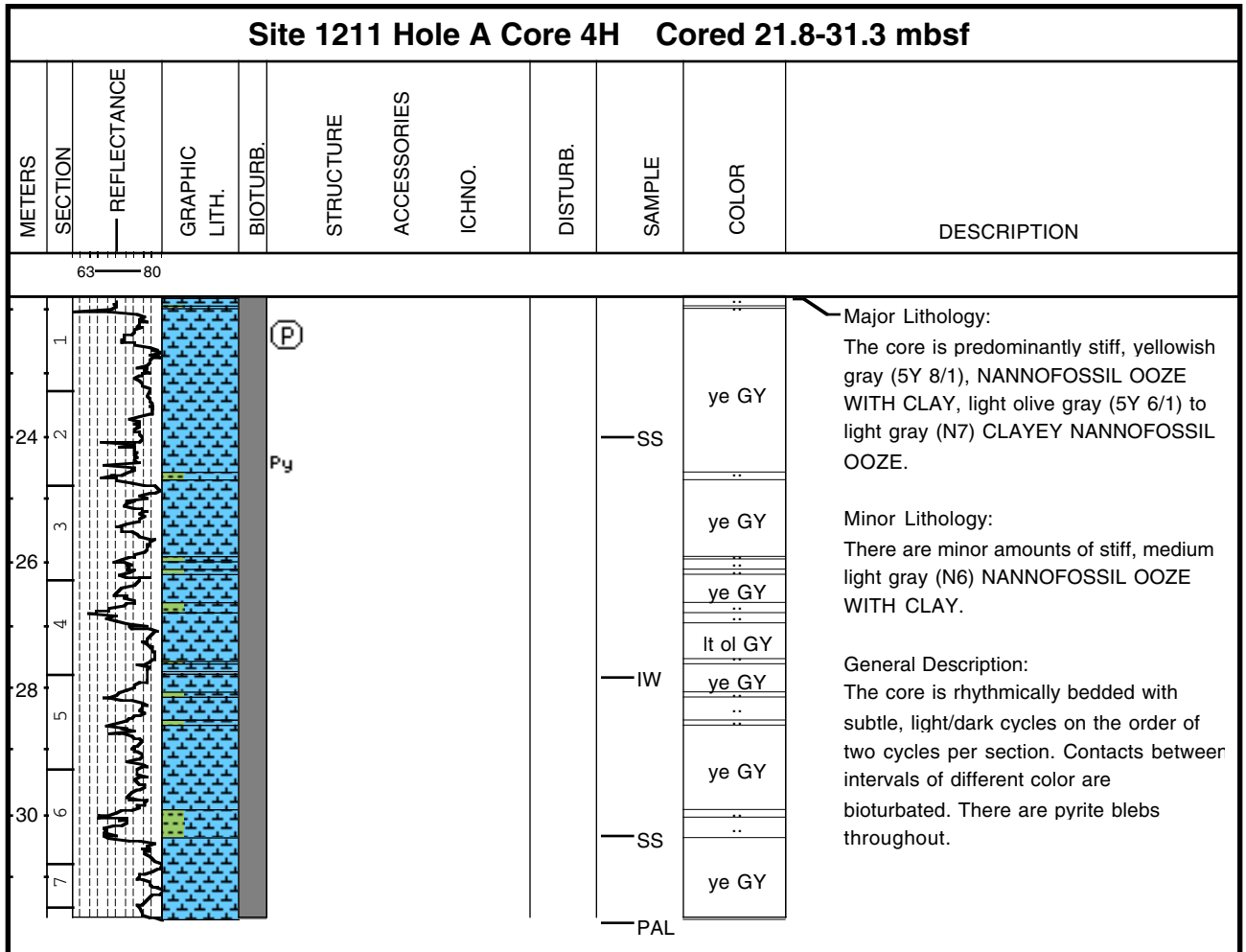
Core Photo

| Site 1211 Hole A Core 1H Cored 0.0-2.8 mbsf | | | | | | | | | | | |
|---|---------|-------------|---|----------|-----------|-------------|--------|----------|--------|-------|--|
| METERS | SECTION | REFLECTANCE | GRAPHIC LITH. | BIOTURB. | STRUCTURE | ACCESSORIES | ICHNO. | DISTURB. | SAMPLE | COLOR | DESCRIPTION |
| | | 49 — 71 |  | | | | | | | | <p>Major Lithology: The core consists of pale to moderate yellowish brown (10YR 6/2, 5/2) NANNOFOSSIL OOZE WITH CLAY.</p> <p>Minor Lithology: Light olive gray (5Y 5/2) CLAYEY NANNOFOSSIL OOZE WITH DIATOMS is present in Section 1, 19-55 cm, and as mottles throughout the core.</p> <p>General Description: Bioturbation is rare to common with color mottling and discrete burrows. Two high angle contacts are present: a sharp one in Section 1, 55-60 cm, and one more faint in Section 2, 37-39 cm.</p> |

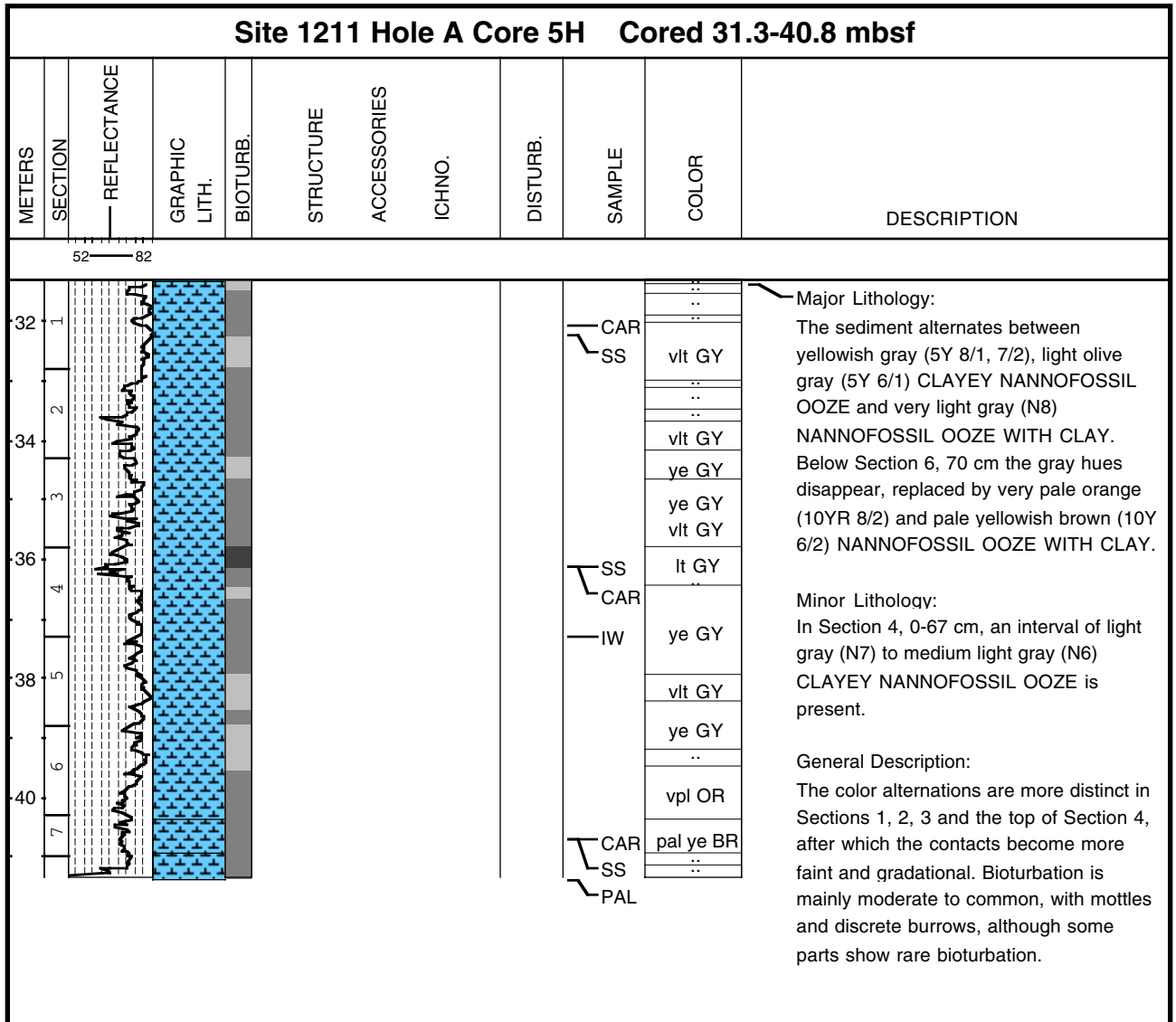
Core Photo



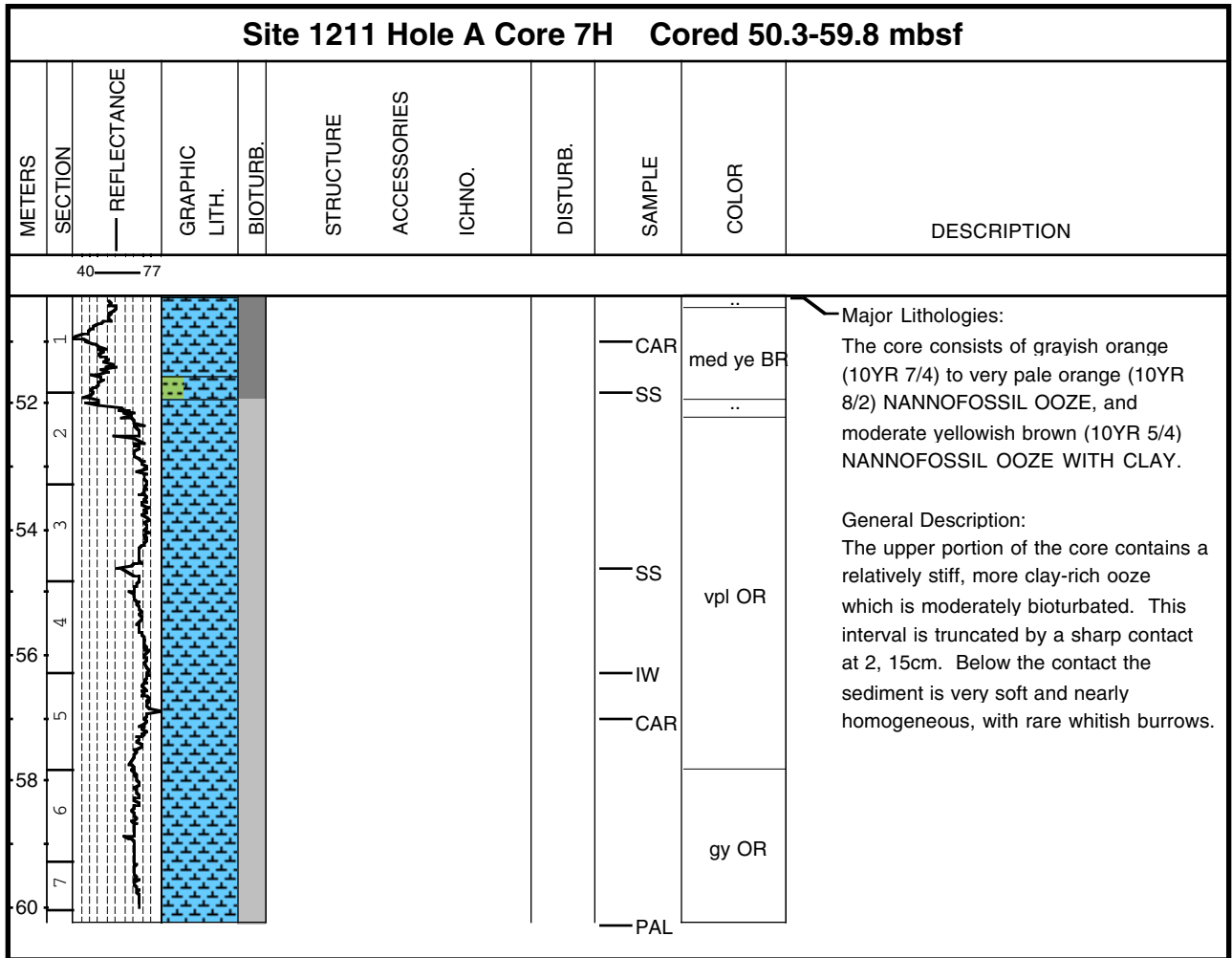
Core Photo



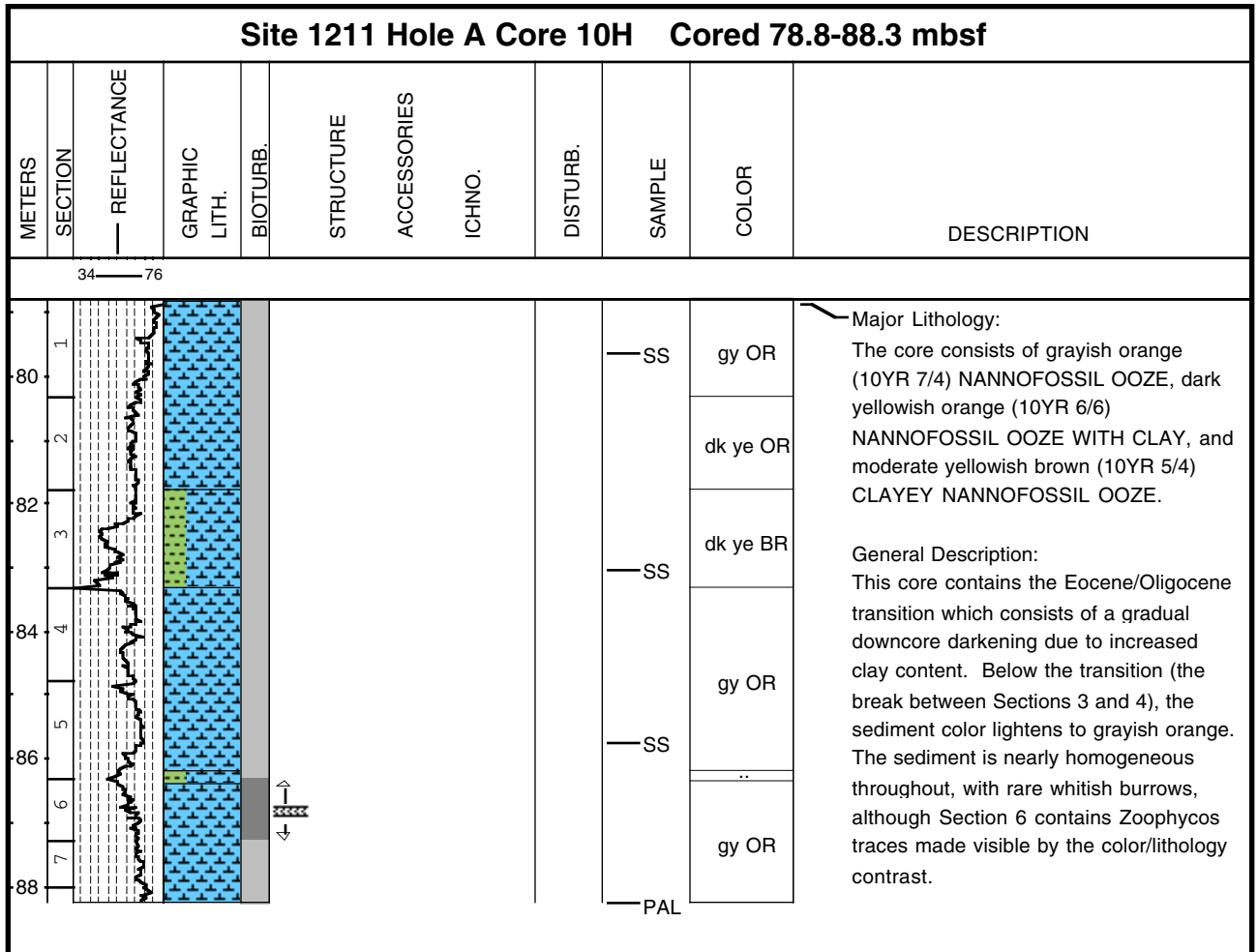
Core Photo



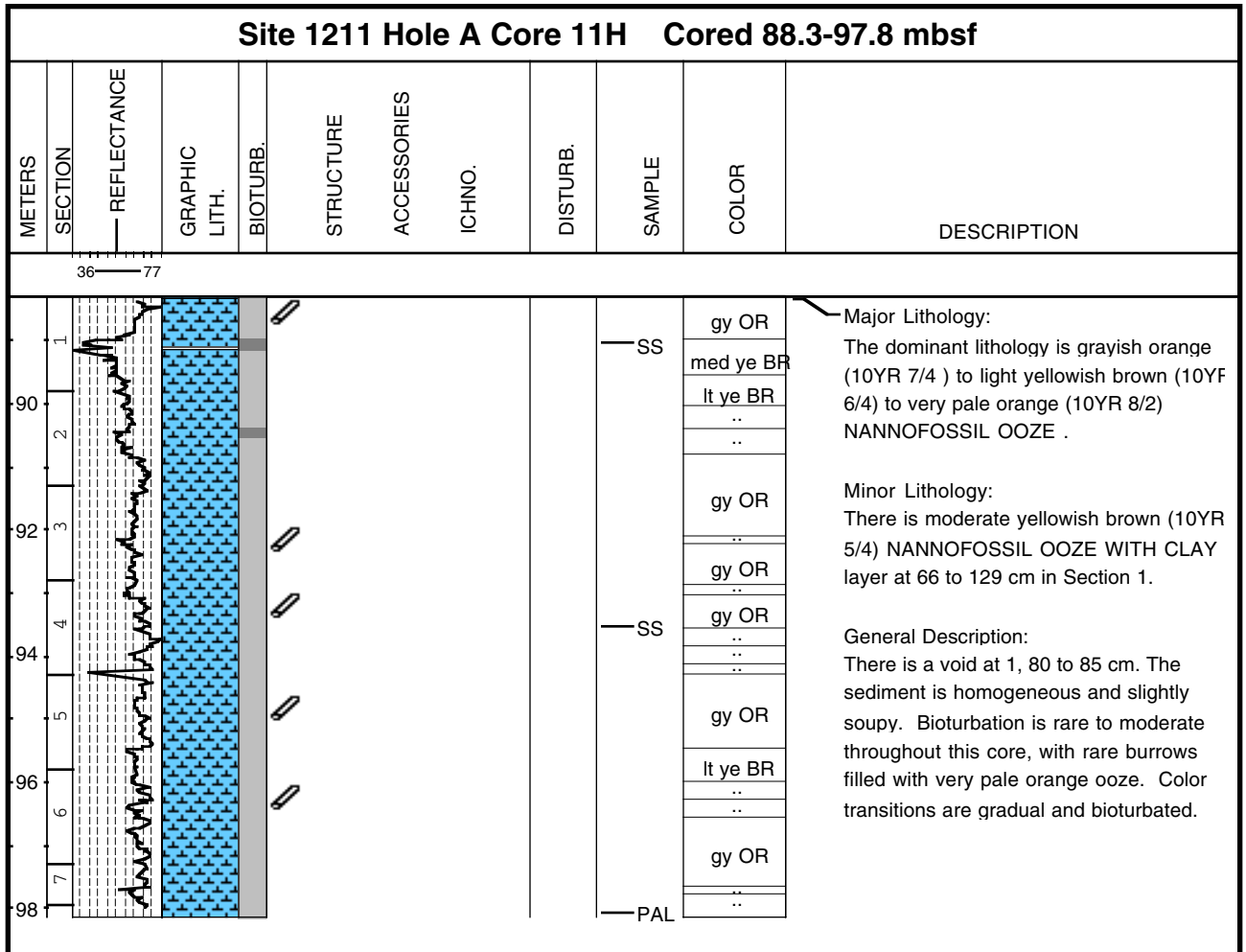
Core Photo



Core Photo



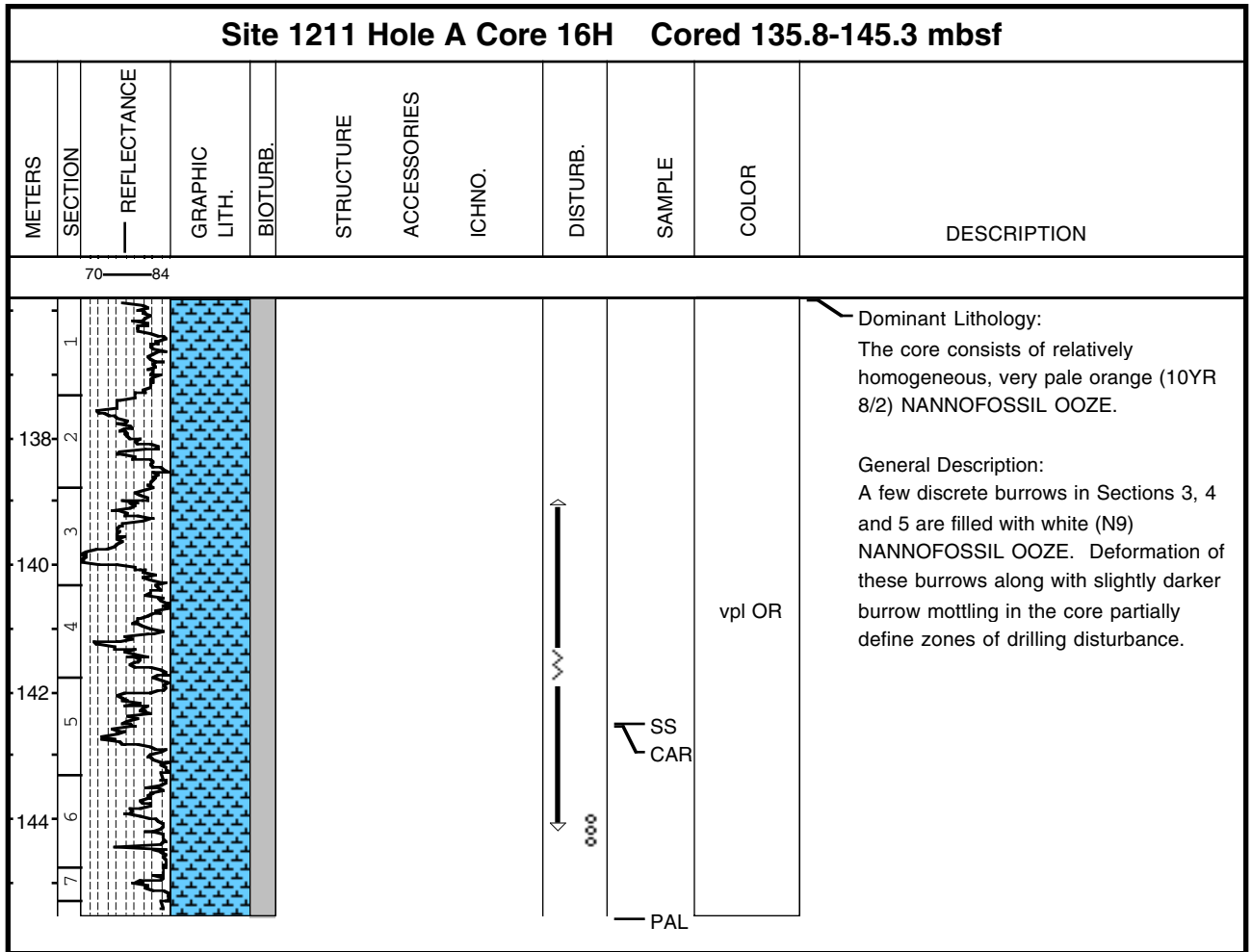
Core Photo



Core Photo

| Site 1211 Hole A Core 13H Cored 107.3-116.8 mbsf | | | | | | | | | | | |
|--|---------|-------------|---------------|----------|-----------|-------------|--------|----------|--------|-------|--|
| METERS | SECTION | REFLECTANCE | GRAPHIC LITH. | BIOTURB. | STRUCTURE | ACCESSORIES | ICHNO. | DISTURB. | SAMPLE | COLOR | DESCRIPTION |
| | | 50 — 75 | | | | | | | | | |
| 108 | 1 | | | | | | | | SS | gy OR | <p>Major Lithology: The dominant lithology is grayish orange (10YR 7/4) NANNOFOSSIL OOZE WITH CLAY.</p> <p>Minor Lithology: Minor lithology is moderate yellowish brown (10YR 5/4) CLAYEY NANNOFOSSIL OOZE .</p> <p>General Description: Rare bioturbation is observed as very pale orange (10YR 8/2) mottles. The ooze is mostly homogenous. Color transitions are gradational. The base of the darker interval near the top of Section 6 (2-13 cm) is slightly inclined and mottled.</p> |
| 110 | 2 | | | | | | | | CAR | | |
| 112 | 3 | | | | | | | | | gy OR | |
| 114 | 4 | | | | | | | | CAR | | |
| 116 | 5 | | | | | | | | SS | gy OR | |
| | 6 | | | | | | | | | gy OR | |
| | 7 | | | | | | | | | gy OR | |
| | | | | | | | | | PAL | | |

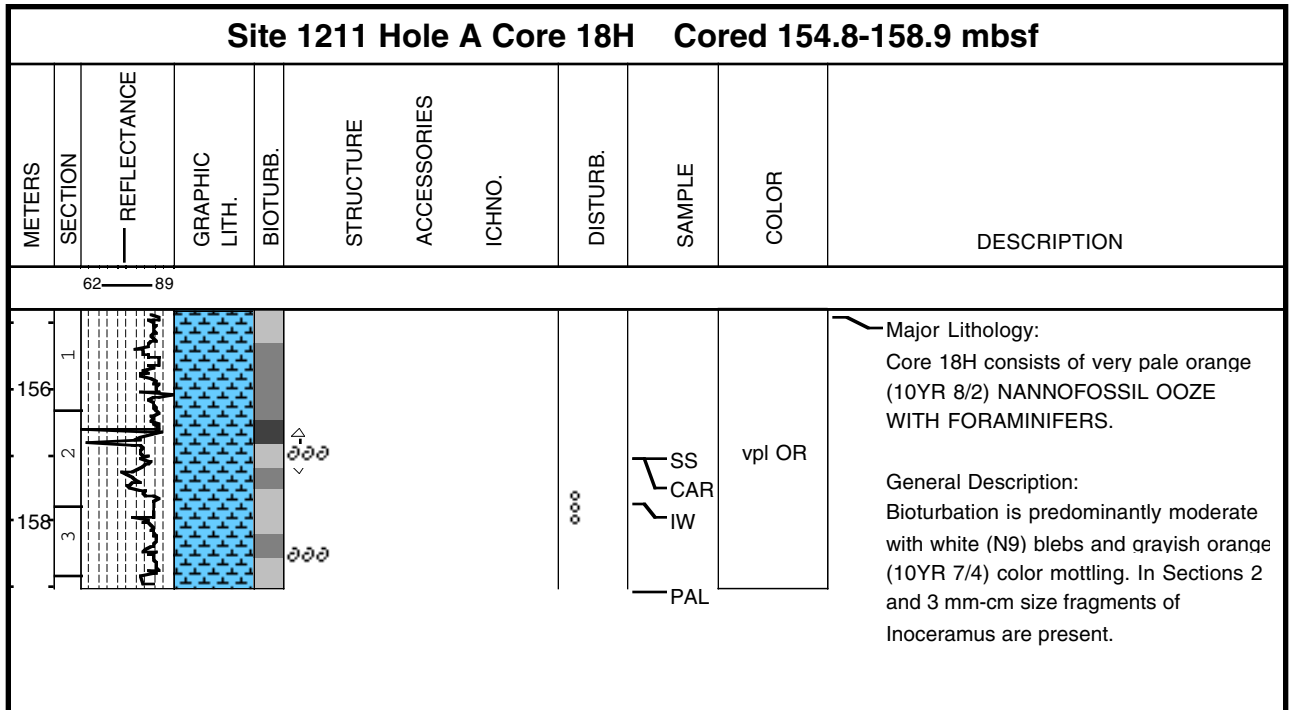
Core Photo



Core Photo

| Site 1211 Hole A Core 17H Cored 145.3-154.8 mbsf | | | | | | | | | | | |
|--|---------|-------------|---------------|----------|-----------|-------------|--------|----------|-----------|------------------------------|---|
| METERS | SECTION | REFLECTANCE | GRAPHIC LITH. | BIOTURB. | STRUCTURE | ACCESSORIES | ICHNO. | DISTURB. | SAMPLE | COLOR | DESCRIPTION |
| 74 — 92 | | | | | | | | | | | |
| 146 | 1 | | | | | | | | SS CAR | | <p>Major Lithology: The core primarily consists of very pale orange (10YR 8/2) and grayish orange (10YR 7/4) NANNOFOSSIL CLAY.</p> <p>General Description: There are very subtle light/dark cycles in the core from the top of Section 5 downwards, that have a frequency of four cycles per section.</p> |
| 148 | 2 | | | | | | | | | vpl OR | |
| 150 | 3 | | | | | | | | | | |
| 152 | 4 | | | | | | | | | | |
| 154 | 5 | | | | | | | | | .. | |
| | 6 | | | | | | | | SS CAR | vpl OR .. vpl OR .. | |
| | 7 | | | | | | | | | vpl OR | |
| | | | | | | | | | PAL | | |

Core Photo



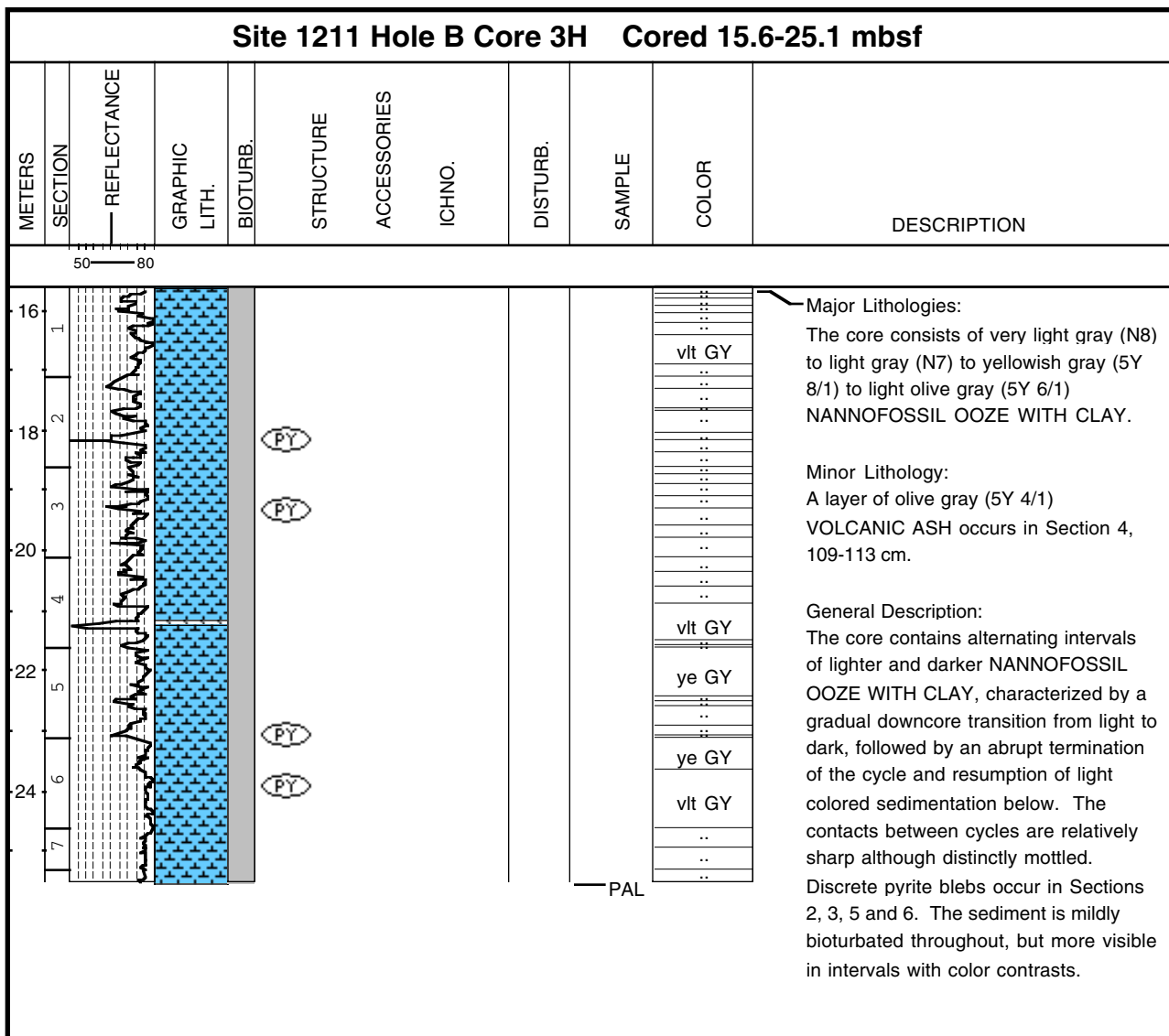
Core Photo

| Site 1211 Hole B Core 1H Cored 0.0-6.1 mbsf | | | | | | | | | | | |
|---|---------|-------------|---------------|----------|-----------|-------------|--------|----------|--------|-----------|--|
| METERS | SECTION | REFLECTANCE | GRAPHIC LITH. | BIOTURB. | STRUCTURE | ACCESSORIES | ICHNO. | DISTURB. | SAMPLE | COLOR | DESCRIPTION |
| 47 | 80 | | | | | | | | | | |
| 1 | | | | | | | | | | pal ye BR | <p>Major Lithology: The core consists of pale yellowish brown (10YR 6/2) to very pale orange (10YR 8/2) to grayish orange (10YR 7/4) NANNOFOSSIL OOZE WITH CLAY, yellowish gray (5Y 8/1) and light olive gray (5Y 6/1) CLAYEY NANNOFOSSIL OOZE, and moderate yellowish brown (10YR 5/4) to dark yellowish gray (10YR 4/2) NANNOFOSSIL CLAY.</p> <p>General Description: Contacts between lithologies are gradational to bioturbated. Two irregular contacts are present in Section 1 at 30 to 50 cm. Very faint color banding is present in Section 4.</p> |
| 2 | | | | | | | | | | pal ye BR | |
| 3 | | | | | | | | | | vpl OR | |
| 4 | | | | | | | | | | pal ye BR | |
| 5 | | | | | | | | | | ye GY | |
| 6 | | | | | | | | | | lt ol GY | |
| | | | | | | | | | PAL | | |

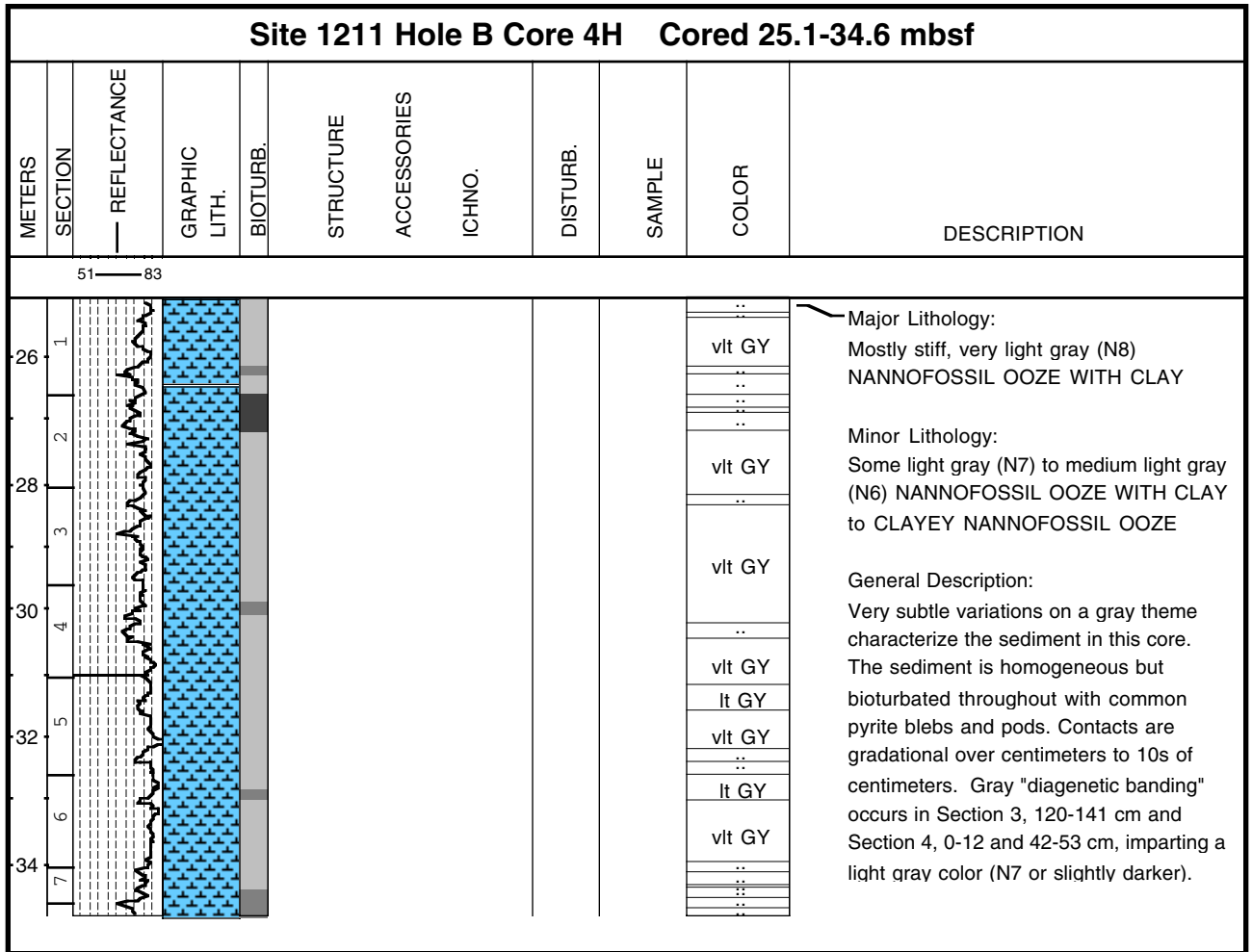
Core Photo

| Site 1211 Hole B Core 2H Cored 6.1-15.6 mbsf | | | | | | | | | | | |
|--|---------|-------------|---------------|----------|-----------|-------------|--------|----------|--------|-----------|--|
| METERS | SECTION | REFLECTANCE | GRAPHIC LITH. | BIOTURB. | STRUCTURE | ACCESSORIES | ICHNO. | DISTURB. | SAMPLE | COLOR | DESCRIPTION |
| 56 — 81 | | | | | | | | | | | |
| 1 | 1 | | | | | | | | | vpl OR | <p>Major Lithology: The core consists of pale yellowish brown (10YR 6/2) and light olive gray (5Y 6/1) NANNOFOSSIL OOZE WITH CLAY alternating with yellowish gray (5Y 8/1) NANNOFOSSIL OOZE WITH CLAY AND FORAMINIFERS or very pale orange (10YR 8/2) NANNOFOSSIL OOZE WITH CLAY.</p> <p>Minor Lithology: There is a thin, olive gray (5Y 4/1) VOLCANIC ASH layer in Section 6, 110 cm.</p> <p>General Description: The core is soupy in the first 12 cm of Section 1. The core has light/dark cycles, approximately 3 to 4 cycles per section. Contacts between colors are heavily bioturbated. There are pumice fragments in Section 3 at 15 cm and in Section 6 at 1: cm.</p> |
| 8 | 2 | | | | | | | | | pal ye BR | |
| | | | | | | | | | | :: | |
| | | | | | | | | | | ye GY | |
| | | | | | | | | | | lt ol GY | |
| | | | | | | | | | | :: | |
| | | | | | | | | | | :: | |
| | | | | | | | | | | :: | |
| | | | | | | | | | | pal ye BR | |
| | | | | | | | | | | :: | |
| | | | | | | | | | | :: | |
| | | | | | | | | | | pal ye BR | |
| | | | | | | | | | | :: | |
| | | | | | | | | | | :: | |
| | | | | | | | | | | :: | |
| 16 | 7 | | | | | | | | | :: | |

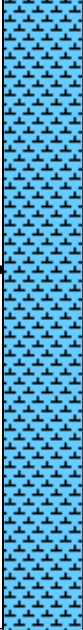
Core Photo



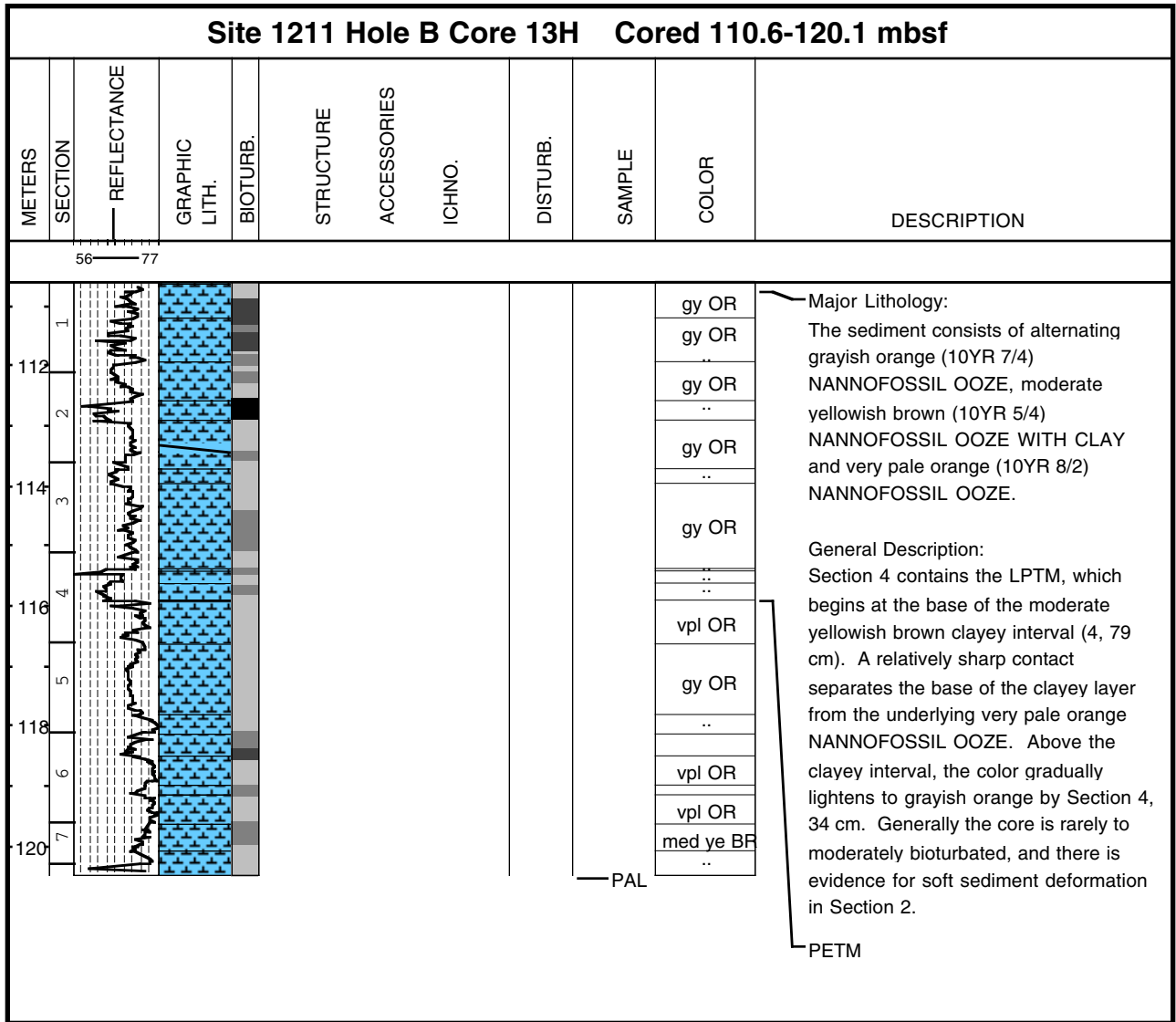
Core Photo



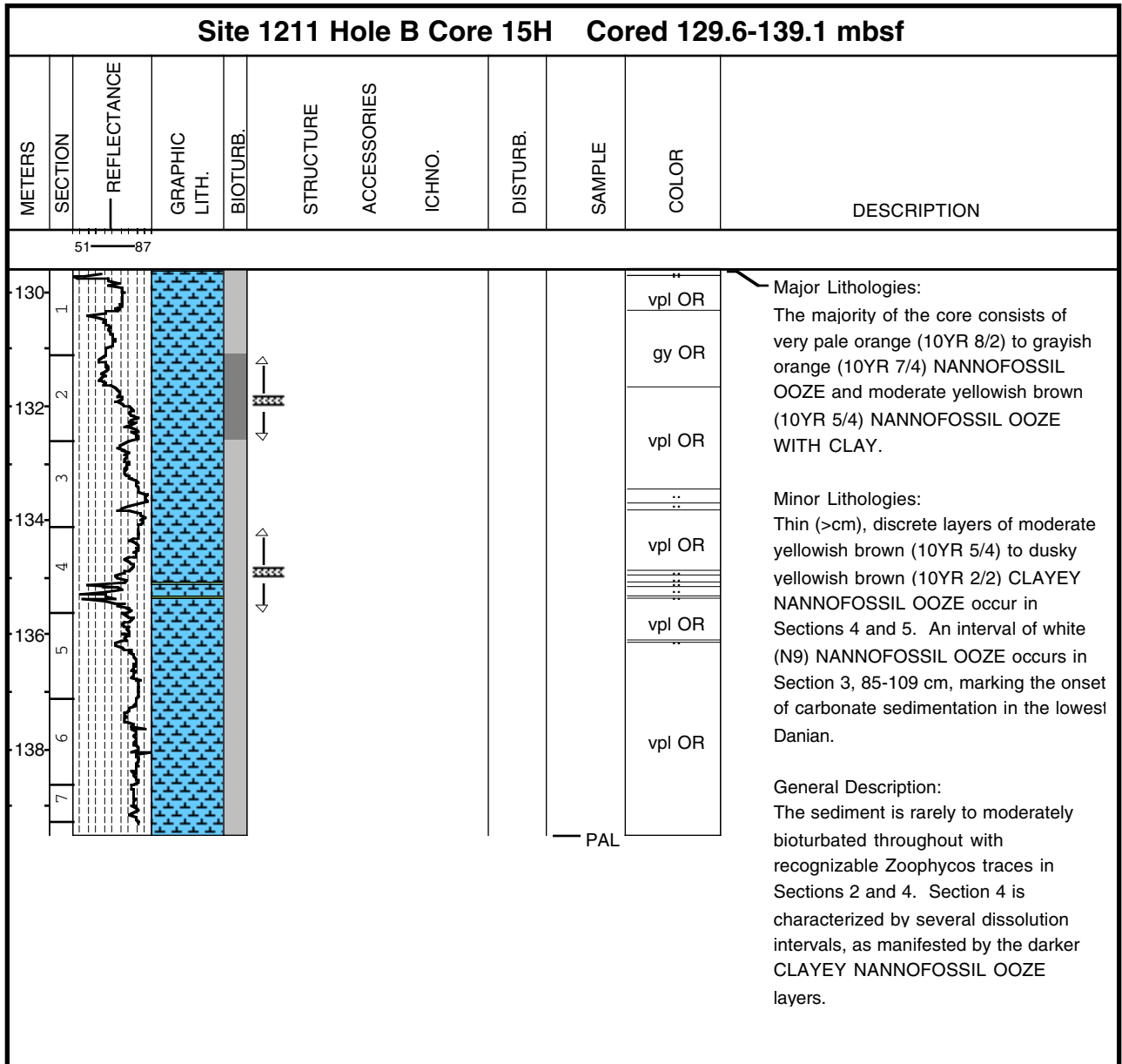
Core Photo

| Site 1211 Hole B Core 7H Cored 53.6-63.1 mbsf | | | | | | | | | | | |
|---|---------|-------------|--|----------|-----------|-------------|--------|----------|-----------|-------|---|
| METERS | SECTION | REFLECTANCE | GRAPHIC LITH. | BIOTURB. | STRUCTURE | ACCESSORIES | ICHNO. | DISTURB. | SAMPLE | COLOR | DESCRIPTION |
| 54 | 1 | 53 73 |  | | | | | | vpl OR | | <p>Major Lithology: This core consists of very pale orange (10YR 8/2), pale yellowish brown (10YR 6/2) and grayish orange (10YR 7/4) NANNOFOSSIL OOZE.</p> <p>General Description: This core is nearly homogeneous and soupy throughout. Bioturbation is rare, and a few undefined burrows filled with very pale orange ooze are present in Section 1, 2, 3, 4 and 7.</p> |
| 56 | 2 | | | | | | | | pal ye BR | | |
| 58 | 3 | | | | | | | | vpl OR | | |
| | 4 | | | | | | | | .. | | |
| | 5 | | | | | | | | vpl OR | | |
| 60 | 6 | | | | | | | | pal ye BR | | |
| 62 | 7 | | | | | | | | gy OR | | |
| | | | | | | | | | PAL | | |

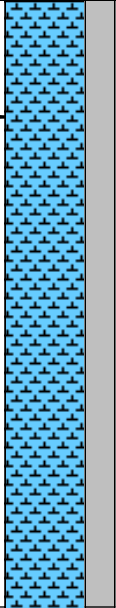
Core Photo



Core Photo



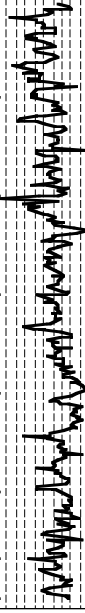
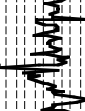
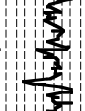




Core Photo

| Site 1211 Hole C Core 8H Cored 64.3-73.8 mbsf | | | | | | | | | | | |
|---|---------|-------------|--|----------|-----------|-------------|--------|----------|-----------|-------|--|
| METERS | SECTION | Reflectance | GRAPHIC LITH. | BIOTURB. | STRUCTURE | ACCESSORIES | ICHNO. | DISTURB. | SAMPLE | COLOR | DESCRIPTION |
| | | 59 — 78 | | | | | | | | | |
| 66 | 1 | |  | | | | | | | | <p>Major Lithology: The entire core is grayish orange (10YR 7/4) NANNOFOSSIL OOZE.</p> <p>General Description: The top 3 cm of section 1 consist of fall-in of light gray nannofossil ooze. Otherwise, the sediment in this core is homogeneous to very faintly mottled with darker pale yellowish brown (10YR 6/2) and rare very pale orange (10YR 8/2). A large white mass with darker rim is centered at 26 cm in section 2. The consistency is soupy to somewhat firm.</p> |
| 68 | 2 | | | | | | | | | | |
| 70 | 3 | | | | | | | | | | |
| 72 | 4 | | | | | | | | | | |
| | 5 | | | | | | | | | | |
| | 6 | | | | | | | | | | |
| | 7 | | | | | | | | | | |
| | | | | | | | | | pal ye BR | | |

Core Photo

| Site 1211 Hole C Core 10H Cored 83.3-92.8 mbsf | | | | | | | | | | | |
|--|---------|-------------|---------------|----------|-----------|-------------|--------|----------|--------|----------|--|
| METERS | SECTION | Reflectance | GRAPHIC LITH. | BIOTURB. | STRUCTURE | ACCESSORIES | ICHNO. | DISTURB. | SAMPLE | COLOR | DESCRIPTION |
| 84 | 1 | | | | | | | | | gy OR | <p>Major Lithology: The dominant lithologies are grayish orange (10YR 7/4) NANNOFOSSIL OOZE and dark yellowish orange (10YR 6/6) NANNOFOSSIL OOZE WITH CLAY.</p> <p>Minor Lithology: Moderate yellowish brown (10YR 5/4) CLAYEY NANNOFOSSIL OOZE occurs as mottling and burrow fill throughout the core.</p> <p>General Description: The sediment is bioturbated throughout, with burrows and mottling more evident near contrasting lithologies. Zoophycos and Chondrites are present, as well as rare pinkish white burrows.</p> |
| 86 | 2 | | | | | | | | | gy OR | |
| 88 | 3 | | | | | | | | | gy OR | |
| 90 | 4 | | | | | | | | | gy OR | |
| 92 | 5 | | | | | | | | | gy OR | |
| | 6 | | | | | | | | | dk ye OR | |
| | 7 | | | | | | | | | dk ye OR | |
| | | | | | | | | | PAL | | |

Core Photo

| Site 1211 Hole C Core 12H Cored 102.3-111.8 mbsf | | | | | | | | | | | |
|--|---------|-------------|---|----------|-----------|-------------|--------|----------|--------|-------------------|--|
| METERS | SECTION | Reflectance | GRAPHIC LITH. | BIOTURB. | STRUCTURE | ACCESSORIES | ICHNO. | DISTURB. | SAMPLE | COLOR | DESCRIPTION |
| | | 52 — 75 | | | | | | | | | |
| 104 | 1 | |  | | | | | | | gy OR dk ye BR | <p>Major Lithology: The core consists of alternating grayish orange (10YR 7/4) NANNOFOSSIL OOZE and dark yellowish (10YR 6/6) to moderate yellowish brown (10YF 5/4) NANNOFOSSIL OOZE WITH CLAY.</p> <p>General Description: This core is characterized by subtle centimeter to decimeter-scale light/dark cycles. Darker intervals range from 2 to 24 cm in thickness. They are more closely spaced in Sections 1 through 4 and more widely spaced in Sections 5 through 7. Upper and lower contacts of layers are gradational and bioturbated. Discrete burrows are zoned with rims of pale yellowish brown (10YR 6/2) and infillings of very pale orange (10YR 8/2) NANNOFOSSIL OOZE. The core is just slightly soupy in spots.</p> |
| 106 | 2 | |  | | | | | | | | |
| 108 | 3 | |  | | | | | | | | |
| 110 | 4 | |  | | | | | | | | |
| | 5 | |  | | | | | | | gy OR dk ye BR | |
| | 6 | |  | | | | | | | | |
| | 7 | |  | | | | | | | | |

