

0.0-7.4 mbsf

1

2

3

4

5

CC

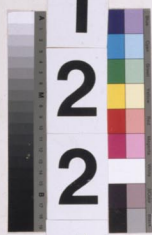
LEG

1  
9  
9

5  
10  
15  
20  
25  
30  
35  
40  
45  
50  
55  
60  
65  
70  
75  
80  
85  
90  
95  
100  
105  
110  
115  
120  
125  
130  
135  
140  
145  
150

SITE

1  
2  
2  
1



HOLE

C

CORE

1  
H

PAL

