

65.8-75.3 (mbsf)

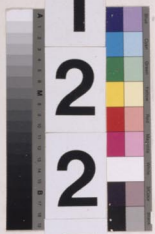
1 2 3 4 5 6 7 CC

LEG

2
0
1

SITE

1
2
2
5



HOLE

C

CORE

8
H

5
10
15
20
25
30
35
40
45
50
55
60
65
70
75
80
85
90
95
100
105
110
115
120
125
130
135
140
145
150



I
W

I
W