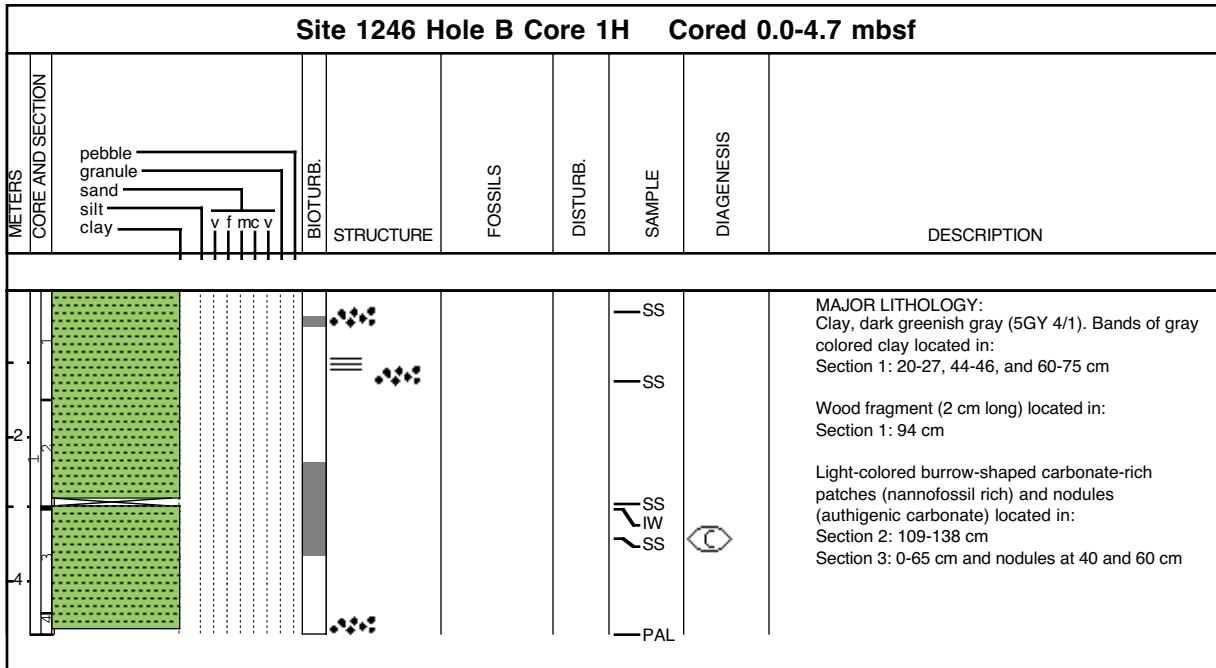
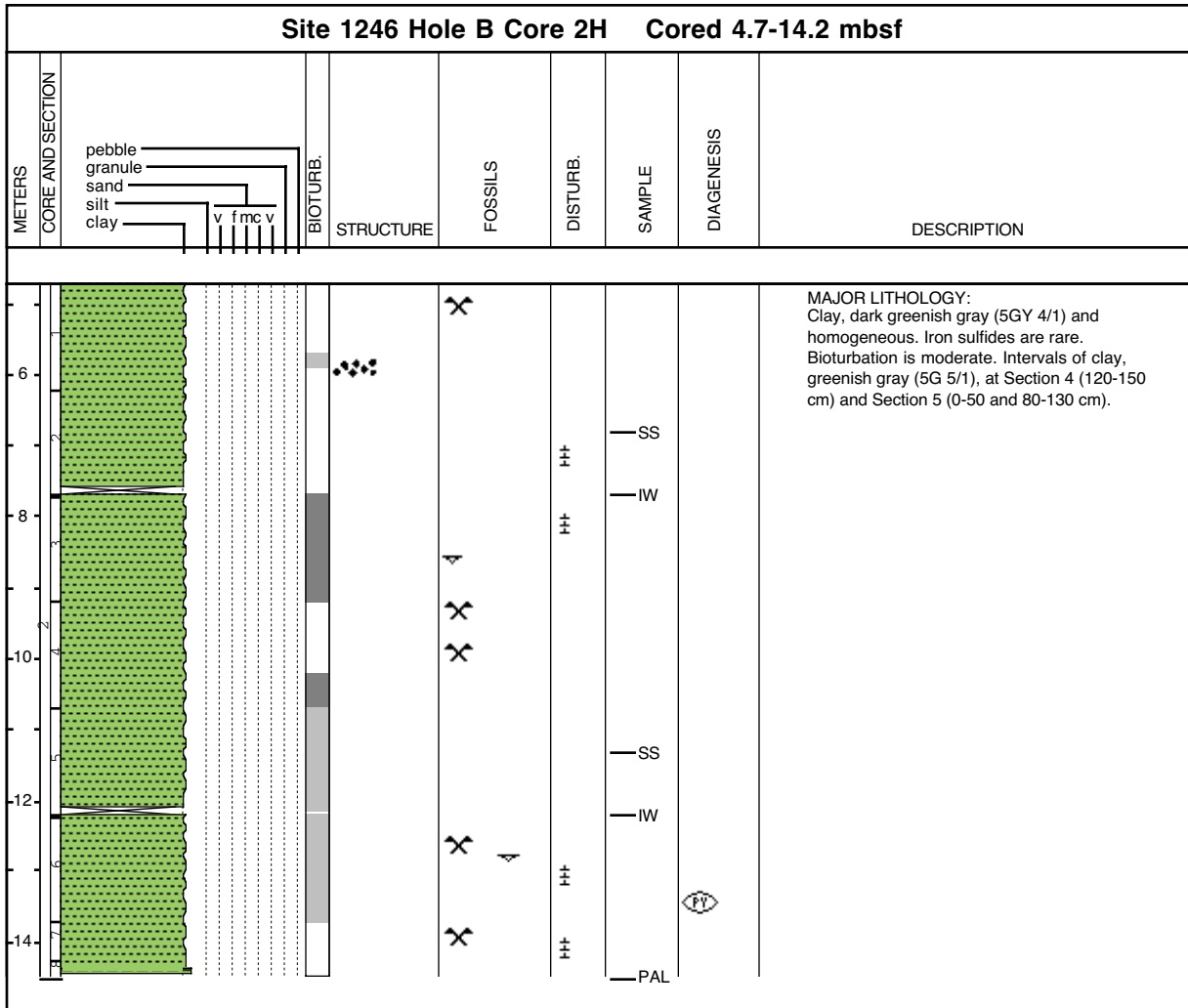


Core Photo

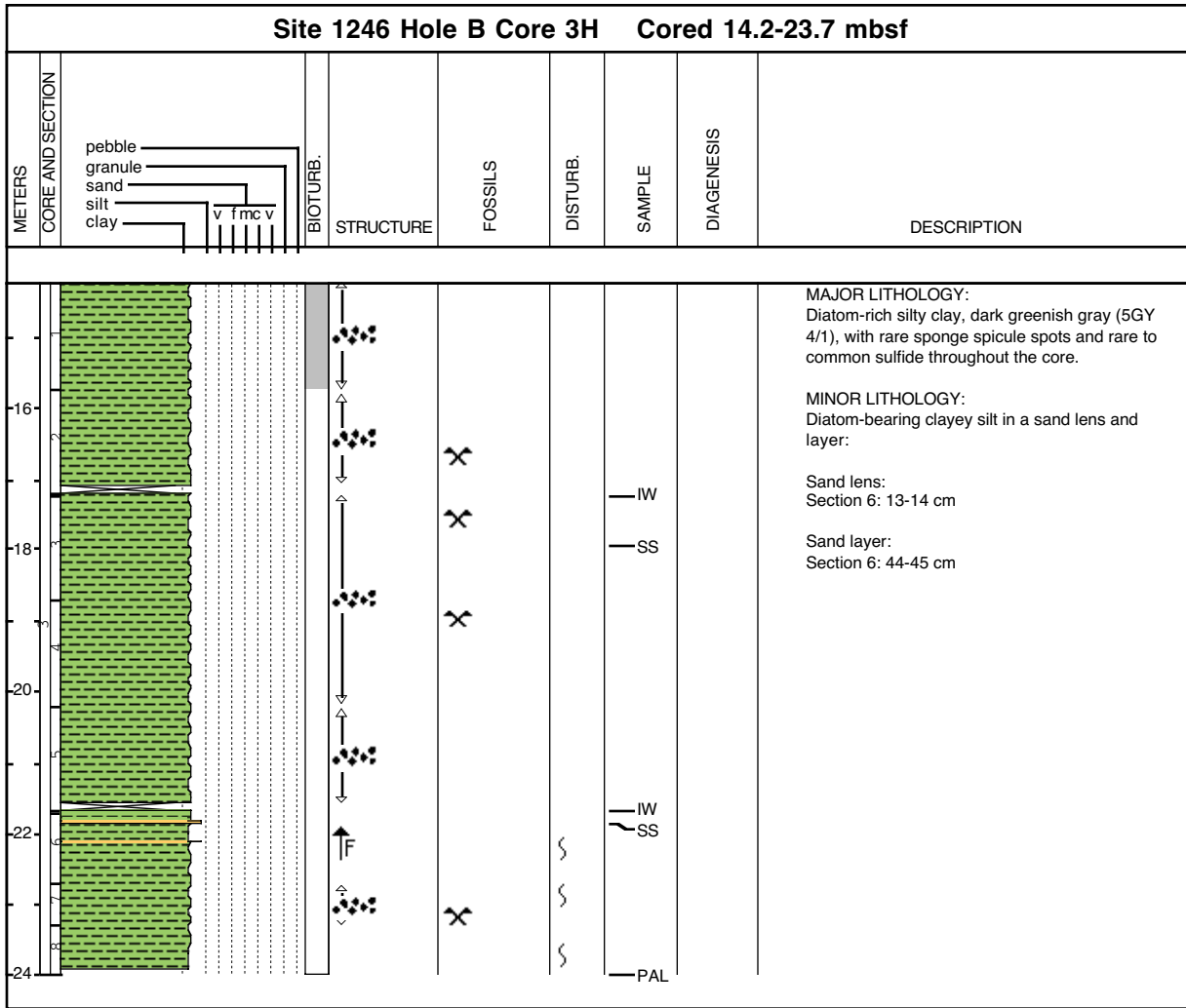


Hole A Drilled, but not cored.

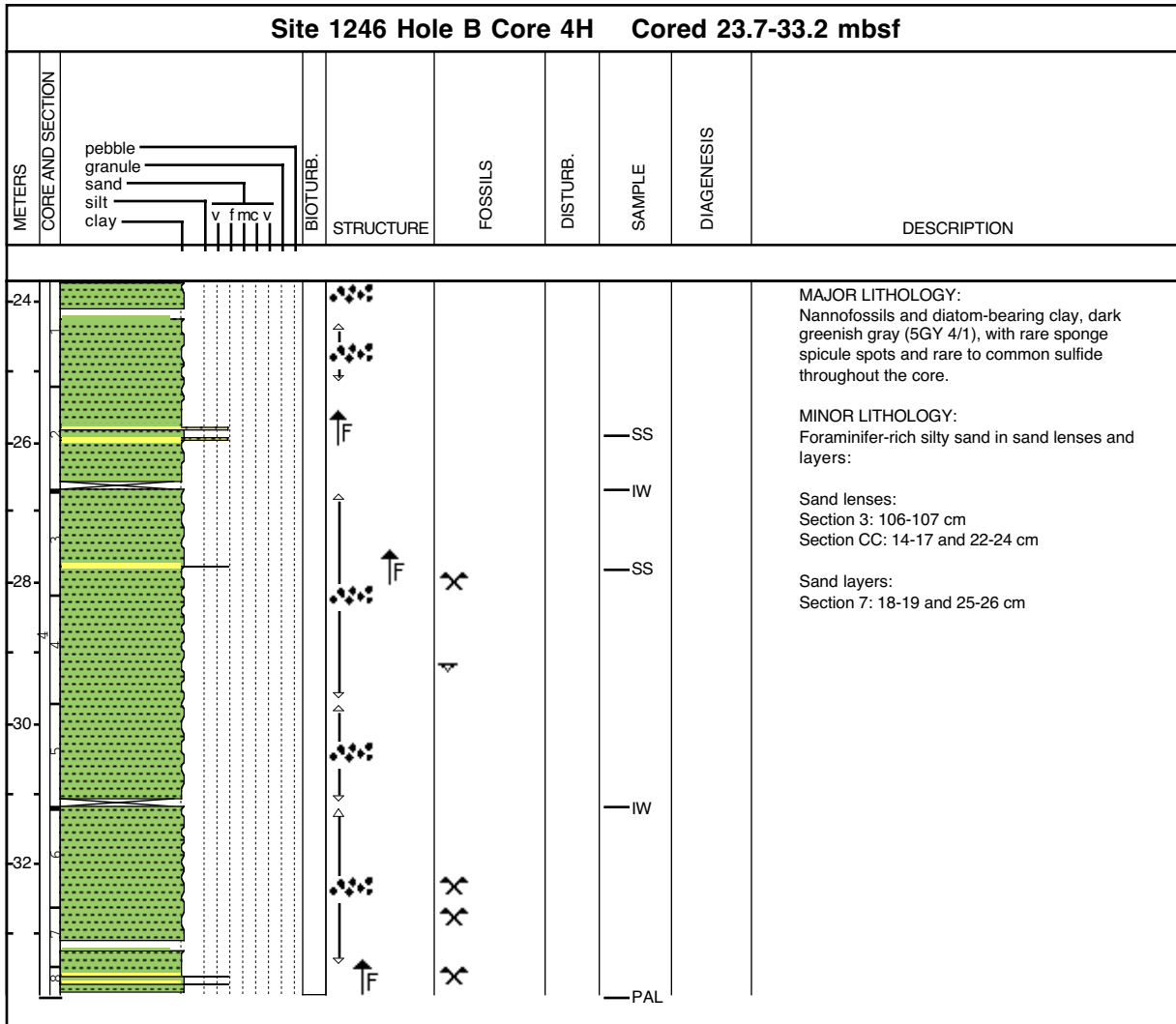
Core Photo



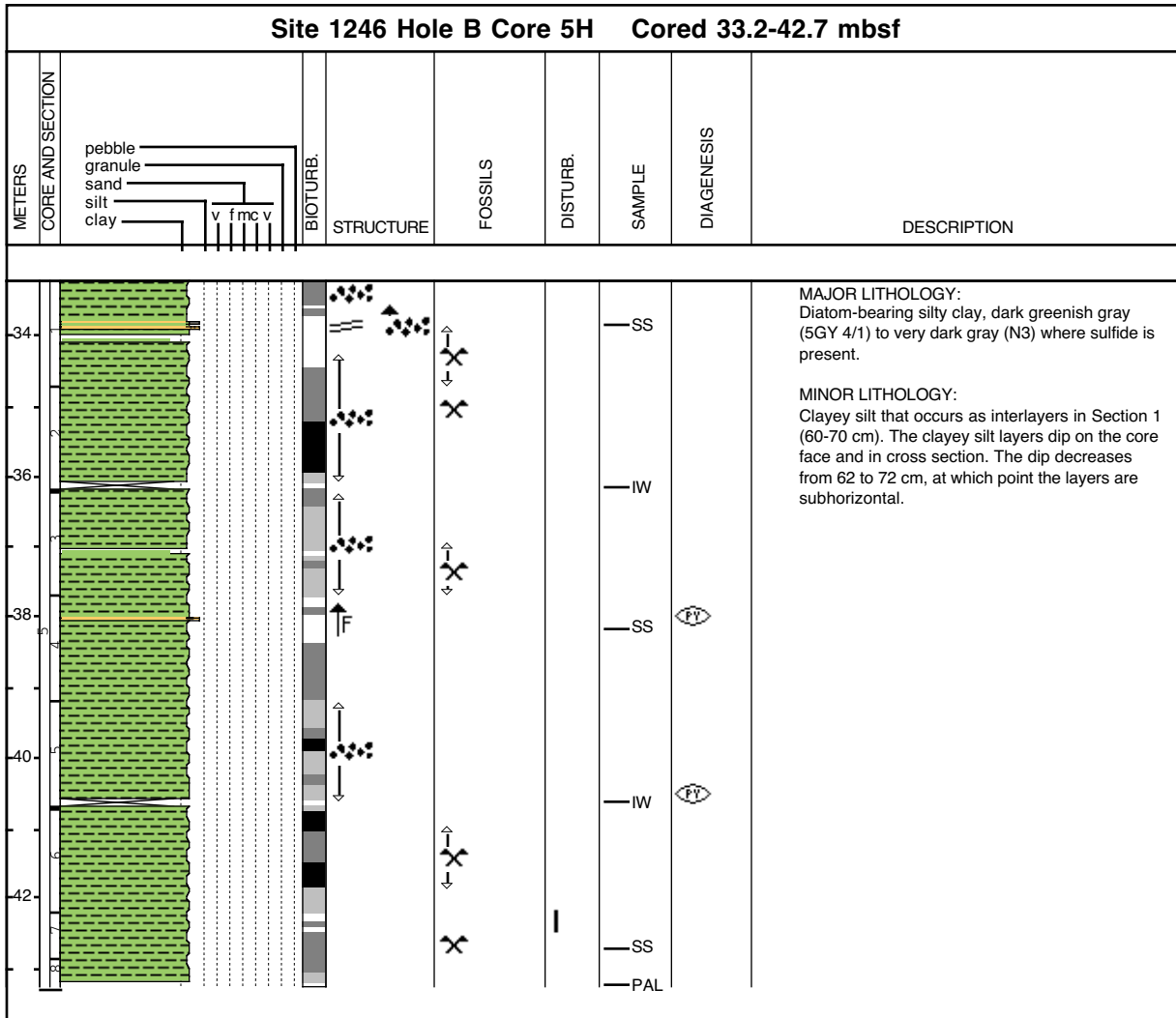
Core Photo



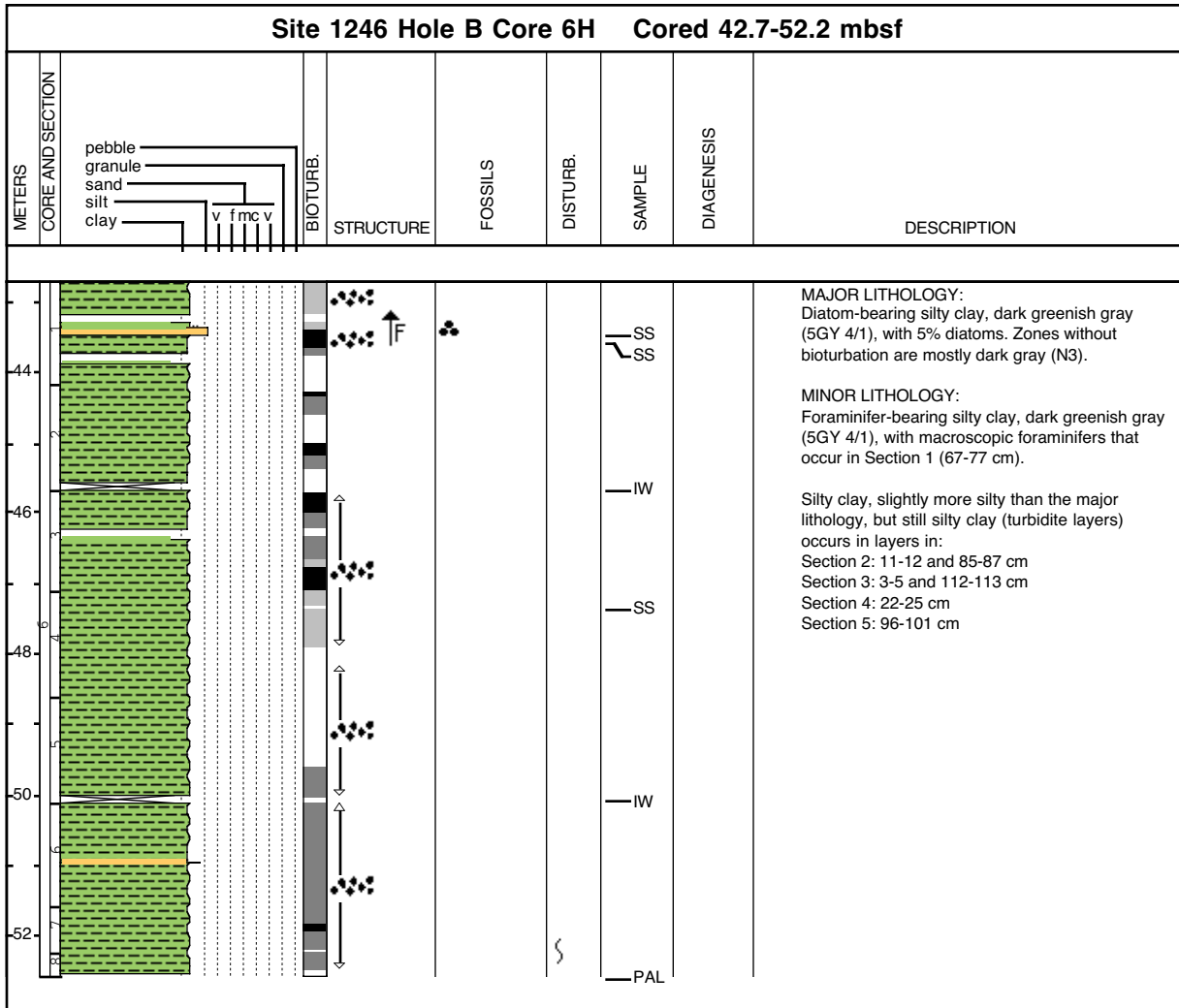
Core Photo



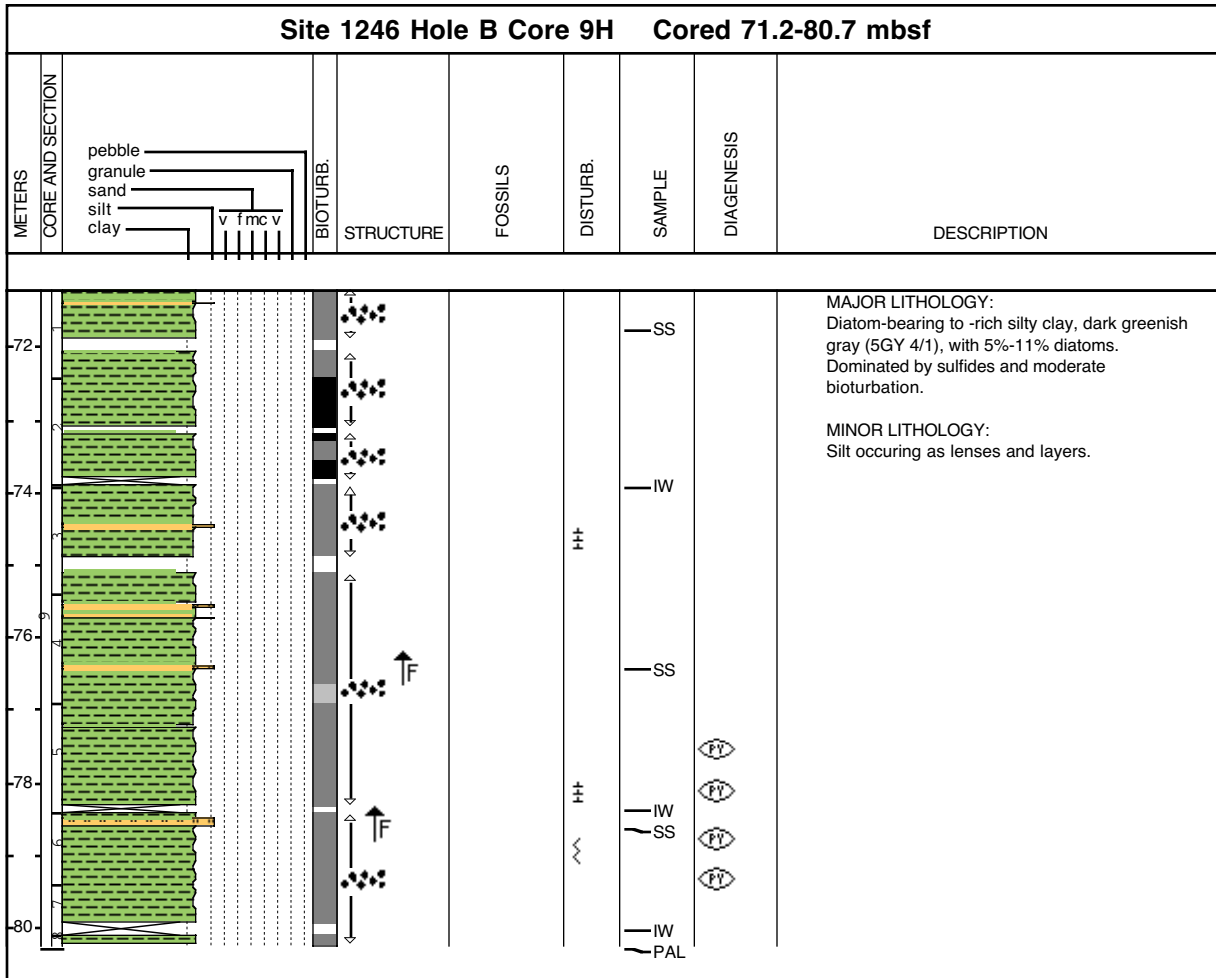
Core Photo



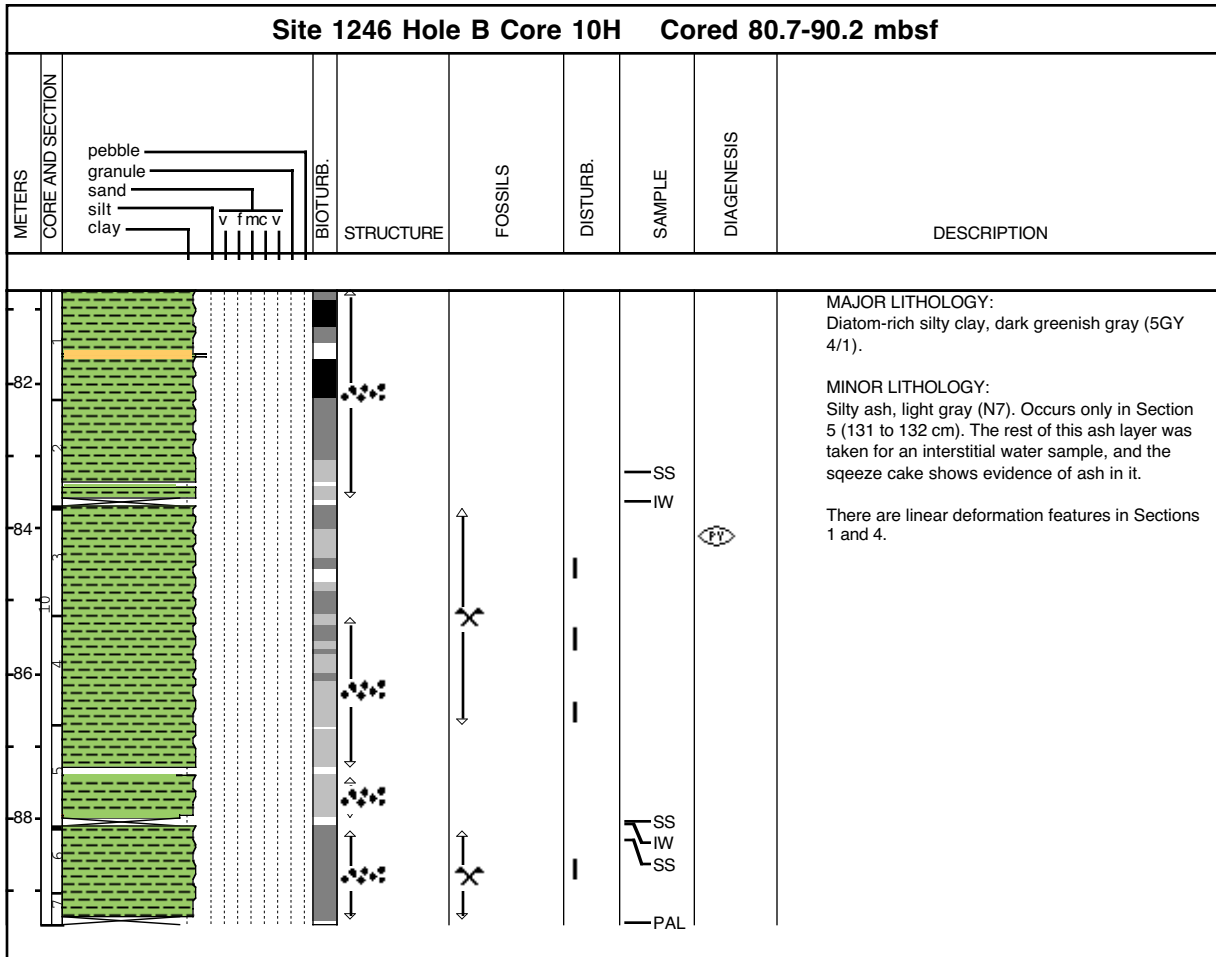
Core Photo



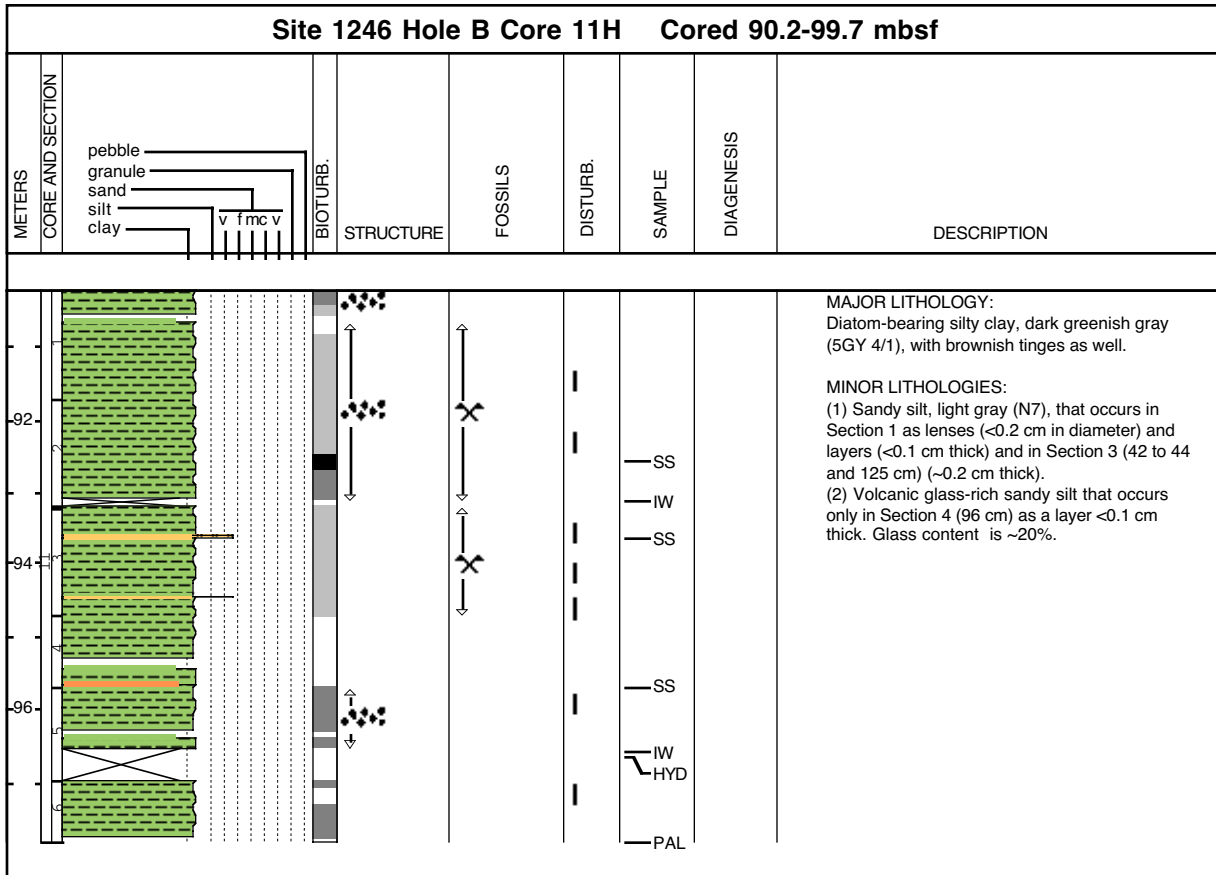
Core Photo



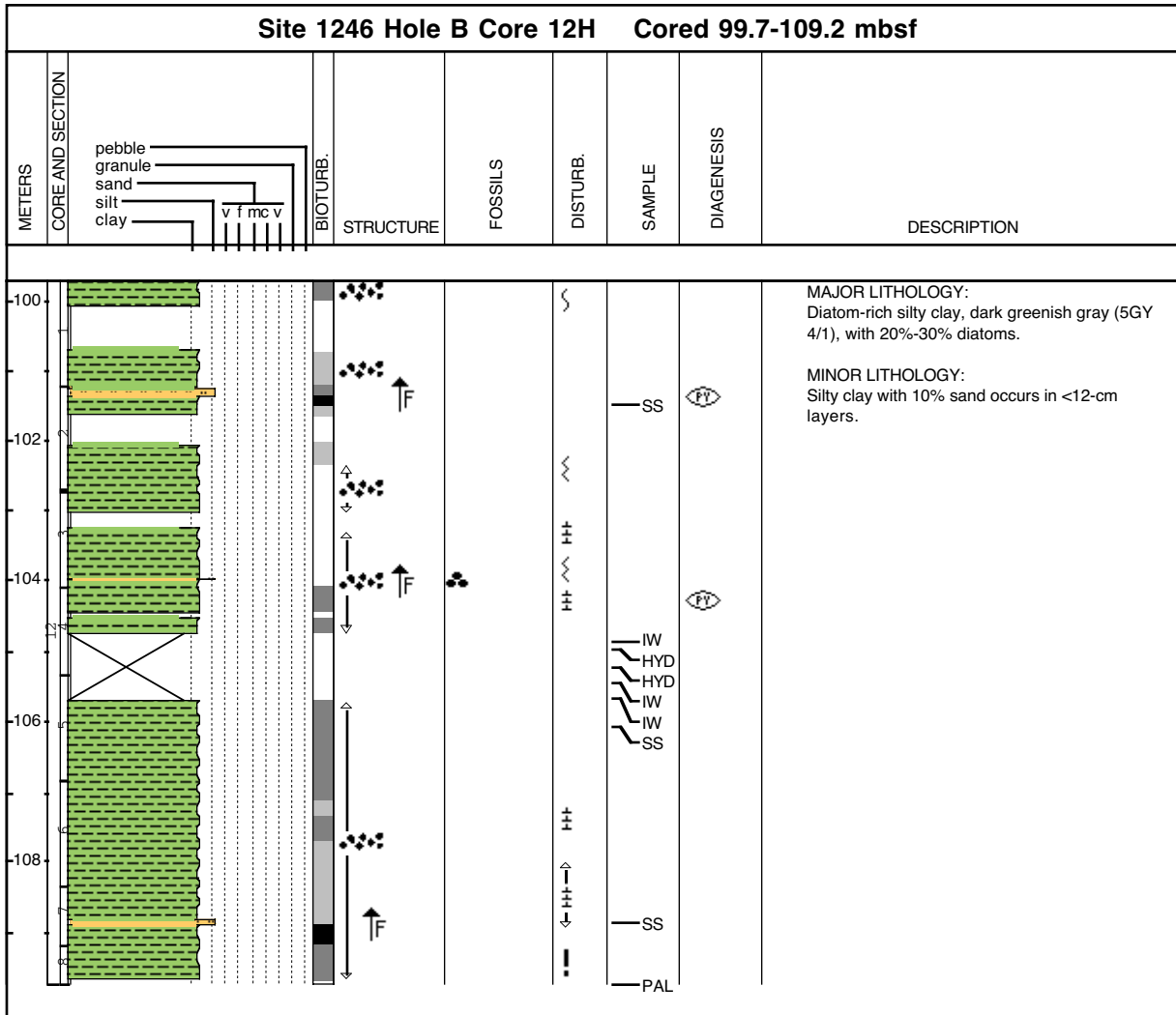
Core Photo



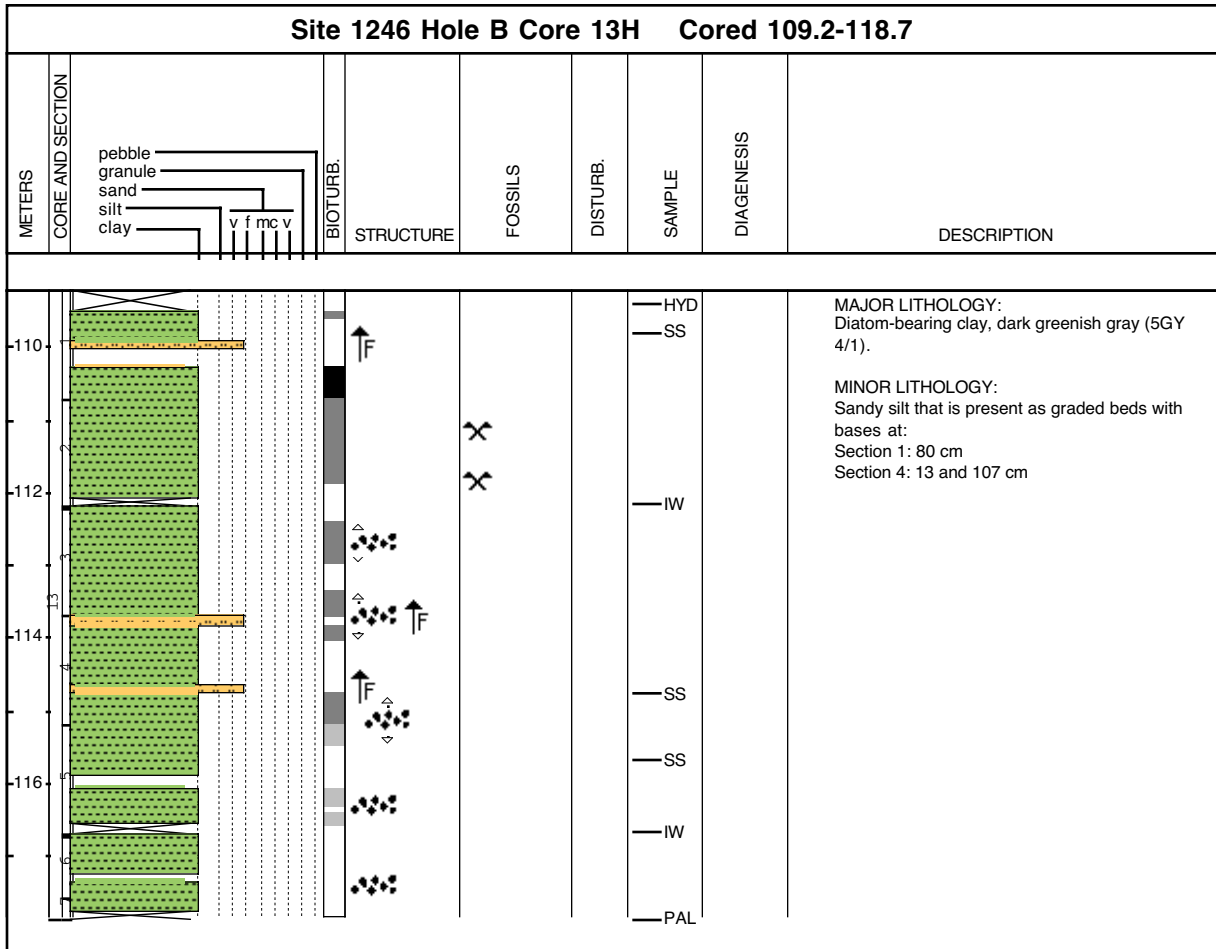
Core Photo



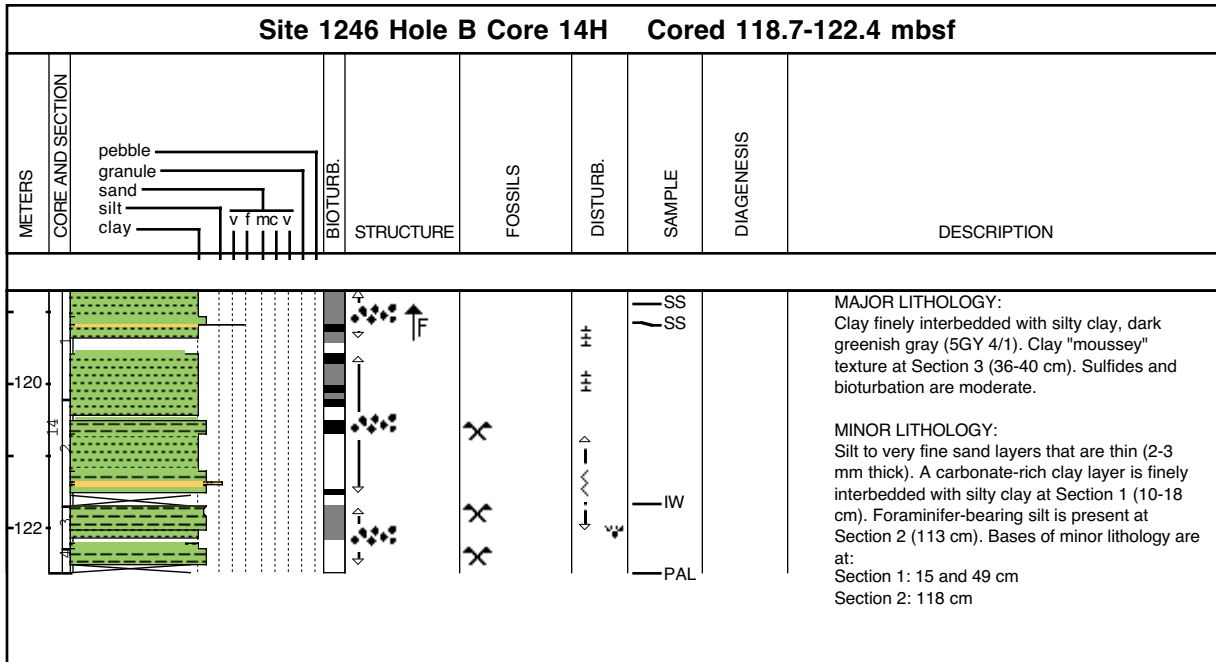
Core Photo



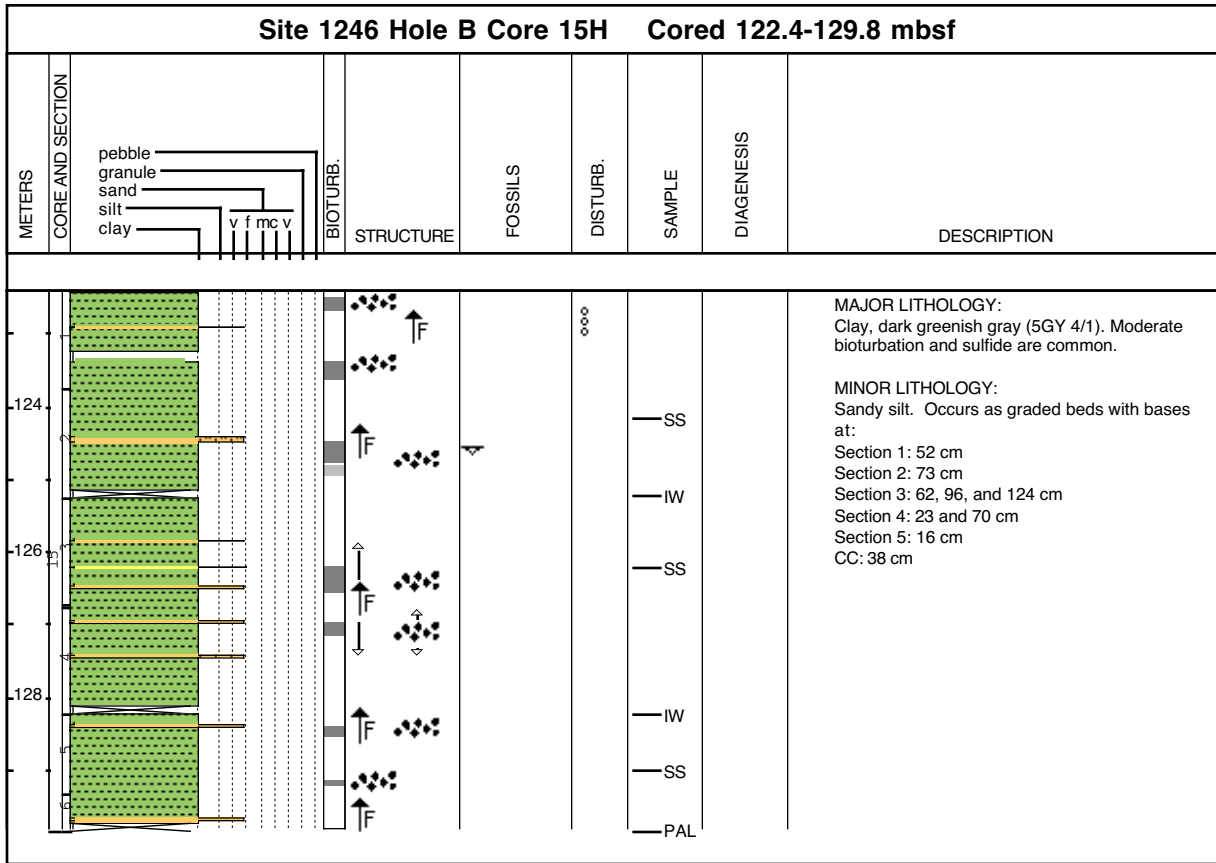
Core Photo



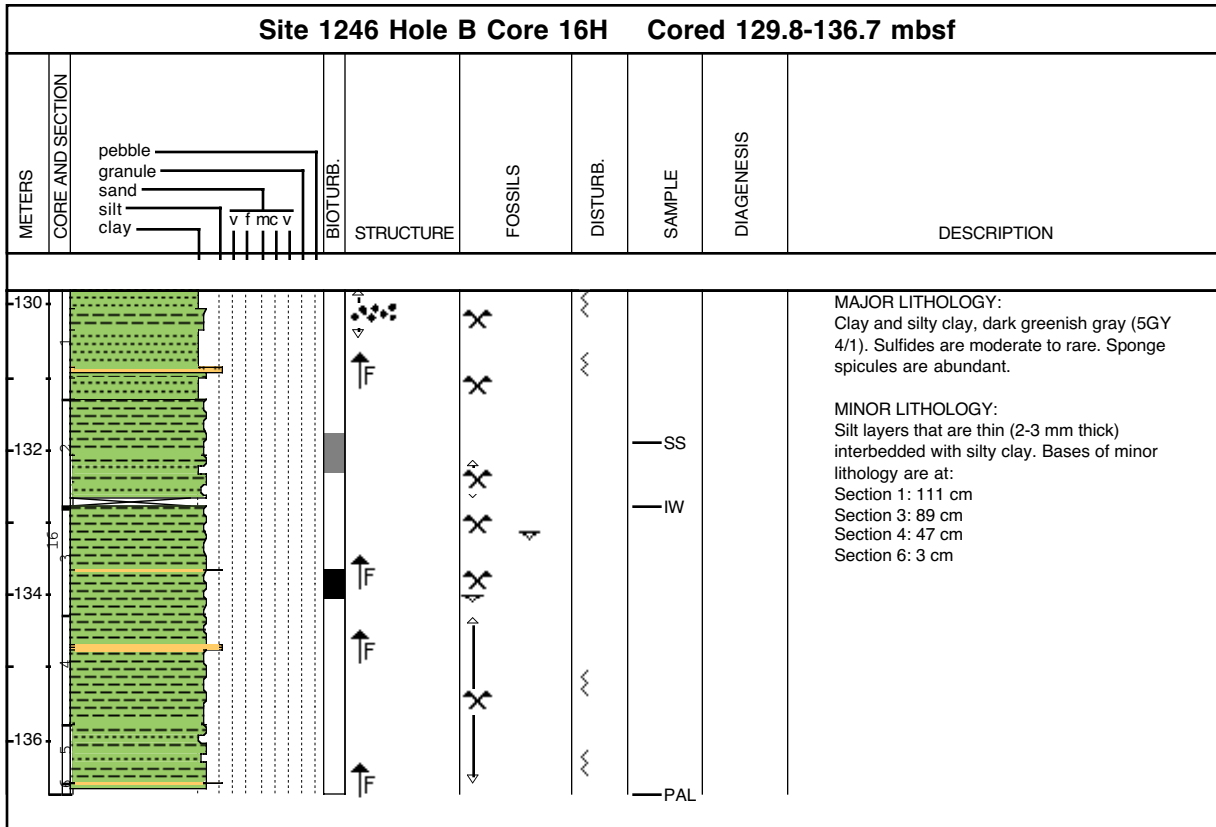
Core Photo



Core Photo



Core Photo



**CORE DESCRIPTIONS
SMEAR SLIDES, SITE 1246**

Sample					Texture			Mineral										Biogenic					Comments
Core	Core type	Section	Interval (cm)	Depth (mbsf)	Lithology	Sand	Silt	Clay	Biotite	Calcite	Calcite needles	Feldspar	Glauconite	Muscovite	Opagues	Quartz	Volcanic Glass	Diatoms	Foraminifers	Nannofossils	Siliceous fossils&spicules		
Hole B																							
1	H	1	27	0.27	D		15	85							5	8		3					
1	H	1	125	1.25	D		15	85				1			8	10		1				2	
1	H	2	140	2.90	M		20	80							5	1		3			50	1	
1	H	3	40	3.40	M		2	98			90												
2	H	2	61	6.81	D		15	85	2				2		3	14		3			4		
2	H	5	64	11.34	D		5	95	2						2	15		3					
3	H	3	72	17.92	D	5	35	60							5			12		2	3		
3	H	6	14	21.84	M		25	75							8			11					
4	H	2	67	25.87	D	1	14	85	1			8			1			6	1	5	1		
4	H	3	106	27.76	M	60	30	10	5						5				12				
5	H	1	62	33.82	M	10	70	20			5	20		5		50							
5	H	4	43	38.13	D	3	30	67		5					7	10		5	2		5		
5	H	7	46	42.66	D		30	70		5					7	10		5			2		
6	H	1	74	43.44	M	10	40	50							3	10			9				
6	H	1	89	43.59	D		30	70							2	10		5			3		
6	H	4	24	47.34	M		30	70					3	3	10		2			2			
7	H	3	64	55.73	D		30	70							2	10							
7	H	3	121	56.30	M	2	90	8				5			2	30			1				
7	H	4	19	56.78	D		30	70							3	20		5					
8	H	1	84	62.54	M	60	30	10							40	40							
8	H	2	80	64.00	D		40	60				10			3	30							
8	H	3	134	66.04	M		60	40				10			5	50							
8	H	4	53	66.73	D		35	65				2			3	10		3					
9	H	1	53	71.73	M	60	30	10							40	10							
9	H	4	100	76.41	M	3	82	15				5			3	40							
9	H	6	20	78.61	D		25	75								20		11		1			
10	H	2	98	83.18	D		30	70				5			10	15		3					
10	H	5	131	88.01	M		70	30				1			5	5	60	2					
10	H	6	15	88.27	D		30	70				2			5	7		11	3				
11	H	2	87	92.57	D		40	60				1			10	10	15	5				6	
11	H	3	43	93.63	M	40	50	10				20	2		20	50	10						
11	H	4	96	95.66	M	20	70	10							30	20		1	2				
12	H	2	45	101.65	D		25	75							5			20					
12	H	5	70	106.03	D		25	75							2			30					
12	H	7	51	108.84	M	10	30	60	1			5				5		1					
13	H	1	55	109.75	D		10	90							1	5		5			3		
13	H	4	102	114.72	M	30	70					10				25			3				
13	H	5	45	115.65	D		20	80				5			1	10		5					
14	H	1	16	118.86	M		10	90	1		50					5							
14	H	1	17	118.87	M		30	70			10	4			1					3			
14	H	1	43	119.13	D		40	60	1		5		2		3	15		4	3				
14	H	2	113	121.33	M		50	50			6		4		4	10		5	6				
15	H	2	41	124.16	D		15	85							3	10		2					
15	H	3	97	126.22	M	60	40		1			6			2	10							
15	H	5	74	128.99	D		10	90				3			1	8		1					
16	H	2	59	131.89	D		40	60				1	2			10		6	3	4	1		
16	H	3	38	133.18	M	60	30	10			5	2	4		4	30		2					