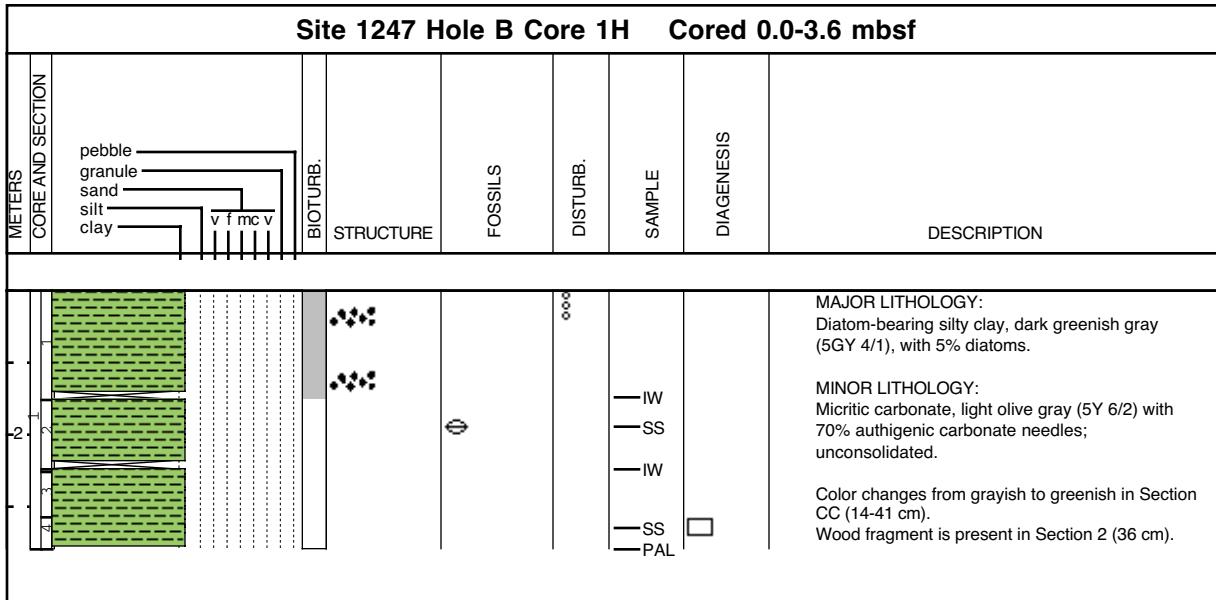
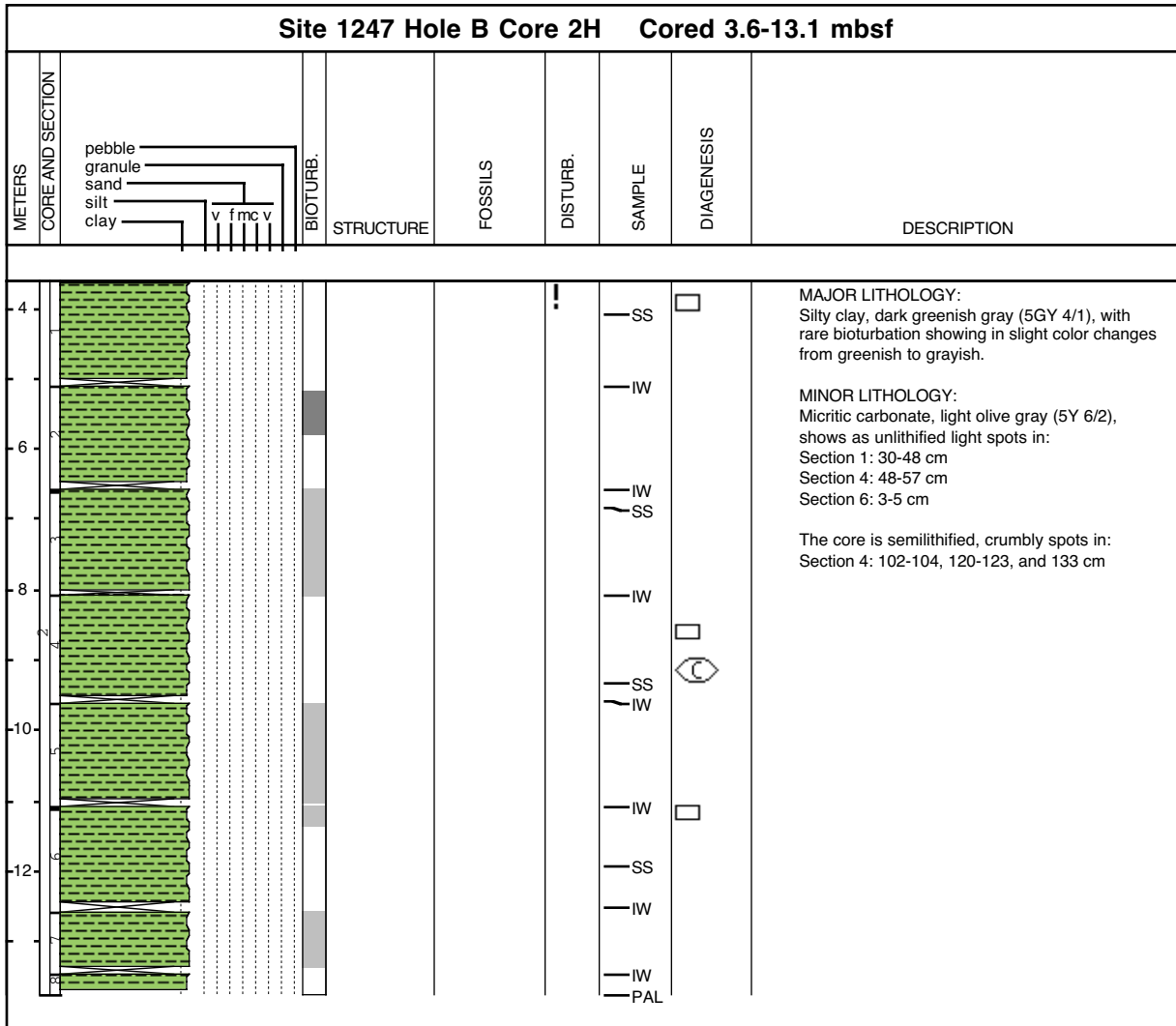


**Core Photo**

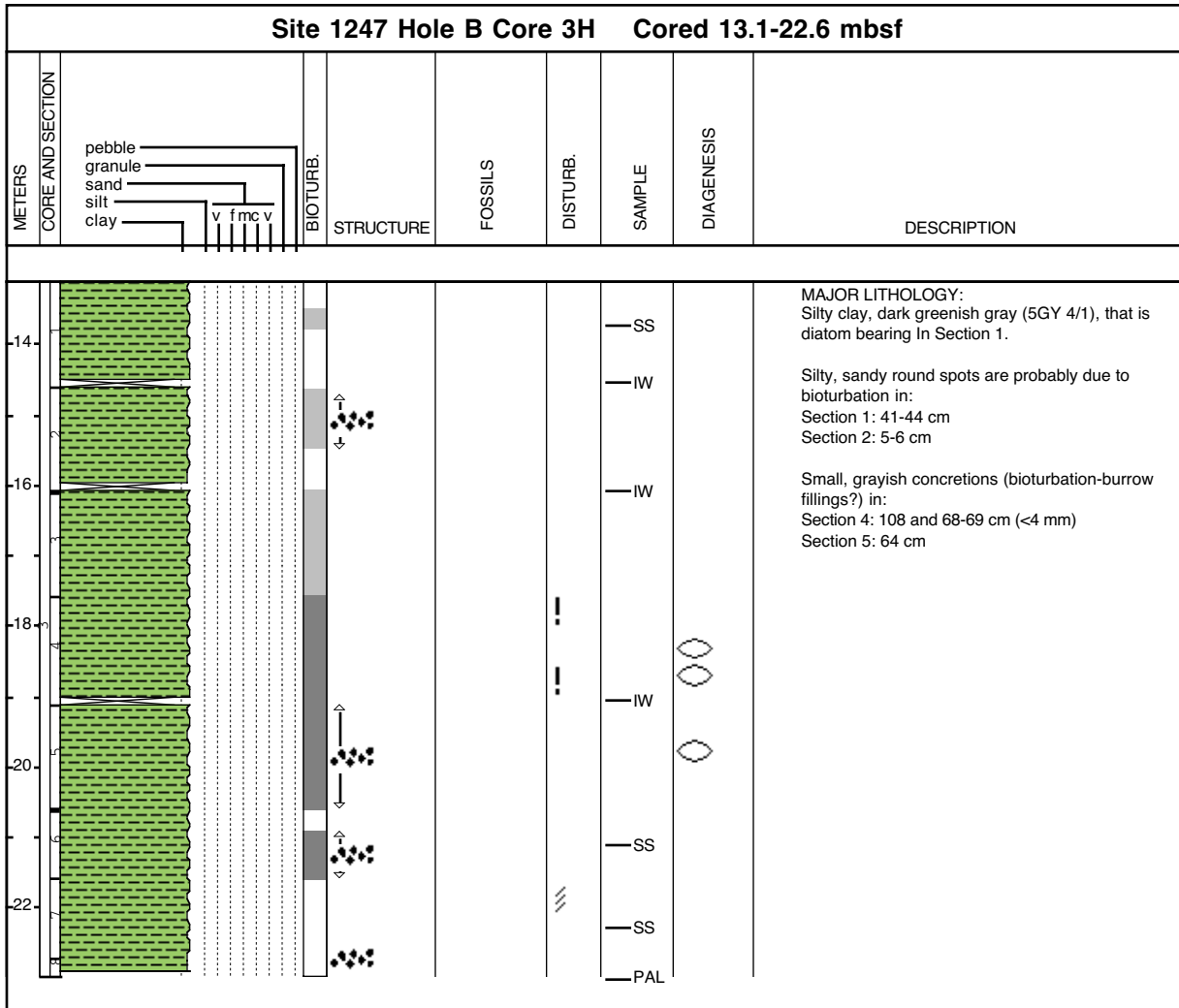


Hole A Drilled, but not cored.

Core Photo



Core Photo

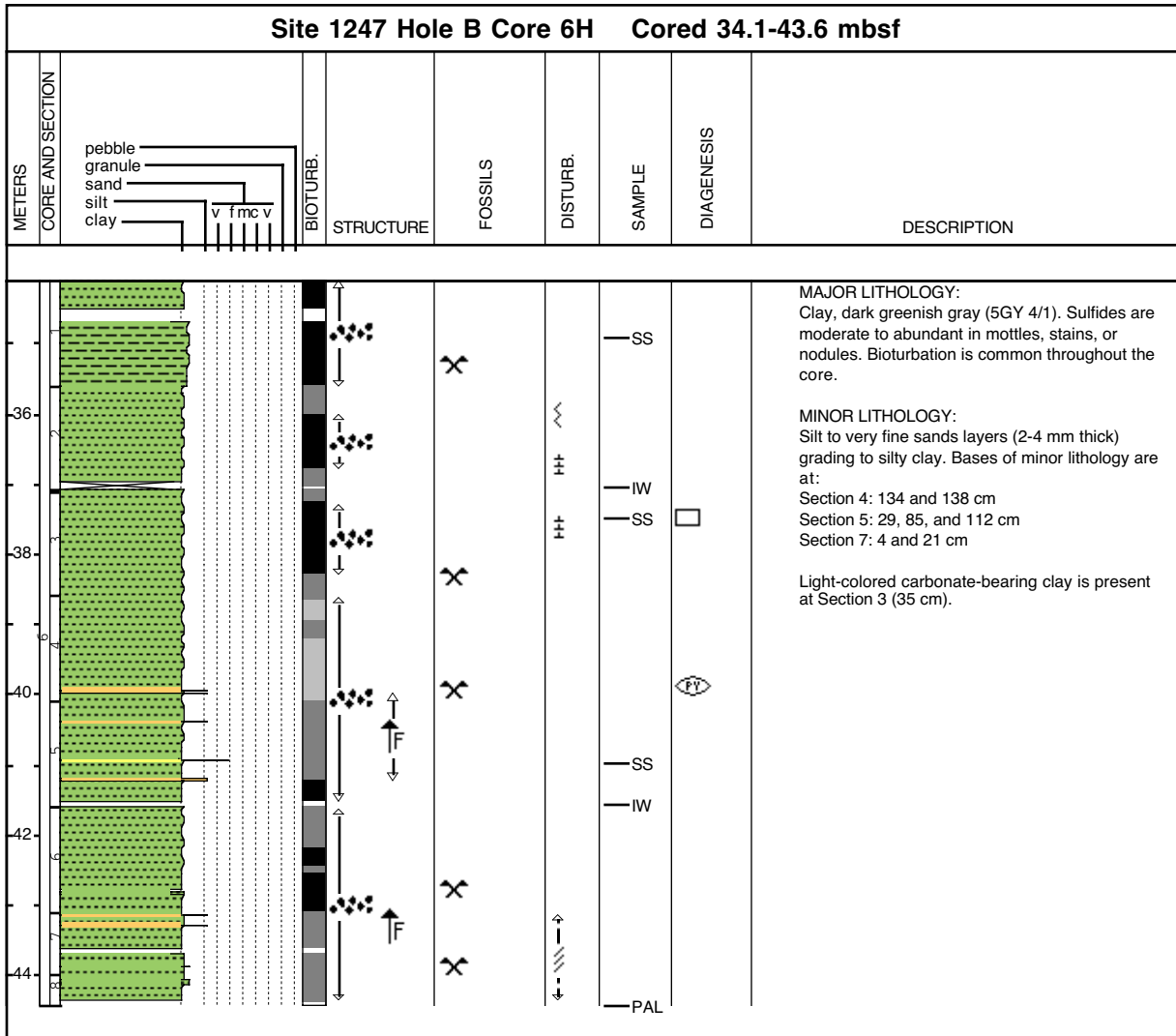


Core Photo

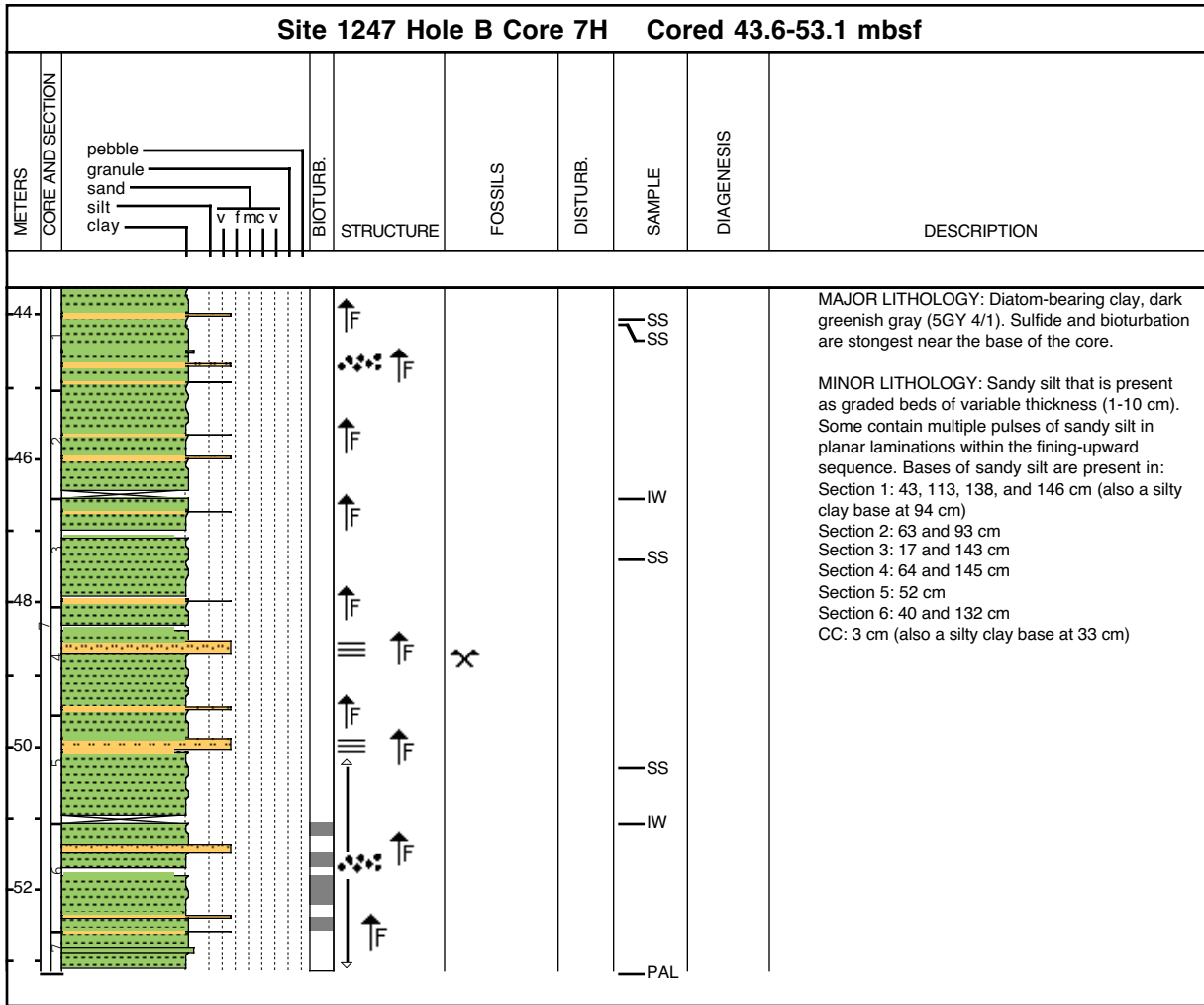
Site 1247 Hole B Core 4P Cored 22.6-23.6 mbsf								
METERS CORE AND SECTION	pebble granule sand silt clay	BIOTURB.	STRUCTURE	FOSSILS	DISTURB.	SAMPLE	DIAGENESIS	DESCRIPTION
								<p>MAJOR LITHOLOGY:                      Clay, dark greenish gray (5GY 4/1). The core has a soupy texture from 0 to 15 cm and is consolidated and homogeneous from 20-42 cm. No sulfides were observed. This PCS core is disturbed by drilling.</p>



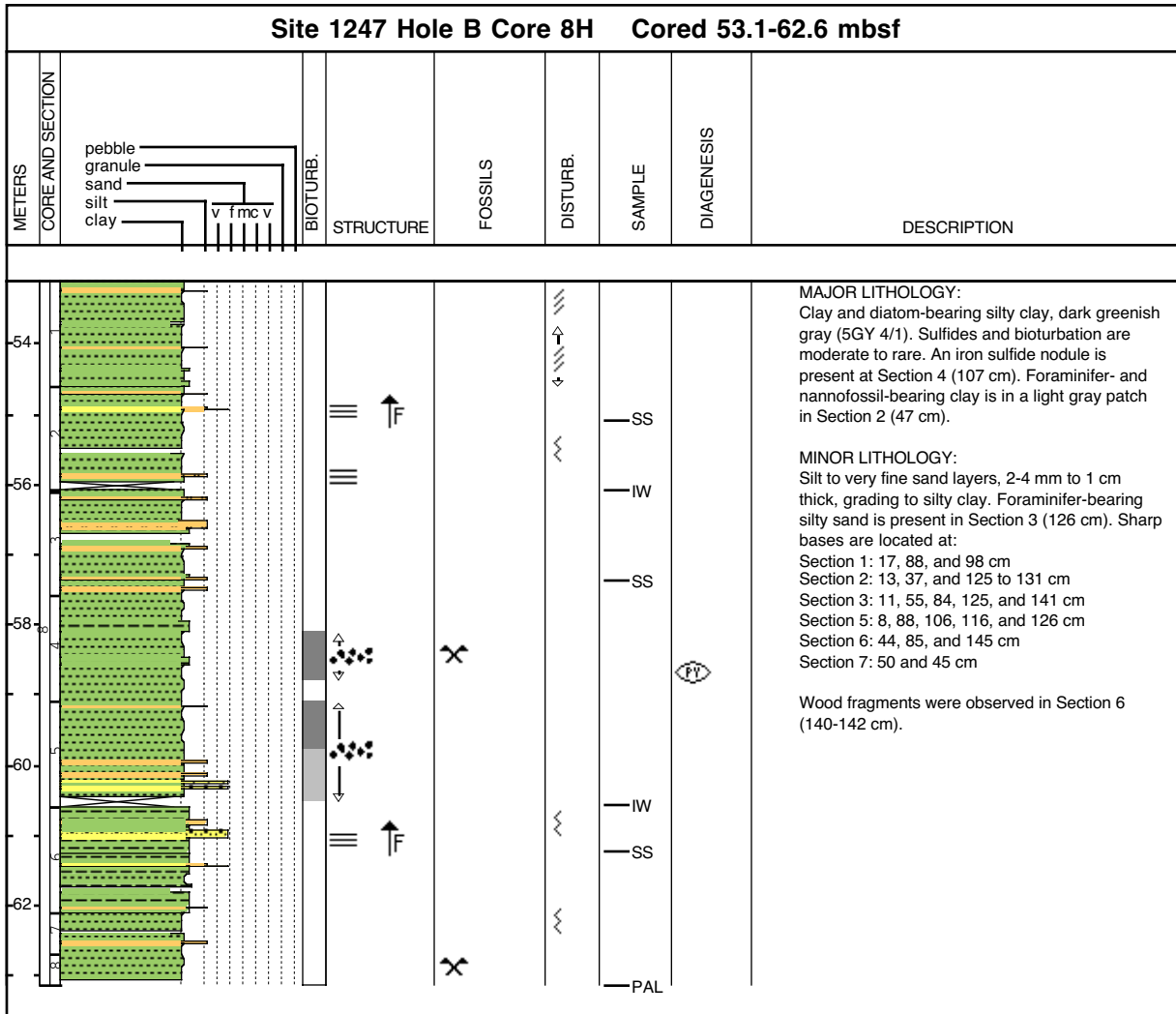
Core Photo



Core Photo

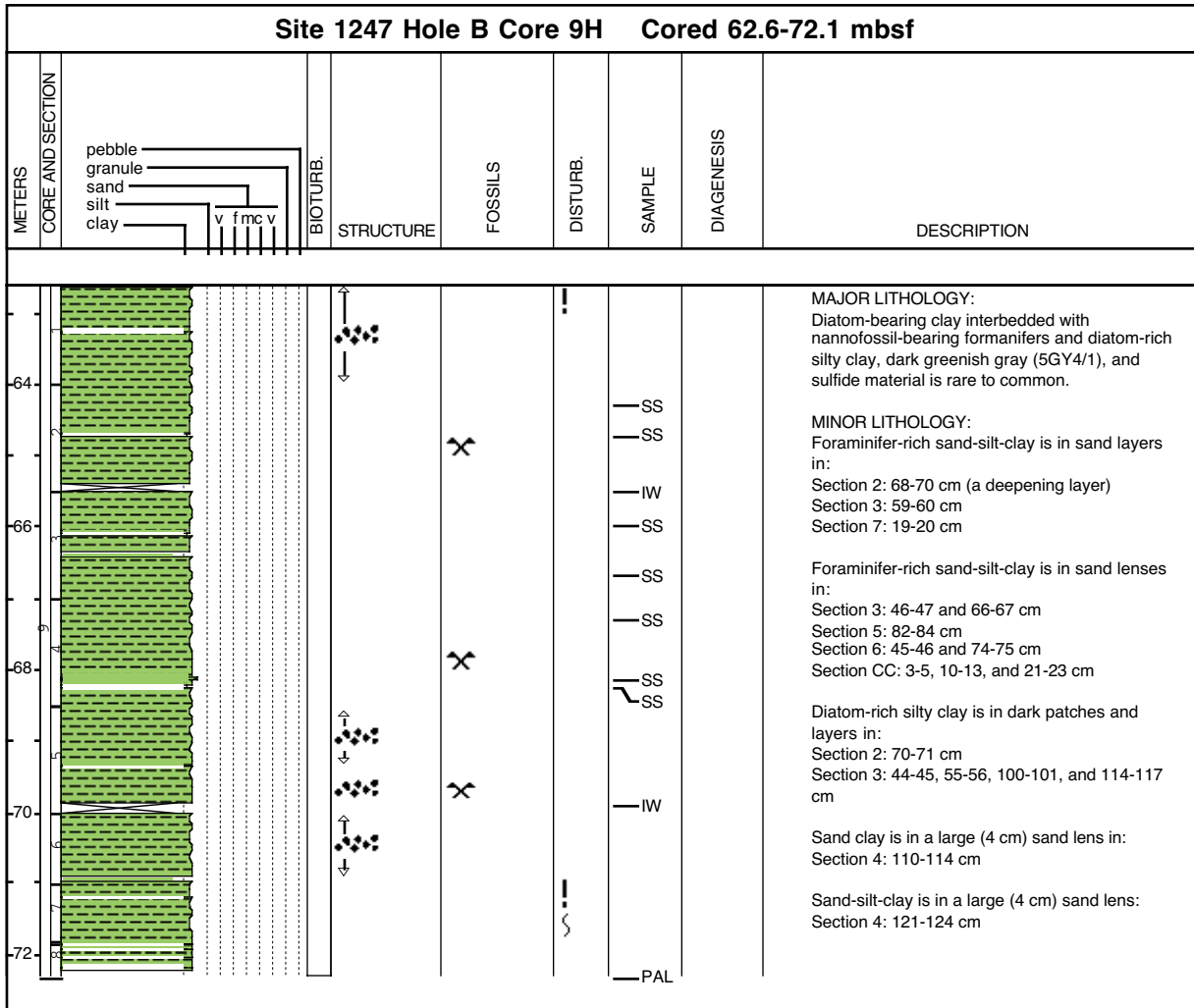


Core Photo

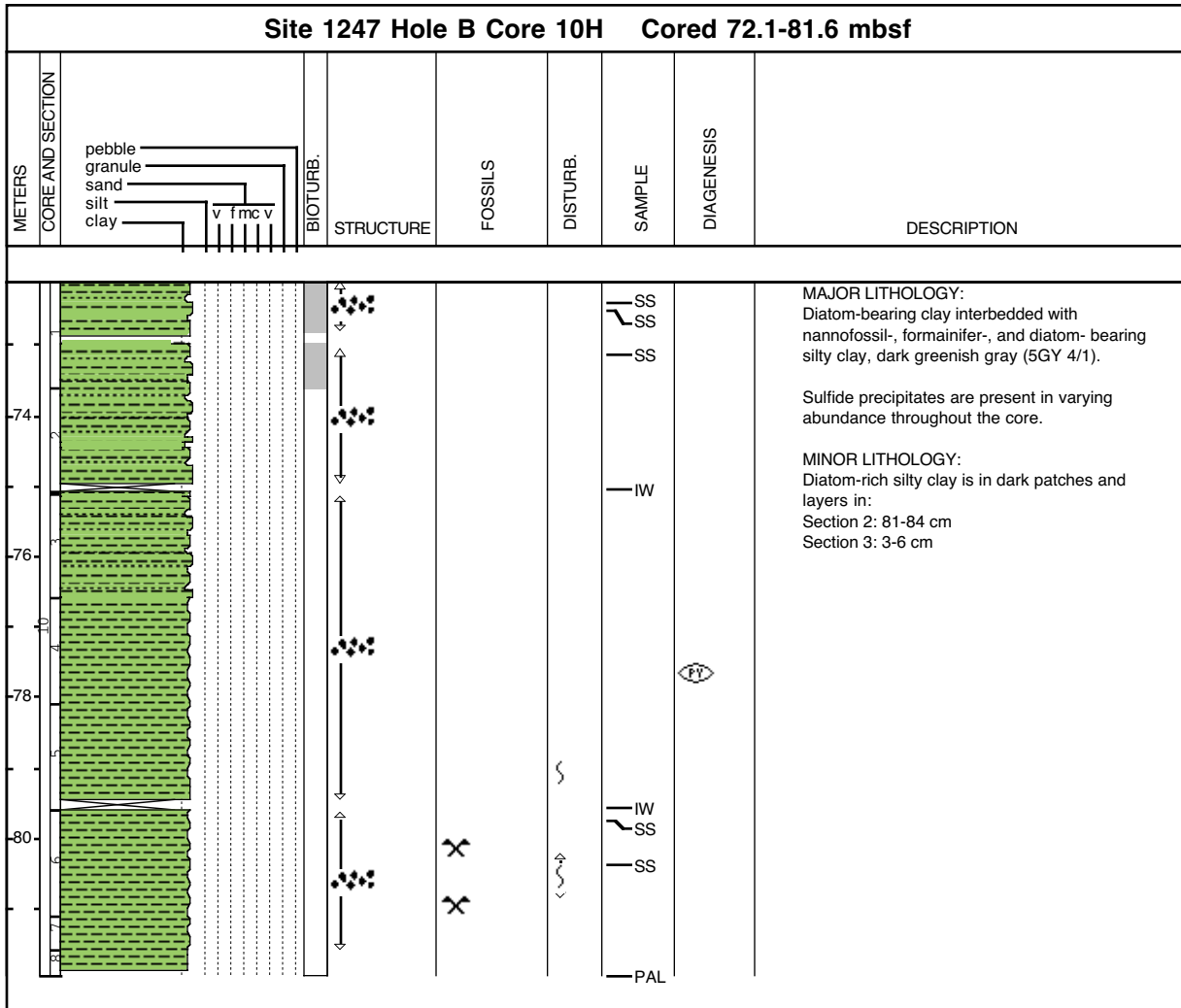




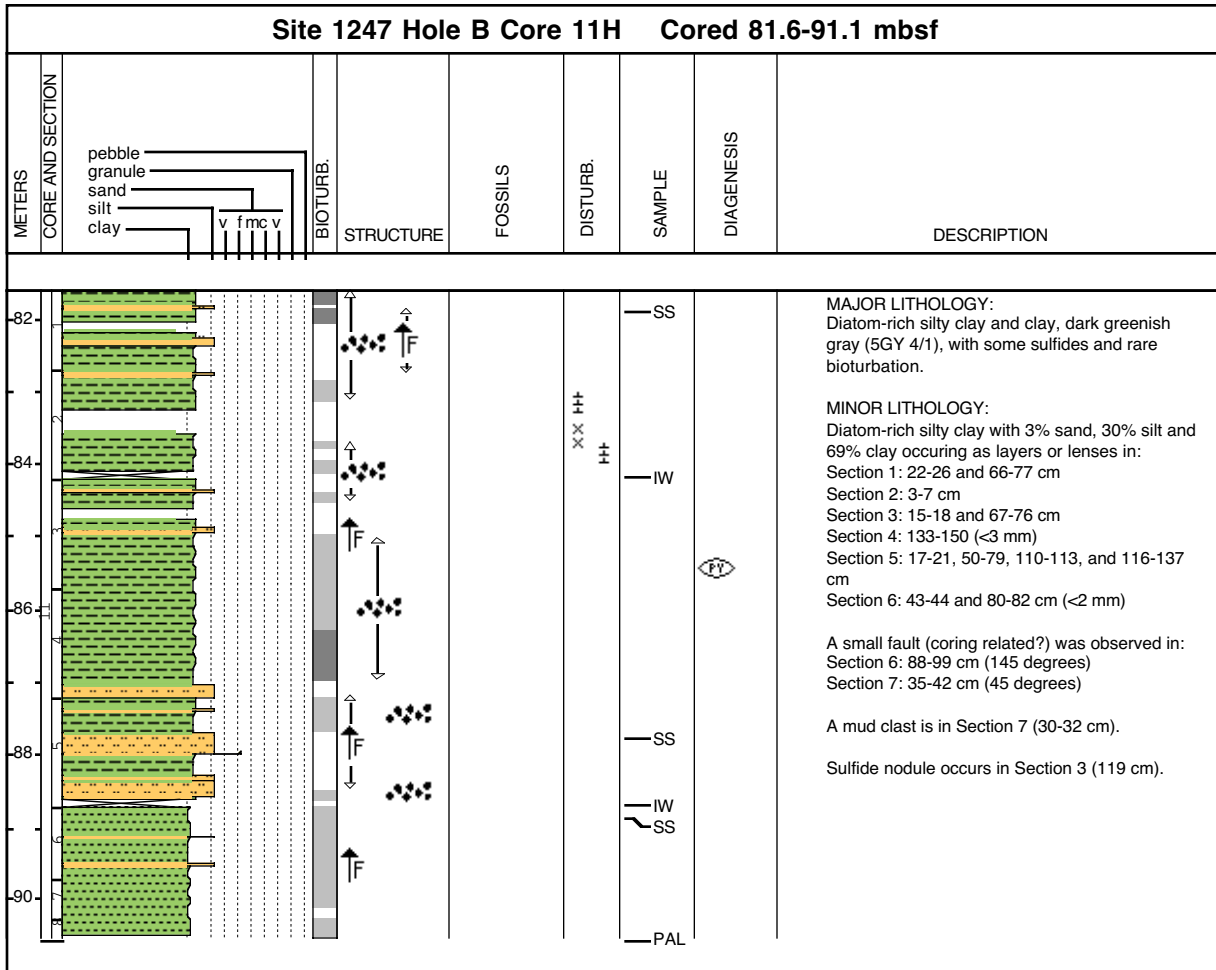
Core Photo



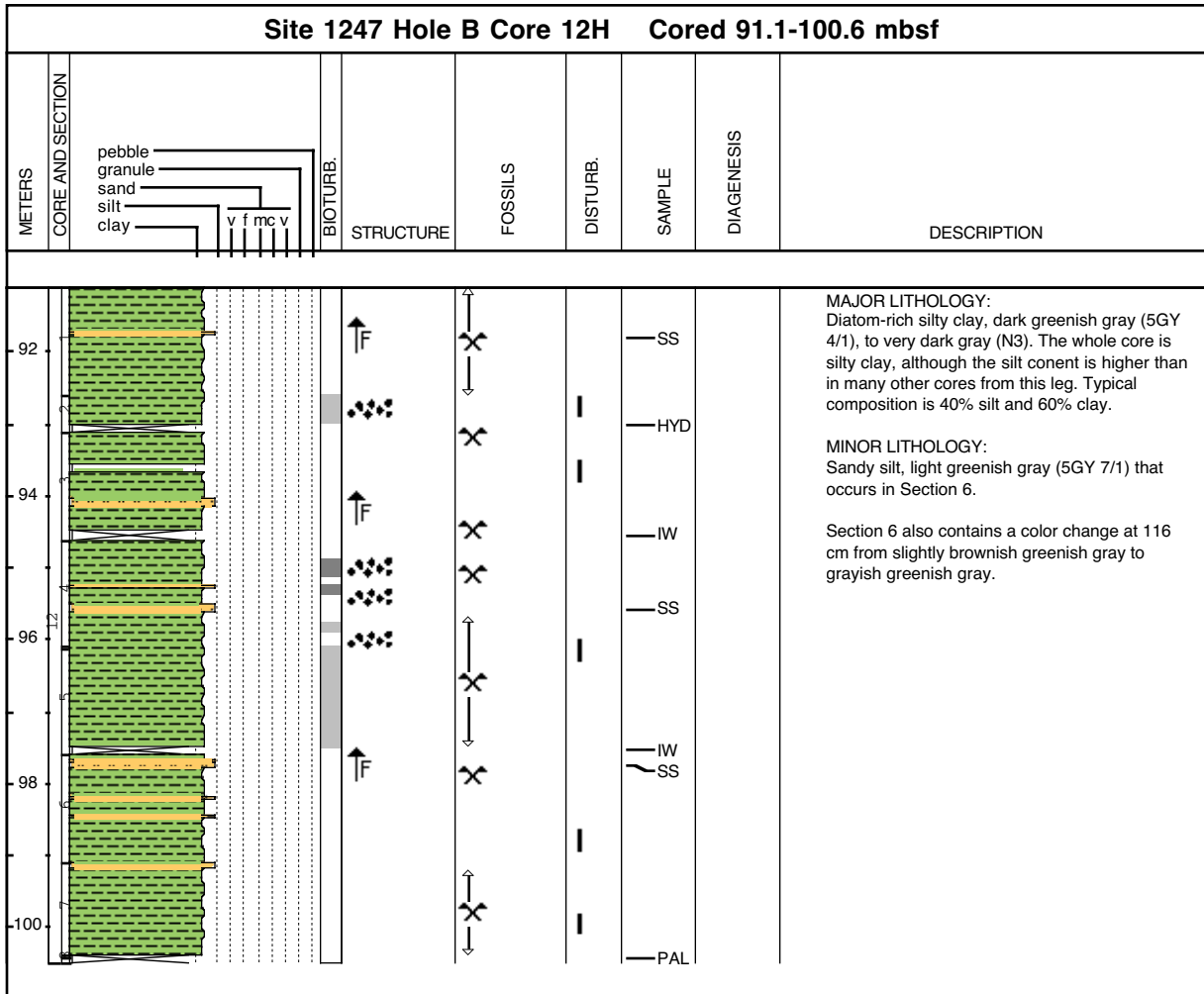
Core Photo



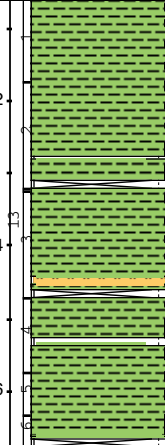
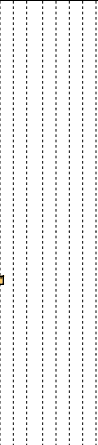

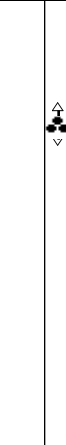

Core Photo



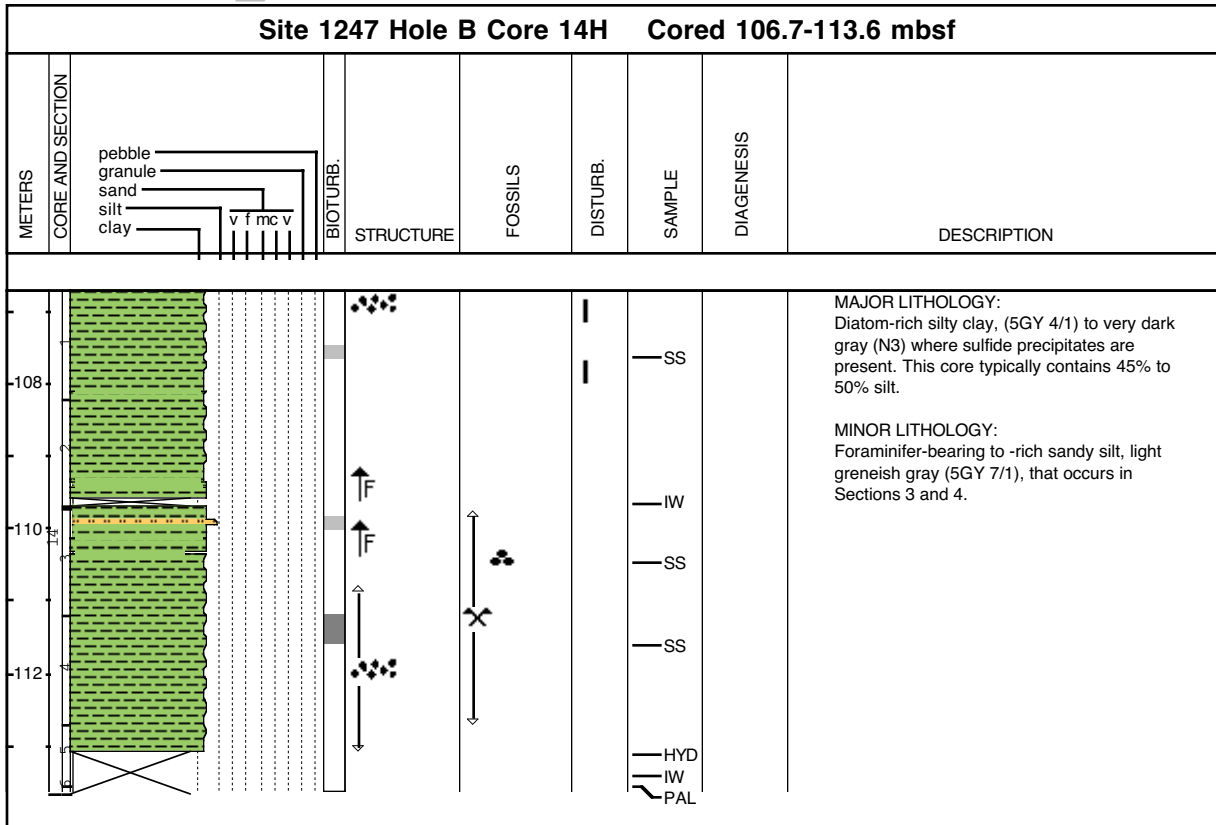
Core Photo



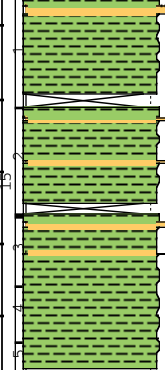
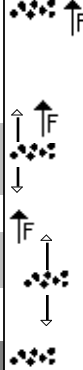
**Core Photo** 

Site 1247 Hole B Core 13H Cored 100.6-106.7 mbsf								
METERS	CORE AND SECTION	BIOTURB.	STRUCTURE	FOSSILS	DISTURB.	SAMPLE	DIAGENESIS	DESCRIPTION
102 104 106	 <p>pebble granule sand silt clay</p> <p>v f mc v</p>					SS SS IW SS IW SS PAL		<p><b>MAJOR LITHOLOGY:</b>                      Diatom-rich silty clay, dark greenish gray (5GY 4/1), with some sulfides and rare bioturbation.</p> <p><b>MINOR LITHOLOGY:</b>                      Diatom-bearing to -rich silty clay that is &lt;5% sand and &lt;20% shell fragments.</p> <p>Section 2 (30-55 cm and 93-100 cm) is cracked into small chips (gas hydrate related?).</p> <p>Section 5 (40-50 cm) is a sulfide-rich zone.</p>

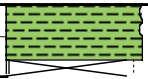

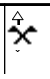

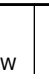
Core Photo 



Core Photo 

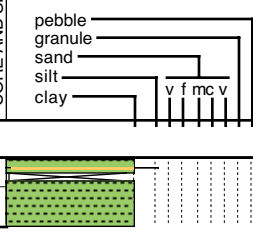
Site 1247 Hole B Core 15X Cored 113.6-123.3 mbsfz								
METERS	CORE AND SECTION	BIOTURB.	STRUCTURE	FOSSILS	DISTURB.	SAMPLE	DIAGENESIS	DESCRIPTION
	pebble granule sand silt clay v f mc v							
-114						SS		MAJOR LITHOLOGY: Diatom-bearing to -rich silty clay, dark greenish gray (5GY 4/1), with some sulfides and rare bioturbation.
-116						IW		MINOR LITHOLOGY: Silty sand with 50% sand occurring as layers and lenses in: Section 1: 14-25 cm (<4 mm), 103-108 cm and 115-118 cm (<1 cm) Section 2: 17-22 and 78-79 cm (2 mm) Section 3: 13-18 cm (<3 mm) and 54-55 cm (<5 mm)
-118						IW		
						SS		
						SS		
						PAL		

**Core Photo** 

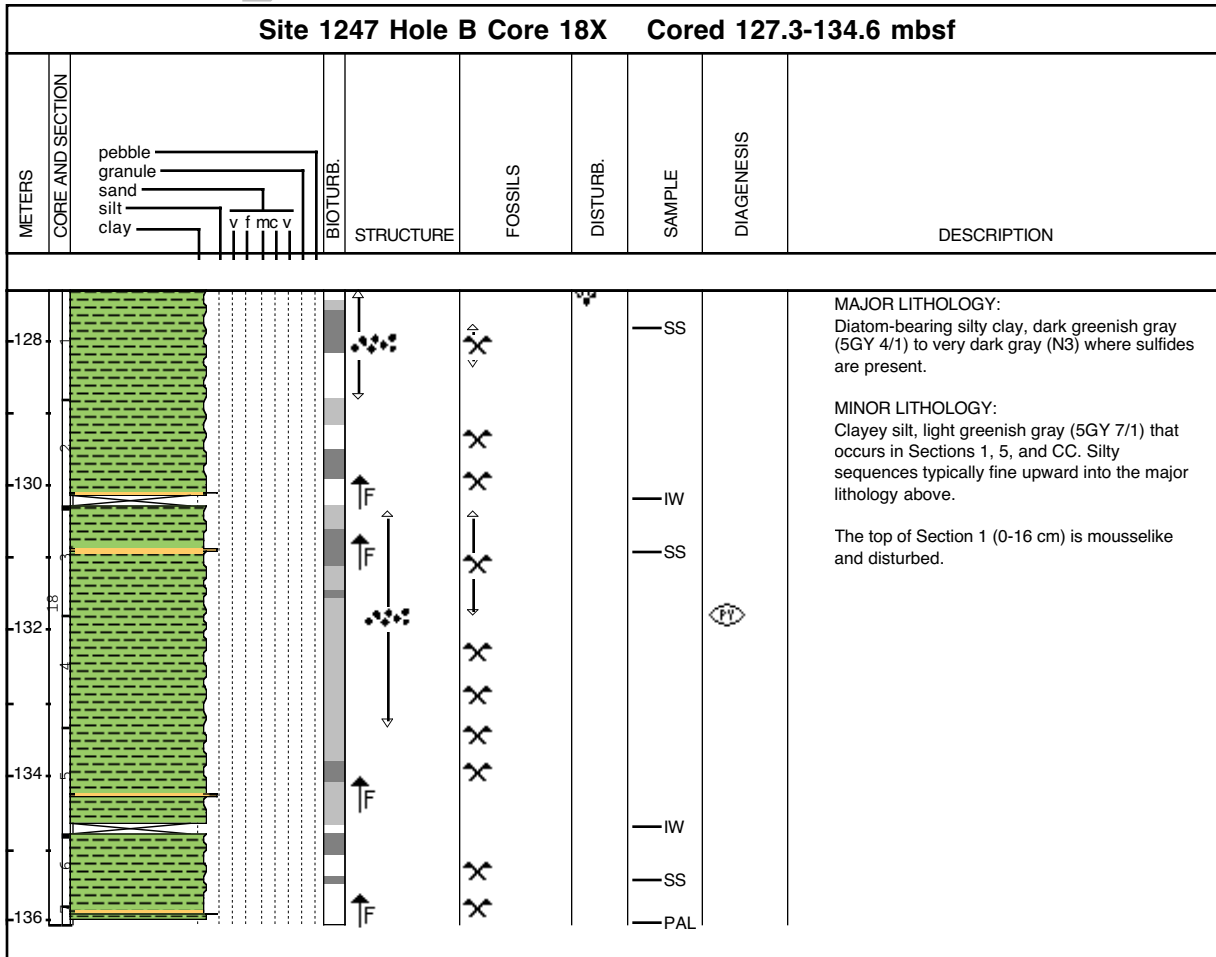
Site 1247 Hole B Core 16P Cored 123.3-124.3 mbsf								
METERS	CORE AND SECTION	BIOTURB.	STRUCTURE	FOSSILS	DISTURB.	SAMPLE	DIAGENESIS	DESCRIPTION
	pebble granule sand silt clay v f mc v							
124						IW		MAJOR LITHOLOGY: Silty clay, dark greenish gray (5GY 4/1).  This core is a pressure core and is disturbed.



**Core Photo** 

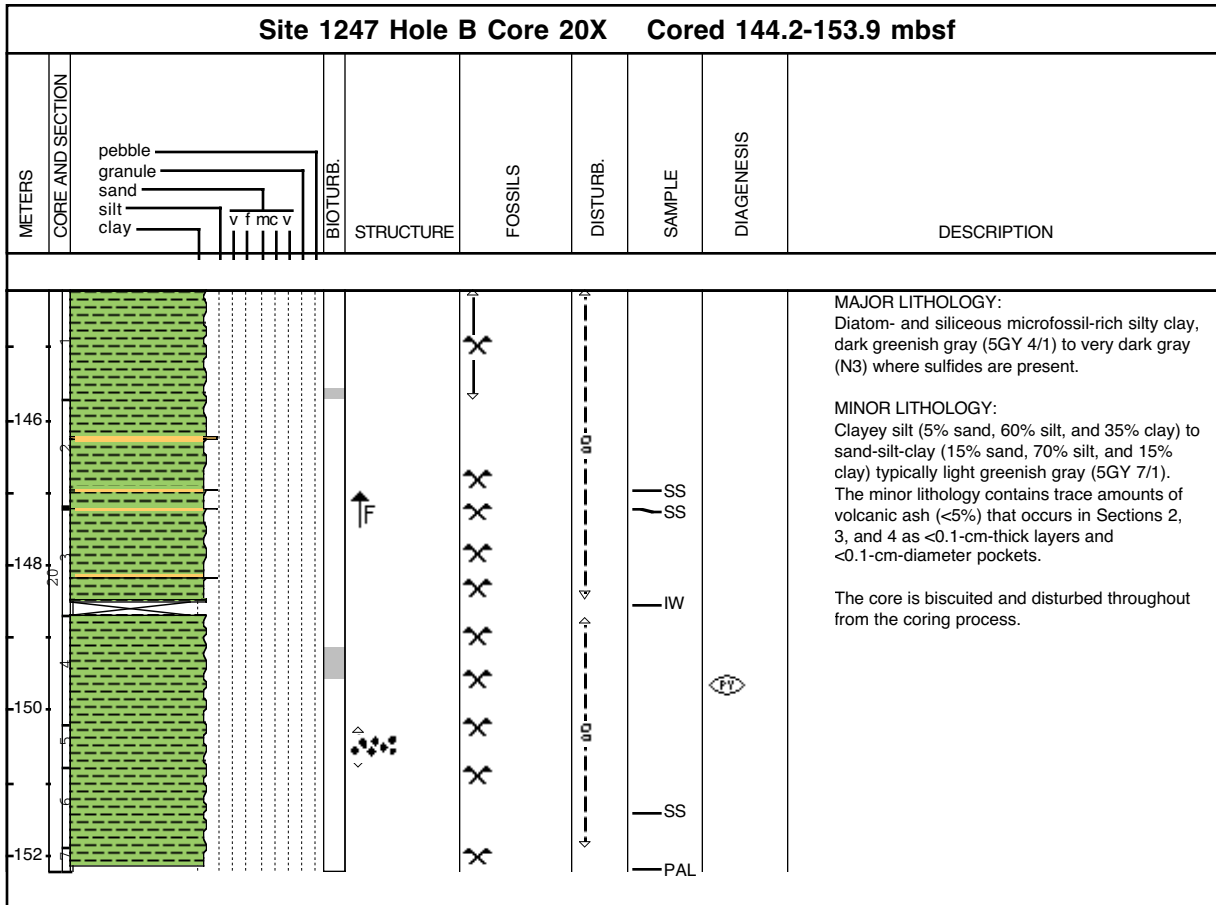
Site 1247 Hole B Core 17P Cored 125.3-126.3 mbsf								
METERS	CORE AND SECTION	BIOTURB.	STRUCTURE	FOSSILS	DISTURB.	SAMPLE	DIAGENESIS	DESCRIPTION
126	 <p>pebble granule sand silt clay</p> <p>v f mc v</p>					IW		<p>MAJOR LITHOLOGY:                      Silty clay, dark greenish gray (5GY 4/1).                      Sulfides mottles are moderate at the base of                      the core. This PCS core is in several fragments                      and was disturbed by drilling.</p> <p>MINOR LITHOLOGY:                      Silt layer at 13-16 cm.</p>

**Core Photo** 

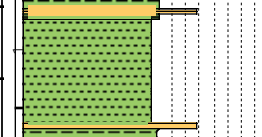
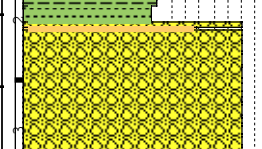
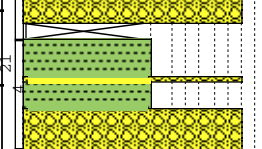
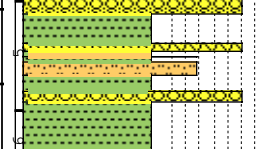




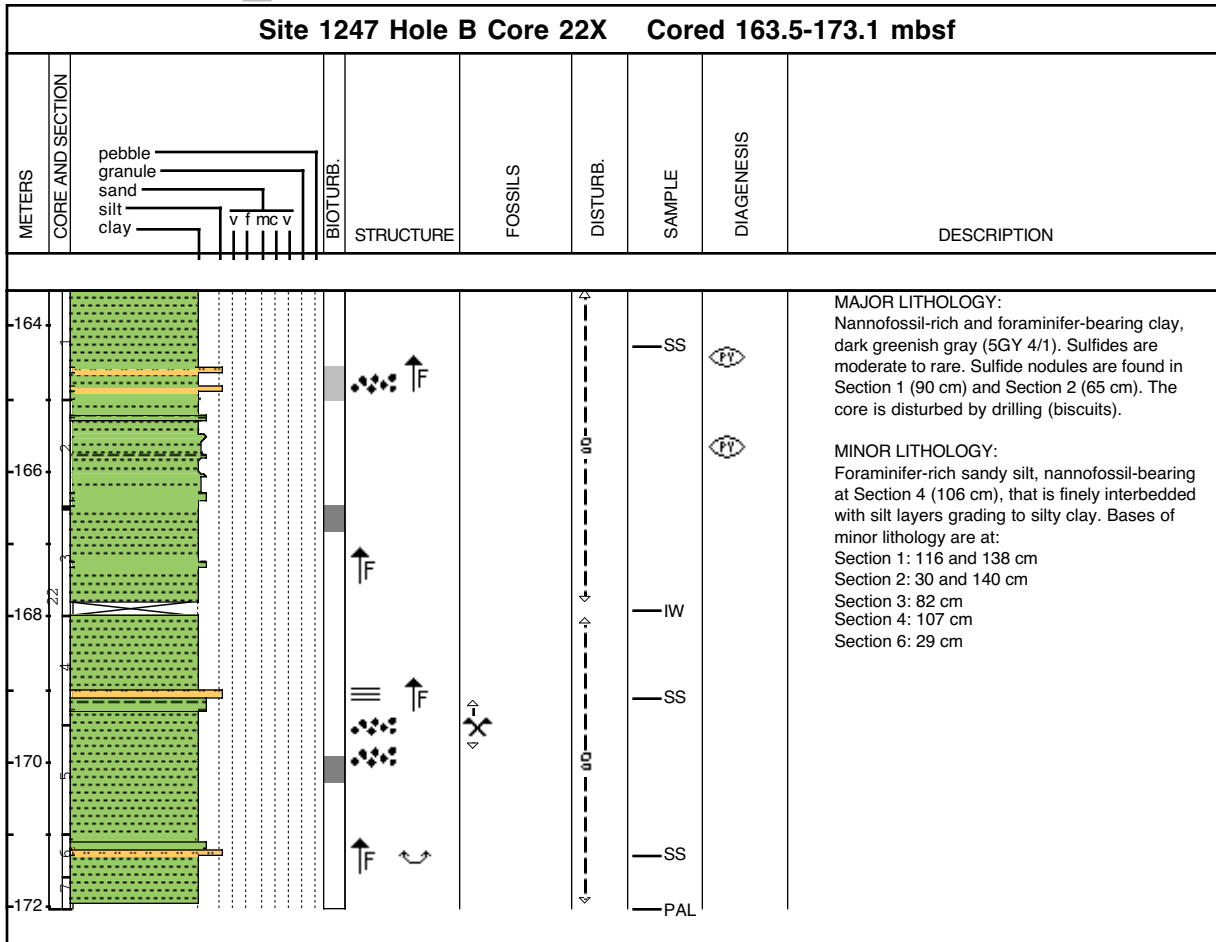
Core Photo 



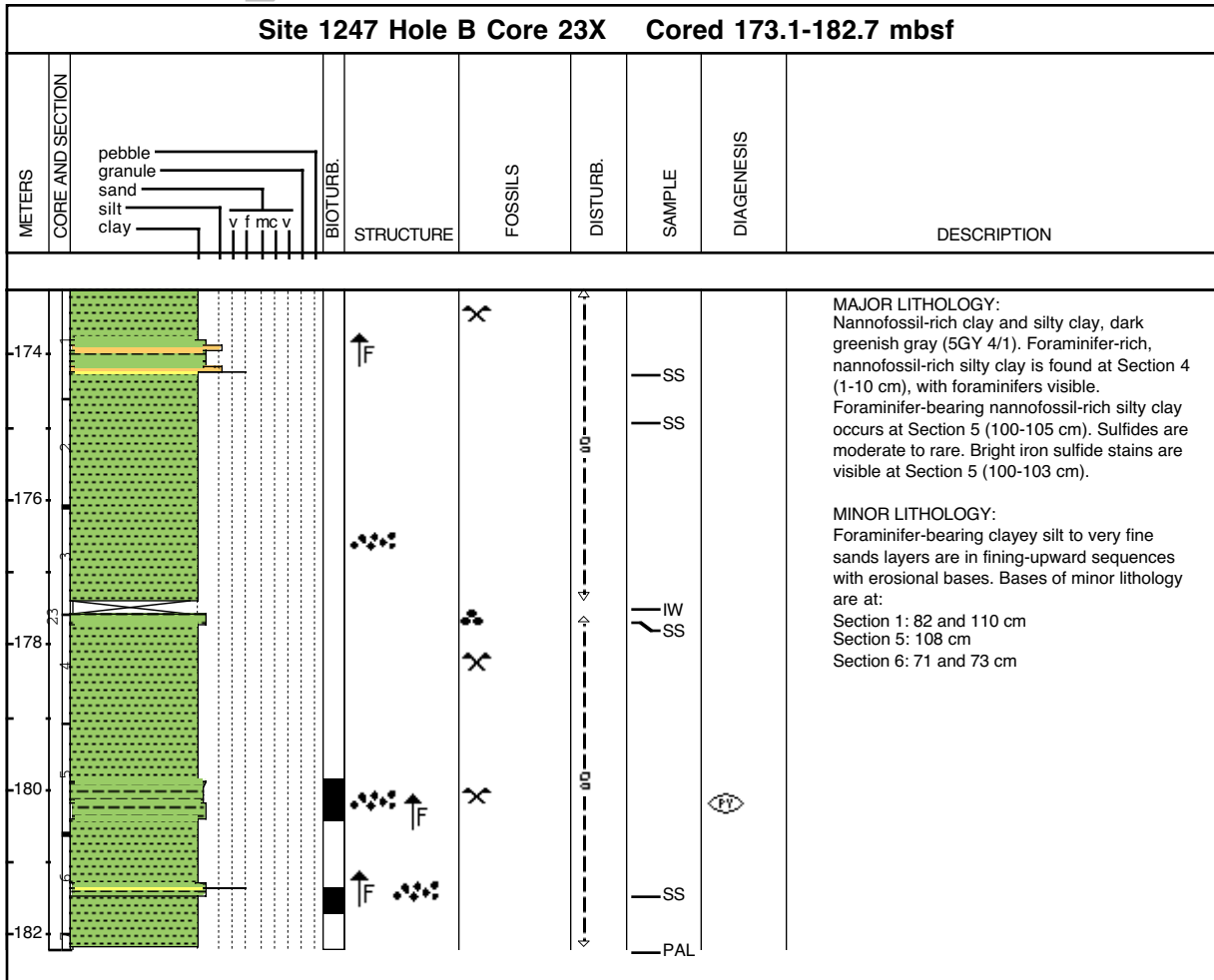
Core Photo 

Site 1247 Hole B Core 21X Cored 153.9-163.5 mbsf								
METERS	CORE AND SECTION	BIOTURB.	STRUCTURE	FOSSILS	DISTURB.	SAMPLE	DIAGENESIS	DESCRIPTION
	pebble granule sand silt clay v f mc v							
-156			↑ F			SS		MAJOR LITHOLOGY: Clay, dark greenish gray (5GY 4/1), that contains clasts of slightly lighter-colored 5GY 4/1 biogenic rich clay.  Foraminifer-bearing clay clasts are in: Section 2: 72-150 cm Section 4: 48-60 and 95-150 cm Section 5: 0-20 and 60-70 cm  Diatom-bearing clay clasts with some foraminifers are in: Section 3: 0-130 cm (full section)  Diatom-bearing clay is also present in a dark gray (N3) zone (Section 6, 90-103 cm) and marked at the top by a sharp color change at 90 cm.
-158			↑ F			SS		
-160			↑ F			SS		
-162			↑ F			SS		MINOR LITHOLOGY: Sandy silt that is present as graded beds with bases in: Section 1: 16 and 24 cm Section 2: 30 and 82 cm Section 5: 77 and 103 cm Section 6: 87 cm Section 7: 28 and 83 cm
						SS		
						SS		
						SS		
						PAL		

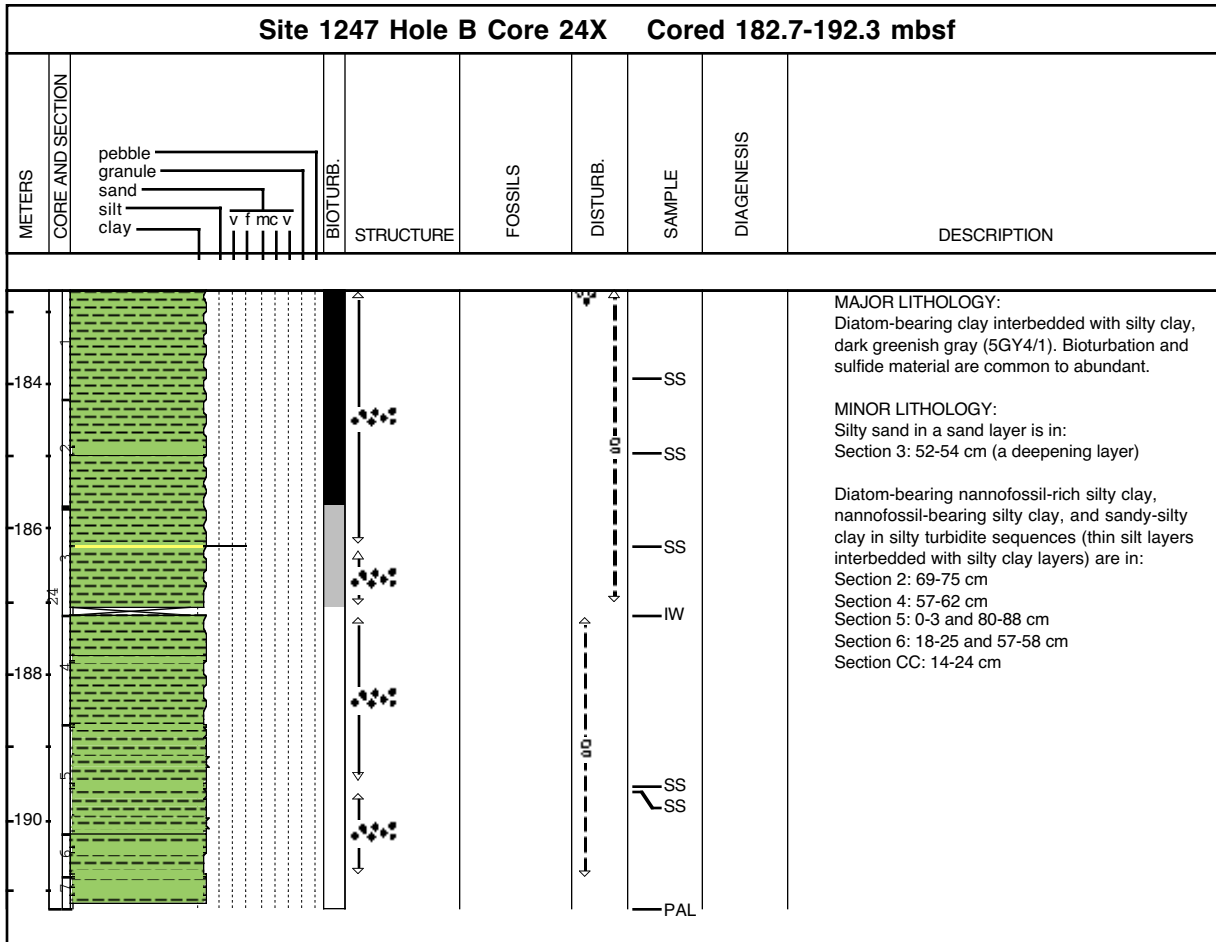
**Core Photo** 



**Core Photo** 

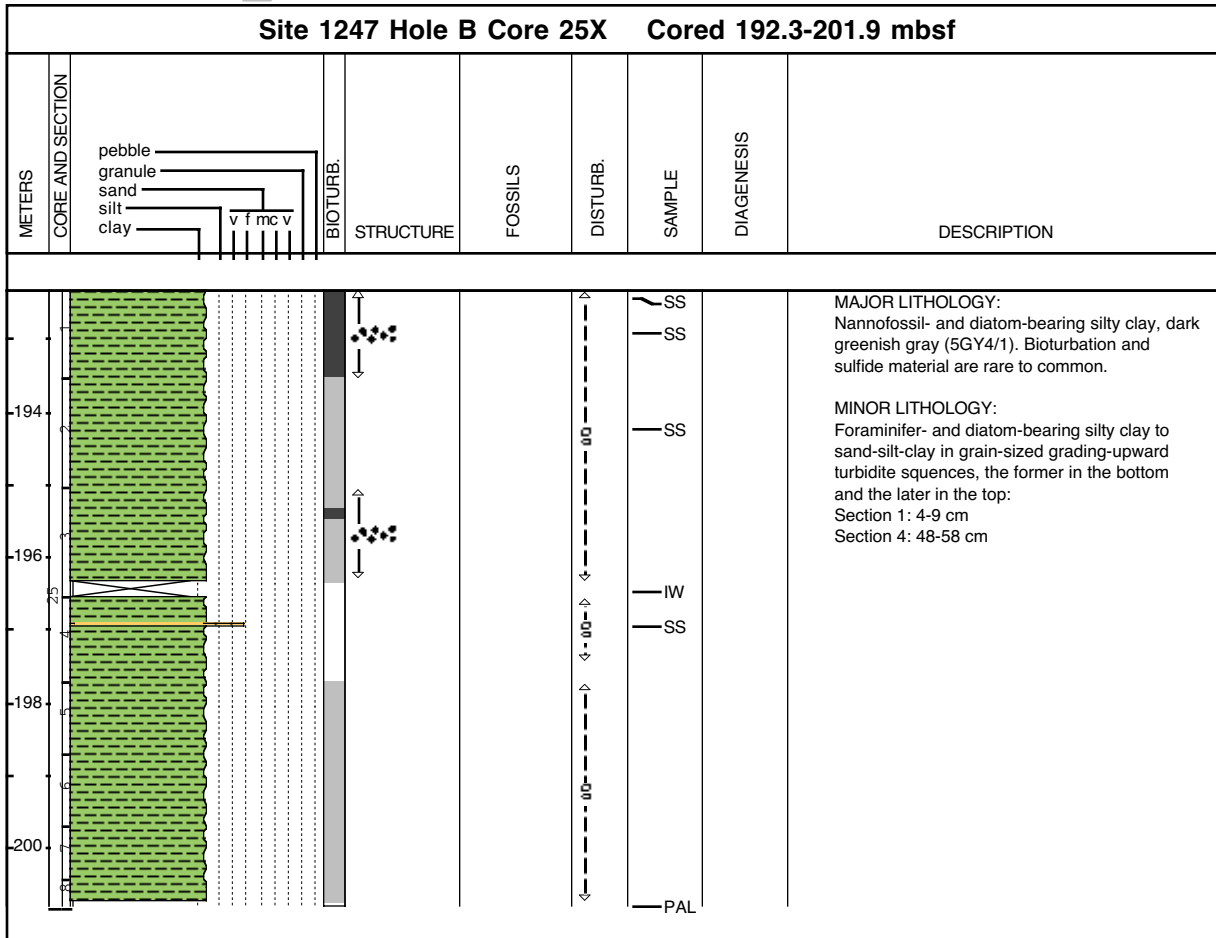


Core Photo 

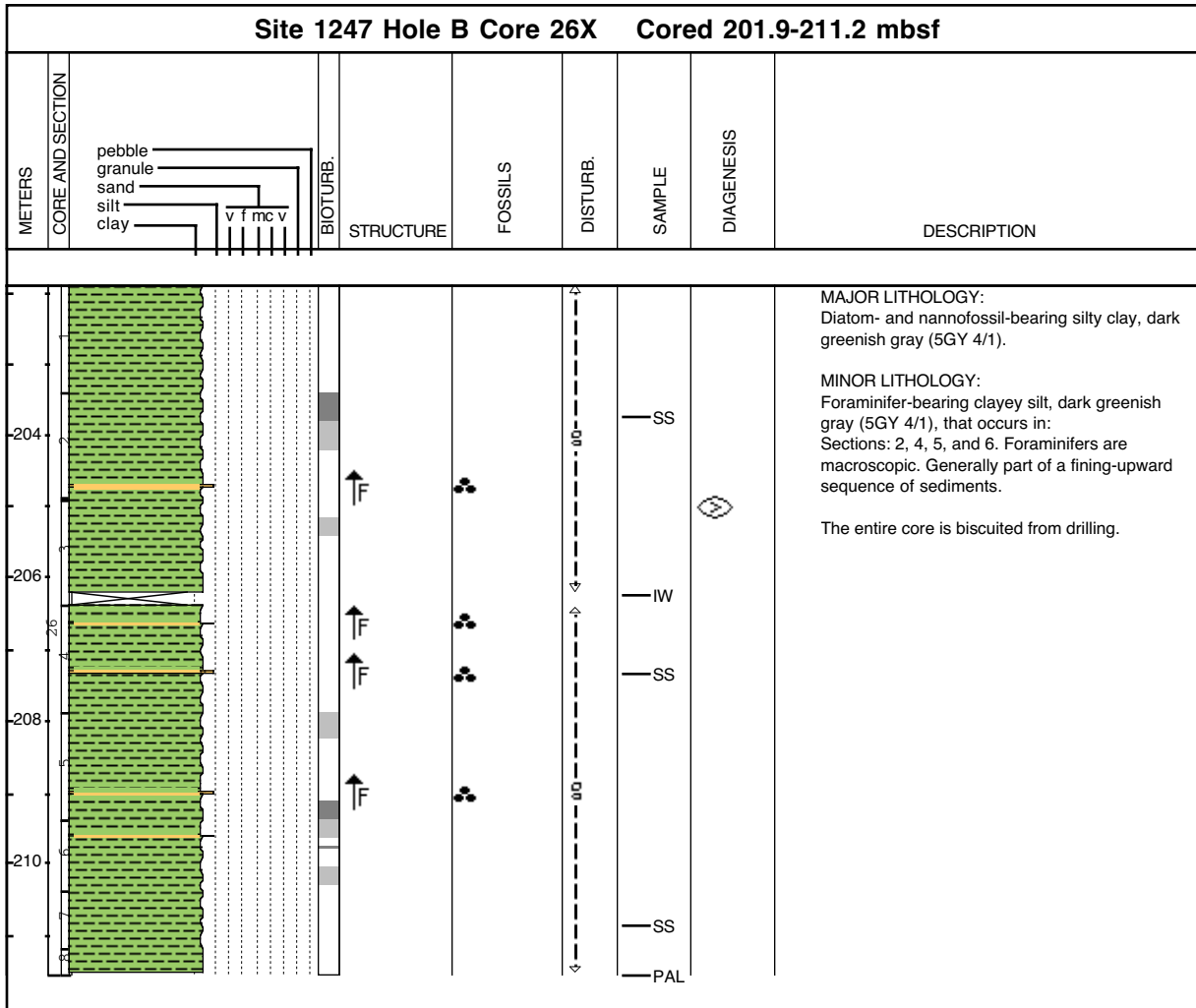




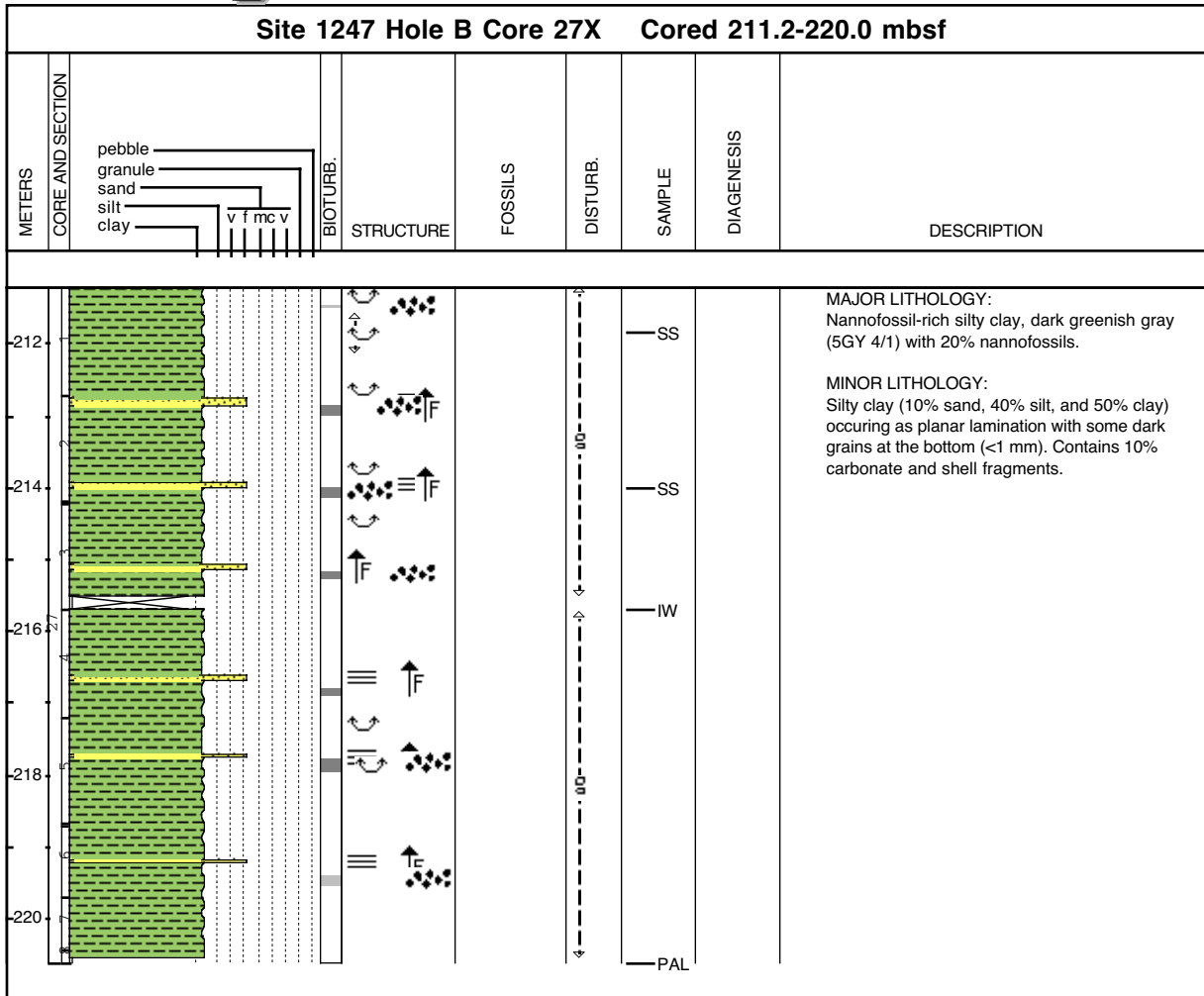
**Core Photo** 



Core Photo 



Core Photo 



Sample					Texture			Mineral										Biogenic					Comments	
Core	Core type	Section	Interval (cm)	Depth (mbsf)	Lithology	Sand	Silt	Clay	Biotite	Calcite needles	Carbonate	Feldspar	Glauconite	Muscovite	Opagues	Pyrite	Quartz	Volcanic Glass	Carbonaceous shell fragments	Diatoms	Foraminifers	Nannofossils		Siliceous spicules & others
<b>Hole B</b>																								
1	H	1	45	0.45	M		20	80		80			1		2					1			1	
1	H	2	39	1.89	D	1	30	69			1	1			3					5		1		
1	H	CC	13	3.27	M	1	80	19		70			1		3					1				1
2	H	3	20	6.80	D	3	30	67			1	1			2		10			2				2
2	H	4	122	9.32	M		10	90			90				1									
2	H	6	80	11.90	D		25	75				1	1		3		30			2				
3	H	1	60	13.70	D		25	75							4		5				2	8		
3	H	6	50	21.10	D	2	30	68				2								2	2			3
3	H	7	66	22.26	D		30	70							3		20			3		3		
5	H	1	61	25.21	D		40	60			8	5			3		10			5				3
5	H	2	93	27.03	M	10	50	40			10	15	5		15		40			2	3			
5	H	6	88	32.98	D		40	60				6			8		15			10				8
5	H	6	110	33.20	D		25	75				7			6		20			10	3			3
6	H	1	80	34.90	D	2	38	60	3				2		30		10			4				3
6	H	3	85	37.95	M	3	17	80			10	3					10		3		3			
6	H	5	36	40.46	M		60	40					1	2	5		10		3	30				2
7	H	1	50	44.10	M	20	80		3			3			3		20			2				
7	H	1	42	44.02	D		7	93	1						3		25			7				1
7	H	3	80	47.35	D		10	90	1								20			5				1
7	H	5	70	50.25	D		10	90				5			3		20			2				1
8	H	2	47	55.07	M	0	25	75		5		3	2				10		3		5	5		
8	H	3	126	57.36	M	50	40	10	2			10	2	3	6		30		4		6			
8	H	6	61	61.21	D	5	25	70	2			1	2		4		10			6	3	3		4
9	H	2	26	64.27	D	5	35	60	5											8	2	3		4
9	H	2	69	64.70	M	30	30	40	8											3	12			3
9	H	3	46	65.97	M	25	25	50							3		1			2	5	10		3
9	H	3	114	66.65	M	10	30	60							4					18				3
9	H	4	28	67.29	D	12	28	60							1					10	10	7		
9	H	4	112	68.13	M	20	10	70			60		5									2		
9	H	4	122	68.23	M	20	20	60			60				8									
10	H	1	27	72.37	D	3	22	75							3					6	1	3		1
10	H	1	38	72.48	D	12	28	60							2					8	5	3		3
10	H	1	102	73.12	D	8	27	65	2											8	1	5		1
10	H	6	13	79.73	D	10	25	65							1					8	5	6		2
10	H	6	75	80.35	D	7	23	70							1					8	6	6		
11	H	1	30	81.90	D	1	24	75							2		5		3	11	1	3		1
11	H	5	54	87.75	M	3	28	69			5	1	1		2		3			11	1			
11	H	6	15	88.86	D		20	80			2				1					11				
12	H	1	70	91.80	D		40	60	1			10	2				7			10				3
12	H	4	95	95.56	D		40	60	1		3						15	3		10	1			
12	H	6	11	97.72	M	30	60	10	2			40	3		3		50							
13	H	1	40	101.00	D	2	25	73							3		5			20				1
13	H	2	40	102.13	M	4	30	66							1	2				20	15		1	1
13	H	3	129	104.52	M	5	30	65				1			1		2		8	5	2			
13	H	5	30	106.03	D	1	25	74				1			1		5			11				

Sample					Texture			Mineral										Biogenic					Comments	
Core	Core type	Section	Interval (cm)	Depth (mbsf)	Lithology	Sand	Silt	Clay	Biotite	Calcite needles	Carbonate	Feldspar	Glauconite	Muscovite	Opagues	Pyrite	Quartz	Volcanic Glass	Carbonaceous shell fragments	Diatoms	Foraminifers	Nannofossils		Siliceous spicules & others
<b>Hole B (continued)</b>																								
14	H	1	89	107.59	D	3	47	50				10					30			15				6
14	H	3	76	110.46	M	30	60	10	5			20	5		7		40							
14	H	4	37	111.57	M	3	60	37			5	15	5		5		30		3		10			2
15	X	1	55	114.15	D	1	25	74									20			8				
15	X	3	55	117.15	M	50	30	20					1		15		15							
15	X	CC	5	118.40	D	2	25	73							3		5			11				2
18	X	1	50	127.80	D	3	30	67							7		7							2
18	X	3	59	130.89	M	10	50	40				7					15			4	3			
18	X	6	60	135.40	D		30	70				3			6		7			5				6
19	X	1	80	135.40	D	5	30	65				10			7		15			11				12
19	X	3	105	138.62	M	10	50	40	5		5	15	3		5		20				7			
19	X	5	28	140.85	M	15	70	15	5			30	5		3		30							
20	X	2	126	146.96	D	5	60	35				10	2				30	5						
20	X	3	4	147.24	M	15	70	15	5			10	8				20			2				9
20	X	6	57	151.36	D	3	40	57			3	2			2		15			8				10
21	X	1	24	154.14	M	60	40	0	3			7			2		60							
21	X	2	94	156.34	M	0	3	97	3											3	5			1
21	X	3	24	157.14	M	0	5	95							2		20			5	3			3
21	X	5	76	160.66	M	40	60	0				2		1			30							
21	X	5	96	160.86	M	30	70	0				2					10				25			
21	X	5	98	160.88	D	0	3	97												5				1
21	X	7	82	163.22	M	30	70	0				2			2		15				5			
22	X	1	73	164.23	D	0	10	90	2			3			3		8			4	5	25		2
22	X	4	105	169.05	M	30	60	10	5			6	3		3		15		4	3	11	5		3
22	X	6	24	171.24	M	40	50	10	4			5			3		20		10	3	15			4
23	X	1	109	174.19	D	0	10	90	2			3	25		3		5			2	4	40		3
23	X	4	4	177.64	M	5	40	55	3			3	2	1	4				10		25	15		
23	X	5	103	180.13	M	5	25	70	2			4	2		3		10		5	5	10	30		
23	X	6	95	181.55	M	5	55	40	2			3			2		20		8	2	5			
24	X	1	120	183.90	D	8	32	60							2					6			4	
24	X	2	23	184.43	M	15	25	60							4					5	3	10		4
24	X	3	53	186.23	M	50	40	10					8		5					2				1
24	X	4	20	187.40	D	8	27	65							2					4			4	1
24	X	5	85	189.55	M	20	70	10							3			1						1
24	X	5	80	189.50	M	12	28	60							4				3	4	3	8		3
25	X	1	8	192.38	M	12	28	60							1					7	5	2		1
25	X	1	59	192.89	D	10	30	60							2					8	2	8		3
25	X	2	60	194.13	D	7	28	65							3					7			5	3
25	X	4	48	197.01	M	30	40	30					2		3					2	1	2		2
26	X	2	32	203.72	D	0	25	75							5	3						5		6
26	X	4	93	207.33	M	5	55	40			8						10			5			5	6
26	X	7	44	210.84	D	0	25	75									5						10	
27	X	1	60	211.80	D		25	75											2	4	1	20		1
27	X	2	128	213.98	M	10	40	50									5		10		4			