

Site: WP-1B

Priority: 1

Position: 19°17.85'N, 135°05.95'E

Water Depth: 5658 meters below rig floor (mbrf)

Sediment Thickness: ~370 m

Target Drilling Depth: 470 mbsf

Approved Maximum Penetration: Pending PPSP approval

Seismic Coverage: Intersection of OT97 Line 1 and OT97 Line 3

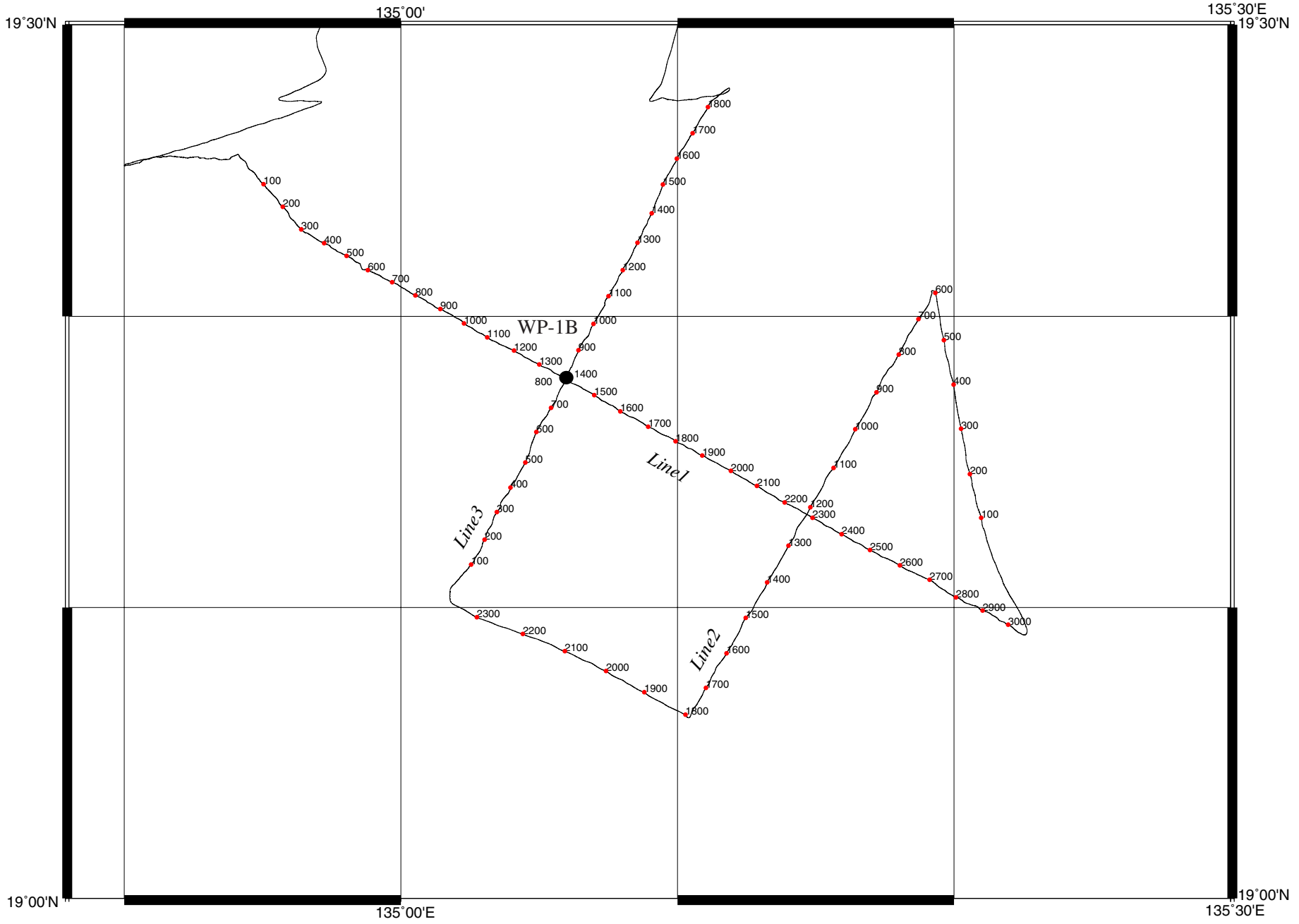
Objectives: The objectives of Site WP-1B are to

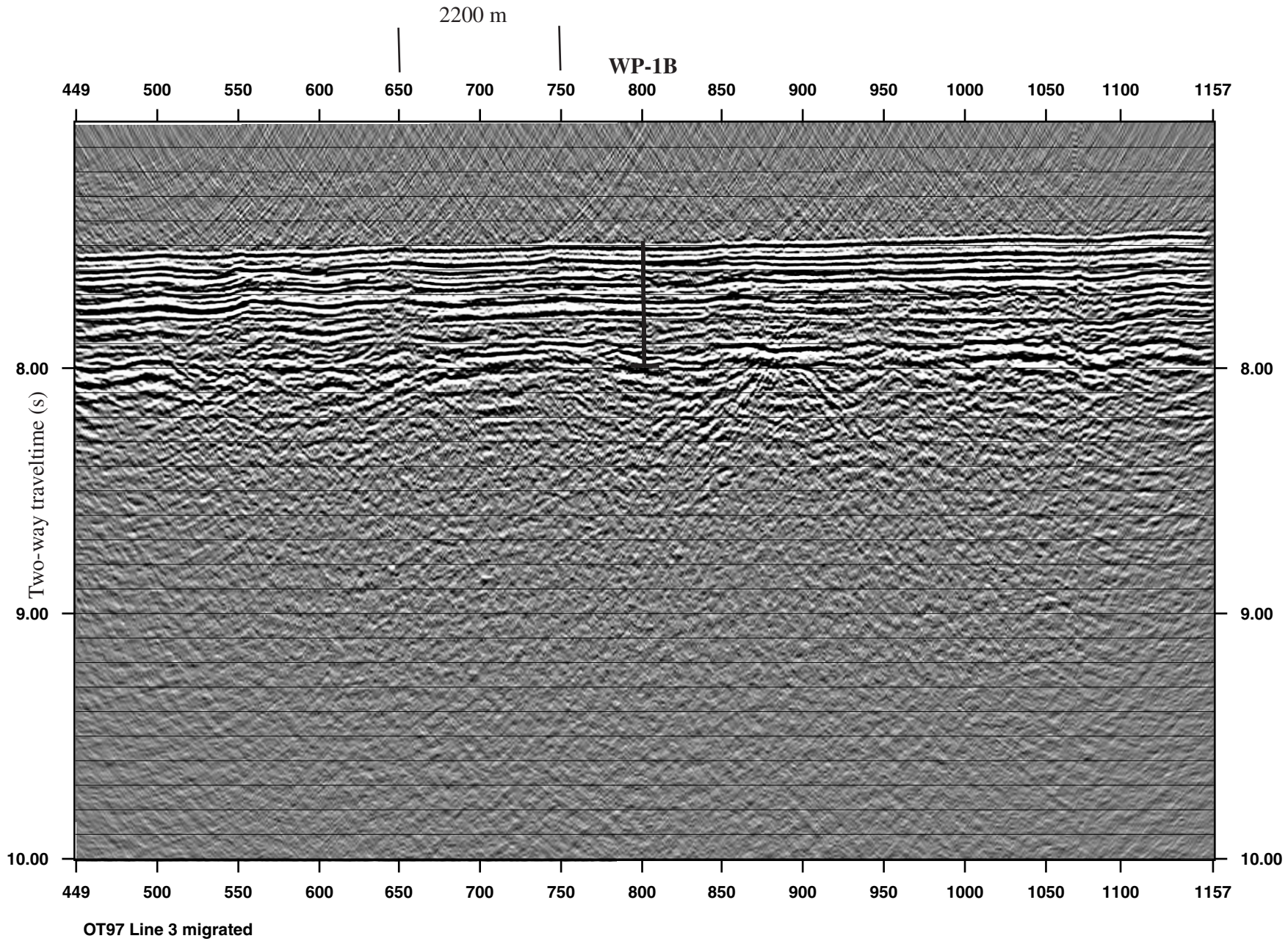
1. Install long-term geophysical borehole observatory to monitor global seismicity
2. Core 100 m of the upper basaltic oceanic crust to add knowledge of MORB chemistry and emplacement
3. Determine Philippine plate paleolatitude, rotation, and tectonic drift
4. Determine Tertiary climate record
5. Determine the history of Tertiary aeolian transport
6. Determine the regional ashfall record

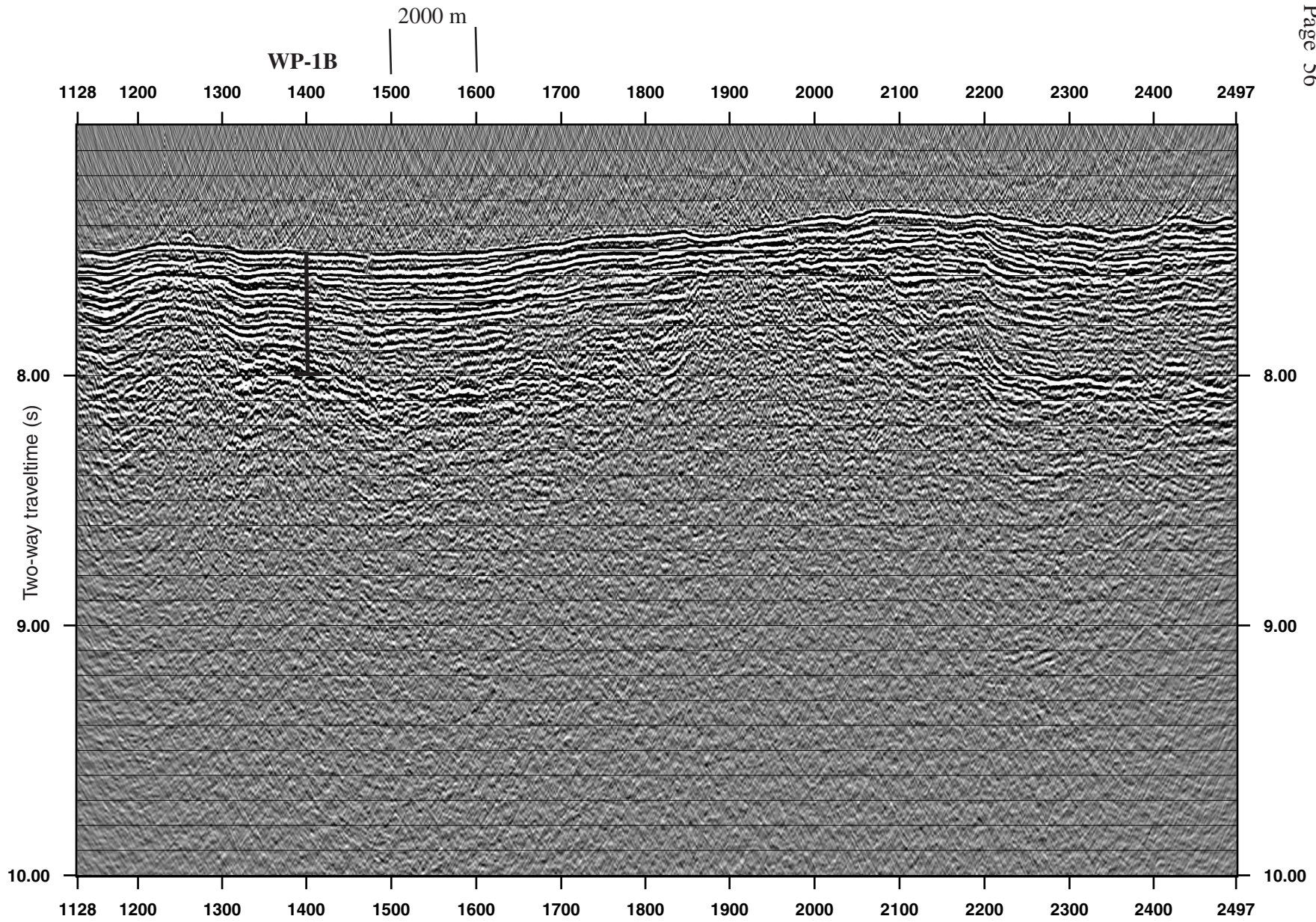
Drilling Program: APC/XCB to 380 mbsf, drill with RCB to 360 and core 100 m into basement (~470 mbsf). Drill instrumented borehole to ~470 mbsf, install reentry cone, and case through unstable section

Logging and Downhole Operations: Triple combo, FMS/sonic, DLL, UBI

Nature of Rock Anticipated: Brown pelagic silty clay underlain by Eocene-Oligocene nannofossil-bearing silty clays with basal polymictic breccias and tuffs; basalt







OT97 Line 1 migrated

SCIENTIFIC PARTICIPANTS*

Co-Chief

Matthew H. Salisbury
Department of Earth Sciences
Dalhousie University
Halifax, NS B3H 3J5
Canada
Internet: matts@agc.bio.ns.ca
Work: (902) 494-2866
Fax: (902) 426-6152

Co-Chief

Masanao Shinohara
Earthquake Research Institute
University of Tokyo
Yayoi 1-1-1, Bunkyo-ku
Tokyo 113-0032
Japan
Internet: mshino@eri.u-tokyo.ac.jp
Work: (81) 3-5841-5794
Fax: (81) 3-5841-8265

Staff Scientist

Carl Richter
Ocean Drilling Program
Texas A&M University
1000 Discovery Drive
College Station , TX 77845-9547
USA
Internet: richter@odpemail.tamu.edu
Work: (979) 845-2522
Fax: (979) 845-0876

Inorganic Geochemist

Stephen C. Komor
Water Resources Division
United States Geological Survey
30 Brown Road
Ithaca, NY 14850
USA
Internet: sckomor@usgs.gov
Work: (607) 266-0217, ext 3006
Fax: (607) 266-0521

Staffing is incomplete.

Leg 195
Scientific Prospectus
Page 58

Inorganic Geochemist
Michael J. Mottl
Department of Oceanography/SOEST
University of Hawaii at Manoa
1000 Pope Road
Honolulu, HI 96822
USA
Internet: mmottl@soest.hawaii.edu
Work: (808) 956-7006
Fax: (808) 956-9225

Microbiologist
Dr. Craig L. Moyer
Biology Department
Western Washington University
MS# 9160
Bellingham WA 98225
USA
Internet: emoyer@hydro.biol.wvu.edu
Work: (650) 360-7935
Fax: (650) 360-3148

Paleontologist (Nannofossil)
Kuo-Yen Wei
Department of Geology
National Taiwan University
245 Choushan Road0
Taipei, Taiwan 10617
China
Internet: weiky@ms.cc.ntu.edu.tw
Work: (886) 2-2369-1143
Fax: (886) 2-2363-6095

Igneous Petrologist
Massimo D'Antonio
Dipartimento di Geofisica E Vulcanologia
Università degli Studi di Napoli
Largo S. Marcellino, 10
Napoli 80138
Italy
Internet: masdanto@cds.unina.it
Work: (39) 8158-03116
Fax: (39) 8155-27631

Igneous Petrologist
Patricia B. Fryer
Department of Geology and Geophysics/SOEST
University of Hawaii at Manoa
2525 Correa Road

Honolulu, HI 96822
USA
Internet: pfryer@soest.hawaii.edu
Work: (808) 956-3146
Fax: (808) 956-3188

Igneous Petrologist
Ivan P. Savov
Department of Geology
University of South Florida, Tampa
4202 E. Fowler Ave.
Tampa, FL 33620
USA
Internet: savovip@yahoo.com
Work: (813) 974-6287
Fax: (813) 974-2654

Physical Properties Specialist
Simon M. Dean
Southampton Oceanography Centre
University of Southampton
School of Ocean and Earth Sciences
European Way
Southampton SO14 3ZH
United Kingdom
Internet: smd9@soc.soton.ac.uk
Work: (44) 23 8059 6565
Fax: (44) 23 8059 6554

Physical Properties Specialist
David Hart
Department of Geology and Geophysics
University of Wisconsin-Madison
1215 W. Dayton Street
Madison, WI 53706
USA
Internet: dhart@geology.wisc.edu
Work: (608) 265-9004
Fax: (608) 262-0693

Sedimentologist
Bernhard Diekmann
Alfred Wegener Institute for Polar and Marine Research
P.O. Box 12 01 61
D-27515 Bremerhaven
Germany
Internet: bdiekmann@awi-bremerhaven.de
Work: (49) 471-4831-1202
Fax: (49) 471-4831-1149

Leg 195
Scientific Prospectus
Page 60

Sedimentologist
Nicole Januszczak
Environmental Earth Sciences
University of Toronto at Scarborough
Geology Lab (S435)
1265 Military Trail
Scarborough, ON M1C 1A4
Canada
Internet: janus@scar.utoronto.ca
Work: (416) 287-7238
Fax: (416) 287-7279

Seismologist
Eiichiro Araki
Deep Sea Research Department
Japan Marine Science and Technology Center
2-15 Natsushima-cho
Yokosuka, Kanagawa-pref 237-0061
Japan
Internet: araki@jamstec.go.jp
Work: (81) 468-67-3954
Fax: (81) 468-66-5541

CORK Specialist
K. Michelle Edwards
Rosenstiel School of Marine and Atmospheric Science
University of Miami
Marine Geology and Geophysics
4600 Rickenbacker Causeway
Miami, FL 33149
USA
Internet: kedwards@rsmas.miami.edu
Work: (305) 361-4137
Fax: (305) 361-4137

Undergraduate Student Trainee
William S. Hammon III
Department of Geosciences
University of Texas at Dallas
Internet: shammon@utdallas.edu
Work: (972) 883-2422

Undergraduate Student Trainee
Mette B. Kristensen
Geologisk Institut bygn. 110
Aarhus Universitet
Univeritets Parken

Aarhus C 8000
Denmark
Internet: mbundk@hotmail.com
Work: (49) 8942 2501

LDEO Logging Staff Scientist
Samantha R. Barr
Department of Geology
University of Leicester
University Road
Leicester LE1 7RH
United Kingdom
Internet: srb7@le.ac.uk
Work: (44) 116-252-3608
Fax: (44) 116-252-3918

LDEO Logging Trainee
Philippe Gaillot
Lamont-Doherty Earth Observatory
Columbia University
15, rue P. Janet
Appt 214
Strasbourg 67000
France
Internet: gaillot@renass1.u-strasbg.fr
Work: (33) 388 41 64 71
Fax: (33) 388 41 66 02

Operations Manager
Michael A. Storms
Ocean Drilling Program
Texas A&M University
1000 Discovery Drive
College Station, TX 77845-9547
USA
Internet: storms@odpemail.tamu.edu
Work: (979) 845-2101
Fax: (979) 845-2308

Development Engineer
Derryl Schroeder
Ocean Drilling Program
Texas A&M University
1000 Discovery Drive
College Station, TX 77845-9547
USA

Leg 195
Scientific Prospectus
Page 62

Internet: schroeder@odpemail.tamu.edu
Work: (979) 845-8481
Fax: (979) 845-2308

Laboratory Officer
Roy Davis
Ocean Drilling Program
Texas A&M University
1000 Discovery Drive
College Station, TX 77845-9547
USA
Internet: davis@odpemail.tamu.edu
Work: (979) 845-2367
Fax: (979) 845-0876

Marine Lab Specialist: Yeoperson
Michiko Hitchcox
Ocean Drilling Program
Texas A&M University
1000 Discovery Drive
College Station, TX 77845-9547
USA
Internet: hitchcox@odpemail.tamu.edu
Work: (979) 845-2483
Fax: (979) 845-0876

Marine Lab Specialist: Chemistry
Dennis Graham
Ocean Drilling Program
Texas A&M University
1000 Discovery Drive
College Station, TX 77845-9547
USA
Internet: graham@odpemail.tamu.edu
Work: (979) 845-8482
Fax: (979) 845-0876

Marine Lab Specialist: Chemistry
Chieh Peng
Ocean Drilling Program
Texas A&M University
1000 Discovery Drive
College Station, TX 77845-9547
USA
Internet: peng@odpemail.tamu.edu
Work: (979) 845-2480
Fax: (979) 845-0876

Marine Lab Specialist: Core
Maniko Kamei
Ocean Drilling Program
Texas A&M University
1000 Discovery Drive
College Station, TX 77845-9547
USA
Internet: kamei@odpemail.tamu.edu
Work: (979) 458-1865
Fax: (979) 845-0876

Marine Lab Specialist: Curator
Jessica Huckemeyer
Ocean Drilling Program
Texas A&M University
1000 Discovery Drive
College Station, TX 77845
USA
Internet: huckemeyer@odpemail.tamu.edu
Work: (979) 845-4822
Fax: (979) 845-1303

Marine Lab Specialist: Downhole Tools, Thin Sections
Gus Gustafson
Ocean Drilling Program
Texas A&M University
1000 Discovery Drive
College Station, TX 77845-9547
USA
Internet: gustafson@odpemail.tamu.edu
Work: (979) 845-8482
Fax: (979) 845-0876

Marine Lab Specialist: Paleomagnetism
Charles A. Endris
Ocean Drilling Program
Texas A&M University
1000 Discovery Drive
College Station, TX 77845
USA
Internet: endris@odpemail.tamu.edu
Work: (979) 845-5135
Fax: (979) 845-0876

Marine Lab Specialist: Photographer
Cyndi J. Prince
Ocean Drilling Program
Texas A&M University

Leg 195
Scientific Prospectus
Page 64

1000 Discovery Drive
College Station, TX 77845
USA

Internet: prince@odpemail.tamu.edu
Work: (979) 845-2483
Fax: (979) 845-0876

Marine Lab Specialist: Physical Properties
Anastasia Ledwon
Ocean Drilling Program
Texas A&M University
1000 Discovery Drive
College Station, TX 77845-9547
USA

Internet: ledwon@odpemail.tamu.edu
Work: (979) 845-9186
Fax: (979) 845-0876

Marine Lab Specialist: X-Ray
Robert Olivas
Ocean Drilling Program
Texas A&M University
1000 Discovery Drive
College Station, TX 77845-9547
USA

Internet: olivas@odpemail.tamu.edu
Work: (979) 845-2481
Fax: (979) 845-0876

Marine Electronics Specialist
Randy W. Gjesvold
Ocean Drilling Program
Texas A&M University
1000 Discovery Drive
College Station , TX 77845-9547
USA

Internet: gjesvold@odpemail.tamu.edu
Work: (979) 845-8482
Fax: (979) 845-0876

Marine Computer Specialist
Michael J. Hodge
Ocean Drilling Program
Texas A&M University
1000 Discovery Drive
College Station, TX 77845-9547
USA

Internet: hodge@odpemail.tamu.edu
Work: (979) 862-4845