

**Site:** SHAT-9B

**Priority:** 2

**Position:** 35°22.66572'N, 159°21.0864'E

**Water Depth:** 4725 m

**Sediment Thickness:** 803 m

**Target Drilling Depth:** 200 m

**Approved Maximum Penetration:** 1003 mbsf

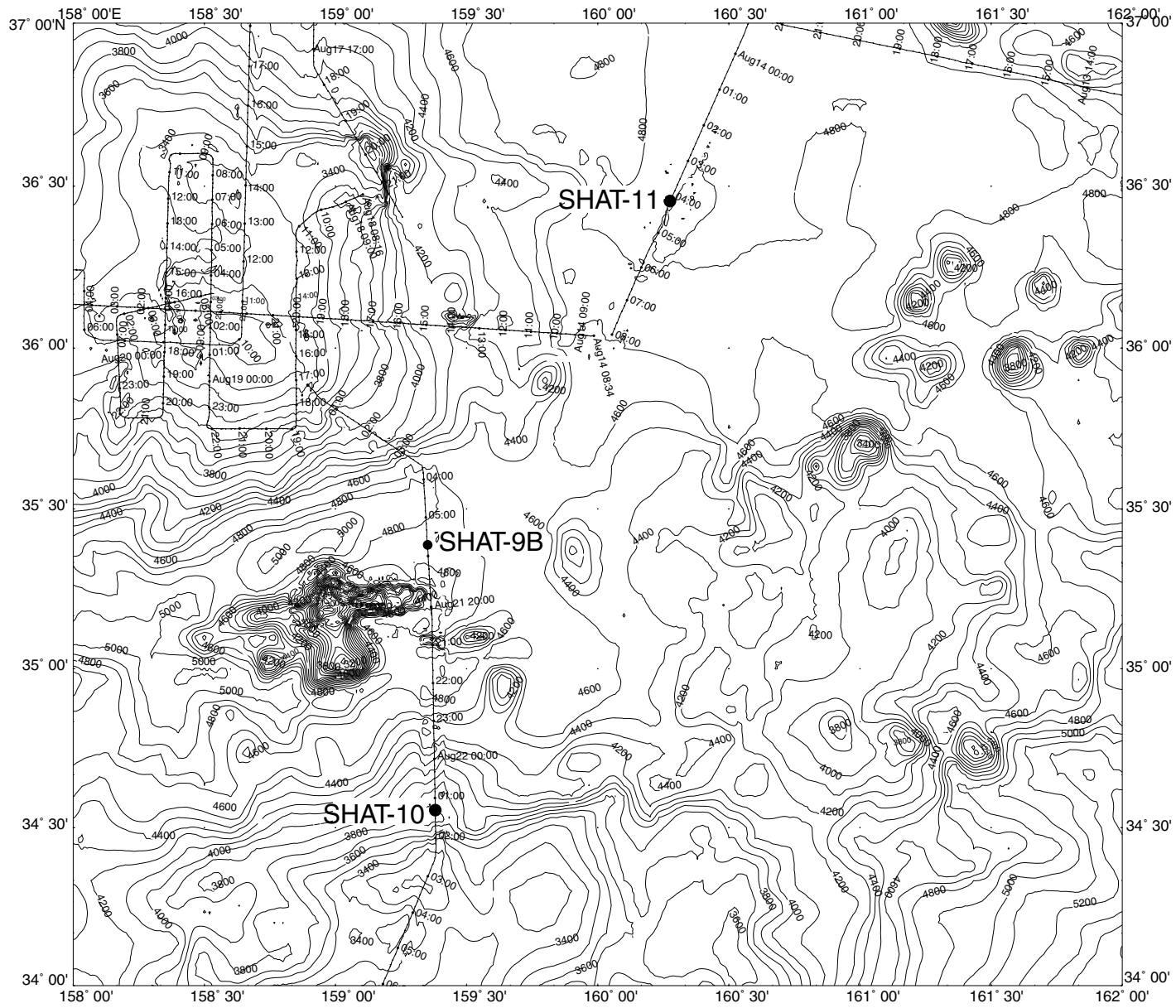
**Seismic Coverage:** Sager Line 12, part 2.

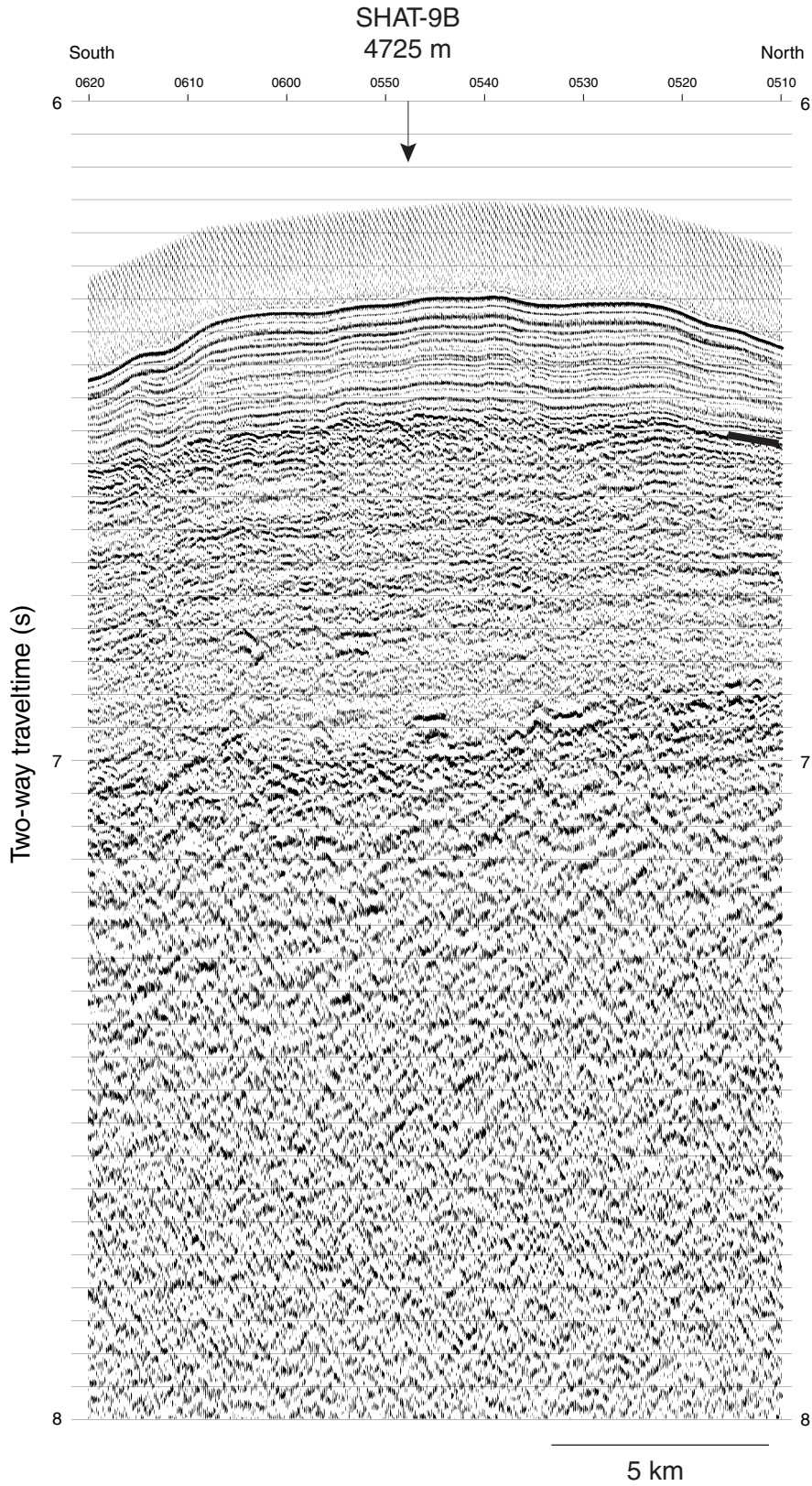
**Objective:** The objective of Site SHAT-9B is to core a Paleogene and Upper Cretaceous sequence for paleoceanographic study.

**Drilling Program:** Double APC.

**Logging and Downhole:** None.

**Nature of Rock Anticipated:** Red clay, calcareous ooze, and chalk.





**Site:** SHAT-10

**Priority:** 2

**Position:** 34°33.318'N, 159°22.831'E

**Water Depth:** 3799 m

**Sediment Thickness:** 188 m

**Target Drilling Depth:** 188 m

**Approved Maximum Penetration:** 328 mbsf

**Seismic Coverage:** Sager Line 13

**Objective:** The objective of Site SHAT-10 is to core a Paleogene and Upper Cretaceous sequence for paleoceanographic study.

**Drilling Program:** Double APC.

**Logging and Downhole:** None.

**Nature of Rock Anticipated:** Calcareous ooze and chalk.

[See SHAT-9 trackline.](#)



**Site:** SHAT-11

**Priority:** 2

**Position:** 36°27.601'N, 160°16.955'E

**Water Depth:** 4800 m

**Sediment Thickness:** 1046 m

**Target Drilling Depth:** 200 m

**Approved Maximum Penetration:** 1246 mbsf

**Seismic Coverage:** Sager Line 7b

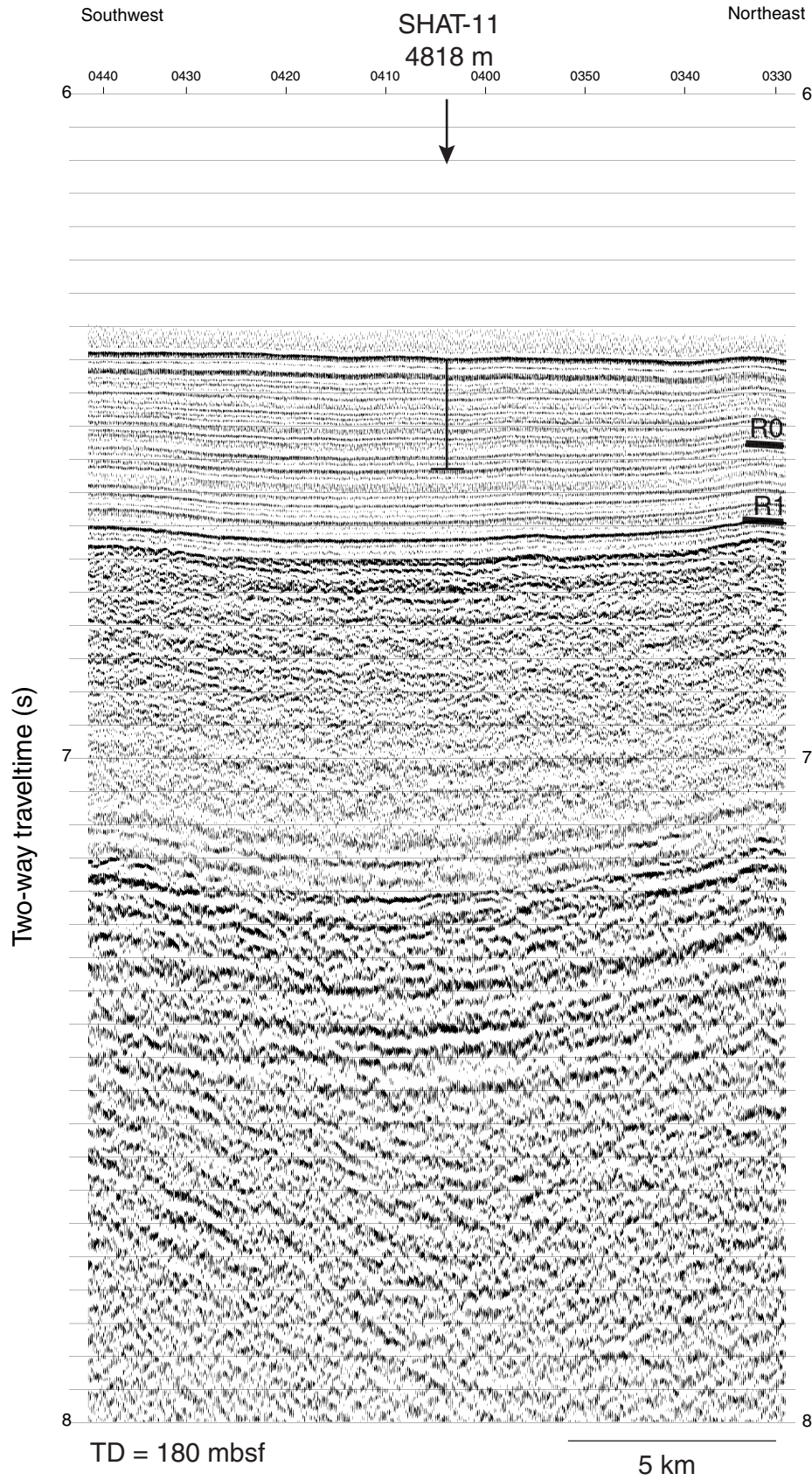
**Objective:** The objective of Site SHAT-11 is to core a Paleogene and Upper Cretaceous sequence for paleoceanographic study.

**Drilling Program:** Double APC.

**Logging and Downhole:** None.

**Nature of Rock Anticipated:** Red clay, calcareous ooze, and chalk.

[See SHAT-9 trackline.](#)



**Site:** SHAT-12

**Priority:** 2

**Position:** 39°14.959'N, 163°10.955'E

**Water Depth:** 4673 m

**Sediment Thickness:** 568 m

**Target Drilling Depth:** 200 m

**Approved Maximum Penetration:** 768 mbsf

**Seismic Coverage:** Sager Line 4

**Objective:** The objective of Site SHAT-12 is to core a Paleogene and Upper Cretaceous sequence for paleoceanographic study.

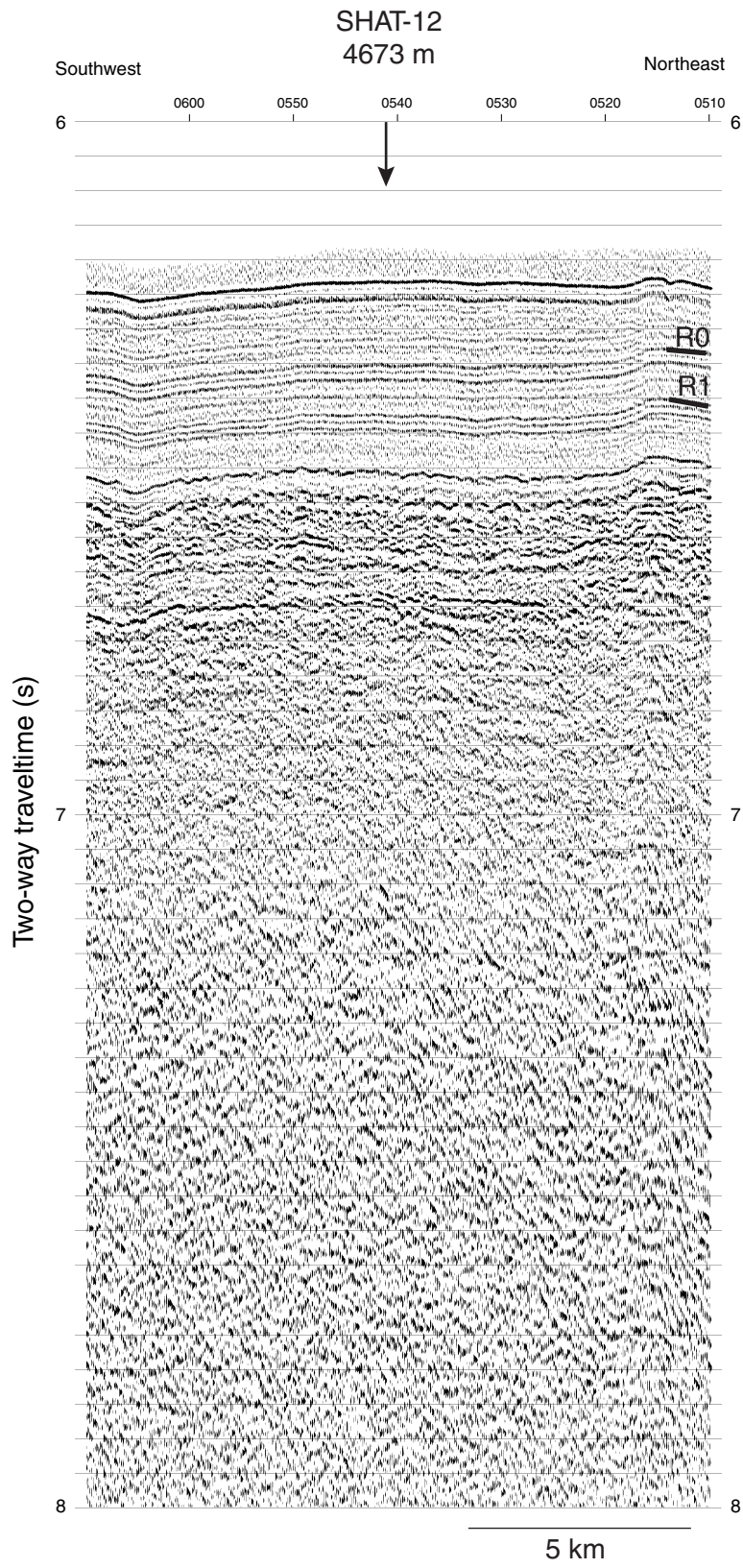
**Drilling Program:** Double APC.

**Logging and Downhole:** None.

**Nature of Rock Anticipated:** Red clay, calcareous ooze, and chalk.







**Site:** SHAT-13

**Priority:** 2

**Position:** 37°33.911'N, 162°51.630'E

**Water Depth:** 3750 m

**Sediment Thickness:** 143 m

**Target Drilling Depth:** 193 m

**Approved Maximum Penetration:** 343 mbsf

**Seismic Coverage:** Sager Line 5

**Objective:** The objective of Site SHAT-13 is to core basement for geochemical analysis and geochronology.

**Drilling Program:** RCB.

**Logging and Downhole:** None.

**Nature of Rock Anticipated:** Calcareous ooze and basalt.

See SHAT-5C trackline.



**Site:** SHAT-14

**Priority:** 2

**Position:** 31°25.51'N, 157°15.43'E

**Water Depth:** 4322 m

**Sediment Thickness:** 50 m

**Target Drilling Depth:** 100 m

**Approved Maximum Penetration:** 250 mbsf

**Seismic Coverage:** Sager Line 17B

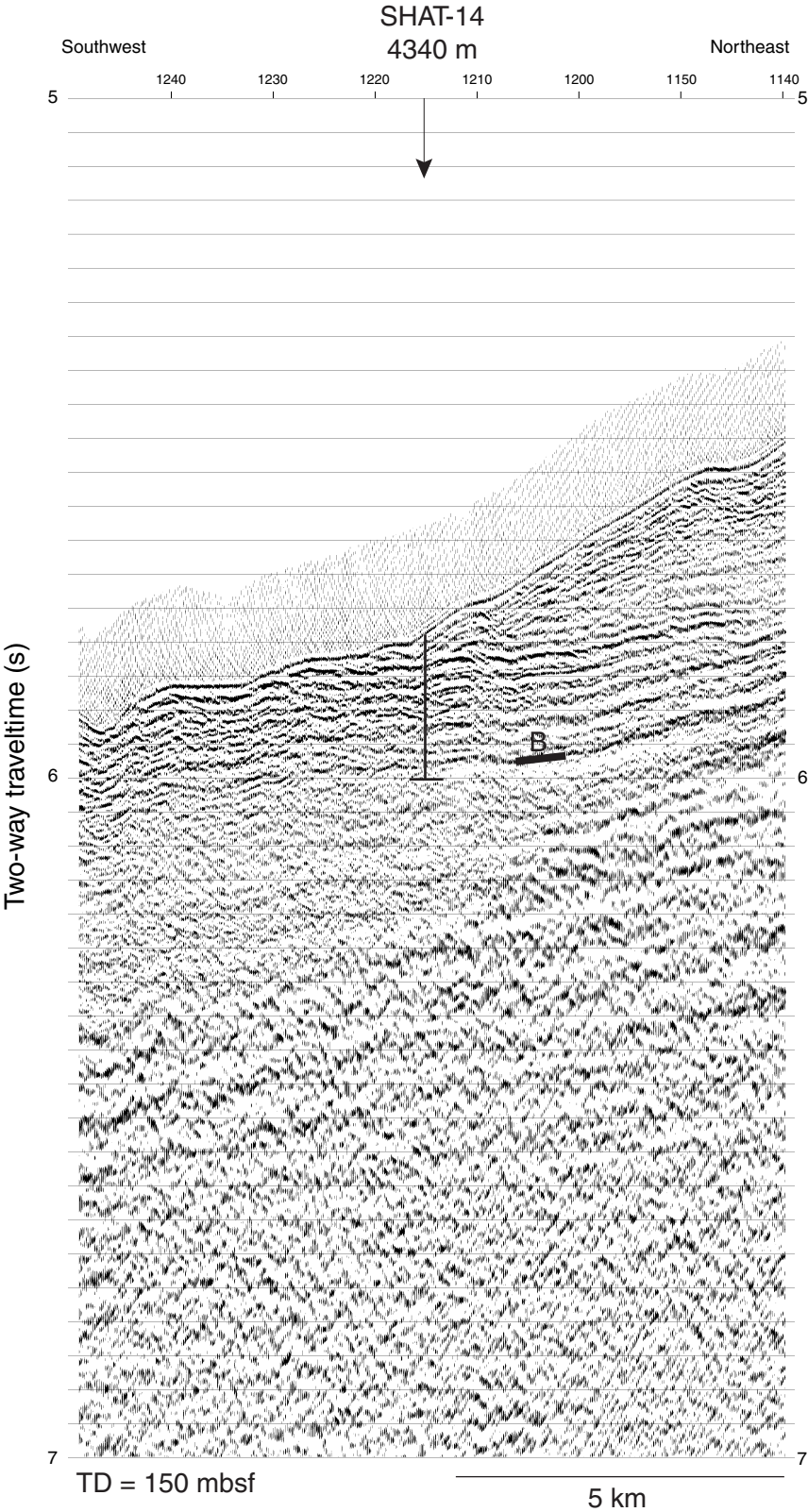
**Objective:** The objective of Site SHAT-14 is to core basement for geochemical analysis and geochronology.

**Drilling Program:** Wash upper 50 m of sediments and then RCB core.

**Logging and Downhole:** None.

**Nature of Rock Anticipated:** Calcareous ooze and basalt.

See SHAT-3 trackline.



## SCIENTIFIC PARTICIPANTS\*

Co-Chief  
Timothy J. Bralower  
Department of Geology  
University of North Carolina at Chapel Hill  
CB# 3315, Mitchell Hall  
Chapel Hill, NC 27599-3315  
USA  
Internet: bralower@email.unc.edu  
Work: (919) 962-0704  
Fax: (919) 966-4519

Co-Chief  
Isabella Premoli-Silva  
Dipartimento di Scienze della Terra  
Università degli Studi di Milano  
Via Mangiagalli 34  
Milano 20133  
Italy  
Internet: Isabella.Premoli@unimi.it  
Work: (39) 02-23698248  
Fax: (39) 02-70638261

Staff Scientist/Inorganic Geochemist  
Mitchell J. Malone  
Ocean Drilling Program  
Texas A&M University  
1000 Discovery Drive  
College Station, TX 77845  
USA  
Internet: malone@odpemail.tamu.edu  
Work: (979) 845-5218  
Fax: (979) 845-0876

Inorganic Geochemist  
Kristen Averyt  
Department of Geological and Environmental  
Sciences  
Stanford University  
#320 Braun Hall  
Stanford, CA 94305  
USA  
Internet: kaveryt@pangea.stanford.edu  
Work: (650) 498-0862  
Fax: (650) 478-0878

Inorganic Geochemist  
Tracy D. Frank  
Department of Earth Sciences  
University of Queensland  
St. Lucia, QLD 4072  
Australia  
Internet: t.frank@mailbox.uq.edu.au  
Work: 07 3365 8379  
Fax: 07 3365 1277

Organic Geochemist  
Simon C. Brassell  
Department of Geological Sciences  
Indiana University, Bloomington  
1001 East 10th Street  
Bloomington, IN 47405-1403  
USA  
Internet: simon@indiana.edu  
Work: (812) 855-3786  
Fax: (812) 855-7961

Paleomagnetist  
Jim Channell  
Department of Geological Sciences  
University of Florida  
241 Williamson Hall  
PO Box 112120  
Gainesville, FL 32611  
USA  
Internet: jetc@ufl.edu  
Work: (352) 392-3658  
Fax: 352 392-9294

Paleomagnetist  
William W. Sager  
Department of Oceanography  
Texas A&M University  
317A Eller Bldg., MS #3146  
College Station, TX 77843-3146  
USA  
Internet: wsager@ocean.tamu.edu  
Work: (979) 845-9828  
Fax: (979) 845-6331

\*Listed participants may change before the leg sails.

Paleontologist (Foraminifer)  
Kunio Kaiho  
Institute of Geology and Paleontology  
Tohoku University  
Faculty of Science  
Aoba, Aramaki, Aoba-ku  
Sendai, Miyagi 980-8578  
Japan  
Internet: kaiho@dges.tohoku.ac.jp  
Work: (81) 22-217-6615  
Fax: (81) 22-217-6634

Paleontologist (Foraminifer)  
R. Mark Leckie  
Department of Geosciences  
University of Massachusetts  
Morrill Science Center  
Amherst, MA 01003-5820  
USA  
Internet: mleckie@geo.umass.edu  
Work: (413) 545-1948  
Fax: (413) 545-1200

Paleontologist (Foraminifer)  
Maria R. Petrizzo  
Dipartimento di Scienze della Terra  
Università degli Studi di Milano  
Via Mangiagalli 34  
Milano 20133  
Italy  
Internet: mrose@e35.gp.terra.unimi.it  
Work: (39) 2-2369 8240  
Fax: (39) 2-7063 8261

Paleontologist (Nannofossil)  
Dr. Paul R. Bown  
University College London  
Department of Geological Sciences  
Gower Street  
London WC1E 6BT  
United Kingdom  
Internet: p.bown@ucl.ac.uk

Paleontologist (Nannofossil)  
Jason Eleson  
Department of Geology  
University of North Carolina  
Chapel Hill, NC 27599  
USA  
Internet: jasoneleson@mailcity.com  
Work: (919) 962-0704  
Fax: (919) 966-4519

Physical Properties Specialist  
Leon J. Clarke  
School of Ocean Sciences  
University of Wales, Bangor  
Askew Street  
Menai Bridge  
Anglesey, Wales LL59 5EY  
United Kingdom  
Internet: l.clarke@bangor.ac.uk  
Work: (44) 1248-382858  
Fax: (44) 1248-716637

Physical Properties Specialist  
Jennifer McGuire  
Department of Geology and Geophysics  
Texas A&M University  
Mail Stop 3115  
College Station, TX 77843-3115  
USA  
Internet: mcguire@tamu.edu  
Work: (979) 845-8482  
Fax: (979) 845-3138

Sedimentologist  
Michael A. Arthur  
Department of Geosciences  
Pennsylvania State University  
503 Deike Bldg.  
University Park, PA 16875  
USA  
Internet: arthur@geosc.psu.edu  
Work: (814) 863-6054  
Fax: (814) 863-7823



Sedimentologist  
Susanne Gylesjö  
Department of Geology and Geochemistry  
Stockholm University  
S-106 91 Stockholm  
Sweden  
Internet: susanne.gylesjo@geo.su.se  
Work: (46) 8 16 47 23

Sedimentologist  
Haidi Hancock  
Department of Earth Sciences  
James Cook University of North Queensland  
Townsville, Queensland 4811  
Australia  
Internet: haidi.hancock@jcu.edu.au  
Work: (61) 7 47 81 4079  
Fax: (61) 7 47 25 1501

Sedimentologist  
Harumasa Kano  
Institute of Geology and Paleontology  
Tohoku University  
Aoba, Aramaki, Aoba-ku  
Sendai, Miyagi 980-8587  
Japan  
Internet: harumasa@mail.cc.tohoku.ac.jp  
Work: (81) 22-217-6625

Sedimentologist  
Thomas K. Pletsch  
Geologisches Institut  
Universität Köln  
Zuelpicher Str. 49a  
Koeln 50674  
Germany  
Internet: thomas.pletch@uni-koeln.de  
Work: (49) 221-470-6694  
Fax: (49) 221-470-5149

Sedimentologist  
Deborah Thomas  
Department of Geology  
University of North Carolina at Chapel Hill  
CB#3315, Mitchell Hall  
Chapel Hill, NC 27599-3315  
USA  
Internet: dthomas1@email.unc.edu  
Work: (919) 225-7463  
Fax: (919) 966-4516

Sedimentologist  
James C. Zachos  
Earth Sciences Department  
University of California, Santa Cruz  
Earth and Marine Sciences Building  
Santa Cruz, CA 95064  
USA  
Internet : jzachos@emerald.ucsc.edu  
Work: (831) 459-4644  
Fax: (831) 459-3074

Stratigrapher  
Ursula Röhl  
Fachbereich Geowissenschaften  
Universität Bremen  
Postfach 33 04 40  
Bremen 28334  
Germany  
Internet: uroehl@allgeo.uni-bremen.de  
Work: (49) 421-218-2482  
Fax: (49) 421-218-3116

LDEO Logging Staff Scientist  
Trevor Williams  
Lamont-Doherty Earth Observatory  
Columbia University  
Borehole Research Group  
Route 9W  
Palisades, NY 10964  
USA  
Internet: trevor@ldeo.columbia.edu  
Work: (914) 365-8626  
Fax: (914) 365-3182

LDEO Logging Trainee  
K.T. Moe  
Ocean Research Institute  
University of Tokyo  
1-15-1 Minimidai, Nakano-ku  
Tokyo 164  
Japan  
Internet: moe@ori.u-tokyo.ac.jp  
Fax: (81) 3-5351-6438

Operations Manager  
Michael A. Storms  
Ocean Drilling Program  
Texas A&M University  
1000 Discovery Drive  
College Station, TX 77845-9547  
USA  
Internet: storms@odpemail.tamu.edu  
Work: (979) 845-2101  
Fax: (979) 845-2308

Laboratory Officer  
Roy Davis  
Ocean Drilling Program  
Texas A&M University  
1000 Discovery Drive  
College Station, TX 77845-9547  
USA  
Internet: davis@odpemail.tamu.edu  
Work: (979) 845-2367  
Fax: (979) 845-0876

Marine Lab Specialist: Yeoperson  
Lisa K. Crowder  
Ocean Drilling Program  
Texas A&M University  
1000 Discovery Drive  
College Station, TX 77845  
USA  
Internet: crowder@odpemail.tamu.edu

Marine Lab Specialist: Chemistry  
Tim Bronk  
Ocean Drilling Program  
Texas A&M University  
1000 Discovery Drive  
College Station, TX 77845-9547  
USA  
Internet: bronk@odpemail.tamu.edu  
Work: (979) 845-9186  
Fax: (979) 845-0876

Marine Lab Specialist: Chemistry  
Anne Pimmel  
Ocean Drilling Program  
Texas A&M University  
1000 Discovery Drive  
College Station, TX 77845-9547  
USA  
Internet: pimmel@odpemail.tamu.edu  
Work: (979) 845-3602  
Fax: (979) 845-0876

Marine Lab Specialist: Downhole Tools,  
Thin Sections  
Sandy Dillard  
Ocean Drilling Program  
Texas A&M University  
1000 Discovery Drive  
College Station, TX 77845-9547  
USA  
Internet: dillard@odpemail.tamu.edu  
Work: (979) 845-2481  
Fax: (979) 845-0876

Marine Lab Specialist: Paleomagnetism  
Mads Radsted  
Ocean Drilling Program  
Texas A&M University  
1000 Discovery Drive  
College Station, TX 77845  
USA  
Internet: radsted@odpemail.tamu.edu  
Work: (979) 845-3602  
Fax: (979) 845-0876

Marine Lab Specialist: Photographer  
Shannon Center  
Ocean Drilling Program  
Texas A&M University  
1000 Discovery Drive  
College Station, TX 77845  
USA  
Internet: center@odpemail.tamu.edu  
Work: (979) 845-1183  
Fax: (979) 845-0876

Marine Lab Specialist: Physical Properties

Tyler Baird  
Ocean Drilling Program  
Texas A&M University  
1000 Discovery Drive  
College Station, TX 77845  
USA

Internet: baird@odpemail.tamu.edu  
Work: (979) 845-3602  
Fax: (979) 845-0876

ODP/TAMU Programmer

David Fackler  
Ocean Drilling Program  
Texas A&M University  
1000 Discovery Drive  
College Station, TX 77845-9547  
USA

Internet: fackler@odpemail.tamu.edu  
Work: (979) 845-1918  
Fax: (979) 845-4857

Marine Lab Specialist: Underway Geophysics

Johanna M. Suhonen  
Ocean Drilling Program  
Texas A&M University  
1000 Discovery Drive  
College Station, TX 77845-9547  
USA

Internet: suhonen@odpemail.tamu.edu  
Work: (979) 845-9186  
Fax: (979) 845-0876

Marine Electronics Specialist

Pieter Pretorius  
Ocean Drilling Program  
Texas A&M University  
1000 Discovery Drive  
College Station, TX 77845-9547  
USA

Internet: pretorius@odpemail.tamu.edu  
Work: (979) 845-3602  
Fax: (979) 845-0876

Marine Computer Specialist

David Morley  
Ocean Drilling Program  
Texas A&M University  
1000 Discovery Drive  
College Station, TX 77845  
USA

Internet: morley@odpemail.tamu.edu  
Work: (979) 862-4847  
Fax: (979) 845-4857