

Site: PAT-23A

Priority: Alternate

Position: 7°41.638'N, 135°32.696'W

Water Depth: 4699 m (uncorrected)

Sediment Thickness: 340 m (0.400 s TWTT)

Target Drilling Depth: 340 m

Approved Maximum Penetration: 450 m

Seismic Coverage: EW9709 PAT-23 survey

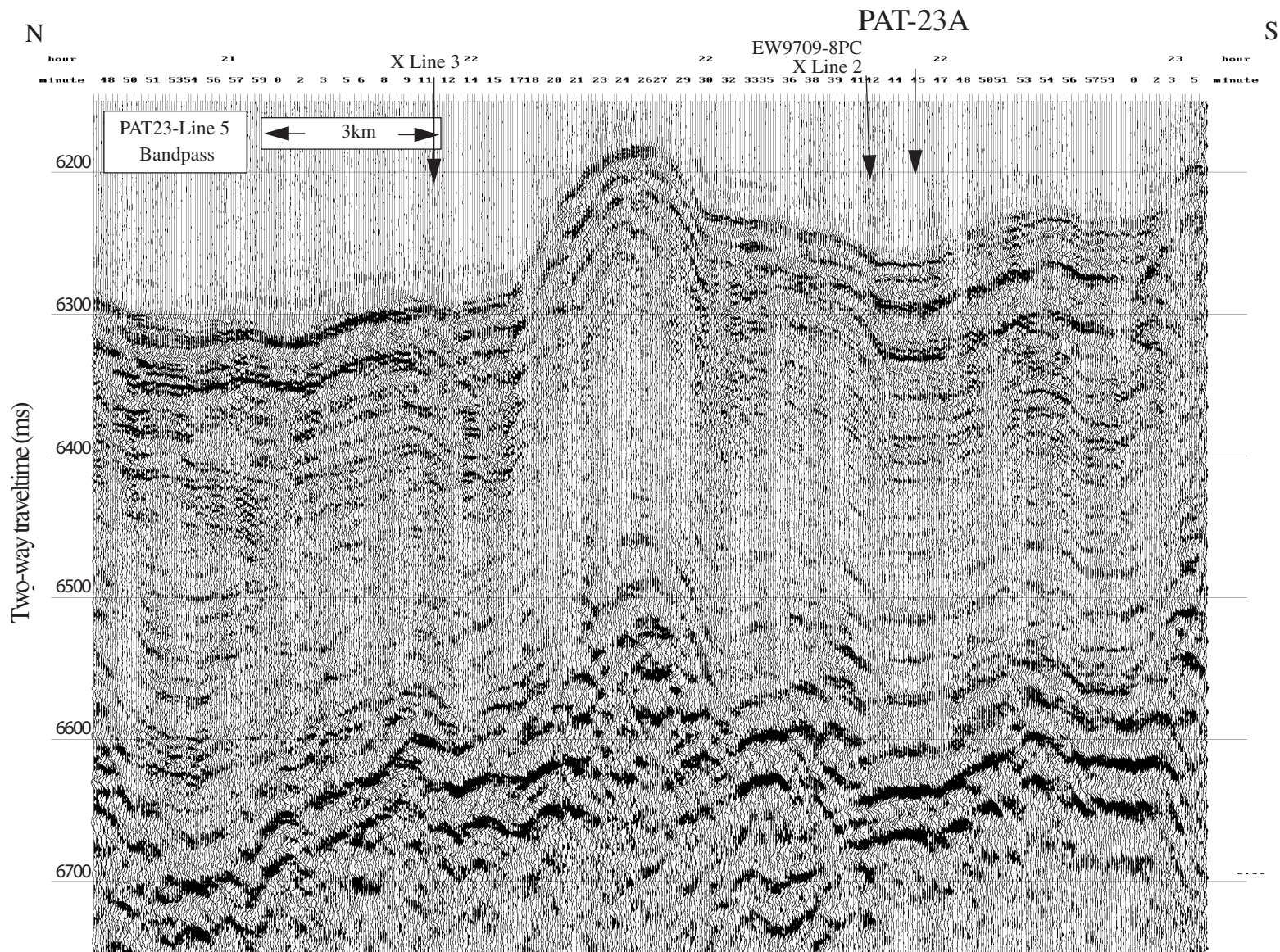
Objectives: The objectives of PAT-23A are to determine:

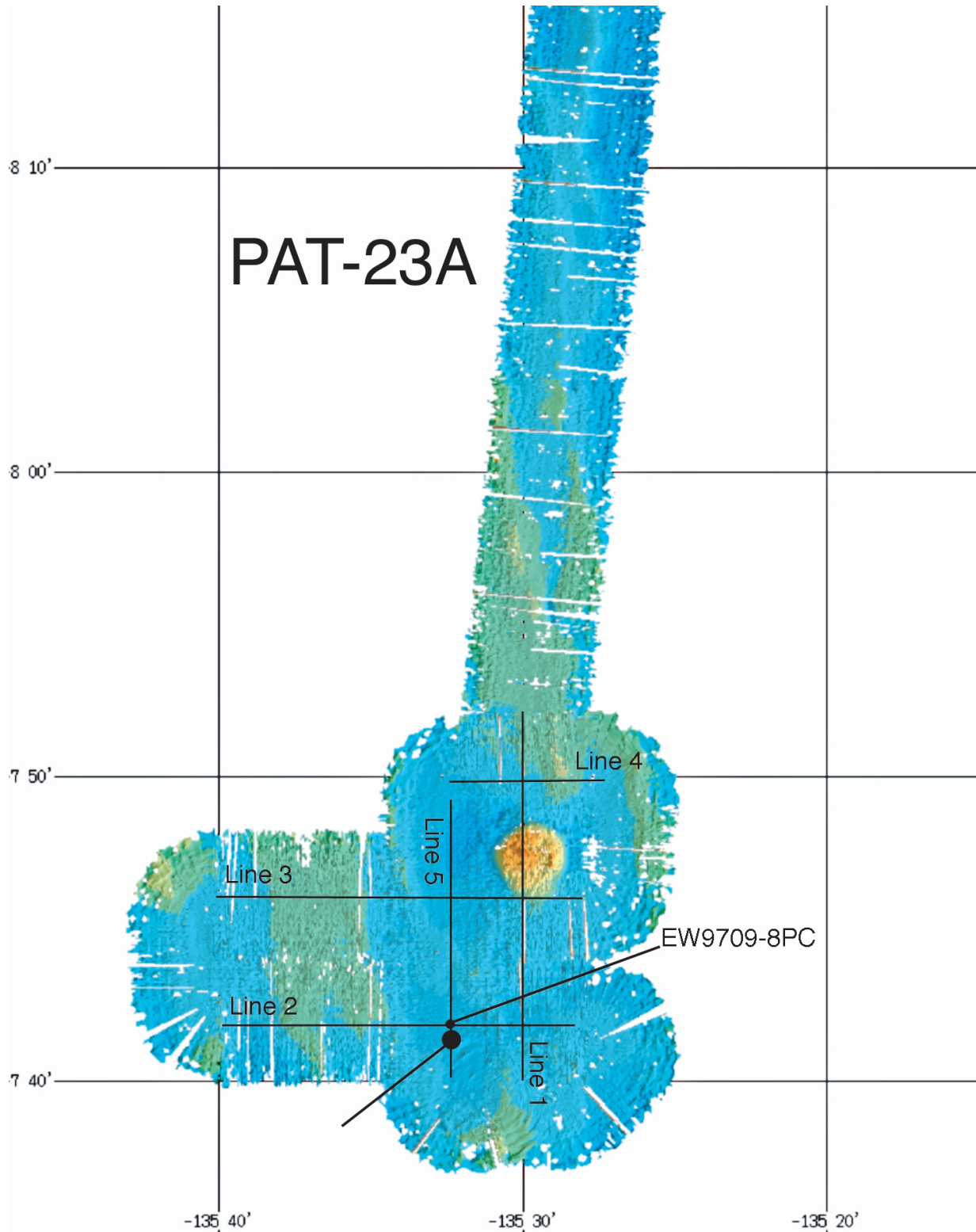
1. Determine the nature of sediments deposited at the late Eocene equator
2. Determine the paleolatitude of the drill site
3. Determine the rate of accumulation and types of biogenic sediments
4. Collect an Eocene/Oligocene boundary section above the CCD

Drilling Program: One APC/XCB to basement; if time is available, second and third APC/XCB.

Logging and Downhole: Triple combo, MGT, and FMS-sonic if time is available. WSTP check shots if time available.

Nature of Rock Anticipated: Soft sediments except perhaps some chert-chalk in basal layers. Basement is midocean ridge basalt.





Site: PAT-26A

Priority: 1

Position: 21°27.242'N, 139°28.710'W

Water Depth: 5081 m (uncorrected)

Sediment Thickness: 201 m (0.254 s TWTT)

Target Drilling Depth: 201 m

Approved Maximum Penetration: 300 m

Seismic Coverage: EW9709 transit 14-13 CDP 3295

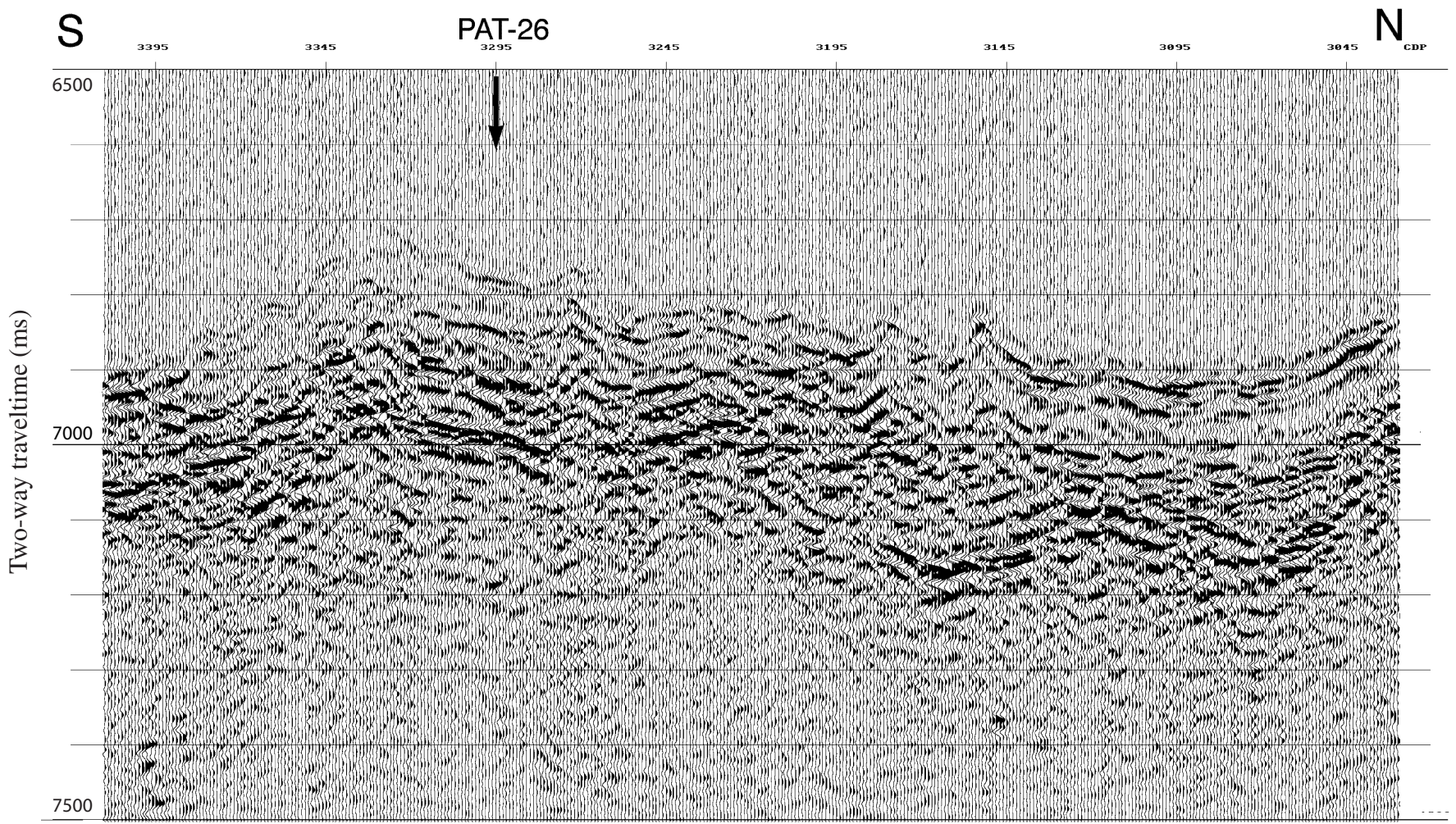
Objectives: The objectives of Site PAT-26 are to determine the:

1. Determine the nature of sediments at the position of thickest lower Eocene sediment pile
2. Determine the paleolatitude of the drill site
3. Determine the rate of accumulation and types of biogenic sediments
4. Collect an LPTM section

Drilling Program: One APC/XCB to basement; one APC through the LPTM; and a second APC/XCB if time is available.

Logging and Downhole: Triple combo, MGT, and FMS-sonic.

Nature of Rock Anticipated: Soft sediments except perhaps some chert-chalk in basal layers. Basement is midocean ridge basalt.



LEG 199 SCIENTIFIC PARTICIPANTS

Co-Chief
Mitchell W. Lyle
Department of Geoscience
Boise State University
1910 University Drive
Boise, ID 83725-1536
USA
Internet: mlyle@cgiss.boisestate.edu
Work: (208) 426-1167
Fax: (208) 385-4061

Co-Chief
Paul A. Wilson
Southampton Oceanography Centre
University of Southampton
European Way
Southampton SO14 3ZH
United Kingdom
Internet: paw1000@esc.cam.ac.uk
Work: (44) 23-8059-2011
Fax: (44) 23-8059-3052

Staff Scientist
Carlota Escutia
Ocean Drilling Program
Texas A&M University
1000 Discovery Drive
College Station, TX 77845-9547
USA
Internet: escutia@odpemail.tamu.edu
Work: (979) 845-0506
Fax: (979) 845-0876

Inorganic Geochemist
Caroline Lear
Institute of Marine and Coastal Sciences
Rutgers, The State University of New Jersey
71 Dudley Road
New Brunswick, NJ 08901
USA
Internet: lear@imcs.rutgers.edu
Work: (732) 932-6555, ext 255
Fax:

Inorganic Geochemist
Lacie Quintin
Department of Earth Sciences
Boston University
685 Commonwealth Avenue
Boston, MA 02215
USA
Internet: quintin@bu.edu
Work: (617) 353-4085
Fax: (617) 353-3290

Paleomagnetist
Josep M. Parés
Department of Geological Sciences
University of Michigan
2534 C.C. Little Building
Ann Arbor, MI 48109-1063
USA
Internet: jmpares@umich.edu
Work: (734) 615-0472
Fax: (734) 763-4690

Paleontologist (Foraminifer)
Helen K. Coxall
School of Ocean and Earth Sciences
University of Southampton
Southampton Oceanography Centre
European Way, Southampton SO14 3ZH
United Kingdom
Internet: h.k.coxall@bris.ac.uk
Work: (44) 23-8059-6449
Fax: (44) 23-8059-3059

Paleontologist (Foraminifer)
Ritsuo Nomura
Foraminiferal Laboratory
Shimane University
Faculty of Education
1060 Nishi-kawatsucho
Matsue 690-8504
Japan
Internet: nomura@edu.shimane-u.ac.jp
Work: (81) 852-32-6309
Fax: (81) 852-32-6259

Paleontologist (Foraminifer)
Richard D. Norris
Department of Geology and Geophysics
Woods Hole Oceanographic Institution

MA-23
Woods Hole, MA 02543-1541
USA
Internet: rnorris@whoi.edu
Work: (508) 289-2839
Fax: (508) 457-2187

Paleontologist (Nannofossil)
Jan Backman
Department of Geology and Geochemistry
Stockholm Universitet
Stockholm 106 91
Sweden
Internet: backman@geo.su.se
Work: (46) 8-164720
Fax: (46) 8-6747861

Paleontologist (Nannofossil)
Isabella Raffi
Dipartimento di Scienze della Terra
Universitario "G. D'Annunzio"
Campus Universitario
via dei Vestini 31
Chieti Scalo 66013
Italy
Internet: raffi@unich.it
Work: (39) 871-355-6421
Fax: (39) 871-355-6454

Paleontologist (Radiolaria)
Catherine A. Nigrini
Center for Great Lakes and Aquatic Sciences
University of Michigan
2200 Bonisteel Blvd.
Ann Arbor, MI 48109-2099
USA
Internet: catherine@nigrini.net
Work: (403) 678-5552
Fax: n/a

Physical Properties Specialist
William H. Busch
Department of Geology and Geophysics
University of New Orleans
2000 Lakeshore Drive
New Orleans, LA 70148
USA

Leg 199
Scientific Prospectus
Page 82

Internet: wbusch@uno.edu
Work: (504) 280-6793
Fax: (504) 280-7396

Physical Properties Specialist
Michael D. Vanden Berg
Department of Geology and Geophysics
University of Utah
135 South 1460 East, Rm. 719
Salt Lake City, UT 84112
USA
Internet: mvandenberg@mines.utah.edu
Work: (801) 585-5328
Fax: (801) 581-7065

Sedimentologist
Steven A. Hovan
Department of Geoscience
Indiana University of Pennsylvania
114 Walsh Hall
Indiana, PA 15705-1087
USA
Internet: hovan@iup.edu
Work: (724) 357-7662
Fax: (724) 357-5700

Sedimentologist
Silke Kruse
Institut für Mineralogie
Ruhr Universität Bochum
Universitätsstrasse 150
Bochum, Nordrhein-Westfalen 44801
Germany
Internet: silke.kruse@ruhr-uni-bochum.de
Work: (49) 324-32-24939
Fax: (49) 234-32-14572

Sedimentologist
David K. Rea
Department of Geological Sciences
University of Michigan
425 E. University Ave.
Ann Arbor, MI 48109-1063
USA
Internet: davidrea@umich.edu
Work: (734) 936-0521
Fax: (734) 763-4690

Sedimentologist
Torsten H. Steiger
Institut für Paläontologie und Historische Geologie
Ludwig-Maximilians-Universität München
Richard-Wagner-Straße 10
München 80333
Federal Republic of Germany
Internet: 100425.1104@compuserve.com
Work: (49) 8144-8259
Fax: (49) 8144-997275

Sedimentologist
Aradhna Tripathi
Earth Sciences Department
University of California, Santa Cruz
1156 High Street
Santa Cruz, CA 95064
USA
Email: ripple@es.ucsc.edu
Work: (831) 459-5088
Fax: (831) 459-3074

Sedimentologist
Bridget Wade
Department of Geology and Geophysics
University of Edinburgh
Grant Institute
West Mains Road
Edinburgh EH9 3JW
United Kingdom
Internet: bwade@glg.ed.ac.uk
Work: (44) 131-650-5917
Fax: (44) 131-668-3184

Stratigraphic Correlator
Thomas R. Janecek
Antarctic Research Facility
Florida State University
108 Carraway Building
Tallahassee, FL 32306-4100
USA
Internet: janecek@gly.fsu.edu
Work: (850) 644-2407
Fax: (850) 644-4214

Stratigraphic Correlator
Theodore C. Moore
Department of Geological Sciences
University of Michigan

Leg 199
Scientific Prospectus
Page 84

C.C. Little Bldg.
425 E. University
Ann Arbor, MI 48109-1063
USA
Internet: tedmoore@umich.edu
Work: (734) 763-0202
Fax: (734) 763-4690

Stratigraphic Correlator
Heiko Paelike
Department of Earth Sciences
University of Cambridge
Downing Street
Cambridge CB2 3EQ
United Kingdom
Internet: hpal98@esc.cam.ac.uk
Work: (44) 1223 334877
Fax: (44) 1223 334871

LDEO Logging Staff Scientist
Philippe Gaillot
Universite Montpellier II
Laboratoire de Mesures en Forages
ISTEEM cc 049
Place Eugene Bataillon
Montpellier Cedex 5
34095
France
Internet: gaillot@dstu.univ-montp2.fr
Work: (33) 467 149 310
Fax: (33) 467 149 308

Operations Manager
Ron Grout
Ocean Drilling Program
Texas A&M University
1000 Discovery Drive
College Station, TX 77845-9547
USA
Internet: grout@odpemail.tamu.edu
Work: (979) 845-2144
Fax: (979) 845-2308

Laboratory Officer
Burney Hamlin
Ocean Drilling Program
Texas A&M University
1000 Discovery Drive
College Station, TX 77845-9547

USA
Internet: hamlin@odpemail.tamu.edu
Work: (979) 845-2496
Fax: (979) 845-0876

Marine Lab Specialist: Yeoperson
Michiko Hitchcox
Ocean Drilling Program
Texas A&M University
1000 Discovery Drive
College Station, TX 77845-9547
USA
Internet: hitchcox@odpemail.tamu.edu
Work: (979) 845-2483
Fax: (979) 845-0876

Marine Lab Specialist: Chemistry
Dennis Graham
Ocean Drilling Program
Texas A&M University
1000 Discovery Drive
College Station, TX 77845-9547
USA
Internet: graham@odpemail.tamu.edu
Work: (979) 845-8482
Fax: (979) 845-0876

Marine Lab Specialist: Chemistry
Chieh Peng
Ocean Drilling Program
Texas A&M University
1000 Discovery Drive
College Station, TX 77845-9547
USA
Internet: peng@odpemail.tamu.edu
Work: (979) 845-2480
Fax: (979) 845-0876

Marine Lab Specialist: Core
Maniko Kamei
Ocean Drilling Program
Texas A&M University
1000 Discovery Drive
College Station, TX 77845-9547
USA
Internet: kamei@odpemail.tamu.edu
Work: (979) 458-1865
Fax: (979) 845-0876

Marine Lab Specialist: Curator

Jessica Huckemeyer
Ocean Drilling Program
Texas A&M University
1000 Discovery Drive
College Station, TX 77845
USA
Internet: huckemeyer@odpemail.tamu.edu
Work: (979) 845-4822
Fax: (979) 845-1303

Marine Lab Specialist: Downhole Tools, Thin Sections

Gus Gustafson
Ocean Drilling Program
Texas A&M University
1000 Discovery Drive
College Station, TX 77845-9547
USA
Internet: gustafson@odpemail.tamu.edu
Work: (979) 845-8482
Fax: (979) 845-0876

Marine Lab Specialist: Paleomagnetism

Charles A. Endris
Ocean Drilling Program
Texas A&M University
1000 Discovery Drive
College Station, TX 77845
USA
Internet: endris@odpemail.tamu.edu
Work: (979) 845-5135
Fax: (979) 845-0876

Marine Lab Specialist: Photographer

Cyndi J. Prince
Ocean Drilling Program
Texas A&M University
1000 Discovery Drive
College Station, TX 77845
USA
Internet: prince@odpemail.tamu.edu
Work: (979) 845-2483
Fax: (979) 845-0876

Marine Lab Specialist: Physical Properties

Anastasia Ledwon
Ocean Drilling Program
Texas A&M University
1000 Discovery Drive

College Station, TX 77845-9547
USA
Internet: ledwon@odpemail.tamu.edu
Work: (979) 845-9186
Fax: (979) 845-0876

Marine Lab Specialist: Underway Geophysics
Paula Weiss
Ocean Drilling Program
Texas A&M University
1000 Discovery Drive
College Station, TX 77845
USA
Internet: weiss@odpemail.tamu.edu
Work: (979) 845-3602
Fax: (979) 845-0876

Marine Lab Specialist: X-Ray
Robert Olivas
Ocean Drilling Program
Texas A&M University
1000 Discovery Drive
College Station, TX 77845-9547
USA
Internet: olivas@odpemail.tamu.edu
Work: (979) 845-2481
Fax: (979) 845-0876

Marine Electronics Specialist
Randy W. Gjesvold
Ocean Drilling Program
Texas A&M University
1000 Discovery Drive
College Station , TX 77845-9547
USA
Internet: gjesvold@odpemail.tamu.edu
Work: (979) 845-8482
Fax: (979) 845-0876

Marine Computer Specialist
John Davis
Ocean Drilling Program
Texas A&M University
1000 Discovery Drive
College Station, TX 77845
USA
Internet: jdavis@odpemail.tamu.edu
Work: (979) 862-4849
Fax: (979) 458-1617

Leg 199
Scientific Prospectus
Page 88

Marine Computer Specialist
Steve Tran
Ocean Drilling Program
Texas A&M University
1000 Discovery Drive
College Station, TX 77845
USA
Internet: tran@odpemail.tamu.edu
Work: (979) 845-3036
Fax: (979) 458-1617