

OCEAN DRILLING PROGRAM

CRYOEDIT

USER'S MANUAL

Table of Contents

Document Layout	1
About This Document	1
Starting the program	2
Windows NT	2
Windows 3.x	2
Login	2
User and Password	2
Host	3
Buttons and Navigation	3
Error Messages	3
The Browser Window	4
Data Selection	4
Data Spreadsheet	5
Obtaining Help	5
Exiting the Application	6
Uploading Data	7
Upload Path	7
Selecting Files for Upload	8
Starting an Upload	8
Interrupting an Upload	9
Verifying the Upload	9
Editing Data	12
Delete Section	12
Delete Run	12
Delete Sample	12
Reassign Run	13

Table of Figures

Figure 1. CryoEdit icon	2
Figure 2. CryoEdit login window.	2
Figure 3. Login error message.	3
Figure 4. The CryoEdit browser window.	4
Figure 5. On-Line help for the browser window.	6
Figure 6. Upload raw data files from this window.	7
Figure 7. Select the source directory where files for upload are saved.	8
Figure 8. The upload status window.	9
Figure 9. Completed upload status.	10
Figure 10. Status summary box.	10
Figure 11. Warning box before a section is deleted.	12
Figure 12. Warning box before a run is deleted.	12
Figure 13. Warning box before a sample is deleted.	13
Figure 14. Reassign a run to the correct section here.	13

Introduction

CryoEdit is a program designed to support the acquisition of data in the paleomagnetism laboratory. CryoEdit uploads cryomagnetometer data from the Long Core utility to the central database. It also provides limited facilities for browsing and editing the uploaded data.

Document Layout

This document is broken into several sections. The first three describe how to start and login to the program, and the layout of the main browser window. The fourth section describes how to upload the data, and the last section give brief editing information.

About This Document

For instructions on installing and configuring this program, see the document *CryoEdit: Installation Guide & Architectural Notes* (filename: technote.doc, referenced below as the *Installation Guide*).

Please direct any comments, questions, incident reports and constructive criticism regarding this document and application to the ODP Applications Development group via the HelpDesk, or via the Marine Computer Specialists (MCS) and Lab Technicians.

Starting the program

Windows NT

Launch *CryoEdit* by double clicking on the desktop shortcut. The icon should look similar to Figure 1 below.

Windows 3.x

Launch *CryoEdit* from the **Program Manager** by double clicking on the item labeled *Cryo-Edit*.



Figure 1. CryoEdit icon

You can also launch *CryoEdit* from the **File Manager** by navigating to the directory `c:\odp\rsc` and double clicking on the program **CryoEdit.EXE**.

Login

Once the CryoEdit program is started, the login window opens (See Figure 2).



Figure 2. CryoEdit login window.

User and Password

Access to the central database is restricted by a **User** name and **Password**. Consult the *Installation Guide* document for valid user and password logins, or consult the on-duty laboratory or Marine Computer Specialist (MCS).

The next time CryoEdit is started, the program will remember and display the last **User** and **Host** entered in the login window. Check the **Remember Password** box if you also want the password recalled each time the program is started.

Host

Multiple databases are available, on ship and shore, for production, testing and development efforts. These databases are selected via the **Host** choice box as either “Test” or “Production”.

Be sure to select “Production” when logging in for a live run of data uploading and/or editing.

Buttons and Navigation

Once all login information is entered, click on the **Ok** button or the **Enter** key to complete the database login. Be patient, as it takes a few seconds for the system to establish a database connection. If the connection is successful, the main menu (See Figure 4) is opened.

Click on the **Quit** button to immediately exit the *CryoEdit* application without logging in.

Use the **Tab** and **Shift+Tab** keys to navigate through the entry fields. **Tab** moves the cursor forward one field, and **Shift+Tab** moves the cursor back one field.

Error Messages

If the login procedure fails, the message in Figure 3 is displayed.



Figure 3. Login error message.

Click **Ok** to return to the login window. Verify the **User** name and **Password** entered. If the login continues to fail, contact an MCS or the HelpDesk to ensure that the program is installed and configured properly, and that the central database is available.

The Browser Window

Once the login is complete, the following window opens (See Figure 4). This is a browser window, used to view or edit cryomagnetic data already saved to the database.

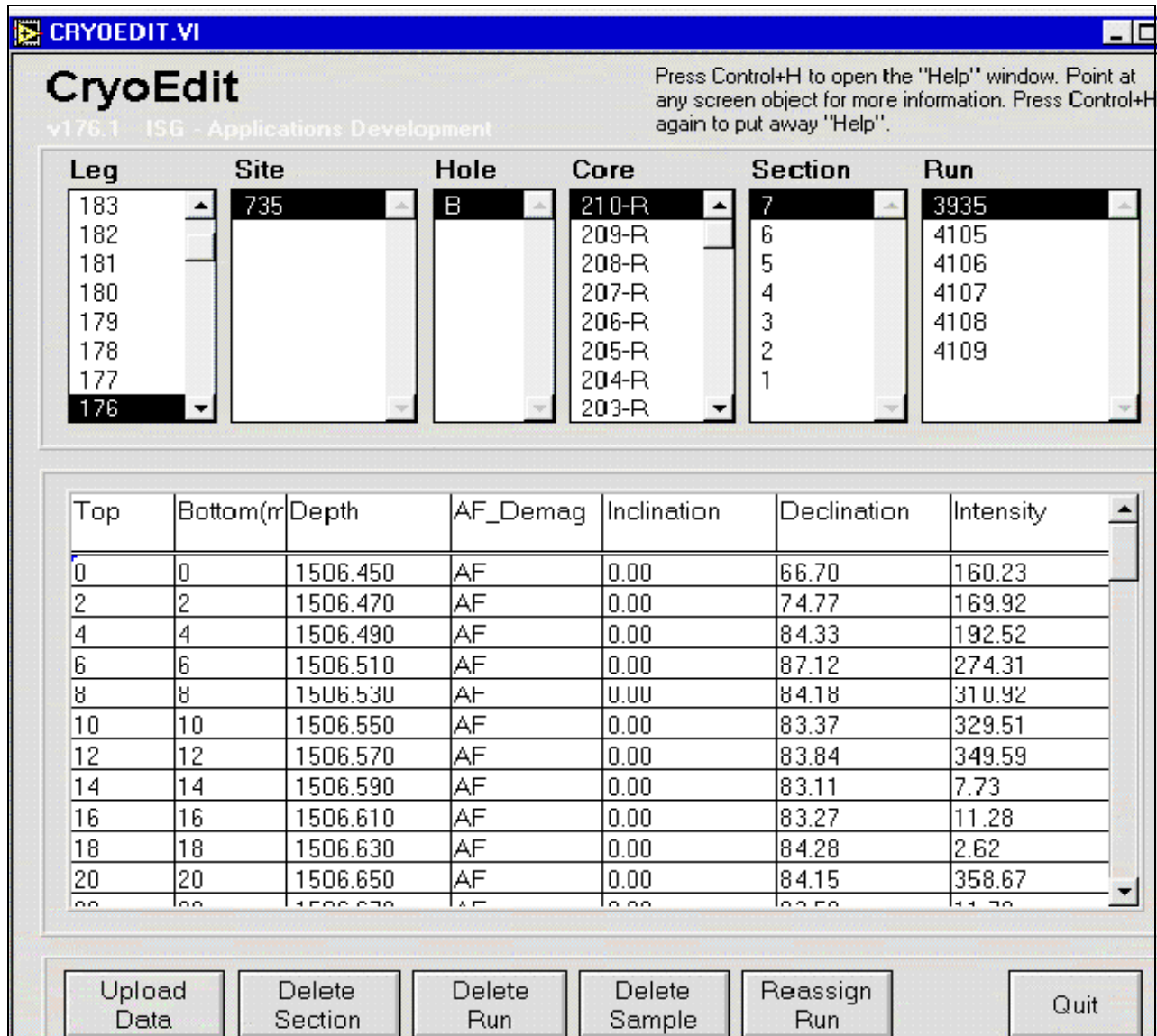


Figure 4. The CryoEdit browser window.

Data Selection

- Notice the columns for leg, site, hole, core, section and run. These columns display information about core that is already stored in the central database. Use these columns to select specific runs of data that you would like to analyze or edit.

Cryomagnetometer data is not available in the database and on this window until it has been uploaded using the “Upload Data” option.

- The site information displayed is dependent on the leg selected, as the hole information displayed is dependent on the site selected, etc.

Because of this, be sure to select the leg first, then site, etc.

- Use the mouse to highlight your selection in each column. Use the scrollbar or the arrow keys to move up or down each column.
- Each run contains a collection of measurements made by the cryomagnetometer. Selecting a run causes the associated measurements to be displayed in the main window’s spreadsheet. If no data exists for a run, the spreadsheet remains empty.

If a run contains many sample points, it may take several seconds for the spreadsheet to load and display all associated data.

- If a selection columns is empty, there is no associated data for that column in the central database (e.g. if the site column is empty, no sites have been drilled yet for the selected leg).
- If a column is missing an expected value, check with the Lab Technicians, Curator, or Database Administrator to ensure that those data have been entered into the database.

Data Spreadsheet

The data spreadsheet displays all measurements taken at one or more sample points for the selected run.

The individual cells on the spreadsheet are **not** editable. However, blocks of rows and columns can be selected for editing by clicking and dragging the mouse. Editing is described in greater detail in the final section (See "Editing Data", p. 12).

Obtaining Help

To obtain a limited form of on-line help, press <Ctrl+H>. This opens a help window, which displays information corresponding to the current CryoEdit window opened (See Figure 5). To close the help window, click <Ctrl+H> again.

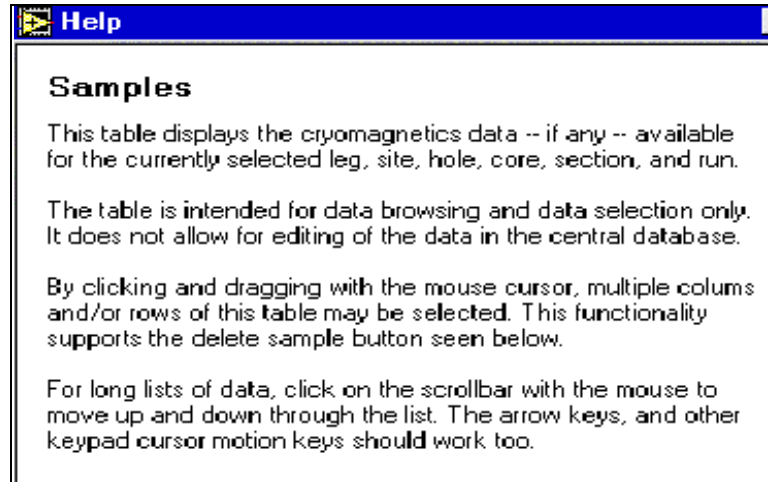


Figure 5. On-Line help for the browser window.

Exiting the Application

To exit the *CryoEdit* application and return to the operating system, click on the **Quit** button in the bottom right hand corner.

Uploading Data

To upload raw cryomagnetic data files, click on the **Upload Data** button found on the browser window. This opens the *CryoEdit* data “Upload” window (See Figure 6).

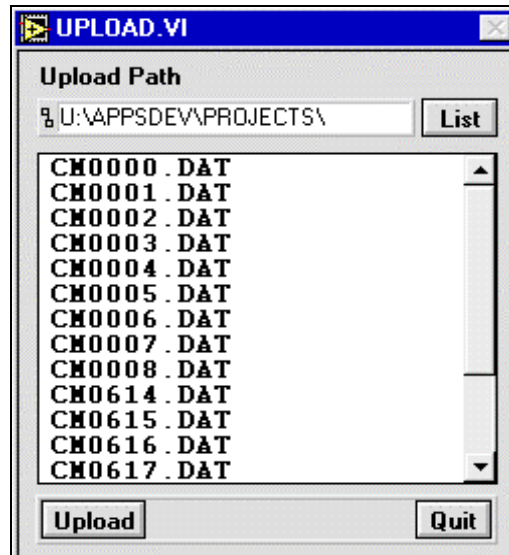


Figure 6. Upload raw data files from this window.

Upload Path

- Before files are uploaded, make sure the correct upload path is entered in the top entry field. The path indicates where the raw cryomag data files will be uploaded from.
- Either enter the path manually, or use the **List** button to open a navigational dialog box (See Figure 7). Use the dialog box to select the files you want to upload. From the dialog box you can only select the directory that contains the files; you cannot select individual files.
- Once at the desired directory, click on the **Select Cur Dir** button. The upload window will reopen with the upload path displayed and all files listed in the window.

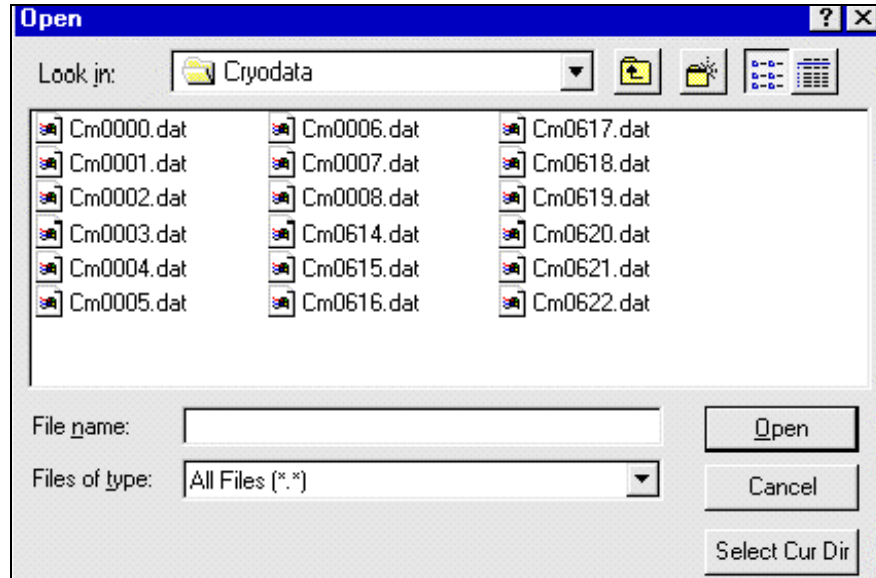


Figure 7. Select the source directory where files for upload are saved.

Selecting Files for Upload

The upload window lists all files saved in the selected directory. To select a file from the list, click on it. To select multiple files, hold down the **Shift** key and click on each file, or hold down **Shift** while dragging the mouse over a block of files.

Starting an Upload

Once all files are selected, click on the **Upload** button. This starts the upload and displays a status window as each file progresses through the upload process (See Figure 8). Any errors found are displayed on this data screen.

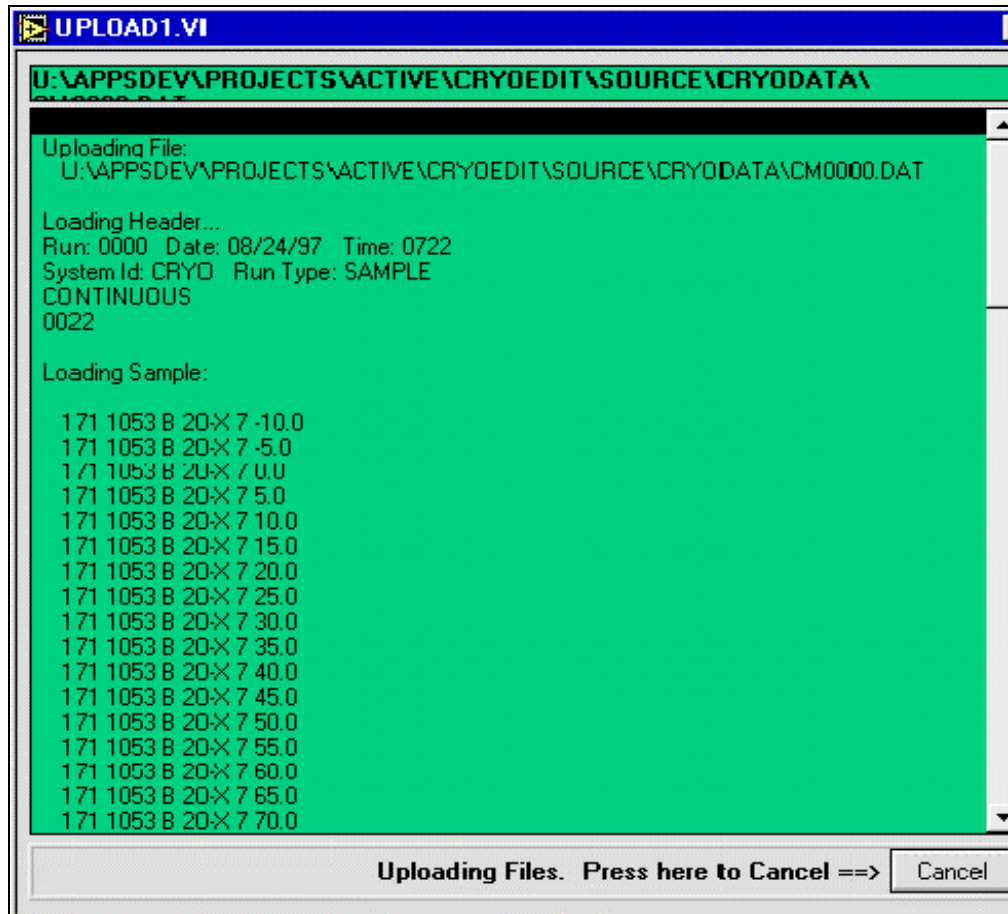


Figure 8. The upload status window.

Interrupting an Upload

To interrupt the upload of a batch of files, click on the **Cancel** button. The process cannot stop in the middle of a file, but first completes the file upload then stops.

Verifying the Upload

Once the upload is complete, the upload status window should look similar to Figure 9 below.

The completed upload is accompanied by a status summary box shown in Figure 10.

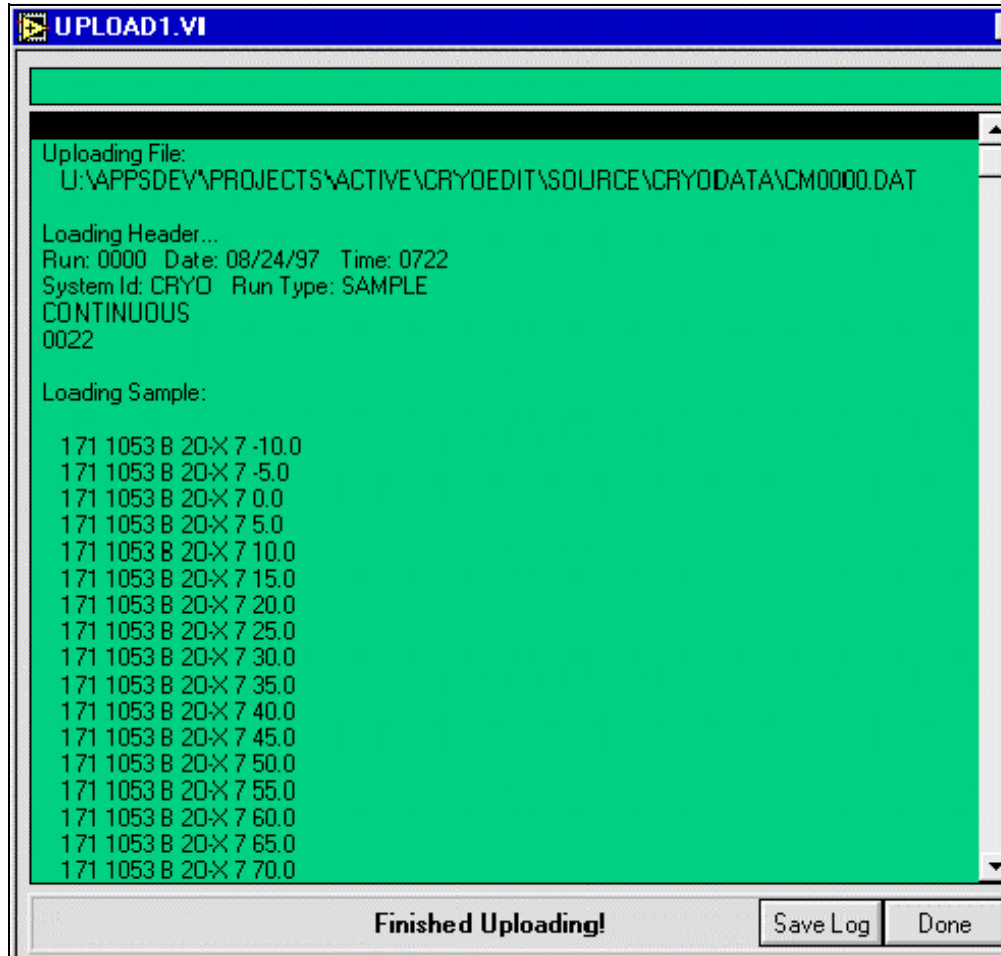


Figure 9. Completed upload status.

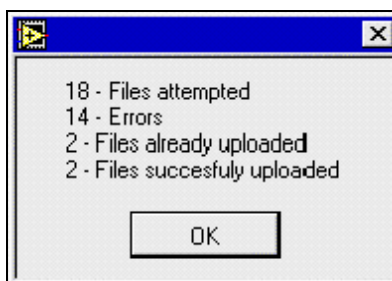


Figure 10. Status summary box.

- To see the entire upload status, use the up and down arrows on the side of the window to scroll through the screen.
- If you uploaded large batches of files, it may be more convenient to use the **Save Log** option to store the status messages for subsequent review using the text editor of your

choice (e.g. Windows NOTEPAD.exe, Wordpad.exe, etc.). Click on this button to open a dialog box. Select a filename and the directory where you want the file saved.

- Standard operating procedures should include reviewing the upload logs in cases where errors have occurred. Below is an example of the content of upload log files.

Uploading File:

P:\DATA\14.PAL\LEG175\JANUS_Q\1075A\CM0000.DAT

Loading Header...

Run: 0000 Date: 08/24/97 Time: 0722

System Id: CRYO Run Type: SAMPLE

CONTINUOUS

0022

Loading Sample:

```

175 1075 A 1-H 1 -10.0
175 1075 A 1-H 1 -5.0
175 1075 A 1-H 1 0.0
175 1075 A 1-H 1 5.0
175 1075 A 1-H 1 10.0
175 1075 A 1-H 1 15.0
175 1075 A 1-H 1 20.0
175 1075 A 1-H 1 25.0
175 1075 A 1-H 1 30.0
175 1075 A 1-H 1 35.0
175 1075 A 1-H 1 40.0
175 1075 A 1-H 1 45.0
175 1075 A 1-H 1 50.0
175 1075 A 1-H 1 55.0
175 1075 A 1-H 1 60.0
175 1075 A 1-H 1 65.0
175 1075 A 1-H 1 70.0
175 1075 A 1-H 1 75.0
175 1075 A 1-H 1 80.0
175 1075 A 1-H 1 85.0
175 1075 A 1-H 1 90.0
175 1075 A 1-H 1 95.0

```

Checking Data...

Saving data to Database...

Error: Oracle error uploading this file ***

Error Code: [2290]

Error Message:

```

Execute SQL - [Oracle][ODBC Oracle Driver][Oracle OCI]ORA-02290: check constraint
(JANUS.PMAG_DEMAG_TYPE_CHK) violated
ORA-06512: at line 44.

```

- To view successfully uploaded data either use the browser screen of the CryoEdit program (See "The Browser Window", p. 4), or use the web browser reports of JanusWeb located on the ODP web site: <http://www-odp.tamu.edu/database>.

Editing Data

There are several editing functions available on the browsing window. These functions are available as buttons along the bottom of the window. Individual cells cannot be edited, but individual sample rows or blocks of samples can be edited.

Delete Section

Use the “Delete Section” option to delete all runs associated with the currently highlighted section. First select the section using the columns at the top of the window, then click on the **Delete Section** button. The following message is displayed as an opportunity to quit the operation before the section is deleted.

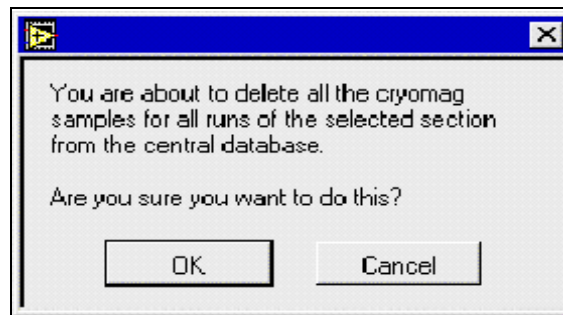


Figure 11. Warning box before a section is deleted.

Delete Run

Use the “Delete Run” option to remove all data associated with the currently highlighted run. First select the run using the column at the top of the window, then click on **Delete Run**.

Because of the large number of files generated by the data acquisition process, it is not always possible to weed out bad or aborted runs before the files are uploaded. This function allows the operator to go in after the fact and delete runs of data known to be incorrect. The following warning is displayed before the run is deleted from the database



Figure 12. Warning box before a run is deleted.

Delete Sample

Use the “Delete Sample” option to remove selected cryomagnetometer point measurements.

First, select the run that contains the data you want to edit. This displays all associated measurement points in the spreadsheet. To select just one row for editing, click on it. To select more than one row, hold down the **Shift** key while clicking on each row, or while dragging the mouse over a block of rows. Finally, click on the **Delete Sample** button.

The following warning is displayed before the sample is deleted from the database.

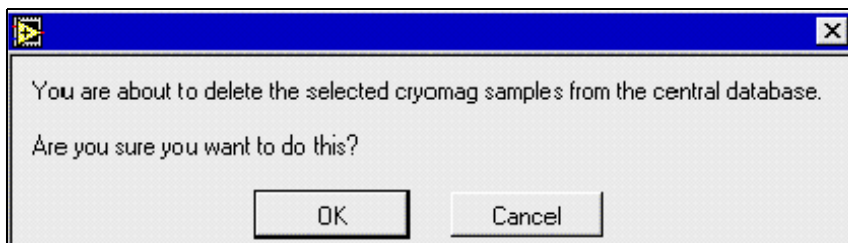


Figure 13. Warning box before a sample is deleted.

Reassign Run

Use the “Reassign Run” option if the section on the track does not match with the section specified in the data acquisition software (i.e. the data run is recorded, but with the wrong section identifier).

First, select the data run with the errant section(s). Click on **Reassign Run**. This displays a screen for selecting the correct section (See Figure 14). Select a new section and click on **Continue**.

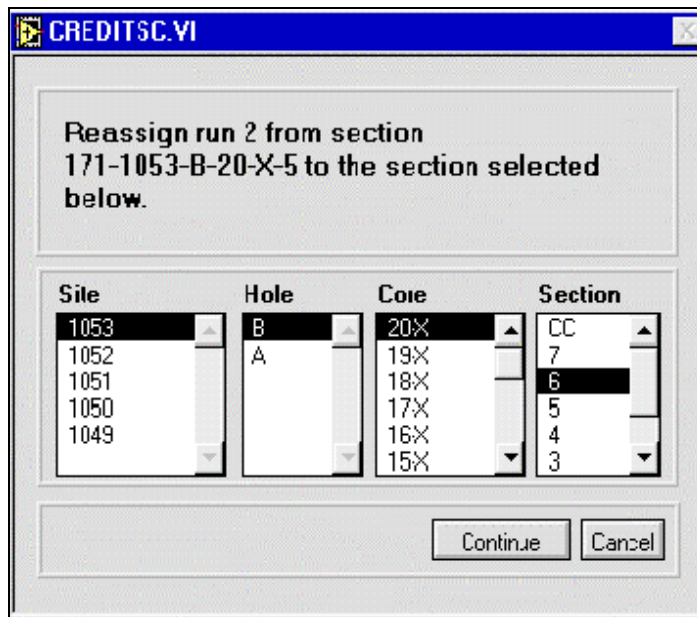


Figure 14. Reassign a run to the correct section here.

Note: You can only reassign runs within the same leg.