

LEG

1  
3  
3

SITE

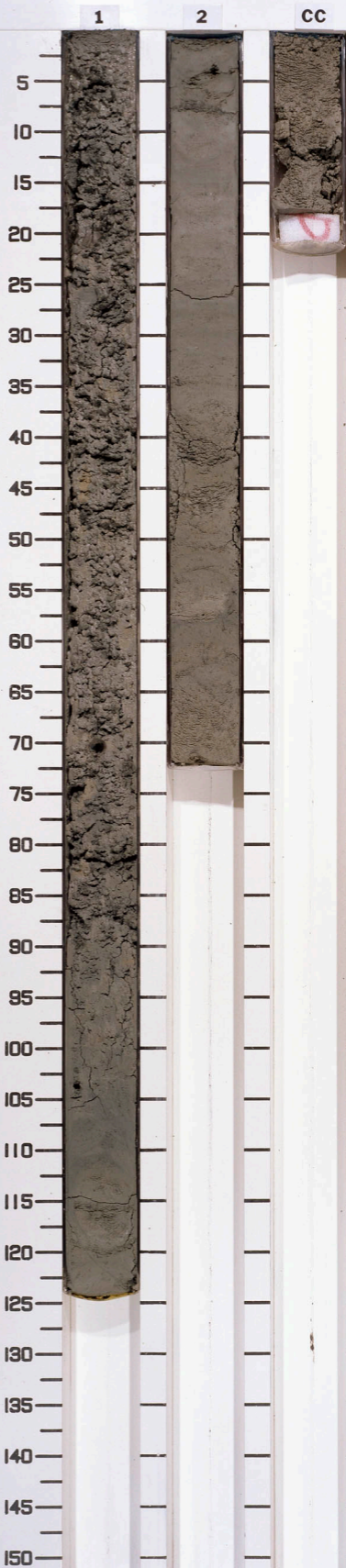
8  
1  
9

HOLE

A

CORE

1  
7  
X



3-5 7-5 10-5 13-5 17-1 23-4 26-1 29-3

LEG

1  
3  
3

SITE

8  
-  
9

HOLE

A

CORE

5  
10  
15  
20  
25  
30  
35  
40  
45  
50  
55  
60  
65  
70  
75  
80  
85  
90  
95  
100  
105  
110  
115  
120  
125  
130  
135  
140  
145  
150



32-4 35-5 43-4

LEG

1  
3  
3

SITE

8  
-  
9

HOLE

A

CORE

5  
10  
15  
20  
25  
30  
35  
40  
45  
50  
55  
60  
65  
70  
75  
80  
85  
90  
95  
100  
105  
110  
115  
120  
125  
130  
135  
140  
145  
150



PHOTOGRAPHED  
25 AUG 92