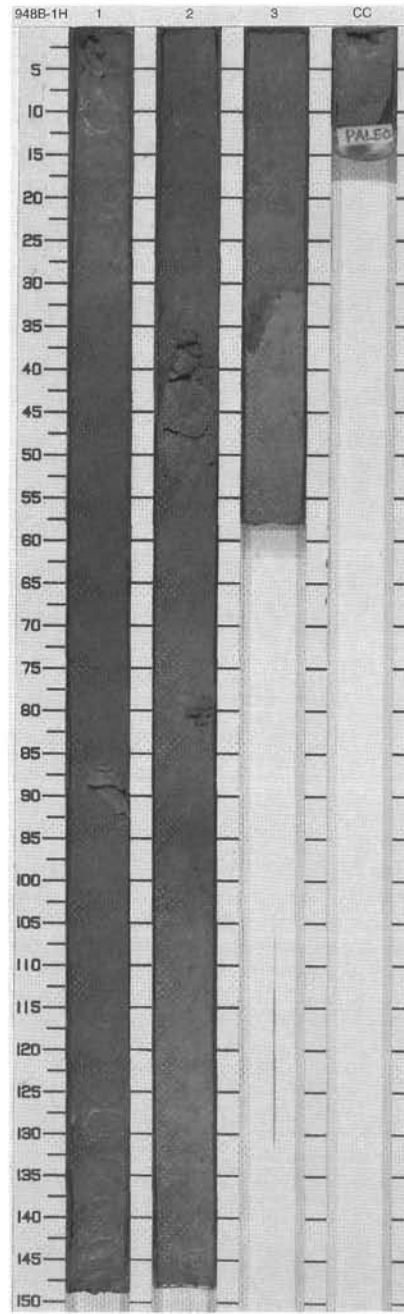


SITE 948 HOLE B CORE 1H

CORED 0.0 - 4.0 mbsf

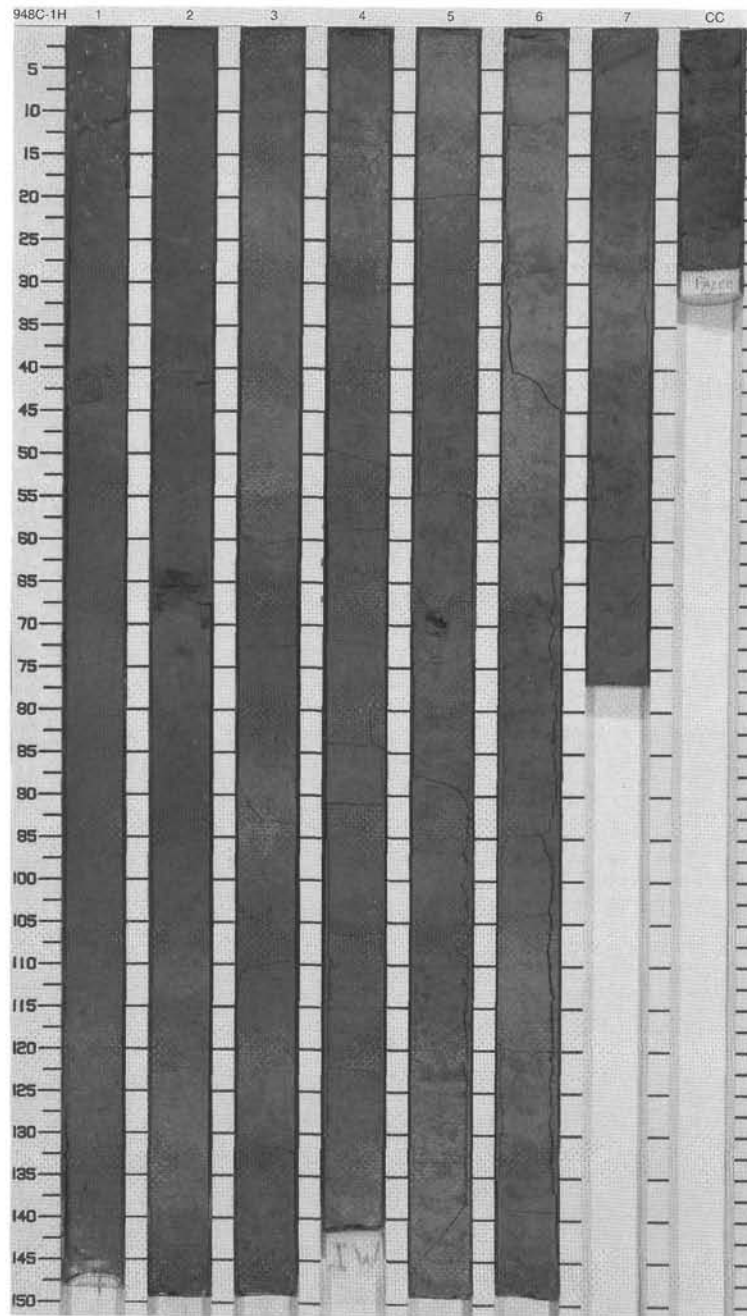
Meter	Graphic Lith.	Section	Age	Structure	Disturb	Sample	Color	Description
1	[Dotted pattern]	1	late Pleistocene	[Wavy lines]	○	P S X	10YR 6/2	<p>CLAY WITH FORAMINIFERS</p> <p>Major Lithology: Moderately bioturbated, light brownish gray (10YR 6/2) clay with foraminifers. Undeformed.</p> <p>Minor Lithology: Disrupted, gray (10YR 6/1) to grayish brown (10YR 5/2) volcanic ash layers in Section 1, 87-92 cm; Section 2, 35-52 and 78-81 cm; and Section 3, 31-38 cm.</p>
2		2				P X		
3		3				P S		
						P X		
						P S X		
						M		



SITE 948 HOLE C CORE 1H CORED 0.0 - 9.5 mbsf

Meter	Graphic Lith.	Section	Age	Structure	Disturb	Sample	Color	Description
0.0						P C		<p>CLAY WITH NANNOFOSSILS AND FORAMINIFERS</p> <p><i>Major Lithology:</i> Slightly to moderately bioturbated, mottled, light brownish gray (9YR 6/2 to 10YR 6/2 to 10YR 7/2) clay with nannofossils and foraminifers. Undeformed. Disseminated ash and dark ashy patches throughout. Intervals of increased foraminifer concentration in Section 1, 66-81 and 110-117 cm and Section 3, 37-54 cm.</p> <p><i>Minor Lithology:</i> Disrupted, gray (10YR 5/1-10YR 6/1), sandy, vitric to crystal-rich volcanic ash. Irregular lenses and blobs in Section 1, 39-42 cm; Section 2, 39-41 and 63-67 cm; Section 5, 66-76 cm; Section 6, 2-3, 25-28, and 144-150 cm. Gray sand layer in Section 7, 0-5 cm, with sharp base, inclined bedding, and possible grading.</p> <p><i>Whole Round Sampling:</i> IW: Section 4, 143-150 cm.</p>
0.5		1	late Pleistocene			P S X		
1.0						S		
1.5						P X		
2.0		2				P C X		
2.5						S		
3.0						P S X		
3.5		3				P X		
4.0						P X		
4.5		4				P C	10YR 6/2 To 10YR 7/2	
5.0						P I X		
5.5					P C			
6.0		5	early Pleistocene			P X		
6.5						P X		
7.0		6				P C		
7.5						P S		
8.0						S X		
8.5		7				P C		
9.0						P S		
9.5		CC				X		
						M		

Drilled 9.5-420.8 mbsf



SITE 948 HOLE C CORE 2X

CORED 420.8 - 430.5 mbsf

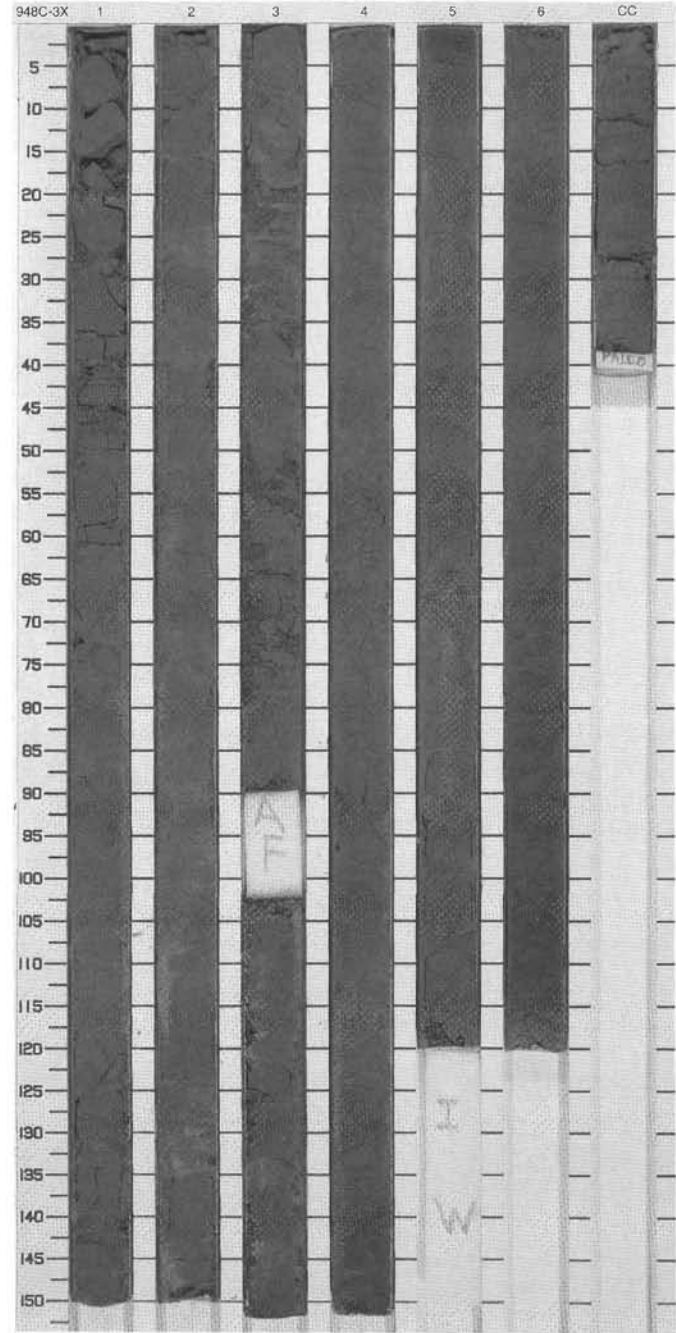
Bedding Dip	Scaly Fabric	Deformation Features	Meter	Graphic Lith.	Section Age	Structure	Disturb	Sample	Color	Description
0			0							<p>CLAYSTONE</p> <p>Major Lithology: Moderately bioturbated, "biscuited," gray (5Y 5/1 to 5Y 6/1) claystone. Strongly bioturbated intervals are slightly darker gray (5Y 4/1) or olive gray (5Y 5/2). Some "biscuits" contain sediment breccias, as shown by angular pieces of different color within the biscuit; these intervals include Section 3, 13-24, 36-44, and 144-150 cm; Section 4, 52-65 cm; and CC, 0-18 cm.</p> <p>Structural Features: Shallow-dipping zones of intense scaly fabric in Section 2, 85-102 cm; Section 4, 26-33 cm; and Section 5, 78-118 cm. Scaly fabric-parallel, &lt;1-mm-thick rhodochrosite veins in Sections 2 and 5. Sediment-filled veins in Section 3, 23-39 cm; Section 6, 30-33 cm; and CC, 26-27 cm. True bedding dip 21-51 degrees.</p> <p>Whole Round Sampling: AM: Section 2, 13-25 cm. IW: Section 4, 130-150 cm.</p>
30			1		1		X			
60			2		2		P X			
		RV	3		3		P W X			
		SV	4		4		S X			
			5		5		P X			
			6		6		P X			
			7		7		P X			
		RV	8		8		P X			
		SV	9		9		P X			
		SV	10		10		P X			
			11		11		P X			
			12		12		P X			
			13		13		P X			
			14		14		P X			
			15		15		P X			
			16		16		P X			
			17		17		P X			
			18		18		P X			
			19		19		P X			
			20		20		P X			
			21		21		P X			
			22		22		P X			
			23		23		P X			
			24		24		P X			
			25		25		P X			
			26		26		P X			
			27		27		P X			
			28		28		P X			
			29		29		P X			
			30		30		P X			
			31		31		P X			
			32		32		P X			
			33		33		P X			
			34		34		P X			
			35		35		P X			
			36		36		P X			
			37		37		P X			
			38		38		P X			
			39		39		P X			
			40		40		P X			
			41		41		P X			
			42		42		P X			
			43		43		P X			
			44		44		P X			
			45		45		P X			
			46		46		P X			
			47		47		P X			
			48		48		P X			
			49		49		P X			
			50		50		P X			
			51		51		P X			
			52		52		P X			
			53		53		P X			
			54		54		P X			
			55		55		P X			
			56		56		P X			
			57		57		P X			
			58		58		P X			
			59		59		P X			
			60		60		P X			
			61		61		P X			
			62		62		P X			
			63		63		P X			
			64		64		P X			
			65		65		P X			
			66		66		P X			
			67		67		P X			
			68		68		P X			
			69		69		P X			
			70		70		P X			
			71		71		P X			
			72		72		P X			
			73		73		P X			
			74		74		P X			
			75		75		P X			
			76		76		P X			
			77		77		P X			
			78		78		P X			
			79		79		P X			
			80		80		P X			
			81		81		P X			
			82		82		P X			
			83		83		P X			
			84		84		P X			
			85		85		P X			
			86		86		P X			
			87		87		P X			
			88		88		P X			
			89		89		P X			
			90		90		P X			
			91		91		P X			
			92		92		P X			
			93		93		P X			
			94		94		P X			
			95		95		P X			
			96		96		P X			
			97		97		P X			
			98		98		P X			
			99		99		P X			
			100		100		P X			
			101		101		P X			
			102		102		P X			
			103		103		P X			
			104		104		P X			
			105		105		P X			
			106		106		P X			
			107		107		P X			
			108		108		P X			
			109		109		P X			
			110		110		P X			
			111		111		P X			
			112		112		P X			
			113		113		P X			
			114		114		P X			
			115		115		P X			
			116		116		P X			
			117		117		P X			
			118		118		P X			
			119		119		P X			
			120		120		P X			
			121		121		P X			
			122		122		P X			
			123		123		P X			
			124		124		P X			
			125		125		P X			
			126		126		P X			
			127		127		P X			
			128		128		P X			
			129		129		P X			
			130		130		P X			
			131		131		P X			
			132		132		P X			
			133		133		P X			
			134		134		P X			
			135		135		P X			
			136		136		P X			
			137		137		P X			
			138		138		P X			
			139		139		P X			
			140		140		P X			
			141		141		P X			
			142		142		P X			
			143		143		P X			
			144		144		P X			
			145		145		P X			
			146		146		P X			
			147		147		P X			
			148		148		P X			
			149		149		P X			
			150		150		P X			
			151		151		P X			
			152		152		P X			
			153		153		P X			
			154		154		P X			
			155		155		P X			
			156		156		P X			
			157		157		P X			
			158		158		P X			
			159		159		P X			
			160		160		P X			
			161		161		P X			
			162		162		P X			
			163		163		P X			
			164		164		P X			
			165		165		P X			
			166		166		P X			
			167		167		P X			
			168		168		P X			
			169		169		P X			
			170		170		P X			
			171		171		P X			
			172		172		P X			
			173		173		P X			
			174		174		P X			
			175		175		P X			
			176		176		P X			
			177		177		P X			
			178		178		P X			

SITE 948 HOLE C CORE 3X

CORED 430.5 - 440.1 mbsf

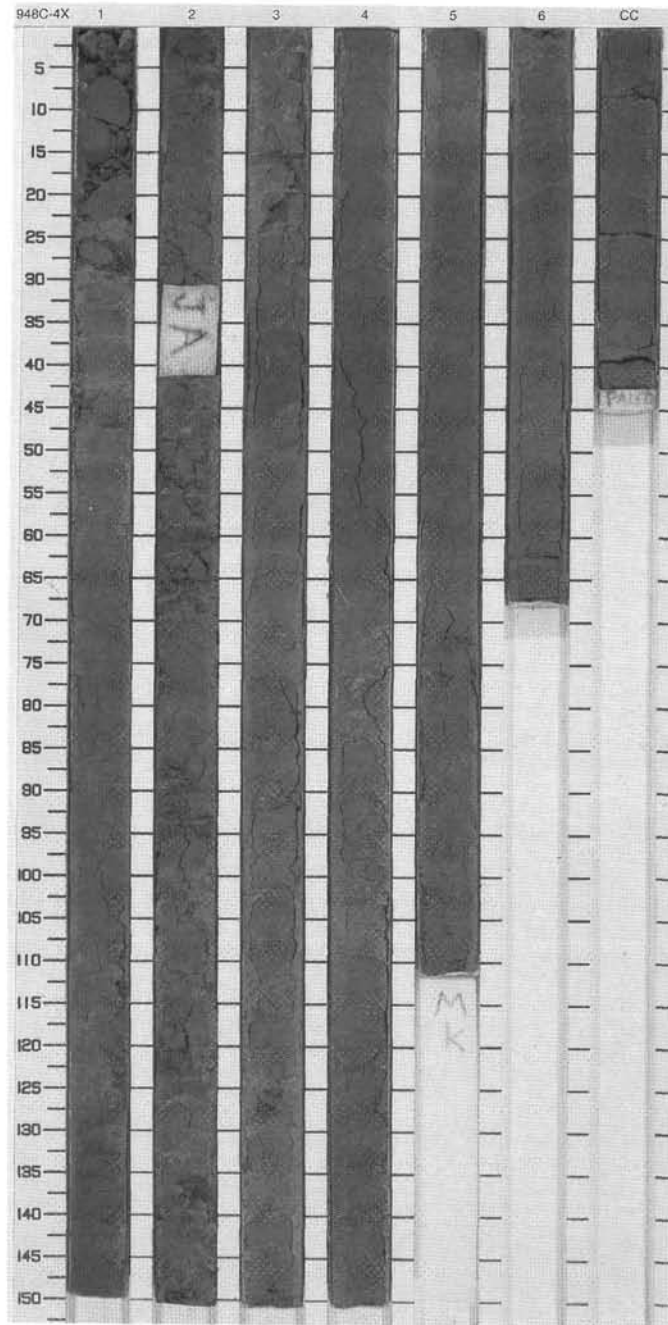
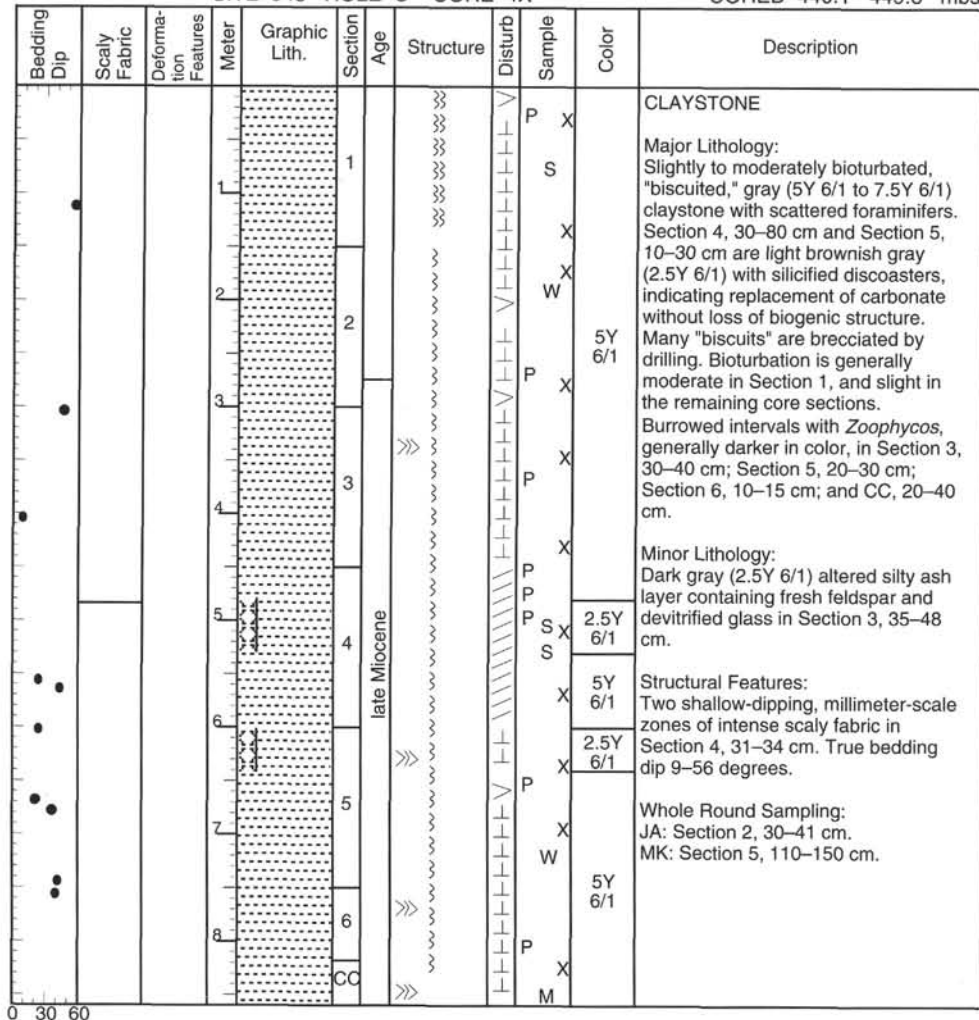
Bedding Dip	Scaly Fabric	Deformation Features	Meter	Graphic Lith.	Section Age	Structure	Disturb	Sample	Color	Description
		SV	1	[Dotted pattern]	1	~	+	P X	5Y 5/1 To 5Y 6/1  5Y 4/2 To 5Y 5/2	<b>CLAYSTONE</b>  Major Lithology: Moderately bioturbated, "biscuited," gray (5Y 5/1 to 5Y 6/1) to olive gray (5Y 4/2 to 5Y 5/2) claystone. Strongly bioturbated intervals slightly darker in color (5Y 2.5/1-5Y 4/1). <i>Zoophycos</i> burrows in Section 2, 0-15 cm.  Structural Features: Millimeter- to decimeter-scale zones of intense scaly fabric in Section 4, 138-150 cm; Section 5, 0-5 cm; and Section 6, 70-113 cm. True dip of these zones is 28-47 degrees, and they show reverse sense of displacement. Sediment-filled veins in Section 4, 112-117 cm and Section 5, 80-85 cm. True bedding dips 26-47 degrees.  Whole Round Sampling: AF: Section 3, 89-102 cm. IW: Section 5, 120-150 cm.
			2	[Dotted pattern]	2	~	+	P X		
			3	[Dotted pattern]	3	~	+	P X		
			4	[Dotted pattern]	3	~	+	P X		
			5	[Dotted pattern]	4	~	+	P X		
	thrust	SV	6	[Dotted pattern]	6	~	+	S X		
		SV	7	[Dotted pattern]	5	~	+	P X		
	thrust		8	[Dotted pattern]	6	~	+	P X		
			9	[Dotted pattern]	CC	~	+	S X		
						~	+	M X		

0 30 60



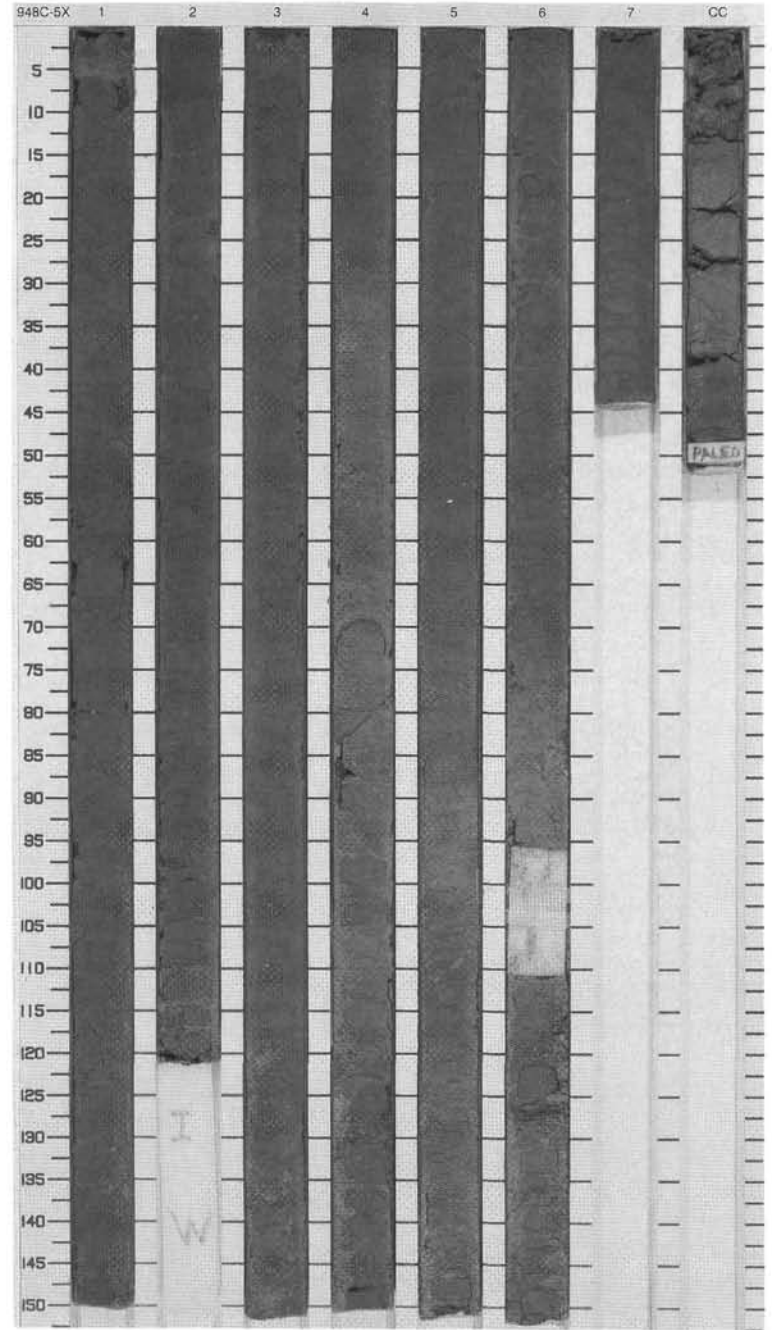
SITE 948 HOLE C CORE 4X

CORED 440.1 - 449.8 mbsf



SITE 948 HOLE C CORE 5X CORED 449.8 - 459.4 mbsf

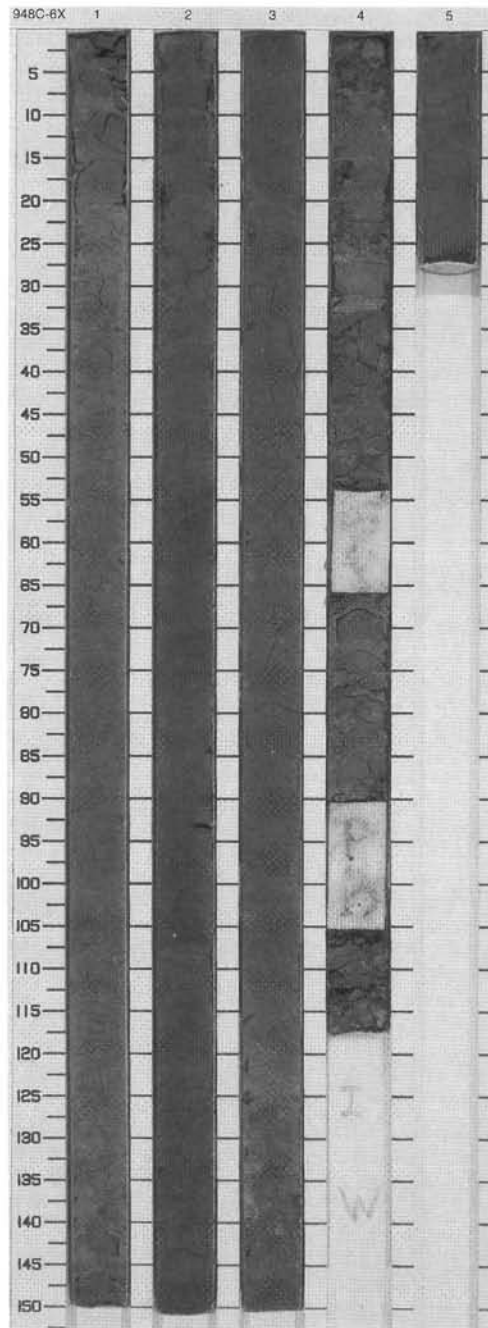
Bedding Dip	Scaly Fabric	Deformation Features	Meter	Graphic Lith.	Section Age	Structure	Disturb	Sample	Color	Description
0 30 60			1	[Dotted pattern]	1	}}	∇	X		<p>CLAYSTONE AND CLAYSTONE WITH NANNOFOSSILS</p> <p>Major Lithology:                      Gray (5Y 6/1-7.5Y 6/1), mottled, slightly bioturbated, "biscuited" claystone in Sections 1-3. Grades to gray (5Y 6/1-7.5Y 6/1), mottled, moderately bioturbated, "biscuited" claystone with nannofossils (discoasters and coccoliths) near base of Section 3. <i>Zoophycos</i> in Section 1, 55-60 cm; Section 4, 50-90 cm; and Section 6, 130 cm. Scattered foraminifers in Section 4, 30-45 cm and Sections 5-CC.</p> <p>Structural Features:                      True bedding dips 8-56 degrees.</p> <p>Whole Round Sampling:                      IW: Section 2, 120-150 cm.                      HT: Section 6, 93-108 cm.</p>
			2	[Dotted pattern]	2	}}	∇	X		
			3	[Dotted pattern]	3	}}	∇	X		
			4	[Dotted pattern]	4	}}	∇	X		
			5	[Dotted pattern]	4	}}	∇	S X	5Y 6/1	
			6	[Dotted pattern]	4	}}	∇	P S X		
			7	[Dotted pattern]	5	}}	∇	X		
			8	[Dotted pattern]	6	}}	∇	P X		
			9	[Dotted pattern]	7	}}	∇	P W X		
				[Dotted pattern]	CC	}}	∇	P P		
							∇	P M	10Y 6/1	



SITE 948 HOLE C CORE 6X

CORED 459.4 - 469.0 mbsf

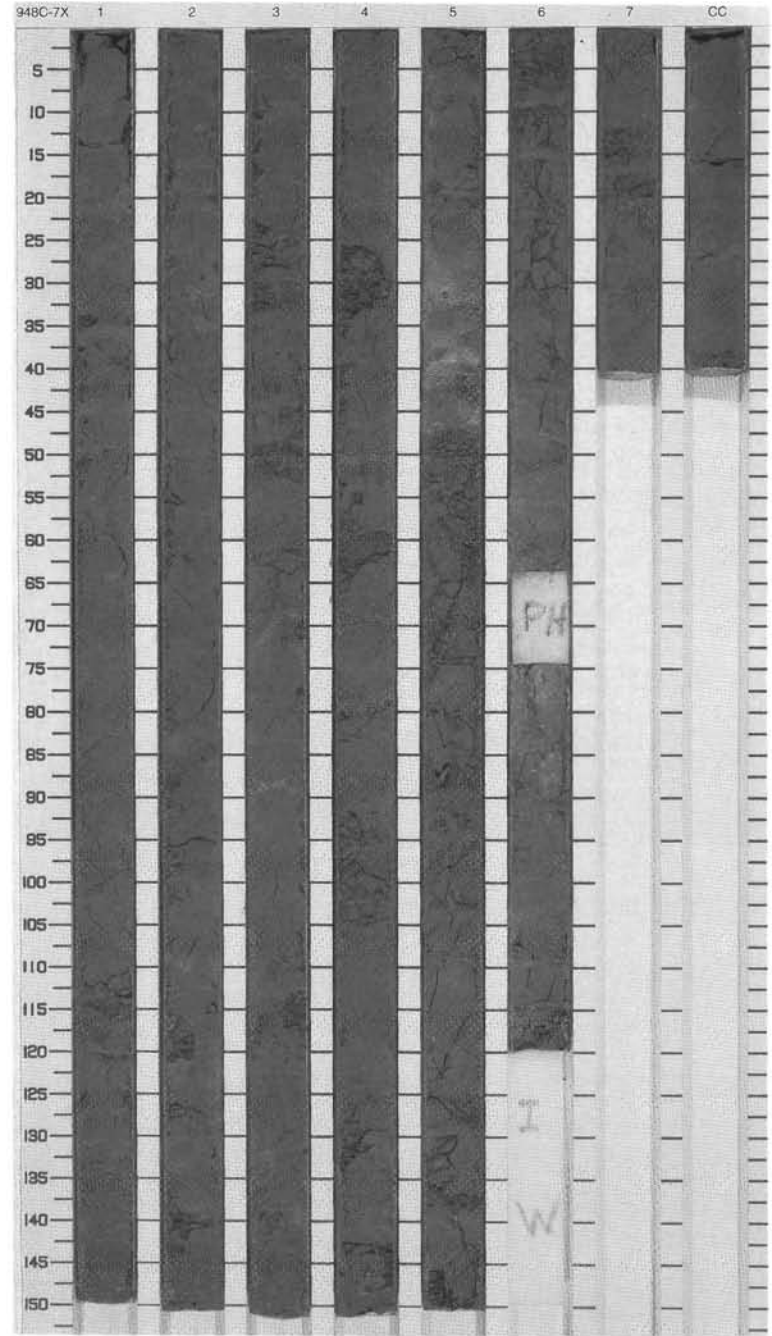
Bedding Dip	Scaly Fabric	Deformation Features	Meter	Graphic Lith.	Section	Age	Structure	Disturb	Sample	Color	Description
0 30 60			1	[Dotted pattern]	1	late Miocene	»»	X	P S	10Y 6/1	<p>CLAYSTONE AND CLAYSTONE WITH NANNOFOSSILS</p> <p>Major Lithology: Gray (7.5Y 6/1–10Y 6/1), mottled, slightly bioturbated claystone with nannofossils in Section 1. Grades to gray (5Y 5/1–5Y 6/1), mottled, slightly bioturbated claystone in Section 2 and below. <i>Zoophycos</i> in Section 1, 40 cm.</p> <p>Minor Lithology: Brownish gray (2.5Y 6/1), bioturbated claystone with irregular wispy contacts, possibly altered ash layer, in Section 2, 50–62 cm.</p> <p>Structural Features: Four shallow-dipping, decimeter-scale zones of intense scaly fabric alternating with fracture networks in gray to brownish gray interval in Section 2, 40–137 cm. Fracture network of similar color in Section 3, 115–120 cm. True bedding dips 2 to 55 degrees.</p> <p>Whole Round Sampling: SP: Section 4, 53–65 cm. PB: Section 4, 89–104 cm. IW: Section 4, 118–150 cm.</p>
			2	[Dotted pattern]	2			X	P S	2.5Y 6/1	
			3	[Dotted pattern]	3			X	P X	5Y 6/1	
			4	[Dotted pattern]	4			X	P	2.5Y 5/1	
			5	[Dotted pattern]	4			X	P W	5Y 5/1 To 5Y 6/1	
			6	[Dotted pattern]	5			X	P W X	5Y 6/1	
				[Dotted pattern]	CC				P M	5Y 6/1	



SITE 948 HOLE C CORE 7X

CORED 469.0 - 478.7 mbsf

Bedding Dip	Scaly Fabric	Deformation Features	Meter	Graphic Lith.	Section Age	Structure	Disturb	Sample	Color	Description
			1	[Dotted pattern]	1	~		P X	5Y 5/1 To 5Y 5/2	<p>CLAYSTONE</p> <p>Major Lithology:                      Gray (5Y 5/1-5Y 6/1) to olive gray (5Y 5/2), slightly to moderately bioturbated, "biscuited" claystone. Local olive (5Y 4/3-5Y 5/3) intervals in Sections 2-4. Very dark gray to dark olive gray (5Y 3/1-5Y 3/2) mud chips in Section 4, 110 cm; Section 5, 31 cm; Section 6, 75 cm; and Section 6, 85 cm. <i>Zoophycos</i> in Section 6, 110-115 cm.</p> <p>Structural Features:                      Three shallow-dipping, millimeter-scale zones of intense scaly fabric in Section 3, 23-73 cm. Rhodochrosite veins, up to 5 mm thick and with variable dips, in Section 3, 23-24, 68-72, and 87-90 cm. True bedding dips 35-90 degrees.</p> <p>Whole Round Sampling:                      PH: Section 6, 63-74 cm.                      IW: Section 6, 120-150 cm.</p>
			2	[Dotted pattern]	2	~	P X			
			3	[Dotted pattern]	3	~	P X	5Y 5/1		
		RV	4	[Dotted pattern]	4	~	P X	5Y 5/3		
		RV RV	5	[Dotted pattern]	5	~	P X	5Y 5/1		
			6	[Dotted pattern]	6	◆	P X			
			7	[Dotted pattern]	7	◆	P X			
			8	[Dotted pattern]	8	◆	P X	5Y 5/1 To 5Y 5/2		
			9	[Dotted pattern]	9	~	P S I			
					CC		S X M	2.5Y 5/2		

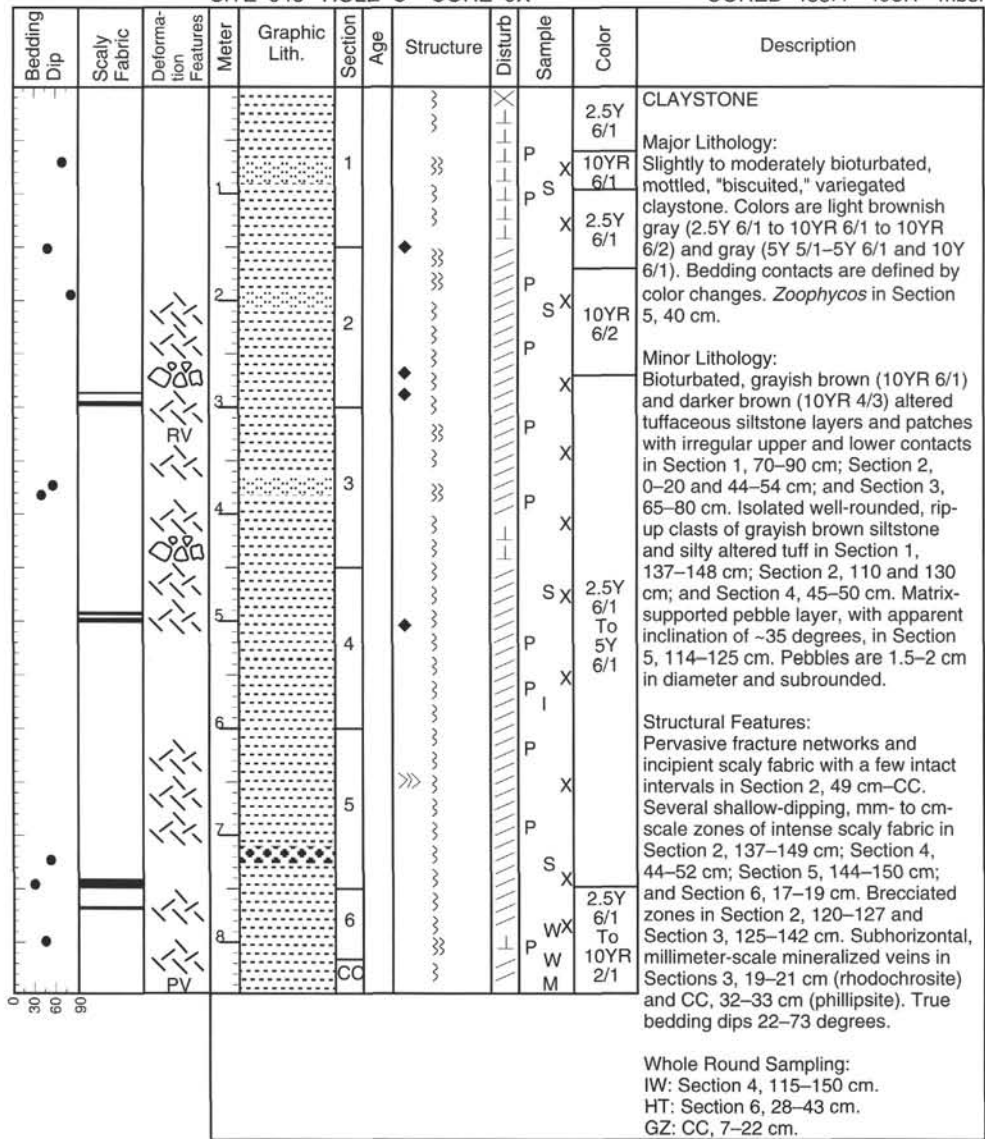


SITE 948 HOLE C CORE 8X

CORED 478.7 - 488.4 mbsf

Bedding Dip	Scaly Fabric	Deformation Features	Meter	Graphic Lith.	Section	Age	Structure	Disturb	Sample	Color	Description
90			1	[Dotted pattern]	1		}}	∇	X	5Y 5/1	<p>CLAYSTONE</p> <p>Major Lithology: Moderately bioturbated, mottled, and "biscuited" claystone. Colors are dark gray-gray (5Y 4/1–5Y 5/1), light brownish gray (10YR 6/2), brown (10YR 5/3), yellowish brown (10YR 5/4), reddish gray (5Y 5/2), and reddish brown (5YR 5/4). <i>Zoophycos</i> in Section 2, 130–137 cm. Mud chips in Section 4, 96 and 134–150 cm; and Section 6, 20 cm.</p> <p>Structural Features: Three shallow-dipping, millimeter-scale zones of intense scaly fabric in fractured interval in Section 2, 27–78 cm. Isolated scaly zone in Section 7. Several rhodocrosite crystals in Section 2, 8–10 cm. True bedding dips 48–58 degrees.</p> <p>Whole Round Sampling: MK: Section 3, 110–150 cm. JA: Section 4, 70–80 cm. PB: Section 6, 25–40 cm. IW: Section 6, 120–150 cm. HT: CC, 12–26 cm.</p>
			2	[Dotted pattern]	2		}}	∇	P	10YR 6/2	
		RV	3	[Dotted pattern]	3		}}	∇	P	10YR 5/3	
			4	[Dotted pattern]	4		}}	∇	P	5Y 4/1	
			5	[Dotted pattern]	5		}}	∇	P	5Y 5/1	
			6	[Dotted pattern]	6		}}	∇	P	10YR 5/4	
			7	[Dotted pattern]	7		}}	∇	P	5YR 5/2	
			8	[Dotted pattern]	8		}}	∇	P	5YR 5/2	
			9	[Dotted pattern]	9		}}	∇	P	5YR 5/2	
			10	[Dotted pattern]	10		}}	∇	P	5YR 5/2	
			11	[Dotted pattern]	11		}}	∇	P	5YR 5/2	
			12	[Dotted pattern]	12		}}	∇	P	5YR 5/2	
			13	[Dotted pattern]	13		}}	∇	P	5YR 5/2	
			14	[Dotted pattern]	14		}}	∇	P	5YR 5/2	
			15	[Dotted pattern]	15		}}	∇	P	5YR 5/2	
			16	[Dotted pattern]	16		}}	∇	P	5YR 5/2	
			17	[Dotted pattern]	17		}}	∇	P	5YR 5/2	
			18	[Dotted pattern]	18		}}	∇	P	5YR 5/2	
			19	[Dotted pattern]	19		}}	∇	P	5YR 5/2	
			20	[Dotted pattern]	20		}}	∇	P	5YR 5/2	
			21	[Dotted pattern]	21		}}	∇	P	5YR 5/2	
			22	[Dotted pattern]	22		}}	∇	P	5YR 5/2	
			23	[Dotted pattern]	23		}}	∇	P	5YR 5/2	
			24	[Dotted pattern]	24		}}	∇	P	5YR 5/2	
			25	[Dotted pattern]	25		}}	∇	P	5YR 5/2	
			26	[Dotted pattern]	26		}}	∇	P	5YR 5/2	
			27	[Dotted pattern]	27		}}	∇	P	5YR 5/2	
			28	[Dotted pattern]	28		}}	∇	P	5YR 5/2	
			29	[Dotted pattern]	29		}}	∇	P	5YR 5/2	
			30	[Dotted pattern]	30		}}	∇	P	5YR 5/2	
			31	[Dotted pattern]	31		}}	∇	P	5YR 5/2	
			32	[Dotted pattern]	32		}}	∇	P	5YR 5/2	
			33	[Dotted pattern]	33		}}	∇	P	5YR 5/2	
			34	[Dotted pattern]	34		}}	∇	P	5YR 5/2	
			35	[Dotted pattern]	35		}}	∇	P	5YR 5/2	
			36	[Dotted pattern]	36		}}	∇	P	5YR 5/2	
			37	[Dotted pattern]	37		}}	∇	P	5YR 5/2	
			38	[Dotted pattern]	38		}}	∇	P	5YR 5/2	
			39	[Dotted pattern]	39		}}	∇	P	5YR 5/2	
			40	[Dotted pattern]	40		}}	∇	P	5YR 5/2	
			41	[Dotted pattern]	41		}}	∇	P	5YR 5/2	
			42	[Dotted pattern]	42		}}	∇	P	5YR 5/2	
			43	[Dotted pattern]	43		}}	∇	P	5YR 5/2	
			44	[Dotted pattern]	44		}}	∇	P	5YR 5/2	
			45	[Dotted pattern]	45		}}	∇	P	5YR 5/2	
			46	[Dotted pattern]	46		}}	∇	P	5YR 5/2	
			47	[Dotted pattern]	47		}}	∇	P	5YR 5/2	
			48	[Dotted pattern]	48		}}	∇	P	5YR 5/2	
			49	[Dotted pattern]	49		}}	∇	P	5YR 5/2	
			50	[Dotted pattern]	50		}}	∇	P	5YR 5/2	
			51	[Dotted pattern]	51		}}	∇	P	5YR 5/2	
			52	[Dotted pattern]	52		}}	∇	P	5YR 5/2	
			53	[Dotted pattern]	53		}}	∇	P	5YR 5/2	
			54	[Dotted pattern]	54		}}	∇	P	5YR 5/2	
			55	[Dotted pattern]	55		}}	∇	P	5YR 5/2	
			56	[Dotted pattern]	56		}}	∇	P	5YR 5/2	
			57	[Dotted pattern]	57		}}	∇	P	5YR 5/2	
			58	[Dotted pattern]	58		}}	∇	P	5YR 5/2	
			59	[Dotted pattern]	59		}}	∇	P	5YR 5/2	
			60	[Dotted pattern]	60		}}	∇	P	5YR 5/2	
			61	[Dotted pattern]	61		}}	∇	P	5YR 5/2	
			62	[Dotted pattern]	62		}}	∇	P	5YR 5/2	
			63	[Dotted pattern]	63		}}	∇	P	5YR 5/2	
			64	[Dotted pattern]	64		}}	∇	P	5YR 5/2	
			65	[Dotted pattern]	65		}}	∇	P	5YR 5/2	
			66	[Dotted pattern]	66		}}	∇	P	5YR 5/2	
			67	[Dotted pattern]	67		}}	∇	P	5YR 5/2	
			68	[Dotted pattern]	68		}}	∇	P	5YR 5/2	
			69	[Dotted pattern]	69		}}	∇	P	5YR 5/2	
			70	[Dotted pattern]	70		}}	∇	P	5YR 5/2	
			71	[Dotted pattern]	71		}}	∇	P	5YR 5/2	
			72	[Dotted pattern]	72		}}	∇	P	5YR 5/2	
			73	[Dotted pattern]	73		}}	∇	P	5YR 5/2	
			74	[Dotted pattern]	74		}}	∇	P	5YR 5/2	
			75	[Dotted pattern]	75		}}	∇	P	5YR 5/2	
			76	[Dotted pattern]	76		}}	∇	P	5YR 5/2	
			77	[Dotted pattern]	77		}}	∇	P	5YR 5/2	
			78	[Dotted pattern]	78		}}	∇	P	5YR 5/2	
			79	[Dotted pattern]	79		}}	∇	P	5YR 5/2	
			80	[Dotted pattern]	80		}}	∇	P	5YR 5/2	
			81	[Dotted pattern]	81		}}	∇	P	5YR 5/2	
			82	[Dotted pattern]	82		}}	∇	P	5YR 5/2	
			83	[Dotted pattern]	83		}}	∇	P	5YR 5/2	
			84	[Dotted pattern]	84		}}	∇	P	5YR 5/2	
			85	[Dotted pattern]	85		}}	∇	P	5YR 5/2	
			86	[Dotted pattern]	86		}}	∇	P	5YR 5/2	
			87	[Dotted pattern]	87		}}	∇	P	5YR 5/2	
			88	[Dotted pattern]	88		}}	∇	P	5YR 5/2	
			89	[Dotted pattern]	89		}}	∇	P	5YR 5/2	
			90	[Dotted pattern]	90		}}	∇	P	5YR 5/2	
			91	[Dotted pattern]	91		}}	∇	P	5YR 5/2	
			92	[Dotted pattern]	92		}}	∇	P	5YR 5/2	
			93	[Dotted pattern]	93		}}	∇	P	5YR 5/2	
			94	[Dotted pattern]	94		}}	∇	P	5YR 5/2	
			95	[Dotted pattern]	95		}}	∇	P	5YR 5/2	
			96	[Dotted pattern]	96		}}	∇	P	5YR 5/2	
			97	[Dotted pattern]	97		}}	∇	P	5YR 5/2	
			98	[Dotted pattern]	98		}}	∇	P	5YR 5/2	
			99	[Dotted pattern]	99		}}	∇	P	5YR 5/2	
			100	[Dotted pattern]	100		}}	∇	P	5YR 5/2	
			101	[Dotted pattern]	101		}}	∇	P	5YR 5/2	
			102	[Dotted pattern]	102		}}	∇	P	5YR 5/2	
			103	[Dotted pattern]	103		}}	∇	P	5YR 5/2	
			104	[Dotted pattern]	104		}}	∇	P	5YR 5/2	
			105	[Dotted pattern]	105		}}	∇	P	5YR 5/2	
			106	[Dotted pattern]	106		}}	∇	P	5YR 5/2	
			107	[Dotted pattern]	107		}}	∇	P	5YR 5/2	
			108	[Dotted pattern]	108		}}	∇	P	5YR 5/2	
			109	[Dotted pattern]	109		}}	∇	P	5YR 5/2	
			110	[Dotted pattern]	110		}}	∇	P	5YR 5/2	
			111	[Dotted pattern]	111		}}	∇	P	5YR 5/2	
			112	[Dotted pattern]	112		}}	∇	P	5YR 5/2	
			113	[Dotted pattern]	113		}}	∇	P	5YR 5/2	
			114	[Dotted pattern]	114		}}	∇	P	5YR 5/2	
			115	[Dotted pattern]	115		}}	∇	P	5YR 5/2	
			116	[Dotted pattern]	116		}}	∇	P	5YR 5/2	
			117	[Dotted pattern]	117		}}	∇	P	5YR 5/2	
			118	[Dotted pattern]	118		}}	∇	P	5YR 5/2	
			119	[Dotted pattern]	119		}}	∇	P	5YR 5/2	
			120	[Dotted pattern]	120		}}	∇	P	5YR 5/2	
			121	[Dotted pattern]	121		}}	∇	P	5YR 5/2	
			122	[Dotted pattern]	122		}}	∇	P	5YR 5/2	
			123	[Dotted pattern]	123		}}	∇	P	5YR 5/2	
			124	[Dotted pattern]	124		}}	∇	P	5YR 5/2	
			125	[Dotted pattern]	125		}}	∇	P	5YR 5/2	
			126	[Dotted pattern]	126		}}	∇	P	5YR 5/2	
			127	[Dotted pattern]	127		}}	∇	P	5YR 5/2	
			128	[Dotted pattern]	128		}}	∇	P	5YR 5/2	
			129	[Dotted pattern]	129		}}	∇	P	5YR 5/2	
			130	[Dotted pattern]	130		}}	∇	P	5YR 5/2	
			131	[Dotted pattern]	131		}}	∇	P	5YR 5/2	
			132	[Dotted pattern]	132		}}	∇	P	5YR 5/2	
			133	[Dotted pattern]	133		}}	∇	P	5YR 5/2	
			134	[Dotted pattern]	134		}}	∇	P	5YR 5/2	
			135	[Dotted pattern]	135		}}	∇	P	5YR 5/2	
			136	[Dotted pattern]	136		}}	∇	P	5YR 5/2	
			137	[Dotted pattern]	137		}}	∇	P	5YR 5/2	
			138	[Dotted pattern]	138		}}	∇	P	5YR 5/2	

SITE 948 HOLE C CORE 9X CORED 488.4 - 498.1 mbsf

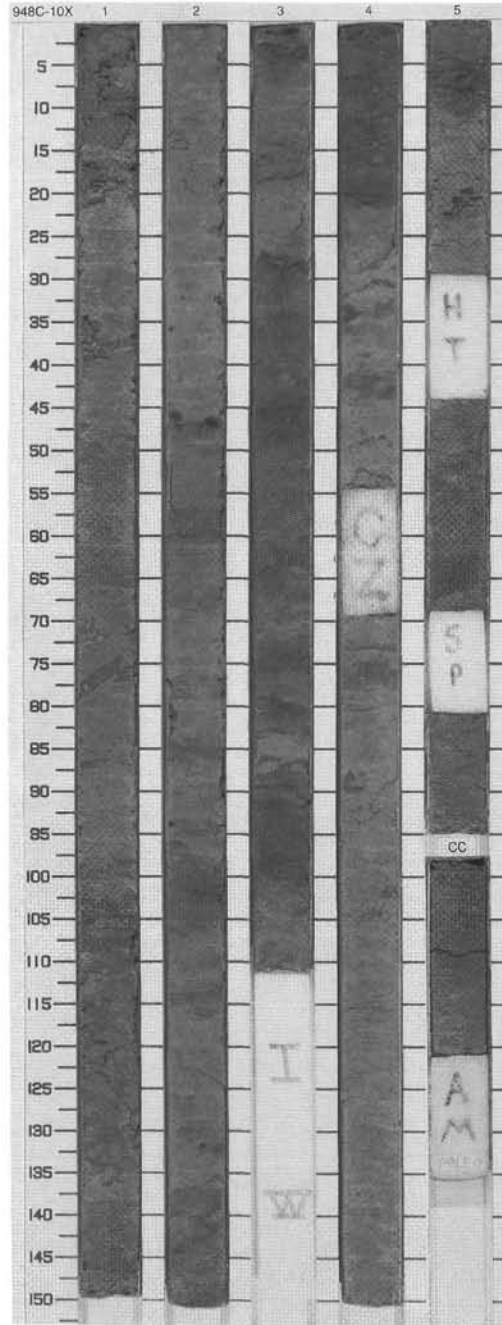


SITE 948 HOLE C CORE 10X

CORED 498.1 - 507.7 mbsf

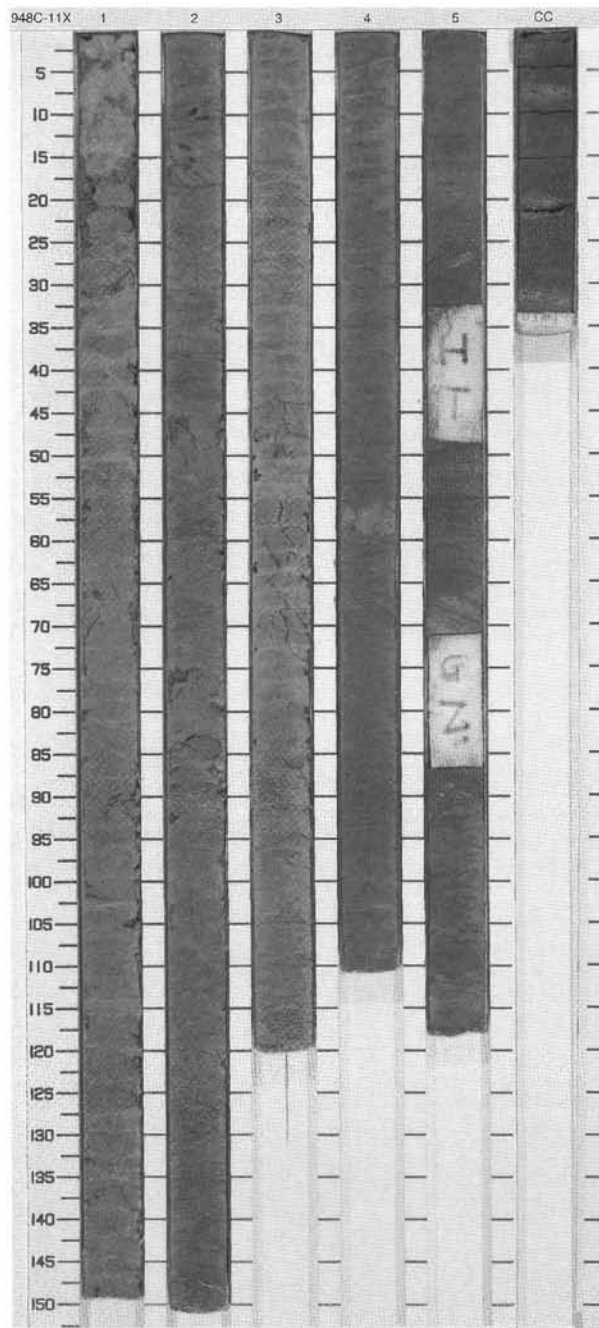
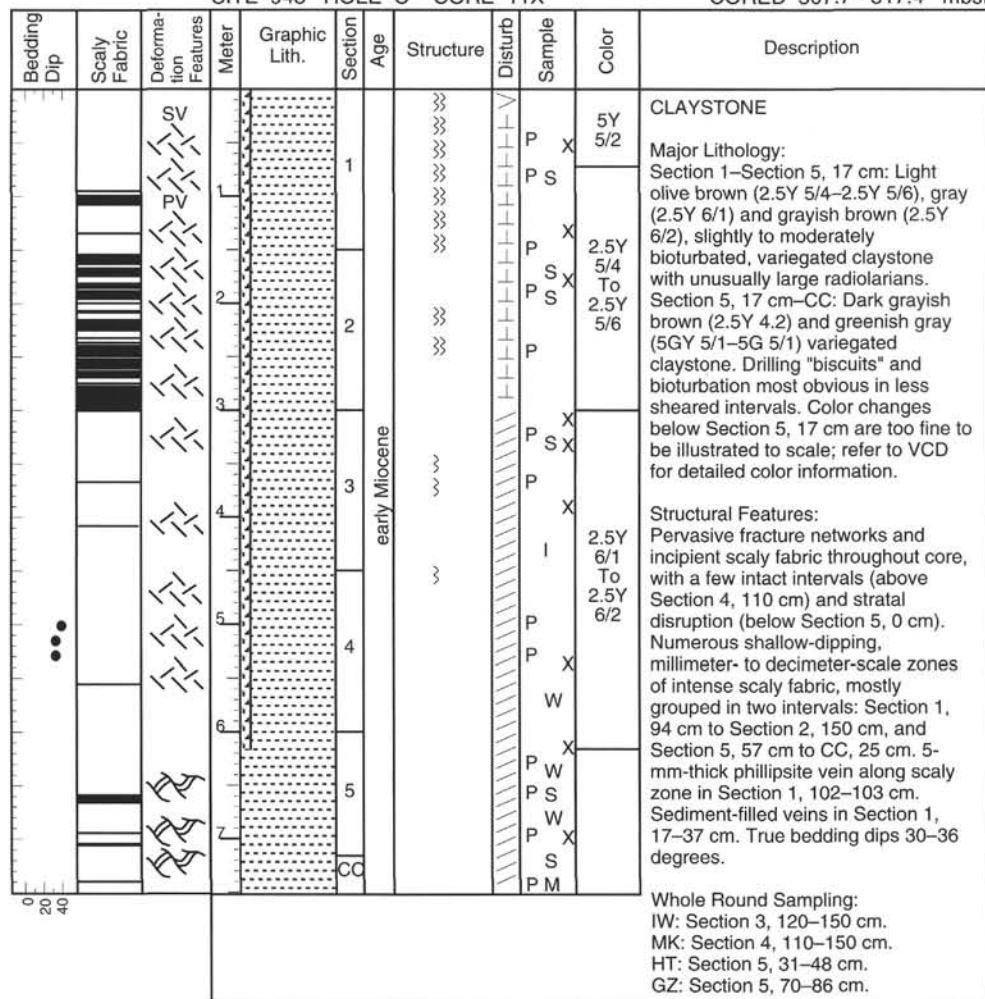
Bedding Dip	Scaly Fabric	Deformation Features	Meter	Graphic Lith.	Section	Age	Structure	Disturb	Sample	Color	Description
0			0		1		}}	X	P		CLAYSTONE AND CLAYSTONE WITH RADIOLARIANS
20			1		1		}}		S X	7.5YR 6/2	Major Lithology: Variegated claystone in Section 1, becoming variegated claystone with radiolarians further down in the core. Colors are pinkish gray (7.5YR 6/2-7.5YR 7/2) to gray (2.5Y 6/1 and 10YR 6/1) to light brownish gray (10YR 6/2), not correlative with the presence or absence of radiolarians. Local mottling and bioturbation.
40			2		2		}}		P S X	10YR 6/2	
			3		2		}}		P S	10YR 6/1	Minor Lithologies: Thin brown tuff layer in Section 1, 37-38 cm. Light brownish gray (2.5Y 6/1) claystone with radiolarians and thin lenses of darker brown tuff in Section 1, 66-85 cm.
			4		3		}}		P S	7.5YR 6/2	
			5		3	early Miocene	}}		P S X	7.5YR 6/1	Structural Features: Pervasive fracture networks and incipient scaly fabric throughout core, with a few intact intervals. Numerous shallow-dipping, millimeter- to decimeter-scale zones of intense scaly fabric grouped in three intervals: Section 1, 22 cm to Section 2, 10 cm; Section 2, 128 cm to Section 3, 83 cm; and Section 4, 15 cm to CC, 14 cm.
			6		4		}}		P S X	10YR 6/1	
			7		4		}}		P W	7.5YR 7/2	Millimeter-scale rhodochrosite vein along a scaly zone in Section 5, 66-67 cm. One true bedding dip of 22 degrees; apparent (i.e. minimal) bedding dips up to 38 degrees.
			8		5		}}		P S X	10YR 6/2	
			9		5		}}		P W	10YR 6/1	
		RV	10		5		}}		P W		
			11		CC				P W		
			12		CC				M		

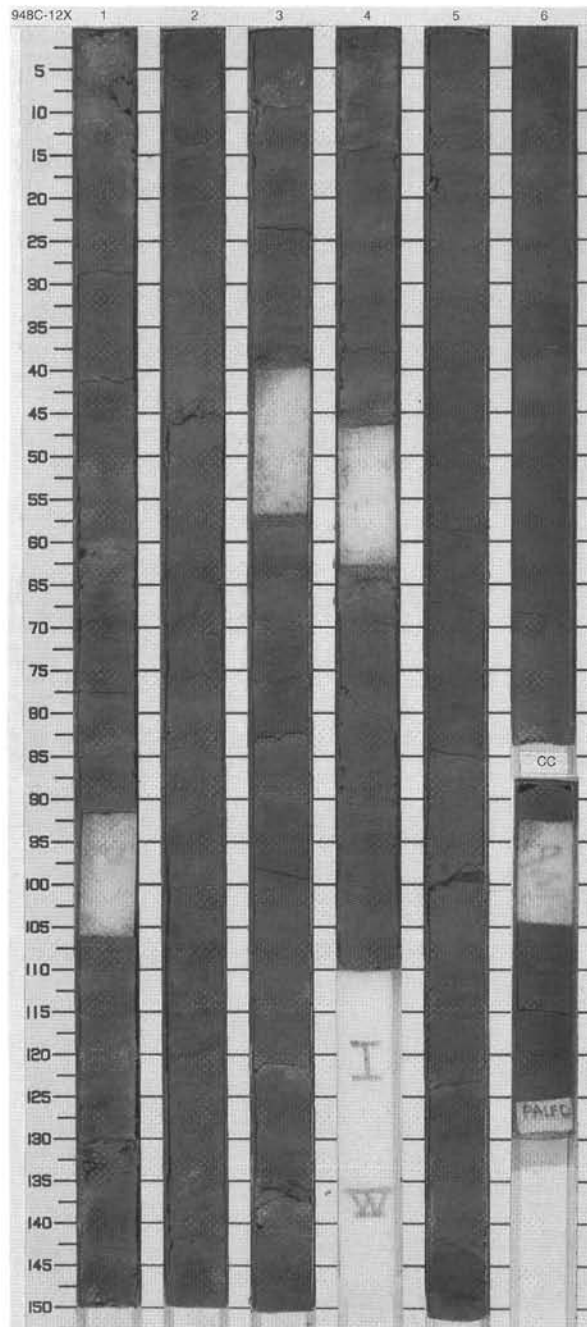
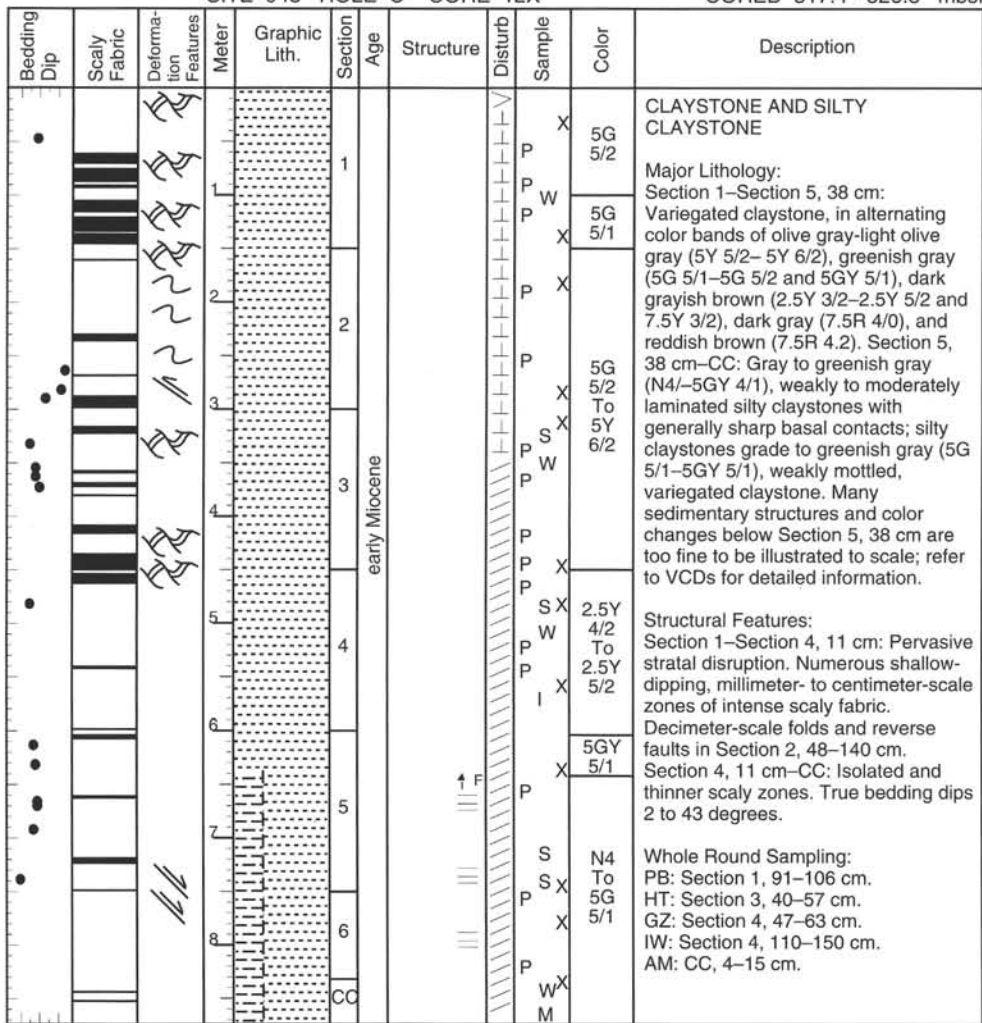
Whole Round Sampling:  
 IW: Section 3, 110-150 cm.  
 GZ: Section 4, 54-69 cm.  
 HT: Section 5, 28-43 cm.  
 SP: Section 5, 68-80 cm.  
 AM: CC, 23-35 cm.



## SITE 948 HOLE C CORE 11X

CORED 507.7 - 517.4 mbsf

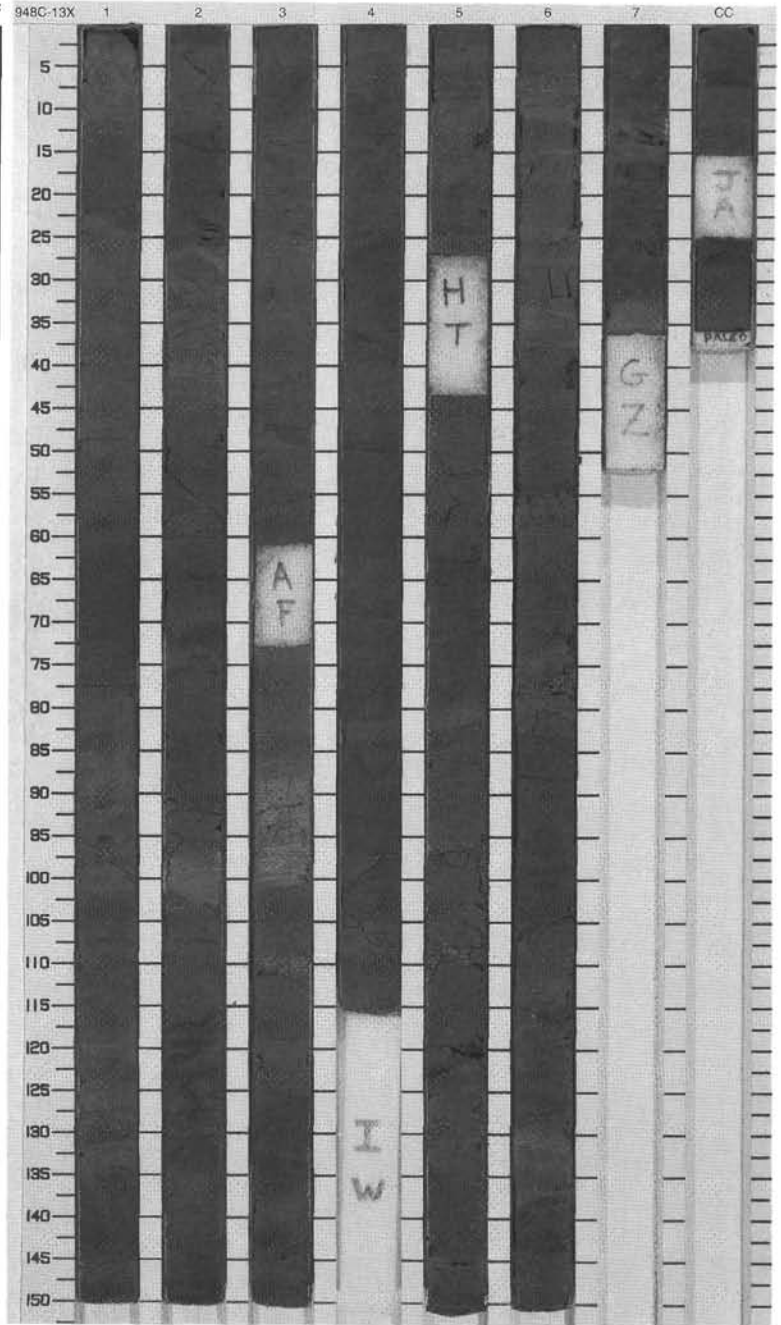




SITE 948 HOLE C CORE 13X

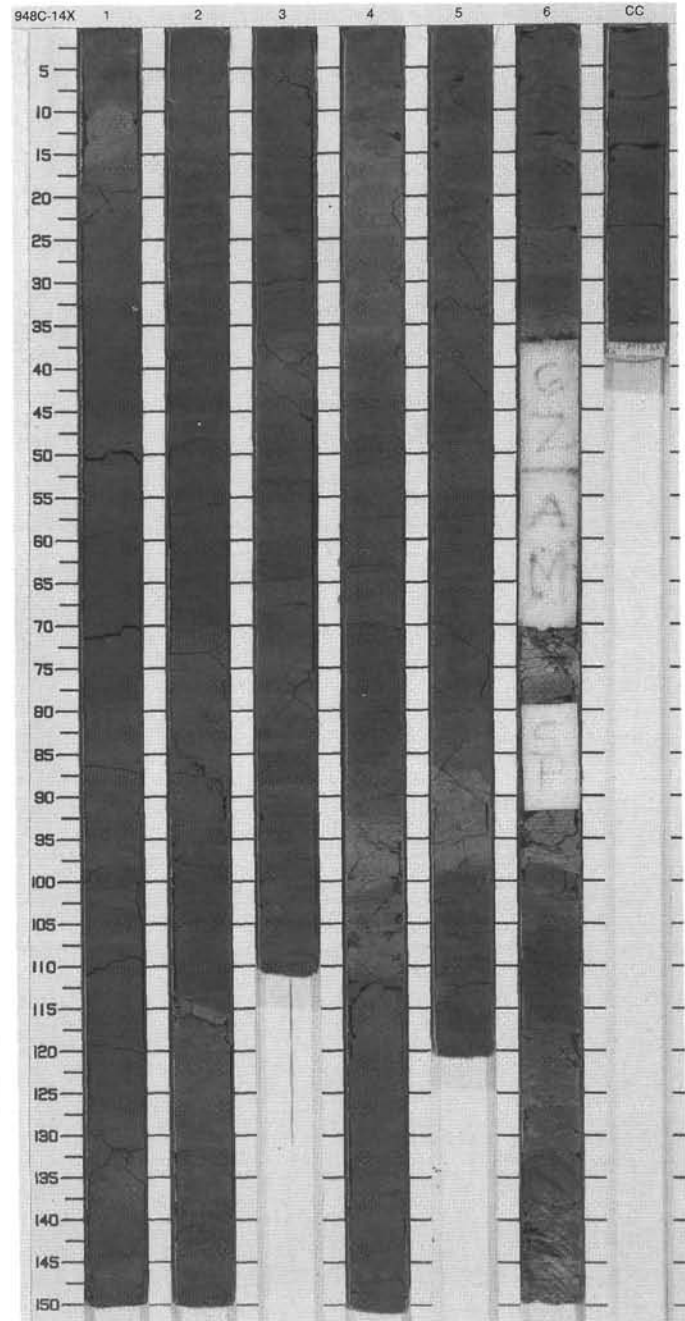
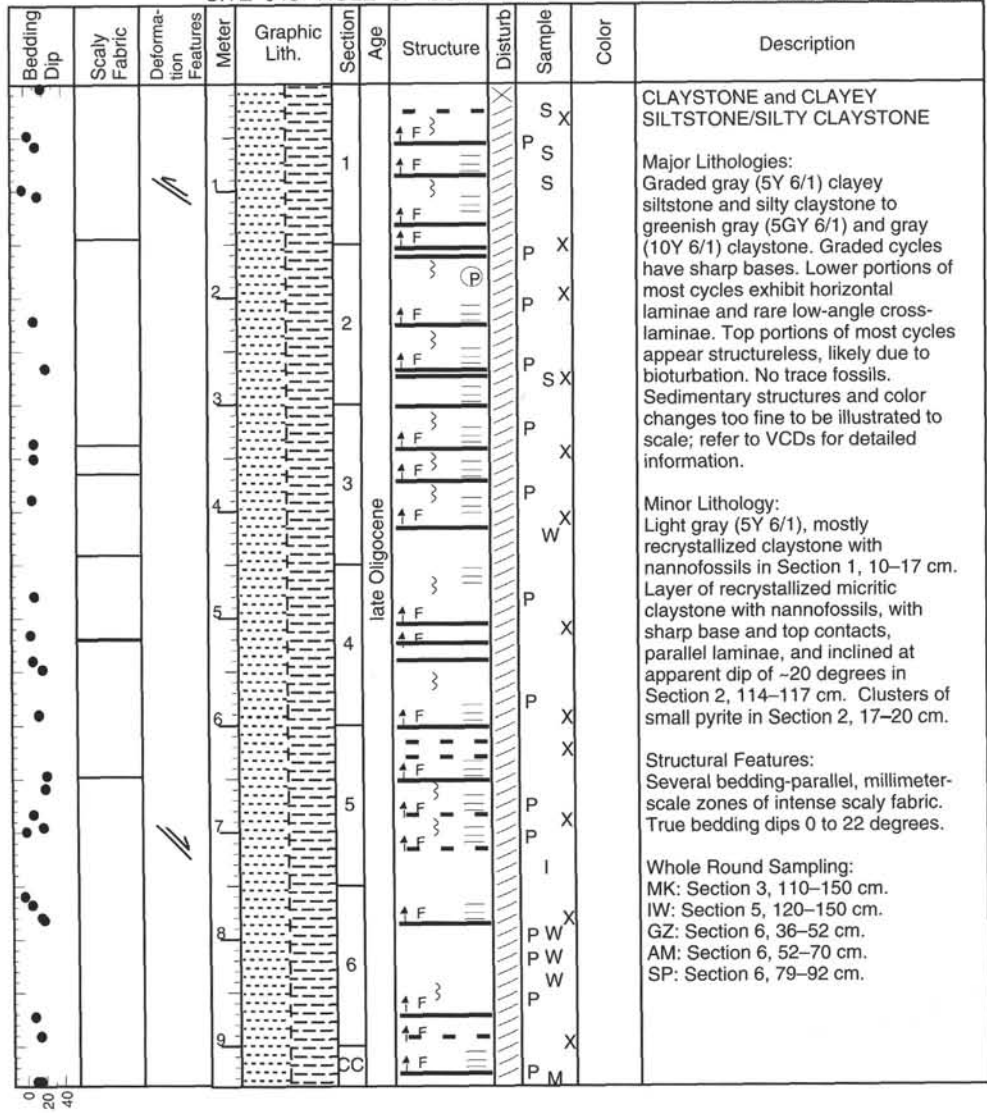
CORED 526.8 - 536.1 mbsf

Bedding Dip	Scaly Fabric	Deformation Features	Meter	Graphic Lith.	Section	Age	Structure	Disturb	Sample	Color	Description
0			0		1			X	P	X	<p><b>CLAYSTONE and SILTY CLAYSTONE/CLAYEY SILTSTONE</b></p> <p><b>Major Lithologies:</b> Thin, horizontally laminated, gray (5Y 5/1-5Y 6/1), dark olive gray (5Y 3/2), or black (N/4) clayey siltstone and silty claystone, grading to greenish gray (5GY 6/1) and gray (10Y 6/1) claystone. Graded cycles have sharp bases. Top portions of many cycles appear structureless, likely due to bioturbation. No trace fossils. Sedimentary structures and color changes too fine to be illustrated to scale; refer to VCDs for detailed information.</p> <p><b>Minor Lithology:</b> Section 3, 73-100 cm: Light gray (5Y 6/1-5Y 7/1) silty sand with horizontal and cross-laminae, grading upsection to greenish gray (5GY 5/1), slightly bioturbated claystone.</p> <p><b>Structural Features:</b> Shallow-dipping, millimeter- to decimeter-scale zones of intense scaly fabric in Section 1, 78 cm to Section 2, 128 cm. Isolated, millimeter-scale zones of intense scaly fabric along normal fault in Section 4 and as bedding-parallel features in Section 6. True bedding dips 0 to 24 degrees.</p> <p><b>Whole Round Sampling:</b> AF: Section 3, 60-73 cm. IW: Section 4, 115-150 cm. HT: Section 5, 26-42 cm. GZ: Section 7, 36-51 cm. JA: CC, 15-25 cm.</p>
20			1		2			X	P	X	
40			2		3			X	P	X	
			3		4	late Oligocene		X	P	X	
			4		5			X	P	X	
			5		6			X	P	X	
			6		7			X	P	X	
			7		8			X	P	X	
			8		9			X	P	X	
			9		CC			X	P	X	



SITE 948 HOLE C CORE 14X

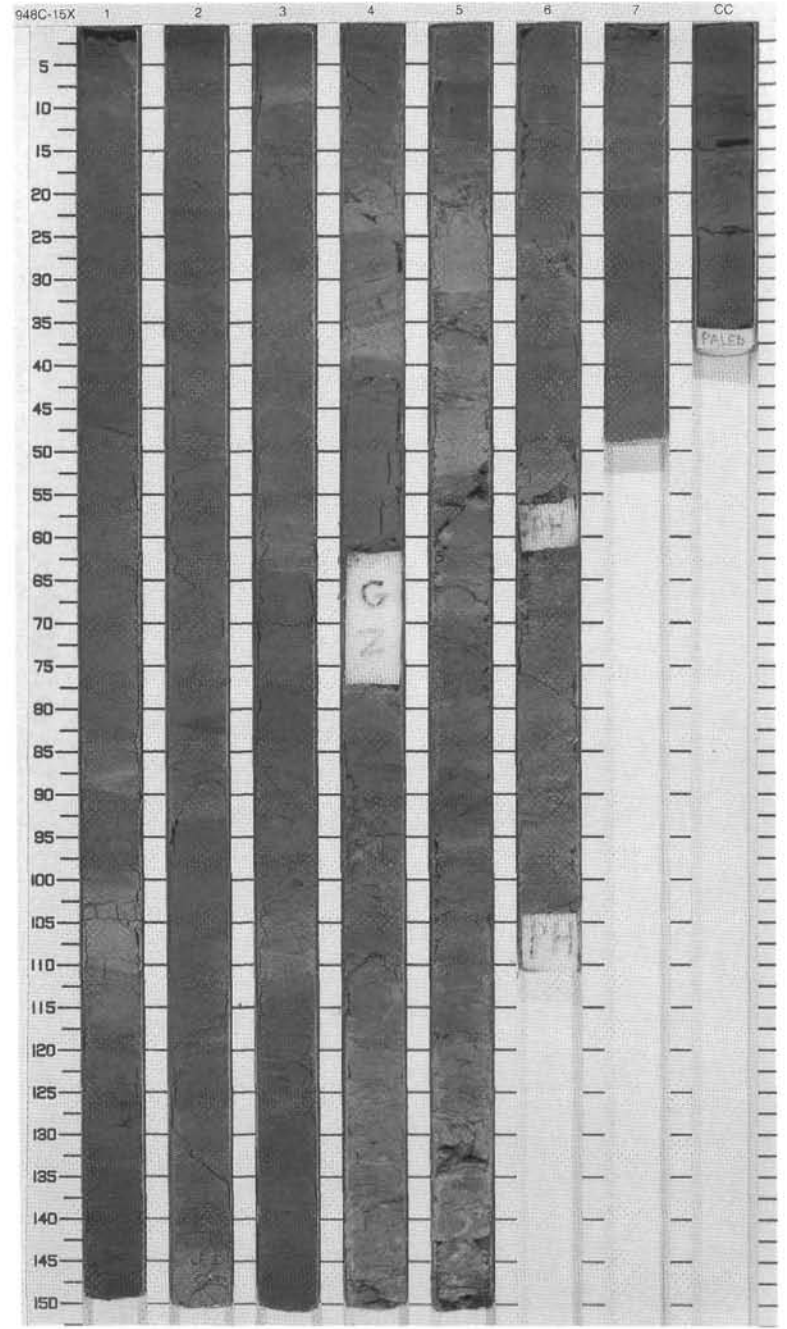
CORED 536.1 - 545.4 mbsf

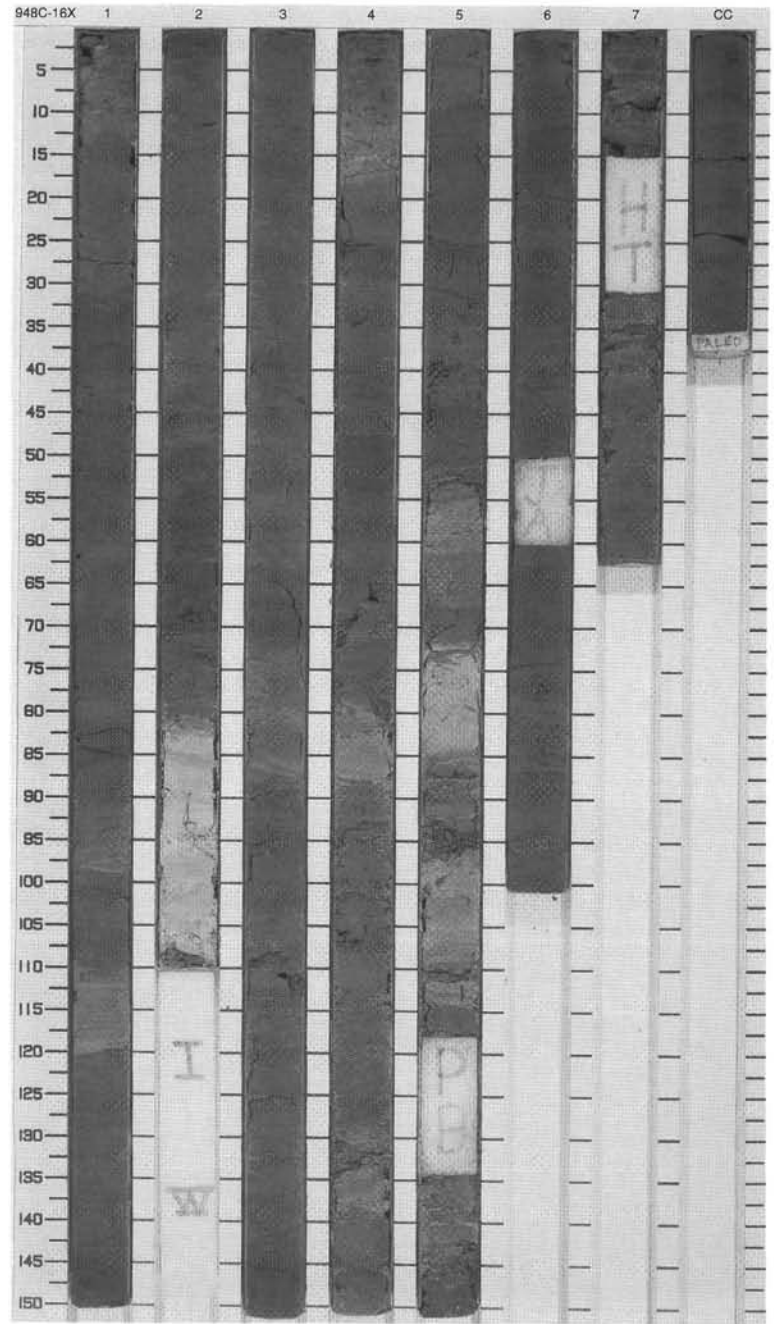
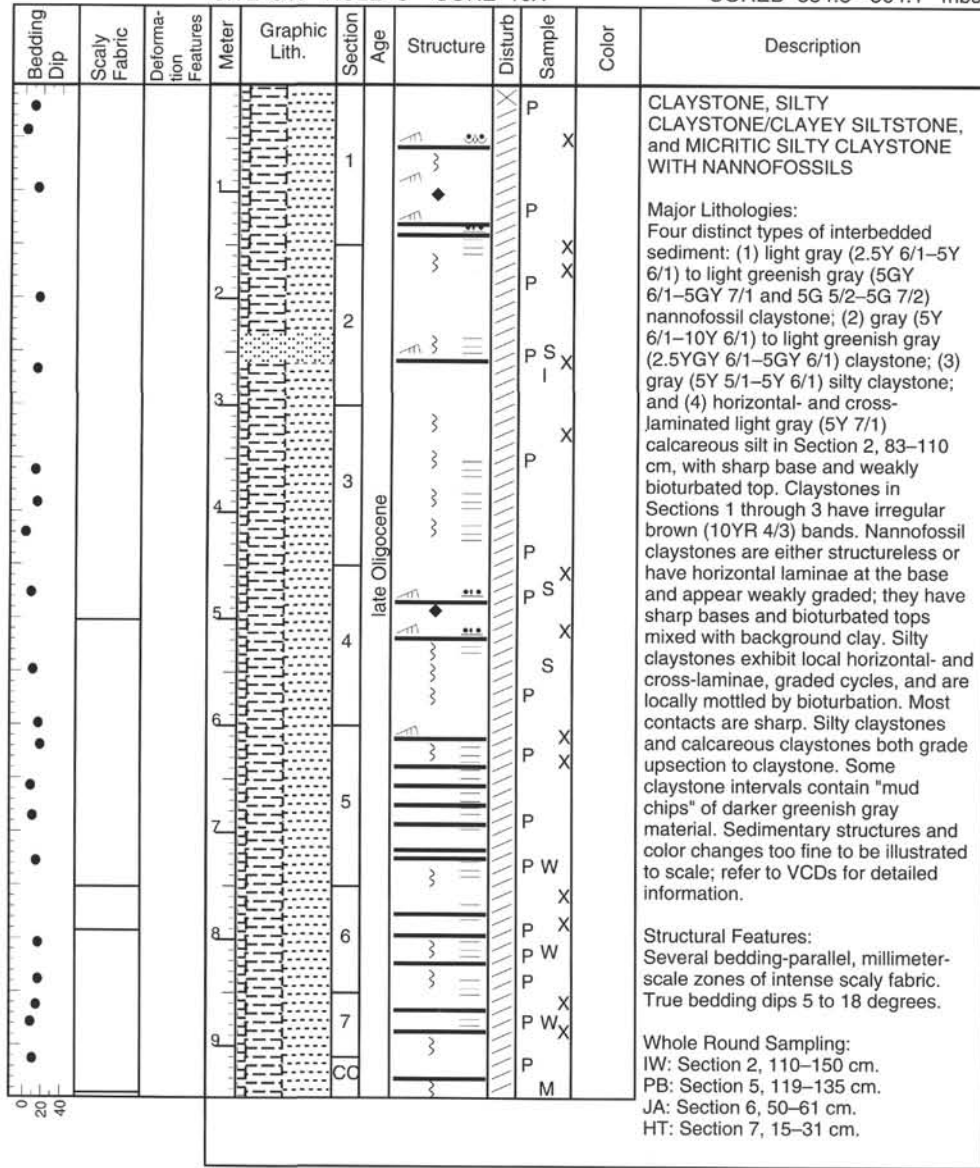


SITE 948 HOLE C CORE 15X

CORED 545.4 - 554.8 mbsf

Bedding Dip	Scaly Fabric	Deformation Features	Meter	Graphic Lith.	Section	Age	Structure	Disturb	Sample	Color	Description
0			0				↑ F		X		<p>CLAYSTONE, SILTY CLAYSTONE, and CLAYSTONE WITH NANNOFOSSILS</p> <p>Major Lithologies: Three distinct types of interbedded sediment: (1) light gray (5Y 6/1) silty claystone; (2) greenish gray (5GY 6/1) to gray (2.5Y 6/1) claystone; and (3) light gray (5Y 6/1) claystone with nannofossils. Silty claystone and claystone interbeds form graded cycles, with horizontal to gently inclined laminae and ripple cross-laminae at the base and mild bioturbation toward the top. Nannofossil-rich interbeds are generally laminated and grade upward into claystone. Bases of most cycles are sharp or disrupted. Sedimentary structures and color changes too fine to be illustrated to scale; refer to VCDs for detailed information.</p> <p>Structural Features: Several bedding-parallel, millimeter-scale zones of intense scaly fabric. True bedding dips 0 to 28 degrees.</p> <p>Whole Round Sampling: GZ: Section 4, 61–77 cm. PH: Section 6, 55–61 cm; Section 6, 103–109 cm. IW: Section 6, 110–150 cm.</p>
0			1		1		↑ F		P		
0			1		1		↑ F		P		
0			1		1		↑ F		P		
0			2		2		↑ F		S X		
0			2		2		↑ F		P S		
0			2		2		↑ F		P S		
0			3		3		↑ F		X		
0			3		3		↑ F		P S X		
0			3		3		↑ F		P S		
0			4		4		↑ F		X		
0			4		4		↑ F		P S		
0			4		4		↑ F		X		
0			5		5		↑ F		P		
0			5		5		↑ F		P W X		
0			6		6		↑ F		P		
0			6		6		↑ F		X		
0			6		6		↑ F		X		
0			7		7		↑ F		P		
0			7		7		↑ F		P X		
0			8		8		↑ F		P		
0			8		8		↑ F		P W		
0			8		8		↑ F		P W X		
0			9		9		↑ F		P I		
0			9		9		↑ F		P		
0			9		9		↑ F		X		
0			9		9		↑ F		P		
0			9		9		↑ F		M		





SITE 948 HOLE C CORE 17X

CORED 564.1 - 573.3 mbsf

Bedding Dip	Scaly Fabric	Deformation Features	Meter	Graphic Lith.	Section	Age	Structure	Disturb	Sample	Color	Description
0			0		1				P S X		<p>CLAYSTONE, SILTY CLAYSTONE/CLAYEY SILTSTONE, and MICRITIC SILTY CLAYSTONE WITH NANNOFOSSILS</p> <p>Major Lithologies:                      Three distinct types of interbedded sediment: (1) light gray (2.5Y 6/1-5Y 6/1) to light greenish gray (5GY 6/1-5GY 7/1) nannofossil claystone; (2) gray (5Y 6/1-10Y 6/1) to light greenish gray (2.5YGY 6/1-5GY 6/1) claystone; and (3) gray (2.5Y 6/1-5Y 6/1) silty claystone. Nannofossil claystones are either structureless or have horizontal laminae or gently inclined cross-laminae at the base and appear weakly graded. They have sharp bases and bioturbated tops mixed with background clay. Claystones and silty claystones exhibit local horizontal laminae, cross-laminae, graded cycles, and mottling by bioturbation. Most contacts are sharp. Some claystone intervals contain "mud chips" of darker greenish gray material. Sedimentary structures (except the approximate locations of sharp bedding contacts) and color changes on too fine a scale to be illustrated; refer to VCDs for detailed information.</p> <p>Structural Features:                      Minor normal and reverse faults in Section 4. Two bedding-parallel, millimeter-scale zones of intense scaly fabric in Sections 4 and 6. True bedding dips 3 to 17 degrees.</p> <p>Whole Round Sampling:                      IW: Section 2, 120-150 cm.                      MK: Section 5, 0-40 cm.                      AM: Section 6, 67-78 cm.</p>
0			1		2				P S X		
0			2		3				P S X		
0			3		4	late Oligocene			P S X		
0			4		5				P X		
0			5		6				P X		
0			6		7				P X		
0			7		8				P X		
0			8		9				P W		
0			9		CC				P X		
0			10						P X		
0			11						P X		
0			12						P X		
0			13						P X		
0			14						P X		
0			15						P X		
0			16						P X		
0			17						P X		
0			18						P X		
0			19						P X		
0			20						P X		
0			21						P X		
0			22						P X		
0			23						P X		
0			24						P X		
0			25						P X		
0			26						P X		
0			27						P X		
0			28						P X		
0			29						P X		
0			30						P X		
0			31						P X		
0			32						P X		
0			33						P X		
0			34						P X		
0			35						P X		
0			36						P X		
0			37						P X		
0			38						P X		
0			39						P X		
0			40						P X		
0			41						P X		
0			42						P X		
0			43						P X		
0			44						P X		
0			45						P X		
0			46						P X		
0			47						P X		
0			48						P X		
0			49						P X		
0			50						P X		
0			51						P X		
0			52						P X		
0			53						P X		
0			54						P X		
0			55						P X		
0			56						P X		
0			57						P X		
0			58						P X		
0			59						P X		
0			60						P X		
0			61						P X		
0			62						P X		
0			63						P X		
0			64						P X		
0			65						P X		
0			66						P X		
0			67						P X		
0			68						P X		
0			69						P X		
0			70						P X		
0			71						P X		
0			72						P X		
0			73						P X		
0			74						P X		
0			75						P X		
0			76						P X		
0			77						P X		
0			78						P X		
0			79						P X		
0			80						P X		
0			81						P X		
0			82						P X		
0			83						P X		
0			84						P X		
0			85						P X		
0			86						P X		
0			87						P X		
0			88						P X		
0			89						P X		
0			90						P X		
0			91						P X		
0			92						P X		
0			93						P X		
0			94						P X		
0			95						P X		
0			96						P X		
0			97						P X		
0			98						P X		
0			99						P X		
0			100						P X		
0			101						P X		
0			102						P X		
0			103						P X		
0			104						P X		
0			105						P X		
0			106						P X		
0			107						P X		
0			108						P X		
0			109						P X		
0			110						P X		
0			111						P X		
0			112						P X		
0			113						P X		
0			114						P X		
0			115						P X		
0			116						P X		
0			117						P X		
0			118						P X		
0			119						P X		
0			120						P X		
0			121						P X		
0			122						P X		
0			123						P X		
0			124						P X		
0			125						P X		
0			126						P X		
0			127						P X		
0			128						P X		
0			129						P X		
0			130						P X		
0			131						P X		
0			132						P X		
0			133						P X		
0			134						P X		
0			135						P X		
0			136						P X		
0			137						P X		
0			138						P X		
0			139						P X		
0			140						P X		
0			141						P X		
0			142						P X		
0			143						P X		
0			144						P X		
0			145						P X		
0			146						P X		
0			147						P X		
0			148						P X		
0			149						P X		
0			150						P X		

