

LEG

1
9
3

SITE

1
1
8
8

HOLE

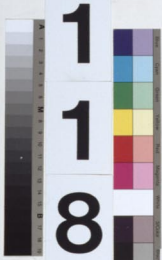
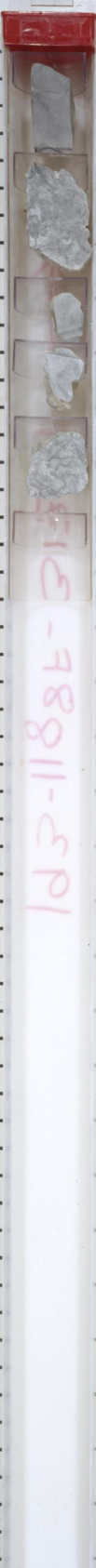
F

CORE

3
1
Z

1

5
10
15
20
25
30
35
40
45
50
55
60
65
70
75
80
85
90
95
100
105
110
115
120
125
130
135
140



1

LEG

1
9
3

SITE



1
1
8
8



HOLE

F

CORE

3
1
Z

5
10
15
20
25
30
35
40
45
50
55
60
65
70
75
80
85
90
95
100
105
110
115
120
125
130
135
140
145
150



1/88F 31Z
→

